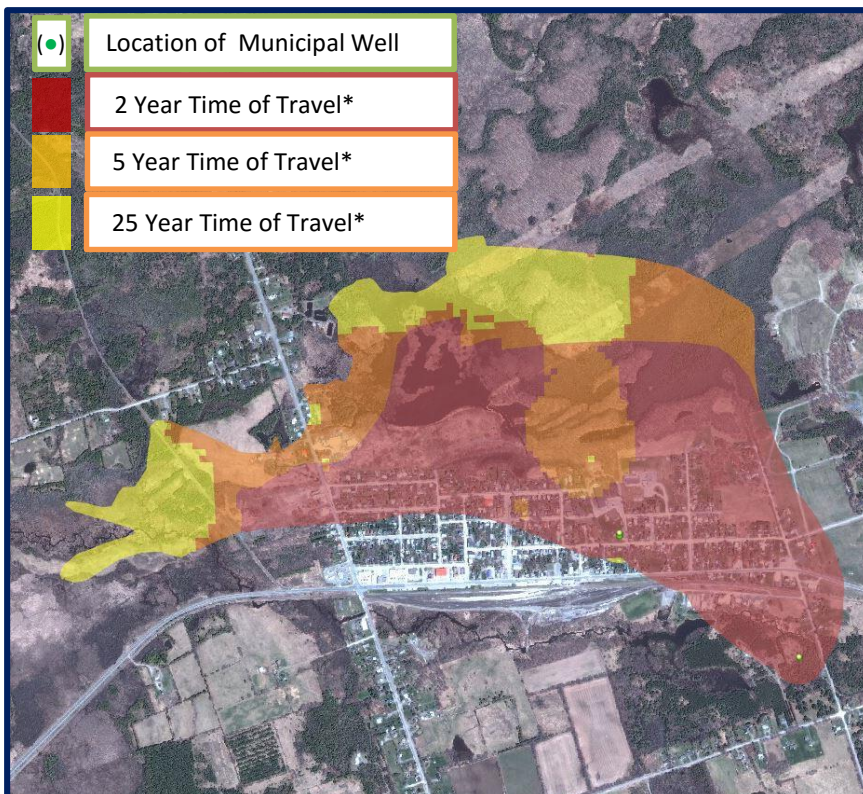


The Havelock-Belmont-Methuen (HBM) Drinking Water System is 1 of 53 municipal residential drinking water systems in the Trent Conservation Coalition Source Protection Region, and 1 of 4 such systems in the Crowe Valley Source Protection Area.

On January 1, 2015, policies set out in the Trent Source Protection Plan came into effect to better protect the source water for the municipal drinking water system by reducing or eliminating *significant* threat(s) associated with certain land based activities. The Plan was developed under the *Clean Water Act* in response to the Walkerton Inquiry.

A drinking water threat is a land-based *activity* that can impact the quality of a municipal drinking water source (due to a spill or leak). *Significant* drinking water threat activities can only occur in Vulnerable Areas such as the Wellhead Protection Area for this municipal drinking water system (shown on right and on reverse). Plan policies are intended to reduce or minimize the significant threat posed by such activities.



Water Source	Groundwater
Owned By	Havelock-Belmont-Methuen Township
Operating Authority	Ontario Clean Water Agency
Serviced Population	1,400 (approximately)
Annual Pump Rate	169 cubic meters (average)
Well Depth	Well 1: 15.2 meters Well 2: 13.7 meters Well 3: 15 meters
Aquifer Type	Unconfined bedrock aquifers : groundwater under the direct influence of surface water
Treatment System	Disinfection with sodium hypochlorite; chlorine and UV irradiation; dual media filtration on well 3

*Length of time that contaminants may take to reach the municipal well if spilled or leaked in this area.

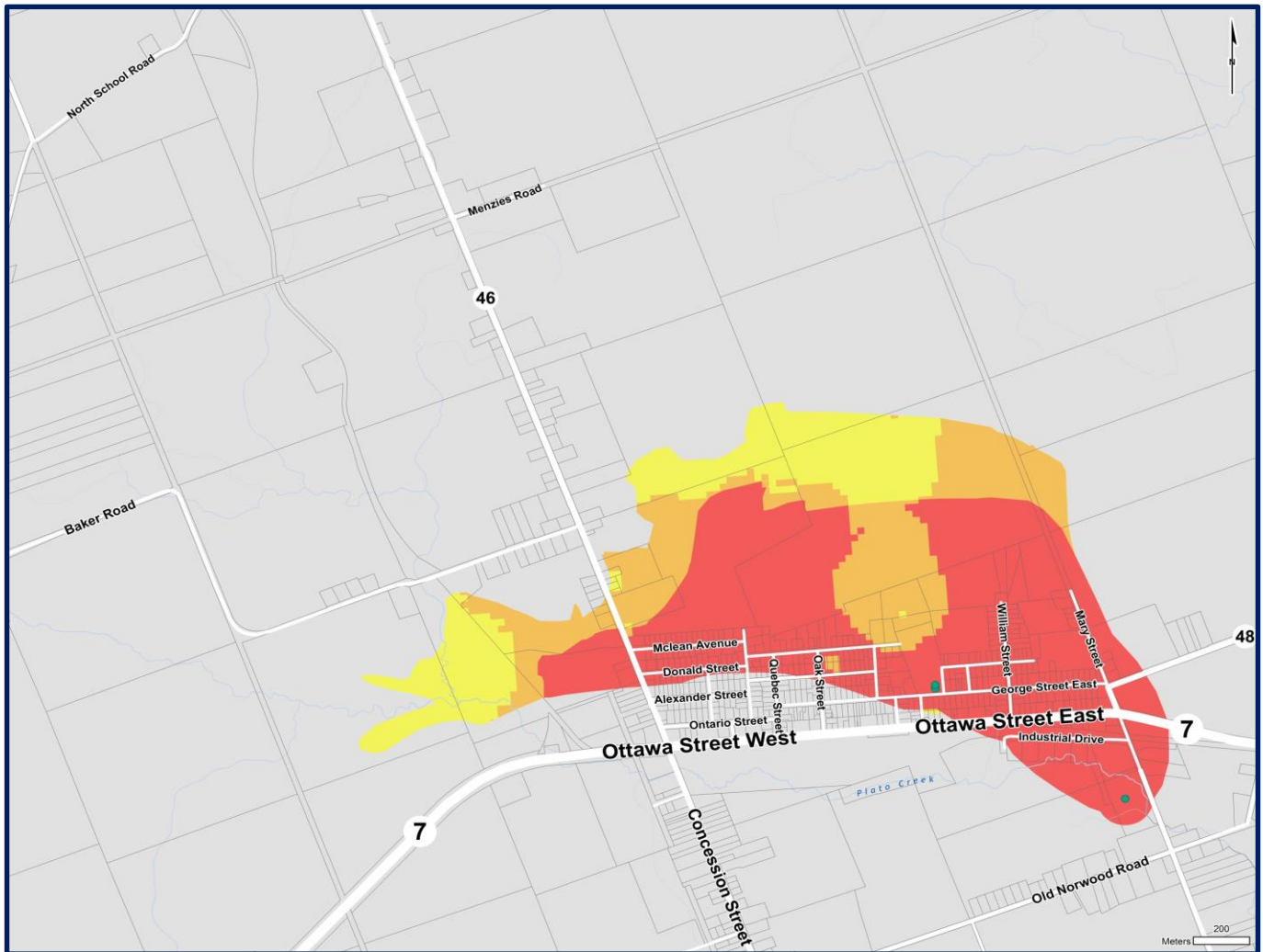
Types of Drinking Water Threats

- ✓ Waste
- ✓ [Sewage/Septics](#)
- ✓ Livestock
- ✓ Snow storage
- ✓ Other chemicals
- ✓ Pesticides
- ✓ Fertilizer
- ✓ Nutrients
- ✓ Fuel

To learn more about these threats visit www.trentsourceprotection.on.ca

Drinking water threats can only occur in the **Wellhead Protection Area shown below** and as illustrated on the Policy Applicability Map included in the Trent Source Protection Plan. The location, scale and nature of an activity determines if it poses a low, moderate or *significant* threat to the municipal drinking water source. Policies in the Trent Source Protection Plan only apply to *significant* drinking water threats.

- Contaminants may reach the municipal wellhead (●) in 2 years or less if spilled or leaked in this area.
- Contaminants may reach the municipal wellhead (●) in 5 years or less if spilled or leaked in this area.
- Contaminants may reach the municipal wellhead (●) in 25 years or less if spilled or leaked in this area.



Vicki Woolfrey
Source Water Protection Specialist
(613) 472-3137
vicki.woolfrey@crowevalley.com

Terri Cox
Risk Management Official and Inspector
(705) 745-5791 x 219
tcox@otonabee.com

The Trent Source Protection Plan is available at www.trentsourceprotection.on.ca

Crowe Valley Conservation Authority
70 Hughes Lane, ON K0K 2M0 • www.crowevalley.com • t: 613-472-3137