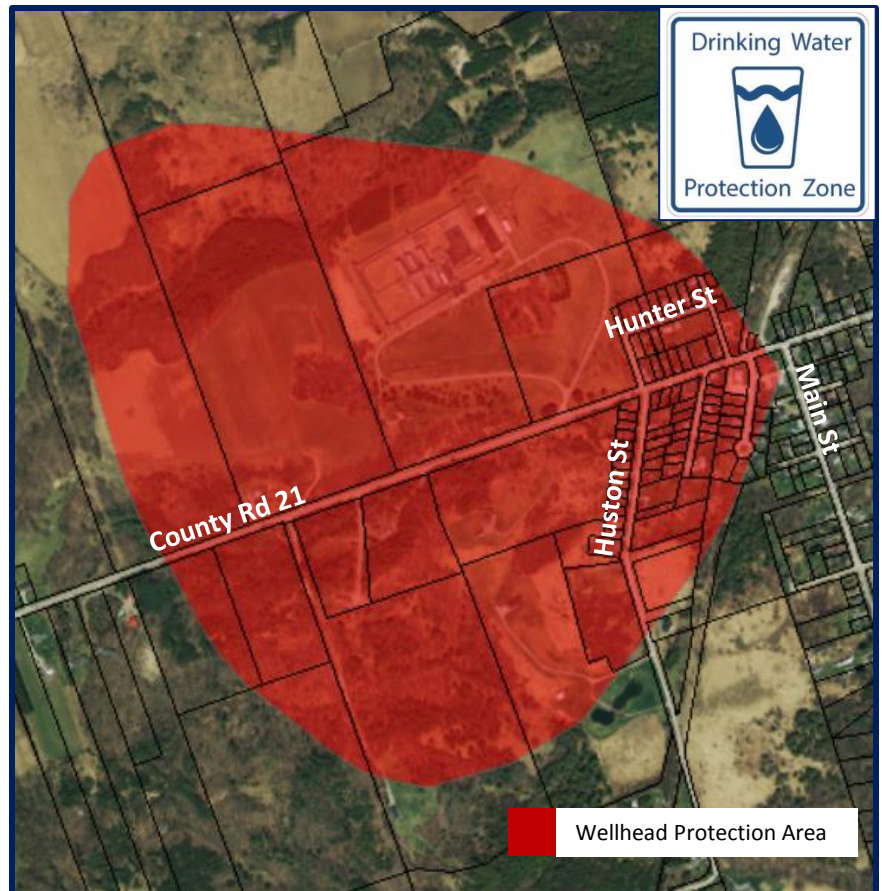


The Millbrook Municipal Well System is 1 of 53 municipal residential drinking water systems in the Trent Conservation Coalition Source Protection Region, and 1 of 12 systems in the Otonabee-Peterborough Source Protection Area.

The Trent Source Protection Plan came into effect January 1, 2015 and was developed under the *Clean Water Act*. It was approved by the Ministry of the Environment and Climate Change (MOECC) and contains policies that direct local efforts to better protect the sources of water that supply municipal residential drinking water systems.

The MOECC lists 21 drinking water threats (land-based activities that can impact source water quality or quantity). The location, scale and nature of an activity determine if the threat is low, moderate, or *significant*. Trent Source Protection Plan policies apply to *significant* drinking water threat activities in the Wellhead Protection Area shown at right and on map on the reverse.



Water Source	Groundwater
Owned By	Township of Cavan Monaghan
Operating Authority	Ontario Clean Water Agency
Served Population	1,200 (approximately)
Annual Pump Rate	591 m ³ /day (average)
Well Depth	Well 1: 30 m (main production well) Well 2: 30 m (standby well) Well 3: 31 m
Aquifer Type	Confined overburden
Treatment System	Disinfection with sodium hypochlorite



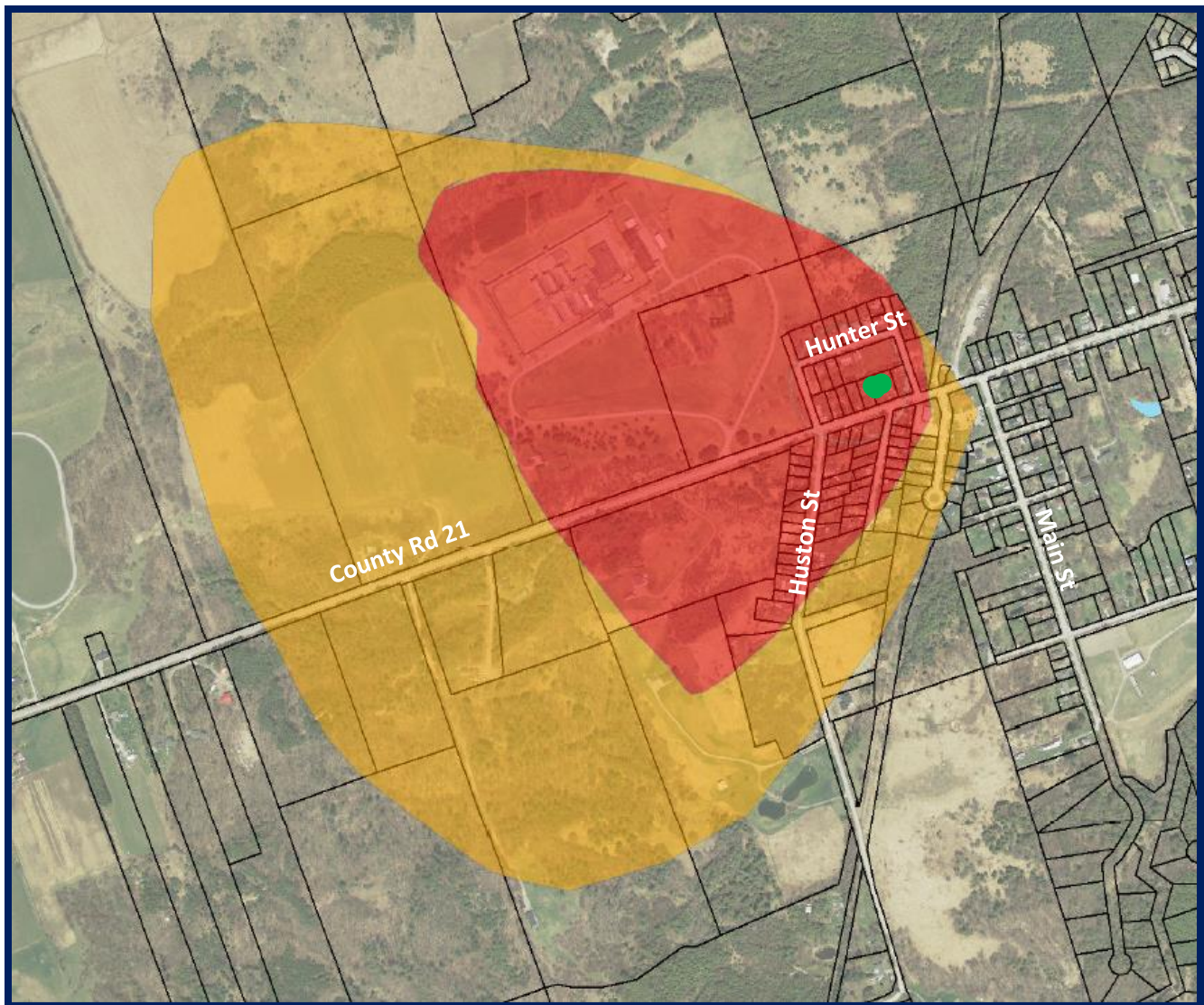
Types of Drinking Water Threats

- ✓ Waste
- ✓ Sewage
- ✓ Livestock
- ✓ Snow storage
- ✓ Other chemicals
- ✓ Pesticides
- ✓ Fertilizer
- ✓ Nutrients
- ✓ Fuel

Data Source: Approved Trent Assessment Report dated October 1, 2014

Trent Source Protection Plan policies apply to *significant* drinking water threat activities in the Wellhead Protection Area shown below and as illustrated on the Policy Applicability Map included in the appendix of the Trent Source Protection Plan.

- Contaminants may reach the municipal wellhead (●) in 2 years or less if spilled or leaked in this area.
- Contaminants may reach the municipal wellhead (●) in 5 years or less if spilled or leaked in this area.



Meredith Carter
Manager, Watershed Management Program
705-745-5791 x 223
mcarter@otonabeeconservation.com

Terri Cox
Risk Management Official and Inspector
705-745-5791 x 219
tcox@otonabeeconservation.com

The Trent Source Protection Plan is available at www.trentsourceprotection.on.ca

With support
provided by

