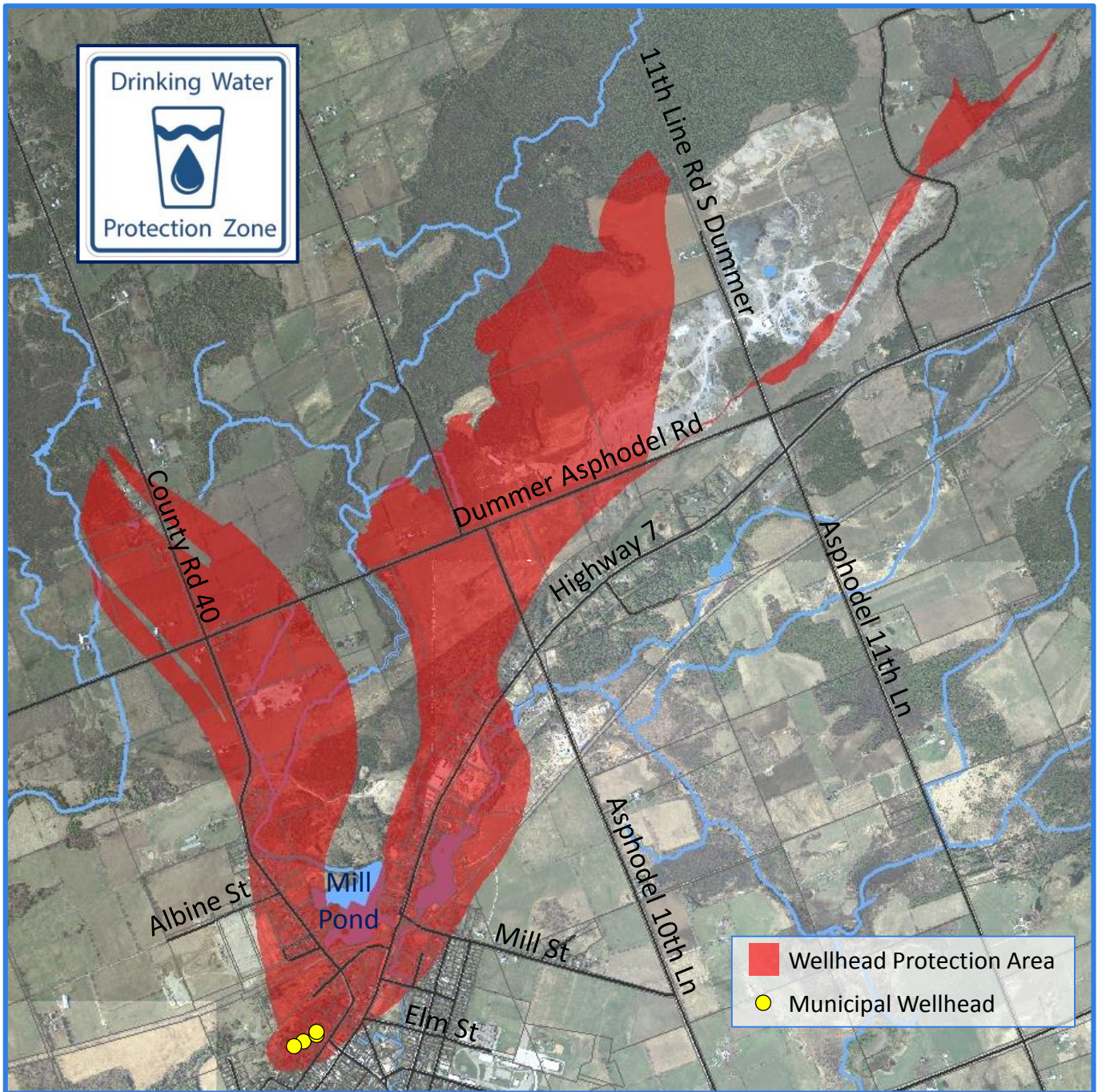


The *Clean Water Act* was developed to protect municipal, residential drinking water sources across the province from contamination and/or overuse by ensuring policies are in place to manage activities that may pose a drinking water threat. Locally, these policies are included in the Trent Source Protection Plan they apply within the Norwood Wellhead Protection Area, shaded red on the map below.



The **Norwood Municipal Well System** is one of 53 municipal, residential drinking water systems in the Trent Conservation Coalition Source Protection Region that is protected under the *Clean Water Act* and is one of 12 such systems in the Otonabee-Peterborough Source Protection Area.

Water Source	Groundwater
Owned & Operated By	Township of Asphodel-Norwood
Serviced Population	1,400 (approximately)
Annual Pump Rate	914 m ³ /day (average)
Well Depths	Well 1: 25.0 m (main production) Well 2: 21.3 m (stand-by) Well 3: 30.5 m (main production) Well 4: 30.5 m
Aquifer Type	Unconfined bedrock
Treatment System	Disinfection with sodium hypochlorite; other treatment with phosphate-based corrosion control

Data source: Trent Assessment Report

Activities that can pose a Threat to the municipal drinking water source



- ✓ Waste disposal and sewage systems
- ✓ Livestock grazing, pasturing, confinement
- ✓ Road salt use and snow storage
- ✓ Spreading or storing of agricultural materials (i.e. manure)
- ✓ Pesticide and fertilizer storage and use
- ✓ Liquid fuel storage (ie home heating oil)
- ✓ Chemicals handling and storage

Contact us to find out how you can protect drinking water



Terri Cox
Risk Management Official and Inspector
t: 705-745-5791 x 219
f: 705-745-7488
tcox@otonabeeconservation.com

www.otonabeeconservation.com

With support provided by **Ontario** 

Otonabee Region Conservation Authority
250 Milroy Drive, Peterborough ON K9H 7M9