

THIS MAP has been prepared for the purpose of meeting the provincial requirements under the Clean Water Act, 2006. If it is proposed to use it for another purpose, it would be advisable to consult with the responsible Conservation Authority.

PRODUCED BY Kawartha Region Conservation Authority on behalf of the Trent Conservation Coalition Source Protection Committee, March 2010, with data supplied under licence by members of the Ontario Geospatial Data Exchange.

OTHER DATA SOURCES:

Ontario  
Made possible through the support of the Government of Ontario

- Legend**
- Settlements
  - Road
  - Highway
  - Multi-lane Highway
  - Railway
  - Watercourse
  - Waterbody
  - Lower Tier Municipality
  - Upper and Single Tier Municipality
  - Source Protection Area Boundary

N

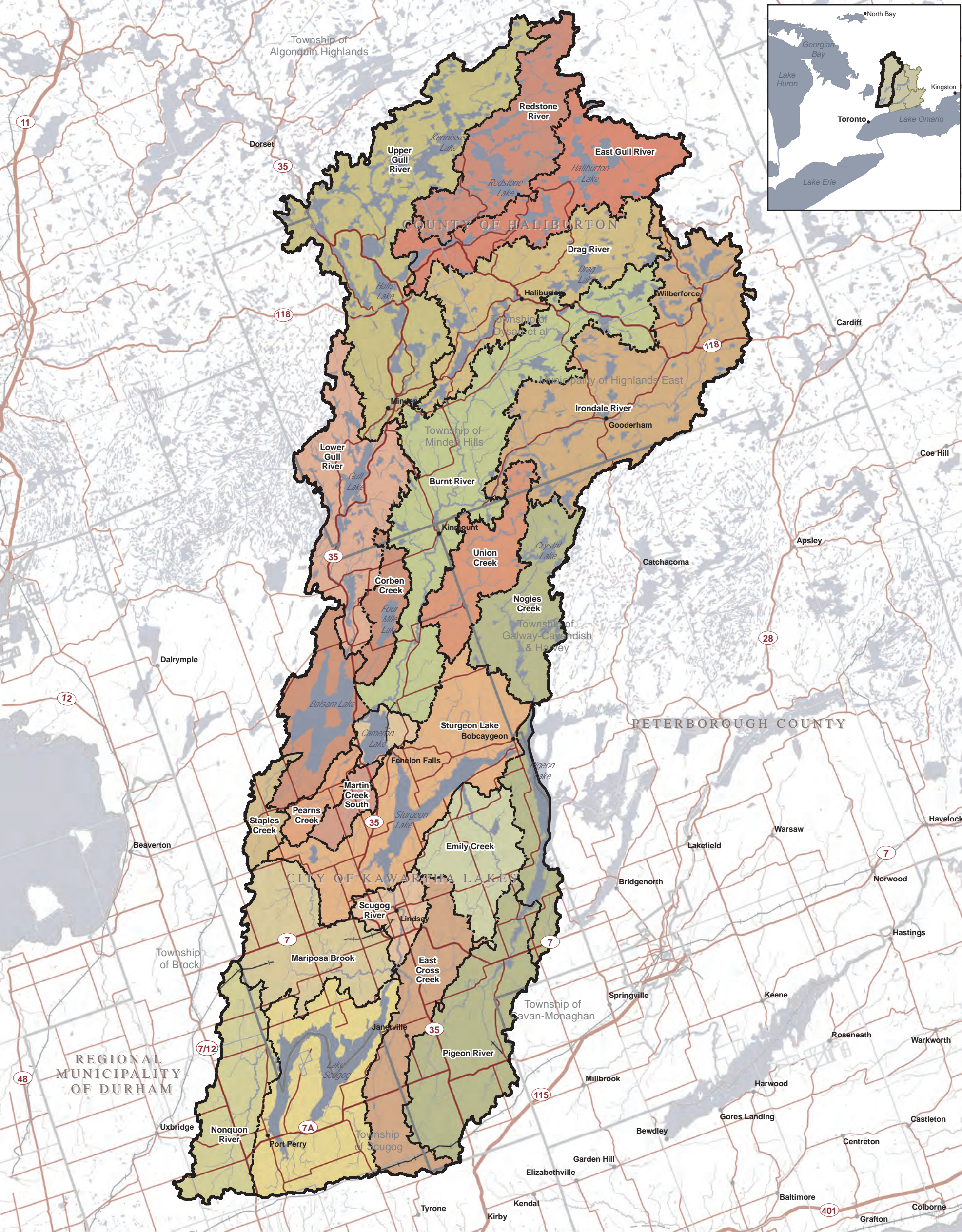
0 5 10 20 30 40

Kilometres

Trent Conservation Coalition  
Source Protection Region

[www.trentsourceprotection.on.ca](http://www.trentsourceprotection.on.ca)





THIS MAP has been prepared for the purpose of meeting the provincial requirements under the Clean Water Act, 2006. If it is proposed to use it for another purpose, it would be advisable to consult with the responsible Conservation Authority.

PRODUCED BY Kawartha Region Conservation Authority on behalf of the Trent Conservation Coalition Source Protection Committee, March 2010, with data supplied under licence by members of the Ontario Geospatial Data Exchange.

OTHER DATA SOURCES:

Ontario  
Made possible through the support of the Government of Ontario

Legend

• Settlements

— Road

— Highway

— Multi-lane Highway

— Railway

— Watercourse

— Waterbody

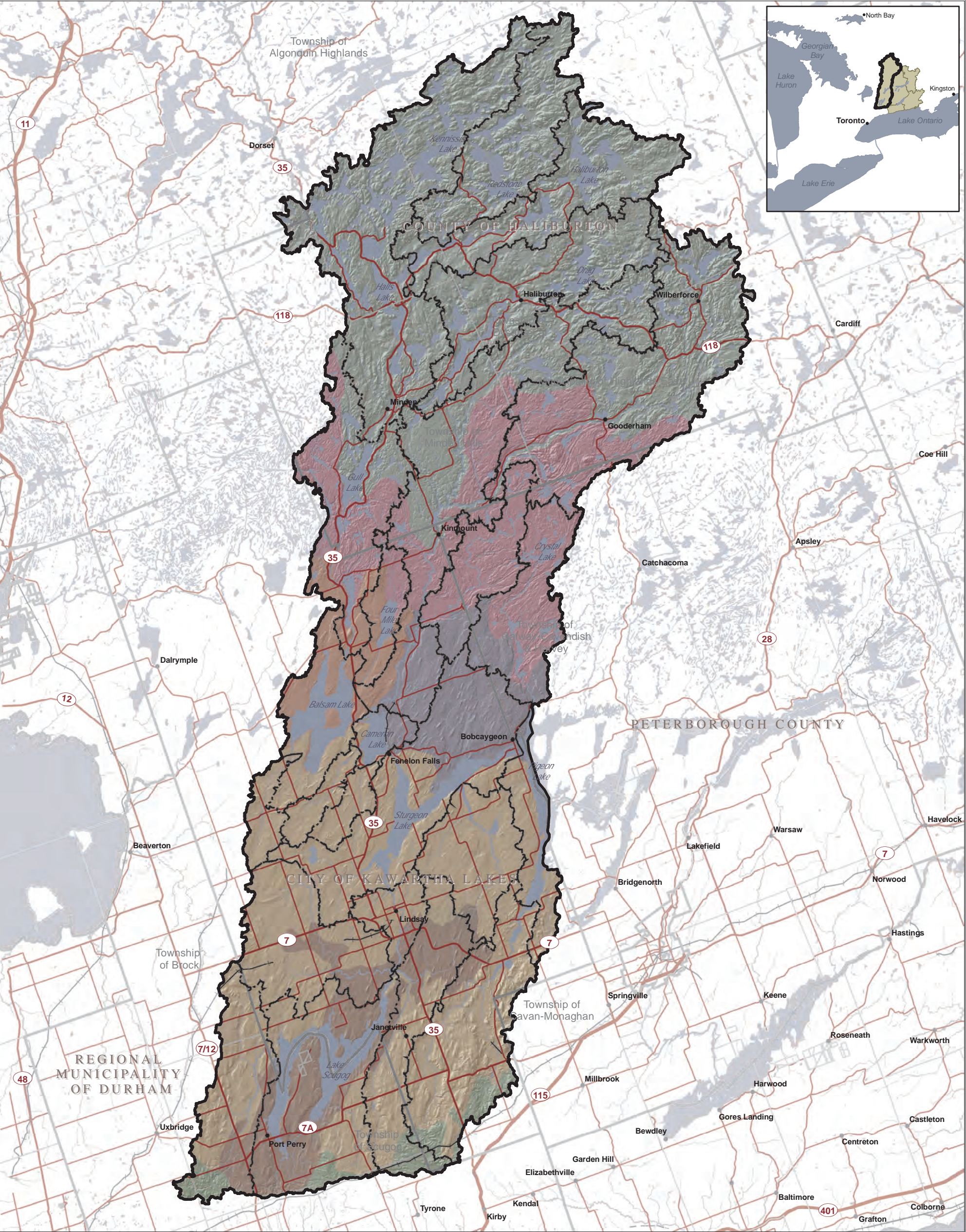
— Lower Tier Municipality

— Upper and Single Tier Municipality

— Subwatershed Boundary

Source Protection Area Boundary






THIS MAP has been prepared for the purpose of meeting the provincial requirements under the Clean Water Act, 2006. If it is proposed to use it for another purpose, it would be advisable to consult with the responsible Conservation Authority.

PRODUCED BY Kawartha Region Conservation Authority on behalf of the Trent Conservation Coalition Source Protection Committee, March 2010, with data supplied under licence by members of the Ontario Geospatial Data Exchange.

OTHER DATA SOURCES:



Made possible through the support of the Government of Ontario

**Legend**

- Settlements
- Road
- Highway
- Multi-lane Highway
- Railway
- Watercourse
- Waterbody
- Lower Tier Municipality
- Upper and Single Tier Municipality
- Subwatersheds
- Source Protection Area Boundary

**Physiographic Regions**

- ALGONQUIN HIGHLANDS
- CARDEN PLAIN
- DUMMER MORAINES
- GEORGIAN BAY FRINGE
- OAK RIDGES MORaine
- PETERBOROUGH DRUMLIN FIELD
- SCHOMBERG CLAY PLAINS

0 5 10 20 30 40

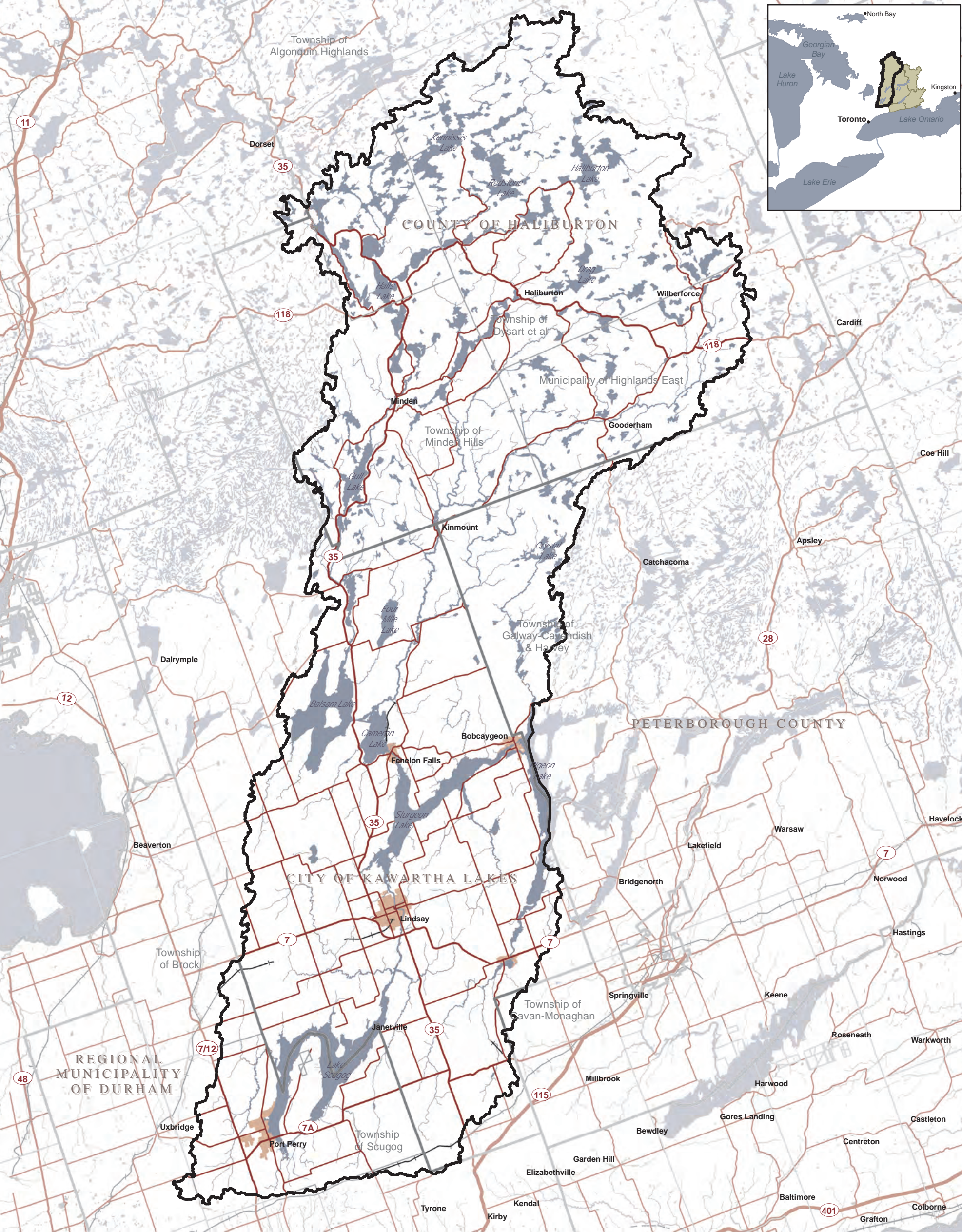
Kilometres

**Trent Conservation Coalition  
Source Protection Region**

[www.trentsourceprotection.on.ca](http://www.trentsourceprotection.on.ca)

Proposed Trent Assessment Report Map 2-3 (KH)





THIS MAP has been prepared for the purpose of meeting the provincial requirements under the Clean Water Act, 2006. If it is proposed to use it for another purpose, it would be advisable to consult with the responsible Conservation Authority.

PRODUCED BY Kawartha Region Conservation Authority on behalf of the Trent Conservation Coalition Source Protection Committee, March 2010, with data supplied under licence by members of the Ontario Geospatial Data Exchange.

OTHER DATA SOURCES:

Ontario  
Made possible through the support of the Government of Ontario

- Legend
- Road

Highway

Multi-lane Highway

Railway

Watercourse

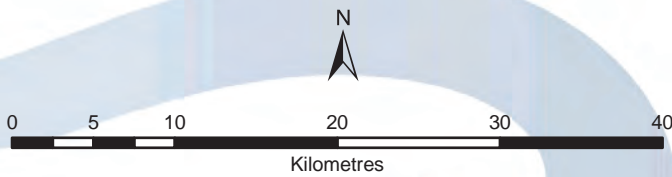
Waterbody

Lower Tier Municipality

Upper and Single Tier Municipality

Source Protection Area Boundary

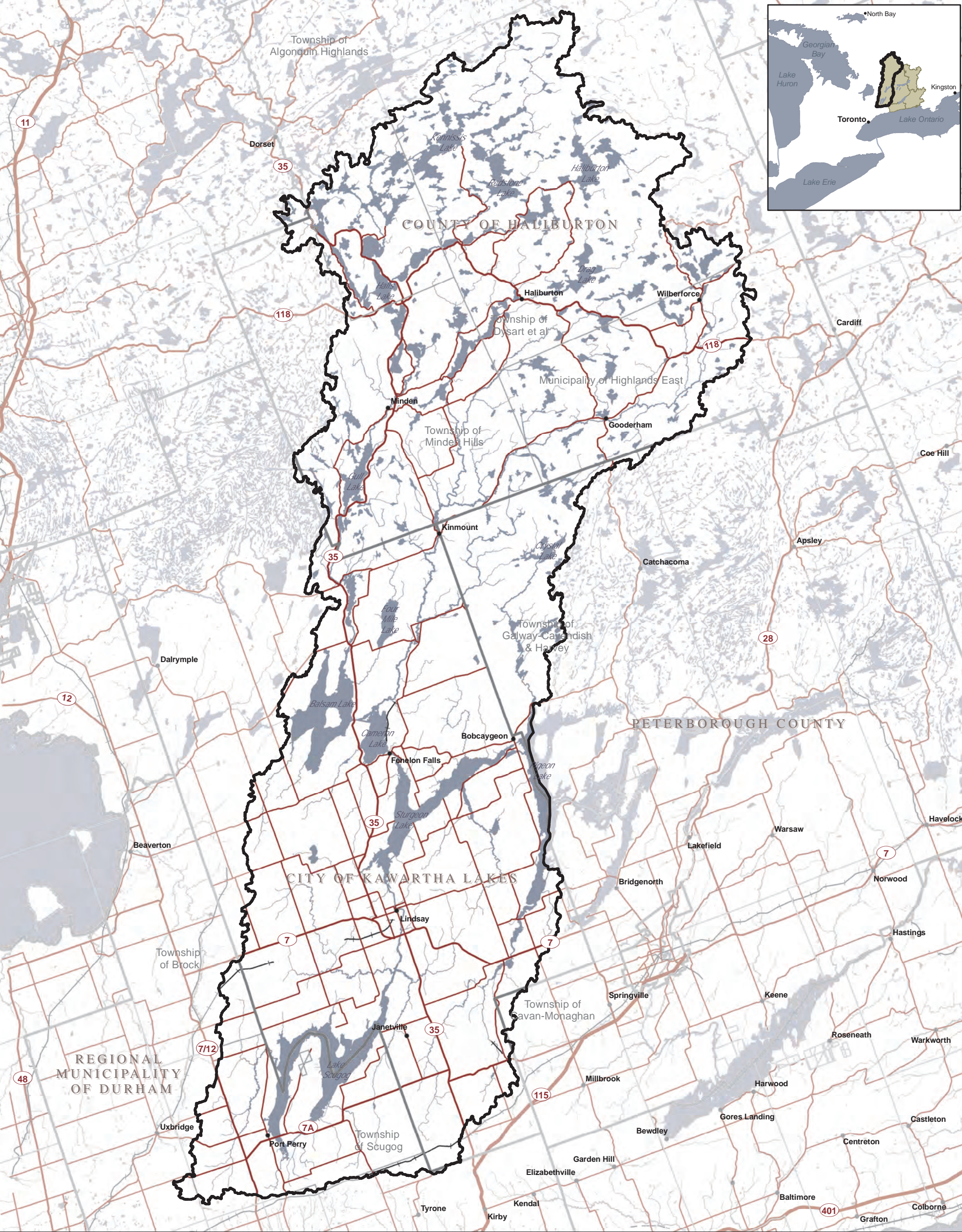
Areas of Settlement



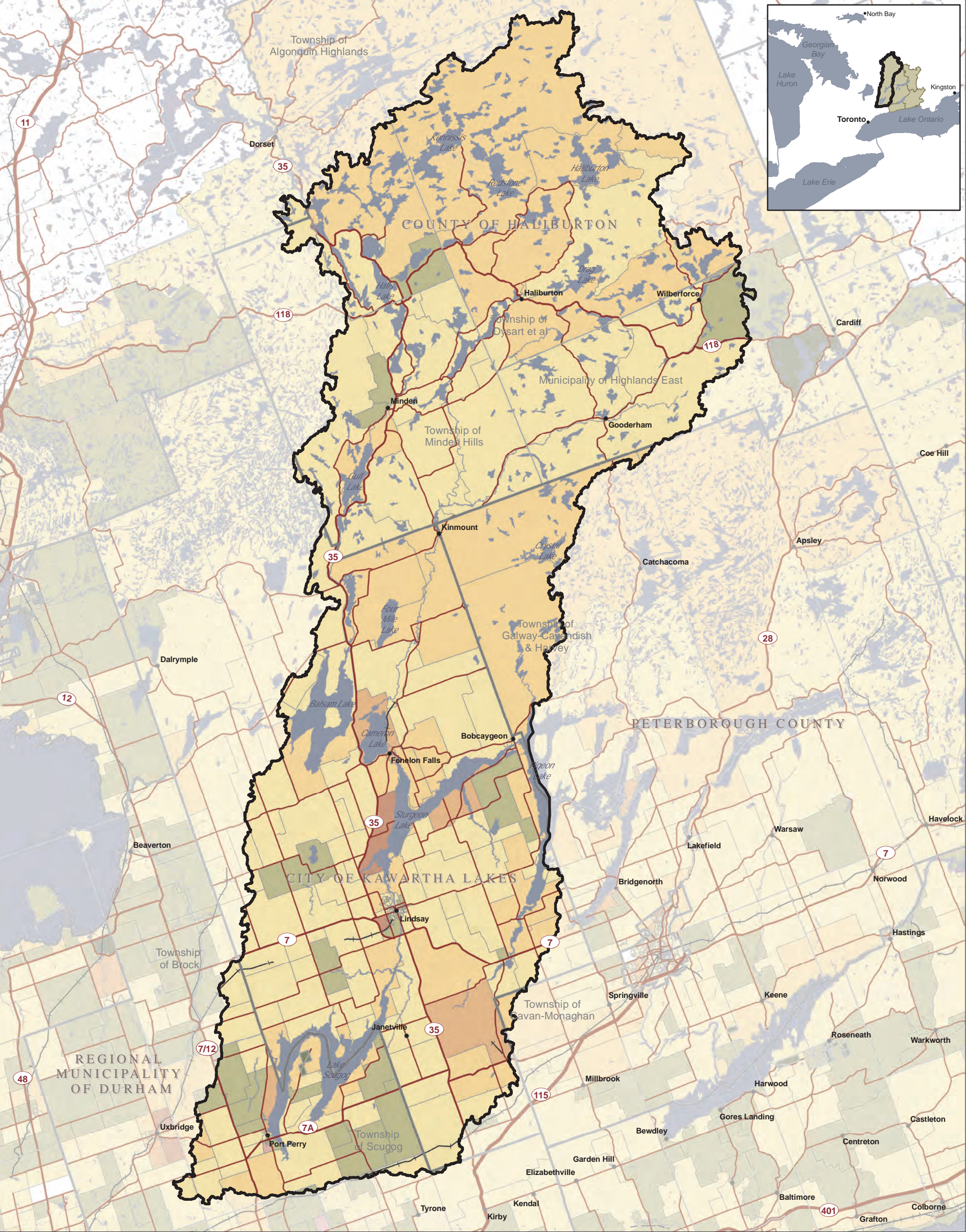
Trent Conservation Coalition  
Source Protection Region

www.trentsourceprotection.on.ca









THIS MAP has been prepared for the purpose of meeting the provincial requirements under the Clean Water Act, 2006. If it is proposed to use it for another purpose, it would be advisable to consult with the responsible Conservation Authority.

PRODUCED BY Kawartha Region Conservation Authority on behalf of the Trent Conservation Coalition Source Protection Committee, March 2010, with data supplied under licence by members of the Ontario Geospatial Data Exchange.

OTHER DATA SOURCES:  
Population: Geography Division, Statistics Canada, GeoSuite, 92-150-XCB, 2006 Census

Ontario  
Made possible through the support of the Government of Ontario

● Settlements

— Road

— Highway

— Multi-lane Highway

— Railway

□ Lower Tier Municipality

□ Upper and Single Tier Municipality

■ Waterbody

□ Source Protection Area Boundary

Population

<250

251-500

501-750

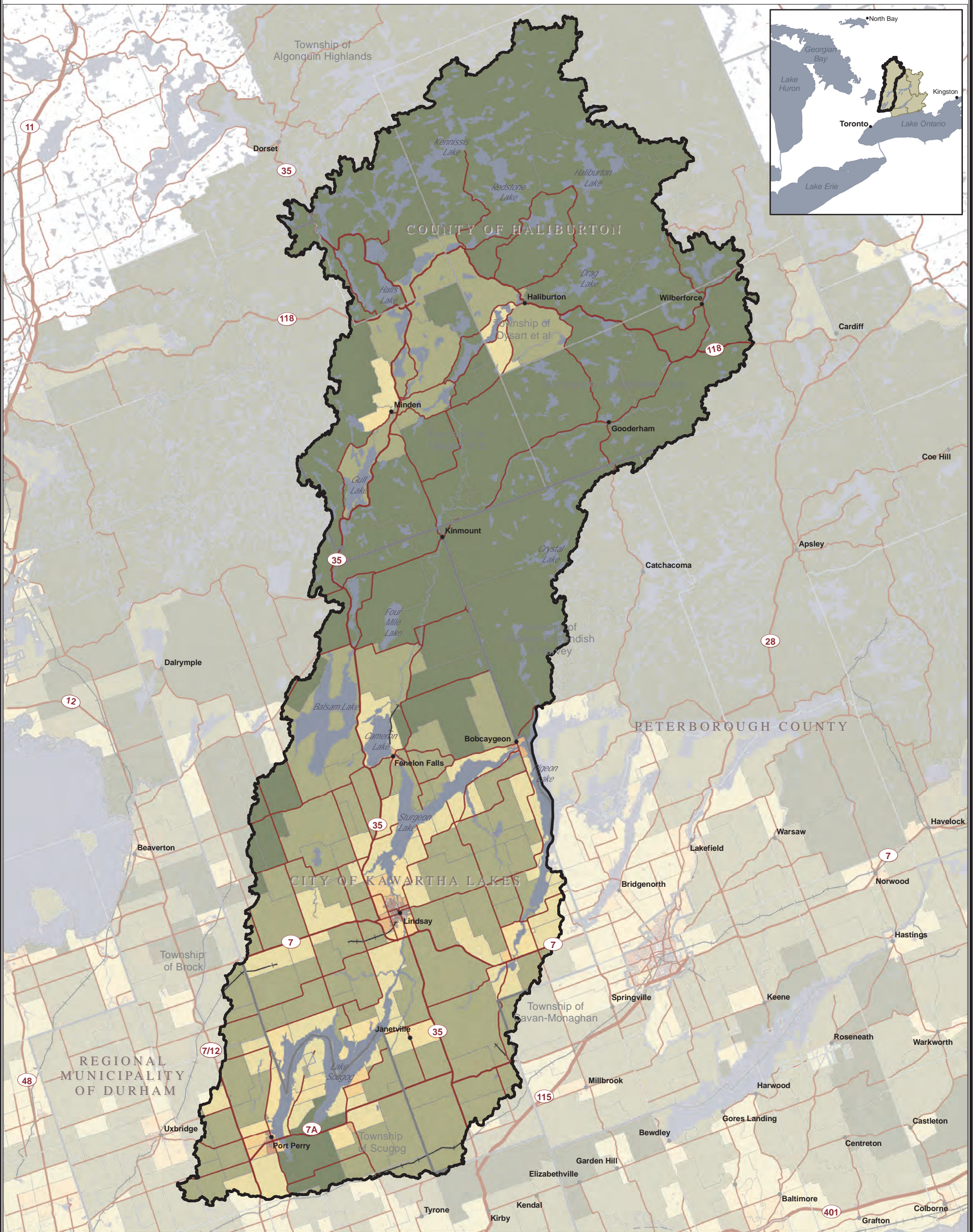
751-1000

1001-1250

1251-1500

1501-2000





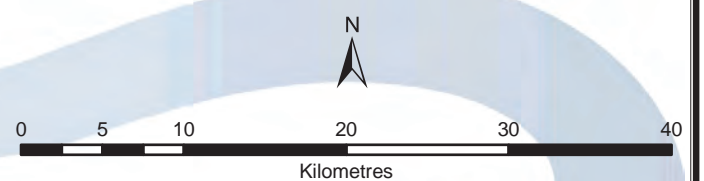
THIS MAP has been prepared for the purpose of meeting the provincial requirements under the Clean Water Act, 2006. If it is proposed to use it for another purpose, it would be advisable to consult with the responsible Conservation Authority.

PRODUCED BY Kawartha Region Conservation Authority on behalf of the Trent Conservation Coalition Source Protection Committee, March 2010, with data supplied under licence by members of the Ontario Geospatial Data Exchange.

OTHER DATA SOURCES:  
Population Density: Geography Division, Statistics Canada, GeoSuite, 92-150-XCB, 2006 Census

#### Legend

- Settlements
  - Road
  - Highway
  - Multi-lane Highway
  - Railway
  - Lower Tier Municipality
  - Upper and Single Tier Municipality
  - Waterbody
  - Source Protection Area Boundary
- Population Density (people/km2)
- <10
  - 11-25
  - 26-50
  - 51-100
  - 101-500
  - 501-1000
  - 1001-2000
  - 2001-3000
  - 3001-4000

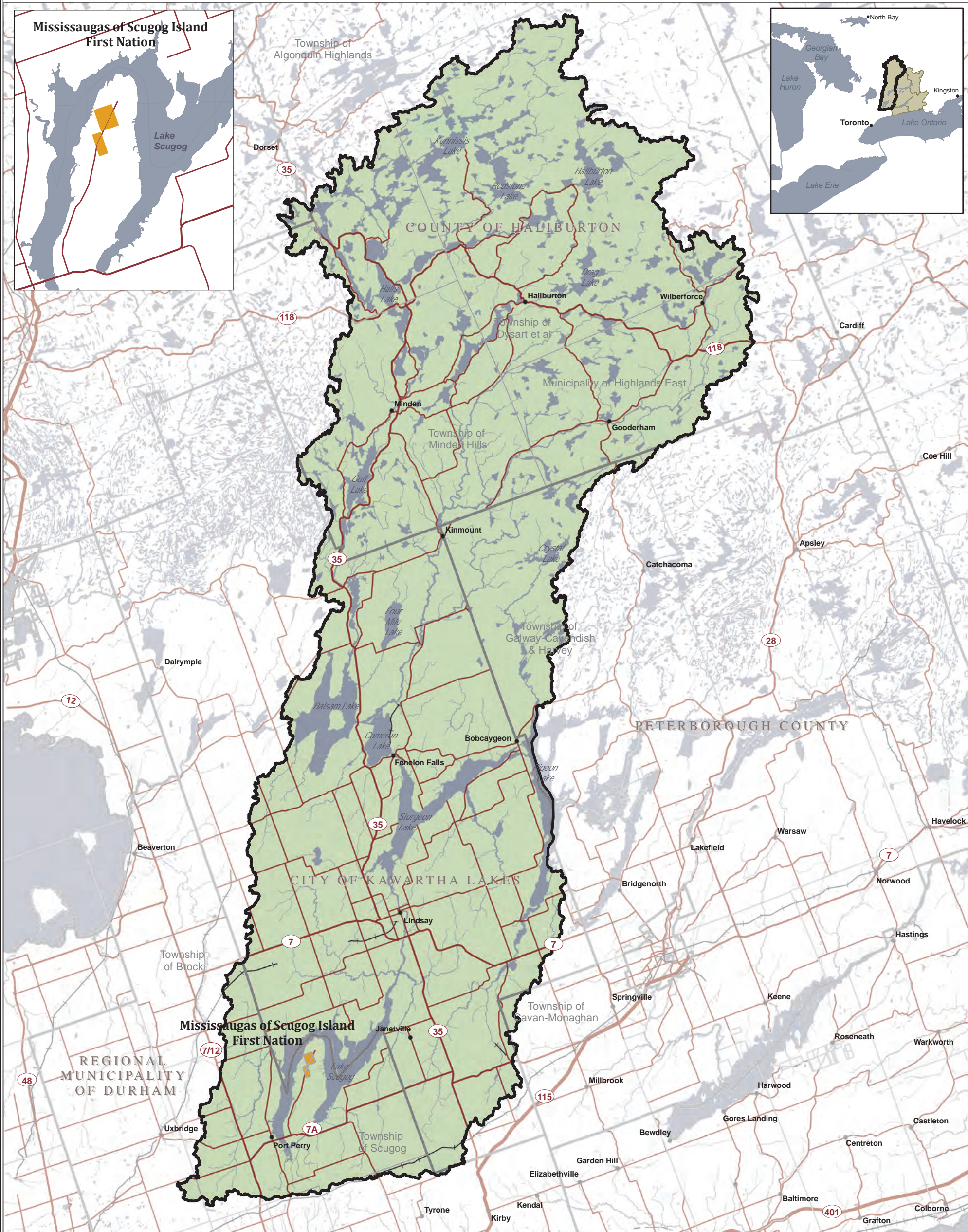


Trent Conservation Coalition  
Source Protection Region

[www.trentsourceprotection.on.ca](http://www.trentsourceprotection.on.ca)



# Kawartha-Haliburton Source Protection Area First Nation Reserves



THIS MAP has been prepared for the purpose of meeting the provincial requirements under the Clean Water Act, 2006. If it is proposed to use it for another purpose, it would be advisable to consult with the responsible Conservation Authority.

PRODUCED BY Kawartha Region Conservation Authority on behalf of the Trent Conservation Coalition Source Protection Committee, March 2010, with data supplied under licence by members of the Ontario Geospatial Data Exchange.

OTHER DATA SOURCES:



### Legend

- 
- Settlements
- First Nation Reserves
- Road
- Highway
- Multi-lane Highway
- +— Railway
- Watercourse
- Waterbody
- Lower Tier Municipality
- Upper and Single Tier Municipality
- Source Protection Area Boundary

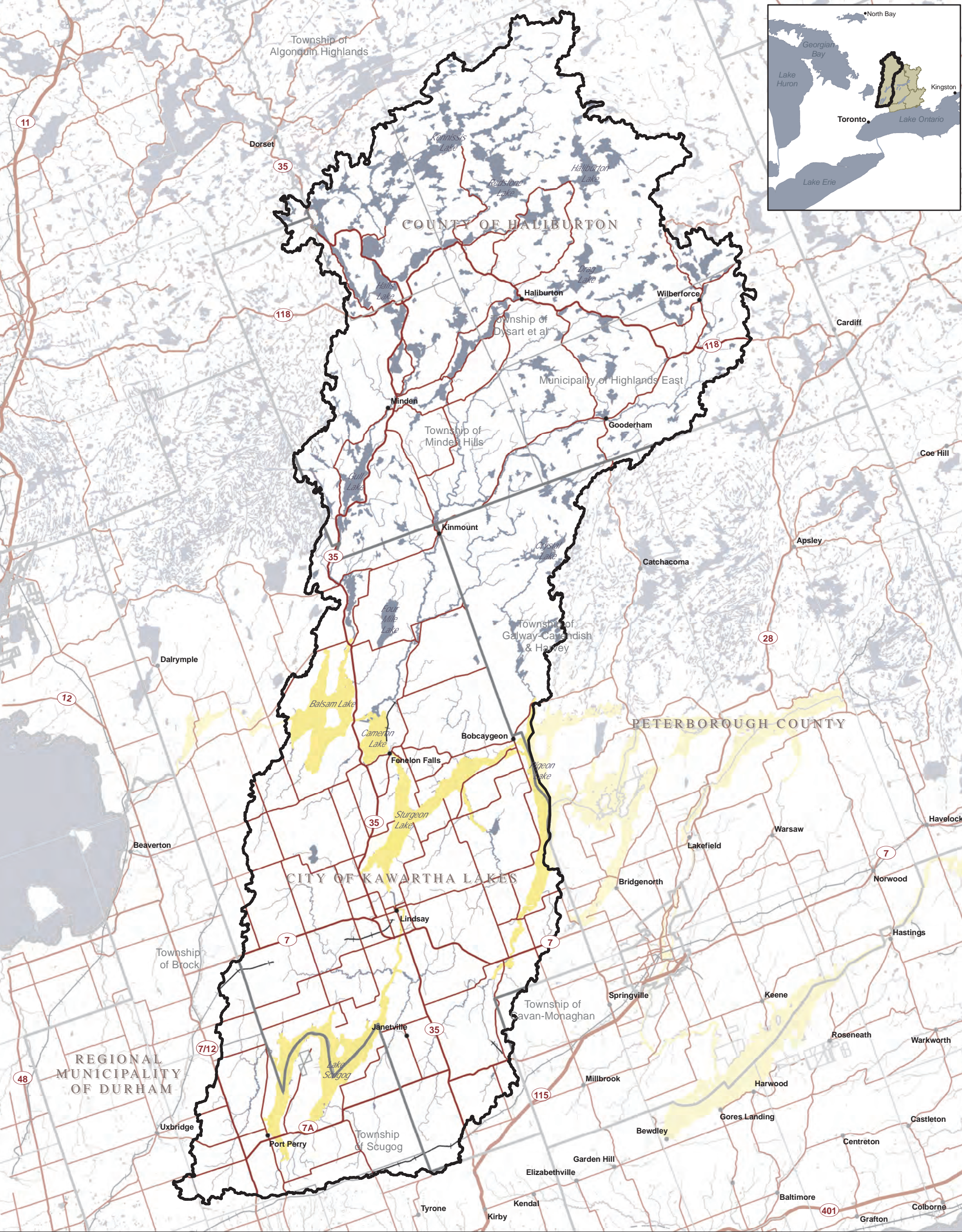


A scale bar labeled "Kilometres" with markings at 0, 5, 10, 20, 30, and 40. A white segment is highlighted between the 5 and 10 marks.

## Trent Conservation Coalition Source Protection Region

[www.trentsourceprotection.on.ca](http://www.trentsourceprotection.on.ca)





THIS MAP has been prepared for the purpose of meeting the provincial requirements under the Clean Water Act, 2006. If it is proposed to use it for another purpose, it would be advisable to consult with the responsible Conservation Authority.

PRODUCED BY Kawartha Region Conservation Authority on behalf of the Trent Conservation Coalition Source Protection Committee, March 2010, with data supplied under licence by members of the Ontario Geospatial Data Exchange.

OTHER DATA SOURCES:

Ontario  
Made possible through the support of the Government of Ontario

**Legend**

- Settlements
- Road
- Highway
- Multi-lane Highway
- Railway
- Watercourse
- Waterbody
- Lower Tier Municipality
- Upper and Single Tier Municipality
- Source Protection Area Boundary

— Federal Lands

N

0 5 10 20 30 40

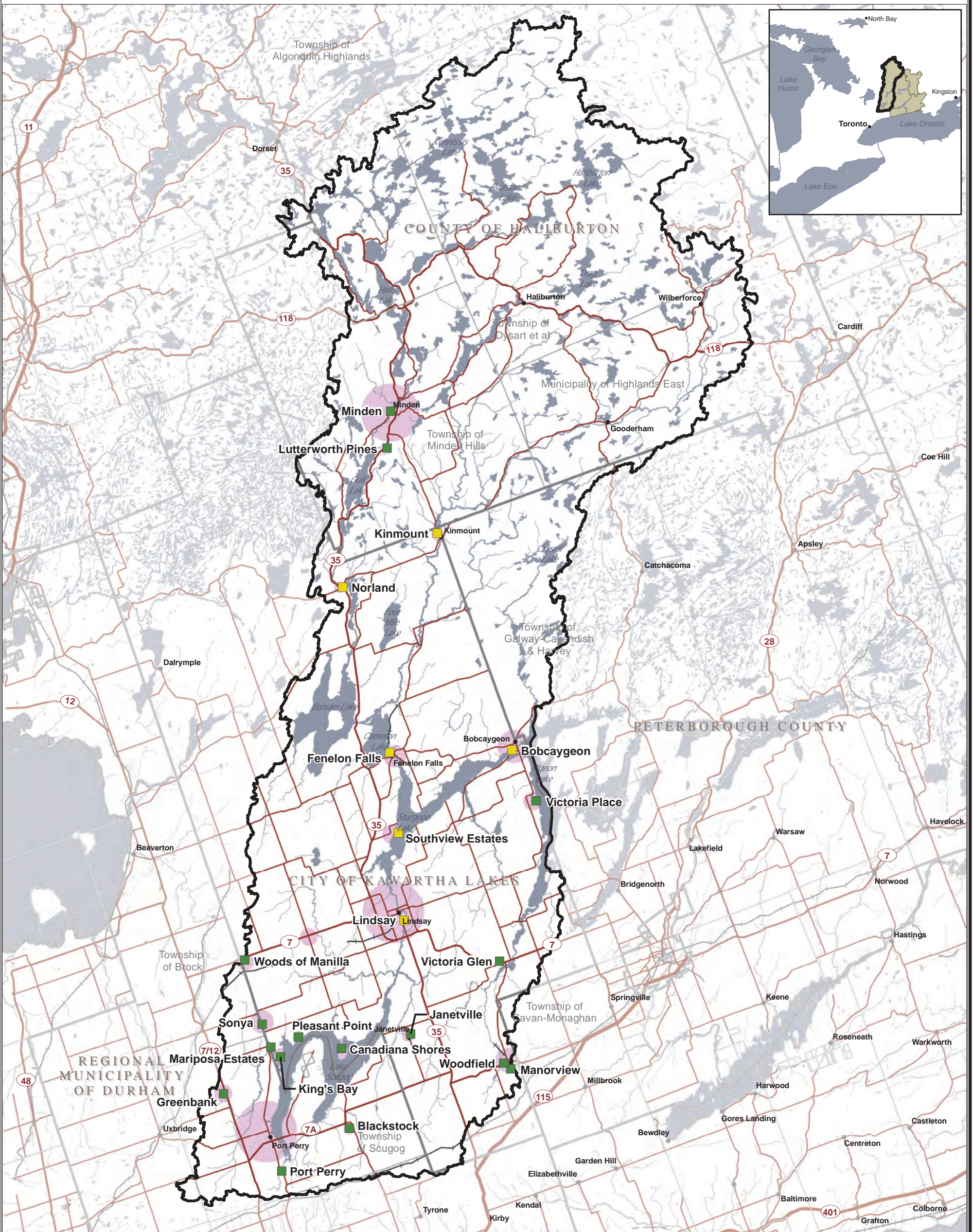
Kilometres

Trent Conservation Coalition  
Source Protection Region

[www.trentsourceprotection.on.ca](http://www.trentsourceprotection.on.ca)

Proposed Trent Assessment Report Map 2-9 (KH)





THIS MAP has been prepared for the purpose of meeting the provincial requirements under the Clean Water Act, 2006. If it is proposed to use it for another purpose, it would be advisable to consult with the responsible Conservation Authority.

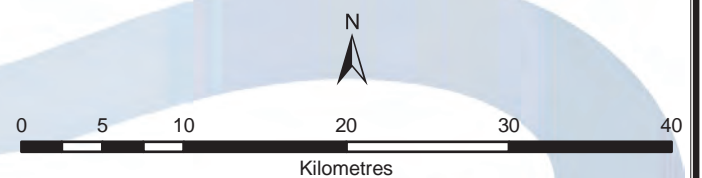
PRODUCED BY Kawartha Region Conservation Authority on behalf of the Trent Conservation Coalition Source Protection Committee, March 2010, with data supplied under licence by members of the Ontario Geospatial Data Exchange.

OTHER DATA SOURCES:  
Municipal Surface Water Intakes: Based on GPS data of approximate intake locations.  
Municipal Wells: Based on GPS data of approximate well locations.

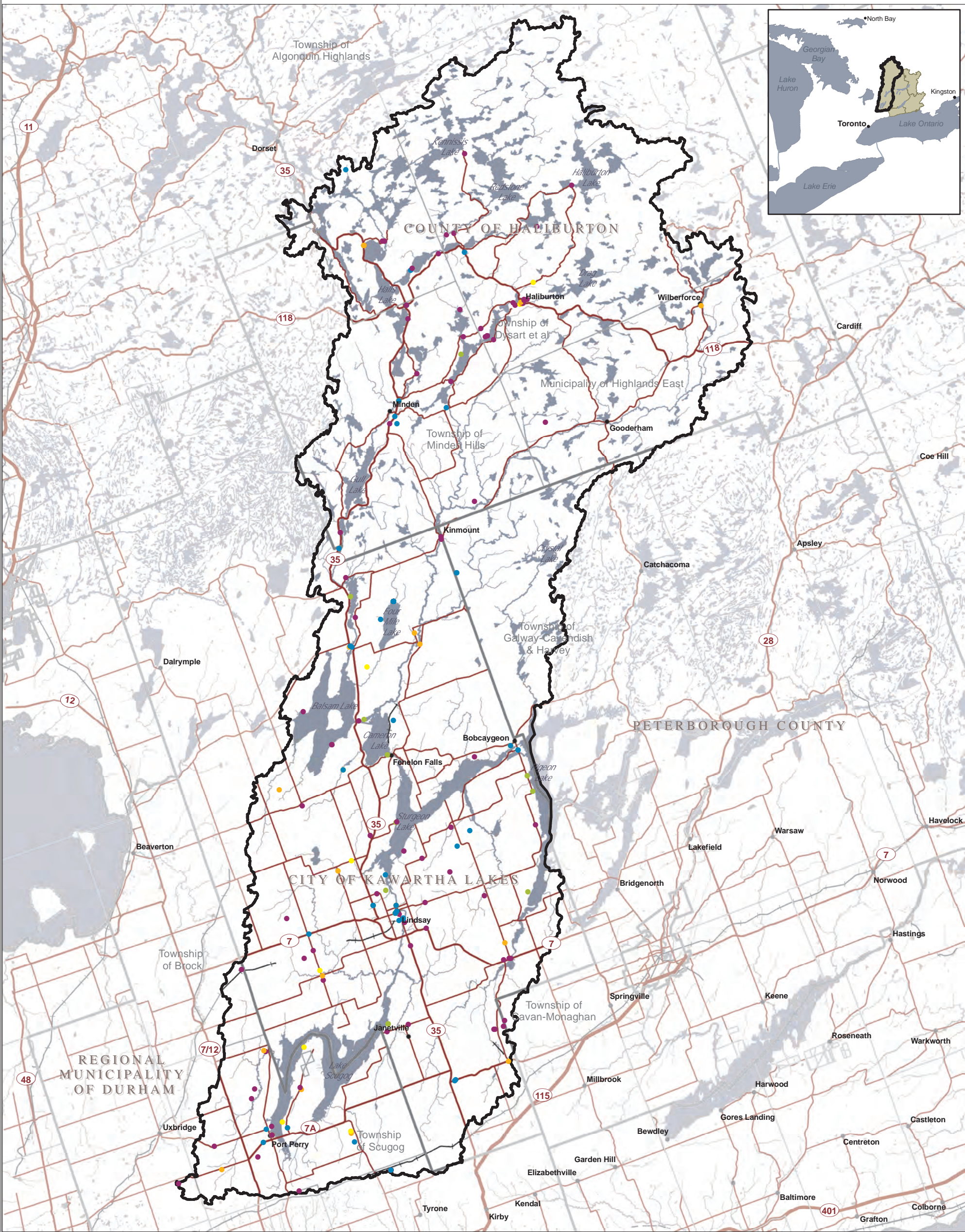
Ontario  
Made possible through the support of the Government of Ontario

- Legend**
- Settlements
  - Road
  - Highway
  - Multi-lane Highway
  - Railway
  - Watercourse
  - Waterbody
  - Lower Tier Municipality
  - Upper and Single Tier Municipality
  - Source Protection Area Boundary

- Water Systems**
- Municipal Surface Water Intake
  - Municipal Well
  - Served Area - Approximate







THIS MAP has been prepared for the purpose of meeting the provincial requirements under the Clean Water Act, 2006. If it is proposed to use it for another purpose, it would be advisable to consult with the responsible Conservation Authority.

PRODUCED BY Kawartha Region Conservation Authority on behalf of the Trent Conservation Coalition Source Protection Committee, March 2010, with data supplied under licence by members of the Ontario Geospatial Data Exchange.

OTHER DATA SOURCES:

Ontario  
Made possible through the support of the Government of Ontario

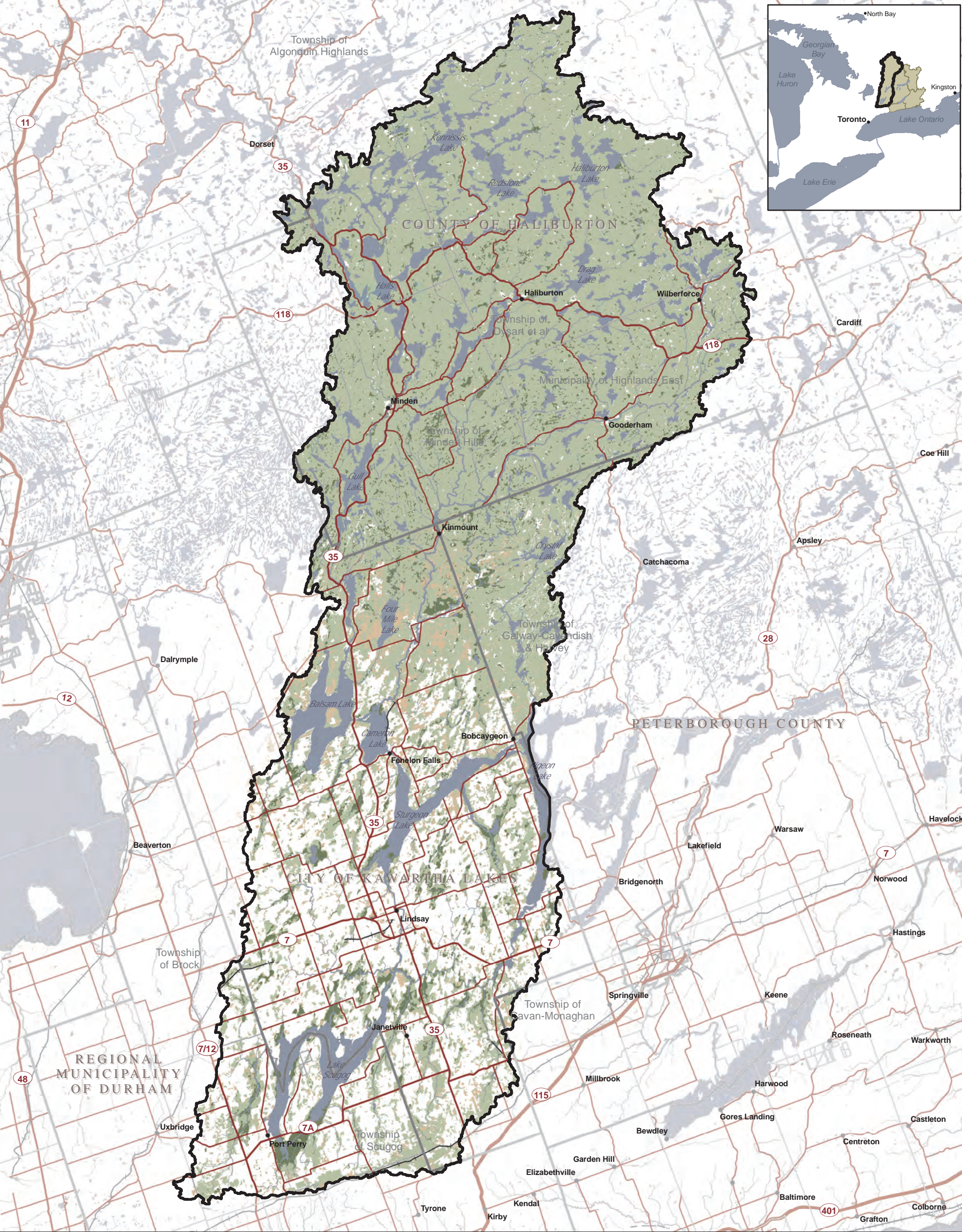
- Legend**
- Settlements
  - Road
  - Highway
  - Multi-lane Highway
  - Railway
  - Watercourse
  - Waterbody
  - Lower Tier Municipality
  - Upper and Single Tier Municipality
  - Source Protection Area Boundary
- Other Drinking Water Systems**
- 3 - Large Municipal Non-Residential System
  - 4 - Small Municipal Non-Residential System
  - 5 - Non-Municipal Year-Round Residential System
  - 6 - Non-Municipal Seasonal Residential System
  - 7 - Large Non-Municipal Non-Residential System
  - 8 - Small Non-Municipal Non-Residential System

0 5 10 20 30 40  
Kilometres

**Trent Conservation Coalition  
Source Protection Region**

[www.trentsourceprotection.on.ca](http://www.trentsourceprotection.on.ca)





Proposed Trent Assessment Report Map 2-12 (KH)

THIS MAP has been prepared for the purpose of meeting the provincial requirements under the Clean Water Act, 2006. If it is proposed to use it for another purpose, it would be advisable to consult with the responsible Conservation Authority.

PRODUCED BY Kawartha Region Conservation Authority on behalf of the Trent Conservation Coalition Source Protection Committee, March 2010, with data supplied under licence by members of the Ontario Geospatial Data Exchange.



- Legend

• Settlements

— Road

— Highway

— Multi-lane Highway

— Railway

— Watercourse

— Waterbody

— Lower Tier Municipality

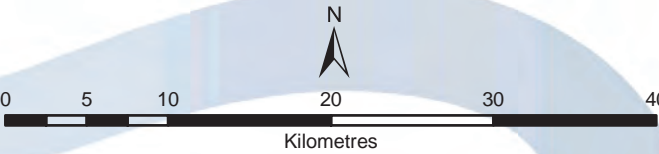
— Upper and Single Tier Municipality

— Source Protection Area Boundary
- Natural Features

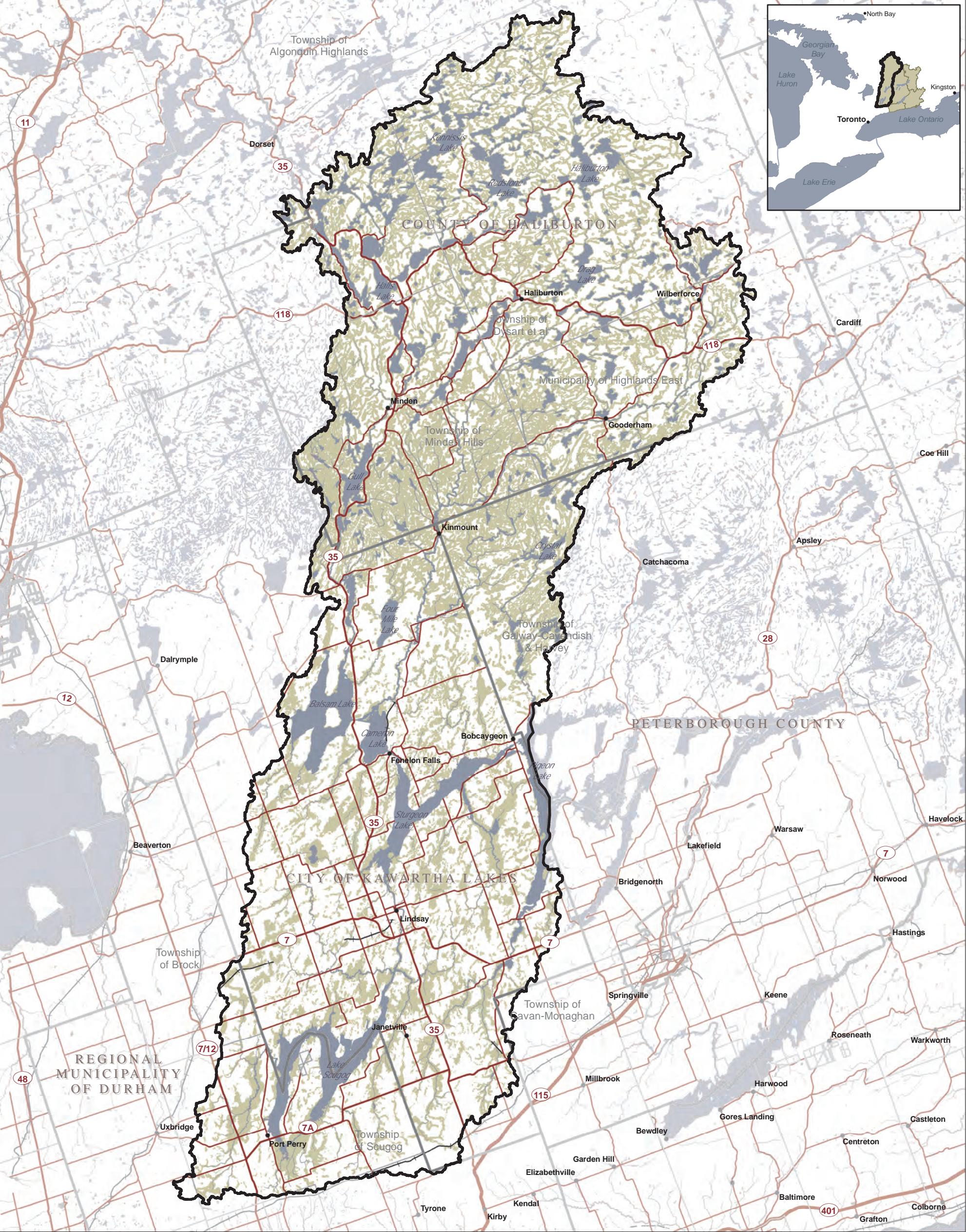
Meadow

Wetland

Woodland







THIS MAP has been prepared for the purpose of meeting the provincial requirements under the Clean Water Act, 2006. If it is proposed to use it for another purpose, it would be advisable to consult with the responsible Conservation Authority.

PRODUCED BY Kawartha Region Conservation Authority on behalf of the Trent Conservation Coalition Source Protection Committee, March 2010, with data supplied under licence by members of the Ontario Geospatial Data Exchange.

OTHER DATA SOURCES:

Ontario  
Made possible through the support of the Government of Ontario

- Legend
- Settlements

—

 Road

—

 Highway

—

 Multi-lane Highway

—

 Railway

—

 Watercourse

—

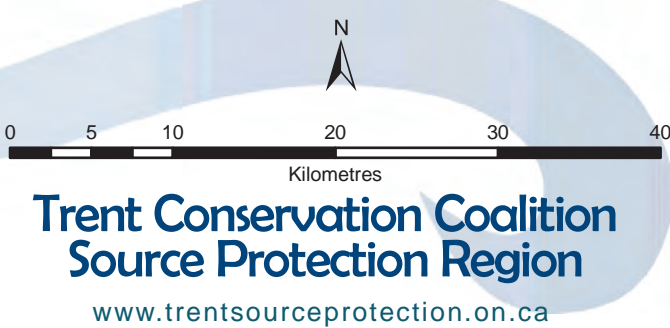
 Waterbody

—

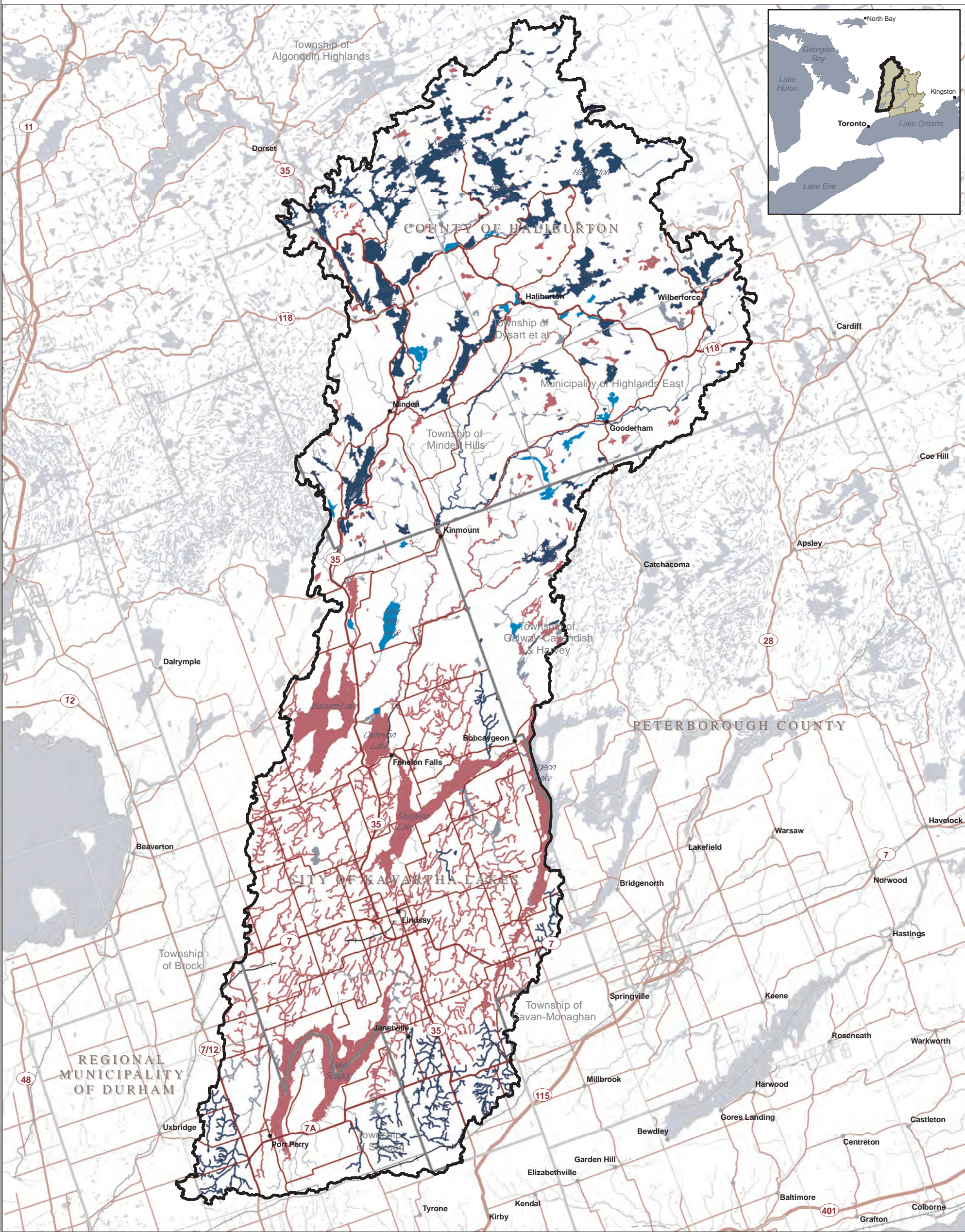
 Lower Tier Municipality

—

 Upper and Single Tier Municipality
- Source Protection Area Boundary
- Vegetated Riparian Area







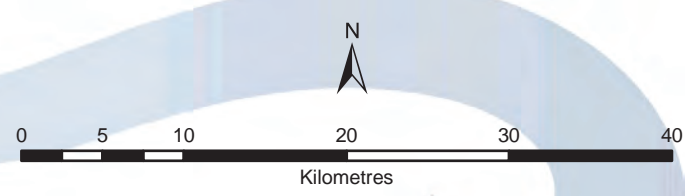
THIS MAP has been prepared for the purpose of meeting the provincial requirements under the Clean Water Act, 2006. If it is proposed to use it for another purpose, it would be advisable to consult with the responsible Conservation Authority.

PRODUCED BY Kawartha Region Conservation Authority on behalf of the Trent Conservation Coalition Source Protection Committee, March 2010, with data supplied under licence by members of the Ontario Geospatial Data Exchange.

OTHER DATA SOURCES:

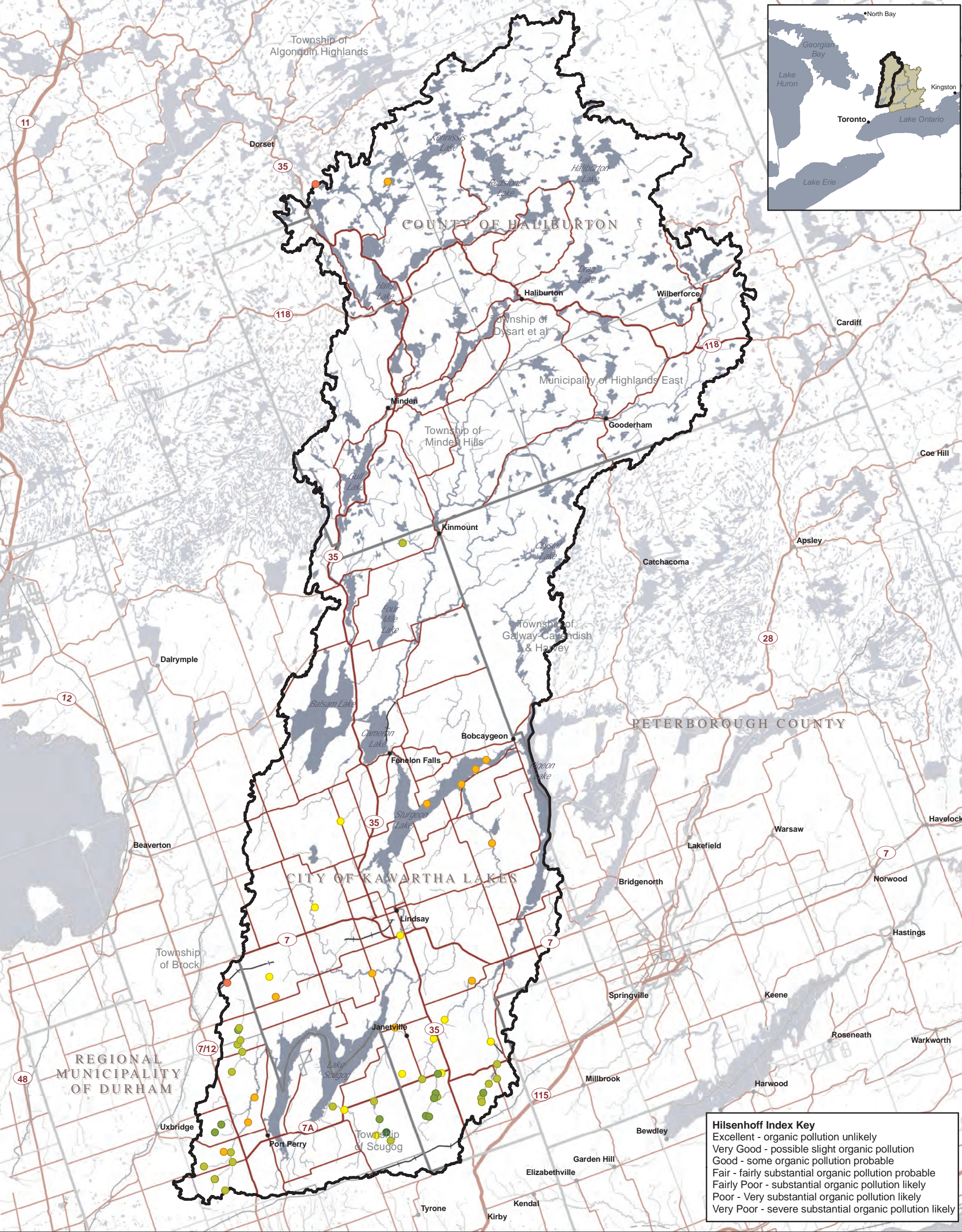
Ontario  
Made possible through the support of the Government of Ontario

- Legend**
- Settlements
  - Road
  - Highway
  - Multi-lane Highway
  - Railway
  - Watercourse
  - Lower Tier Municipality
  - Upper and Single Tier Municipality
  - Source Protection Area Boundary
- Waterbody/Watercourse**
- Cold Water
  - Cool Water
  - Warm Water
  - Unknown



Trent Conservation Coalition  
Source Protection Region  
[www.trentsourceprotection.on.ca](http://www.trentsourceprotection.on.ca)





THIS MAP has been prepared for the purpose of meeting the provincial requirements under the Clean Water Act, 2006. If it is proposed to use it for another purpose, it would be advisable to consult with the responsible Conservation Authority.

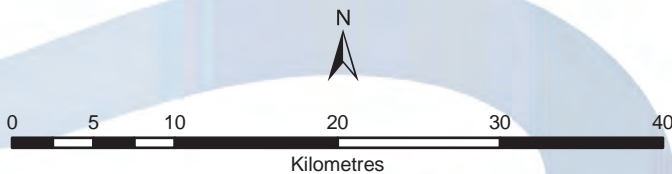
PRODUCED BY Kawartha Region Conservation Authority on behalf of the Trent Conservation Coalition Source Protection Committee, March 2010, with data supplied under licence by members of the Ontario Geospatial Data Exchange.

OTHER DATA SOURCES: Hilsenhoff Scoring: Kawartha Conservation

**Ontario**  
Made possible through the support of the Government of Ontario

- Legend**
- Settlements
  - Road
  - Highway
  - Multi-lane Highway
  - Railway
  - Watercourse
  - Waterbody
  - Lower Tier Municipality
  - Upper and Single Tier Municipality
  - Source Protection Area Boundary

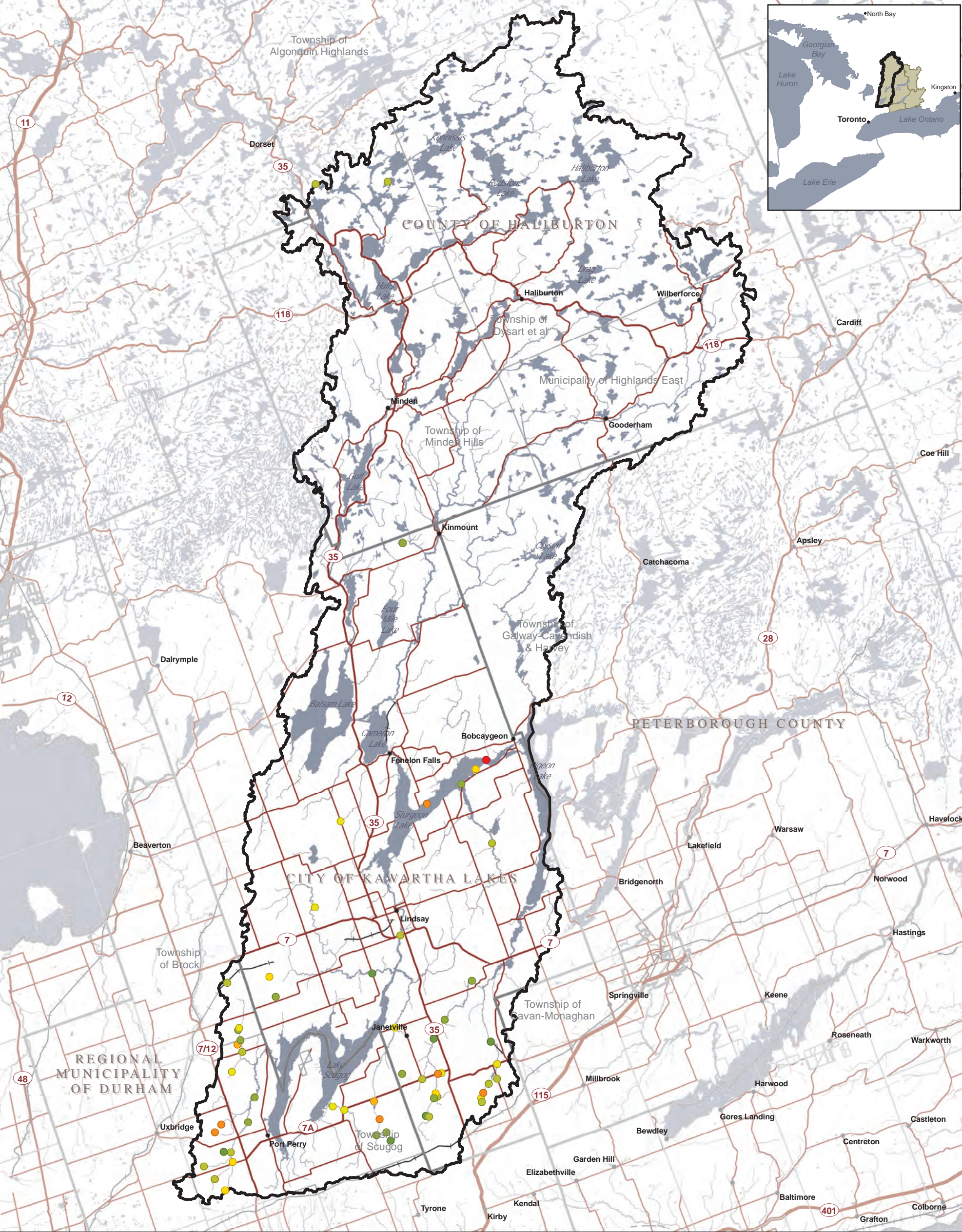
- Hilsenhoff Scoring**
- 0-3.75 (Excellent)
  - 3.76-4.25 (Very Good)
  - 4.26-5.00 (Good)
  - 5.01-5.75 (Fair)
  - 5.76-6.50 (Fairly Poor)
  - 6.51-7.25 (Poor)
  - 7.26-10.00 (Very Poor)



**Trent Conservation Coalition  
Source Protection Region**

[www.trentsourceprotection.on.ca](http://www.trentsourceprotection.on.ca)





THIS MAP has been prepared for the purpose of meeting the provincial requirements under the Clean Water Act, 2006. If it is proposed to use it for another purpose, it would be advisable to consult with the responsible Conservation Authority.

PRODUCED BY Kawartha Region Conservation Authority on behalf of the Trent Conservation Coalition Source Protection Committee, March 2010, with data supplied under licence by members of the Ontario Geospatial Data Exchange.

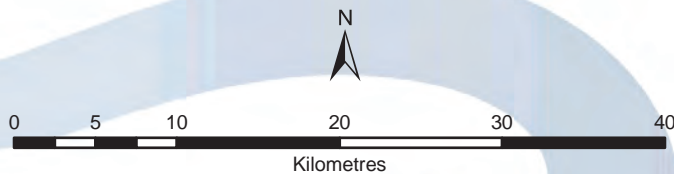
OTHER DATA SOURCES: Simpson's Scoring: Kawartha Conservation

Ontario  
Made possible through the support of the Government of Ontario

Legend

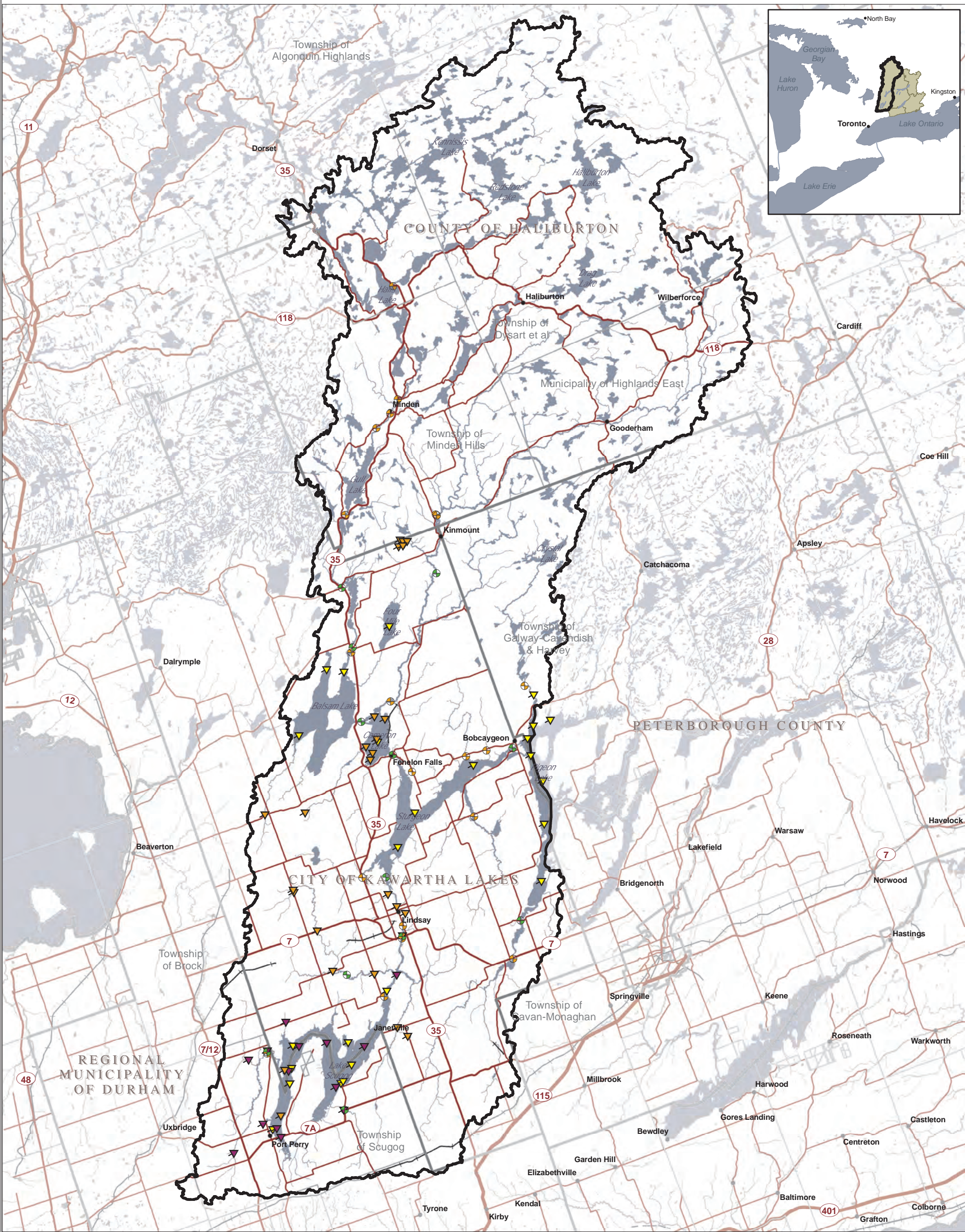
- Settlements
- Road
- Highway
- Multi-lane Highway
- Railway
- Watercourse
- Waterbody
- Lower Tier Municipality
- Upper and Single Tier Municipality
- Source Protection Area Boundary

- Simpson's Scoring  
Note: 1 = High Diversity  
0 = Low Diversity
- 0-0.1
  - 0.11-0.2
  - 0.21-0.3
  - 0.31-0.4
  - 0.41-0.5
  - 0.51-0.6
  - 0.61-0.7
  - 0.71-0.8
  - 0.81-0.9
  - 0.91-1.0



Trent Conservation Coalition  
Source Protection Region  
[www.trentsourceprotection.on.ca](http://www.trentsourceprotection.on.ca)





THIS MAP has been prepared for the purpose of meeting the provincial requirements under the Clean Water Act, 2006. If it is proposed to use it for another purpose, it would be advisable to consult with the responsible Conservation Authority.

PRODUCED BY Kawartha Region Conservation Authority on behalf of the Trent Conservation Coalition Source Protection Committee, March 2010, with data supplied under licence by members of the Ontario Geospatial Data Exchange.

OTHER DATA SOURCES:

Ontario  
Made possible through the support of the Government of Ontario

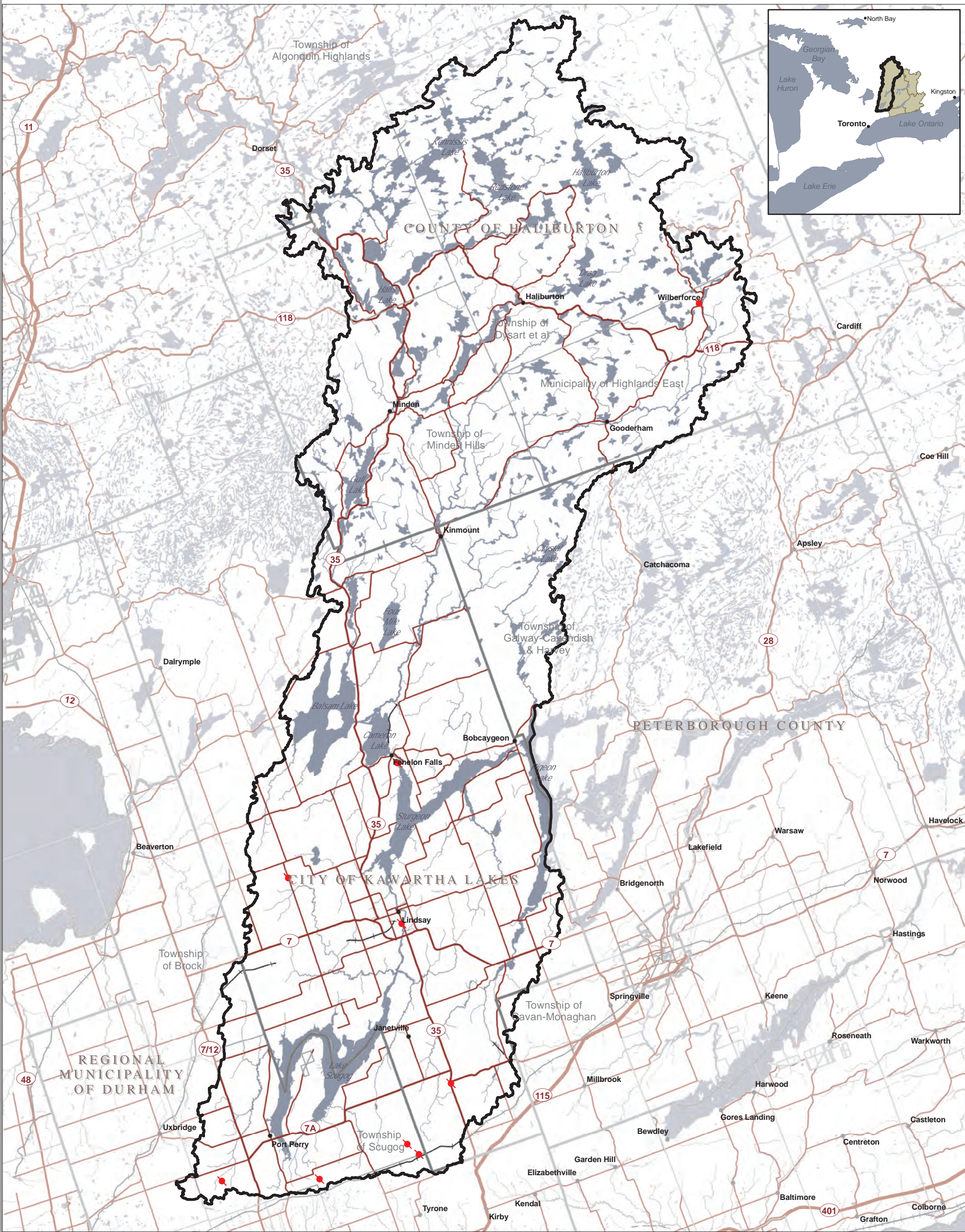
- Legend**
- Settlements
  - Road
  - Highway
  - Multi-lane Highway
  - Railway
  - Watercourse
  - Waterbody
  - Lower Tier Municipality
  - Upper and Single Tier Municipality
  - Source Protection Area Boundary
- PWQMN Sampling Sites**
- Active
  - Historic
- Other Sampling Sites**
- ▲ KWW Sites
  - ▲ LSEMP Sites
  - ▲ Lake Partner Program

0 5 10 20 30 40  
Kilometres

**Trent Conservation Coalition  
Source Protection Region**

[www.trentsourceprotection.on.ca](http://www.trentsourceprotection.on.ca)





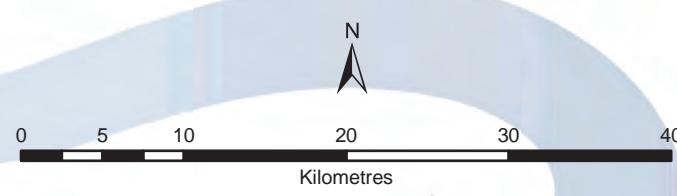
THIS MAP has been prepared for the purpose of meeting the provincial requirements under the Clean Water Act, 2006. If it is proposed to use it for another purpose, it would be advisable to consult with the responsible Conservation Authority.

PRODUCED BY Kawartha Region Conservation Authority on behalf of the Trent Conservation Coalition Source Protection Committee, March 2010, with data supplied under licence by members of the Ontario Geospatial Data Exchange.

OTHER DATA SOURCES:

Ontario  
Made possible through the support of the Government of Ontario

- Legend**
- Settlements
  - Road
  - Highway
  - Multi-lane Highway
  - Railway
  - Watercourse
  - Waterbody
  - Lower Tier Municipality
  - Upper and Single Tier Municipality
  - Source Protection Area Boundary
  - PGMN Wells



Trent Conservation Coalition  
Source Protection Region  
[www.trentsourceprotection.on.ca](http://www.trentsourceprotection.on.ca)