

Approved

Ganaraska Assessment Report - MAP BOOK

Volume 2 of 2
Approved October 1, 2014
Amended January 18, 2017

Ganaraska Region Source Protection Area



Made possible through the support
of the Government of Ontario

CHAPTER 1: Introduction

- Map 1-1: Trent Conservation Coalition Source Protection Region
- Map 1-2: Ganaraska Region Source Protection Area

CHAPTER 2: Watershed Characterization Maps

- Map 2-1: Source Protection Area Boundary
- Map 2-2: Watersheds and Subwatershed Areas
- Map 2-3: Physiographic Regions
- Map 2-4: Areas of Settlement
- Map 2-5: Municipal Boundaries
- Map 2-6: Population
- Map 2-7: Population Density
- Map 2-8: Federal Lands
- Map 2-9: Municipal Residential Drinking Water Systems
- Map 2-10: Other Drinking Water Systems
- Map 2-11: Natural Vegetative Cover
- Map 2-12: Vegetated Riparian Area
- Map 2-13: Aquatic Habitat by Stream Temperature
- Map 2-14: Hilsenhoff Water Quality Index
- Map 2-15: Simpson's Species Diversity Index
- Map 2-16: Surface Water Quality Monitoring Sites
- Map 2-17: Groundwater Quality Monitoring Wells

CHAPTER 3:

Water Budget & Water Quantity Stress Assessment

3.1 Introduction

- Map 3-1: Conceptual Water Budget Watersheds

3.2 Conceptual Water Budget

- Map 3-2: Climate Stations
- Map 3-3: Meteorological Zones
- Map 3-4: Precipitation Distribution
- Map 3-5: Bedrock Elevation and Geology Types
- Map 3-6: Surface Topography
- Map 3-7: Surficial Geology
- Map 3-8: Overburden Thickness
- Map 3-9: Physiographic Regions
- Map 3-10: Soils
- Map 3-11: Hydrologic Soil Groups
- Map 3-12: Land Cover
- Map 3-13: Hydrometric Stations and Spot Flows
- Map 3-14: Water Control Structures
- Map 3-15: Aquatic Habitat by Stream Temperatures
- Map 3-16: Potential Groundwater Recharge
- Map 3-17: Hummocky Topography
- Map 3-18: Water Table Elevation
- Map 3-19: Potentiometric Surface

- Map 3-20: Potential Groundwater Discharge
- Map 3-21: Potential Groundwater Discharge from Thermography
- Map 3-22: Provincial Groundwater Monitoring Network Wells
- Map 3-23: Permitted Water Takings
- Map 3-24: Registered Domestic Wells
- Map 3-25: Municipal Wells and Intakes

3.3 Tier 1 Water Budget & Water Quantity Stress Assessment

- Maps 3-26: Tier 1 -- Water Budget Subwatersheds
- Maps 3-27: Tier 1 – Surface Water Stressed Subwatersheds
- Maps 3-28: Tier 1 – Groundwater Stressed Subwatersheds

CHAPTER 4:

Surface Water Systems: Water Quality Risk Assessment

- Map 4-1: Cobourg Intake Protection Zones and Vulnerability Scores
- Map 4-2: Newcastle Intake Protection Zones and Vulnerability Scores
- Map 4-3: Port Hope Intake Protection Zones and Vulnerability Scores
- Map 4-4: Cobourg Managed Lands, Livestock Density and Total Impervious Surface Area
- Map 4-5: Newcastle Managed Lands, Livestock Density and Total Impervious Surface Area
- Map 4-6: Port Hope Managed Lands, Livestock Density and Total Impervious Surface Area
- Map 4-7: Cobourg Areas of Significant, Moderate and Low Drinking Water Threats
- Map 4-8: Newcastle Areas of Significant, Moderate and Low Drinking Water Threats
- Map 4-9: Port Hope Areas of Significant, Moderate and Low Drinking Water Threats
- 4-10: Cobourg Intake Protection Zones
- 4-11: Newcastle Intake Protection Zones
- 4-12: Port Hope Intake Protection Zones
- 4-13: Cobourg Intake Protection Zone 3 Threats
- 4-14: Newcastle Intake Protection Zone 3 Threats
- 4-15: Port Hope Intake Protection Zone 3 Threats

CHAPTER 5:

Groundwater Systems: Water Quality Risk Assessment

- Map 5-1: Municipal Groundwater System Supply Wells
- Map 5-2: Orono Monitoring Wells
- Map 5-3: Creighton Heights Wellhead Protection Areas and Vulnerability Scores
- Map 5-4: Camborne Wellhead Protection Areas and Vulnerability Scores

- Map 5-5: Orono Wellhead Protection Areas and Vulnerability Scores
- Map 5-6: Creighton Heights Managed Lands, Livestock Density and Total Impervious Surface Area
- Map 5-7: Creighton Heights Areas of Significant, Moderate and Low Drinking Water Threats
- Map 5-8: Camborne Managed Lands, Livestock Density and Total Impervious Surface Area
- Map 5-9: Camborne Areas of Significant, Moderate and Low Drinking Water Threats
- Map 5-10: Orono Managed Lands, Livestock Density and Total Impervious Surface Area
- Map 5-11: Orono Areas of Significant, Moderate and Low Drinking Water Threats

CHAPTER 6: Landscape-Scale Groundwater Analyses

6.1 Groundwater Vulnerability & Highly Vulnerable Aquifers

- Map 6-1: Aquifer Vulnerability
- Map 6-2: Highly Vulnerable Aquifers
- Map 6-3: Highly Vulnerable Aquifers Vulnerability Scores

6.2 Significant Groundwater Recharge Areas

- Map 6-4: Significant Groundwater Recharge Areas
- Map 6-5: Significant Groundwater Recharge Areas Vulnerability Scores

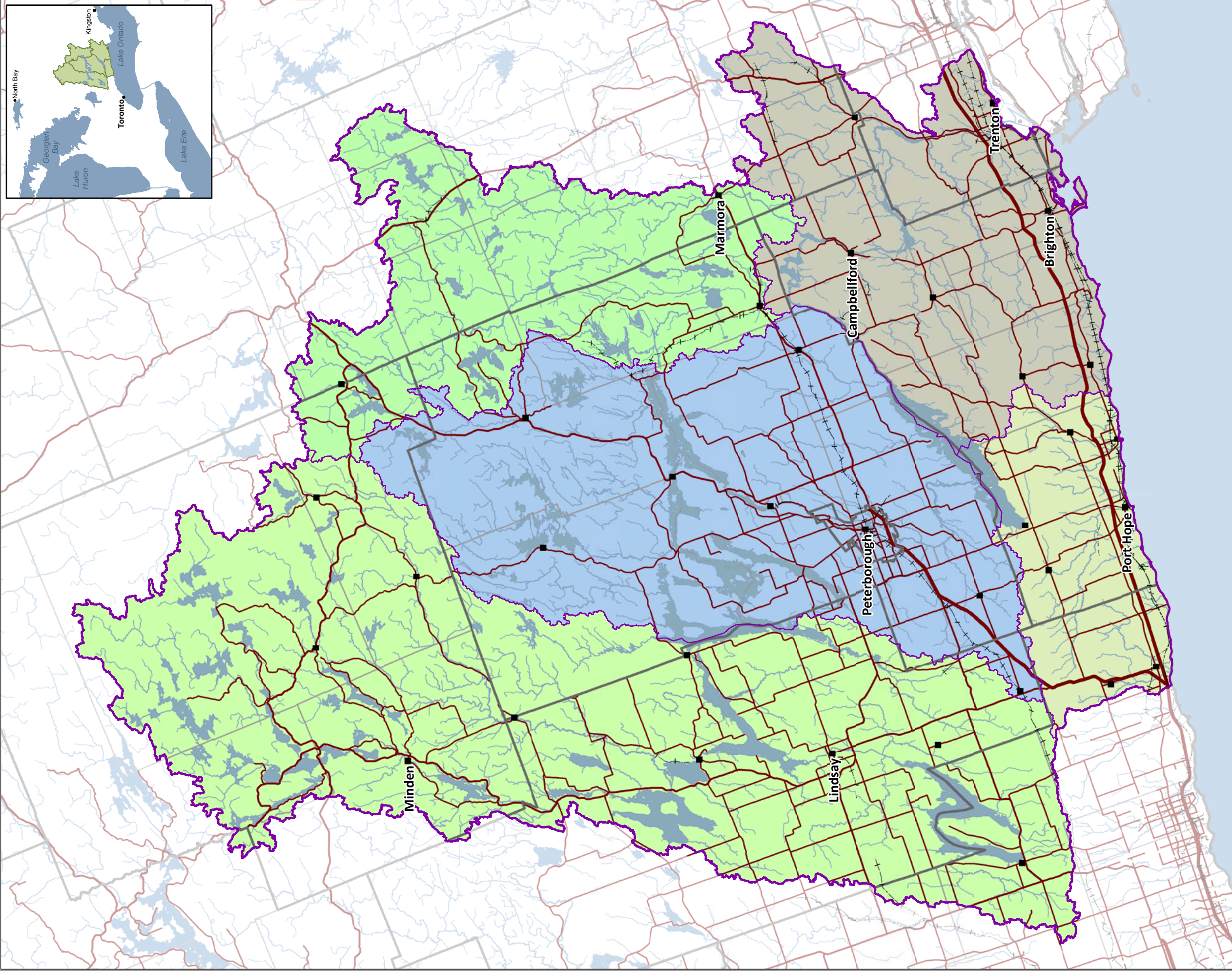
6.3 Water Quality Risk Assessment

Highly Vulnerable Aquifers

- Map 6-6: Highly Vulnerable Aquifers: Managed Lands
- Map 6-7: Highly Vulnerable Aquifers: Livestock Density
- Map 6-8: Highly Vulnerable Aquifers: Total Impervious Surfaces
- Map 6-9: Highly Vulnerable Aquifers Vulnerability Scores and Areas for Threats

Significant Groundwater Recharge Areas

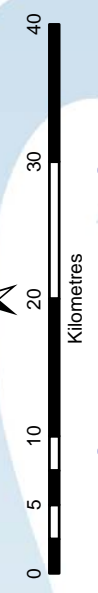
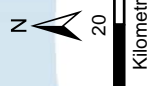
- Map 6-10: Significant Groundwater Recharge Areas: Managed Lands
- Map 6-11: Significant Groundwater Recharge Areas: Livestock Density
- Map 6-12: Significant Groundwater Recharge Areas: Total Impervious Surfaces
- Map 6-13: Significant Groundwater Recharge Areas Vulnerability Scores and Areas for Threats

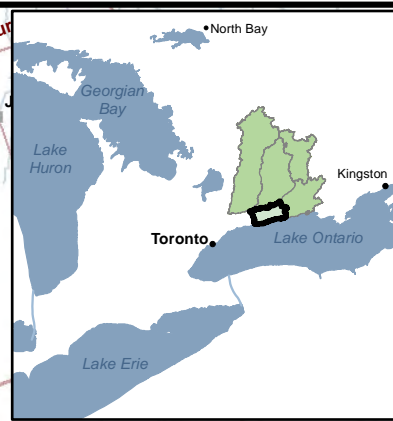


This map has been prepared for the purpose of meeting the provincial requirements under the Clean Water Act, 2006. If it is proposed to use it for another purpose, it would be advisable to first consult with the responsible conservation authority.

PRODUCED BY Lower Trent Conservation on behalf of the Trent Conservation Coalition Source Protection Committee, March 2010, with data supplied under licence by members of the Ontario Geospatial Data Exchange.

- Legend**
- Settlements
 - - - Railways
 - Watercourse
 - Roads
 - Highways
 - Multi Lane Highways
 - Source Protection Region
 - Source Protection Areas
 - Upper and Single Tier Municipality
 - Lower Tier Municipality
 - Waterbody
- Kawartha-Haliburton Source Protection Area
 - Otonabee-Peterborough Source Protection Area
 - Crowe Valley Source Protection Area
 - Ganaraska Region Source Protection Area
 - Lower Trent Source Protection Area

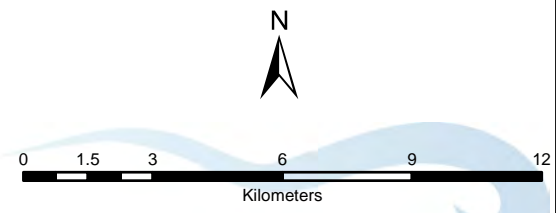
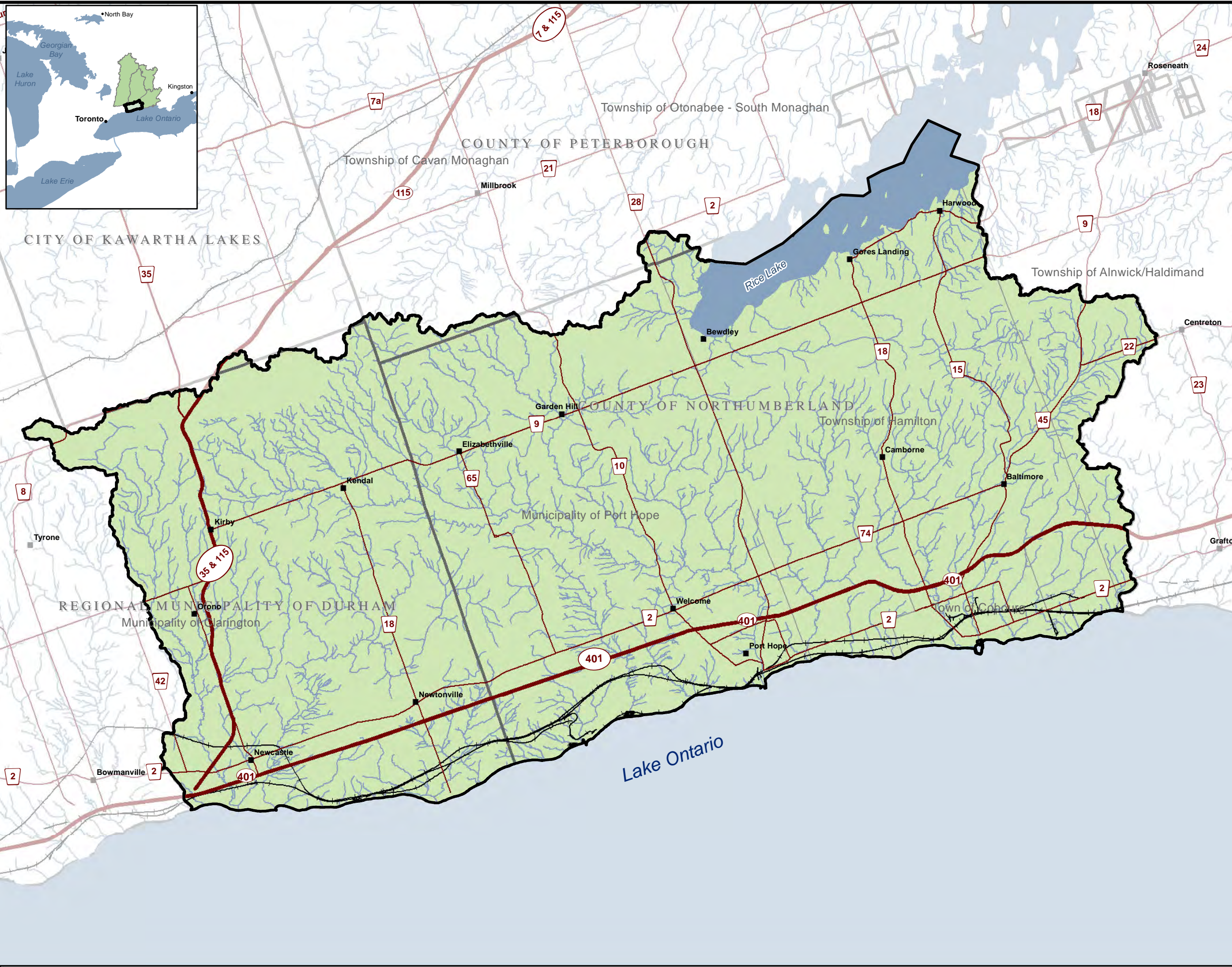




Ganaraska Region Source Protection Area

Ganaraska Region Source Protection Area

- Legend**
- Settlement
 - Road
 - Highway
 - Multi-Lane Highway
 - Railway
 - Watercourse
 - Lower Tier Municipality
 - Upper and Single Tier Municipalities
 - Ganaraska Region Source Protection Area Boundary
 - Waterbody



Trent Conservation Coalition Source Protection Region
www.trentsourceprotection.on.ca

This map has been prepared for the purposes of meeting the Provincial requirements under the Clean Water Act, 2006. If it is proposed to use it for another purpose, it would be advisable to first consult with the responsible Conservation Authority.

PRODUCED BY Ganaraska Region Conservation Authority on behalf of the Trent Conservation Coalition Source Protection Committee, March 2011, with data supplied under licence by members of the Ontario Geospatial Data Exchange.

Made possible through the support of the Government of Ontario