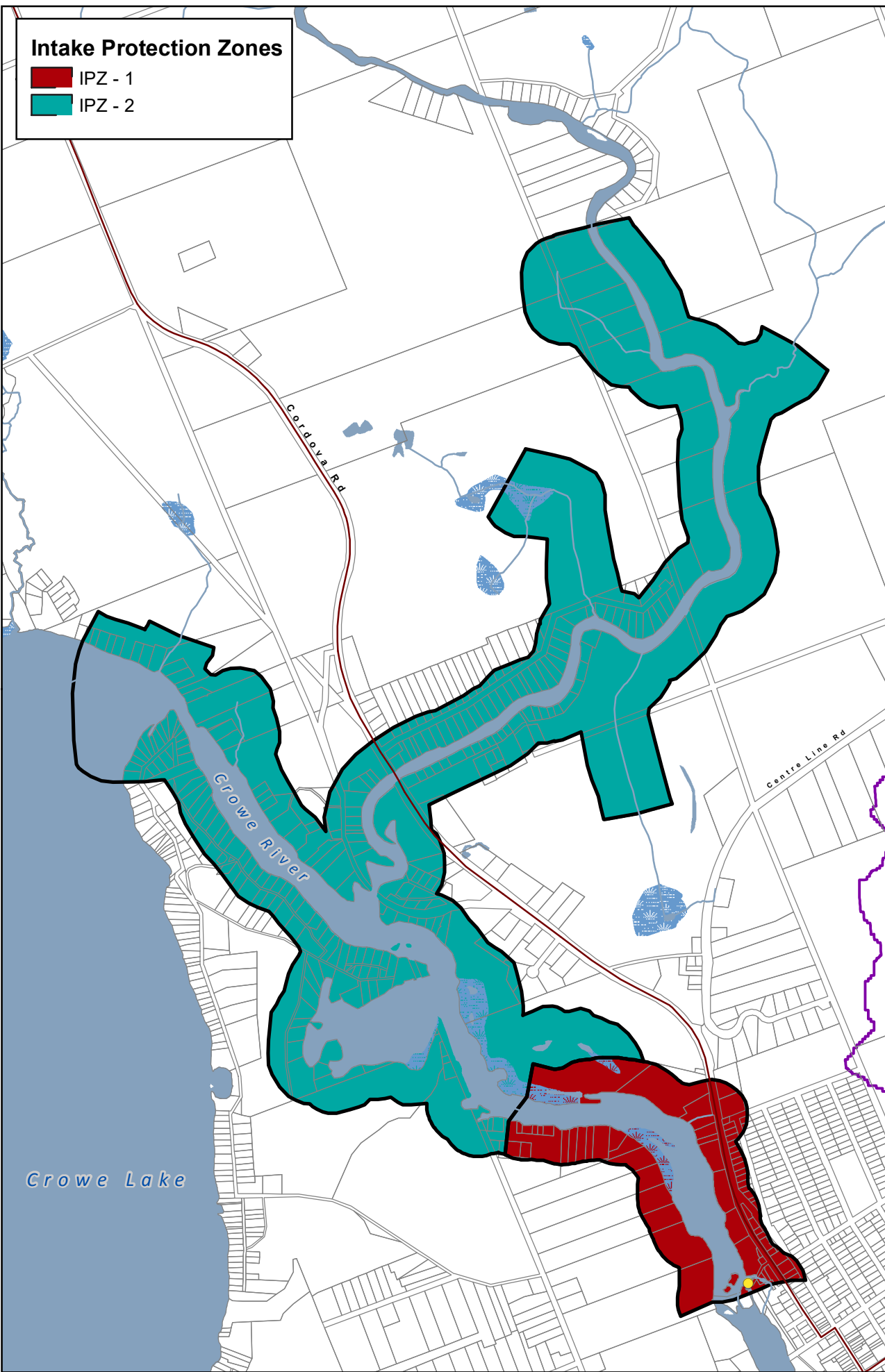
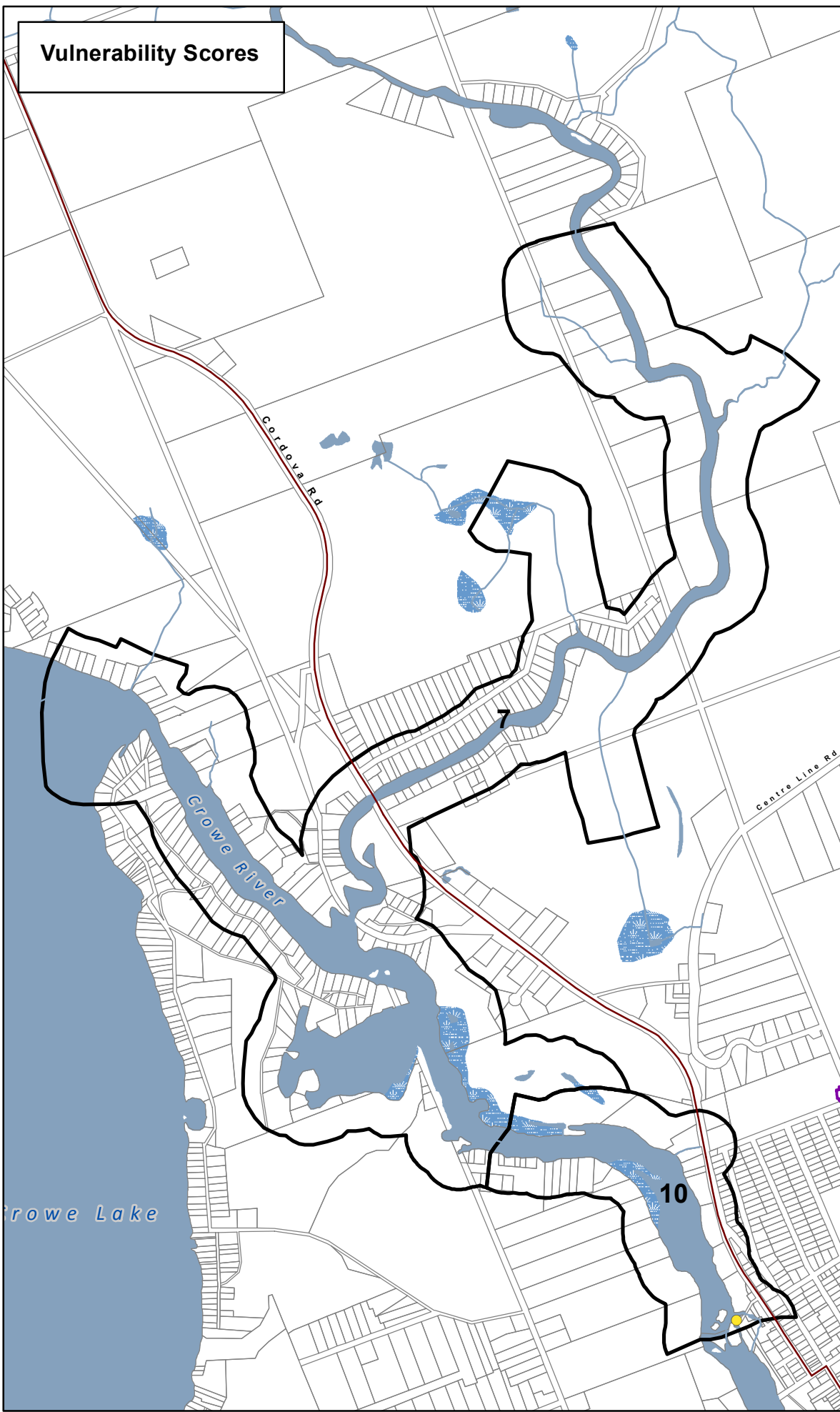


Intake Protection Zones

- IPZ - 1
- IPZ - 2



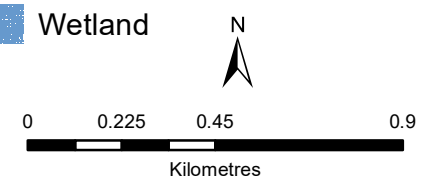
Vulnerability Scores



**Marmora
Municipal Surface
Water System
Crowe Valley
Source Protection Area
Intake Protection Zones &
Vulnerability Scores
(IPZ 1 & 2)**

Legend

- Surface Water Intake
- Railway
- Watercourse
- Main Road
- Highway
- Multi Lane Highway
- Property Boundary
- Source Protection Region
- Source Protection Area
- Upper Tier Municipality
- Lower and Single Tier Municipality
- Waterbody
- Wetland



**Trent Conservation Coalition
Source Protection Region**
www.trentsourceprotection.on.ca

This map has been prepared for the purpose of meeting the provincial requirements under the Clean Water Act, 2006. If it is proposed to use it for another purpose, it would be advisable to first consult with the responsible conservation authority.

PRODUCED BY Lower Trent Conservation on behalf of the Trent Conservation Coalition Source Protection Committee, March 2011 (Updated July 2016), with data supplied under licence by members of the Ontario Geospatial Data Exchange.

Waterbodies and watercourses located within the extent of an intake protection zone are included in that zone.

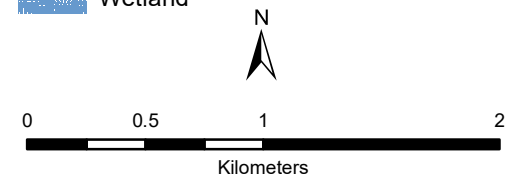


**Marmora
Municipal Surface
Water System
Crowe Valley Source
Protection Area**

**Managed Land, Livestock
Density & Total
Impervious Surface Area**

Legend

- Surface Water Intake
- Railway
- Watercourse
- Main Road
- Highway
- Multi Lane Highway
- Property Boundary
- Source Protection Region
- Source Protection Area
- Lower Tier Municipality
- Upper and Single Tier Municipality
- Intake Protection Zones
- Waterbody
- Wetland

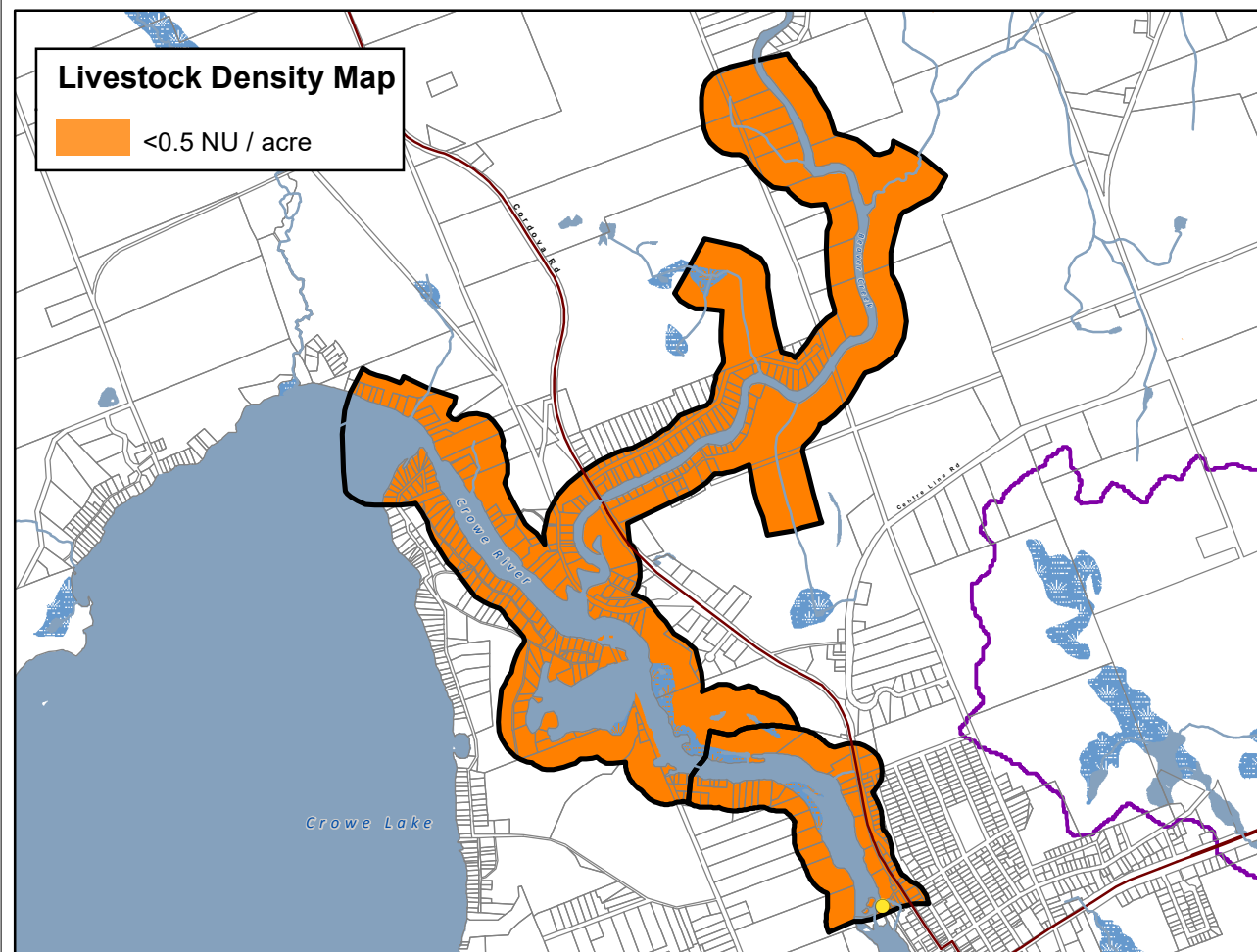
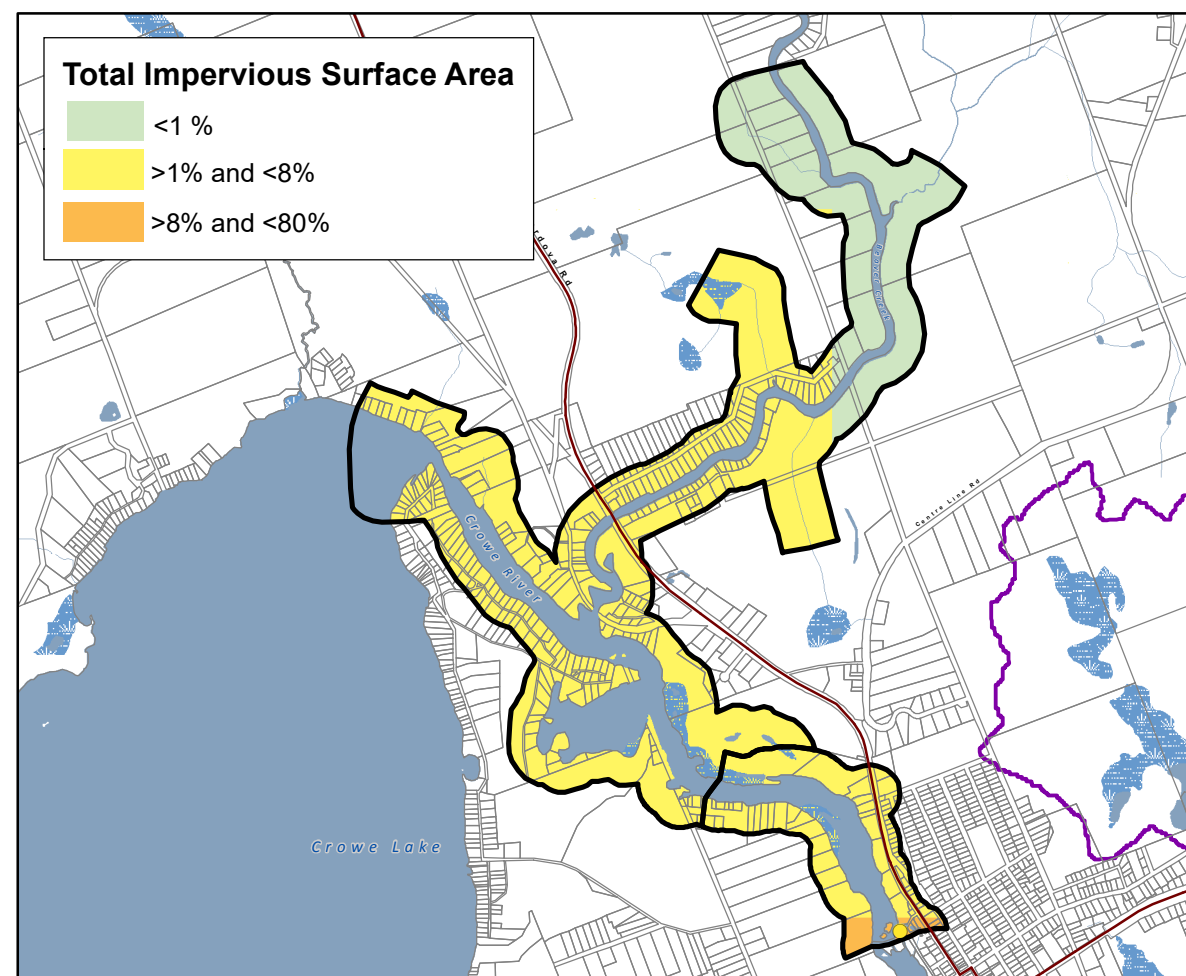
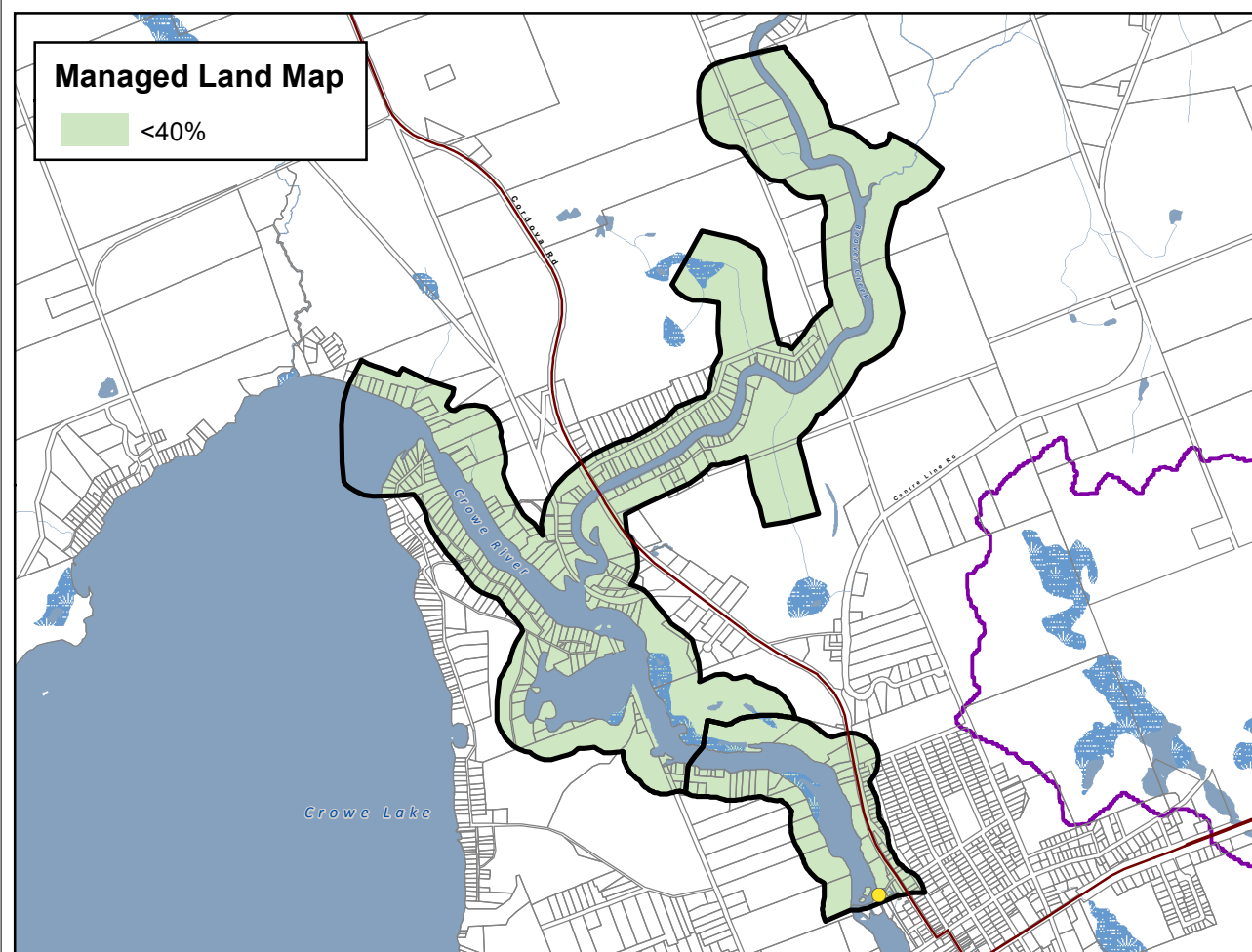


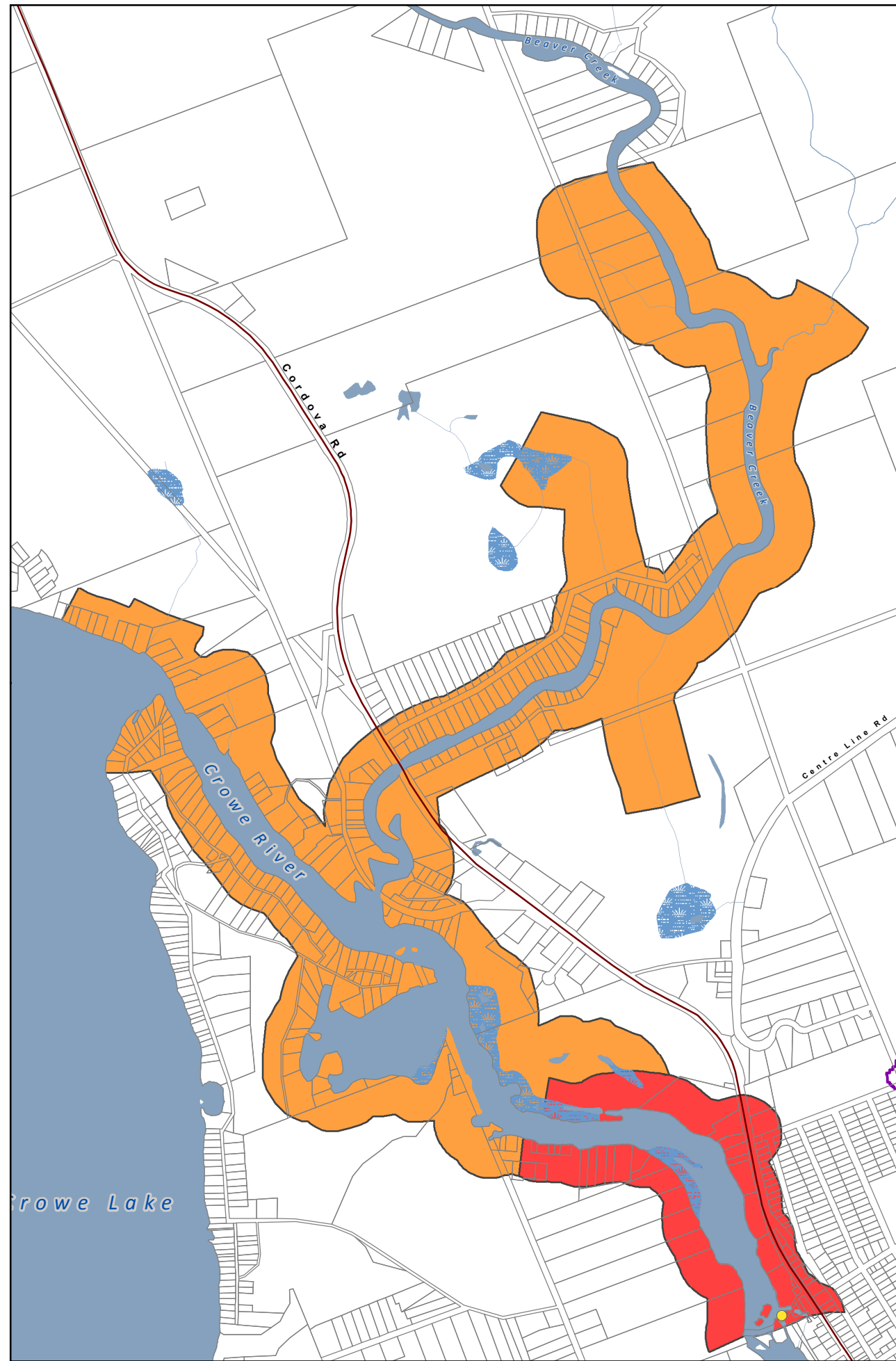
**Trent Conservation Coalition
Source Protection Region**

www.trentsourceprotection.on.ca

This map has been prepared for the purpose of meeting the provincial requirements under the Clean Water Act, 2006. If it is proposed to use it for another purpose, it would be advisable to first consult with the responsible conservation authority.

PRODUCED BY Lower Trent Conservation on behalf of the Trent Conservation Coalition Source Protection Committee, March 2011 (Updated July 2016), with data supplied under licence by members of the Ontario Geospatial Data Exchange.





CHEMICAL THREATS			
Area	Provincial Table of Circumstances		
	Significant	Moderate	Low
	Table 19 (CIPZ10S)	Table 23 (CIPZ10M)	Table 31 (CIPZWE10L)
	-	Table 28 (CIPZWE7M)	Table 36 (CIPZWE7L)

PATHOGEN THREATS			
Area	Provincial Table of Circumstances		
	Significant	Moderate	Low
	Table 45 (PIPZ10S)	Table 49 (PIPZWE10M)	Table 58 (PIPZ10L)
	-	Table 54 (PIPZWE7M)	Table 63 (PIPZWE7L)

These tables indicate where chemical and pathogen threats are (or would be for future activities) significant, moderate, or low in the Intake Protection Zone. The table numbers and codes refer to the Provincial Table of Circumstances that list the circumstances under which these threats can be significant, moderate, or low. The Provincial Tables of Circumstances can be accessed from: the source protection homepage of ontario.ca or the reports and legislation page of <http://trentsourceprotection.on.ca>

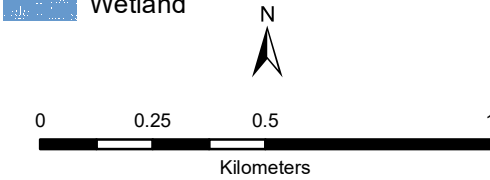


Marmora Municipal Surface Water System Crowe Valley Source Protection Area

Areas for Significant, Moderate, & Low Drinking Water Threats (Chemical & Pathogen Threats)

Legend

- Surface Water Intake
- Railway
- Watercourse
- Main Road
- Highway
- Multi Lane Highway
- Property Boundary
- Source Protection Region
- Source Protection Area
- Lower and Single Tier Municipality
- Upper Tier Municipality
- Waterbody
- Wetland



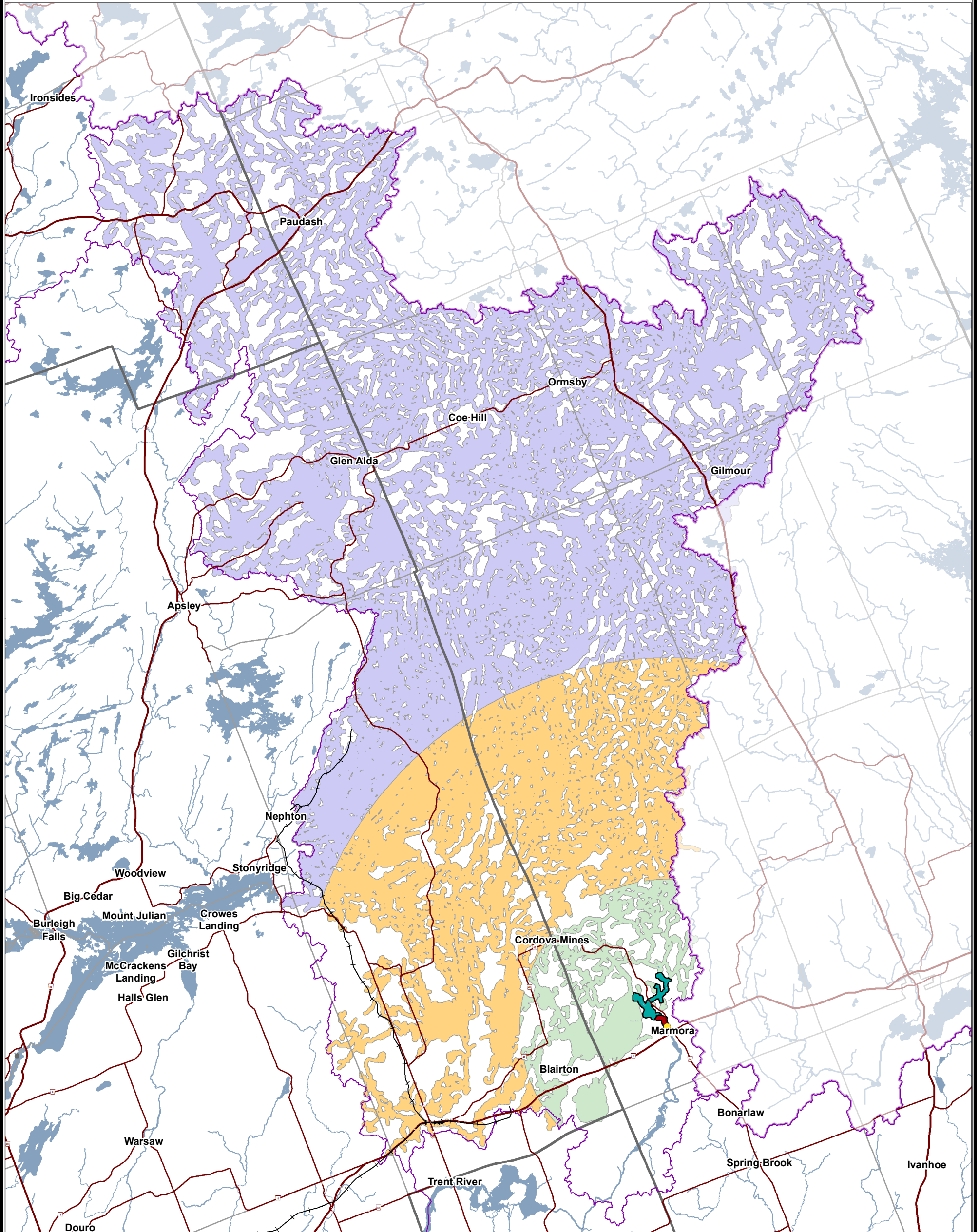
Trent Conservation Coalition Source Protection Region

www.trentsourceprotection.on.ca

This map has been prepared for the purpose of meeting the provincial requirements under the Clean Water Act, 2006. If it is proposed to use it for another purpose, it would be advisable to first consult with the responsible conservation authority.

PRODUCED BY Lower Trent Conservation on behalf of the Trent Conservation Coalition Source Protection Committee, March 2011 (Updated July 2016), with data supplied under licence by members of the Ontario Geospatial Data Exchange.





This map has been prepared for the purpose of meeting the provincial requirements under the Clean Water Act, 2006. If it is proposed to use it for another purpose, it would be advisable to first consult with the responsible conservation authority.

PRODUCED BY Lower Trent Conservation on behalf of the Trent Conservation Coalition Source Protection Committee, March 2011 (Updated July 2016), with data supplied under licence by members of the Ontario Geospatial Data Exchange.

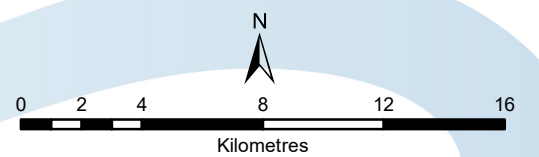
Waterbodies and watercourses located within the extent of an intake protection zone are included in that zone.

Legend

- Surface Water Intake
- Railway
- Watercourse
- Main Road
- Highway
- Multi Lane Highway
- Source Protection Region
- Source Protection Areas
- Upper and Single Tier Municipality
- Lower Tier Municipality
- Waterbody

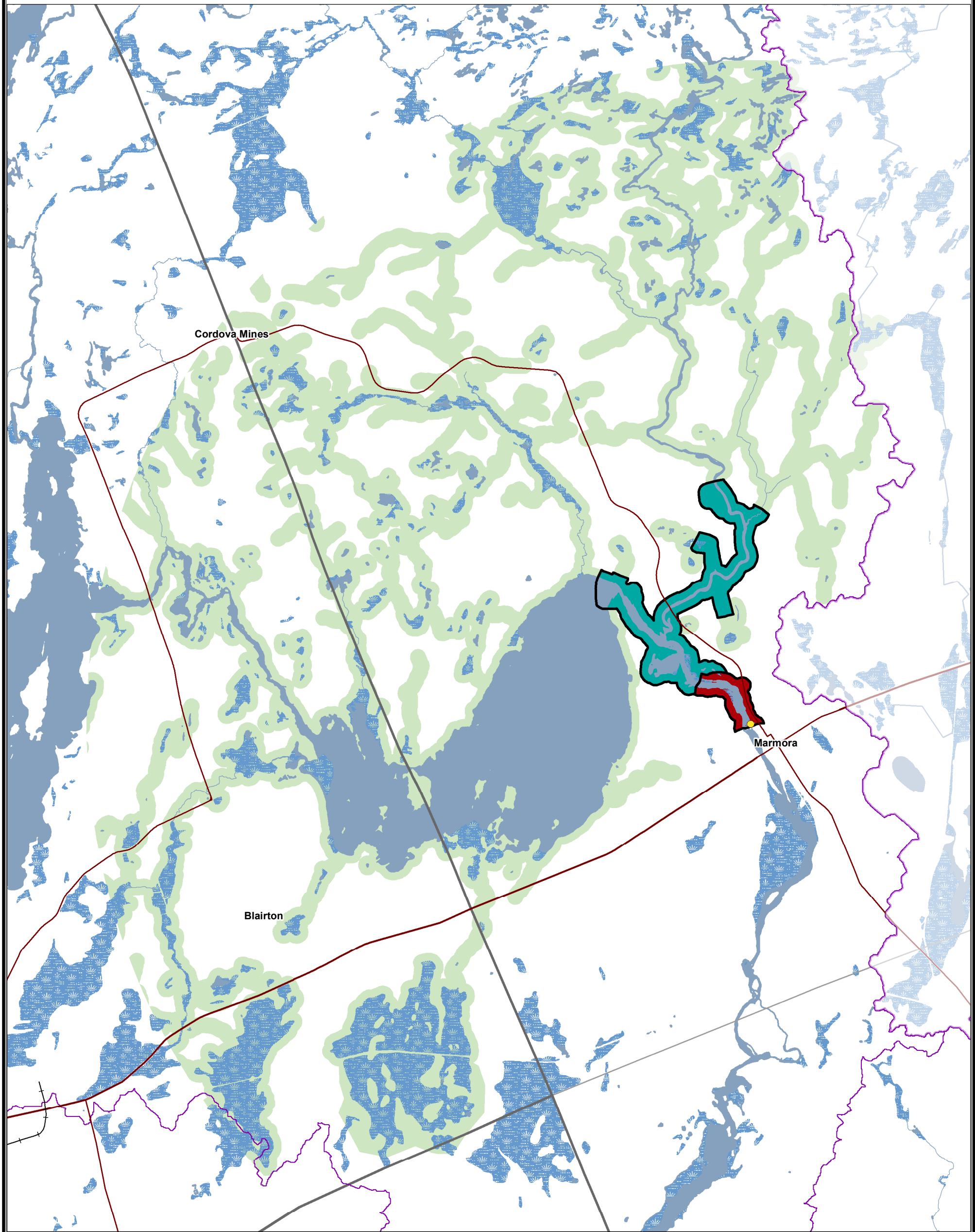
Intake Protection Zones

- IPZ-1
- IPZ-2
- IPZ-3a (Vulnerability Score = 5)
- IPZ-3b (Vulnerability Score = 4)
- IPZ-3c (Vulnerability Score = 3)



**Trent Conservation Coalition
Source Protection Region**

www.trentsourceprotection.on.ca

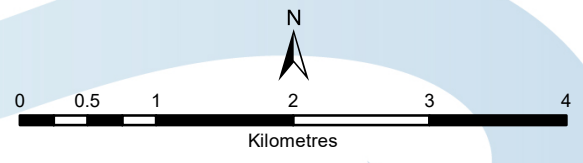


This map has been prepared for the purpose of meeting the provincial requirements under the Clean Water Act, 2006. If it is proposed to use it for another purpose, it would be advisable to first consult with the responsible conservation authority.

PRODUCED BY Lower Trent Conservation on behalf of the Trent Conservation Coalition Source Protection Committee, March 2011 (Updated July 2016), with data supplied under licence by members of the Ontario Geospatial Data Exchange.

- Legend**
- Surface Water Intake
 - Railway
 - Main Road
 - Highway
 - Multi Lane Highway
 - Source Protection Region
 - Source Protection Areas
 - Upper and Single Tier Municipality
 - Lower Tier Municipality
 - Waterbody
 - Wetland

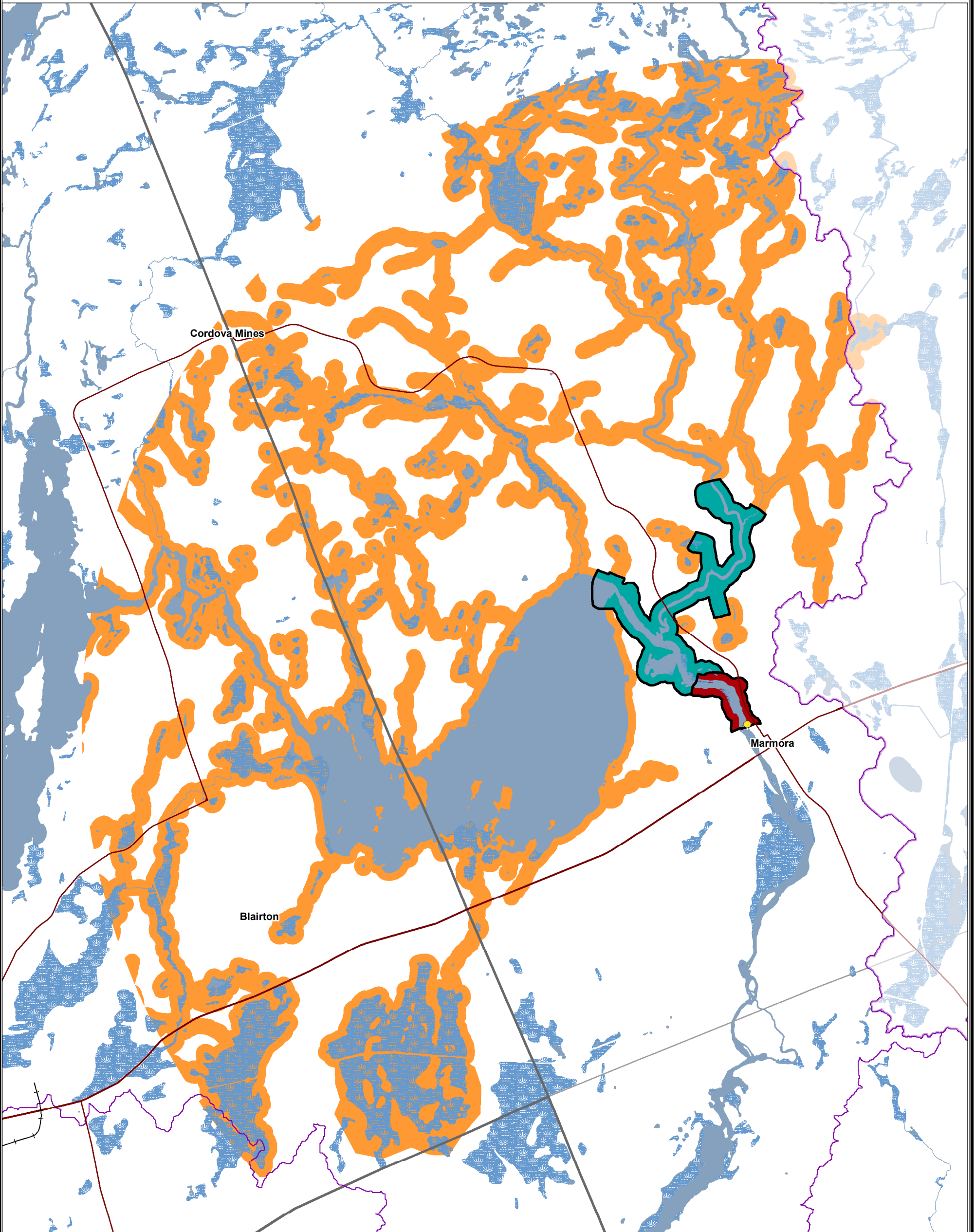
- Managed Lands**
- <40%
- Intake Protection Zones**
- IPZ-1
 - IPZ-2



Trent Conservation Coalition
Source Protection Region

www.trentsourceprotection.on.ca



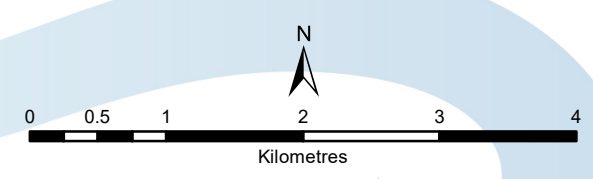


This map has been prepared for the purpose of meeting the provincial requirements under the Clean Water Act, 2006. If it is proposed to use it for another purpose, it would be advisable to first consult with the responsible conservation authority.

PRODUCED BY Lower Trent Conservation on behalf of the Trent Conservation Coalition Source Protection Committee, March 2011 (Updated July 2016), with data supplied under licence by members of the Ontario Geospatial Data Exchange.

- Legend**
- Surface Water Intake
 - Railway In Use
 - Watercourse
 - Main Road
 - Highway
 - Multi Lane Highway
 - Source Protection Region
 - Source Protection Areas
 - Upper Tier Municipality
 - Lower and Single Tier Municipality
 - Waterbody
 - Wetland

- Livestock Density**
- < 0.5 NU/acre
- Intake Protection Zones**
- IPZ-1
 - IPZ-2

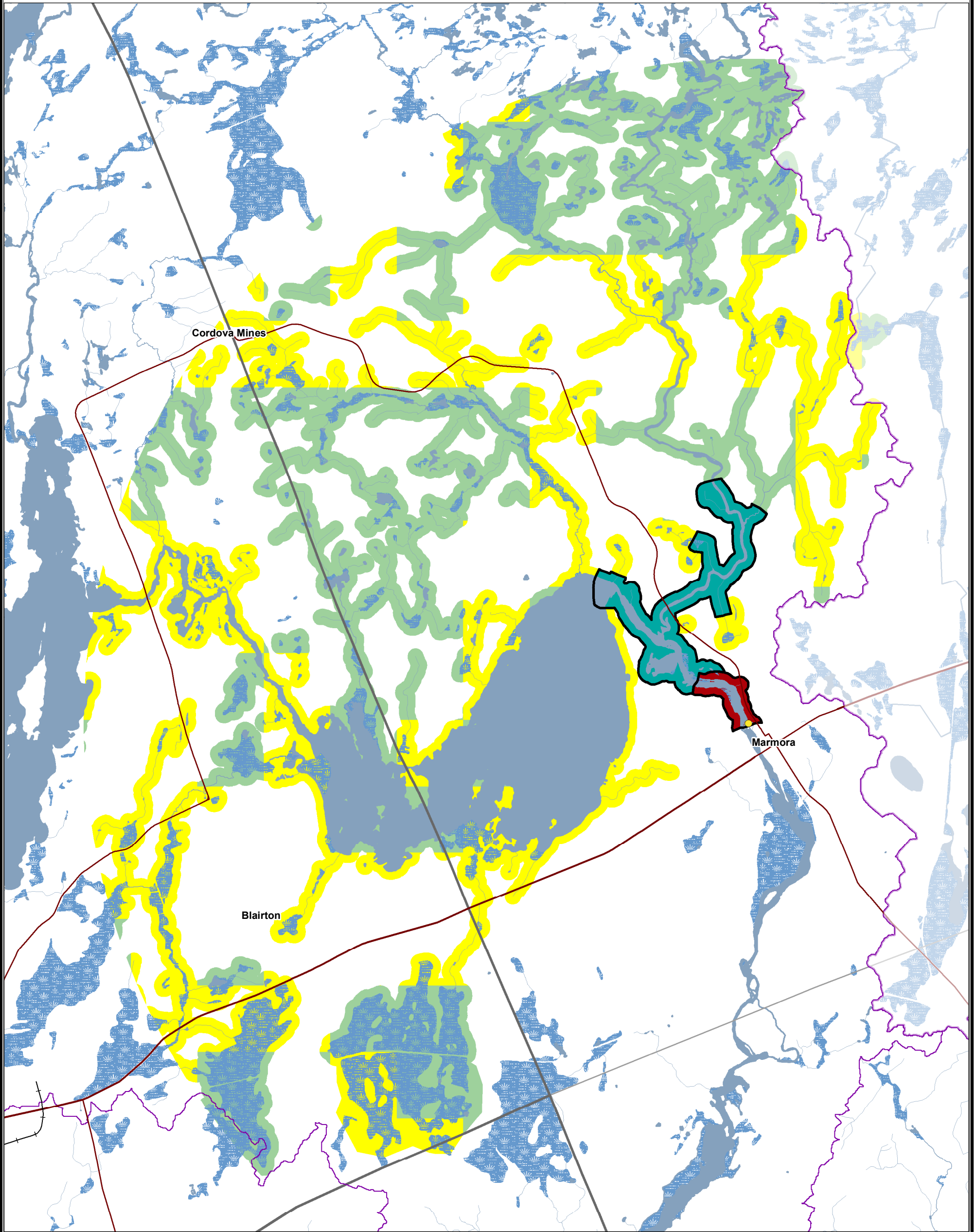


Trent Conservation Coalition
Source Protection Region

www.trentsourceprotection.on.ca



Trent Assessment Report Map 4-10f

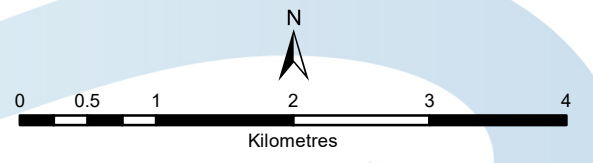


This map has been prepared for the purpose of meeting the provincial requirements under the Clean Water Act, 2006. If it is proposed to use it for another purpose, it would be advisable to first consult with the responsible conservation authority.

PRODUCED BY Lower Trent Conservation on behalf of the Trent Conservation Coalition Source Protection Committee, March 2011 (Updated July 2016), with data supplied under licence by members of the Ontario Geospatial Data Exchange.

- Legend**
- Surface Water Intake
 - Railway
 - Watercourse
 - Main Road
 - Highway
 - Multi Lane Highway
 - Source Protection Region
 - Source Protection Areas
 - Upper and Single Tier Municipality
 - Lower Tier Municipality
 - Waterbody
 - Wetland

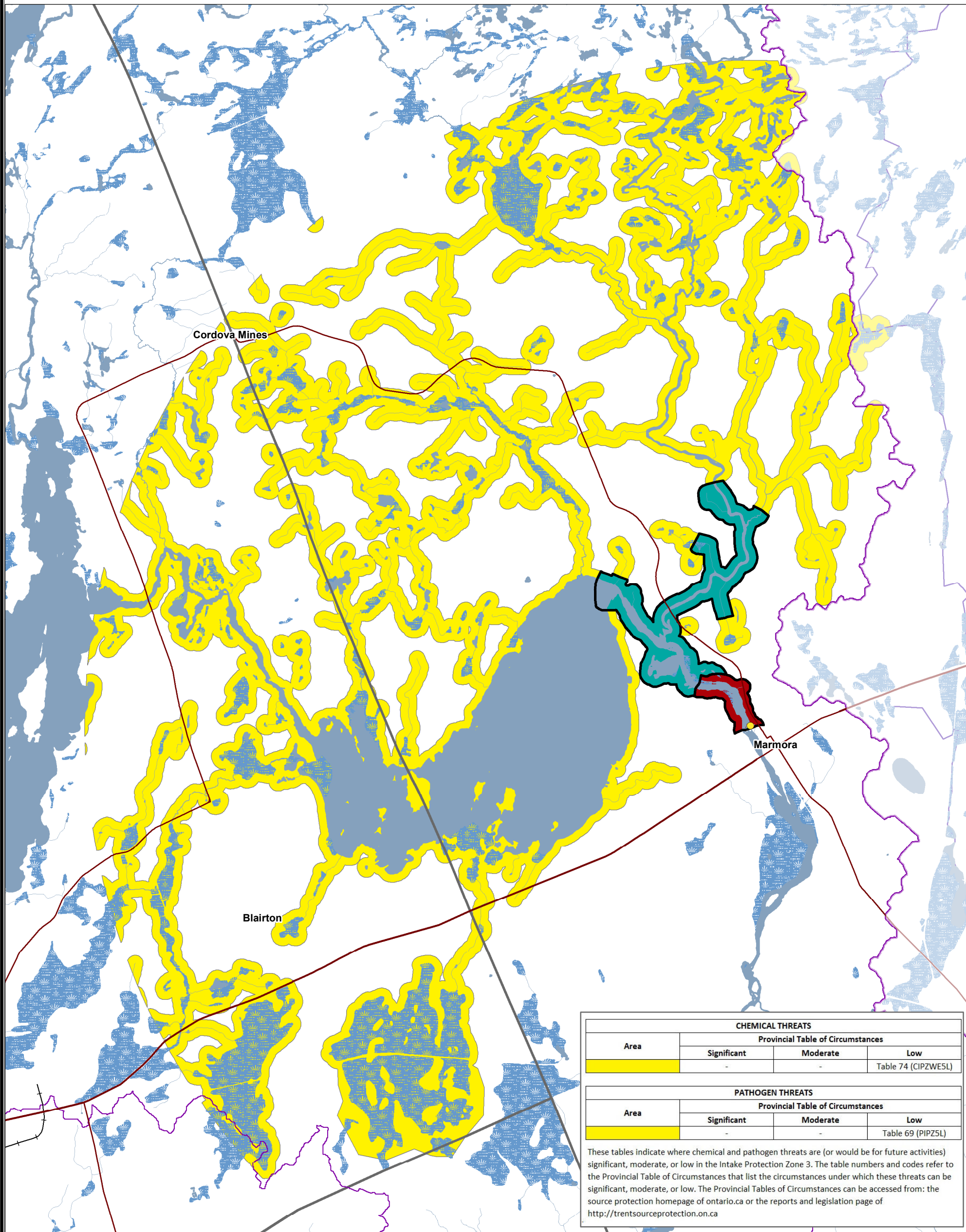
- Total Impervious Surface Area**
- <1%
 - >1% and <8%
- Intake Protection Zones**
- IPZ-1
 - IPZ-2



**Trent Conservation Coalition
Source Protection Region**

www.trentsourceprotection.on.ca





This map has been prepared for the purpose of meeting the provincial requirements under the Clean Water Act, 2006. If it is proposed to use it for another purpose, it would be advisable to first consult with the responsible conservation authority.

PRODUCED BY Lower Trent Conservation on behalf of the Trent Conservation Coalition Source Protection Committee, March 2011 (Updated July 2016), with data supplied under licence by members of the Ontario Geospatial Data Exchange.

- Legend**
- Surface Water Intake
 - Railway
 - Watercourse
 - Main Road
 - Highway
 - Multi Lane Highway
 - Upper and Single Tier Municipality
 - Lower Tier Municipality
 - Source Protection Region
 - Source Protection Areas
 - Waterbody
 - Wetland
- Intake Protection Zones**
- IPZ-1
 - IPZ-2
 - IPZ-3a

