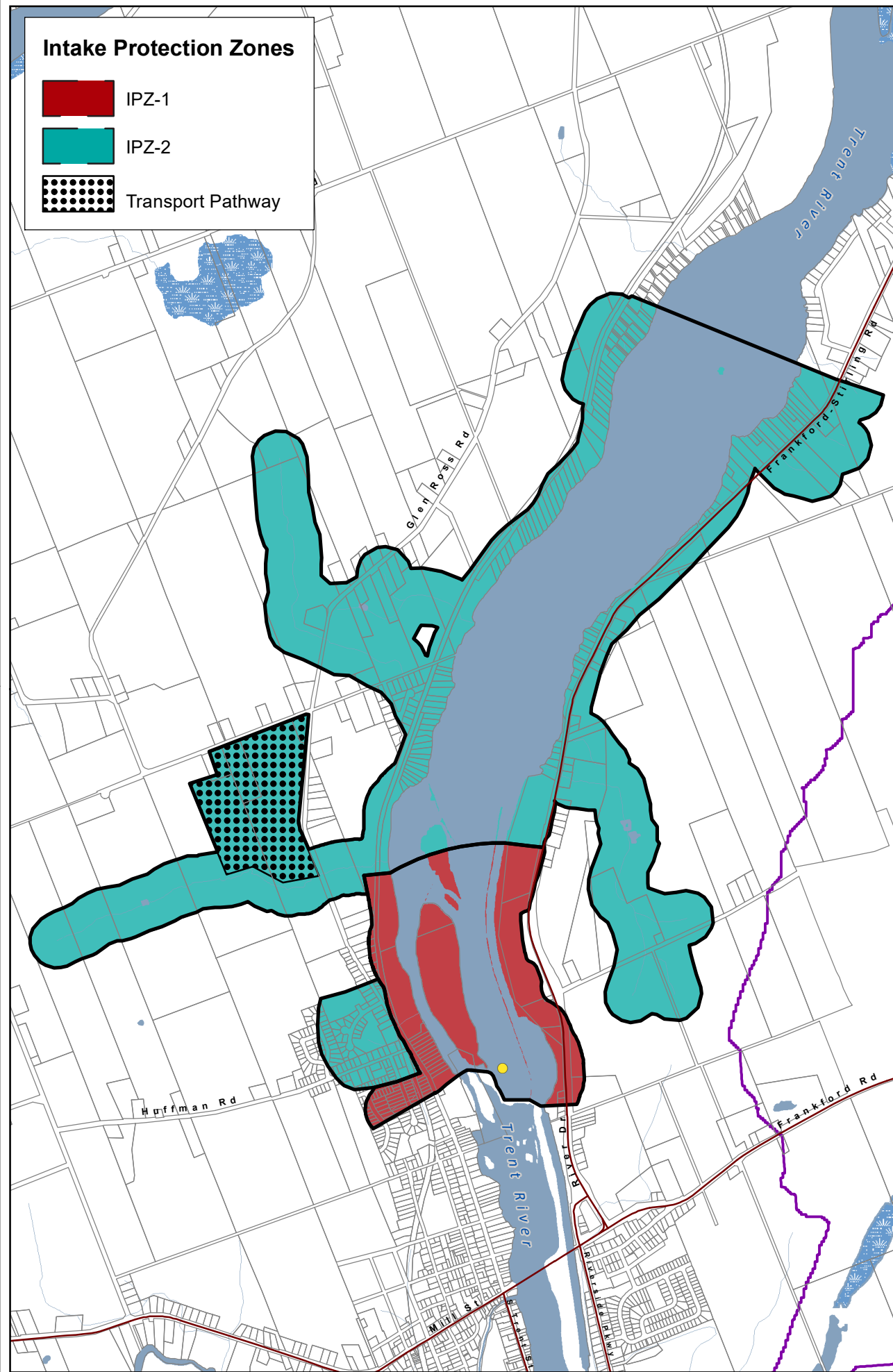
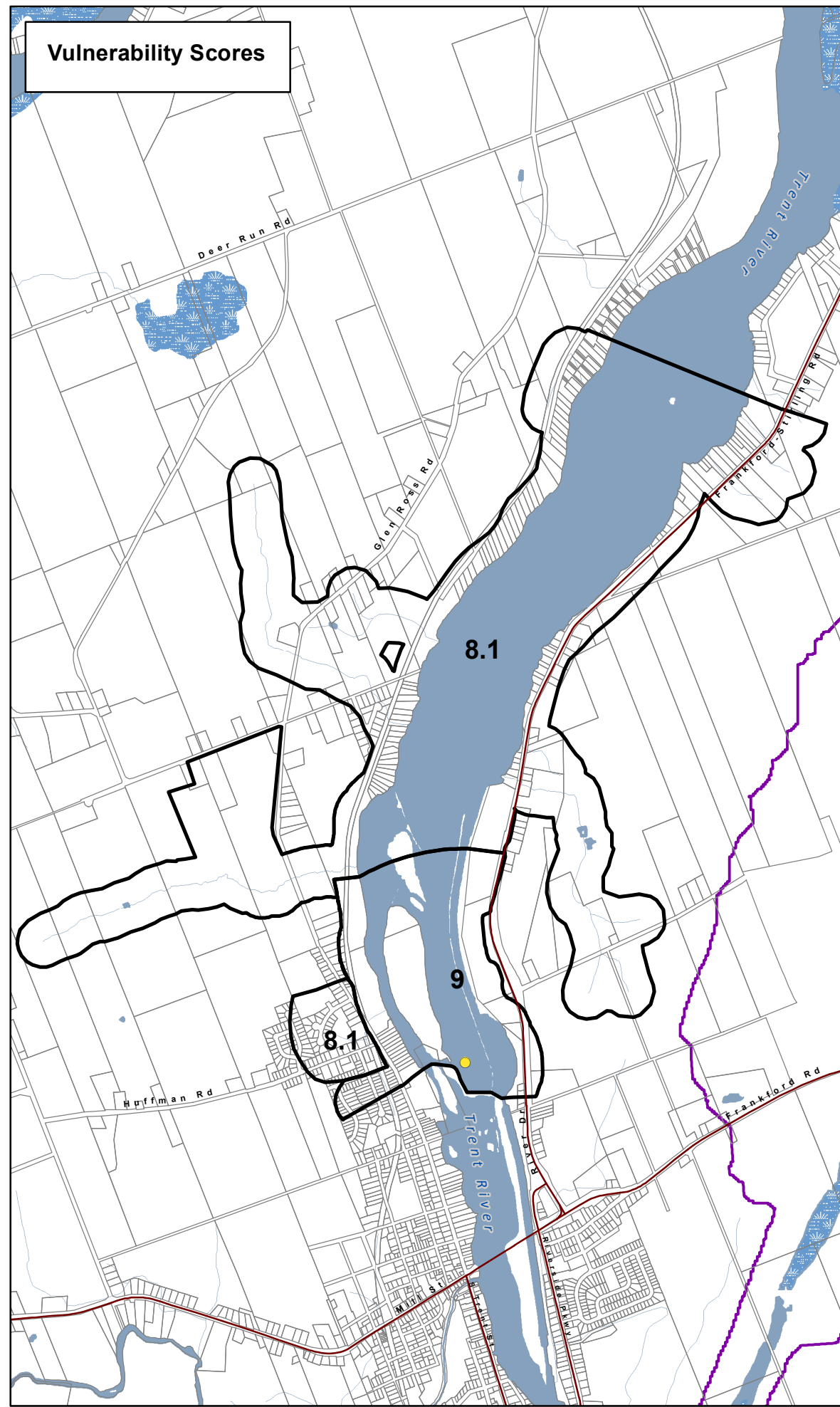


Intake Protection Zones

- IPZ-1
- IPZ-2
- Transport Pathway



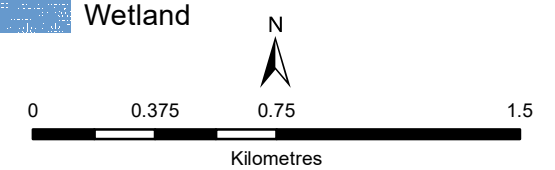
Vulnerability Scores



**Frankford
Municipal Surface
Water System
Lower Trent
Source Protection Area
Intake Protection Zones &
Vulnerability Scores
(IPZ 1 & 2)**

Legend

- Surface Water Intake
- Railway
- Watercourse
- Main Road
- Highway
- Multi Lane Highway
- Property Boundary
- Source Protection Region
- Source Protection Area
- Upper Tier Municipality
- Lower and Single Tier Municipality
- Waterbody
- Wetland



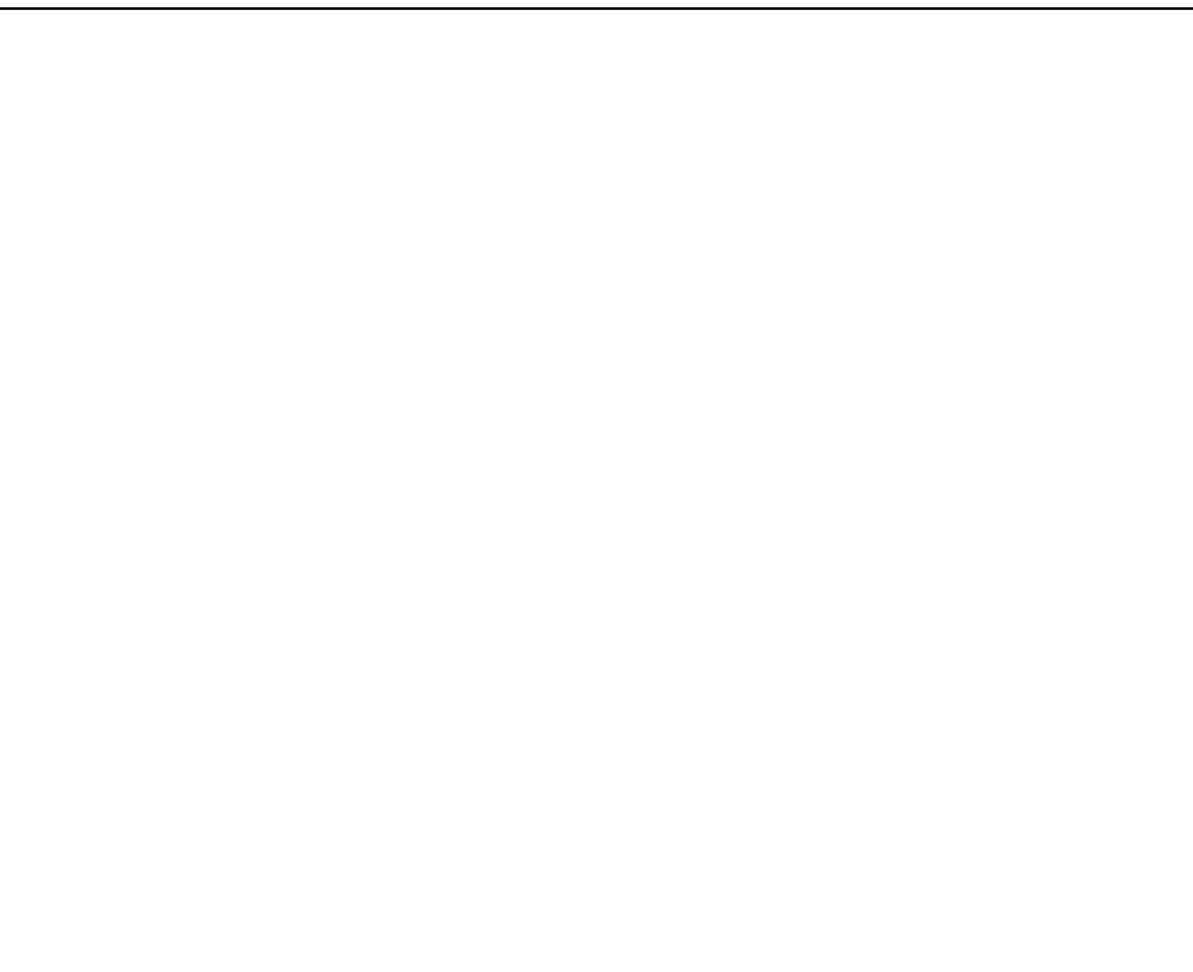
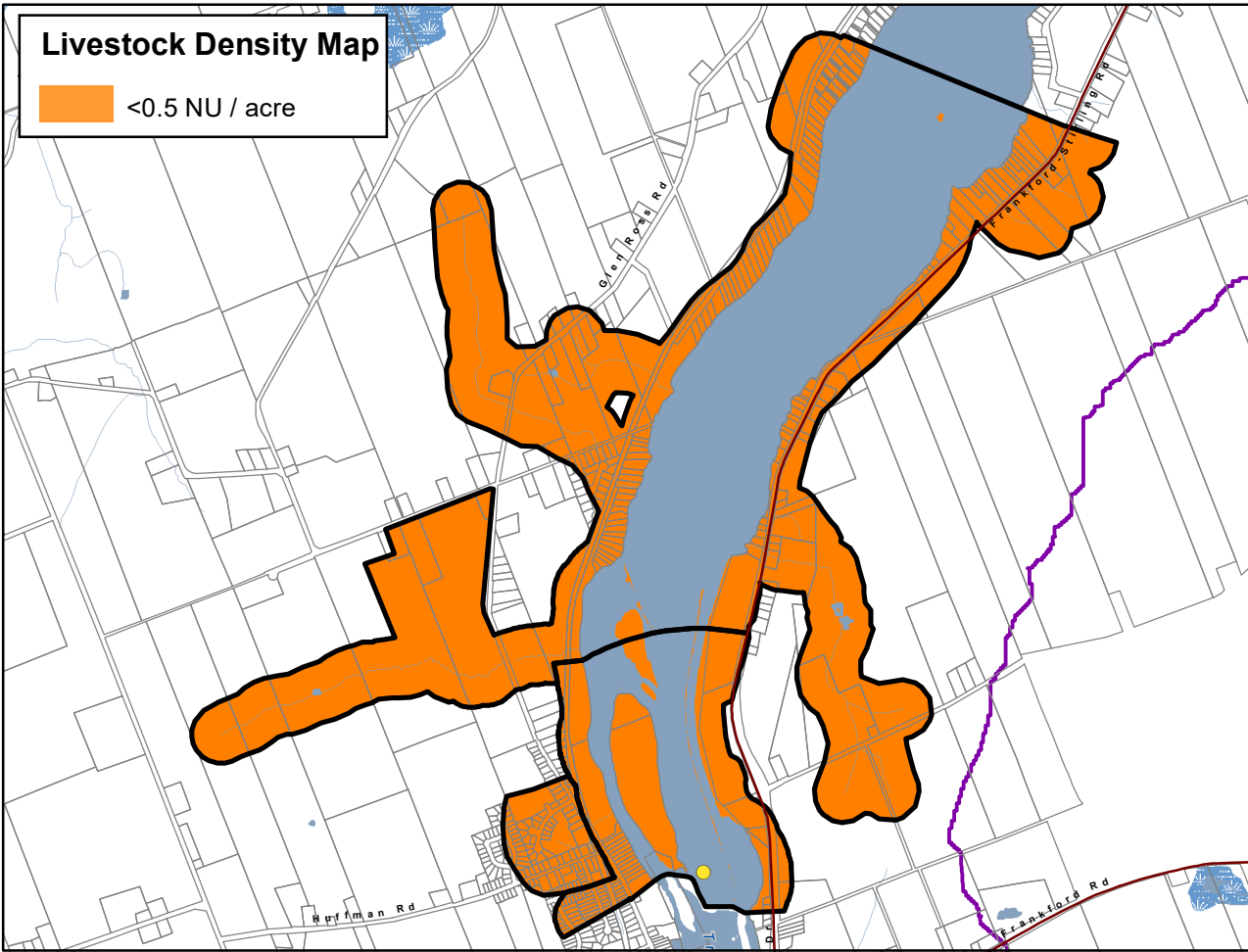
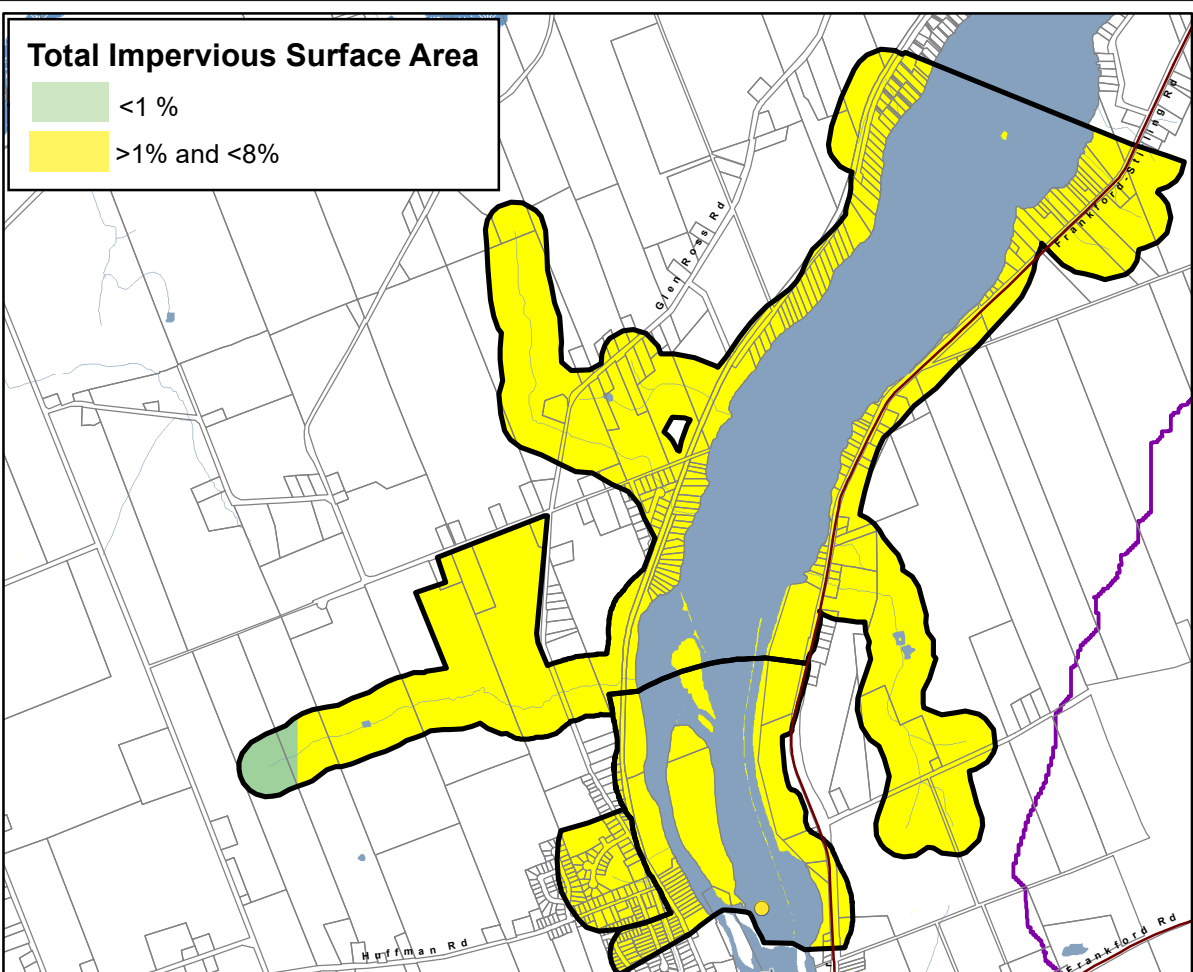
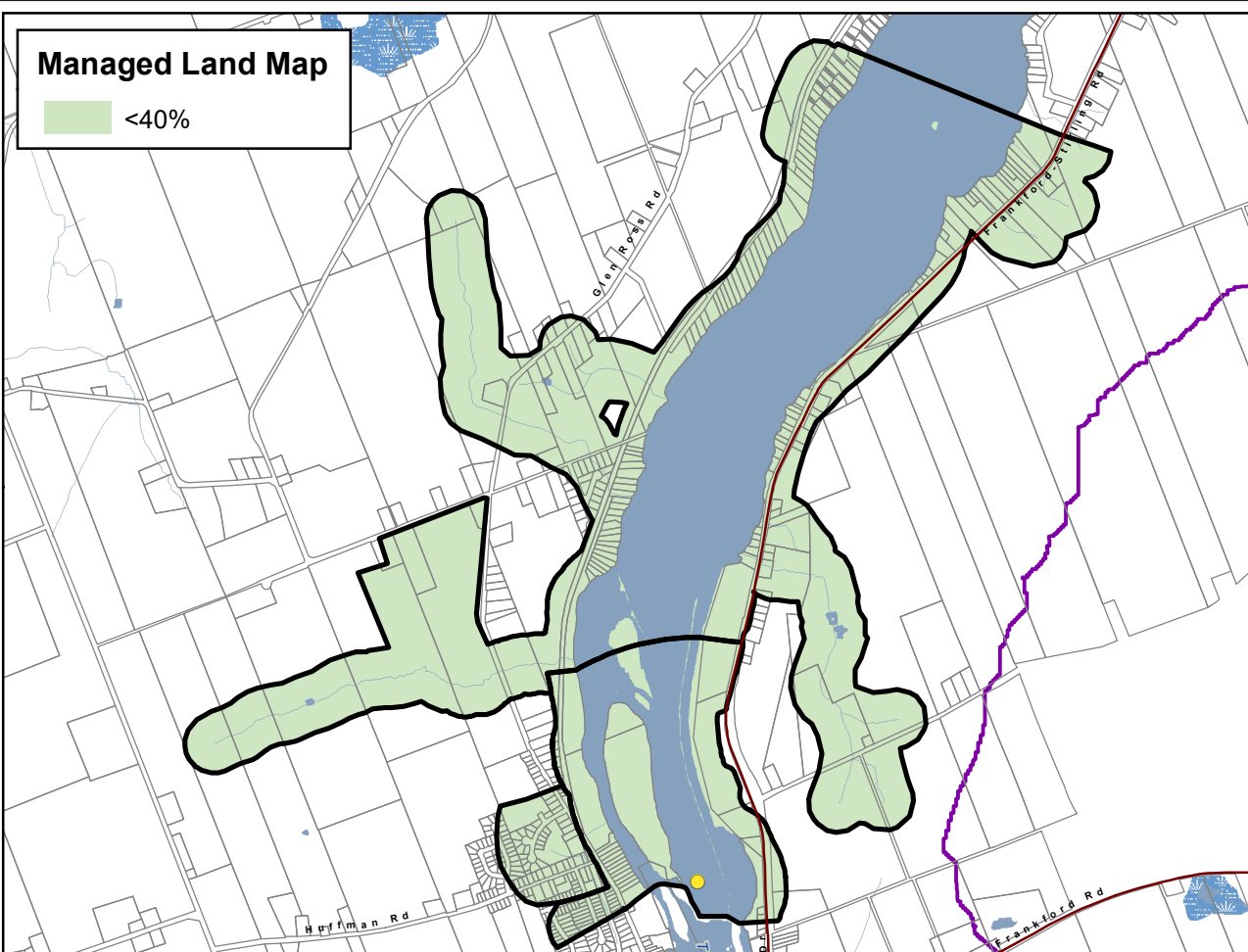
**Trent Conservation Coalition
Source Protection Region**
www.trentsourceprotection.on.ca

This map has been prepared for the purpose of meeting the provincial requirements under the Clean Water Act, 2006. If it is proposed to use it for another purpose, it would be advisable to first consult with the responsible conservation authority.

PRODUCED BY Lower Trent Conservation on behalf of the Trent Conservation Coalition Source Protection Committee, March 2011 (Updated July 2016), with data supplied under licence by members of the Ontario Geospatial Data Exchange.

Waterbodies and watercourses located within the extent of an intake protection zone are included in that zone.





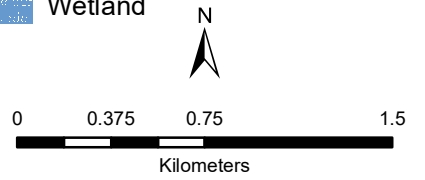
Frankford Municipal Surface Water System

Lower Trent Source Protection Area

Managed Land, Livestock Density & Total Impervious Surface Area

Legend

- Surface Water Intake
- Railway
- Watercourse
- Main Road
- Highway
- Multi Lane Highway
- Property Boundary
- Source Protection Region
- Source Protection Area
- Upper and Single Tier Municipality
- Lower Tier Municipality
- Waterbody
- Wetland



Trent Conservation Coalition Source Protection Region

www.trentsourceprotection.on.ca

This map has been prepared for the purpose of meeting the provincial requirements under the Clean Water Act, 2006. If it is proposed to use it for another purpose, it would be advisable to first consult with the responsible conservation authority.

PRODUCED BY Lower Trent Conservation on behalf of the Trent Conservation Coalition Source Protection Committee, March 2011 (Updated July 2016), with data supplied under licence by members of the Ontario Geospatial Data Exchange.

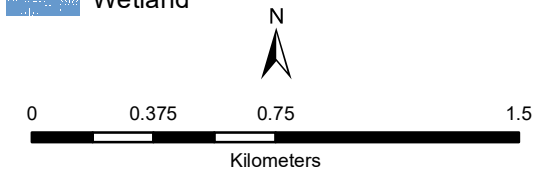


**Frankford Municipal Surface Water System
Lower Trent Source Protection Area**

Areas for Significant, Moderate, & Low Drinking Water Threats (Chemical & Pathogen Threats)

Legend

- Surface Water Intake
- Railway
- Watercourse
- Main Road
- Highway
- Multi Lane Highway
- Property Boundary
- Source Protection Region
- Source Protection Area
- Upper and Single Tier Municipality
- Lower Tier Municipality
- Waterbody
- Wetland

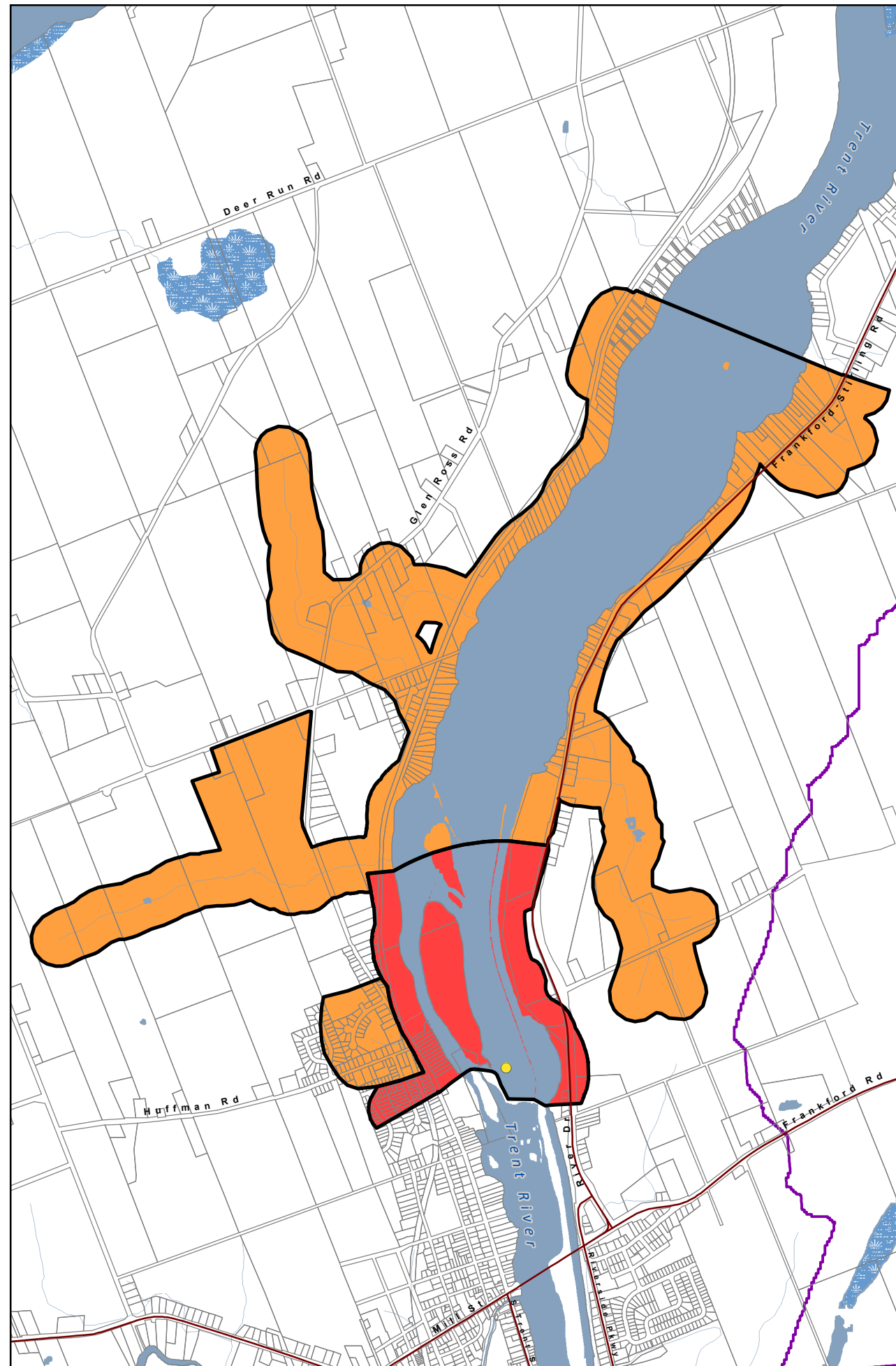


Trent Conservation Coalition Source Protection Region

www.trentsourceprotection.on.ca

This map has been prepared for the purpose of meeting the provincial requirements under the Clean Water Act, 2006. If it is proposed to use it for another purpose, it would be advisable to first consult with the responsible conservation authority.

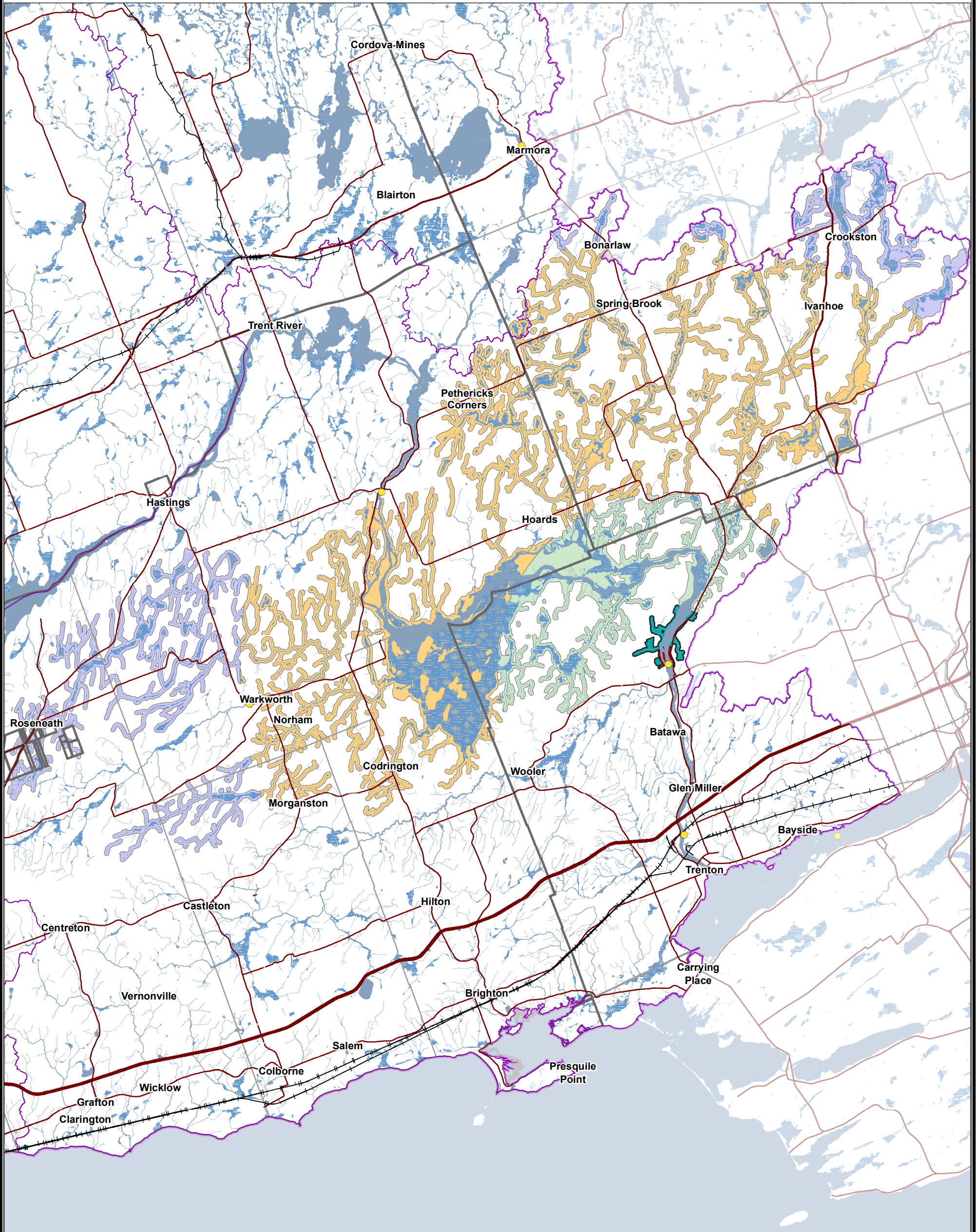
PRODUCED BY Lower Trent Conservation on behalf of the Trent Conservation Coalition Source Protection Committee, March 2011 (Updated July 2016), with data supplied under licence by members of the Ontario Geospatial Data Exchange.



CHEMICAL THREATS			
Area	Provincial Table of Circumstances		
	Significant	Moderate	Low
	Table 20 (CIPZWE9S)	Table 24 (CIPZWE9M)	Table 32 (CIPZWE9L)
	Table 21 (CIPZWE8.1S)	Table 25 (CIPZWE8.1M)	Table 33 (CIPZWE8.1L)

PATHOGEN THREATS			
Vulnerability Zone	Provincial Table of Circumstances		
	Significant	Moderate	Low
	Table 46 (PIPZWE9S)	Table 50 (PIPZWE9M)	Table 59 (PIPZWE9L)
	Table 47 (PIPZWE8.1S)	Table 51 (PIPZWE8.1M)	Table 60 (PIPZWE8.1L)

These tables indicate where chemical and pathogen threats are (or would be for future activities) significant, moderate, or low in the Intake Protection Zone. The table numbers and codes refer to the Provincial Table of Circumstances that list the circumstances under which these threats can be significant, moderate, or low. The Provincial Tables of Circumstances can be accessed from: the source protection homepage of ontario.ca or the reports and legislation page of <http://trentsourceprotection.on.ca>



This map has been prepared for the purpose of meeting the provincial requirements under the Clean Water Act, 2006. If it is proposed to use it for another purpose, it would be advisable to first consult with the responsible conservation authority.

PRODUCED BY Lower Trent Conservation on behalf of the Trent Conservation Coalition Source Protection Committee, March 2011 (Updated July 2016), with data supplied under licence by members of the Ontario Geospatial Data Exchange.

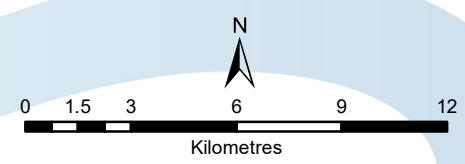
Waterbodies and watercourses located within the extent of an intake protection zone are included in that zone.

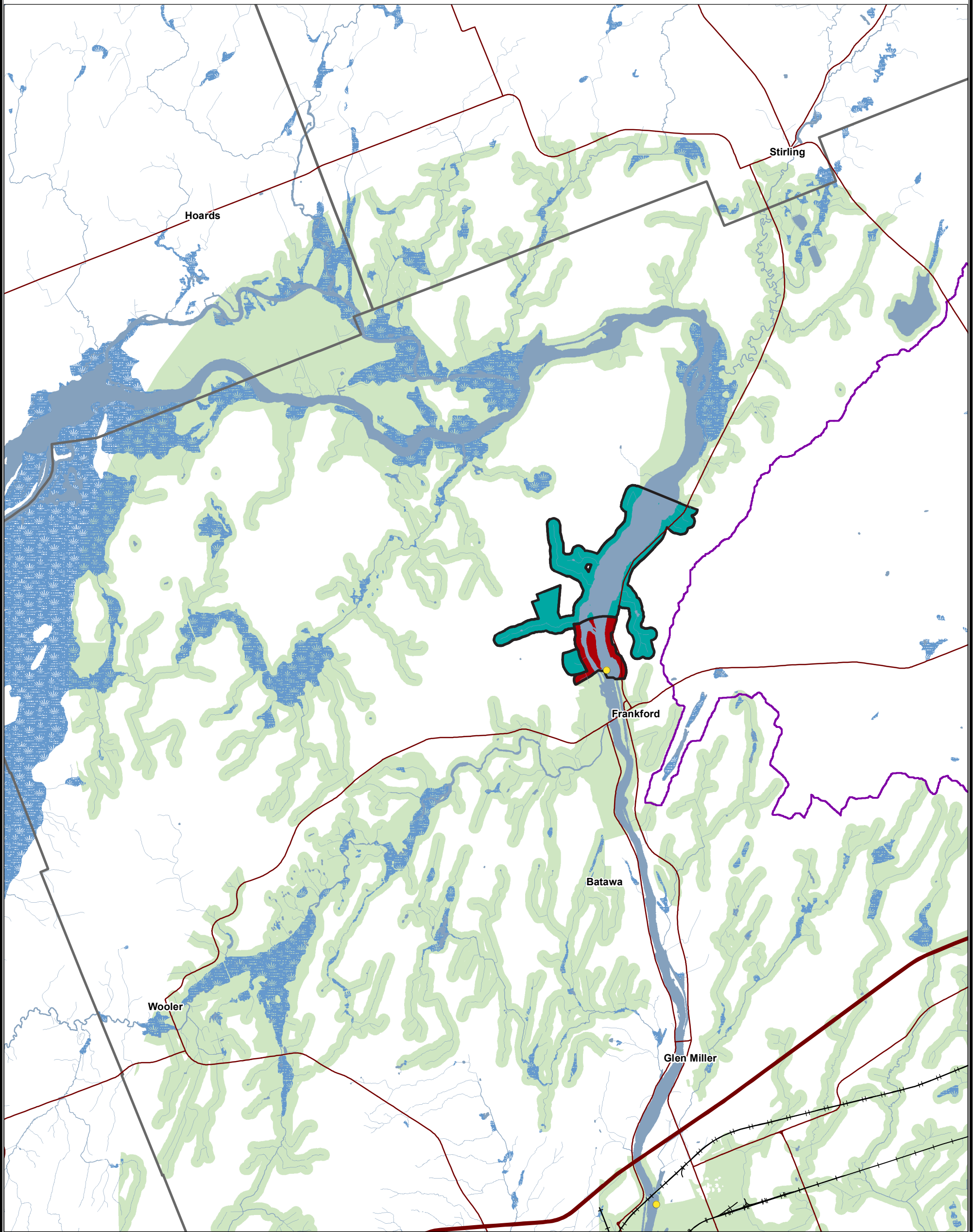
Legend

- Surface Water Intake
- Railway
- Watercourse
- Main Road
- Highway
- Multi Lane Highway
- Source Protection Region
- Source Protection Areas
- Upper and Single Tier Municipality
- Lower Tier Municipality
- Waterbody
- Wetland

Intake Protection Zones

- IPZ-1
- IPZ-2
- IPZ-3a (Vulnerability Score = 5.4)
- IPZ-3b (Vulnerability Score = 2.7)
- IPZ-3c (Vulnerability Score = 1.8)

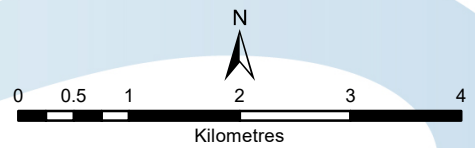


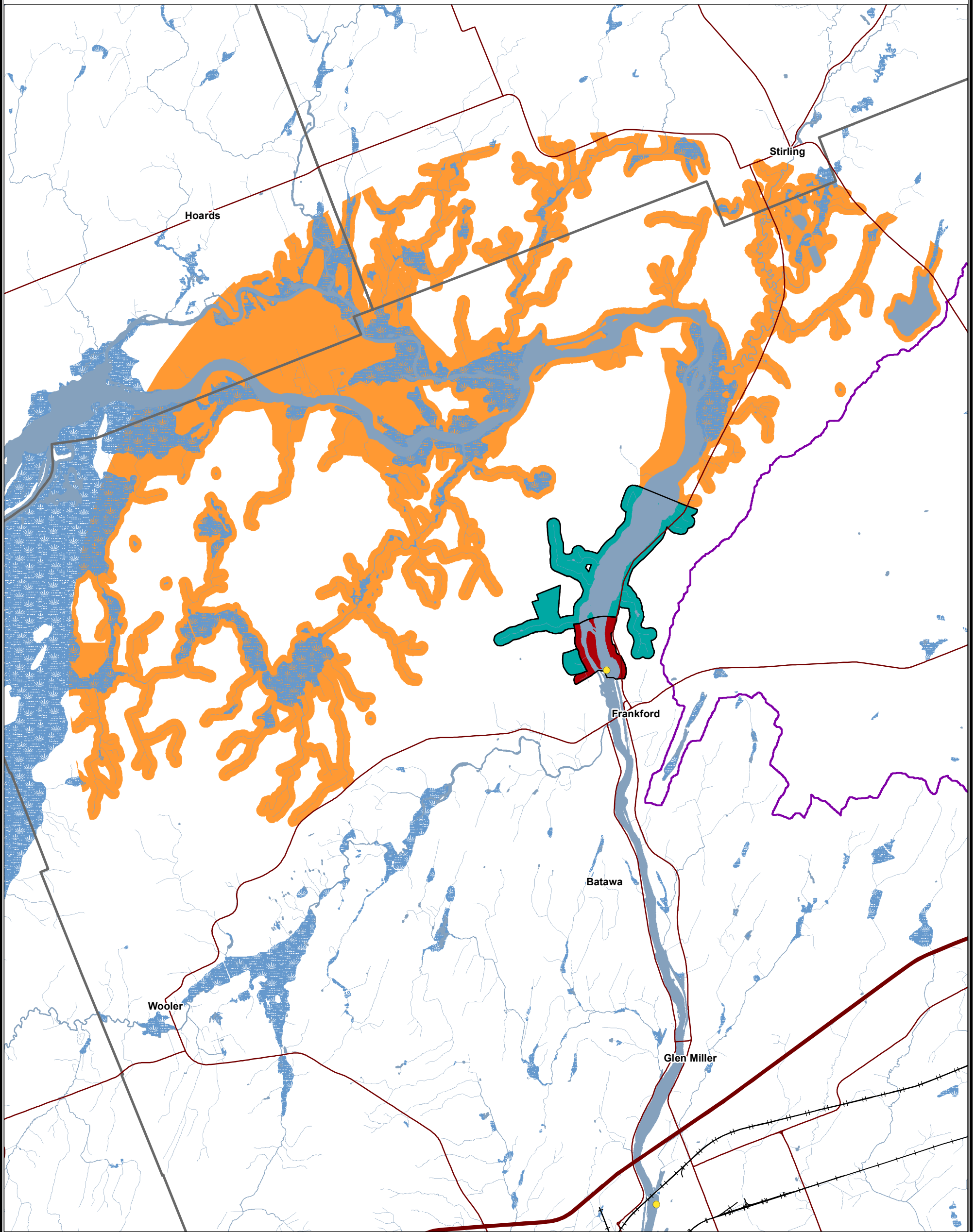


This map has been prepared for the purpose of meeting the provincial requirements under the Clean Water Act, 2006. If it is proposed to use it for another purpose, it would be advisable to first consult with the responsible conservation authority.

PRODUCED BY Lower Trent Conservation on behalf of the Trent Conservation Coalition Source Protection Committee, March 2011 (Updated July 2016), with data supplied under licence by members of the Ontario Geospatial Data Exchange.

- Legend**
- Surface Water Intake
 - Railway
 - Watercourse
 - Main Road
 - Highway
 - Multi Lane Highway
 - Source Protection Region
 - Source Protection Areas
 - Upper and Single Tier Municipality
 - Lower Tier Municipality
 - Waterbody
 - Wetland
- Managed Lands**
- <40%
- Intake Protection Zones**
- IPZ-1
 - IPZ-2

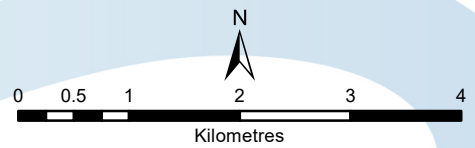




This map has been prepared for the purpose of meeting the provincial requirements under the Clean Water Act, 2006. If it is proposed to use it for another purpose, it would be advisable to first consult with the responsible conservation authority.

PRODUCED BY Lower Trent Conservation on behalf of the Trent Conservation Coalition Source Protection Committee, March 2011 (Updated July 2016), with data supplied under licence by members of the Ontario Geospatial Data Exchange.

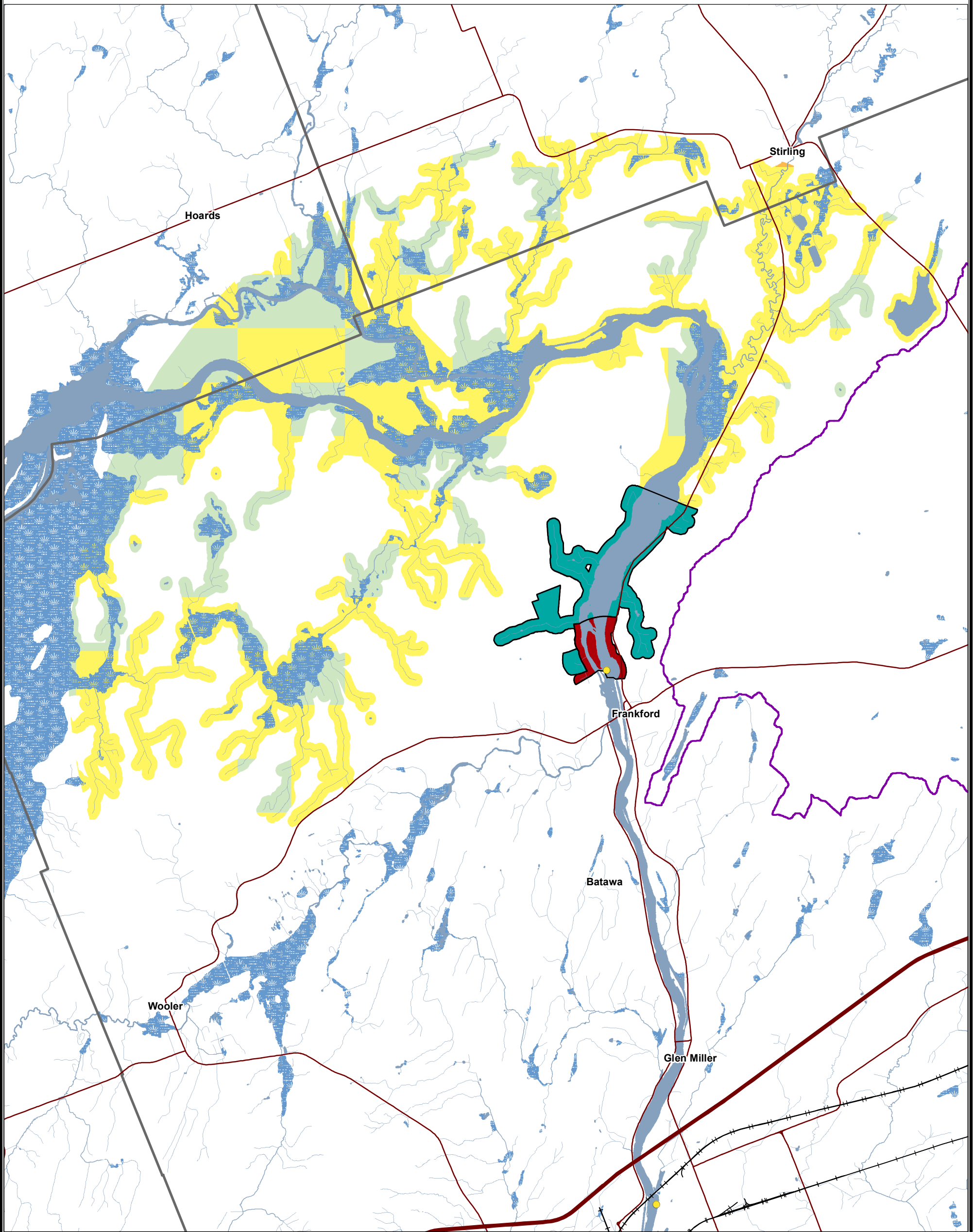
- Legend**
- Surface Water Intake
 - Railway
 - Watercourse
 - Main Road
 - Highway
 - Multi Lane Highway
 - Source Protection Region
 - Source Protection Areas
 - Upper and Single Tier Municipality
 - Lower Tier Municipality
 - Waterbody
 - Wetland
- Livestock Density**
- <0.5 NU/acre
- Intake Protection Zones**
- IPZ-1
 - IPZ-2



Trent Conservation Coalition
Source Protection Region

www.trentsourceprotection.on.ca

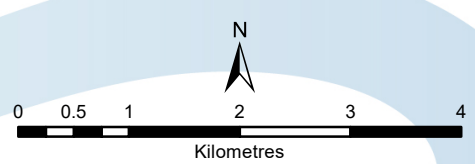


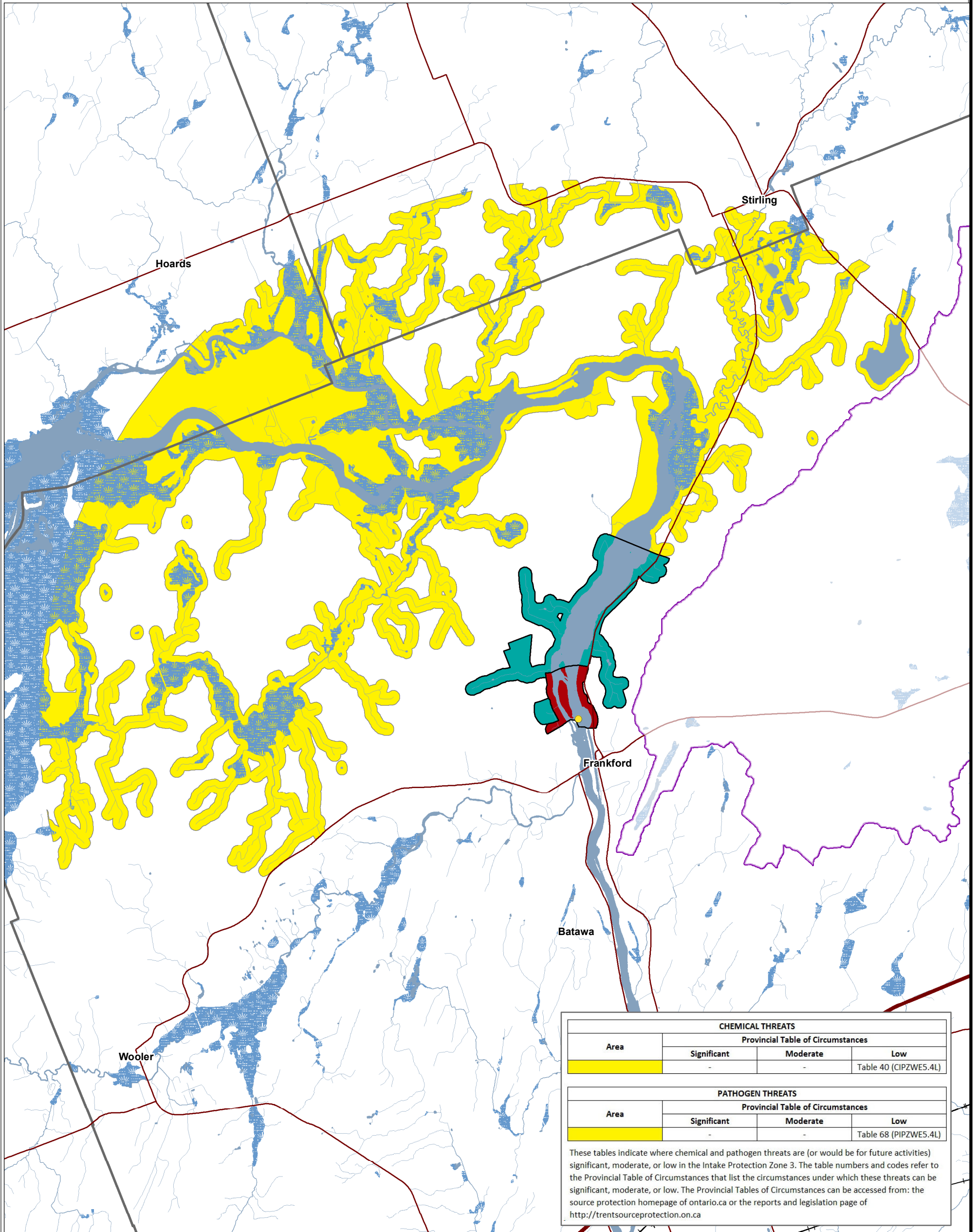


This map has been prepared for the purpose of meeting the provincial requirements under the Clean Water Act, 2006. If it is proposed to use it for another purpose, it would be advisable to first consult with the responsible conservation authority.

PRODUCED BY Lower Trent Conservation on behalf of the Trent Conservation Coalition Source Protection Committee, March 2011 (Updated July 2016), with data supplied under licence by members of the Ontario Geospatial Data Exchange.

- Legend**
- Surface Water Intake
 - Railway
 - Watercourse
 - Main Road
 - Highway
 - Multi Lane Highway
 - Source Protection Region
 - Source Protection Areas
 - Upper and Single Tier Municipality
 - Lower Tier Municipality
 - Waterbody
 - Wetland
- Impervious Surface Area**
- <1%
 - >1% and <8%
 - >8% and <80%
- Intake Protection Zones**
- IPZ-1
 - IPZ-2





CHEMICAL THREATS			
Area	Provincial Table of Circumstances		
	Significant	Moderate	Low
IPZ-3a	-	-	Table 40 (CIPZWE5.4L)

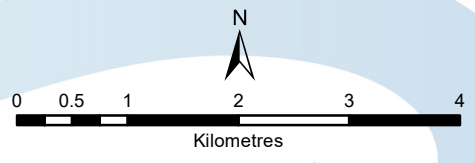
PATHOGEN THREATS			
Area	Provincial Table of Circumstances		
	Significant	Moderate	Low
IPZ-3a	-	-	Table 68 (PIPZWE5.4L)

These tables indicate where chemical and pathogen threats are (or would be for future activities) significant, moderate, or low in the Intake Protection Zone 3. The table numbers and codes refer to the Provincial Table of Circumstances that list the circumstances under which these threats can be significant, moderate, or low. The Provincial Tables of Circumstances can be accessed from: the source protection homepage of ontario.ca or the reports and legislation page of <http://trentsourceprotection.on.ca>

This map has been prepared for the purpose of meeting the provincial requirements under the Clean Water Act, 2006. If it is proposed to use it for another purpose, it would be advisable to first consult with the responsible conservation authority.

PRODUCED BY Lower Trent Conservation on behalf of the Trent Conservation Coalition Source Protection Committee, March 2011 (Updated July 2016), with data supplied under licence by members of the Ontario Geospatial Data Exchange.

- Legend**
- Surface Water Intake
 - Railway
 - Watercourse
 - Main Road
 - Highway
 - Multi Lane Highway
 - Source Protection Region
 - Source Protection Areas
 - Upper and Single Tier Municipality
 - Lower Tier Municipality
 - Waterbody
 - Wetland
- Intake Protection Zones**
- IPZ-1
 - IPZ-2
 - IPZ-3a



Trent Conservation Coalition Source Protection Region

www.trentsourceprotection.on.ca

