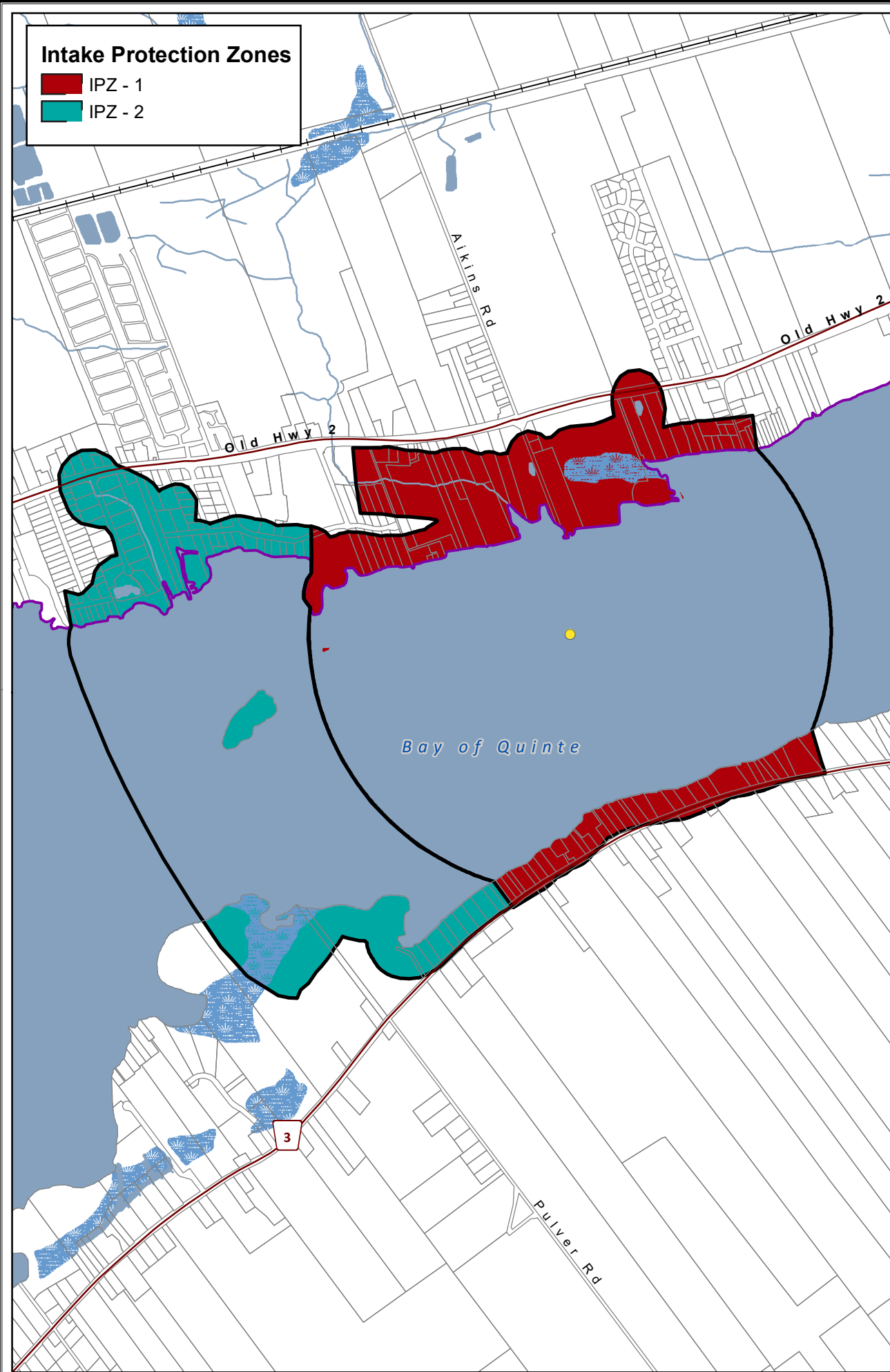
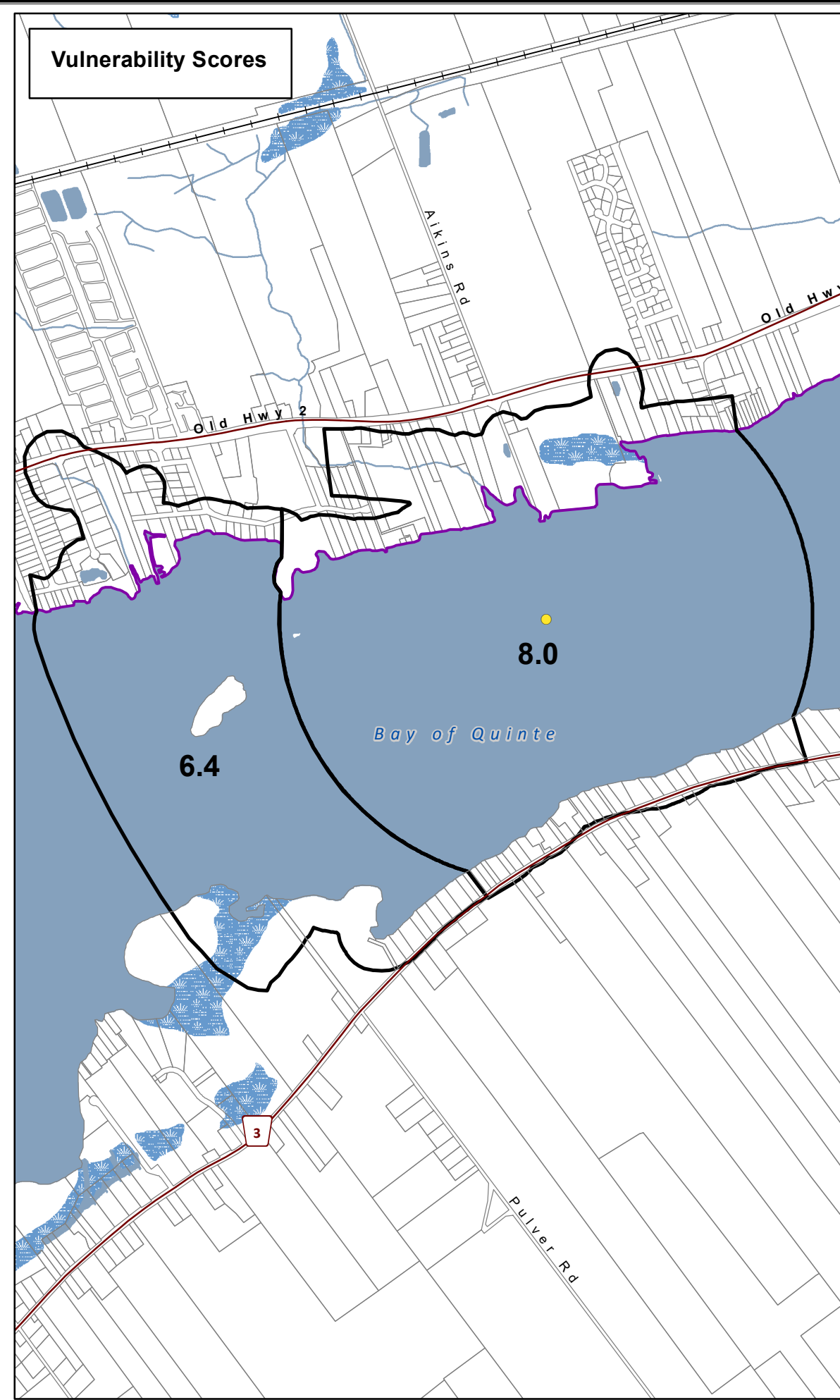


**Intake Protection Zones**

- IPZ - 1
- IPZ - 2



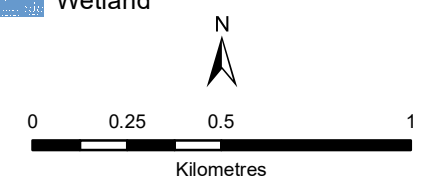
**Vulnerability Scores**



**Bayside Municipal Surface Water System**  
**Lower Trent Source Protection Area**  
**Intake Protection Zones & Vulnerability Scores (IPZ 1 & 2)**

**Legend**

- Surface Water Intake
- Railway
- Watercourse
- Main Road
- Highway
- Multi Lane Highway
- Property Boundary
- Source Protection Region
- Source Protection Area
- Upper and Single Tier Municipality
- Lower Tier Municipality
- Waterbody
- Wetland



**Trent Conservation Coalition Source Protection Region**  
[www.trentsourceprotection.on.ca](http://www.trentsourceprotection.on.ca)

This map has been prepared for the purpose of meeting the provincial requirements under the Clean Water Act, 2006. If it is proposed to use it for another purpose, it would be advisable to first consult with the responsible conservation authority.

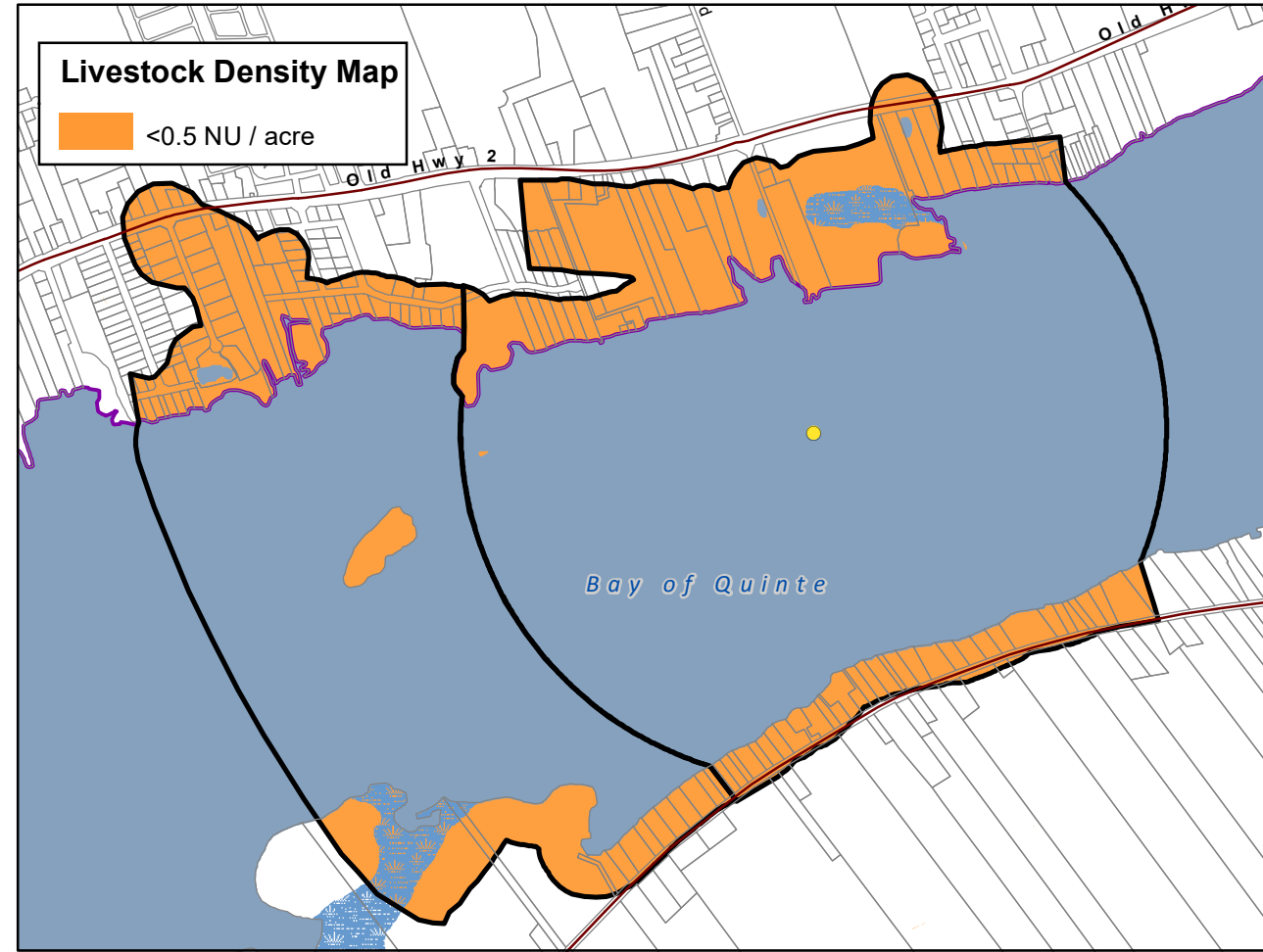
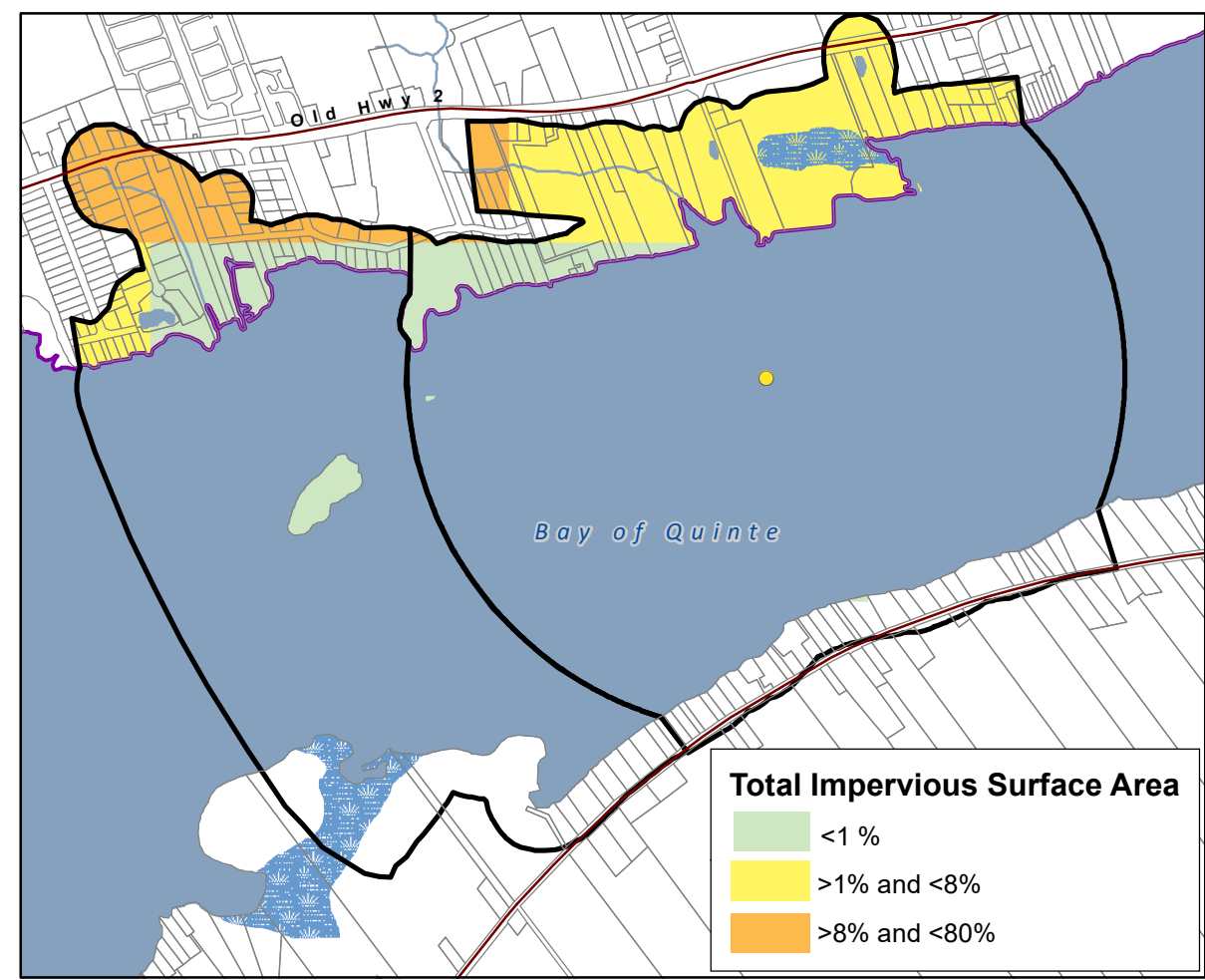
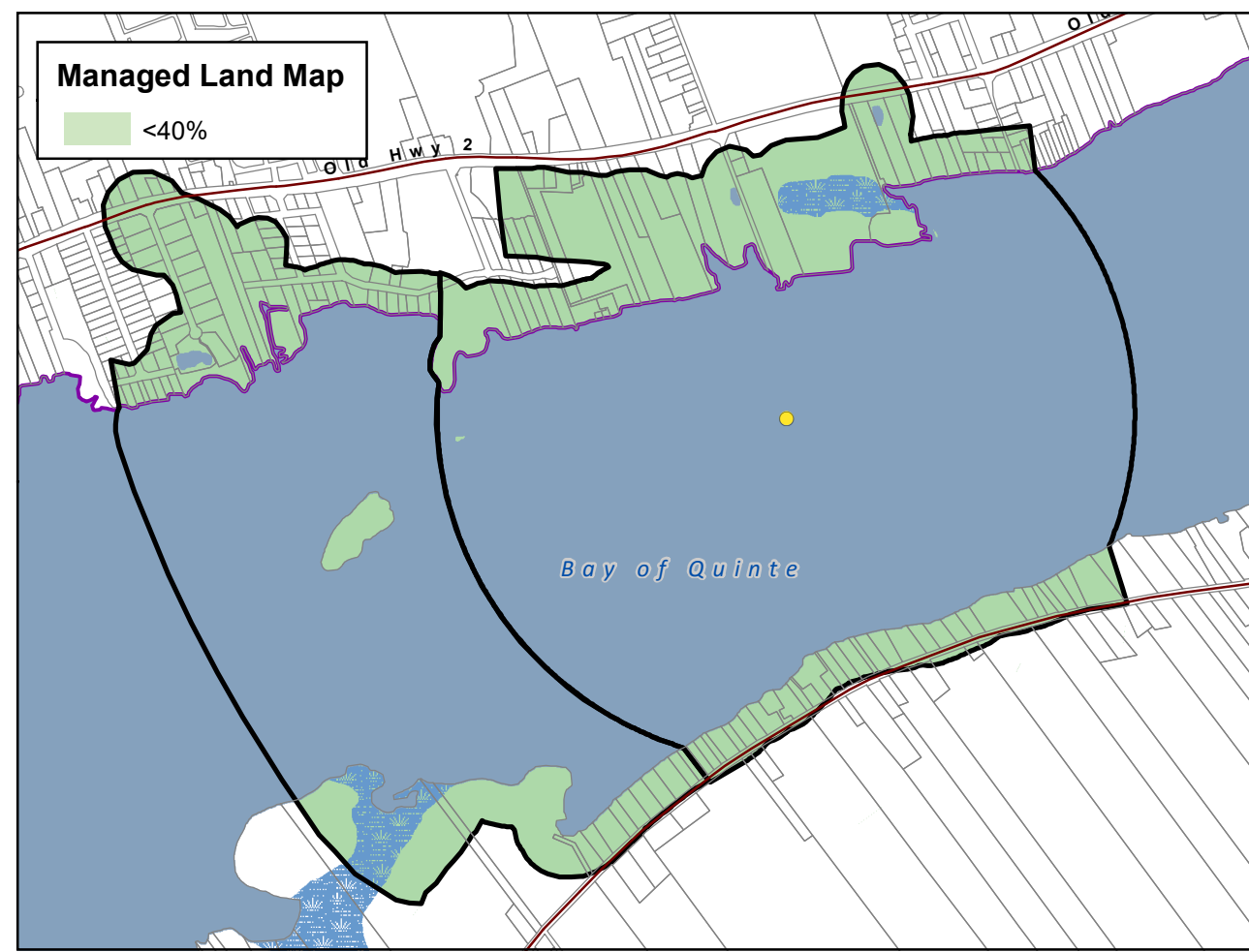
PRODUCED BY Lower Trent Conservation on behalf of the Trent Conservation Coalition Source Protection Committee, April 2010 (Updated July 2016), with data supplied under licence by members of the Ontario Geospatial Data Exchange.

Waterbodies and watercourses located within the extent of an intake protection zone are included in that zone.



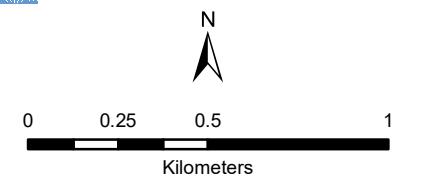
**Bayside Municipal Surface Water System  
Lower Trent Source Protection Area**

**Managed Land, Livestock Density & Total Impervious Surface Area**



**Legend**

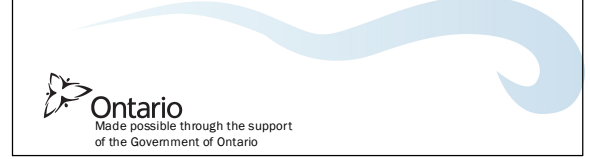
- Surface Water Intake
- Railway
- Watercourse
- Main Road
- Highway
- Multi Lane Highway
- Property Boundary
- Source Protection Region
- Source Protection Area
- Upper and Single Tier Municipality
- Lower Tier Municipality
- Intake Protection Zones
- Waterbody
- Wetland

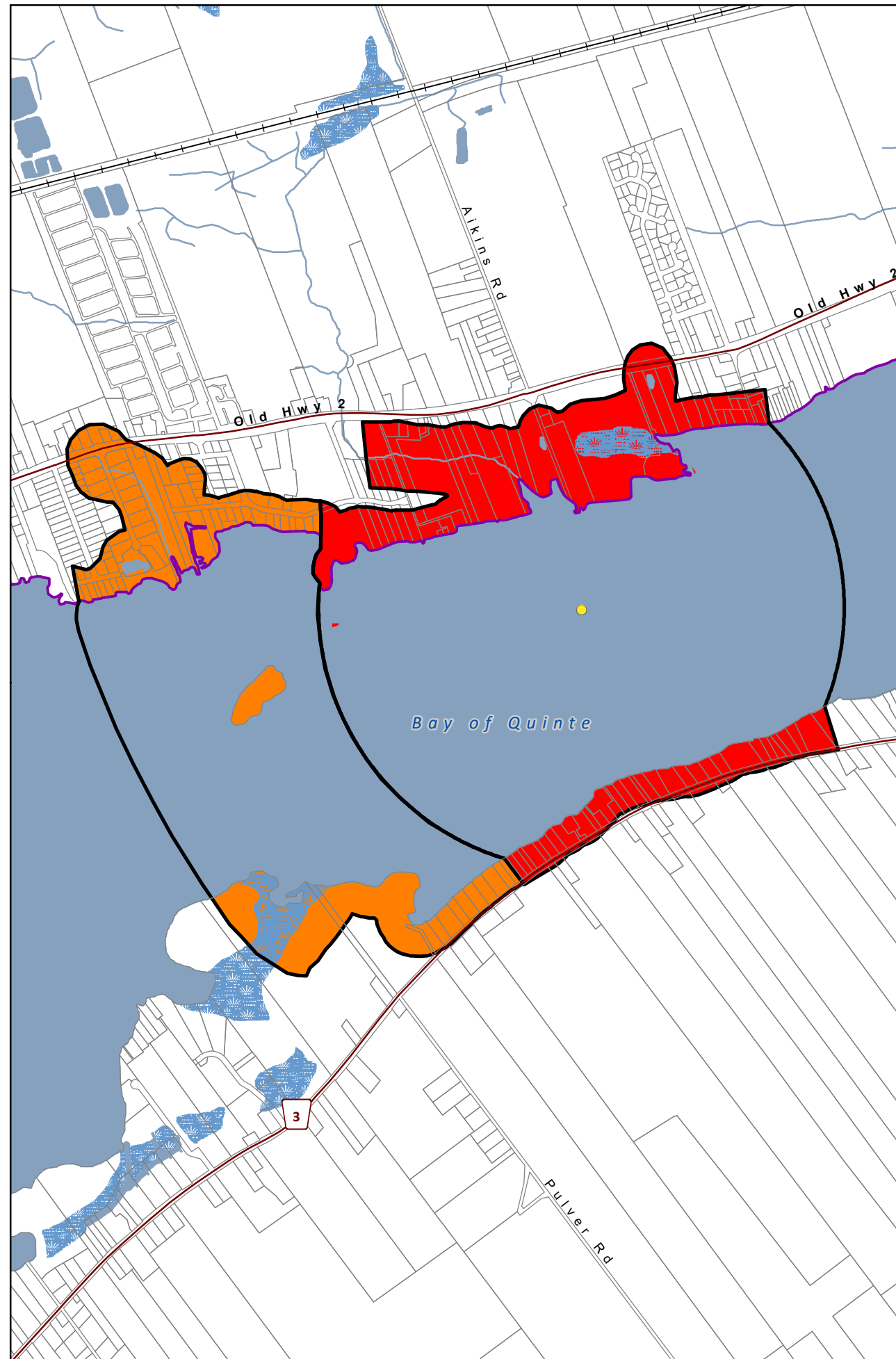


**Trent Conservation Coalition  
Source Protection Region**  
[www.trentsourceprotection.on.ca](http://www.trentsourceprotection.on.ca)

This map has been prepared for the purpose of meeting the provincial requirements under the Clean Water Act, 2006. If it is proposed to use it for another purpose, it would be advisable to first consult with the responsible conservation authority.

PRODUCED BY Lower Trent Conservation on behalf of the Trent Conservation Coalition Source Protection Committee, March 2011 (Updated July 2016), with data supplied under licence by members of the Ontario Geospatial Data Exchange.





| CHEMICAL THREATS |                                   |                       |                       |
|------------------|-----------------------------------|-----------------------|-----------------------|
| Area             | Provincial Table of Circumstances |                       |                       |
|                  | Significant                       | Moderate              | Low                   |
|                  | Table 22 (CIPZWE8S)               | Table 26 (CIPZWE8M)   | Table 34 (CIPZWE8L)   |
|                  | -                                 | Table 29 (CIPZWE6.4M) | Table 37 (CIPZWE6.4L) |

| PATHOGEN THREATS |                                   |                       |                       |
|------------------|-----------------------------------|-----------------------|-----------------------|
| Area             | Provincial Table of Circumstances |                       |                       |
|                  | Significant                       | Moderate              | Low                   |
|                  | Table 48 (PIPZWE8S)               | Table 52 (PIPZWE8M)   | Table 61 (PIPZWE8L)   |
|                  |                                   | Table 55 (PIPZWE6.4M) | Table 64 (PIPZWE6.4L) |

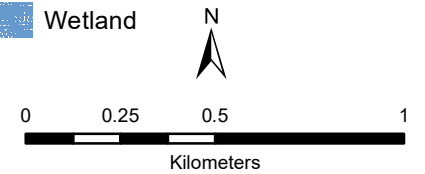
These tables indicate where chemical and pathogen threats are (or would be for future activities) significant, moderate, or low in the Intake Protection Zone. The table numbers and codes refer to the Provincial Table of Circumstances that list the circumstances under which these threats can be significant, moderate, or low. The Provincial Tables of Circumstances can be accessed from: the source protection homepage of [ontario.ca](http://ontario.ca) or the reports and legislation page of <http://trentsourceprotection.on.ca>

**Bayside Municipal Surface Water System Lower Trent Source Protection Area**

**Areas for Significant, Moderate, & Low Drinking Water Threats (Chemical & Pathogen Threats)**

**Legend**

- Surface Water Intake
- Railway
- Watercourse
- Main Road
- Highway
- Multi Lane Highway
- Property Boundary
- Source Protection Region
- Source Protection Area
- Upper and Single Tier Municipality
- Lower Tier Municipality
- Waterbody
- Wetland

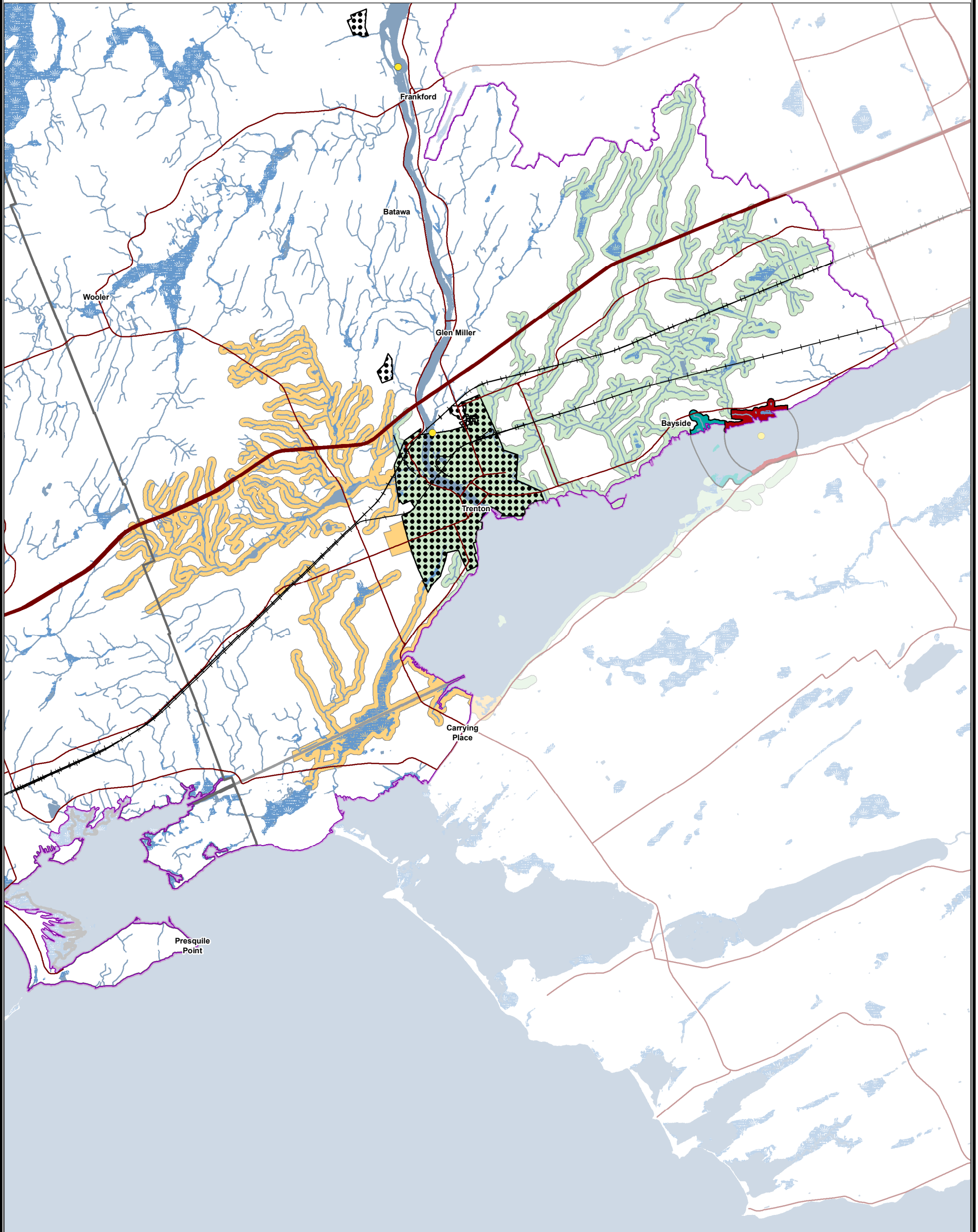


**Trent Conservation Coalition Source Protection Region**

[www.trentsourceprotection.on.ca](http://www.trentsourceprotection.on.ca)

This map has been prepared for the purpose of meeting the provincial requirements under the Clean Water Act, 2006. If it is proposed to use it for another purpose, it would be advisable to first consult with the responsible conservation authority.

PRODUCED BY Lower Trent Conservation on behalf of the Trent Conservation Coalition Source Protection Committee, March 2011 (Updated July 2016), with data supplied under licence by members of the Ontario Geospatial Data Exchange.



This map has been prepared for the purpose of meeting the provincial requirements under the Clean Water Act, 2006. If it is proposed to use it for another purpose, it would be advisable to first consult with the responsible conservation authority.

PRODUCED BY Lower Trent Conservation on behalf of the Trent Conservation Coalition Source Protection Committee, March 2011 (Updated July 2016), with data supplied under licence by members of the Ontario Geospatial Data Exchange.

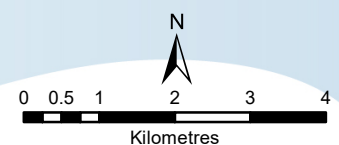
Waterbodies and watercourses located within the extent of an intake protection zone are included in that zone.

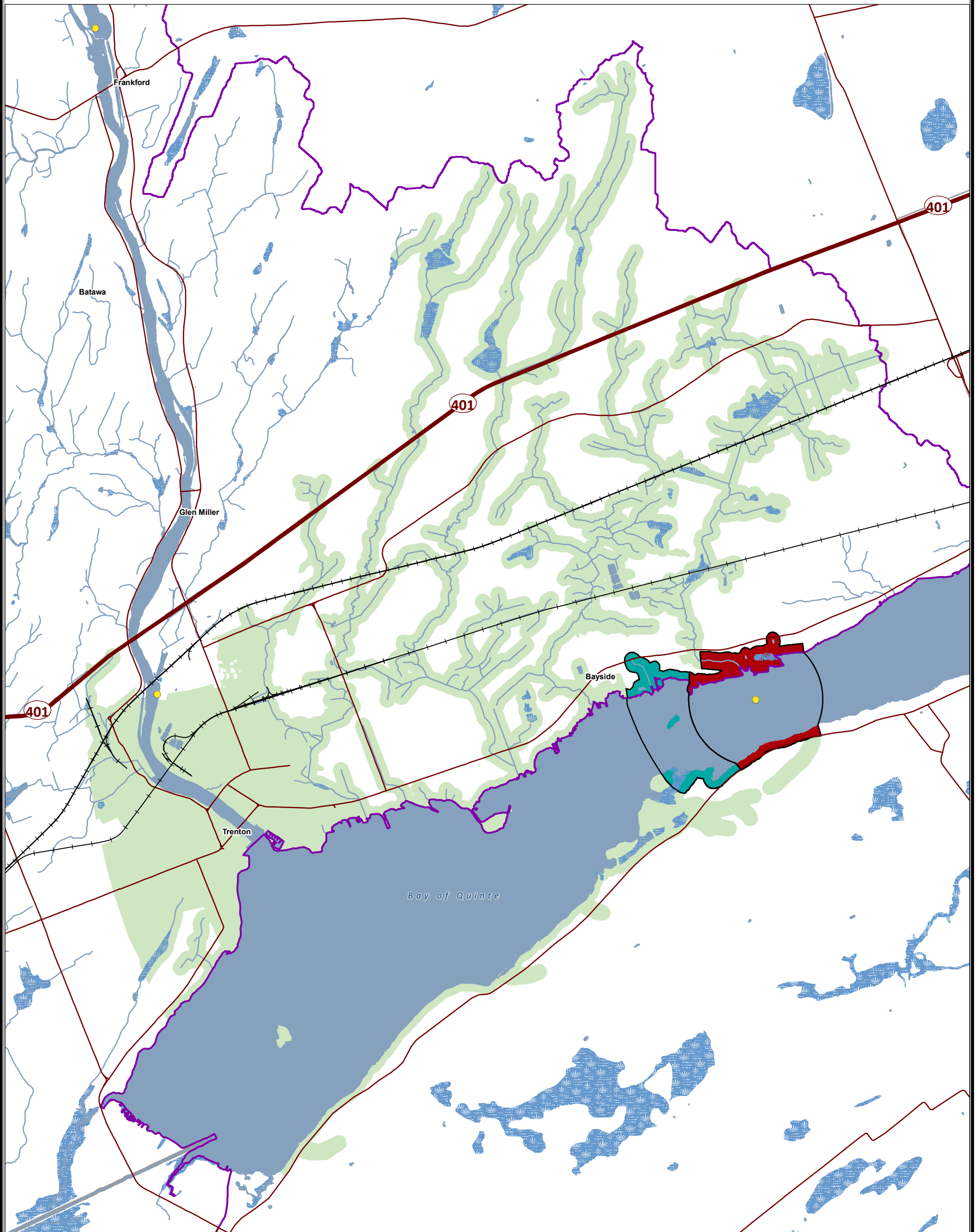
### Legend

- Surface Water Intake
- Railway
- Watercourse
- Main Road
- Highway
- Multi Lane Highway
- Source Protection Region
- Source Protection Areas
- Upper and Single Tier Municipality
- Lower Tier Municipality
- Waterbody
- Wetland

### Intake Protection Zones

- IPZ-1
- IPZ-2
- IPZ-3a (Vulnerability Score = 5.6)
- IPZ-3b (Vulnerability Score = 2.4)





This map has been prepared for the purpose of meeting the provincial requirements under the Clean Water Act, 2006. If it is proposed to use it for another purpose, it would be advisable to first consult with the responsible conservation authority.

PRODUCED BY Lower Trent Conservation on behalf of the Trent Conservation Coalition Source Protection Committee, March 2011 (Updated July 2016), with data supplied under licence by members of the Ontario Geospatial Data Exchange.

### Legend

- Surface Water Intake
- Railway
- Watercourse
- Main Road
- Highway
- Multi Lane Highway
- Source Protection Region
- Source Protection Areas
- Upper and Single Tier Municipality
- Lower Tier Municipality
- Waterbody
- Wetland

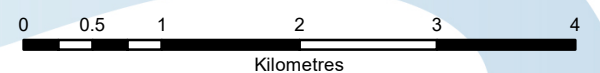
### Managed Lands

<40%

### Intake Protection Zones

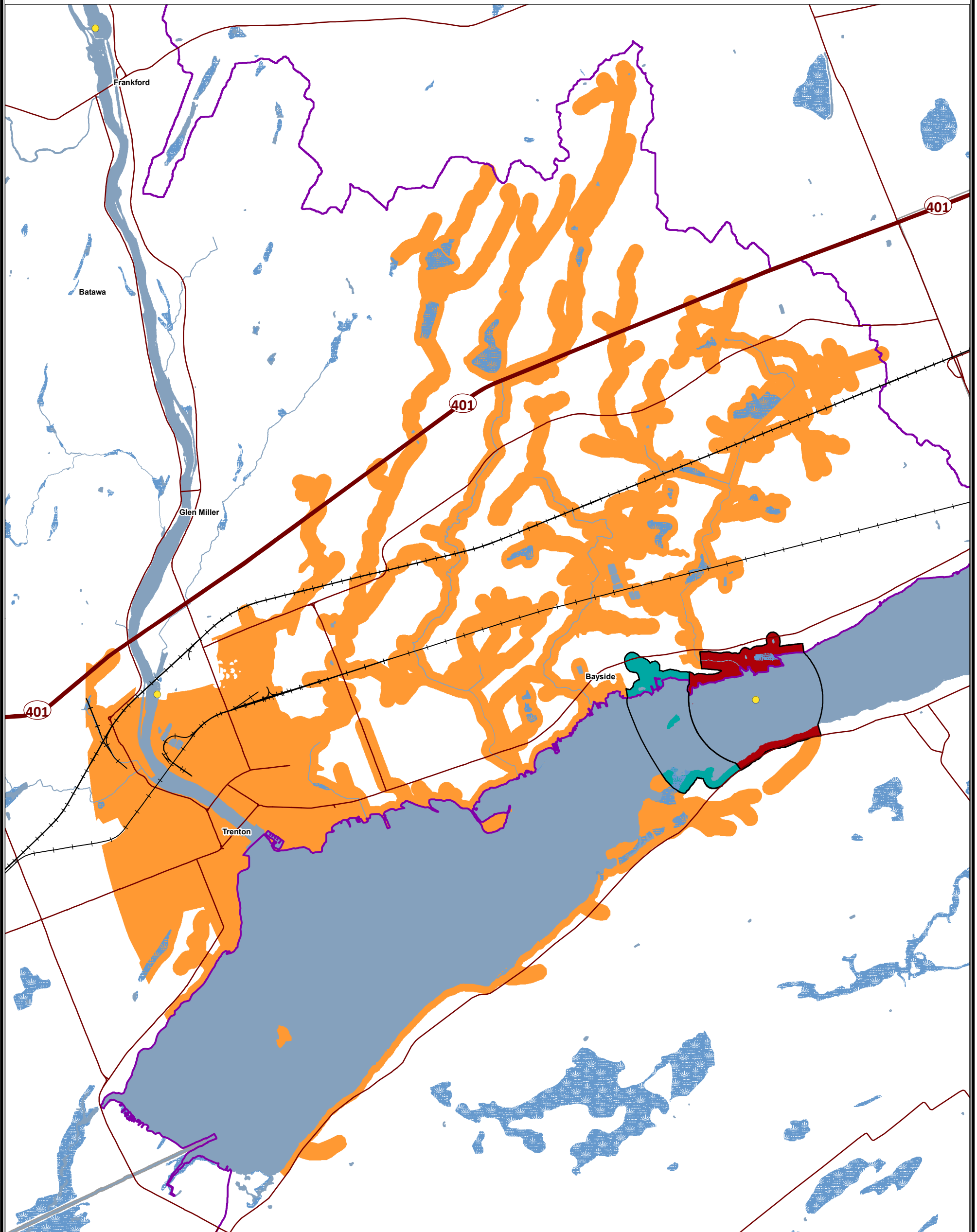
IPZ-1

IPZ-2



**Trent Conservation Coalition  
Source Protection Region**

[www.trentsourceprotection.on.ca](http://www.trentsourceprotection.on.ca)



This map has been prepared for the purpose of meeting the provincial requirements under the Clean Water Act, 2006. If it is proposed to use it for another purpose, it would be advisable to first consult with the responsible conservation authority.

PRODUCED BY Lower Trent Conservation on behalf of the Trent Conservation Coalition Source Protection Committee, March 2011 (Updated July 2016), with data supplied under licence by members of the Ontario Geospatial Data Exchange.

**Legend**

- Surface Water Intake
- Railway
- Watercourse
- Main Road
- Highway
- Multi Lane Highway
- Source Protection Region
- Source Protection Areas
- Upper and Single Tier Municipality
- Lower Tier Municipality
- Waterbody
- Wetland

**Livestock Density**

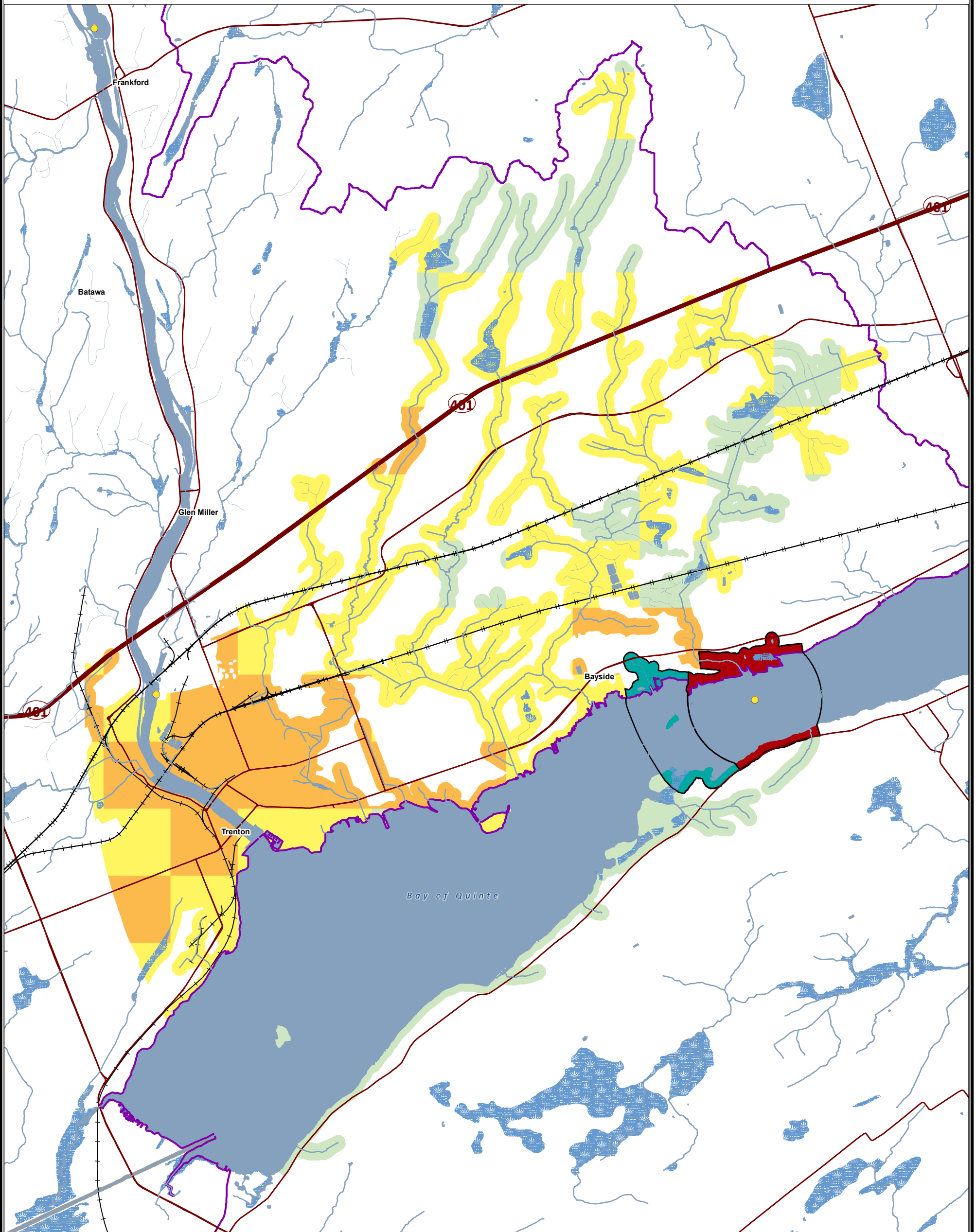
<0.5 NU/acre

**Intake Protection Zones**

IPZ-1

IPZ-2

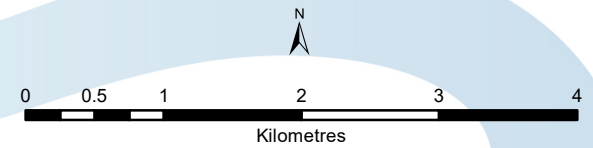




This map has been prepared for the purpose of meeting the provincial requirements under the Clean Water Act, 2006. If it is proposed to use it for another purpose, it would be advisable to first consult with the responsible conservation authority.

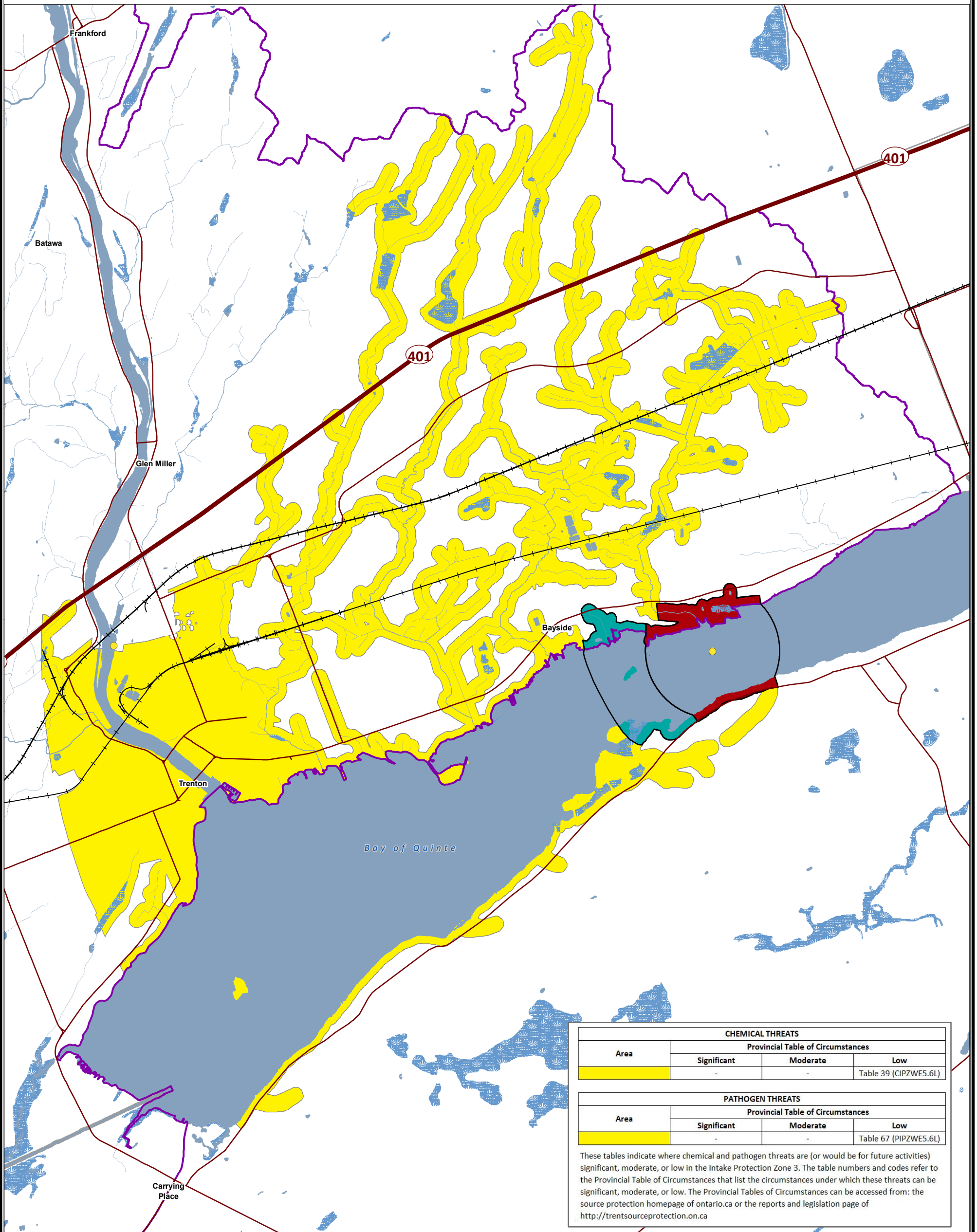
PRODUCED BY Lower Trent Conservation on behalf of the Trent Conservation Coalition Source Protection Committee, March 2011 (Updated July 2016), with data supplied under licence by members of the Ontario Geospatial Data Exchange.

- Legend**
- Surface Water Intake
  - Railway
  - Watercourse
  - Main Road
  - Highway
  - Multi Lane Highway
  - Source Protection Region
  - Source Protection Areas
  - Upper and Single Tier Municipality
  - Lower Tier Municipality
  - Waterbody
  - Wetland
- Intake Protection Zones**
- IPZ-1
  - IPZ-2
- Impervious Surface Area**
- <1%
  - >1% and <8%
  - >8% and <80%



**Trent Conservation Coalition  
Source Protection Region**

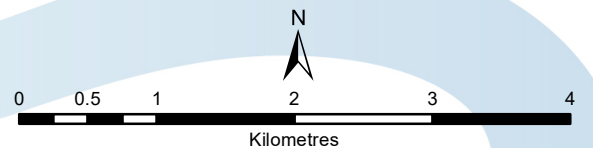
[www.trentsourceprotection.on.ca](http://www.trentsourceprotection.on.ca)



This map has been prepared for the purpose of meeting the provincial requirements under the Clean Water Act, 2006. If it is proposed to use it for another purpose, it would be advisable to first consult with the responsible conservation authority.

PRODUCED BY Lower Trent Conservation on behalf of the Trent Conservation Coalition Source Protection Committee, March 2011 (Updated July 2016), with data supplied under licence by members of the Ontario Geospatial Data Exchange.

- Legend**
- Surface Water Intake
  - Railway
  - Watercourse
  - Main Road
  - Highway
  - Multi Lane Highway
  - Source Protection Region
  - Source Protection Areas
  - Upper and Single Tier Municipality
  - Lower Tier Municipality
  - Waterbody
  - Wetland
- Intake Protection Zones**
- IPZ - 1
  - IPZ - 2
  - IPZ - 3a



**Trent Conservation Coalition  
Source Protection Region**

[www.trentsourceprotection.on.ca](http://www.trentsourceprotection.on.ca)