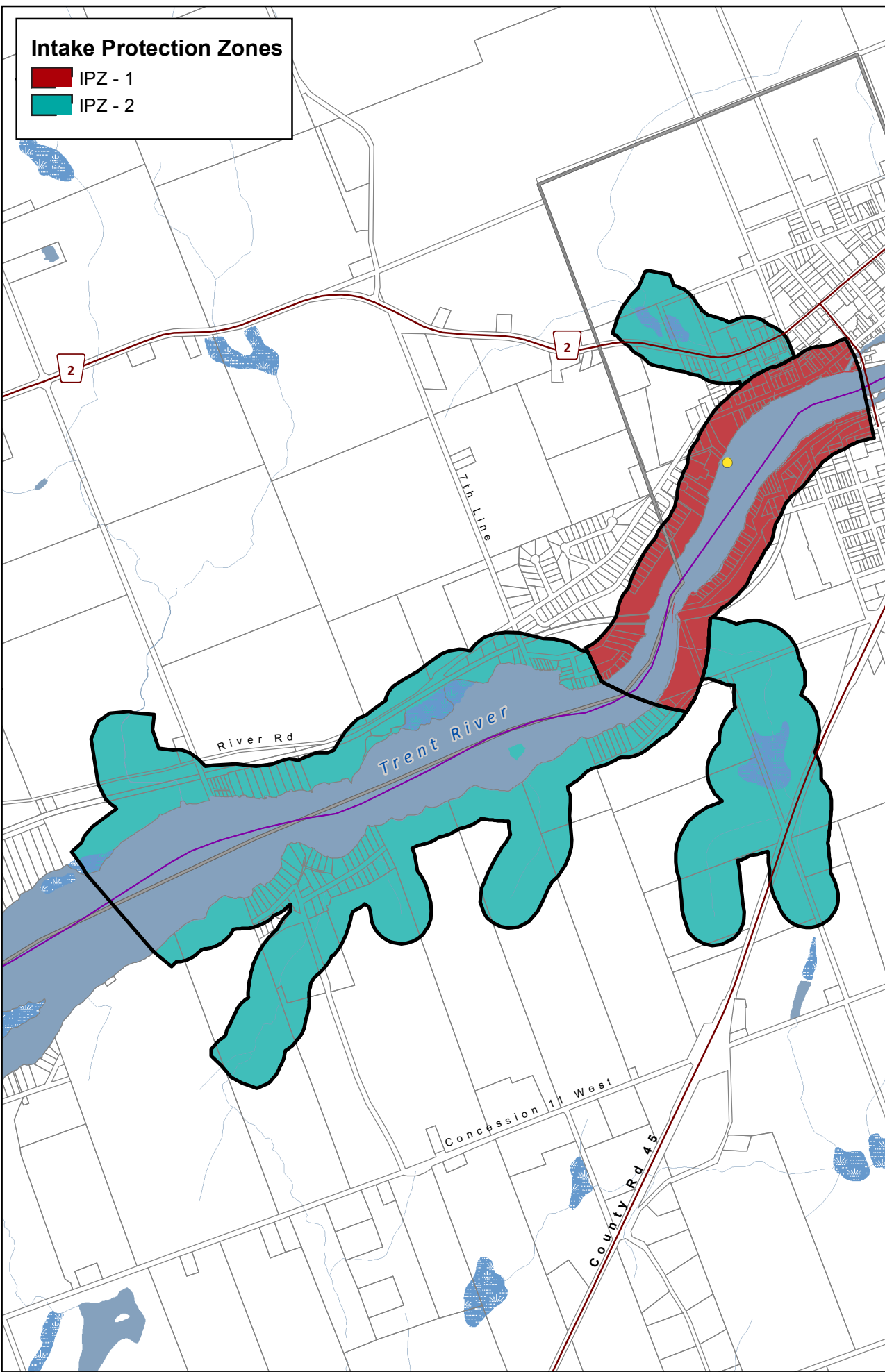
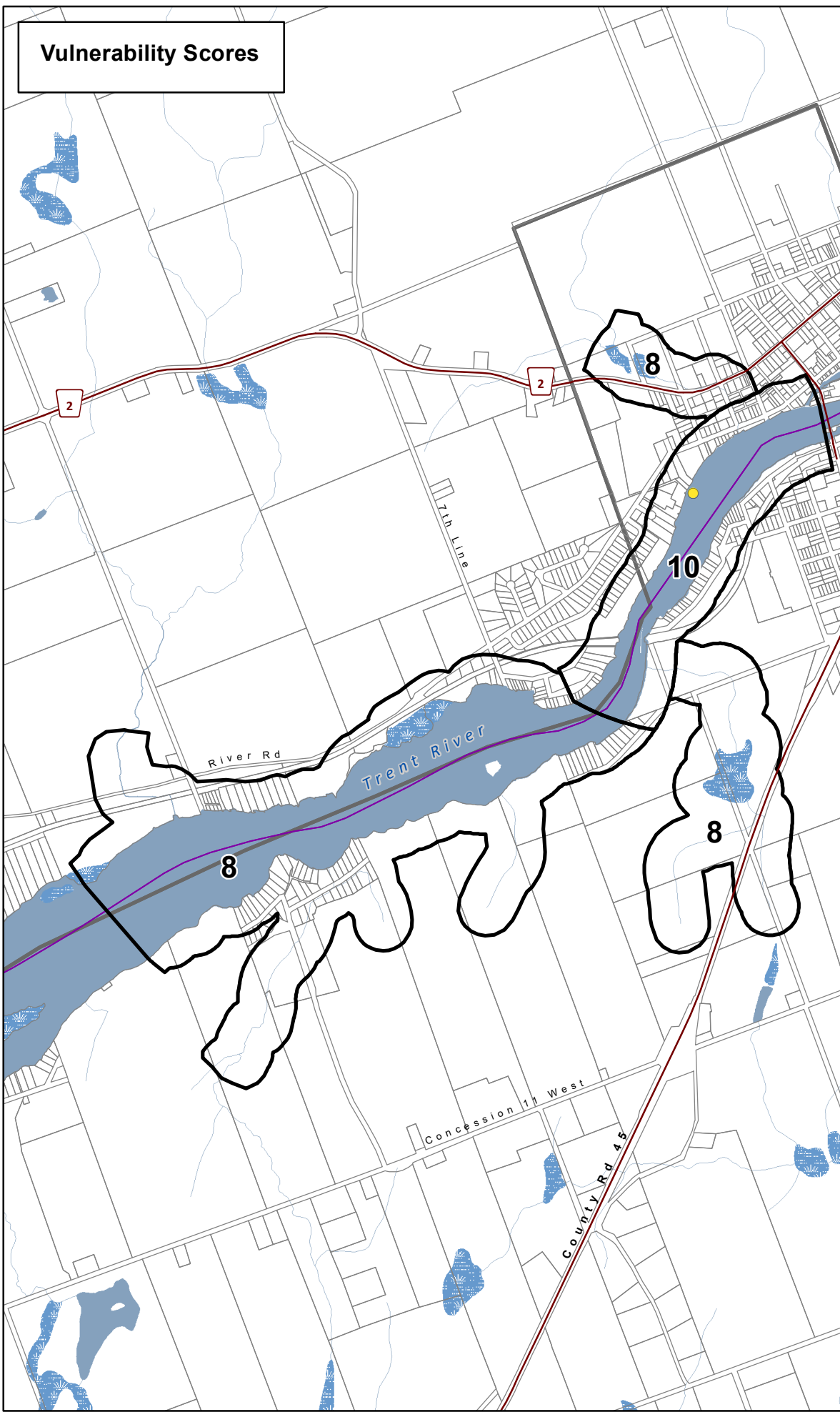


**Intake Protection Zones**

- IPZ - 1
- IPZ - 2



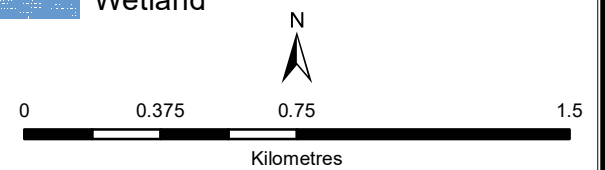
**Vulnerability Scores**



**Hastings  
Municipal Surface  
Water System  
Otonabee-Peterborough  
Source Protection Area  
Intake Protection Zones &  
Vulnerability Scores**

**Legend (IPZ 1 & 2)**

- Surface Water Intake
- Railway
- Watercourse
- Main Road
- Highway
- Multi Lane Highway
- Property Boundary
- Source Protection Region
- Source Protection Area
- Lower Tier Municipality
- Upper and Single Tier Municipality
- Intake Protection Zones
- Waterbody
- Wetland



**Trent Conservation Coalition  
Source Protection Region**  
[www.trentsourceprotection.on.ca](http://www.trentsourceprotection.on.ca)

This map has been prepared for the purpose of meeting the provincial requirements under the Clean Water Act, 2006. If it is proposed to use it for another purpose, it would be advisable to first consult with the responsible conservation authority.

PRODUCED BY Lower Trent Conservation on behalf of the Trent Conservation Coalition Source Protection Committee, March 2011 (Updated July 2016), with data supplied under licence by members of the Ontario Geospatial Data Exchange.

Waterbodies and watercourses located within the extent of an intake protection zone are included in that zone.

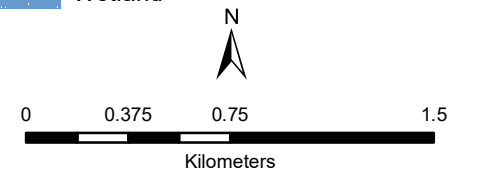


**Hastings  
Municipal Surface  
Water System  
Otonabee-Peterborough  
Source Protection Area**

**Managed Land, Livestock  
Density & Total  
Impervious Surface Area**

**Legend**

- Surface Water Intake
- Railway
- Watercourse
- Main Road
- Highway
- Multi Lane Highway
- Property Boundary
- Source Protection Region
- Source Protection Area
- Lower and Single Tier Municipality
- Upper Tier Municipality
- Intake Protection Zones
- Waterbody
- Wetland

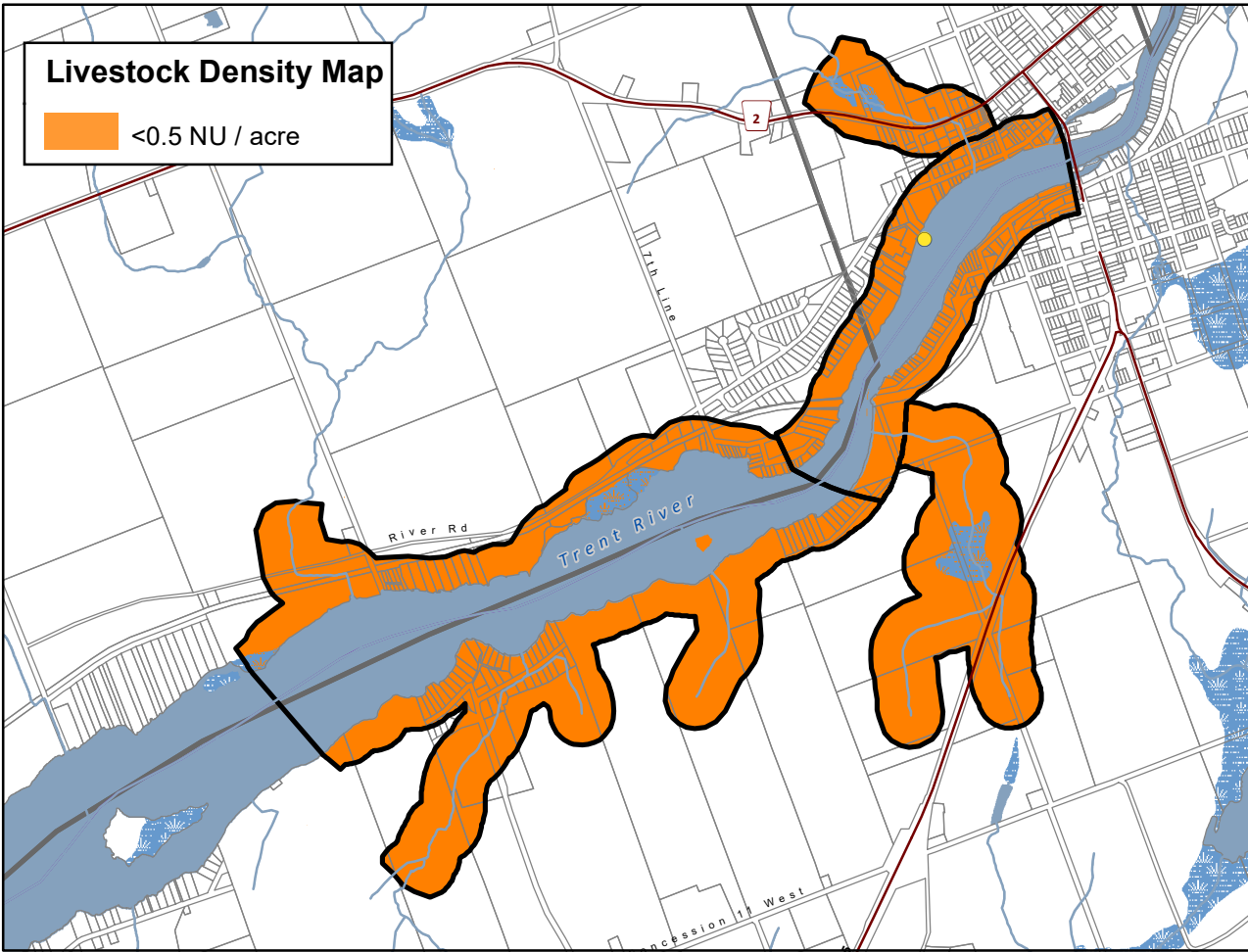
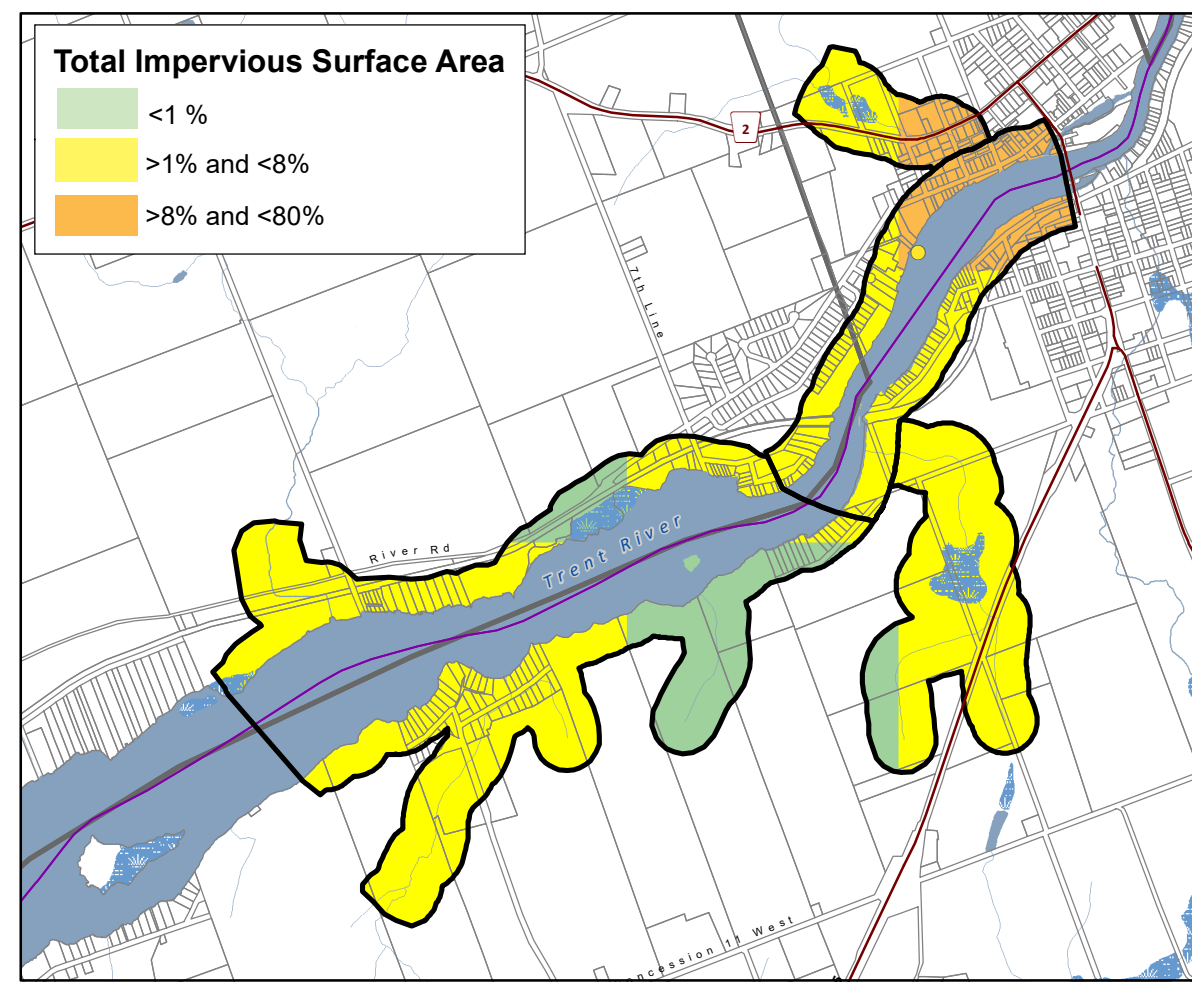
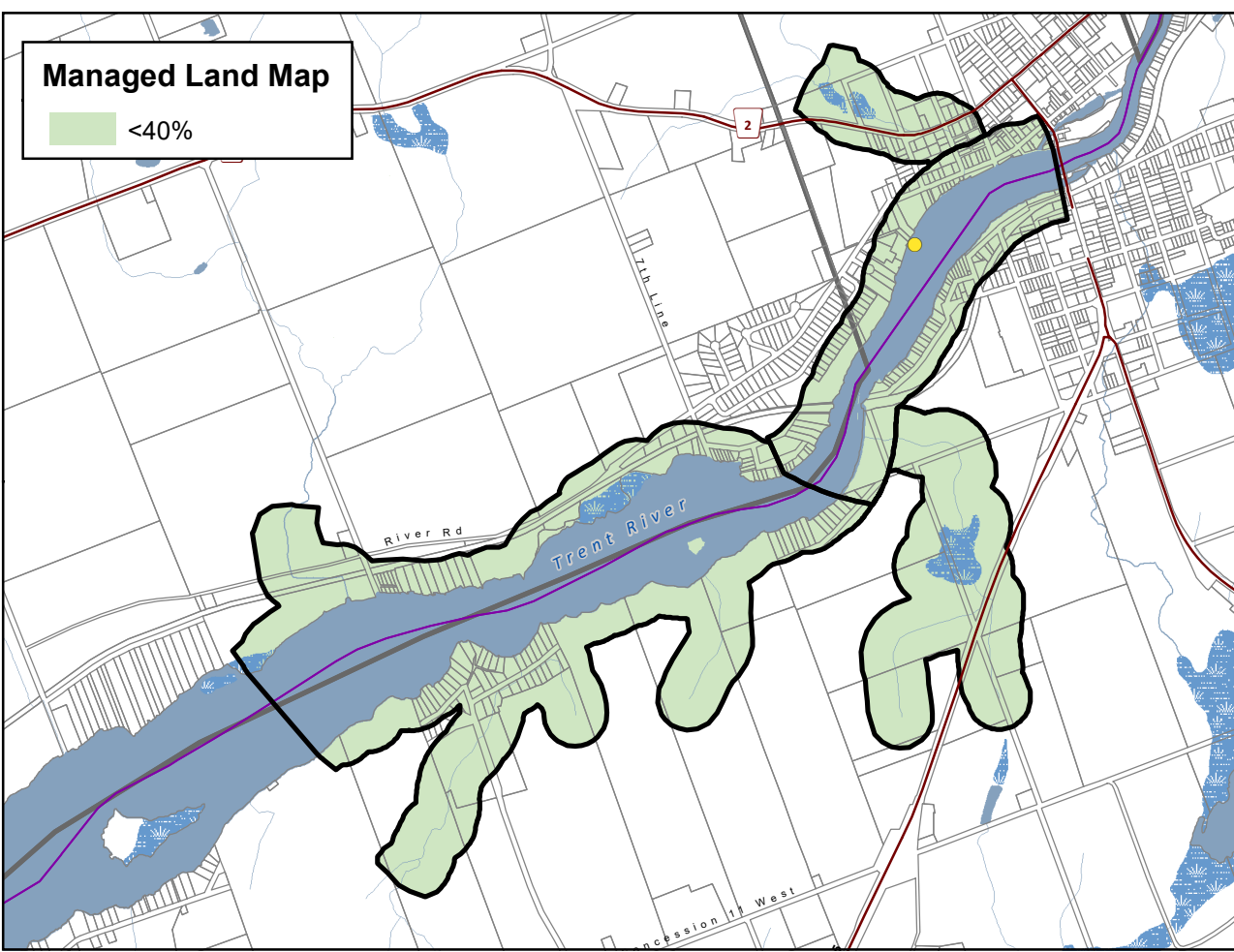


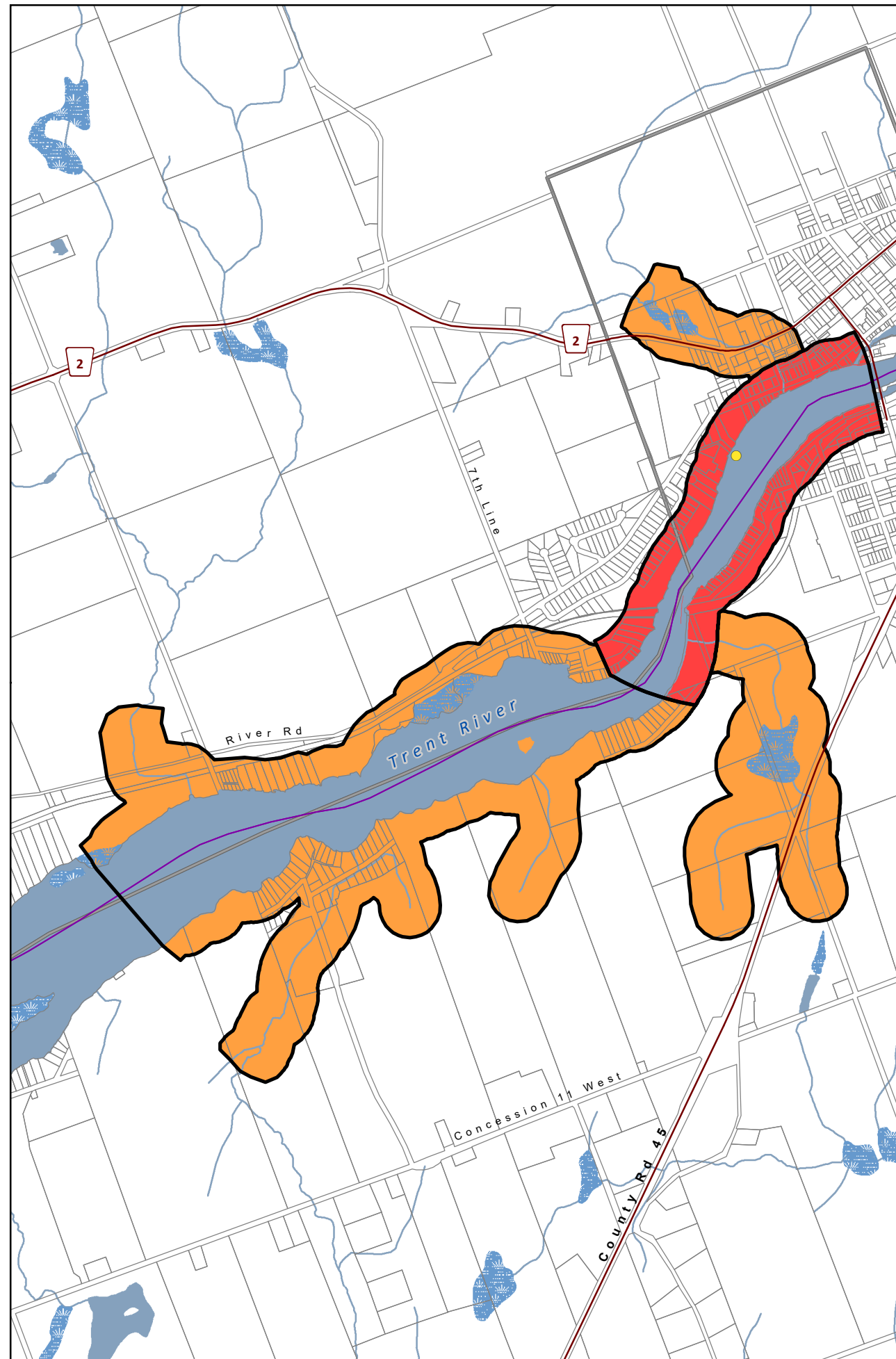
**Trent Conservation Coalition  
Source Protection Region**

[www.trentsourceprotection.on.ca](http://www.trentsourceprotection.on.ca)

This map has been prepared for the purpose of meeting the provincial requirements under the Clean Water Act, 2006. If it is proposed to use it for another purpose, it would be advisable to first consult with the responsible conservation authority.

PRODUCED BY Lower Trent Conservation on behalf of the Trent Conservation Coalition Source Protection Committee, March 2011 (Updated July 2016), with data supplied under licence by members of the Ontario Geospatial Data Exchange.





CHEMICAL THREATS			
Area	Provincial Table of Circumstances		
	Significant	Moderate	Low
	Table 19 (CIPZ10S)	Table 23 (CIPZ10M)	Table 31 (CIPZWE10L)
	Table 22 (CIPZWE8S)	Table 26 (CIPZWE8M)	Table 34 (CIPZWE8L)

PATHOGEN THREATS			
Area	Provincial Table of Circumstances		
	Significant	Moderate	Low
	Table 45 (PIPZ10S)	Table 49 (PIPZWE10M)	Table 58 (PIPZ10L)
	Table 48 (PIPZWE8S)	Table 52 (PIPZWE8M)	Table 61 (PIPZWE8L)

These tables indicate where chemical and pathogen threats are (or would be for future activities) significant, moderate, or low in the Intake Protection Zone. The table numbers and codes refer to the Provincial Table of Circumstances that list the circumstances under which these threats can be significant, moderate, or low. The Provincial Tables of Circumstances can be accessed from: the source protection homepage of [ontario.ca](http://ontario.ca) or the reports and legislation page of <http://trentsourceprotection.on.ca>

# Hastings Municipal Surface Water System

## Otonabee-Peterborough Source Protection Area

### Areas for Significant, Moderate, & Low Drinking Water Threats (Chemical & Pathogen Threats)

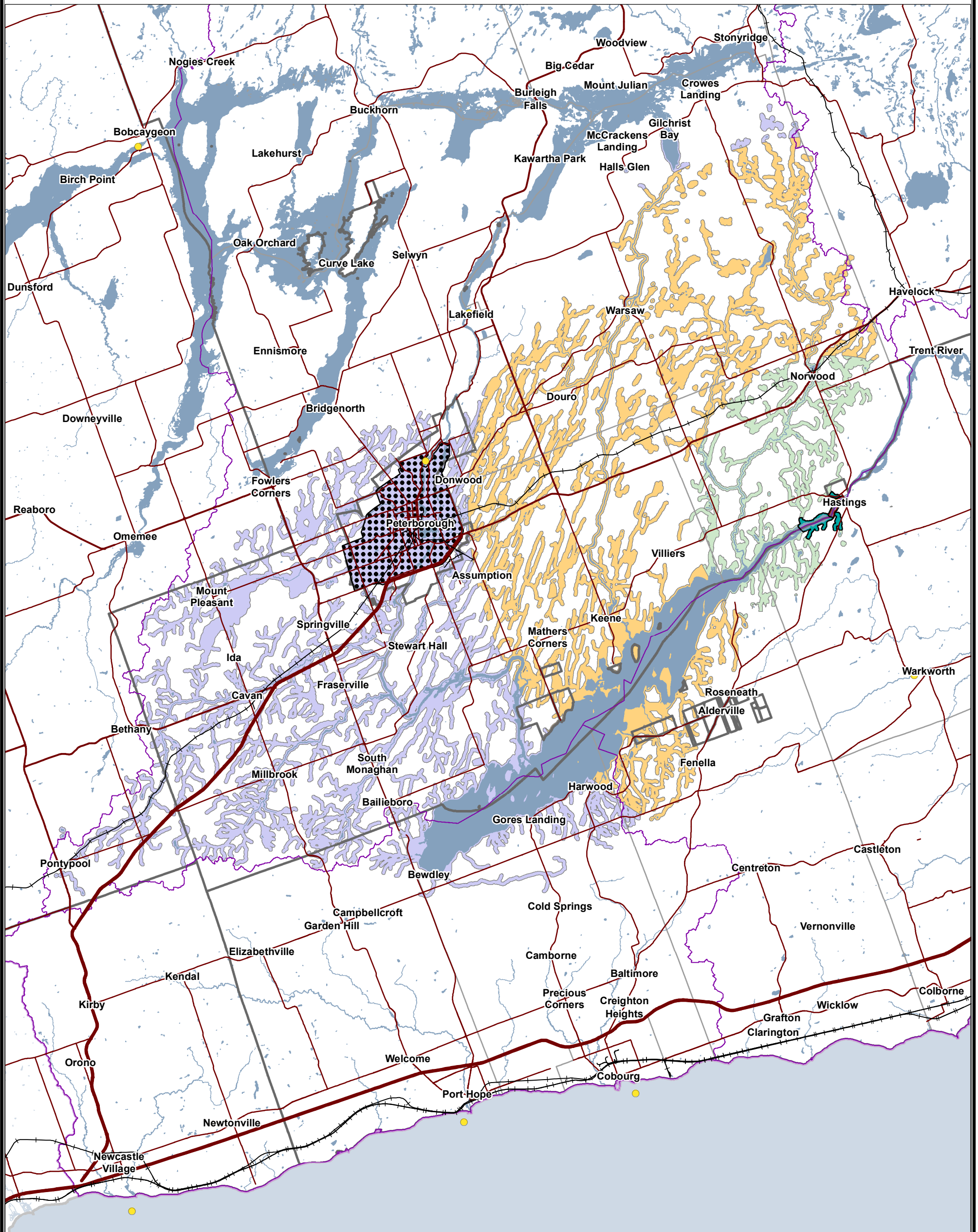
**Legend**

- Surface Water Intake
  - Railway
  - Watercourse
  - Main Road
  - Highway
  - Multi Lane Highway
  - Property Boundary
  - Source Protection Region
  - Source Protection Area
  - Upper and Single Tier Municipality
  - Lower Tier Municipality
  - Waterbody
  - Wetland
- N
- 0      0.375      0.75      1.5  
Kilometers

**Trent Conservation Coalition Source Protection Region**  
[www.trentsourceprotection.on.ca](http://www.trentsourceprotection.on.ca)

This map has been prepared for the purpose of meeting the provincial requirements under the Clean Water Act, 2006. If it is proposed to use it for another purpose, it would be advisable to first consult with the responsible conservation authority.

PRODUCED BY Lower Trent Conservation on behalf of the Trent Conservation Coalition Source Protection Committee, March 2011 (Updated July 2016), with data supplied under licence by members of the Ontario Geospatial Data Exchange.



This map has been prepared for the purpose of meeting the provincial requirements under the Clean Water Act, 2006. If it is proposed to use it for another purpose, it would be advisable to first consult with the responsible conservation authority.

PRODUCED BY Lower Trent Conservation on behalf of the Trent Conservation Coalition Source Protection Committee, March 2011 (Updated July 2016), with data supplied under licence by members of the Ontario Geospatial Data Exchange.

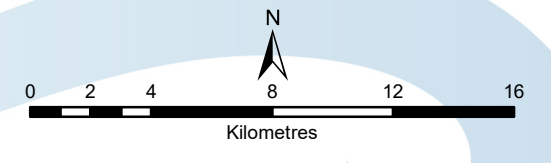
Waterbodies and watercourses located within the extent of an intake protection zone are included in that zone.

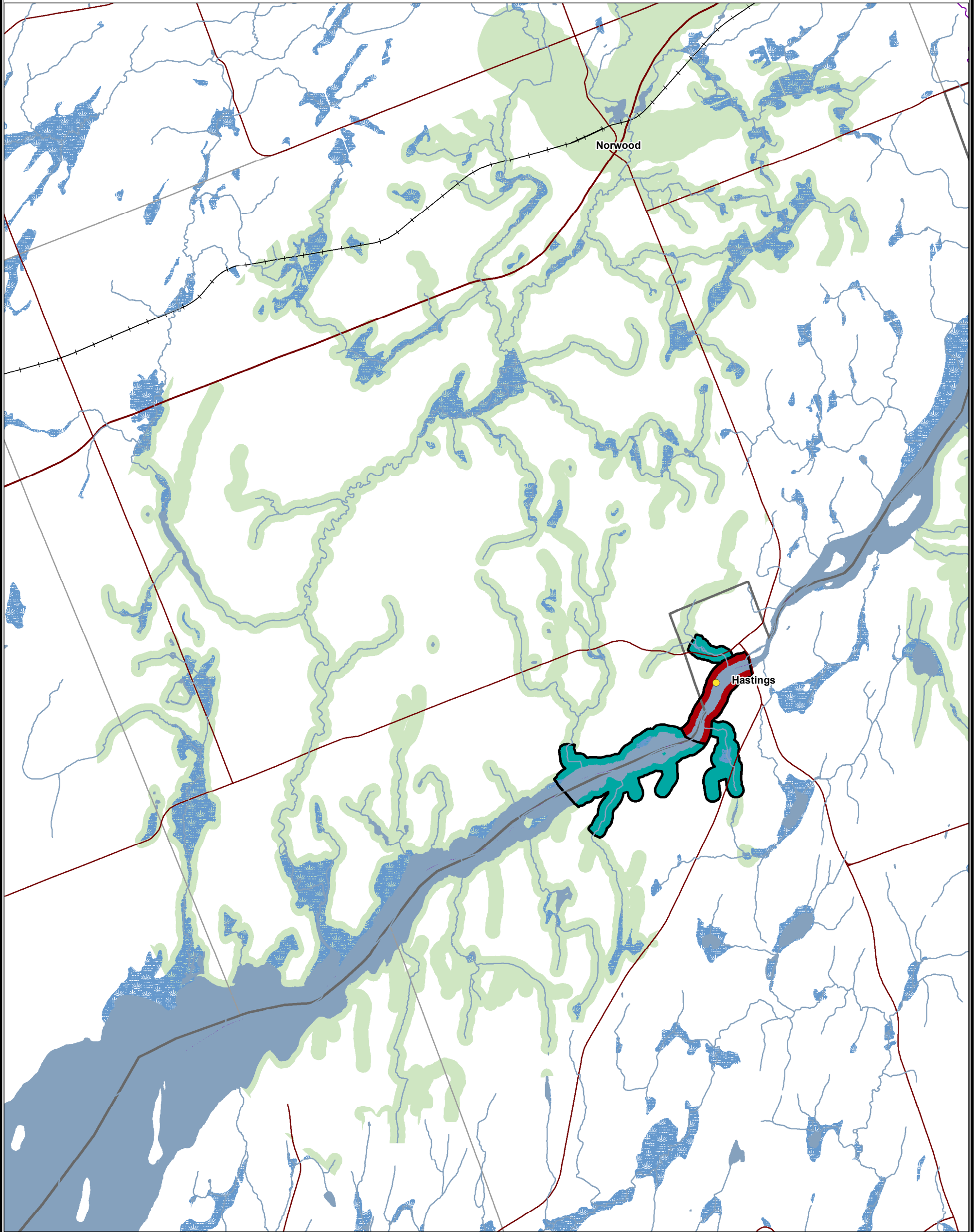
**Legend**

- Surface Water Intake
- Railway
- Watercourse
- Main Road
- Highway
- Multi Lane Highway
- Source Protection Region
- Source Protection Areas
- Upper and Single Tier Municipality
- Lower Tier Municipality
- Waterbody

**SurfaceWaterIntakeProtectionZone**

- IPZ-1
- IPZ-2
- IPZ-3a (Vulnerability Score = 6)
- IPZ-3b (Vulnerability Score = 3)
- IPZ-3c (Vulnerability Score = 2)
- Transport Pathway





This map has been prepared for the purpose of meeting the provincial requirements under the Clean Water Act, 2006. If it is proposed to use it for another purpose, it would be advisable to first consult with the responsible conservation authority.

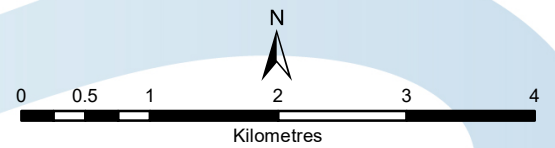
PRODUCED BY Lower Trent Conservation on behalf of the Trent Conservation Coalition Source Protection Committee, March 2011 (Updated July 2016), with data supplied under licence by members of the Ontario Geospatial Data Exchange.

**Legend**

- Surface Water Intake
- Railway
- Watercourse
- Main Road
- Highway
- Multi Lane Highway
- Source Protection Region
- Source Protection Areas
- Upper and Single Tier Municipality
- Lower Tier Municipality
- Waterbody
- Wetland

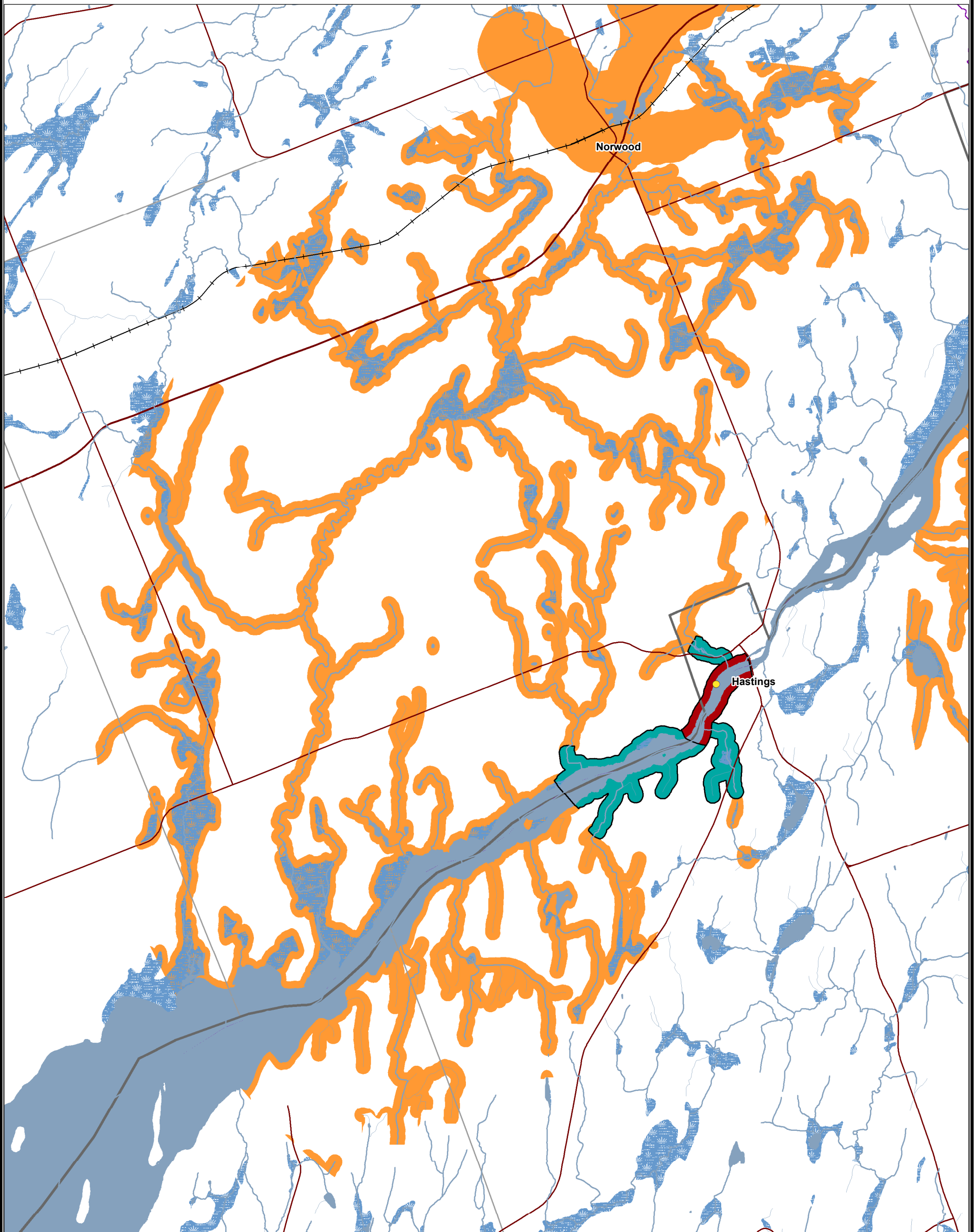
**Managed Lands**

<40%



**Trent Conservation Coalition  
Source Protection Region**

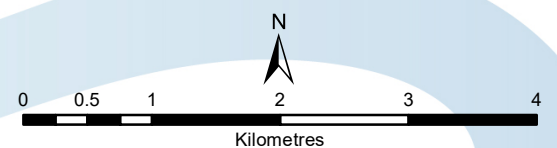
[www.trentsourceprotection.on.ca](http://www.trentsourceprotection.on.ca)



This map has been prepared for the purpose of meeting the provincial requirements under the Clean Water Act, 2006. If it is proposed to use it for another purpose, it would be advisable to first consult with the responsible conservation authority.

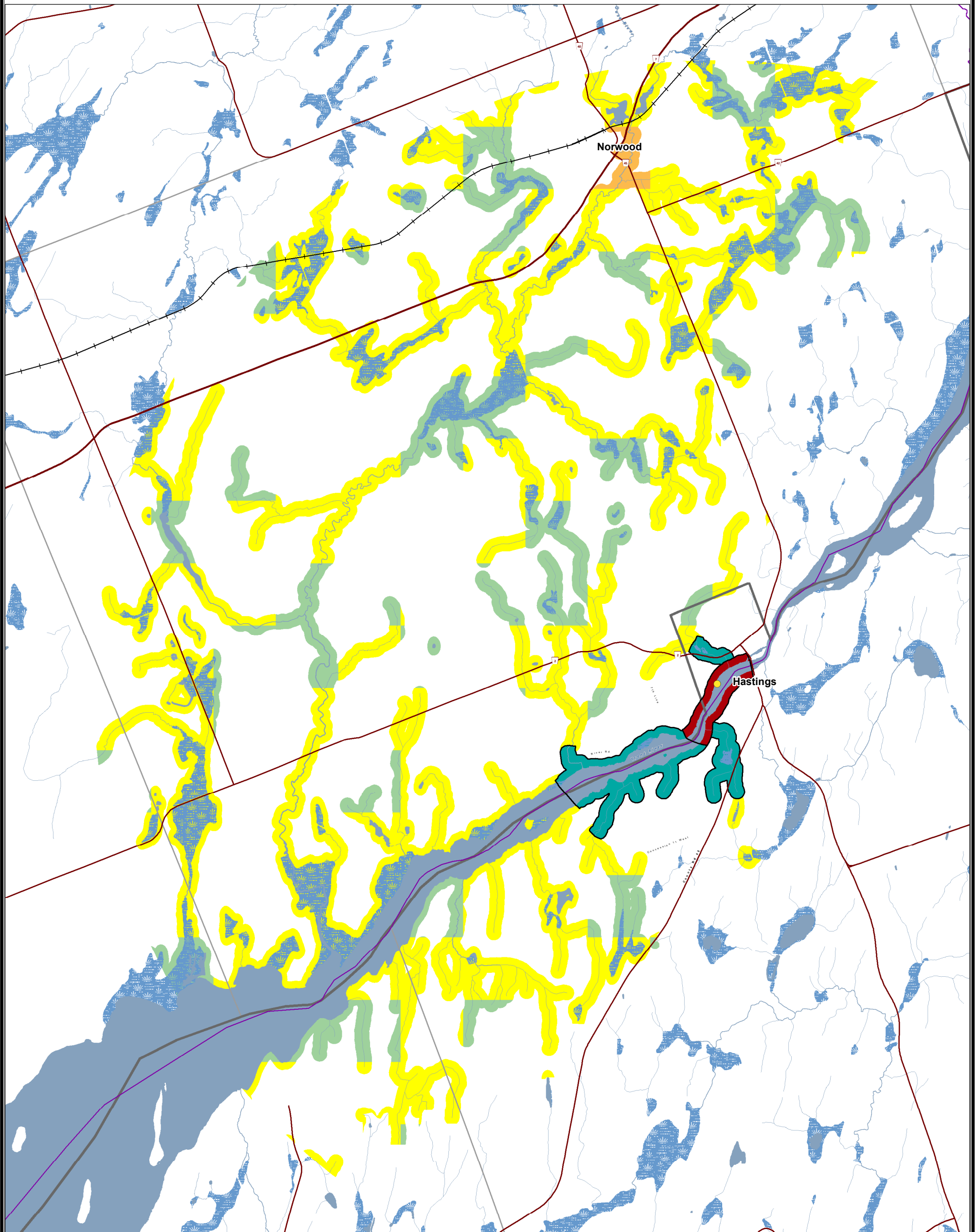
PRODUCED BY Lower Trent Conservation on behalf of the Trent Conservation Coalition Source Protection Committee, March 2011 (Updated July 2016), with data supplied under licence by members of the Ontario Geospatial Data Exchange.

- Legend**
- Surface Water Intake
  - **Livestock Density**  
■ <math>< 0.5 \text{ NU/acre}</math>
  - Railway
  - Watercourse
  - Main Road
  - Highway
  - Multi Lane Highway
  - Source Protection Region
  - Source Protection Areas
  - Upper and Single Tier Municipality
  - Lower and Tier Municipality
  - Waterbody
  - Wetland



**Trent Conservation Coalition  
Source Protection Region**

[www.trentsourceprotection.on.ca](http://www.trentsourceprotection.on.ca)

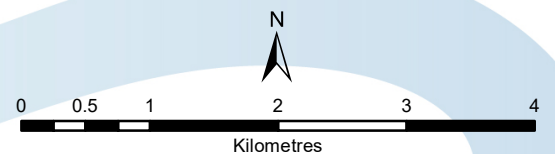


This map has been prepared for the purpose of meeting the provincial requirements under the Clean Water Act, 2006. If it is proposed to use it for another purpose, it would be advisable to first consult with the responsible conservation authority.

PRODUCED BY Lower Trent Conservation on behalf of the Trent Conservation Coalition Source Protection Committee, March 2011 (Updated July 2016), with data supplied under licence by members of the Ontario Geospatial Data Exchange.

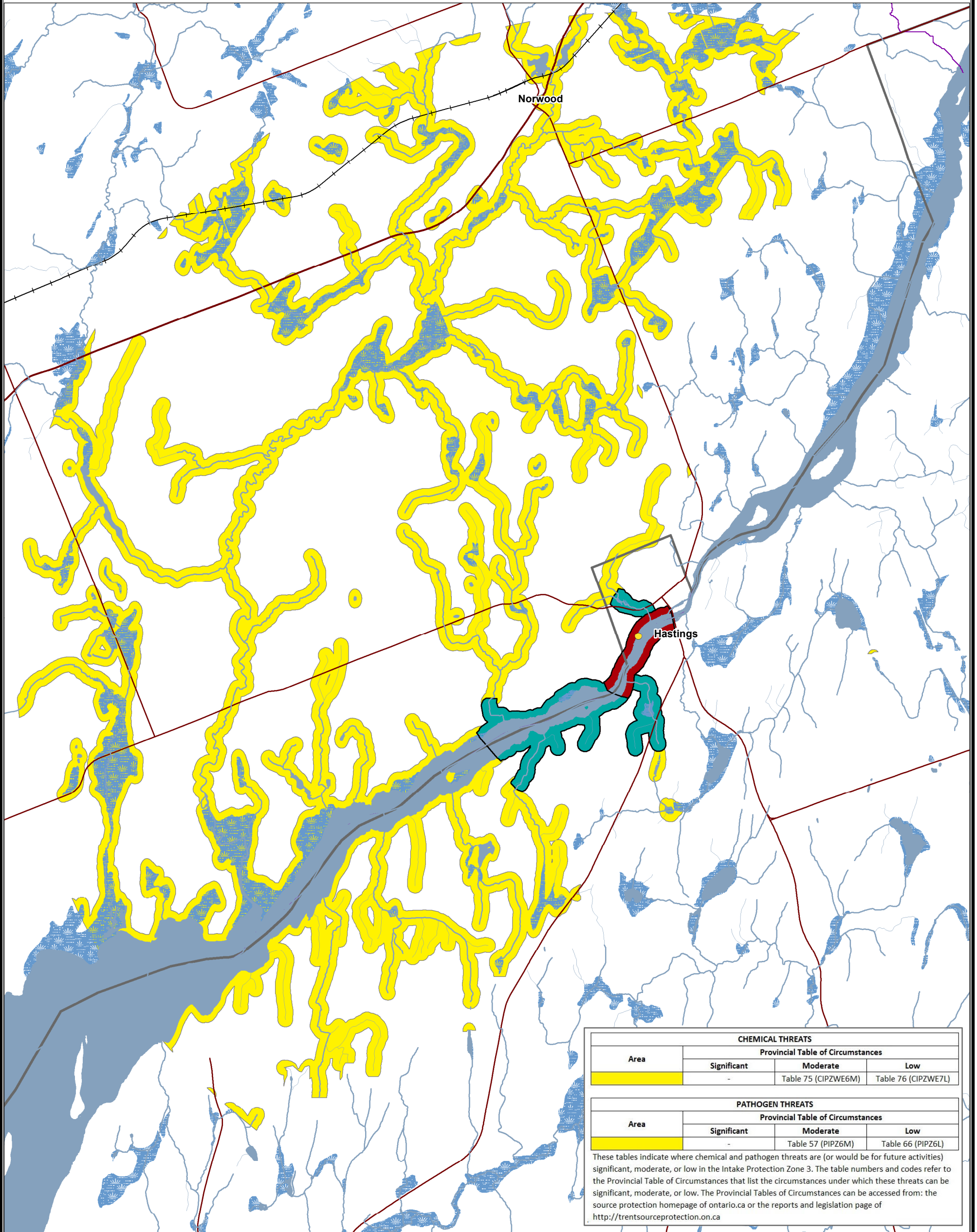
**Legend**

- Surface Water Intake
  - Railway
  - Watercourse
  - Main Road
  - Highway
  - Multi Lane Highway
  - Source Protection Region
  - Source Protection Areas
  - Upper and Single Tier Municipality
  - Lower Tier Municipality
  - Waterbody
  - Wetland
- Impervious Surface Area**
- <1%
  - >1% and <8%
  - >8% and <80%



**Trent Conservation Coalition  
Source Protection Region**

[www.trentsourceprotection.on.ca](http://www.trentsourceprotection.on.ca)



CHEMICAL THREATS			
Area	Provincial Table of Circumstances		
	Significant	Moderate	Low
	-	Table 75 (CIPZWE6M)	Table 76 (CIPZWE7L)

PATHOGEN THREATS			
Area	Provincial Table of Circumstances		
	Significant	Moderate	Low
	-	Table 57 (PIPZ6M)	Table 66 (PIPZ6L)

These tables indicate where chemical and pathogen threats are (or would be for future activities) significant, moderate, or low in the Intake Protection Zone 3. The table numbers and codes refer to the Provincial Table of Circumstances that list the circumstances under which these threats can be significant, moderate, or low. The Provincial Tables of Circumstances can be accessed from: the source protection homepage of ontario.ca or the reports and legislation page of <http://trentsourceprotection.on.ca>

This map has been prepared for the purpose of meeting the provincial requirements under the Clean Water Act, 2006. If it is proposed to use it for another purpose, it would be advisable to first consult with the responsible conservation authority.

PRODUCED BY Lower Trent Conservation on behalf of the Trent Conservation Coalition Source Protection Committee, March 2011. (Updated July 2016), with data supplied under licence by members of the Ontario Geospatial Data Exchange.

- Legend**
- Surface Water Intake
  - Railway
  - Watercourse
  - Main Road
  - Highway
  - Multi Lane Highway
  - Source Protection Region
  - Source Protection Areas
  - Upper and Single Tier Municipality
  - Lower Tier Municipality
  - Waterbody
  - Wetland
- Intake Protection Zones**
- IPZ-1
  - IPZ-2
  - IPZ-3a (Vulnerability Score = 6)

