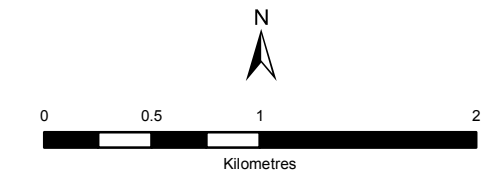


**Stirling Municipal Well System**  
**Lower Trent Source Protection Area**  
**Wellhead Protection Areas & Vulnerability**

**Legend**

- Wells
- +— Railway
- Main Road
- Highway
- Multi Lane Highway
- Source Protection Areas
- Source Protection Region
- Property Boundary
- Lower and Single Tier Municipality
- Upper Tier Municipality
- Waterbody
- Wetland
- Watercourse



**Trent Conservation Coalition**  
**Source Protection Region**

[www.trentsourceprotection.on.ca](http://www.trentsourceprotection.on.ca)

This map has been prepared for the purpose of meeting the provincial requirements under the Clean Water Act, 2006. If it is proposed to use it for another purpose, it would be advisable to first consult with the responsible conservation authority.

PRODUCED BY Lower Trent Conservation on behalf of the Trent Conservation Coalition Source Protection Committee, March 2011, (Updated September 2019) with data supplied under licence by members of the Ontario Geospatial Data Exchange.

NOTE: Waterbodies and watercourses located within the extent of a wellhead protection area are included in that area.

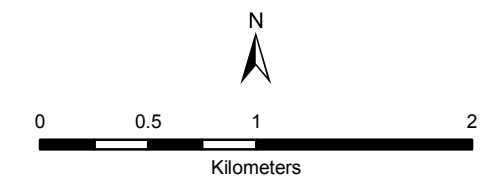
# Stirling Municipal Well System

## Lower Trent Source Protection Area

### Managed Land, Livestock Density & Total Impervious Surface Area

#### Legend

- Municipal Wells
- Railway
- Watercourse
- Main Road
- Highway
- Multi Lane Highway
- Property Boundary
- Source Protection Region
- Source Protection Area
- Lower and Single Tier Municipality
- Upper Tier Municipality
- Waterbody
- Wetland

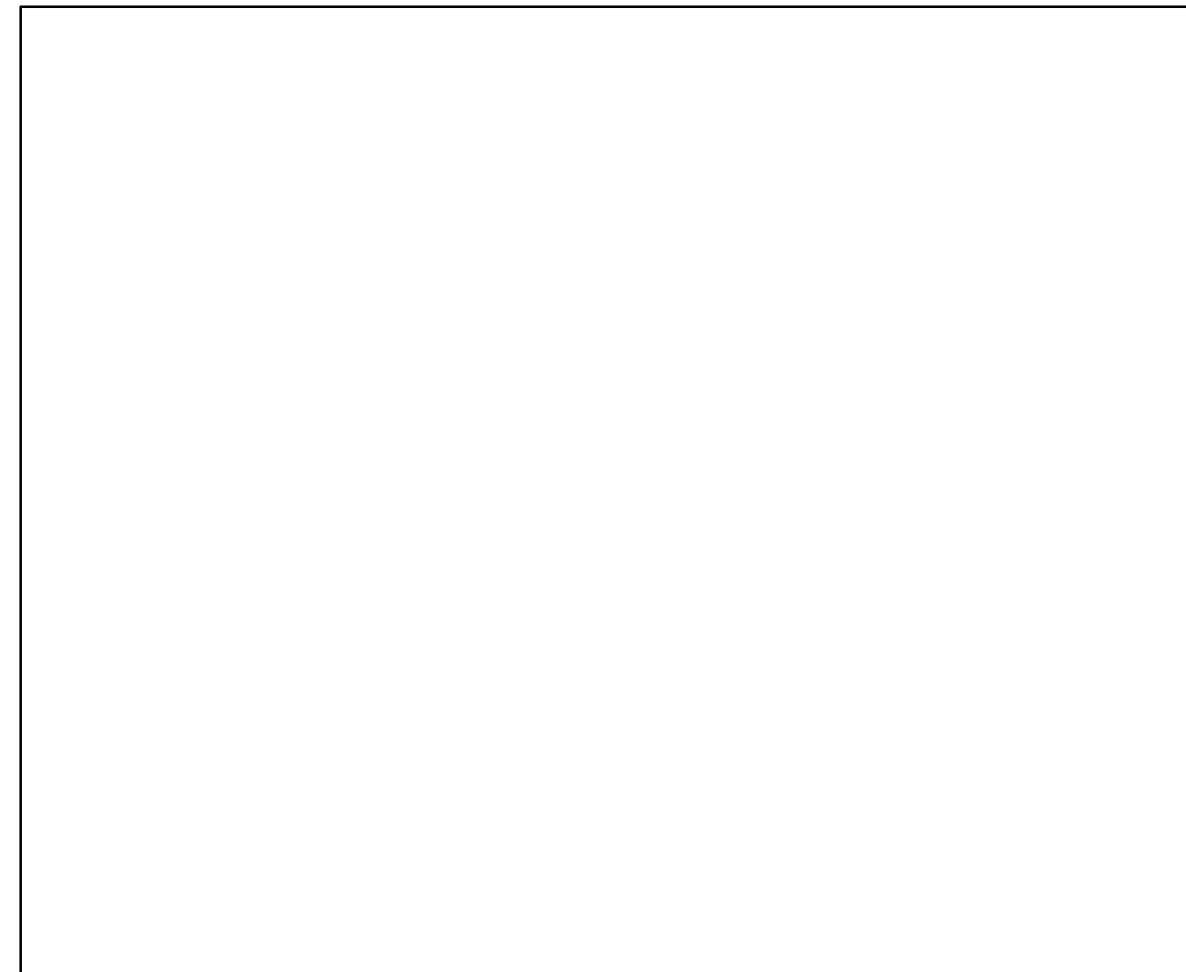
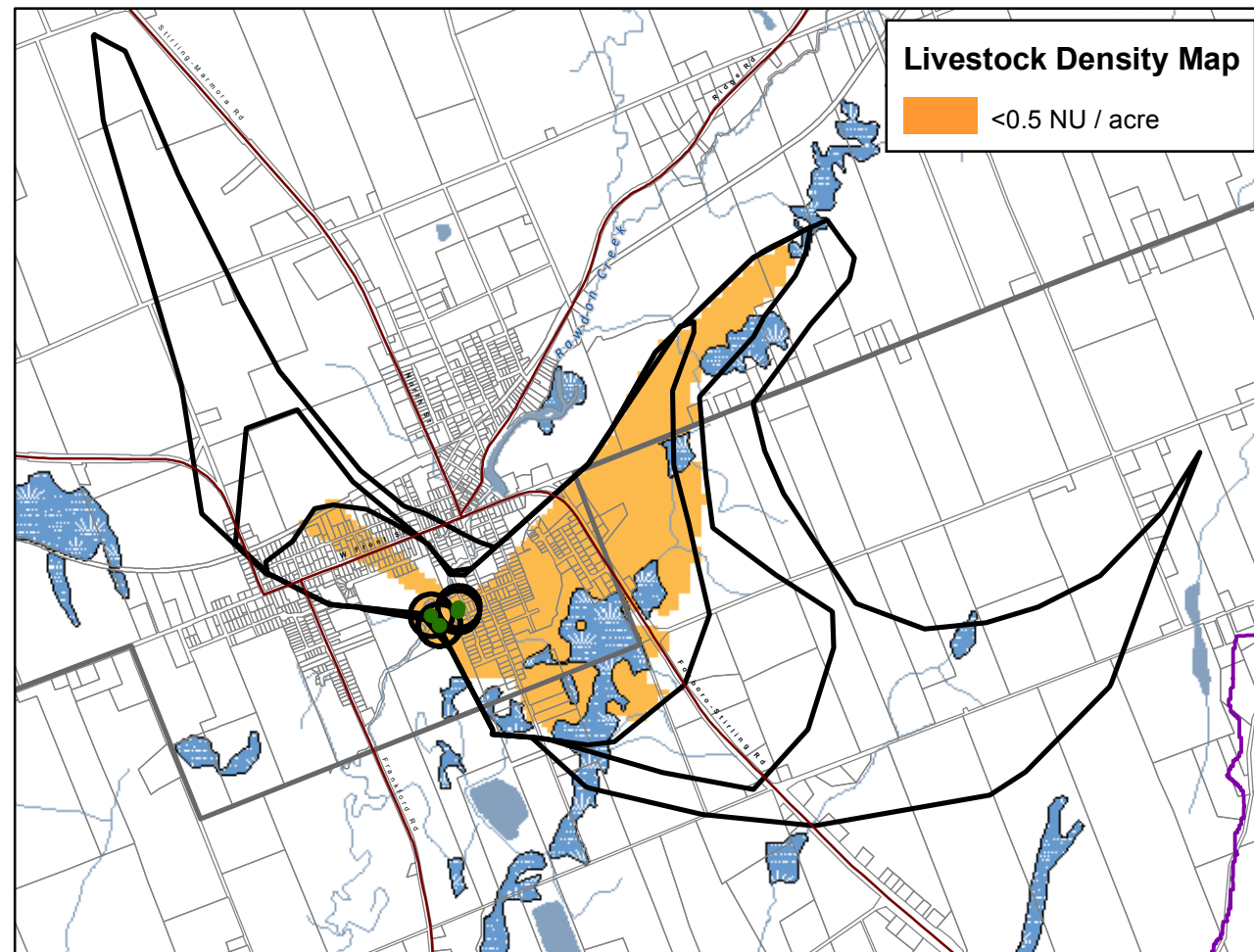
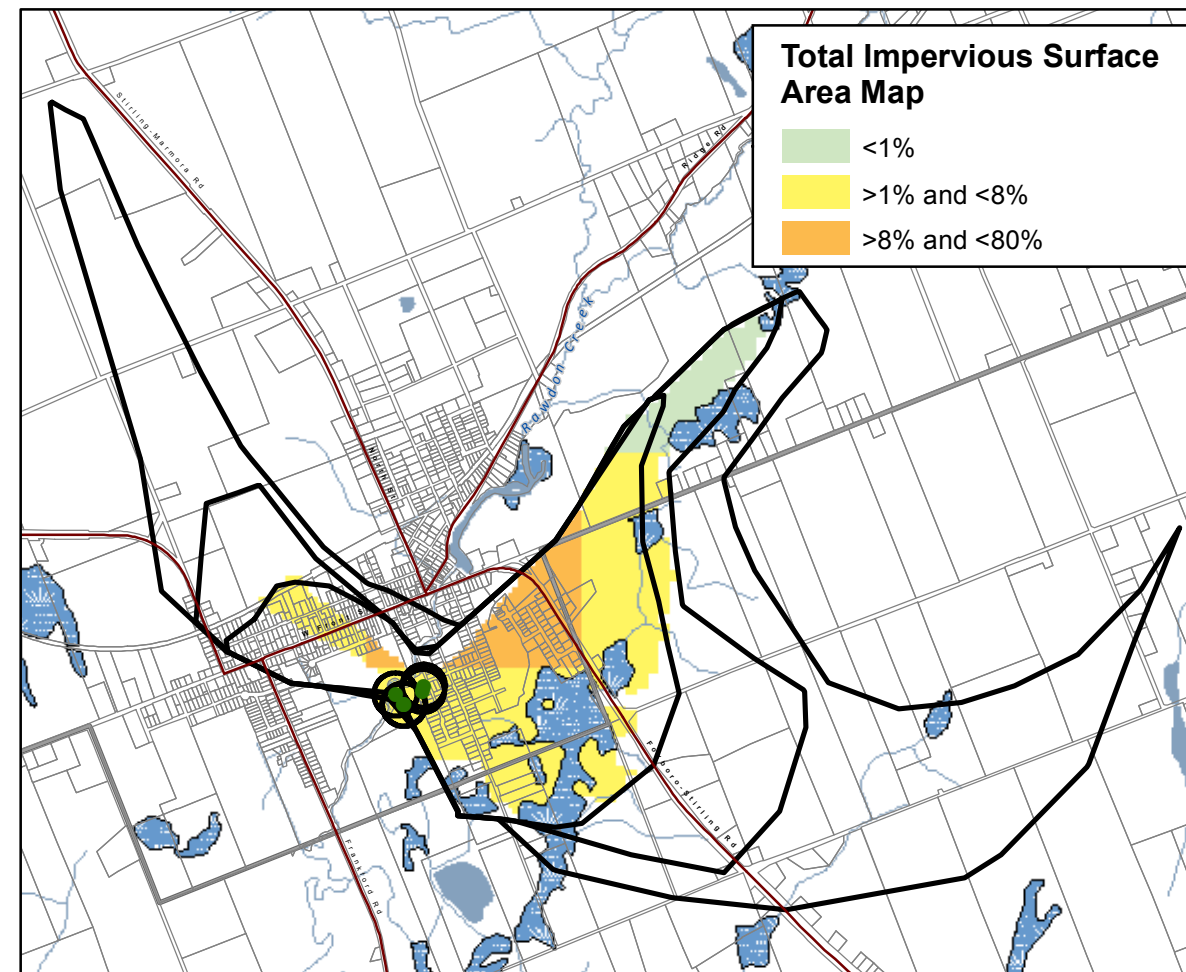
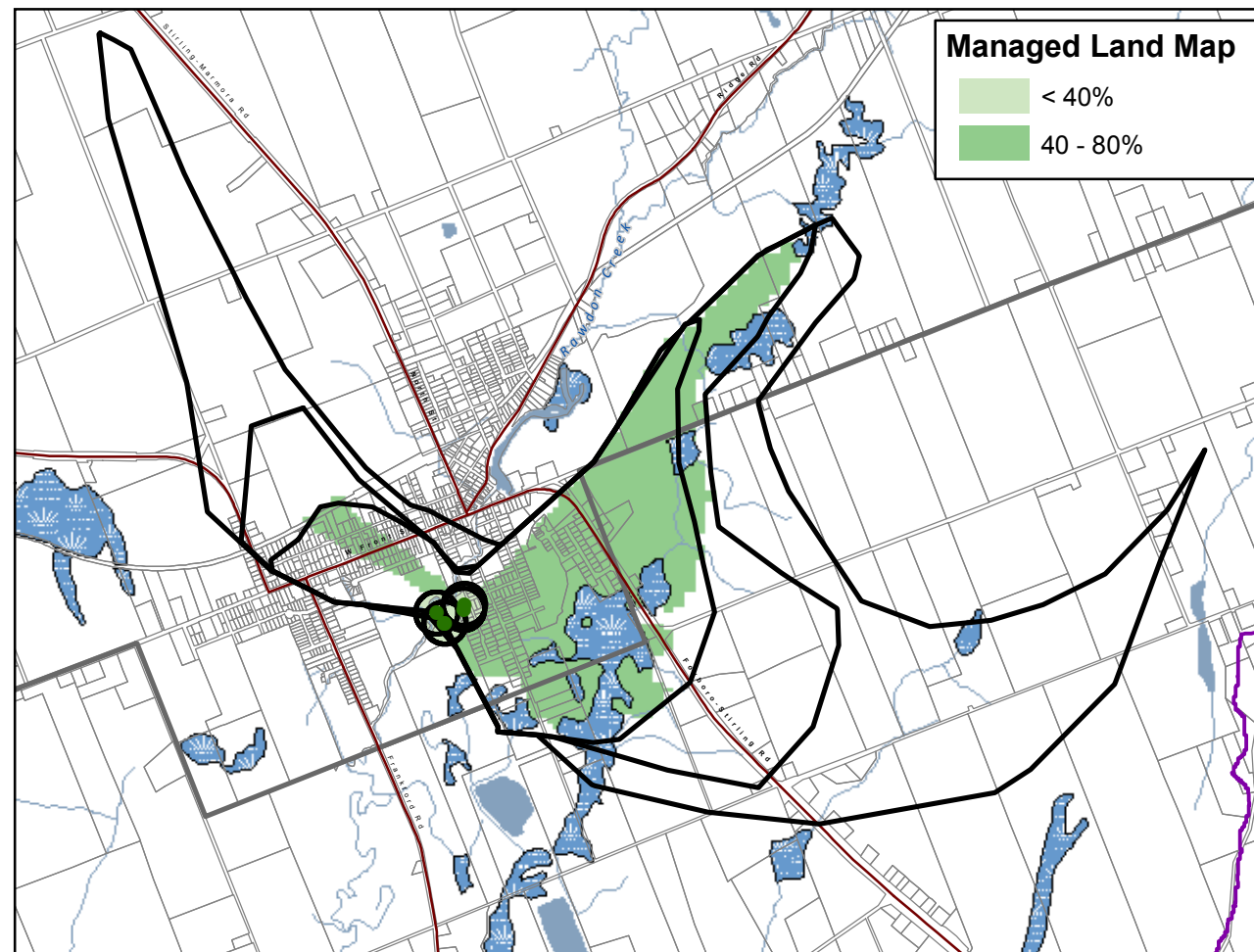


**Trent Conservation Coalition  
Source Protection Region**

[www.trentsourceprotection.on.ca](http://www.trentsourceprotection.on.ca)

This map has been prepared for the purpose of meeting the provincial requirements under the Clean Water Act, 2006. If it is proposed to use it for another purpose, it would be advisable to first consult with the responsible conservation authority.

PRODUCED BY Lower Trent Conservation on behalf of the Trent Conservation Coalition Source Protection Committee, March 2011 (Updated September 2019), with data supplied under licence by members of the Ontario Geospatial Data Exchange.

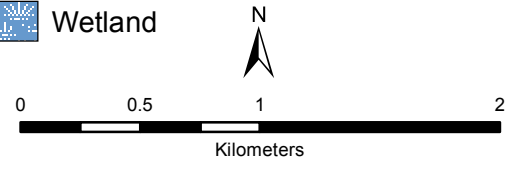


**Stirling Municipal Well System**  
**Lower Trent Source Protection Area**

**Areas for Significant, Moderate, & Low Drinking Water Threats (Chemical, Pathogen & DNAPL Threats)**

**Legend**

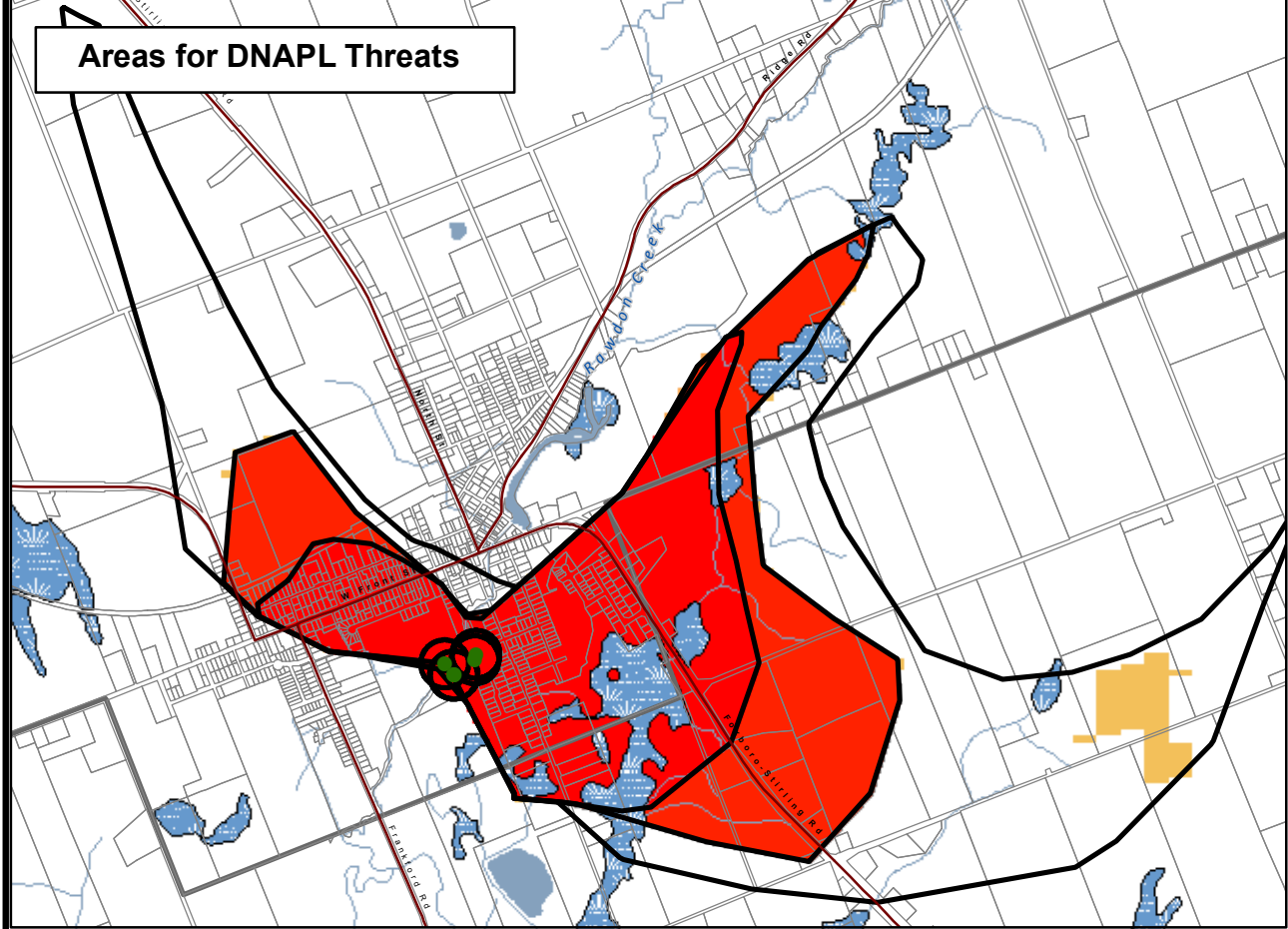
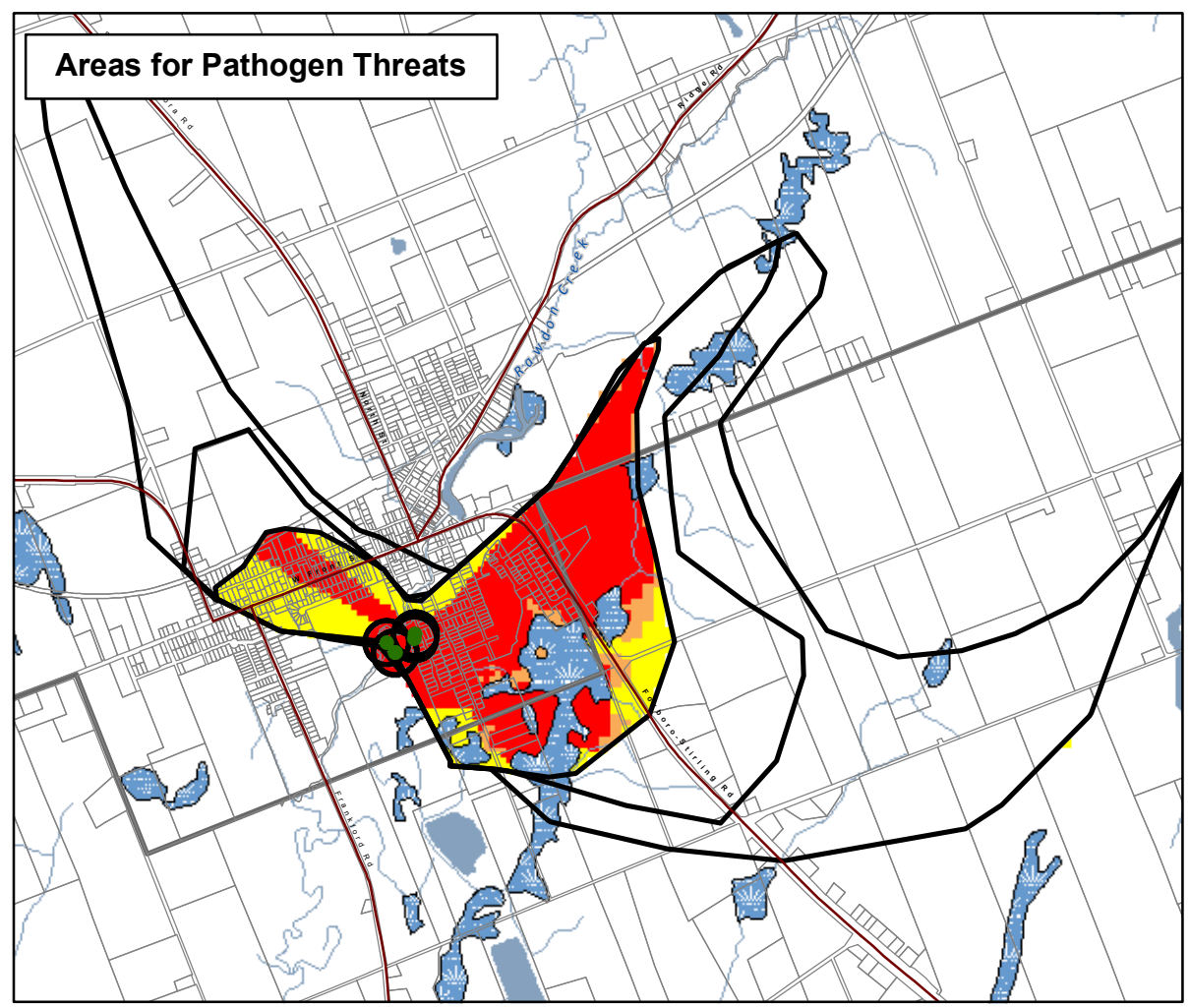
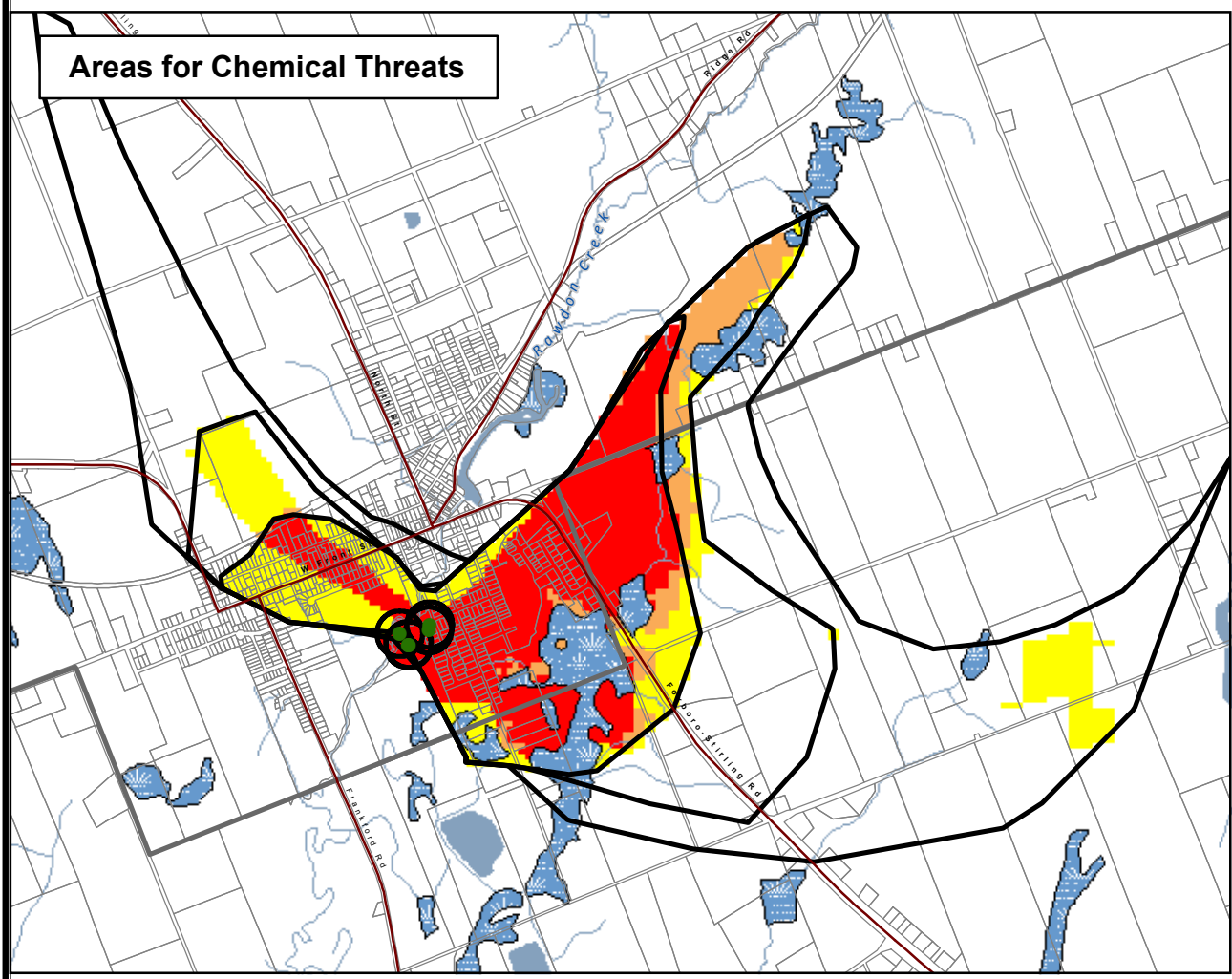
- Municipal Wells
- Railway
- Watercourse
- Main Road
- Highway
- Multi Lane Highway
- Property Boundary
- Source Protection Region
- Source Protection Areas
- Lower and Single Tier Municipality
- Upper Tier Municipality
- Wellhead Protection Areas
- Waterbody
- Wetland



**Trent Conservation Coalition Source Protection Region**  
[www.trentsourceprotection.on.ca](http://www.trentsourceprotection.on.ca)

This map has been prepared for the purpose of meeting the provincial requirements under the Clean Water Act, 2006. If it is proposed to use it for another purpose, it would be advisable to first consult with the responsible conservation authority.

PRODUCED BY Lower Trent Conservation on behalf of the Trent Conservation Coalition Source Protection Committee, March 2011 (Updated September 2019), with data supplied under licence by members of the Ontario Geospatial Data Exchange.



CHEMICAL THREATS			
Area	Provincial Table of Circumstances		
	Significant	Moderate	Low
	Table 01 (CW10S)	Table 03 (CW10M)	Table 06 (CW10L)
	Table 02 (CW8S)	Table 04 (CW8M)	Table 07 (CW8L)
	-	Table 05 (CW6M)	Table 08 (CW6L)

PATHOGEN THREATS			
Area	Provincial Table of Circumstances		
	Significant	Moderate	Low
	Table 12 (PW10S)	Table 13 (PW10M)	-
	-	Table 14 (PW8M)	Table 15 (PW8L)
	-	-	Table 16 (PW6L)

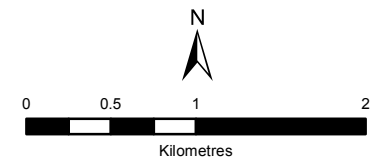
DNAPL THREATS			
Area	Provincial Table of Circumstances		
	Significant	Moderate	Low
	Table 9 (DWAS)	-	-
	-	Table 10 (DW6M)	Table 11 (DW6L)

These tables indicate where chemical, pathogen, and DNAPL (dense non-aqueous phase liquid) threats are (or would be for future activities) significant, moderate, or low in the Wellhead Protection Area. The table numbers and codes refer to the Table of Circumstances that list the circumstances under which these threats can be significant, moderate, or low. The information that appears in the Tables of Circumstances can be generated by searching the Source Water Protection Threats Tool, accessible via <http://swpip.ca/>

**Stirling Municipal Well System  
Lower Trent Source Protection Area  
Wellhead Protection Area E:  
Vulnerability & Areas For Threats**

**Legend**

- Municipal Wells
- Railway
- Watercourse
- Main Road
- Highway
- Multi Lane Highway
- Property Boundary
- Source Protection Region
- Source Protection Areas
- Lower and Single Tier Municipality
- Upper Tier Municipality
- Wellhead Protection Areas
- Waterbody
- Wetland



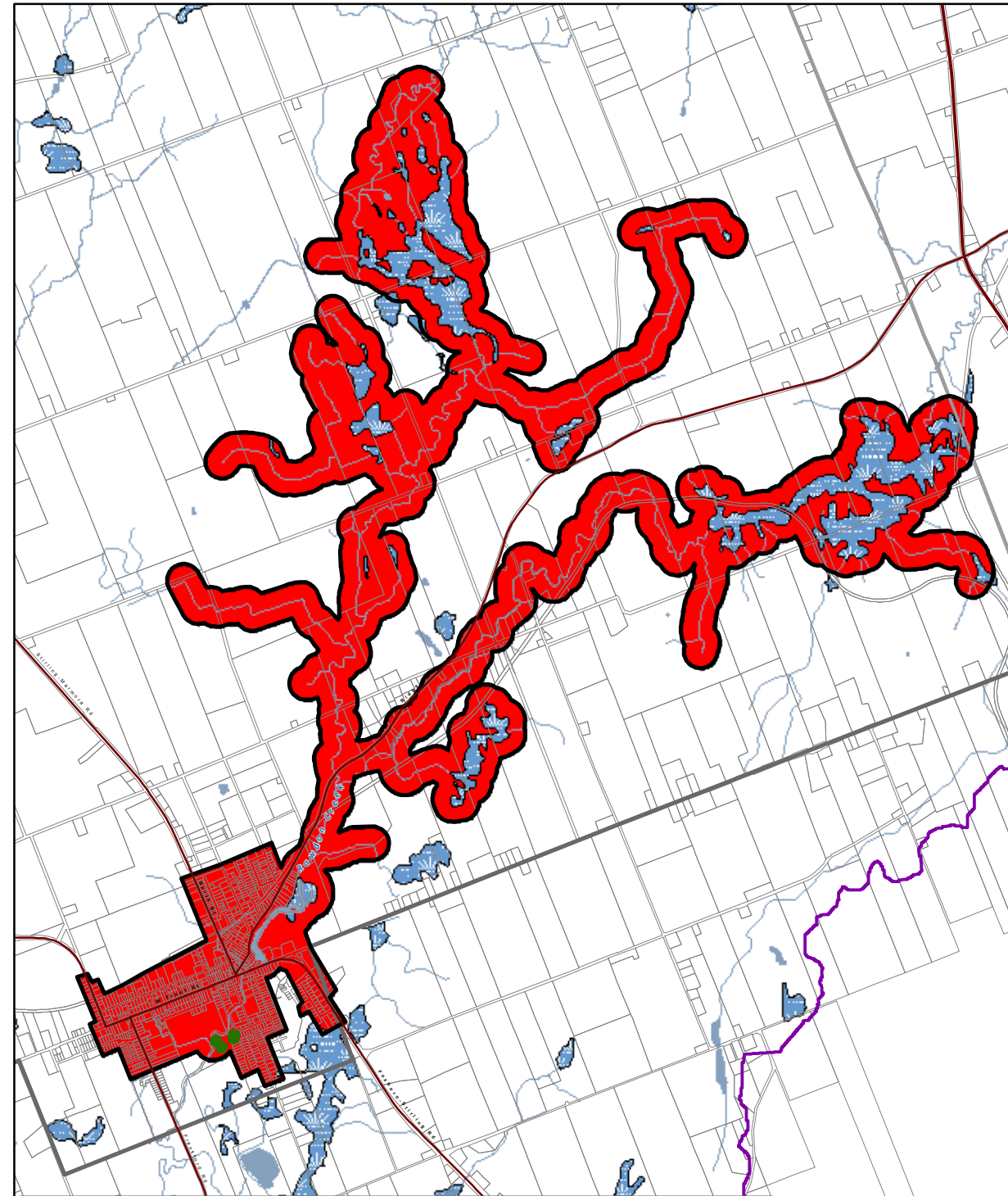
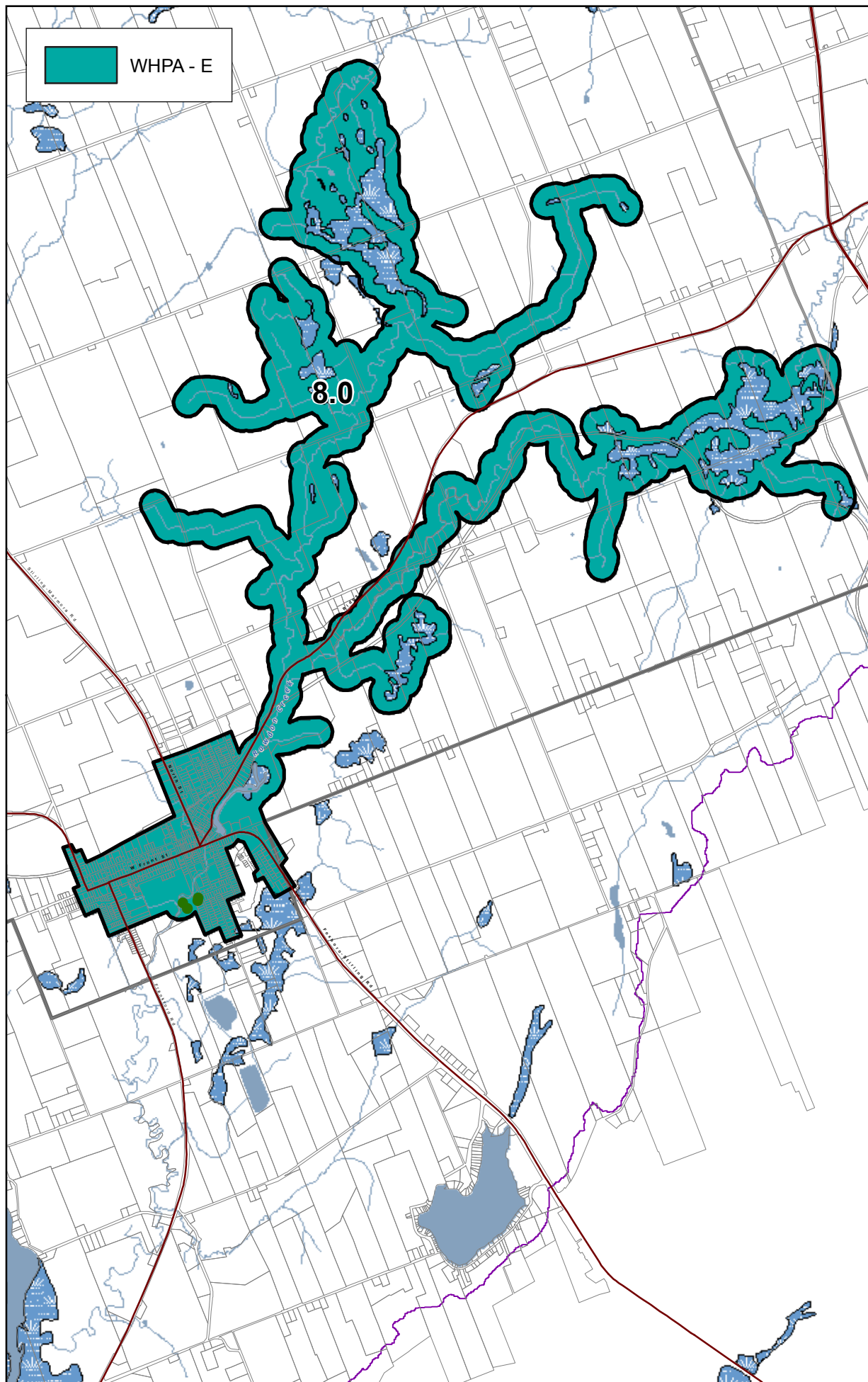
**Trent Conservation Coalition  
Source Protection Region**

[www.trentsourceprotection.on.ca](http://www.trentsourceprotection.on.ca)

This map has been prepared for the purpose of meeting the provincial requirements under the Clean Water Act, 2006. If it is proposed to use it for another purpose, it would be advisable to first consult with the responsible conservation authority.

PRODUCED BY Lower Trent Conservation on behalf of the Trent Conservation Coalition Source Protection Committee, March 2011 (Updated September 2019), with data supplied under licence by members of the Ontario Geospatial Data Exchange.

NOTE: Waterbodies and watercourses located within the extent of a wellhead protection area are included in that area.



CHEMICAL THREATS			
Area	Provincial Table of Circumstances		
	Significant	Moderate	Low
	Table 22 (CIPZWE8S)	Table 26 (CIPZWE8M)	Table 34 (CIPZWE8L)

PATHOGEN THREATS			
Area	Provincial Table of Circumstances		
	Significant	Moderate	Low
	Table 48 (PIPZWE8S)	Table 52 (PIPZWE8M)	Table 61 (PIPZWE8L)

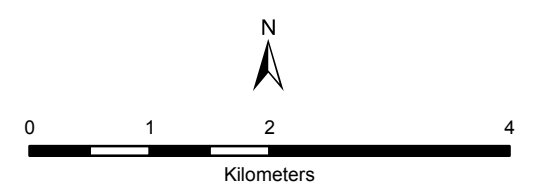
These tables indicate where chemical, pathogen, and DNAPL (dense non-aqueous phase liquid) threats are (or would be for future activities) significant, moderate, or low in the Wellhead Protection Area. The table numbers and codes refer to the Table of Circumstances that list the circumstances under which these threats can be significant, moderate, or low. The information that appears in the Tables of Circumstances can be generated by searching the Source Water Protection Threats Tool, accessible via <http://swpip.ca/>

**Stirling Municipal Well System**  
**Lower Trent Source Protection Area**

**Managed Land, Livestock Density & Total Impervious Surface Area - WHPA-E**

**Legend**

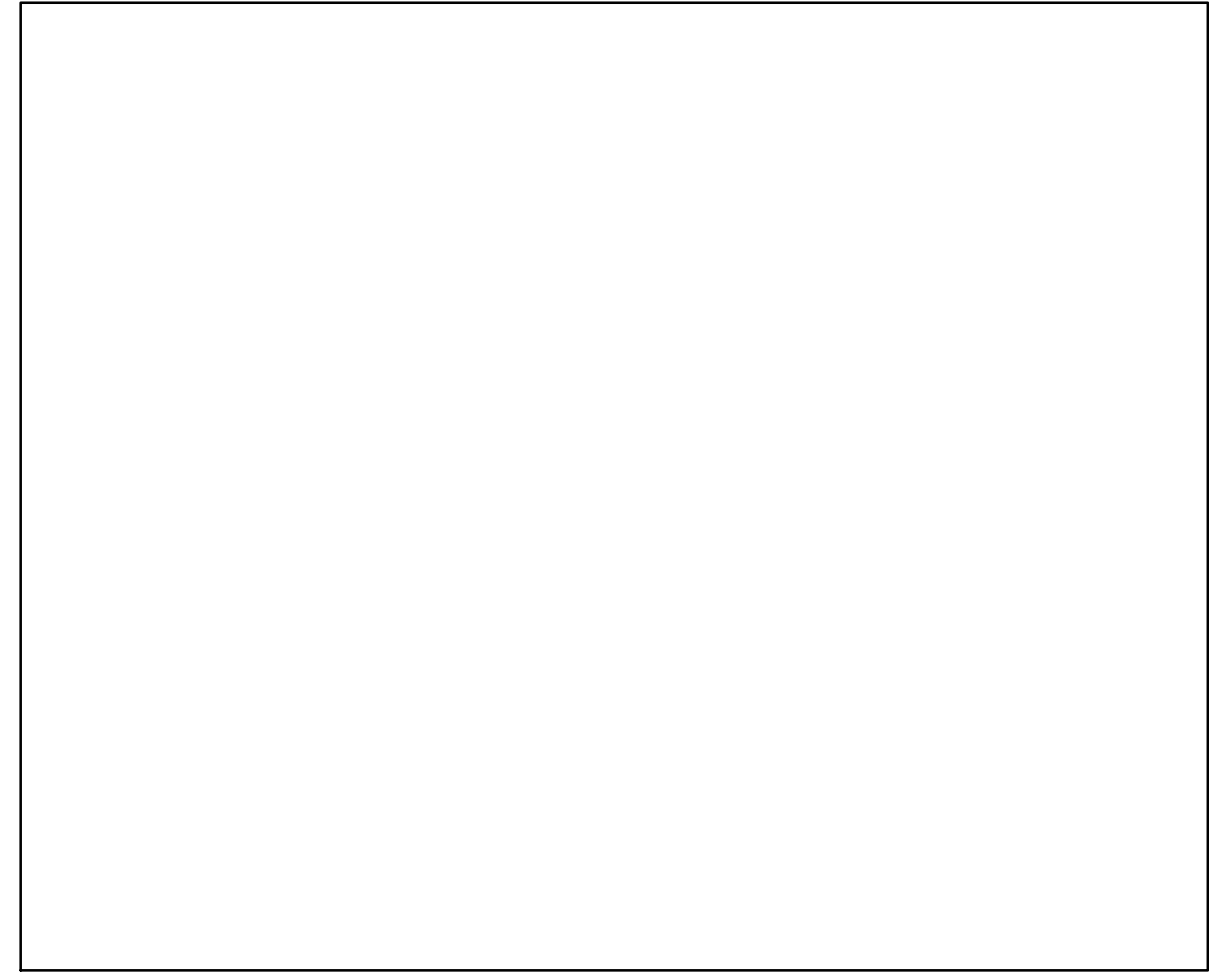
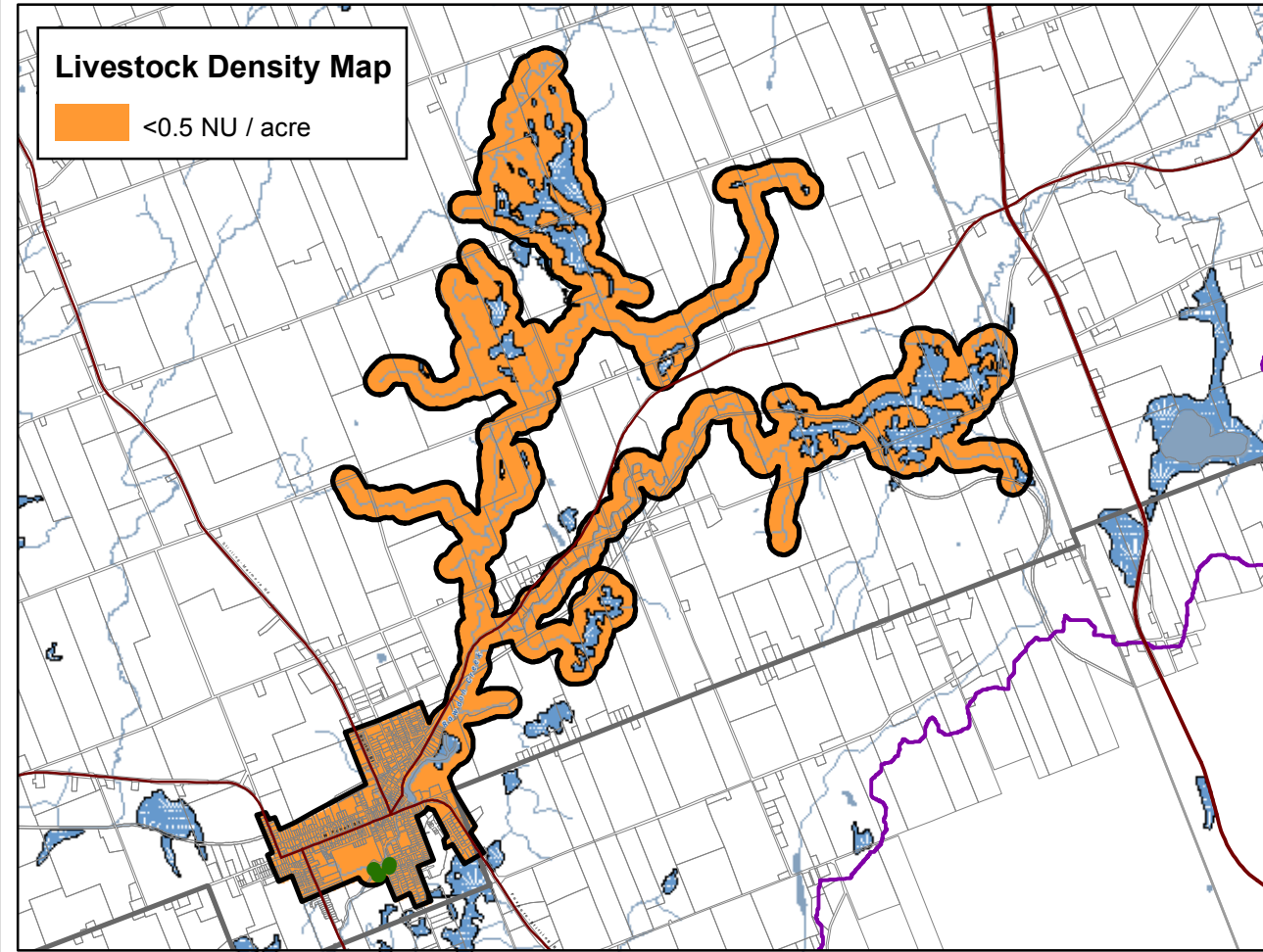
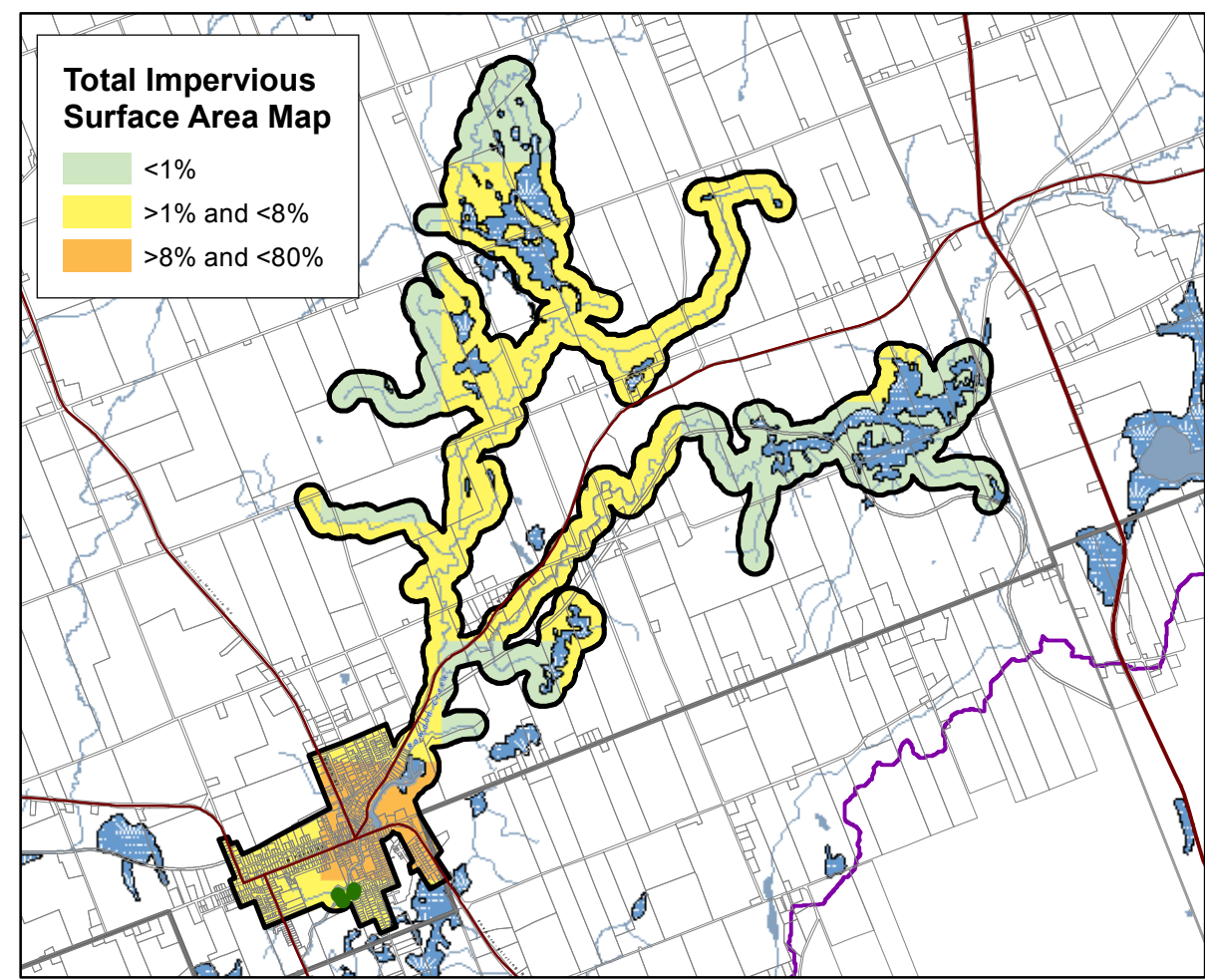
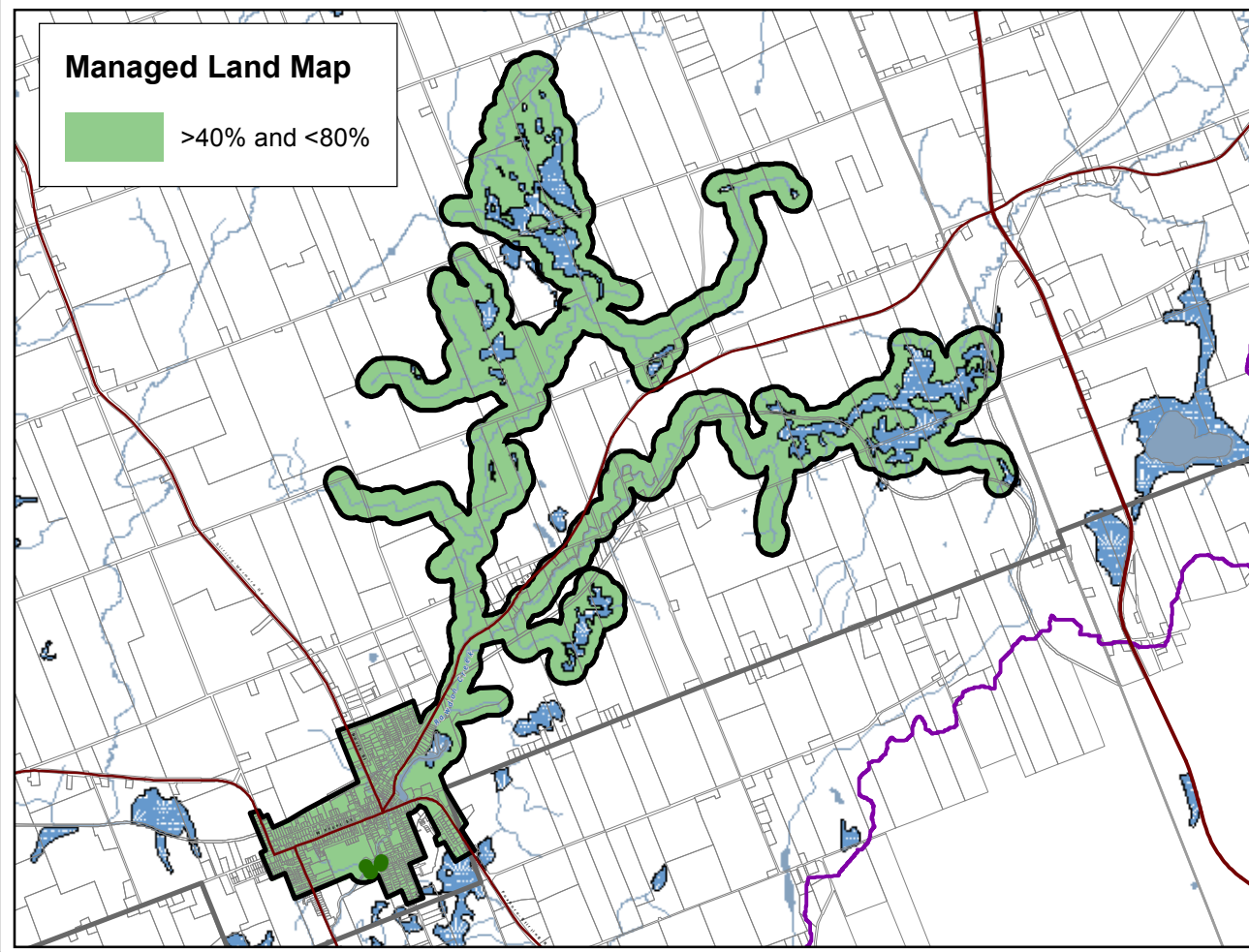
- Municipal Wells
- Railway
- Watercourse
- Main Road
- Highway
- Multi Lane Highway
- Property Boundary
- Source Protection Region
- Source Protection Area
- Lower and Single Tier Municipality
- Upper Tier Municipality
- Wellhead Protection Areas
- Waterbody
- Wetland



**Trent Conservation Coalition**  
**Source Protection Region**  
[www.trentsourceprotection.on.ca](http://www.trentsourceprotection.on.ca)

This map has been prepared for the purpose of meeting the provincial requirements under the Clean Water Act, 2006. If it is proposed to use it for another purpose, it would be advisable to first consult with the responsible conservation authority.

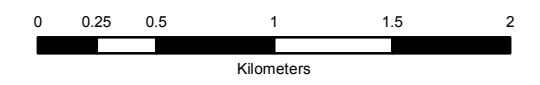
PRODUCED BY Lower Trent Conservation on behalf of the Trent Conservation Coalition Source Protection Committee, March 2011 (Updated September 2019), with data supplied under licence by members of the Ontario Geospatial Data Exchange.



**Stirling Municipal Well System**  
**Lower Trent Source Protection Area**  
**Issue Contributing Area:**  
**E. Coli Water Quality Issue**

**Legend**

- Municipal Wells
- Railway
- Watercourse
- Main Road
- Highway
- Multi Lane Highway
- Property Boundary
- Source Protection Region
- Source Protection Area
- Upper Tier Municipality
- Lower and Single Tier Municipality
- Wellhead Protection Area
- Waterbody
- Wetland



**Trent Conservation Coalition**  
**Source Protection Region**  
[www.trentsourceprotection.on.ca](http://www.trentsourceprotection.on.ca)

This map has been prepared for the purpose of meeting the provincial requirements under the Clean Water Act, 2006. If it is proposed to use it for another purpose, it would be advisable to first consult with the responsible conservation authority.

PRODUCED BY Lower Trent Conservation on behalf of the Trent Conservation Coalition Source Protection Committee, March 2011 (Updated September 2019), with data supplied under licence by members of the Ontario Geospatial Data Exchange.

