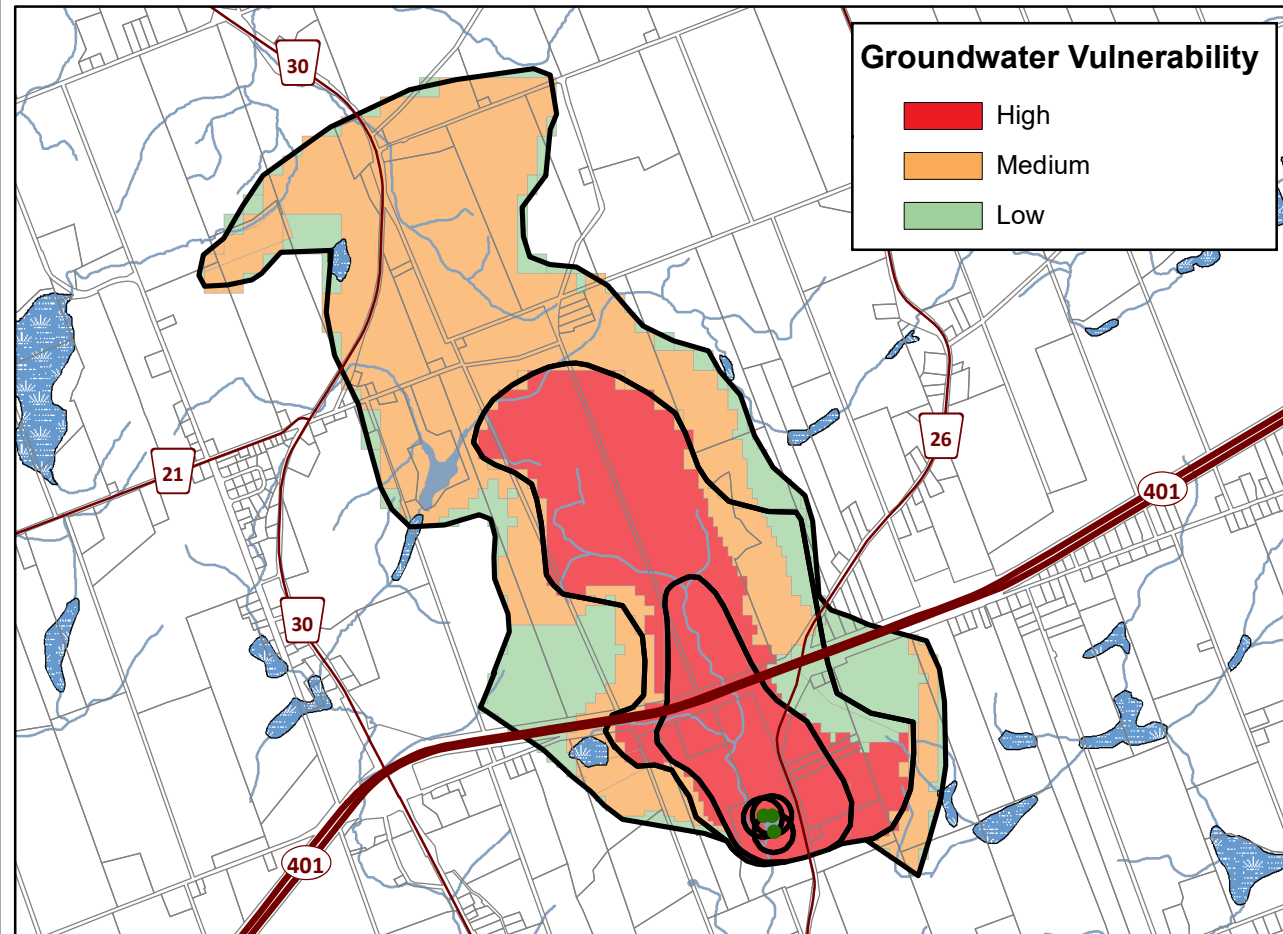
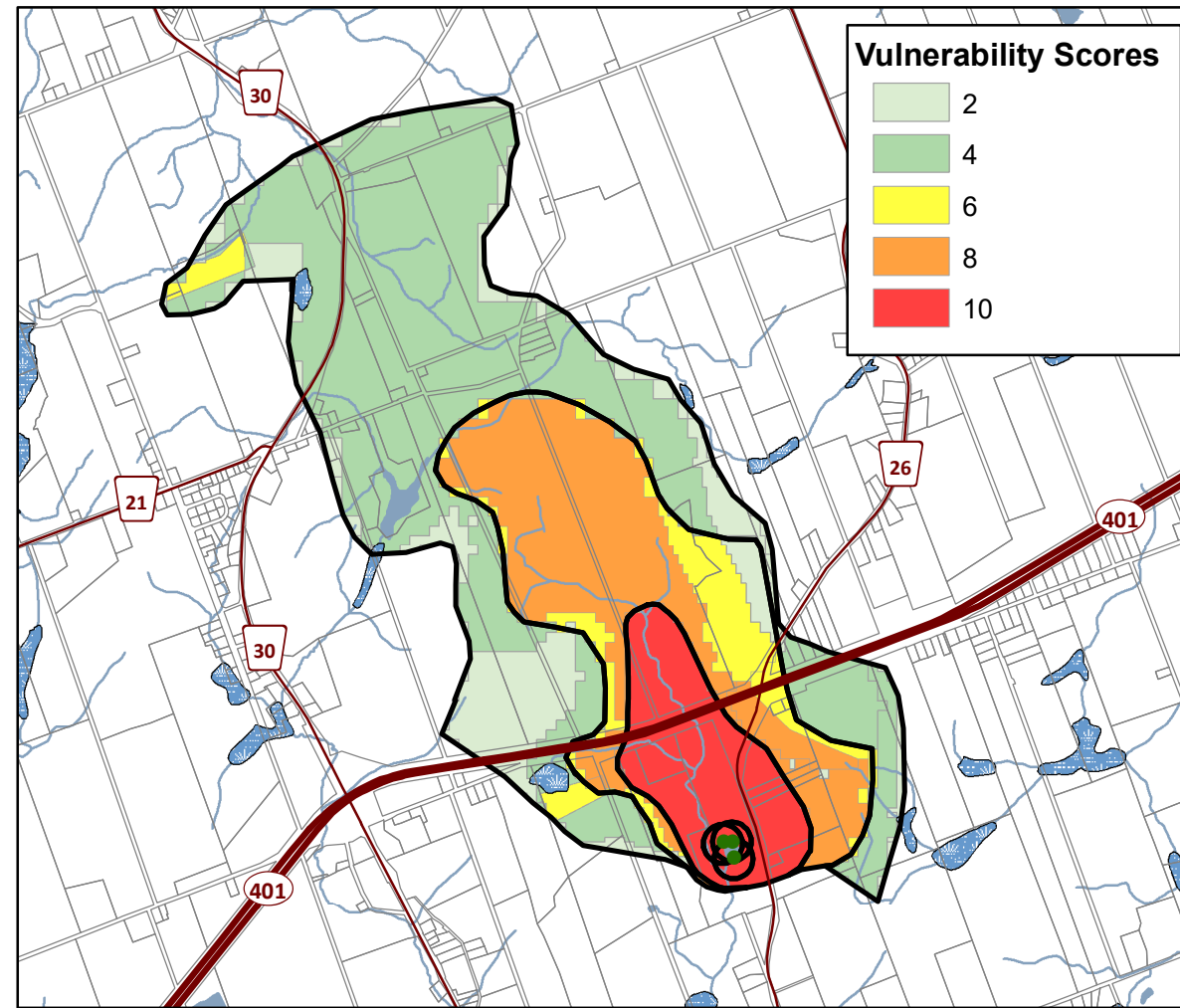
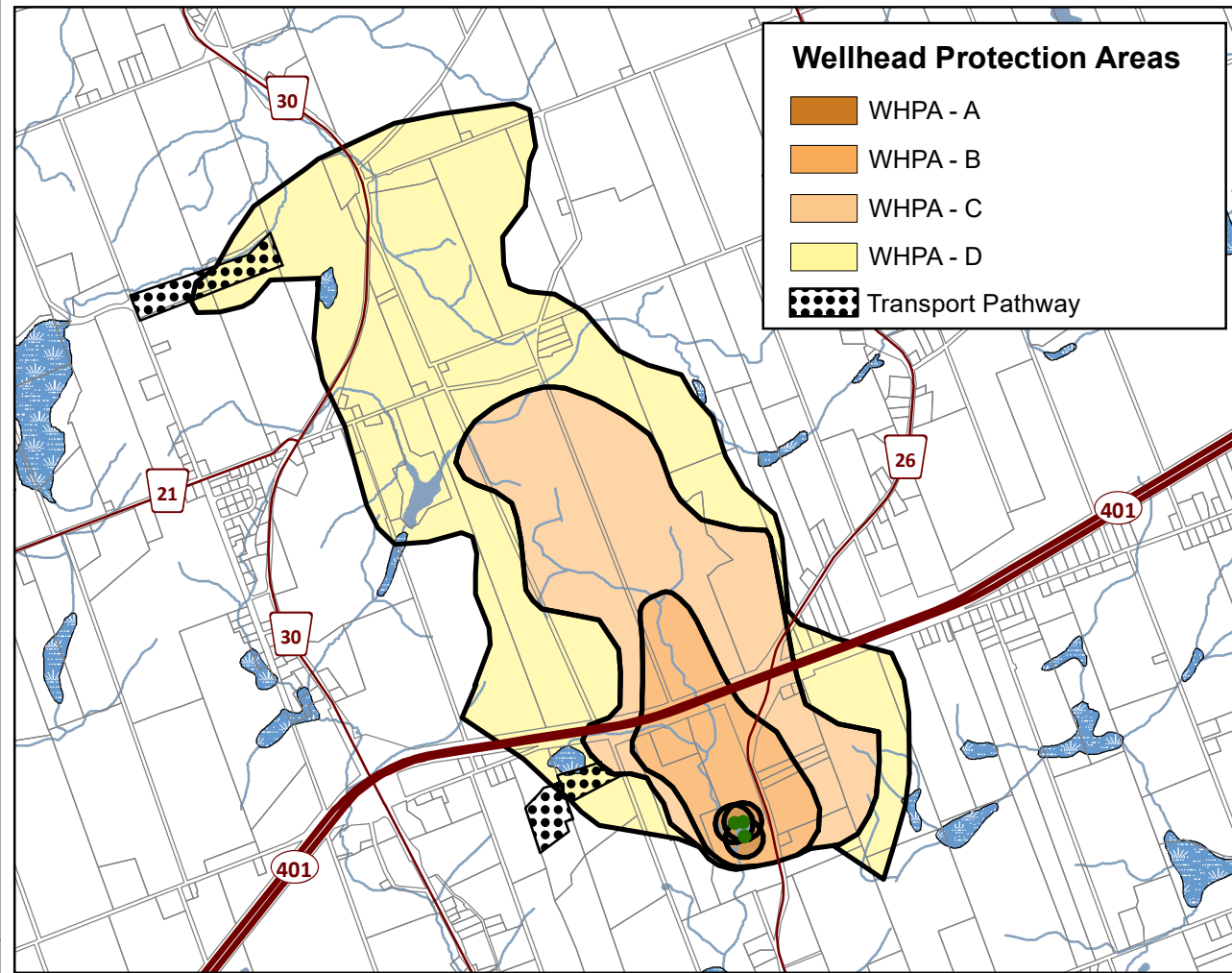
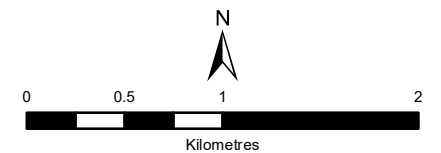


**Brighton
Municipal Well System
Lower Trent
Source Protection Area
Wellhead Protection Areas
& Vulnerability**



Legend

- Municipal Wells
- Railway
- Watercourse
- Main Road
- Highway
- Multi Lane Highway
- Source Protection Region
- Source Protection Areas
- Upper Tier Municipality
- Lower and Single Tier Municipality
- Property Boundary
- Wellhead Protection Areas
- Waterbody
- Wetland

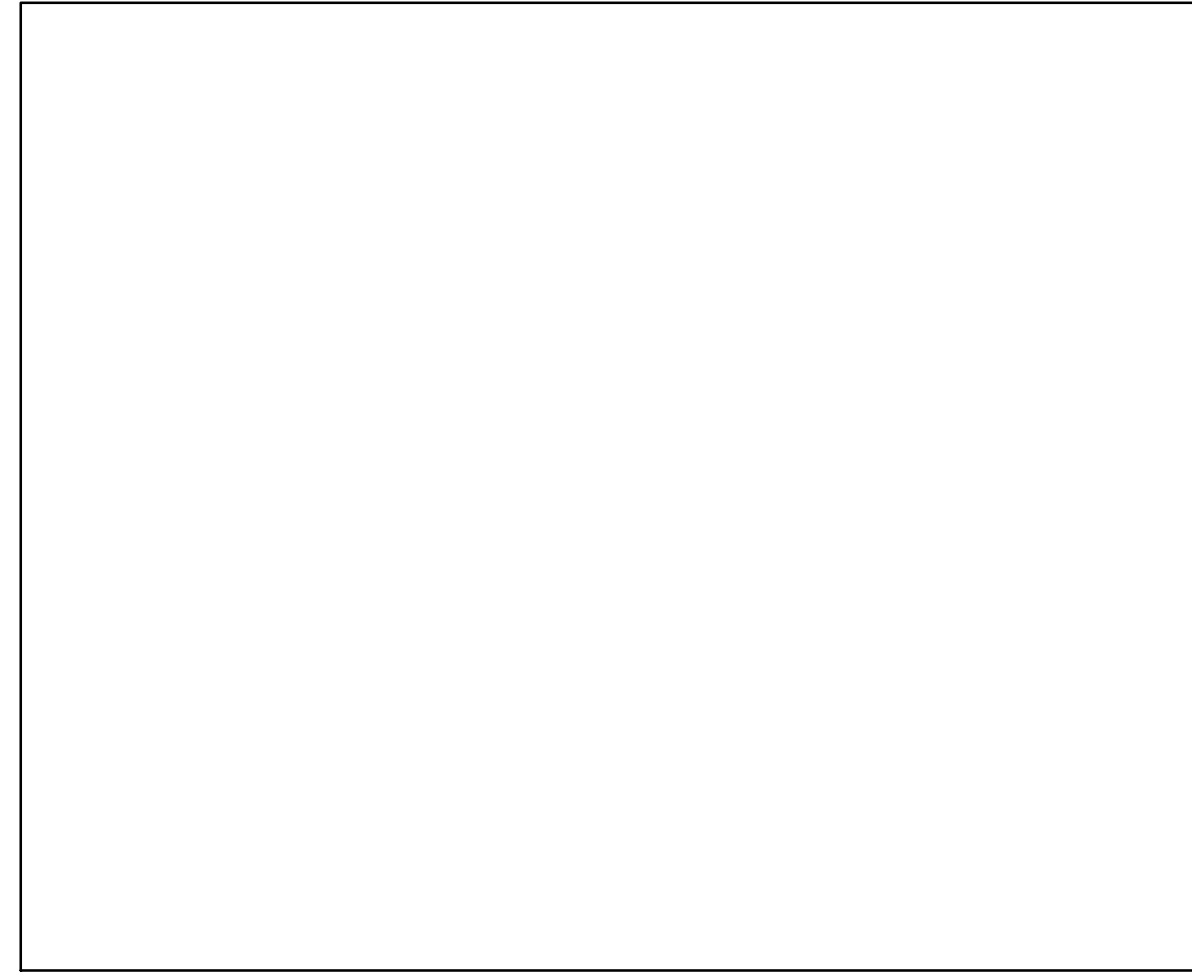
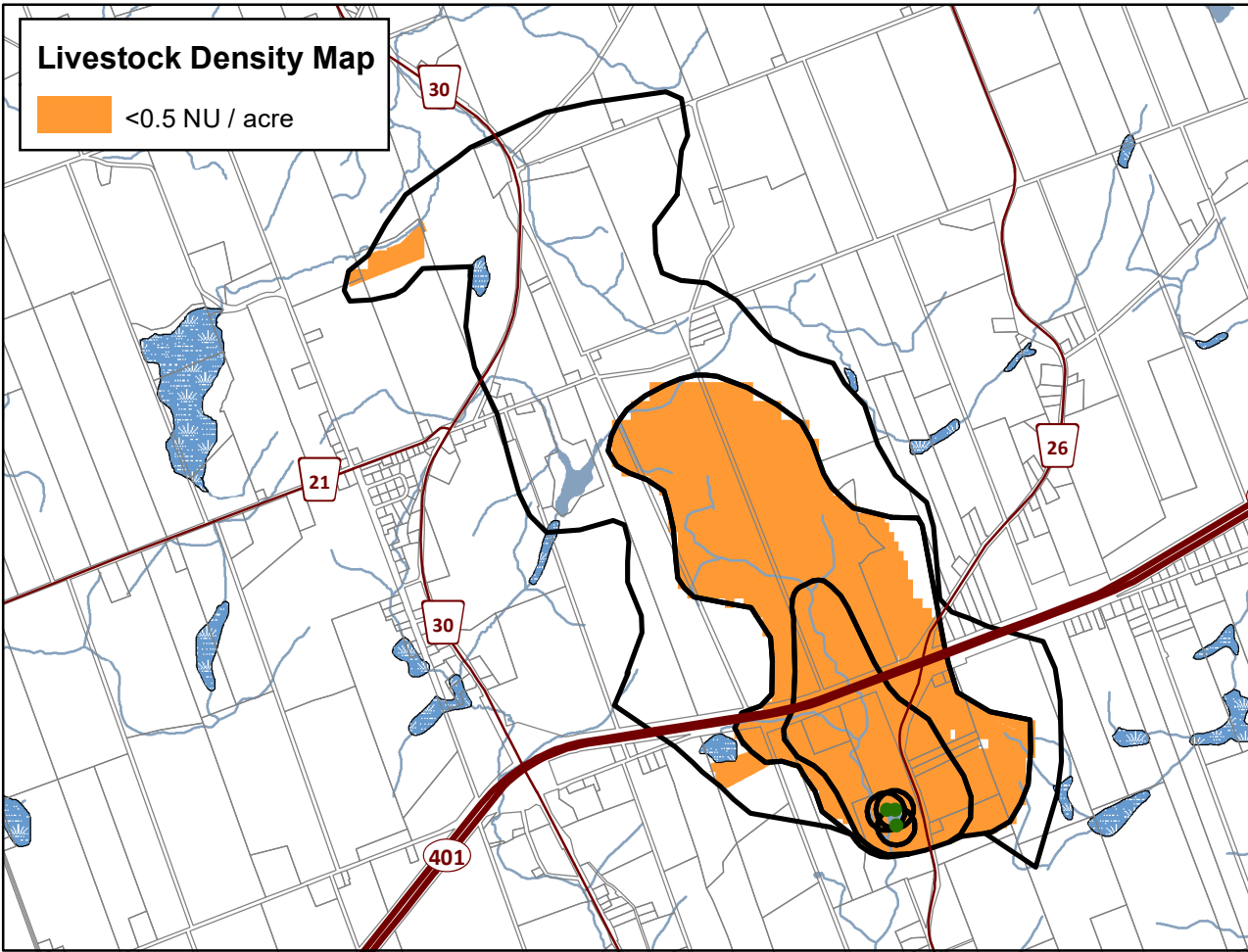
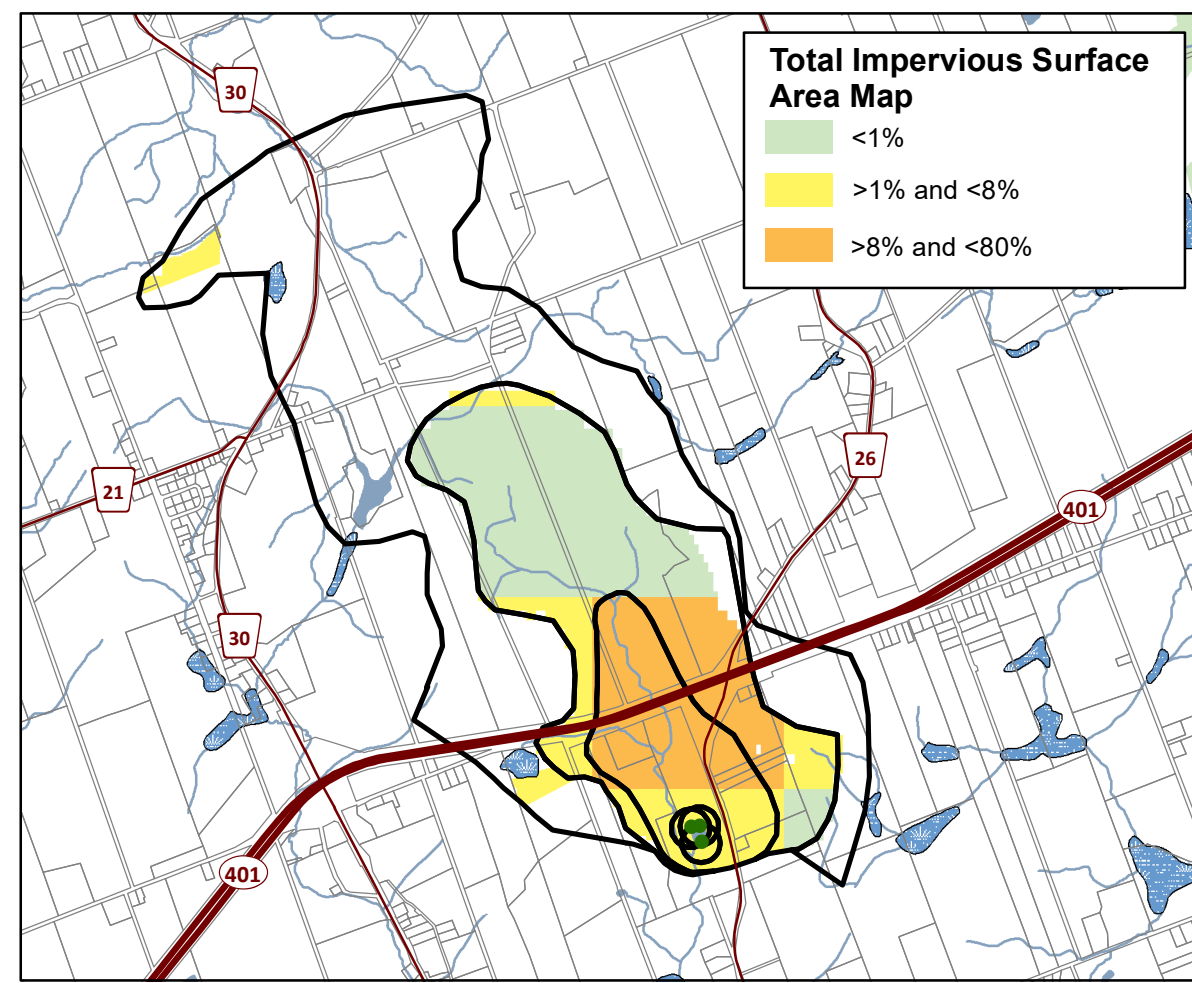
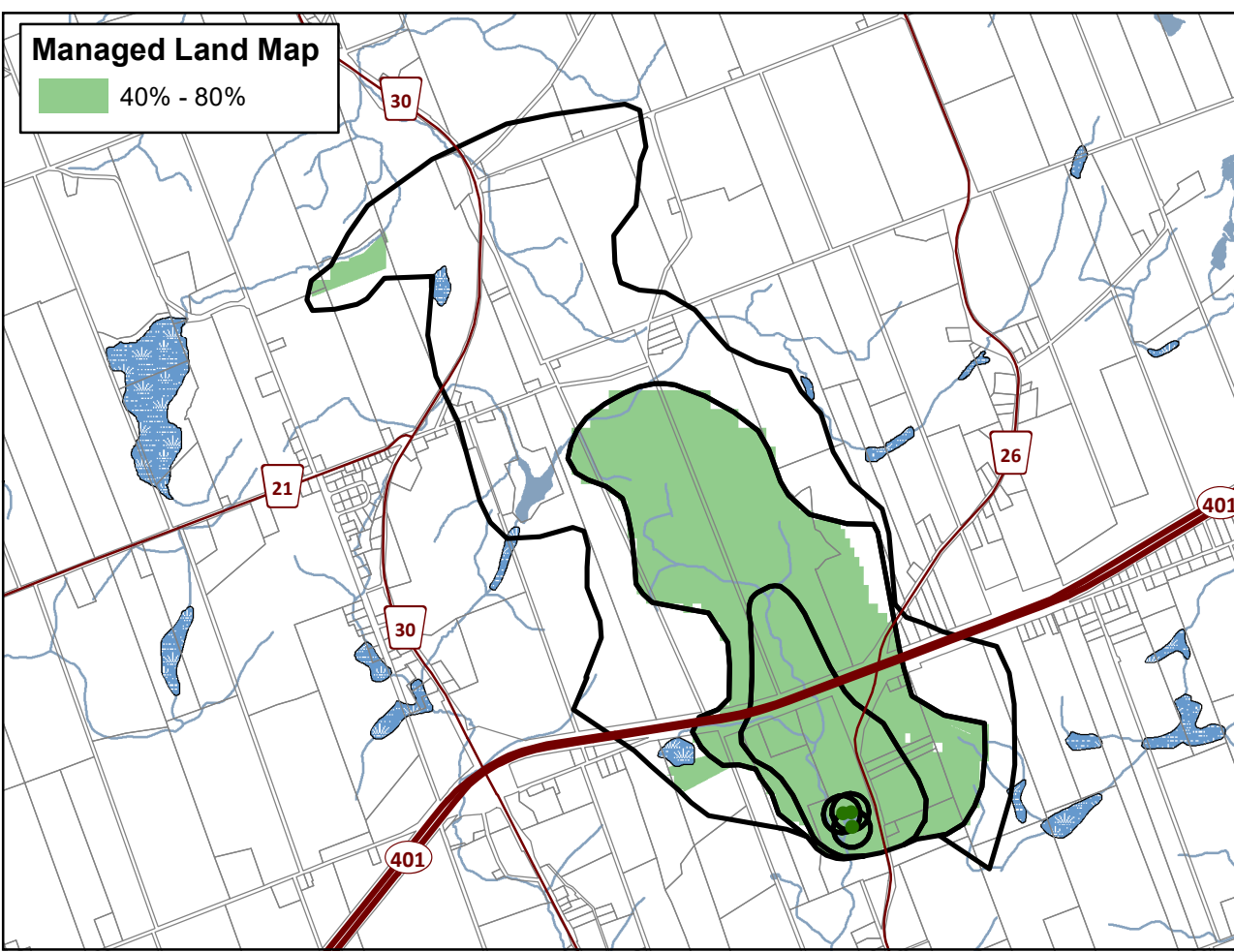


**Trent Conservation Coalition
Source Protection Region**
www.trentsourceprotection.on.ca

This map has been prepared for the purpose of meeting the provincial requirements under the Clean Water Act, 2006. If it is proposed to use it for another purpose, it would be advisable to first consult with the responsible conservation authority.

PRODUCED BY Lower Trent Conservation on behalf of the Trent Conservation Coalition Source Protection Committee, March 2011 (Updated July 2016), with data supplied under licence by members of the Ontario Geospatial Data Exchange.

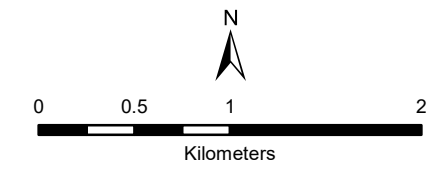
NOTE: Waterbodies and watercourses located within the extent of a wellhead protection area are included in that area.



Brighton Municipal Well System
Lower Trent Source Protection Area
Managed Land, Livestock Density & Total Impervious Surface Area

Legend

- Municipal Wells
- Railway
- Watercourse
- Main Road
- Highway
- Multi Lane Highway
- Source Protection Region
- Source Protection Area
- Upper Tier Municipality
- Lower and Single Tier Municipality
- Property Boundary
- Wellhead Protection Areas
- Waterbody
- Wetland



Trent Conservation Coalition Source Protection Region
www.trentsourceprotection.on.ca

This map has been prepared for the purpose of meeting the provincial requirements under the Clean Water Act, 2006. If it is proposed to use it for another purpose, it would be advisable to first consult with the responsible conservation authority.

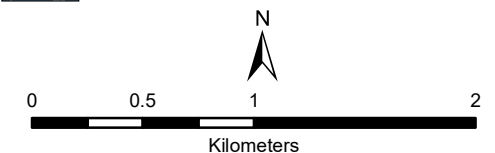
PRODUCED BY Lower Trent Conservation on behalf of the Trent Conservation Coalition Source Protection Committee, March 2011 (Updated July 2016), with data supplied under licence by members of the Ontario Geospatial Data Exchange.

Brighton Municipal Well System Lower Trent Source Protection Area

Areas for Significant, Moderate, & Low Drinking Water Threats (Chemical, Pathogen & DNAPL Threats)

Legend

- Municipal Wells
- Railway
- Watercourse
- Main Road
- Highway
- Multi Lane Highway
- Property Boundary
- Source Protection Region
- Source Protection Areas
- Lower and Single Tier Municipality
- Upper Tier Municipality
- Wellhead Protection Areas
- Waterbody
- Wetland

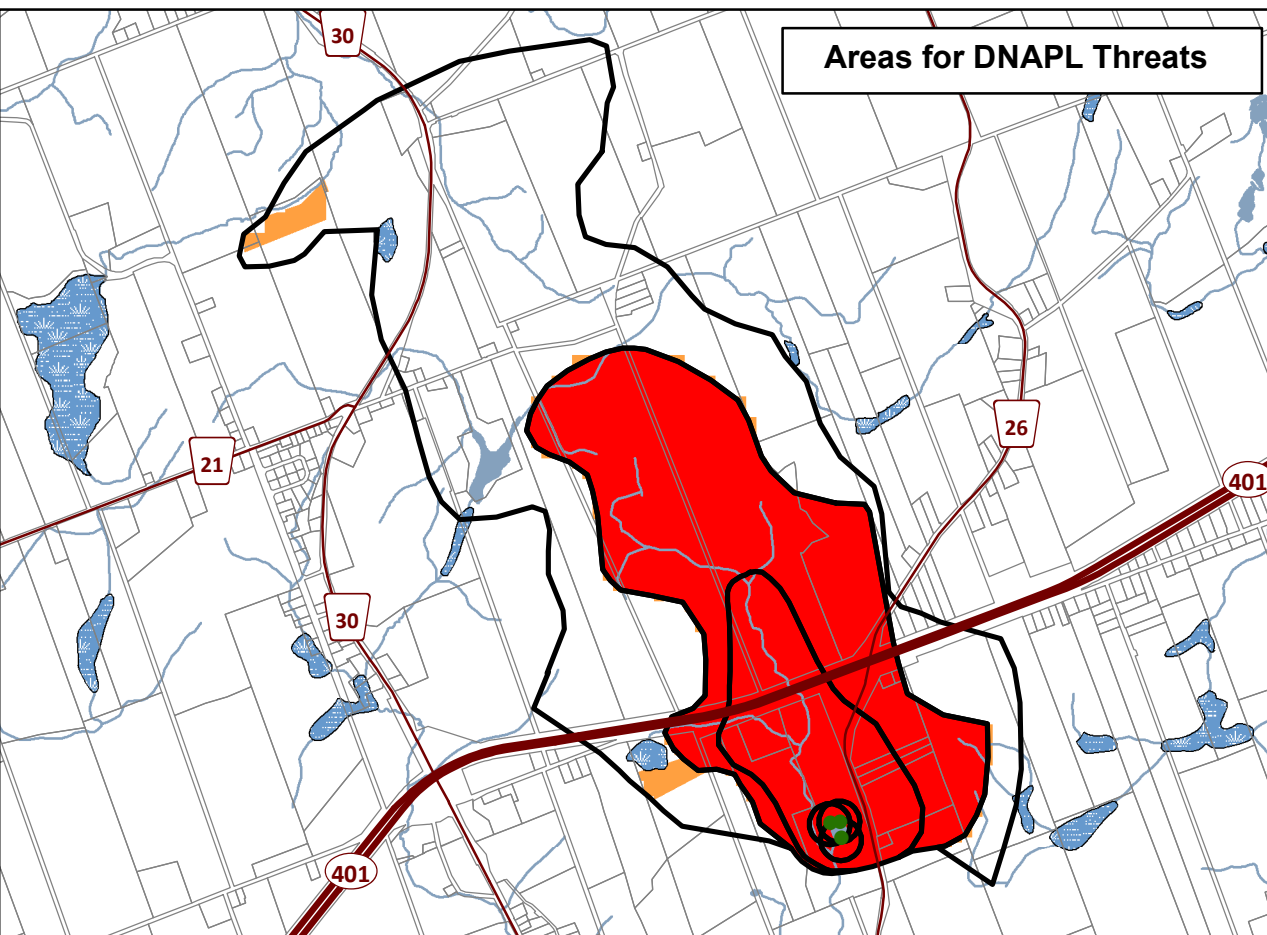
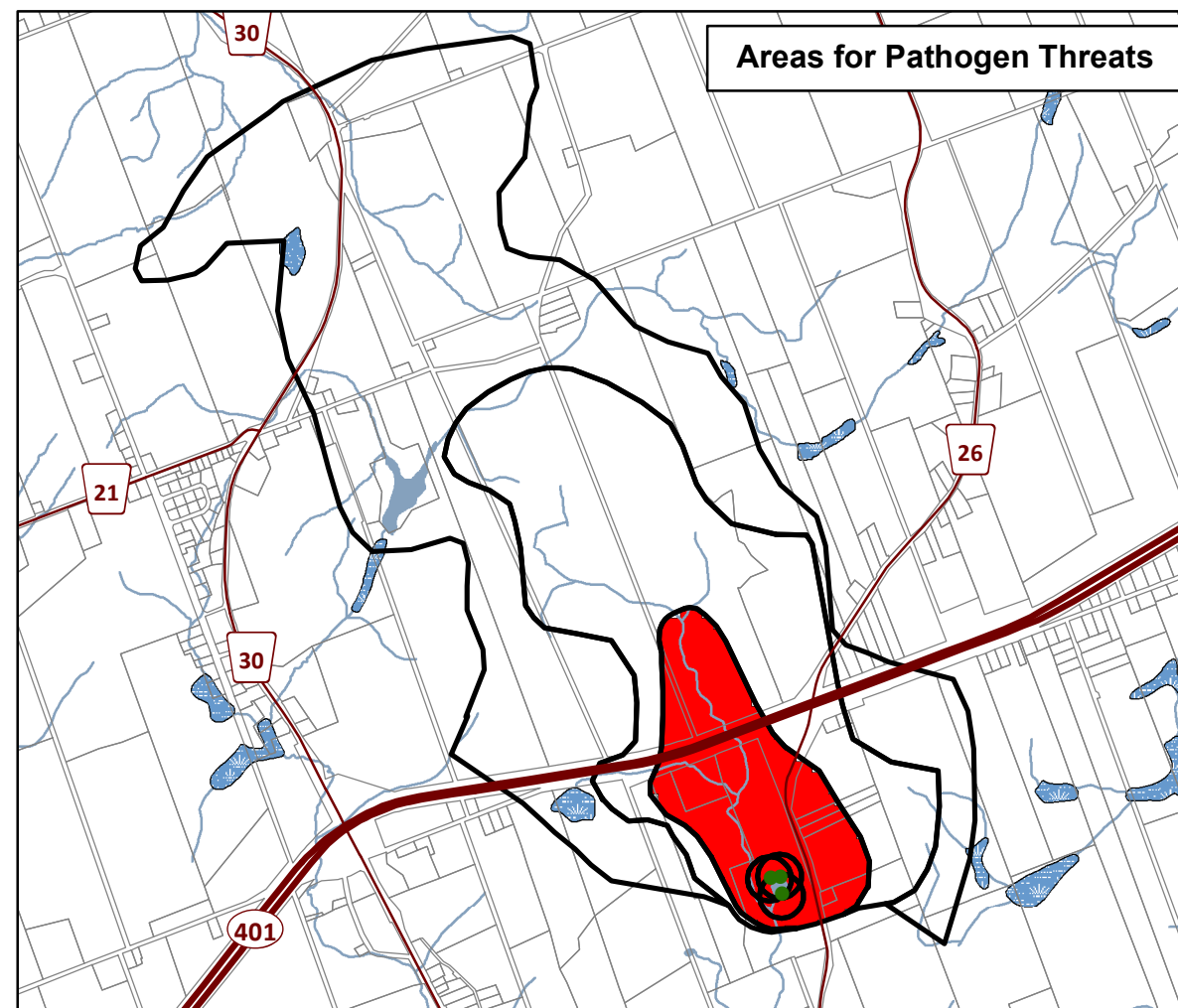
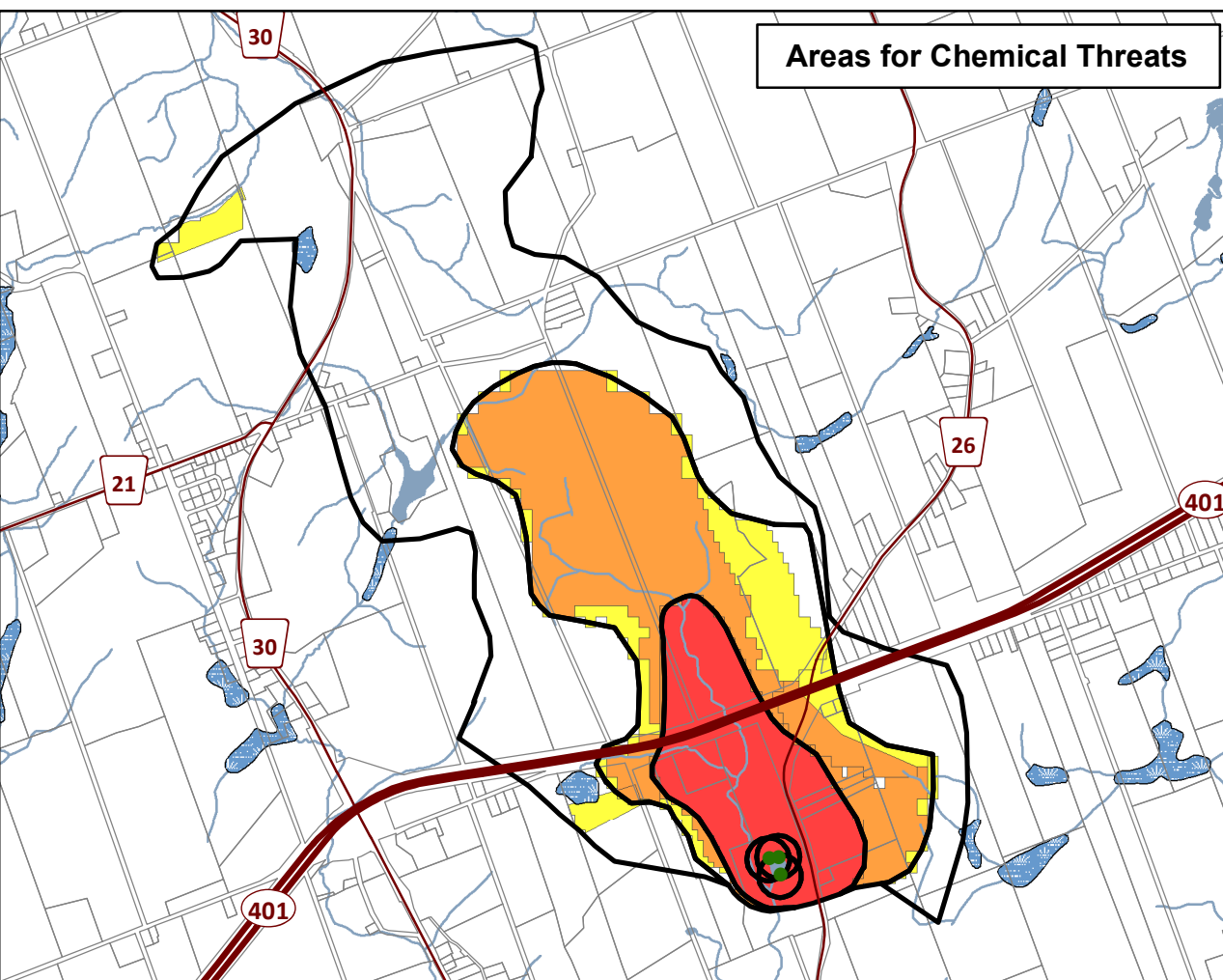


Trent Conservation Coalition Source Protection Region

www.trentsourceprotection.on.ca

This map has been prepared for the purpose of meeting the provincial requirements under the Clean Water Act, 2006. If it is proposed to use it for another purpose, it would be advisable to first consult with the responsible conservation authority.

PRODUCED BY Lower Trent Conservation on behalf of the Trent Conservation Coalition Source Protection Committee, March 2011 (Updated August 2016), with data supplied under licence by members of the Ontario Geospatial Data Exchange.



CHEMICAL THREATS			
Area	Provincial Table of Circumstances		
	Significant	Moderate	Low
	Table 01 (CW10S)	Table 03 (CW10M)	Table 06 (CW10L)
	Table 02 (CW8S)	Table 04 (CW8M)	Table 07 (CW8L)
	-	Table 05 (CW6M)	Table 08 (CW6L)

PATHOGEN THREATS			
Area	Provincial Table of Circumstances		
	Significant	Moderate	Low
	Table 12 (PW10S)	Table 13 (PW10M)	-
	-	Table 14 (PW8M)	Table 15 (PW8L)
	-	-	Table 16 (PW6L)

DNAPL THREATS			
Area	Provincial Table of Circumstances		
	Significant	Moderate	Low
	Table 9 (DWAS)	-	-
	-	Table 10 (DW6M)	Table 11 (DW6L)

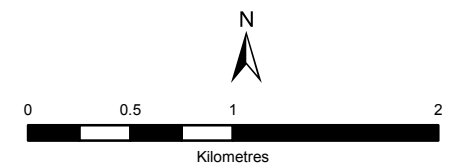
These tables indicate where chemical, pathogen, and DNAPL (dense non-aqueous phase liquid) threats are (or would be for future activities) significant, moderate, or low in the Wellhead Protection Area. The table numbers and codes refer to the Provincial Table of Circumstances that lists the circumstances under which these threats can be significant, moderate, or low. The Provincial Tables of Circumstances can be accessed from: the source protection homepage of ontario.ca or the reports and legislation page of <http://trentsourceprotection.on.ca>

**Colborne
Municipal Well System
Lower Trent
Source Protection Area**

**Wellhead Protection Areas
& Vulnerability**

Legend

- Municipal Wells
- Railway
- Watercourse
- Main Road
- Highway
- Multi Lane Highway
- Property Boundary
- Source Protection Region
- Source Protection Area
- Lower and Single Tier Municipality
- Upper Tier Municipality
- Wellhead Protection Areas
- Waterbody
- Wetland



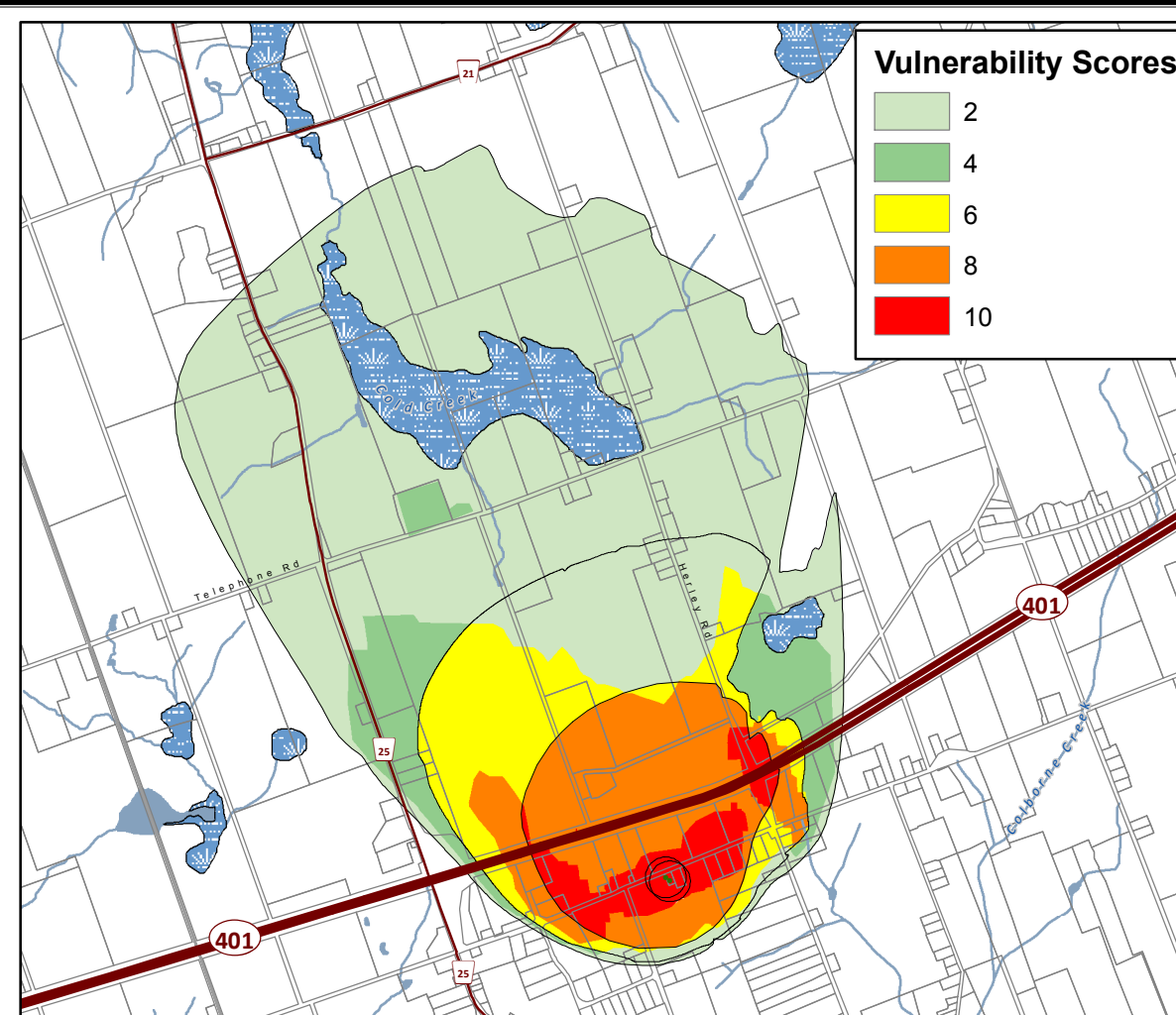
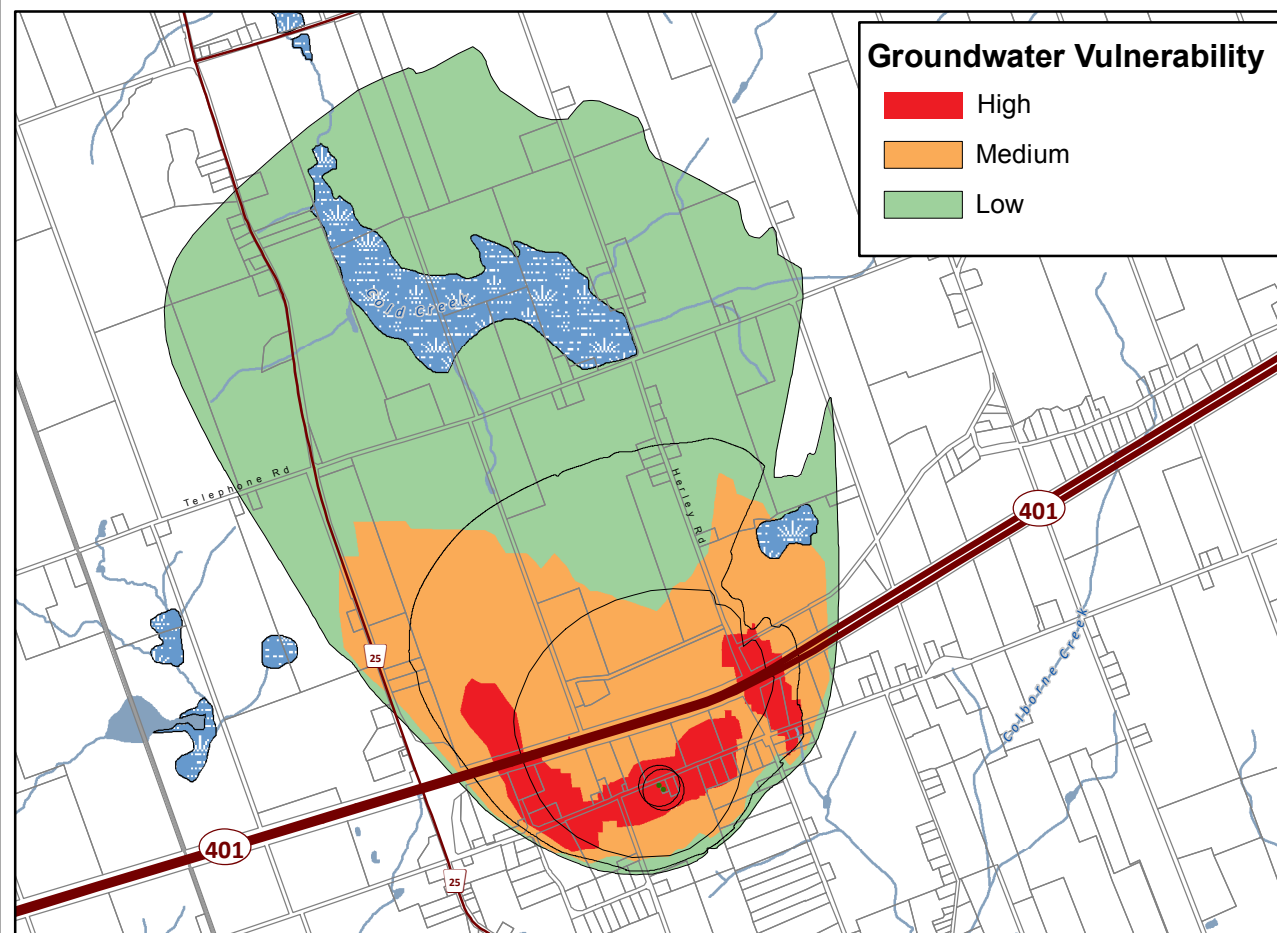
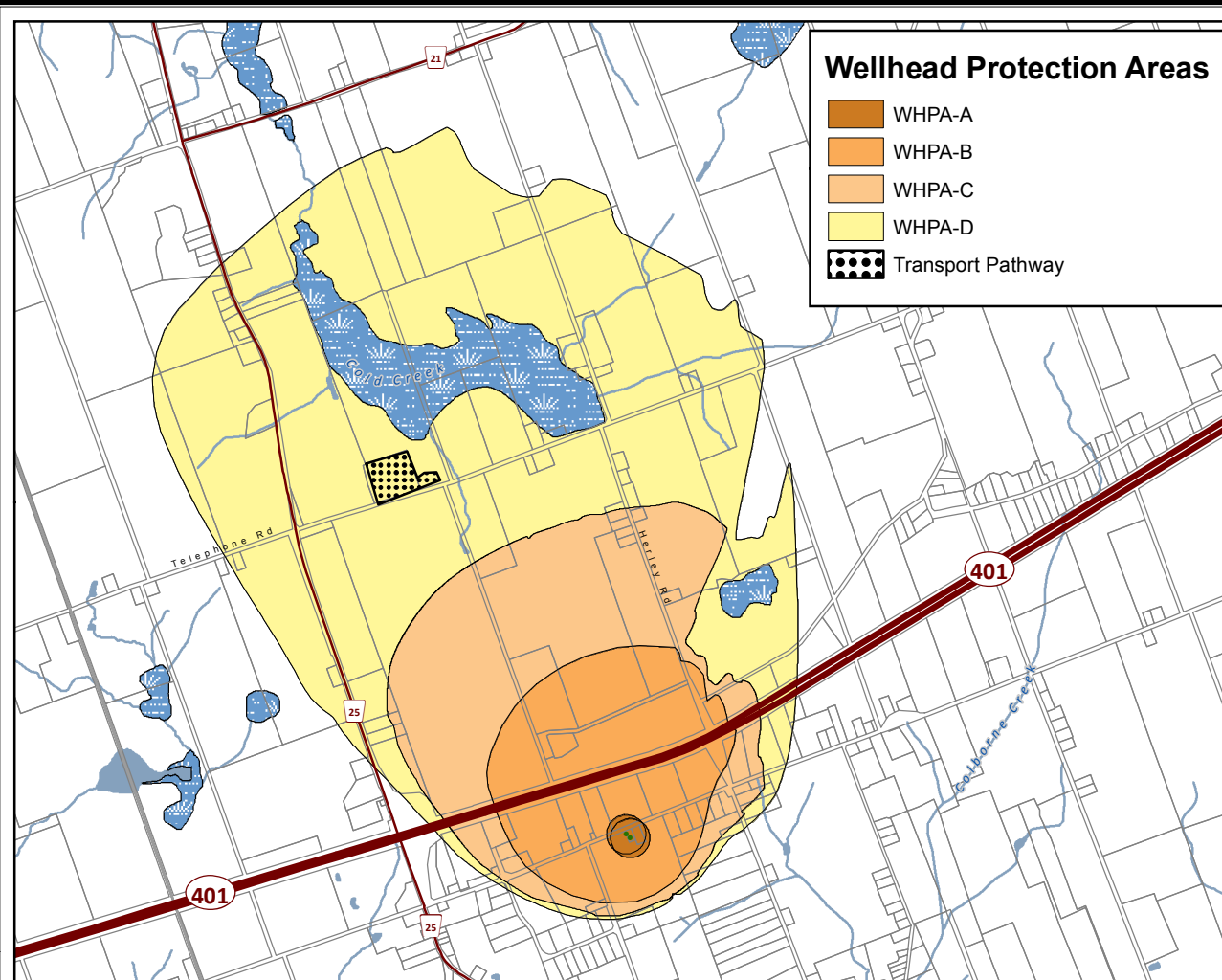
**Trent Conservation Coalition
Source Protection Region**

www.trentsourceprotection.on.ca

This map has been prepared for the purpose of meeting the provincial requirements under the Clean Water Act, 2006. If it is proposed to use it for another purpose, it would be advisable to first consult with the responsible conservation authority.

PRODUCED BY Lower Trent Conservation on behalf of the Trent Conservation Coalition Source Protection Committee, March 2011, (Updated March 2021) with data supplied under licence by members of the Ontario Geospatial Data Exchange.

NOTE: Waterbodies and watercourses located within the extent of a wellhead protection area are included in that area.



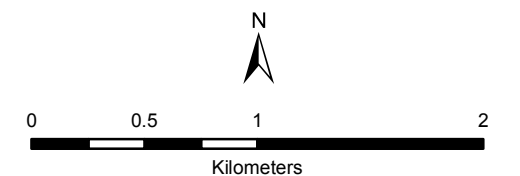
Colborne Municipal Well System

Lower Trent Source Protection Area

Managed Land, Livestock Density & Total Impervious Surface Area

Legend

- Municipal Wells
- Railway
- Main Road
- Highway
- Multi Lane Highway
- Source Protection Region
- Source Protection Area
- Upper Tier Municipality
- Lower and Single Tier Municipality
- Property Boundary
- Waterbody
- Wetland
- Watercourse

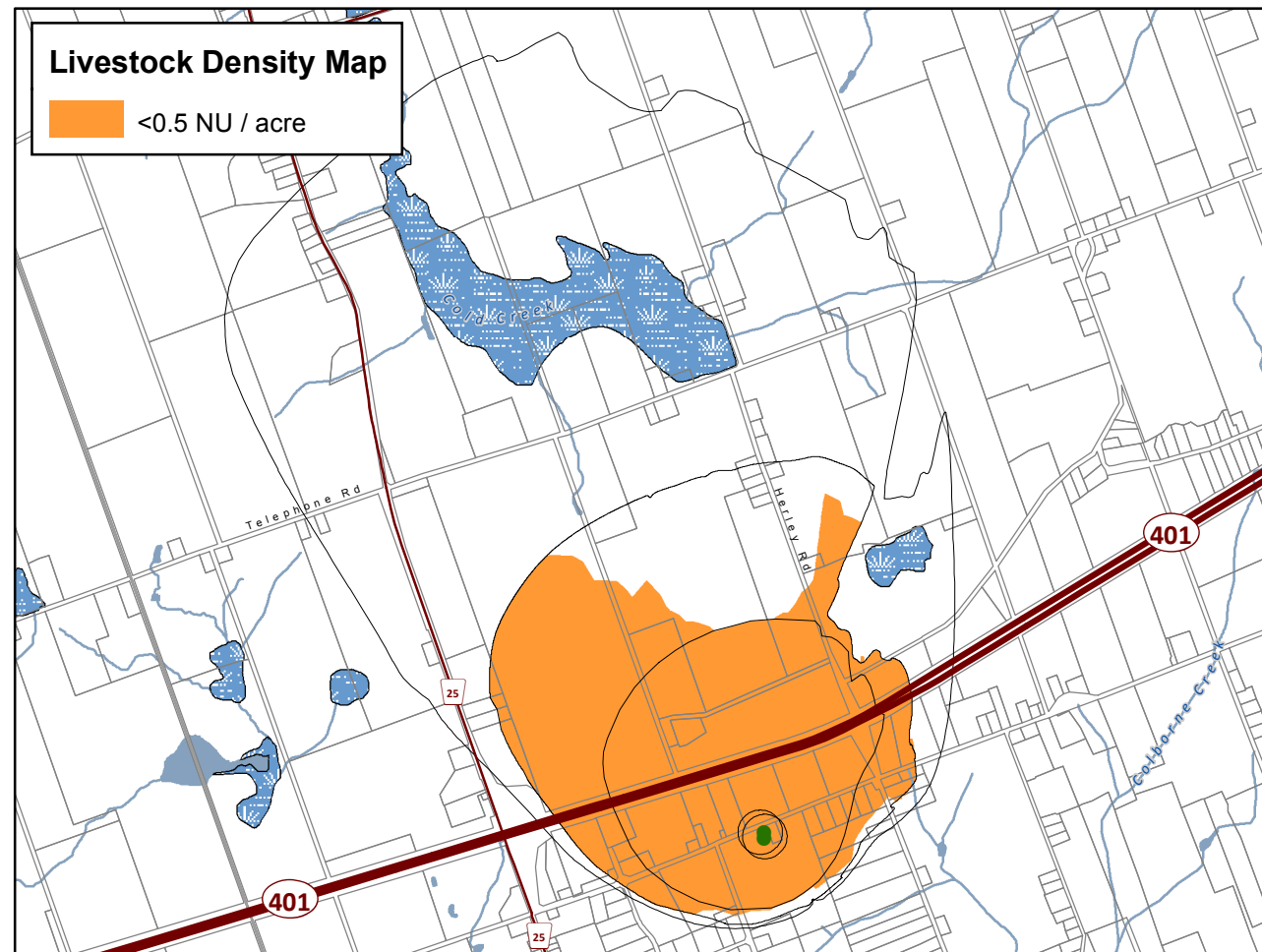
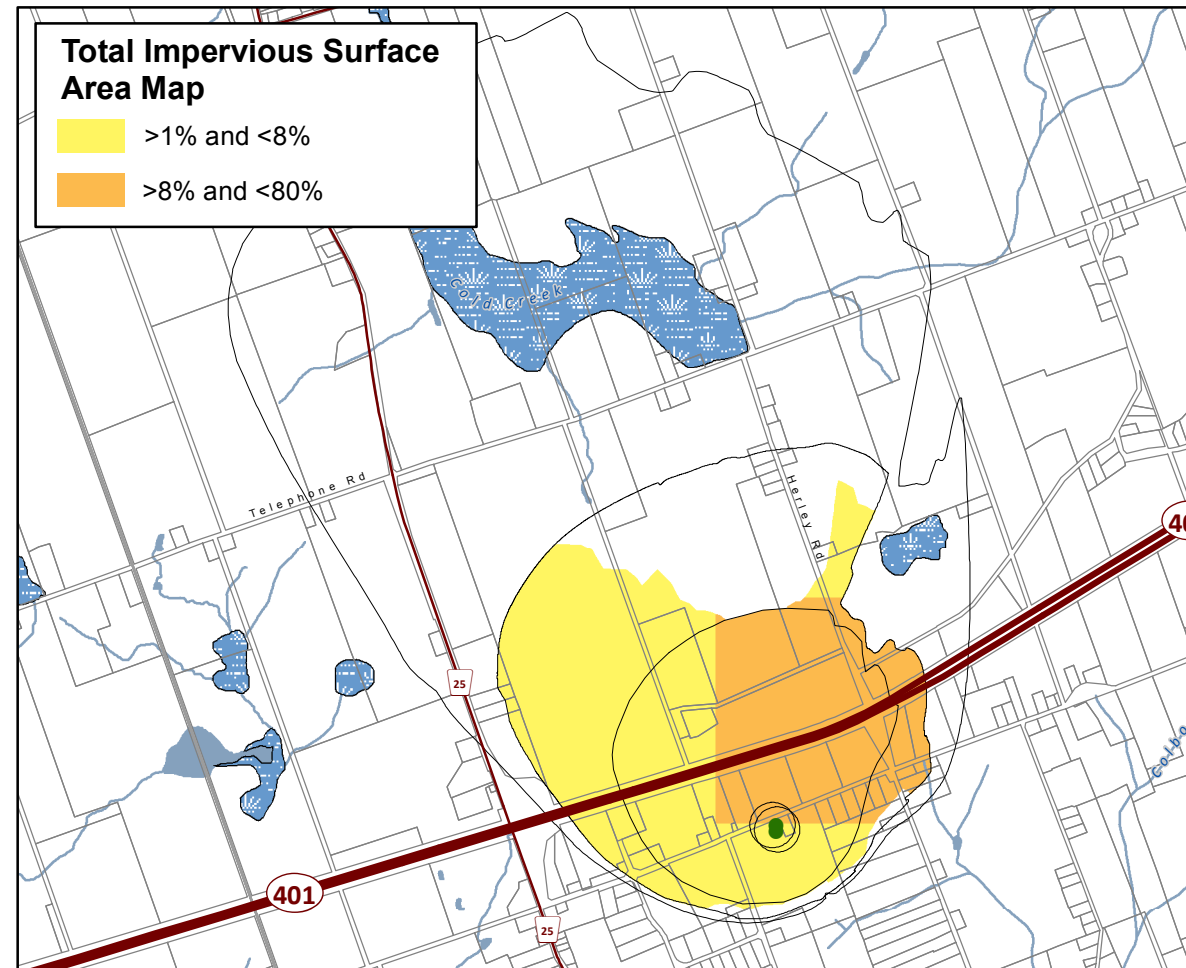
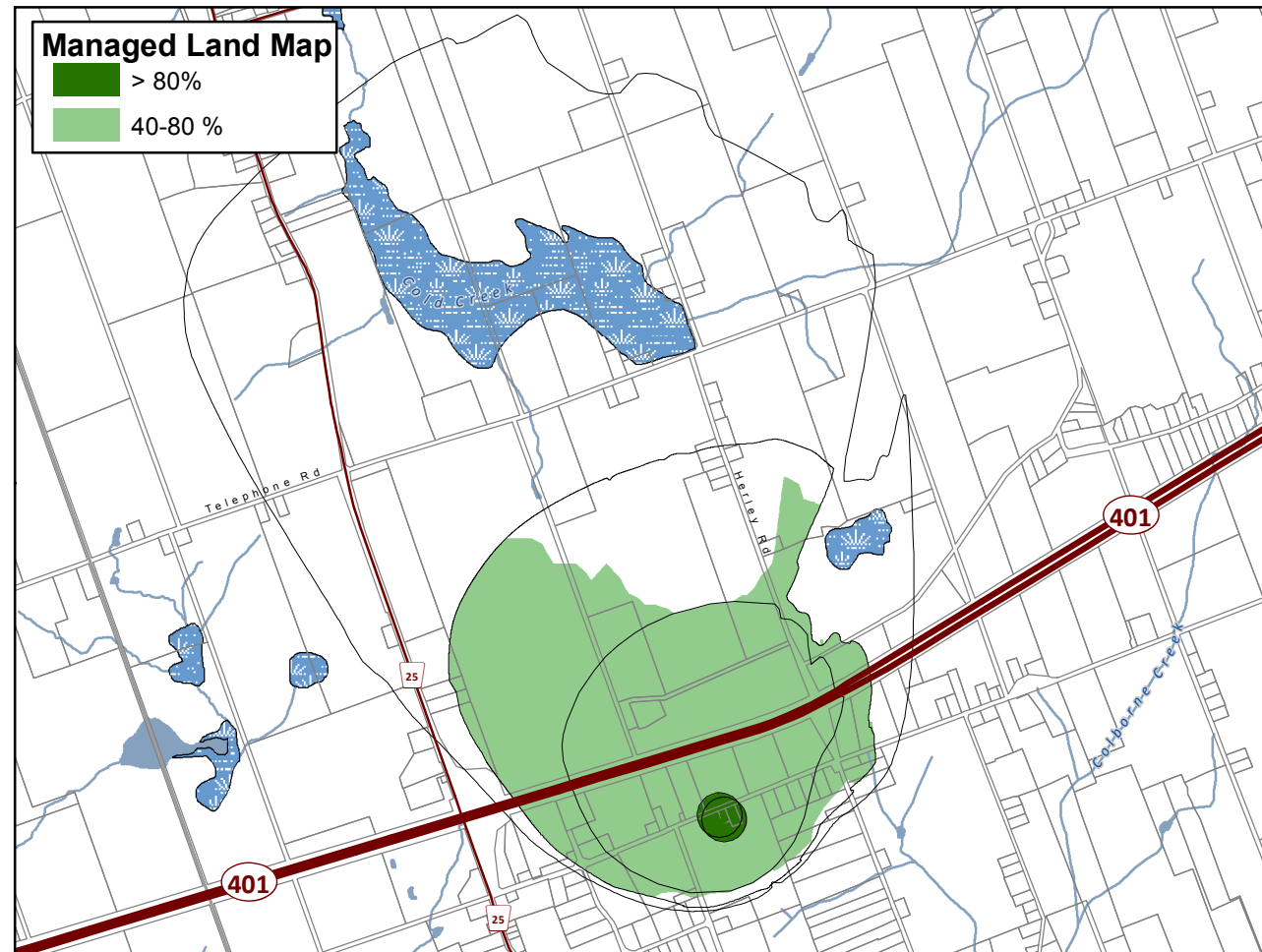


Trent Conservation Coalition Source Protection Region

www.trentsourceprotection.on.ca

This map has been prepared for the purpose of meeting the provincial requirements under the Clean Water Act, 2006. If it is proposed to use it for another purpose, it would be advisable to first consult with the responsible conservation authority.

PRODUCED BY Lower Trent Conservation on behalf of the Trent Conservation Coalition Source Protection Committee, March 2011 (Updated March 2021), with data supplied under licence by members of the Ontario Geospatial Data Exchange.

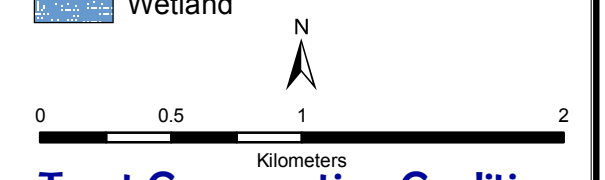


**Colborne
Municipal Well System
Lower Trent Source
Protection Area**

**Areas for Significant, Moderate, & Low Drinking Water Threats
(Chemical, Pathogen & DNAPL Threats)**

Legend

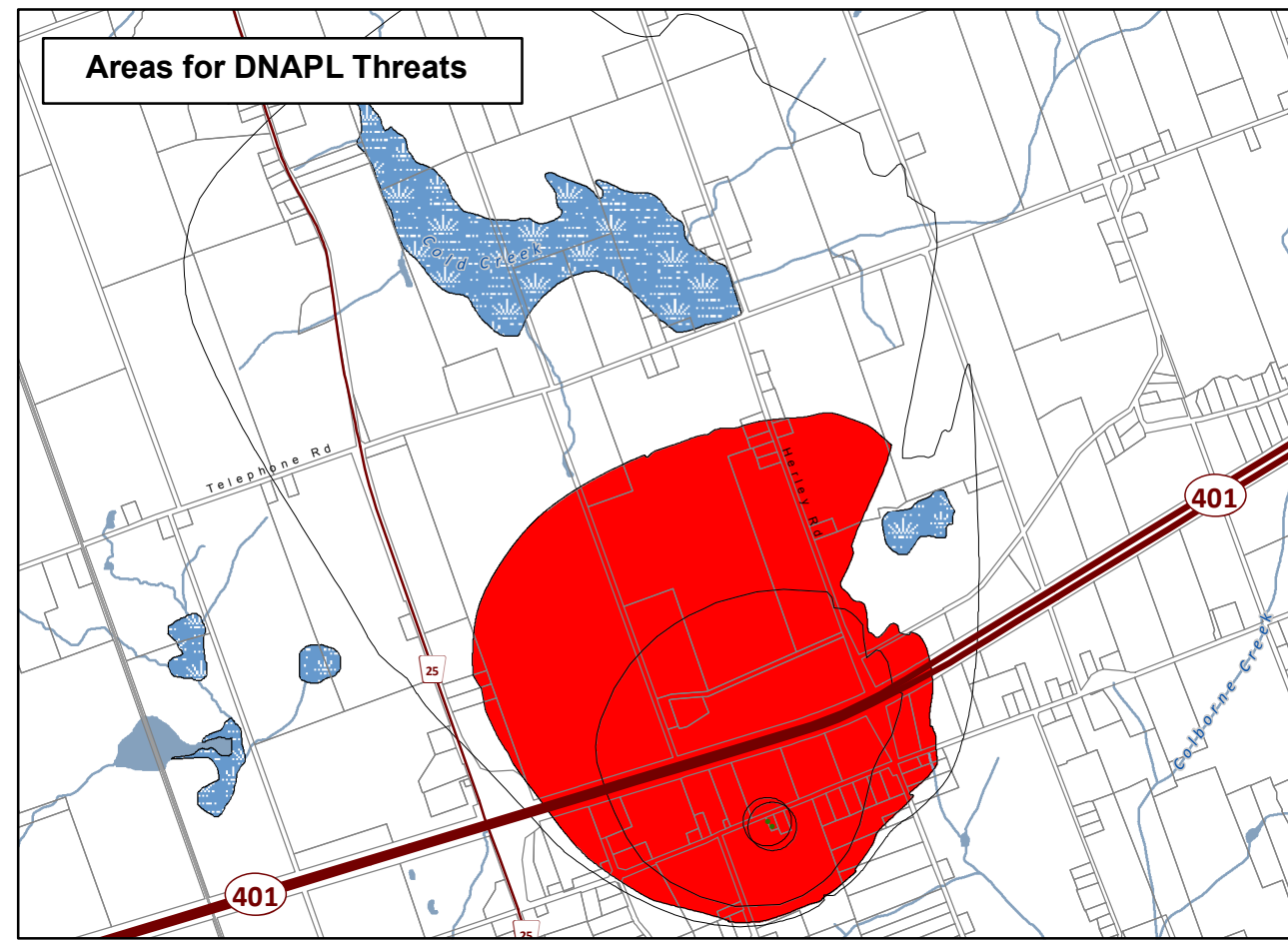
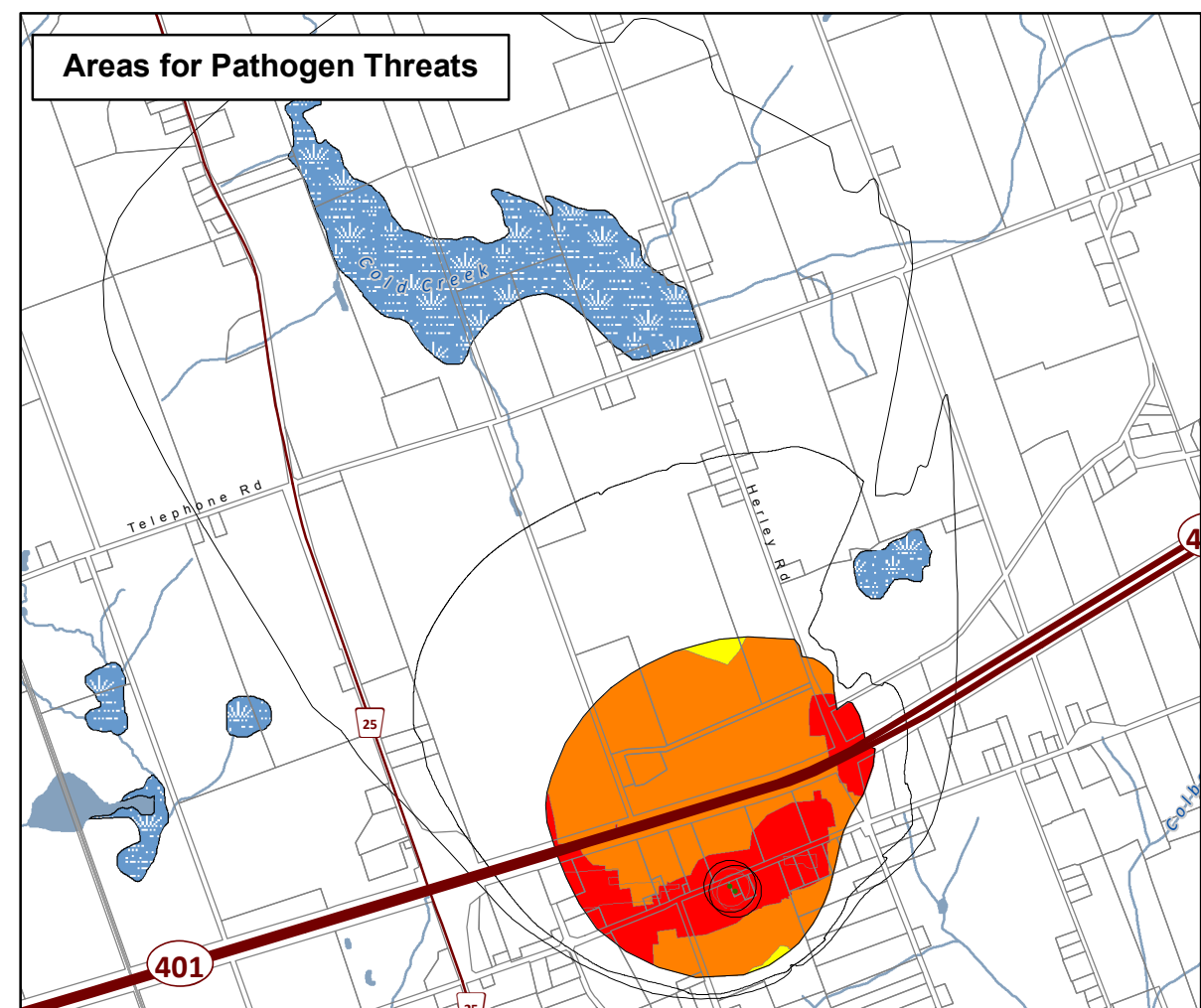
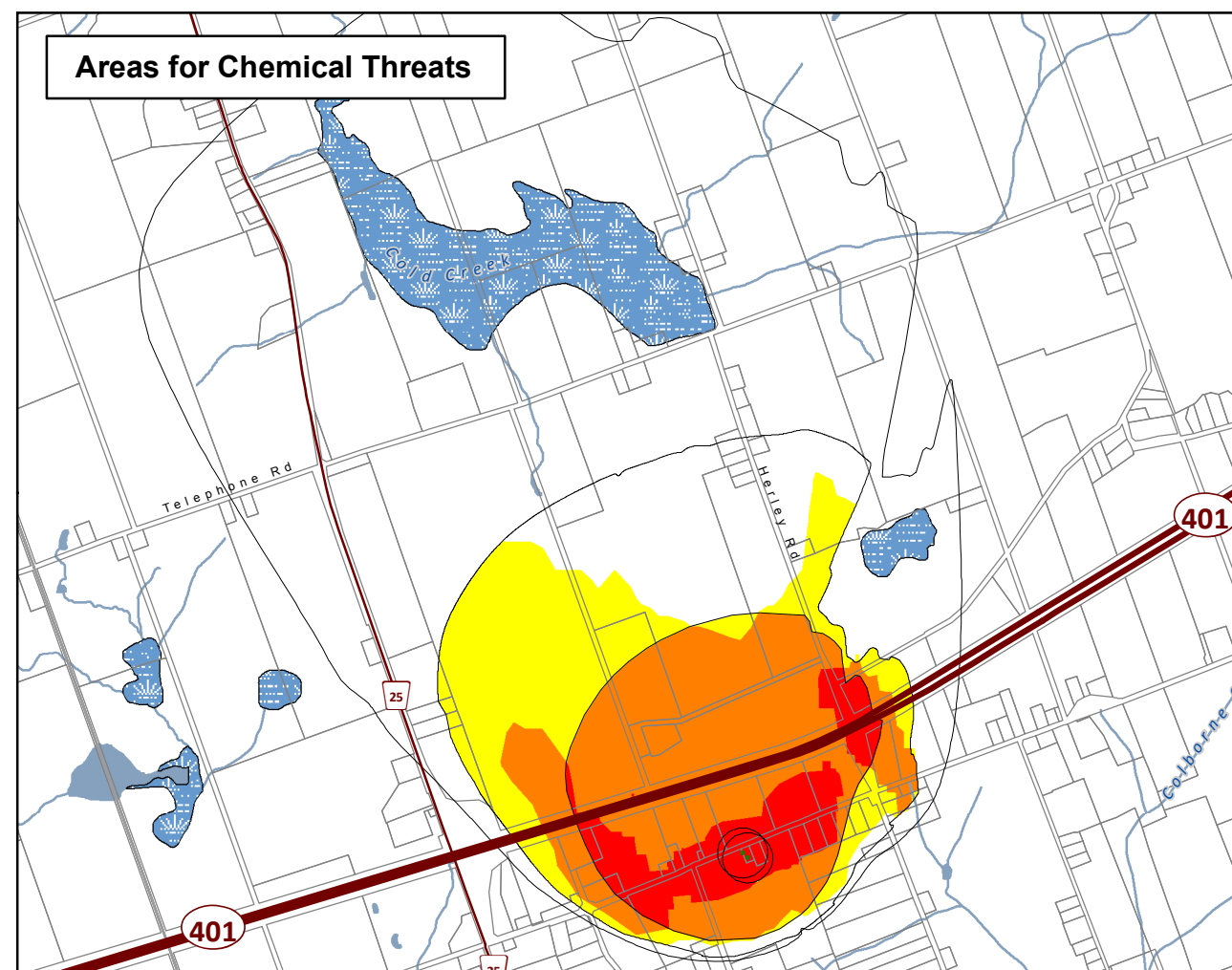
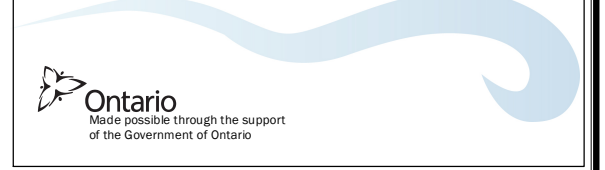
- Municipal Wells
- +— Railway
- Watercourse
- Main Road
- Highway
- Multi Lane Highway
- Property Boundary
- Source Protection Region
- Source Protection Areas
- Lower and Single Tier Municipality
- Upper Tier Municipality
- Wellhead Protection Areas
- Waterbody
- Wetland



**Trent Conservation Coalition
Source Protection Region**
www.trentsourceprotection.on.ca

This map has been prepared for the purpose of meeting the provincial requirements under the Clean Water Act, 2006. If it is proposed to use it for another purpose, it would be advisable to first consult with the responsible conservation authority.

PRODUCED BY Lower Trent Conservation on behalf of the Trent Conservation Coalition Source Protection Committee, March 2011
(Updated July 2016), with data supplied under licence by members of the Ontario Geospatial Data Exchange.



CHEMICAL THREATS			
Area	Provincial Table of Circumstances		
	Significant	Moderate	Low
Red	Table 01 (CW10S)	Table 03 (CW10M)	Table 06 (CW10L)
Orange	Table 02 (CW8S)	Table 04 (CW8M)	Table 07 (CW8L)
Yellow	-	Table 05 (CW6M)	Table 08 (CW6L)

PATHOGEN THREATS			
Area	Provincial Table of Circumstances		
	Significant	Moderate	Low
Red	Table 12 (PW10S)	Table 13 (PW10M)	-
Orange	-	Table 14 (PW8M)	Table 15 (PW8L)
Yellow	-	-	Table 16 (PW6L)

DNAPL THREATS			
Area	Provincial Table of Circumstances		
	Significant	Moderate	Low
Red	Table 9 (DWAS)	-	-
Orange	-	Table 10 (DW6M)	Table 11 (DW6L)

These tables indicate where chemical, pathogen, and DNAPL (dense non-aqueous phase liquid) threats are (or would be for future activities) significant, moderate, or low in the Wellhead Protection Area. The table numbers and codes refer to the Provincial Table of Circumstances that lists the circumstances under which these threats can be significant, moderate, or low. The Provincial Tables of Circumstances can be accessed from: the source protection homepage of ontario.ca or the reports and legislation page of <http://trentsourceprotection.on.ca>