

This map has been prepared for the purpose of meeting the provincial requirements under the Clean Water Act, 2006. If it is proposed to use it for another purpose, it would be advisable to first consult with the responsible conservation authority.

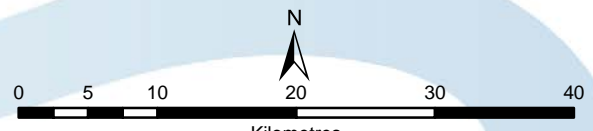
PRODUCED BY Lower Trent Conservation on behalf of the Trent Conservation Coalition Source Protection Committee, March 2011, with data supplied under licence by members of the Ontario Geospatial Data Exchange.

Legend

- Settlements
- Railroad
- Watercourse
- Roads
- Highways
- Multi Lane Highway
- Source Protection Areas
- Source Protection Region
- Upper and Single Tier Municipality
- Lower Tier Municipality
- Waterbody

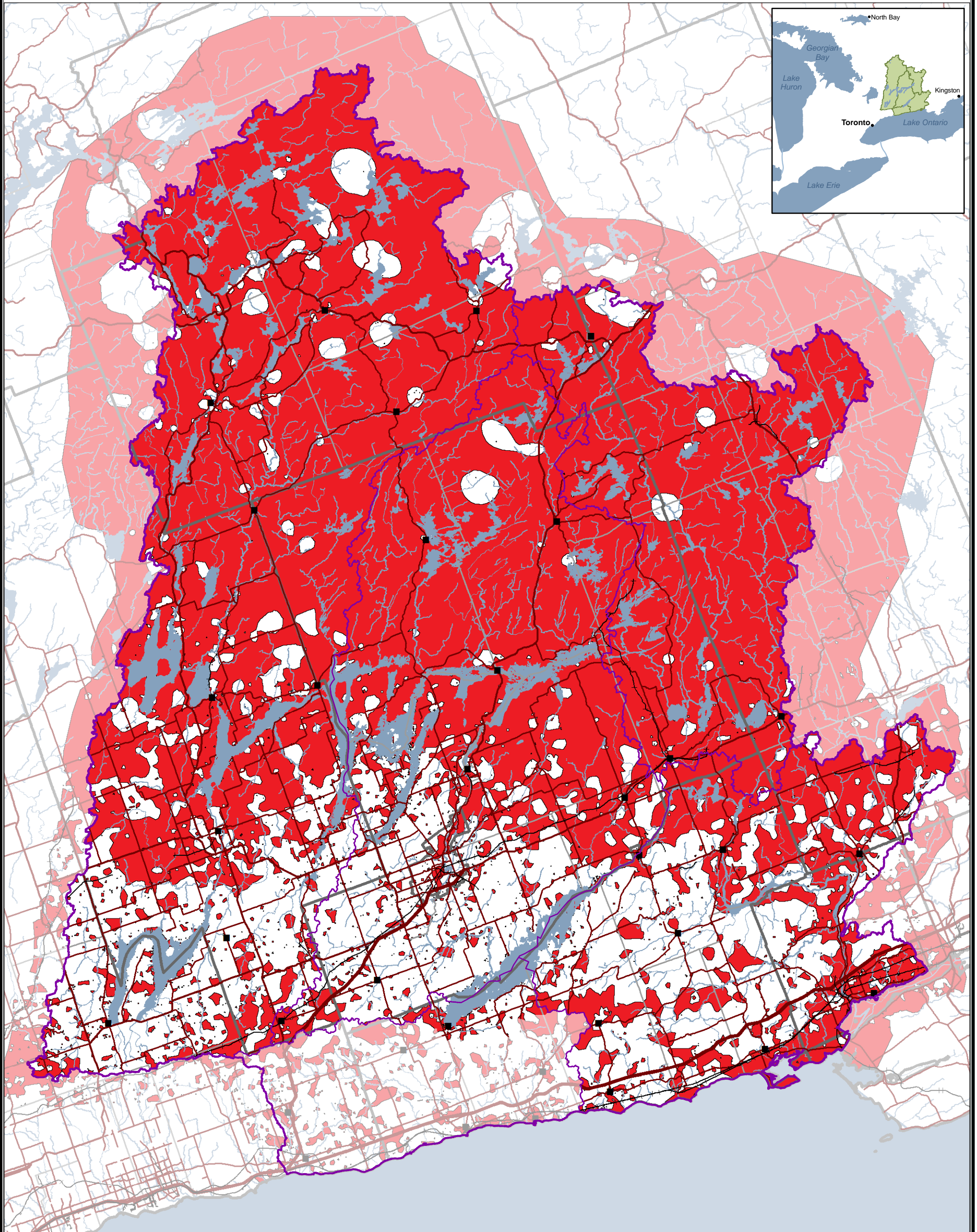
Groundwater Vulnerability

- High
- Medium
- Low



Trent Conservation Coalition Source Protection Region
www.trentsourceprotection.on.ca





This map has been prepared for the purpose of meeting the provincial requirements under the Clean Water Act, 2006. If it is proposed to use it for another purpose, it would be advisable to first consult with the responsible conservation authority.

PRODUCED BY Lower Trent Conservation on behalf of the Trent Conservation Coalition Source Protection Committee, March 2011, with data supplied under licence by members of the Ontario Geospatial Data Exchange.

Legend

- Settlements
- Railroad
- Watercourse
- Roads
- Highways
- Multi Lane Highway
- Highly Vulnerable Aquifer (Vulnerability Score = 6)
- Source Protection Areas
- Source Protection Region
- Upper and Single Tier Municipality
- Lower Tier Municipality
- Waterbody

