

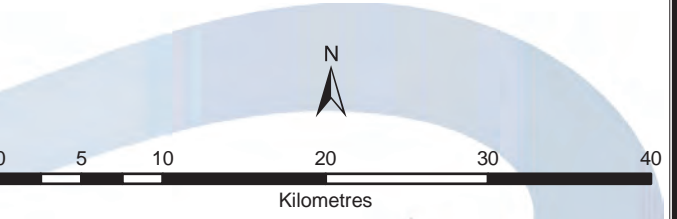
THIS MAP has been prepared for the purpose of meeting the provincial requirements under the Clean Water Act, 2006. If it is proposed to use it for another purpose, it would be advisable to consult with the responsible Conservation Authority.

PRODUCED BY Kawartha Region Conservation Authority on behalf of the Trent Conservation Coalition Source Protection Committee, March 2010, with data supplied under licence by members of the Ontario Geospatial Data Exchange.

OTHER DATA SOURCES:

Legend	
●	Settlements
—	Road
—	Highway
—	Multi-lane Highway
—	Railway
—	Watercourse
■	Waterbody
□	Lower Tier Municipality
□	Upper and Single Tier Municipality
□	Source Protection Area Boundary

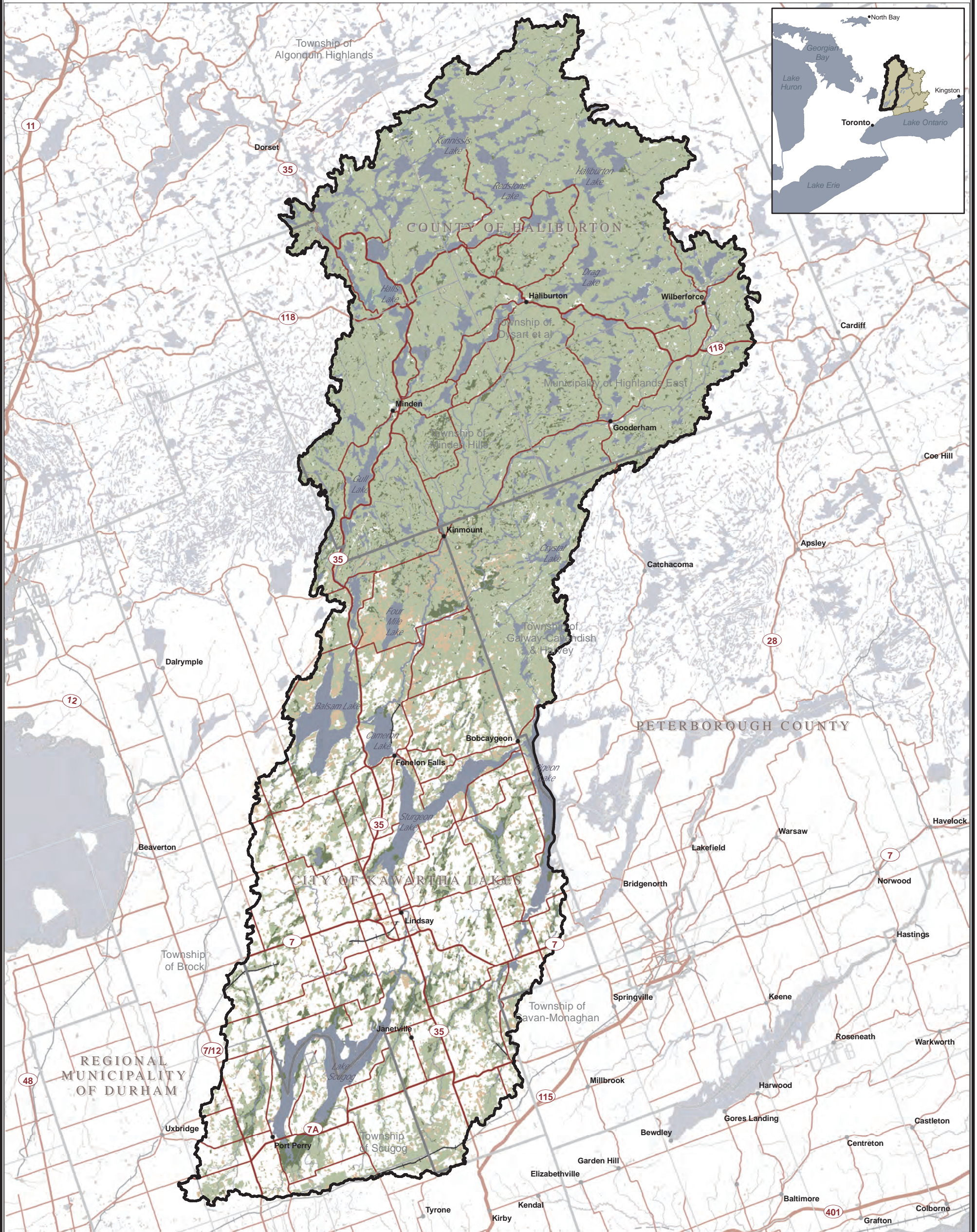
Other Drinking Water Systems	
●	3 - Large Municipal Non-Residential System
●	4 - Small Municipal Non-Residential System
●	5 - Non-Municipal Year-Round Residential System
●	6 - Non-Municipal Seasonal Residential System
●	7 - Large Non-Municipal Non-Residential System
●	8 - Small Non-Municipal Non-Residential System



Trent Conservation Coalition Source Protection Region
www.trentsourceprotection.on.ca

Proposed Trent Assessment Report Map 2-11 (KH)





Proposed Trent Assessment Report Map 2-12 (KH)

THIS MAP has been prepared for the purpose of meeting the provincial requirements under the Clean Water Act, 2006. If it is proposed to use it for another purpose, it would be advisable to consult with the responsible Conservation Authority.

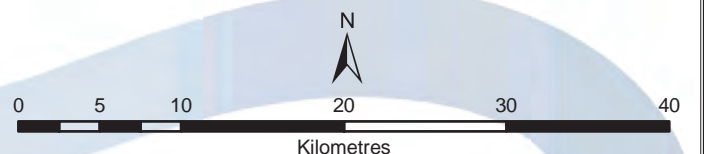
PRODUCED BY Kawartha Region Conservation Authority on behalf of the Trent Conservation Coalition Source Protection Committee, March 2010, with data supplied under licence by members of the Ontario Geospatial Data Exchange.



Legend

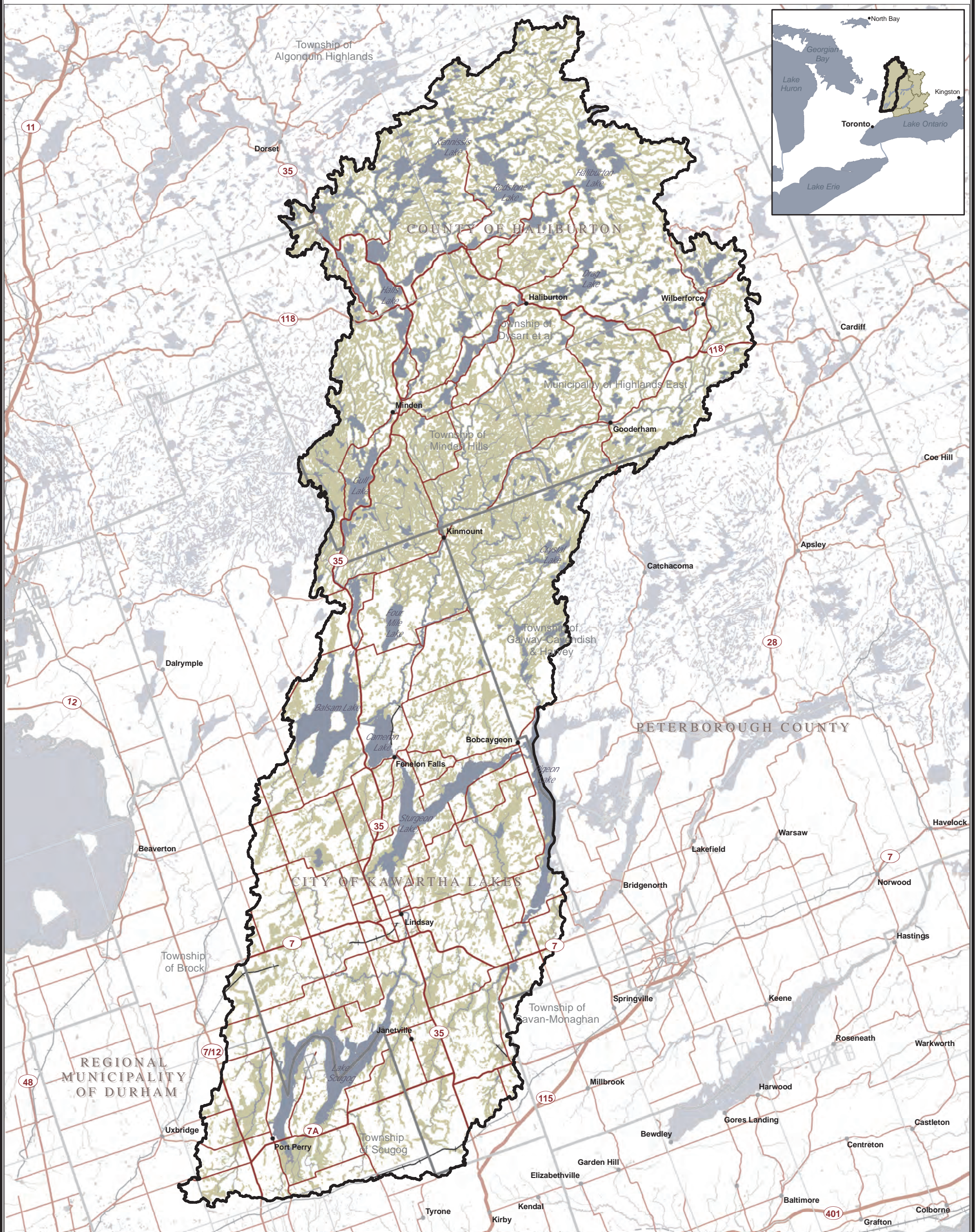
- Settlements
- Road
- Highway
- Multi-lane Highway
- Railway
- Watercourse
- Waterbody
- Lower Tier Municipality
- Upper and Single Tier Municipality
- Source Protection Area Boundary

- Natural Features**
- Meadow
 - Wetland
 - Woodland



Trent Conservation Coalition Source Protection Region

www.trentsourceprotection.on.ca



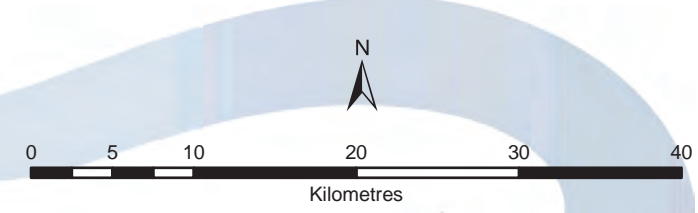
Proposed Trent Assessment Report Map 2-13 (KH)

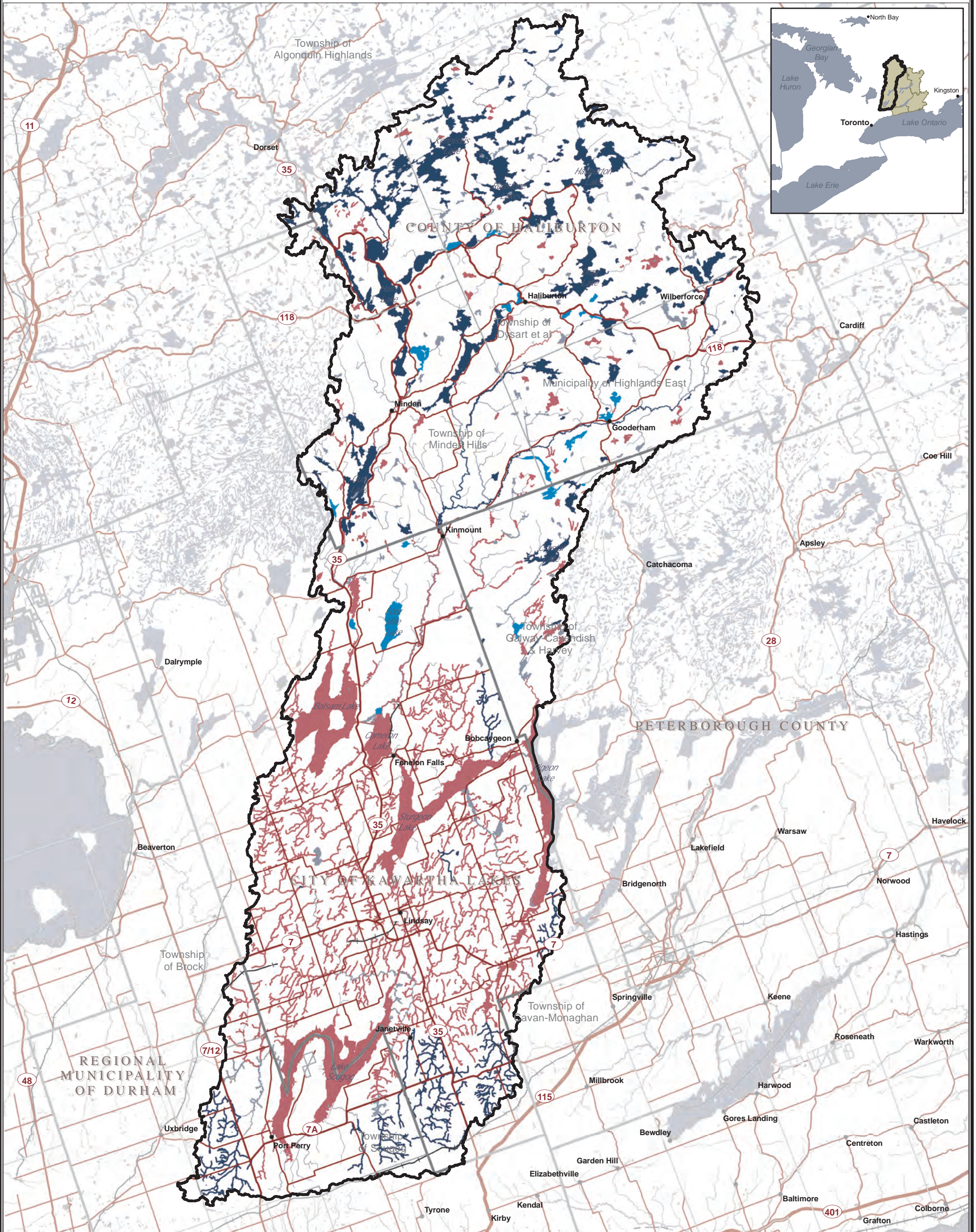
THIS MAP has been prepared for the purpose of meeting the provincial requirements under the Clean Water Act, 2006. If it is proposed to use it for another purpose, it would be advisable to consult with the responsible Conservation Authority.

PRODUCED BY Kawartha Region Conservation Authority on behalf of the Trent Conservation Coalition Source Protection Committee, March 2010, with data supplied under licence by members of the Ontario Geospatial Data Exchange.

OTHER DATA SOURCES:

- Legend**
- Settlements
 - Road
 - Highway
 - Multi-lane Highway
 - + Railway
 - Watercourse
 - Waterbody
 - Lower Tier Municipality
 - Upper and Single Tier Municipality
 - ▭ Source Protection Area Boundary
 - ▭ Vegetated Riparian Area





THIS MAP has been prepared for the purpose of meeting the provincial requirements under the Clean Water Act, 2006. If it is proposed to use it for another purpose, it would be advisable to consult with the responsible Conservation Authority.

PRODUCED BY Kawartha Region Conservation Authority on behalf of the Trent Conservation Coalition Source Protection Committee, March 2010, with data supplied under licence by members of the Ontario Geospatial Data Exchange.

OTHER DATA SOURCES:

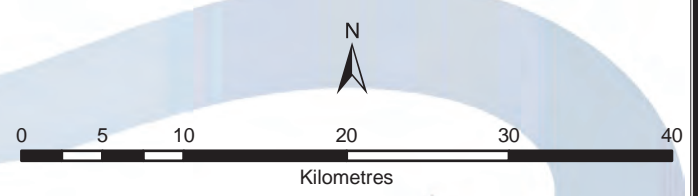
Ontario
Made possible through the support of the Government of Ontario

Legend

- Settlements
- Road
- Highway
- Multi-lane Highway
- Railway
- Watercourse
- Lower Tier Municipality
- Upper and Single Tier Municipality
- Source Protection Area Boundary

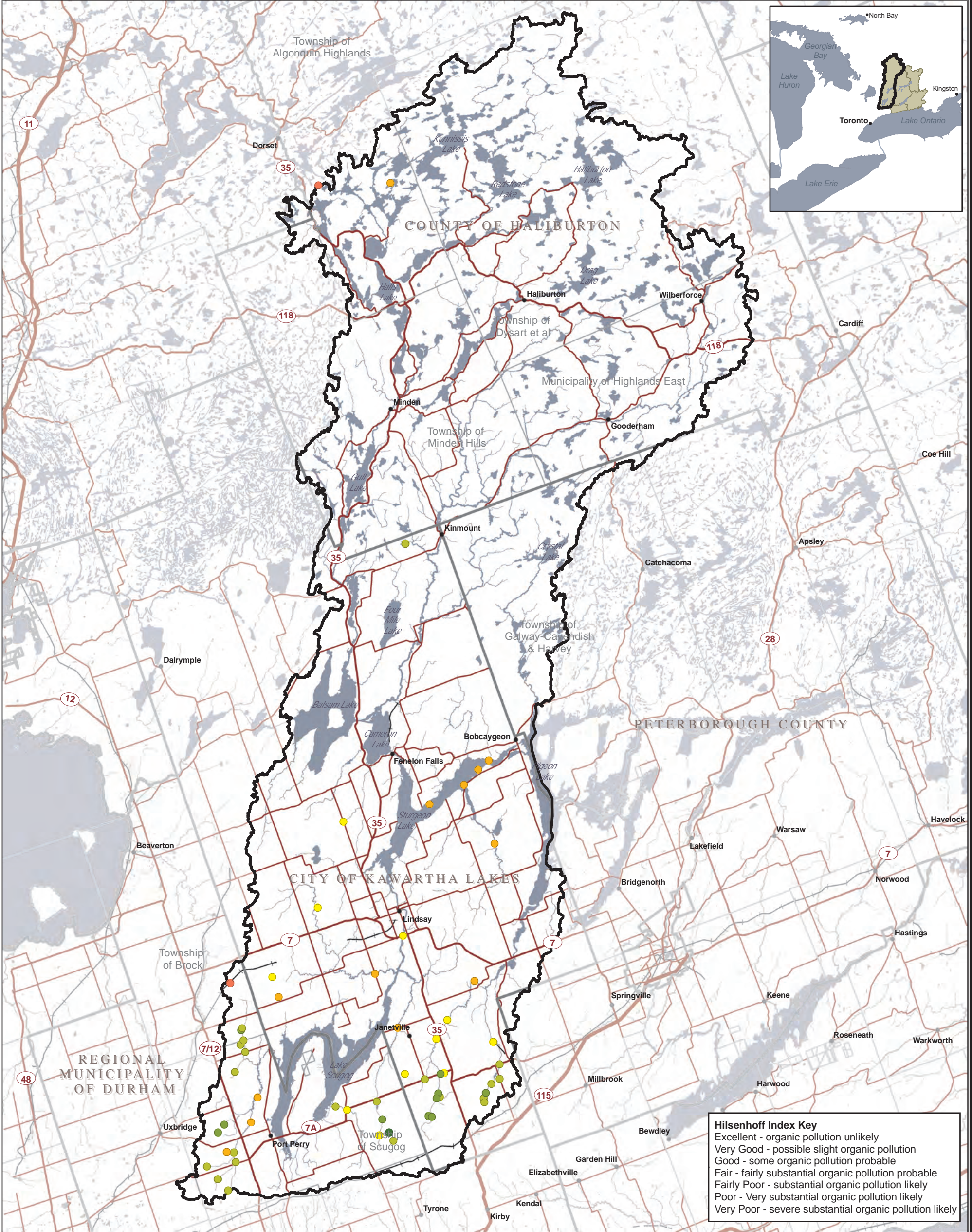
Waterbody/Watercourse

- Cold Water
- Cool Water
- Warm Water
- Unknown



Trent Conservation Coalition Source Protection Region
www.trentsourceprotection.on.ca

Proposed Trent Assessment Report Map 2-14 (KH)



Hilsenhoff Index Key

- Excellent - organic pollution unlikely
- Very Good - possible slight organic pollution
- Good - some organic pollution probable
- Fair - fairly substantial organic pollution probable
- Fairly Poor - substantial organic pollution likely
- Poor - Very substantial organic pollution likely
- Very Poor - severe substantial organic pollution likely

THIS MAP has been prepared for the purpose of meeting the provincial requirements under the Clean Water Act, 2006. If it is proposed to use it for another purpose, it would be advisable to consult with the responsible Conservation Authority.

PRODUCED BY Kawartha Region Conservation Authority on behalf of the Trent Conservation Coalition Source Protection Committee, March 2010, with data supplied under licence by members of the Ontario Geospatial Data Exchange.

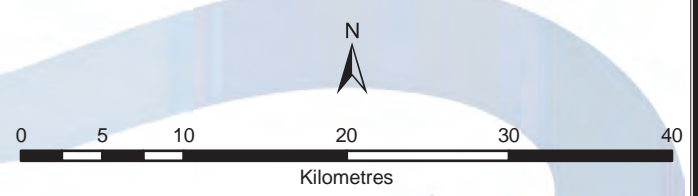
OTHER DATA SOURCES: Hilsenhoff Scoring: Kawartha Conservation

Legend

- Settlements
- Road
- Highway
- Multi-lane Highway
- Railway
- Watercourse
- Waterbody
- Lower Tier Municipality
- Upper and Single Tier Municipality
- Source Protection Area Boundary

Hilsenhoff Scoring

- 0-3.75 (Excellent)
- 3.76-4.25 (Very Good)
- 4.26-5.00 (Good)
- 5.01-5.75 (Fair)
- 5.76-6.50 (Fairly Poor)
- 6.51-7.25 (Poor)
- 7.26-10.00 (Very Poor)

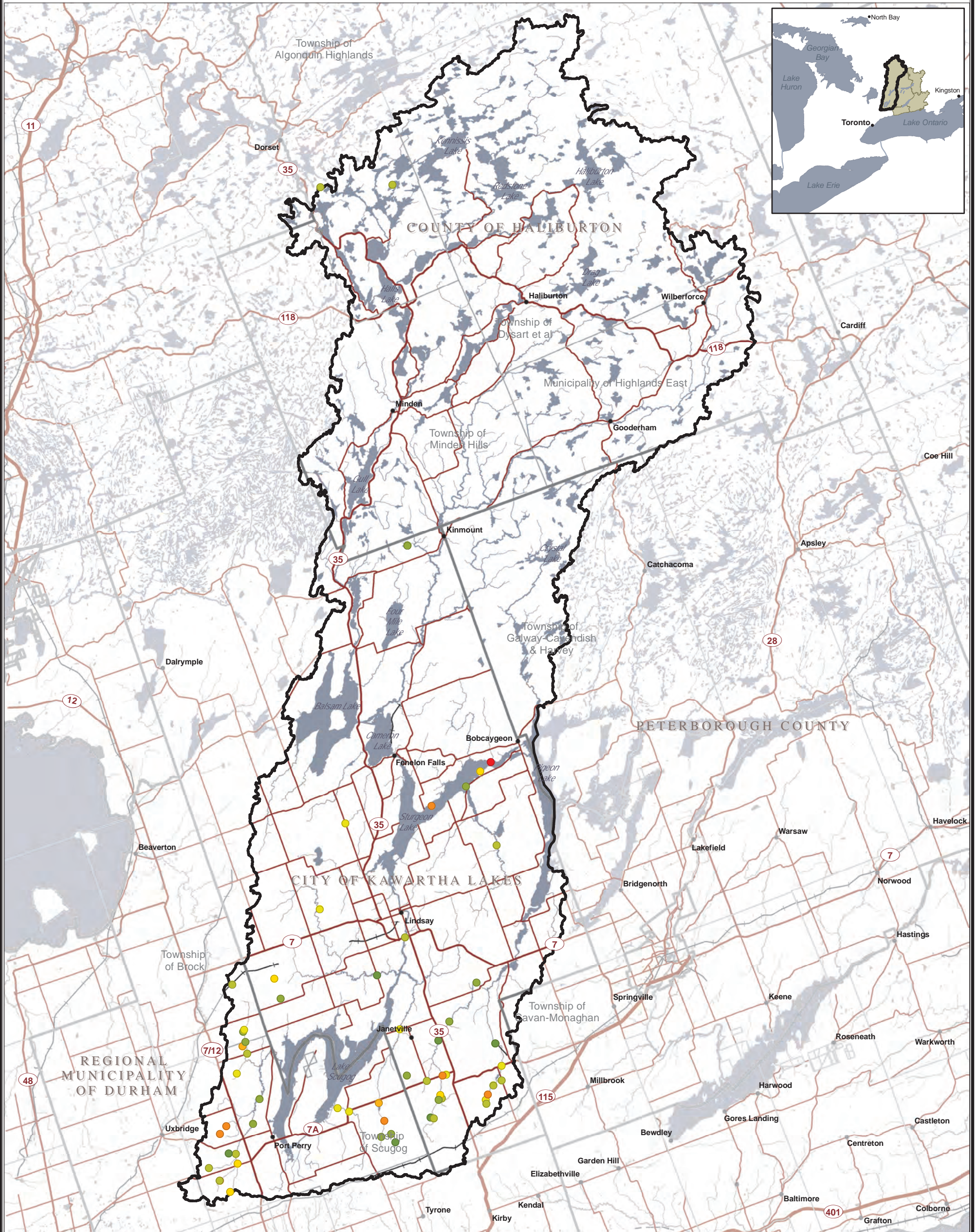


Trent Conservation Coalition Source Protection Region

www.trentsourceprotection.on.ca

Proposed Trent Assessment Report Map 2-15 (KH)





THIS MAP has been prepared for the purpose of meeting the provincial requirements under the Clean Water Act, 2006. If it is proposed to use it for another purpose, it would be advisable to consult with the responsible Conservation Authority.

PRODUCED BY Kawartha Region Conservation Authority on behalf of the Trent Conservation Coalition Source Protection Committee, March 2010, with data supplied under licence by members of the Ontario Geospatial Data Exchange.

OTHER DATA SOURCES: Simpson's Scoring: Kawartha Conservation

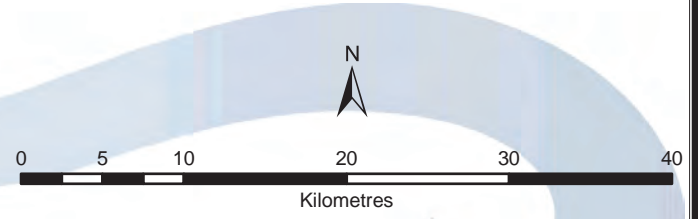
Ontario
Made possible through the support of the Government of Ontario

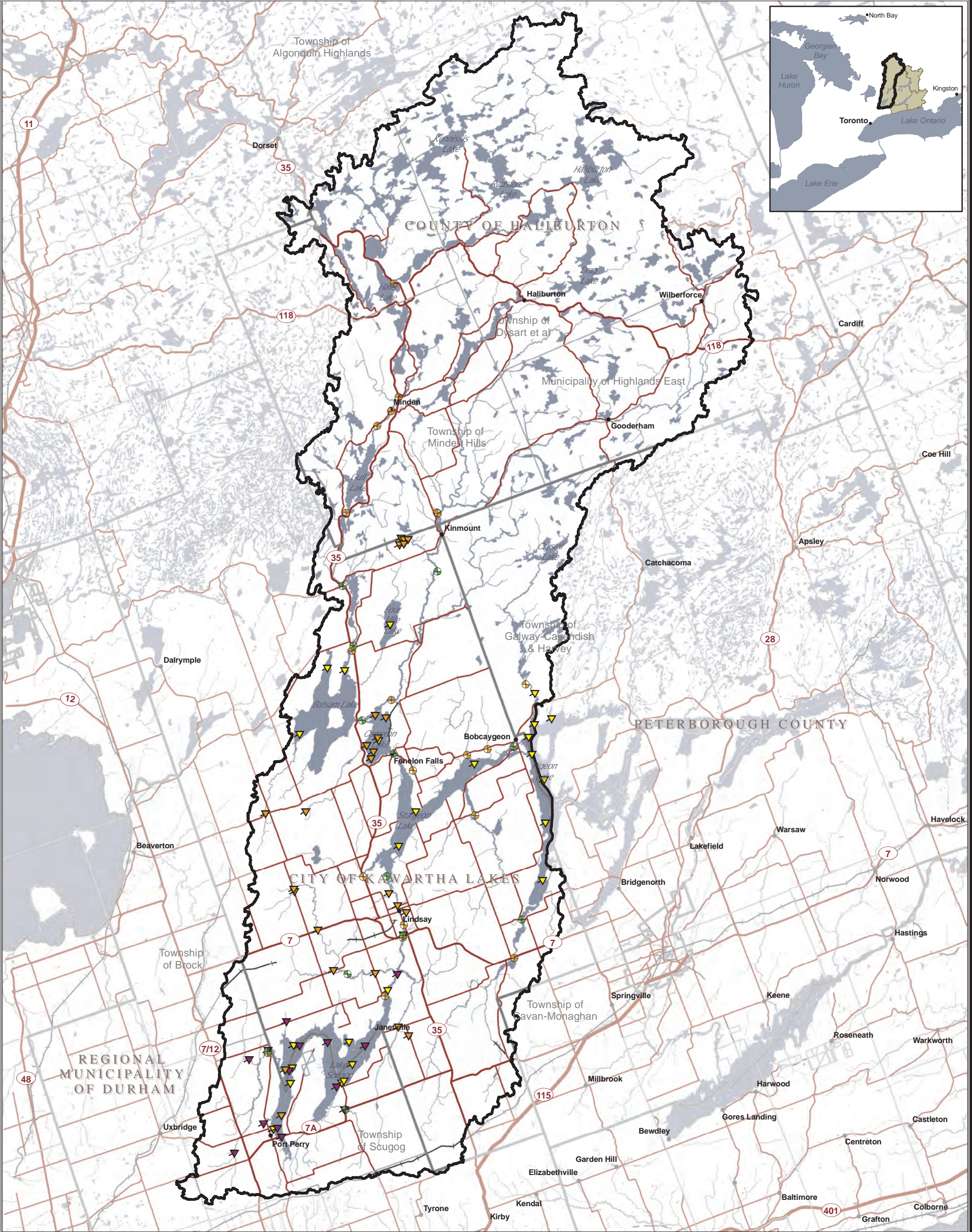
Legend

- Settlements
- Road
- Highway
- Multi-lane Highway
- Railway
- Watercourse
- Waterbody
- Lower Tier Municipality
- Upper and Single Tier Municipality
- ▭ Source Protection Area Boundary

Simpson's Scoring
Note: 1 = High Diversity
0 = Low Diversity

- 0-0.1
- 0.11-0.2
- 0.21-0.3
- 0.31-0.40
- 0.41-0.5
- 0.51-0.6
- 0.61-0.7
- 0.71-0.8
- 0.81-0.9
- 0.91-1.0





THIS MAP has been prepared for the purpose of meeting the provincial requirements under the Clean Water Act, 2006. If it is proposed to use it for another purpose, it would be advisable to consult with the responsible Conservation Authority.

PRODUCED BY Kawartha Region Conservation Authority on behalf of the Trent Conservation Coalition Source Protection Committee, March 2010, with data supplied under licence by members of the Ontario Geospatial Data Exchange.

OTHER DATA SOURCES:

Made possible through the support of the Government of Ontario

Legend

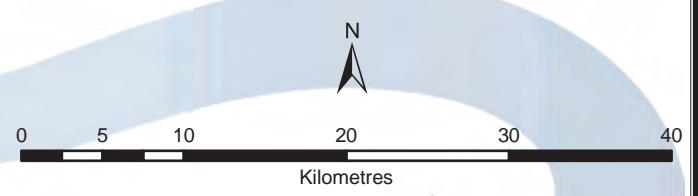
- Settlements
- Road
- Highway
- Multi-lane Highway
- Railway
- Watercourse
- Waterbody
- Lower Tier Municipality
- Upper and Single Tier Municipality
- Source Protection Area Boundary

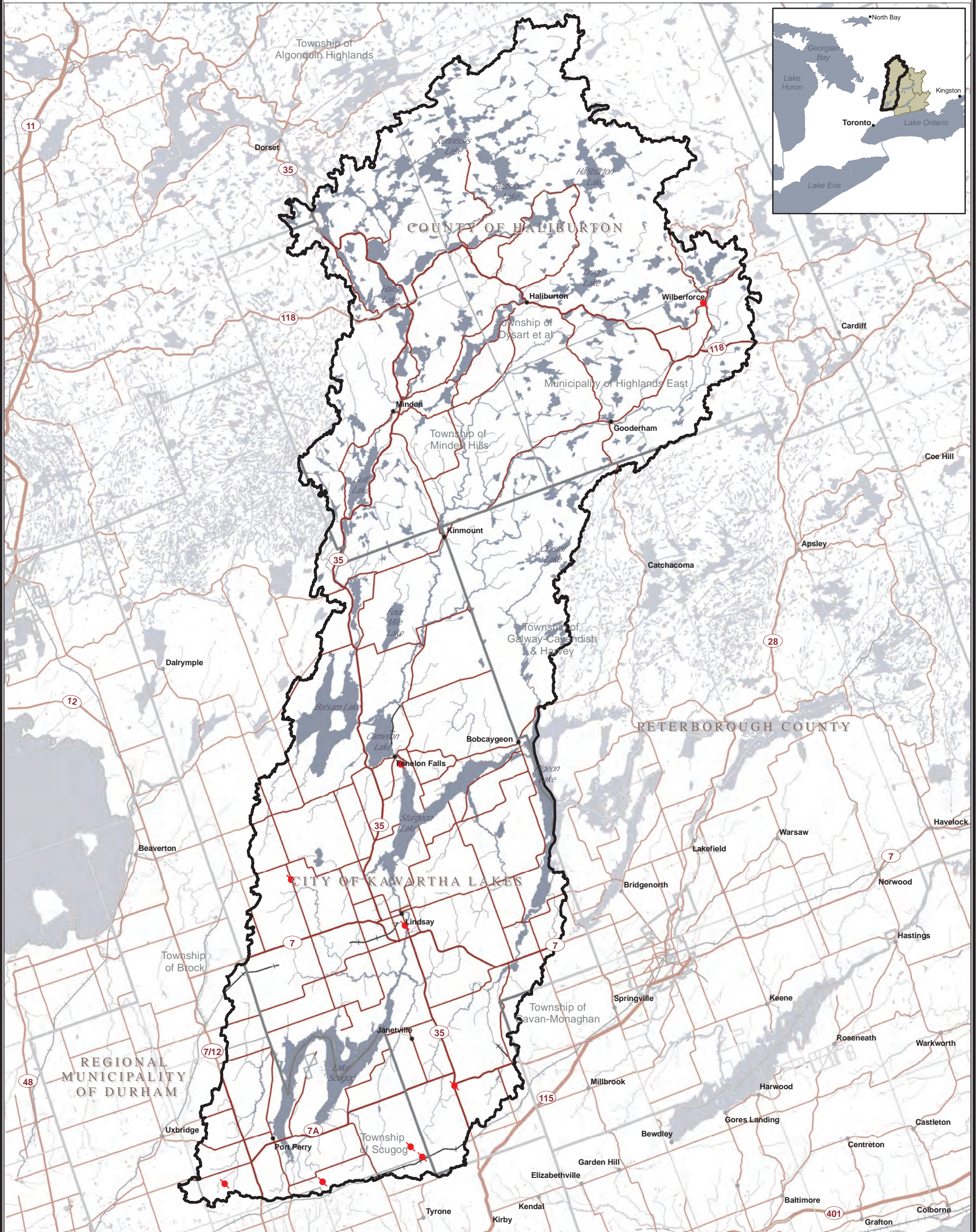
PWQMN Sampling Sites

- Active
- Historic

Other Sampling Sites

- ▲ KWW Sites
- ▲ LSEMP Sites
- ▲ Lake Partner Program





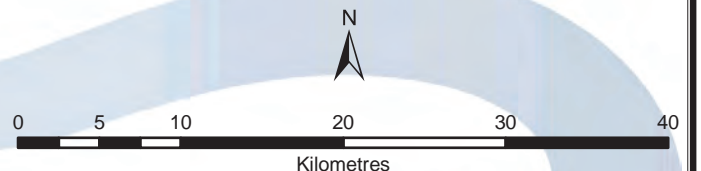
THIS MAP has been prepared for the purpose of meeting the provincial requirements under the Clean Water Act, 2006. If it is proposed to use it for another purpose, it would be advisable to consult with the responsible Conservation Authority.

PRODUCED BY Kawartha Region Conservation Authority on behalf of the Trent Conservation Coalition Source Protection Committee, March 2010, with data supplied under licence by members of the Ontario Geospatial Data Exchange.

OTHER DATA SOURCES:

Legend

- Settlements
- Road
- Highway
- Multi-lane Highway
- Railway
- Watercourse
- Waterbody
- Lower Tier Municipality
- Upper and Single Tier Municipality
- Source Protection Area Boundary
- PGMN Wells



Trent Conservation Coalition Source Protection Region

www.trentsourceprotection.on.ca