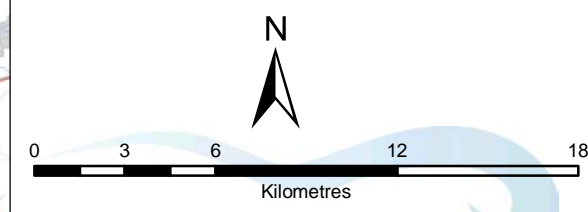




Lower Trent Source Protection Area

Other Drinking Water Systems

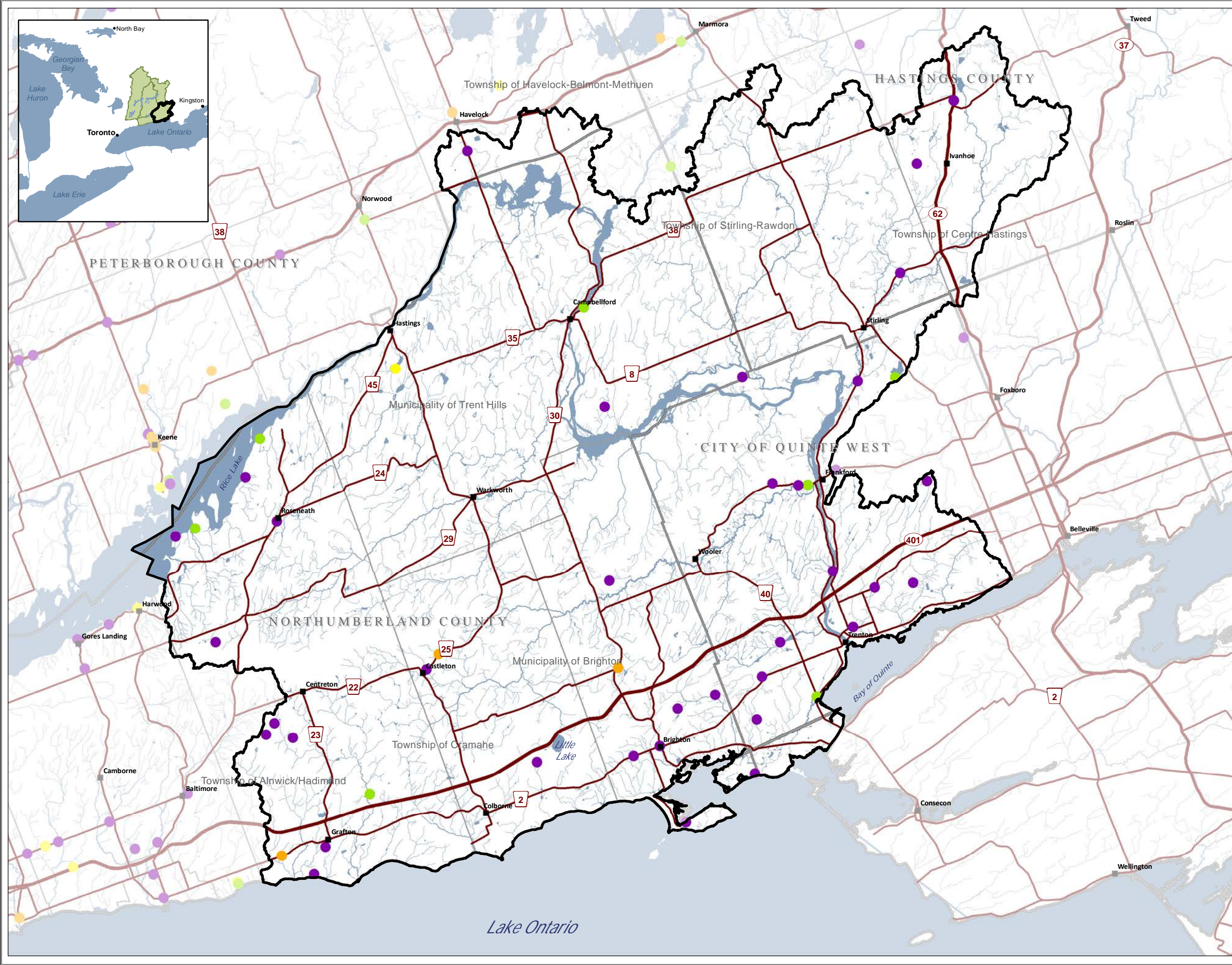
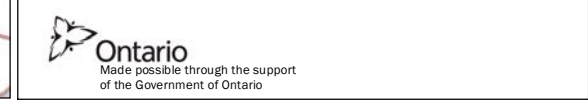
- Legend**
- Settlements
 - Highway
 - Multi-lane Highway
 - Watercourse
 - Lower Tier Municipality
 - Upper and Single Tier Municipality
 - Waterbody
 - Source Protection Area
- Other Drinking Water Systems**
- 3 - Large Municipal Non-Residential System
 - 4 - Small Municipal Non-Residential System
 - 5 - Non-Municipal Year-Round Residential System
 - 6 - Non-Municipal Seasonal Residential System
 - 7 - Large Non-Municipal Non-Residential System
 - 8 - Small Non-Municipal Non-Residential System



Trent Conservation Coalition Source Protection Region
www.trentsourceprotection.on.ca

THIS MAP has been prepared for the purpose of meeting the provincial requirements under the Clean Water Act, 2006. If it is proposed to use it for another purpose, it would be advisable to first consult with the responsible Conservation Authority.

PRODUCED BY Lower Trent Conservation on behalf of the Trent Conservation Coalition Source Protection Committee, March 2010, with data supplied under licence by members of the Ontario Geospatial Data Exchange.

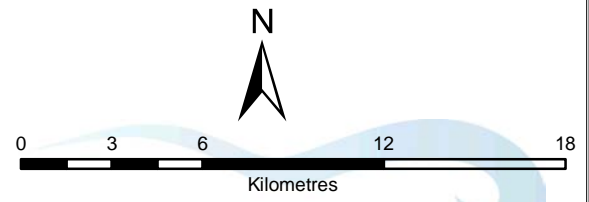




Lower Trent Source Protection Area Natural Vegetative Cover

Legend

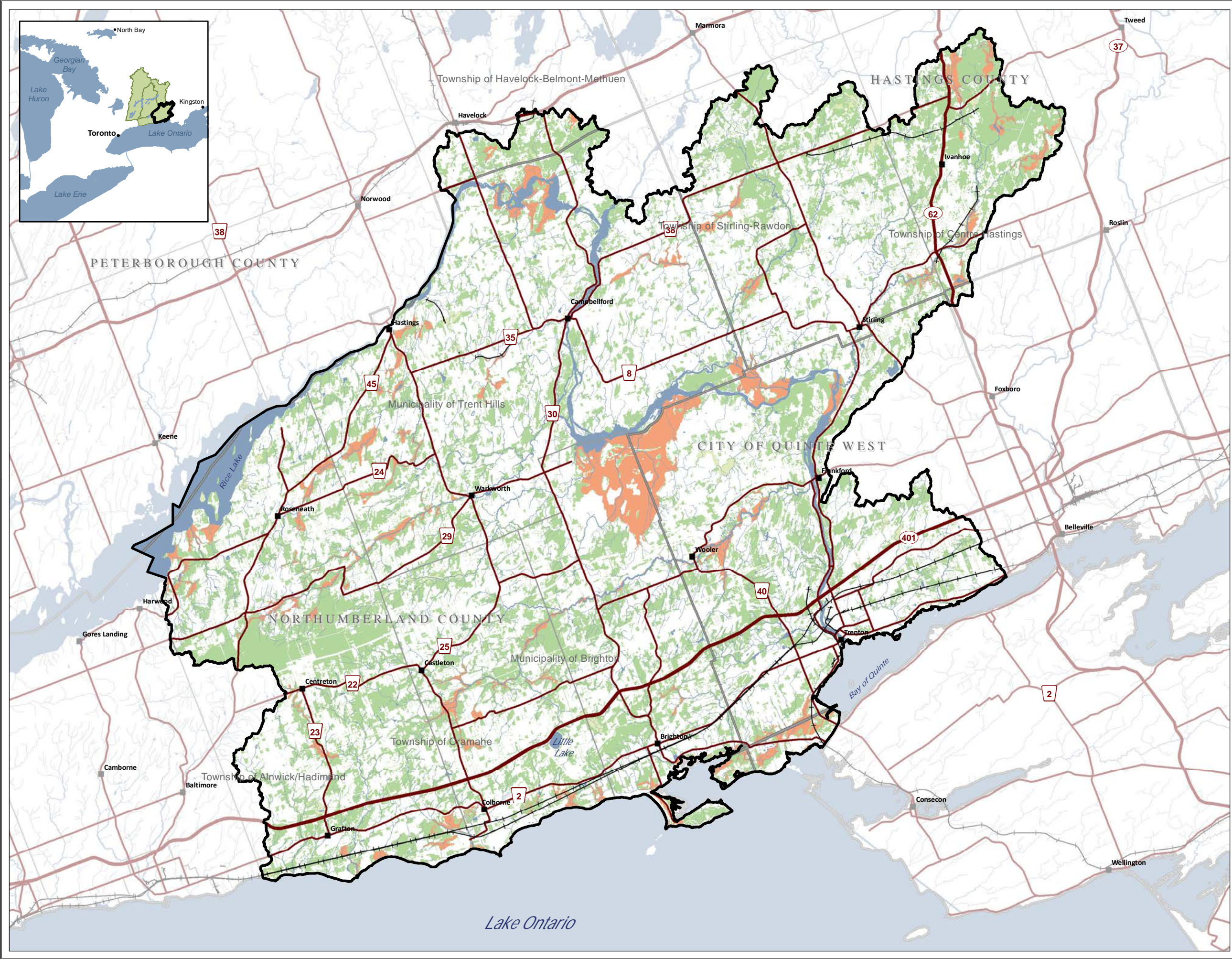
- Settlements
 - +— Railway
 - Highway
 - Multi-lane Highway
 - Watercourse
 - Lower Tier Municipality
 - Upper and Single Tier Municipality
 - Waterbody
 - Source Protection Area
- Wetland**
- Other
 - Provincially Significant
 - Wooded Area



**Trent Conservation Coalition
Source Protection Region**
www.trentsourceprotection.on.ca

THIS MAP has been prepared for the purpose of meeting the provincial requirements under the Clean Water Act, 2006. If it is proposed to use it for another purpose, it would be advisable to first consult with the responsible Conservation Authority.

PRODUCED BY Lower Trent Conservation on behalf of the Trent Conservation Coalition Source Protection Committee, March 2010, with data supplied under licence by members of the Ontario Geospatial Data Exchange.

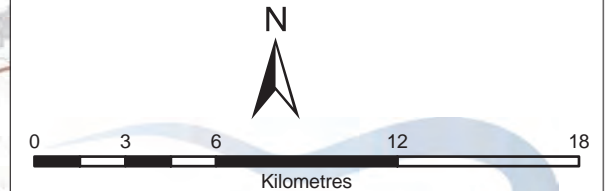




Lower Trent Source Protection Area Vegetated Riparian Area

Legend

- Settlements
- +— Railway
- Highway
- Multi-lane Highway
- Watercourse
- Lower Tier Municipality
- Upper and Single Tier Municipality
- Waterbody
- Source Protection Area
- Vegetated Riparian Area

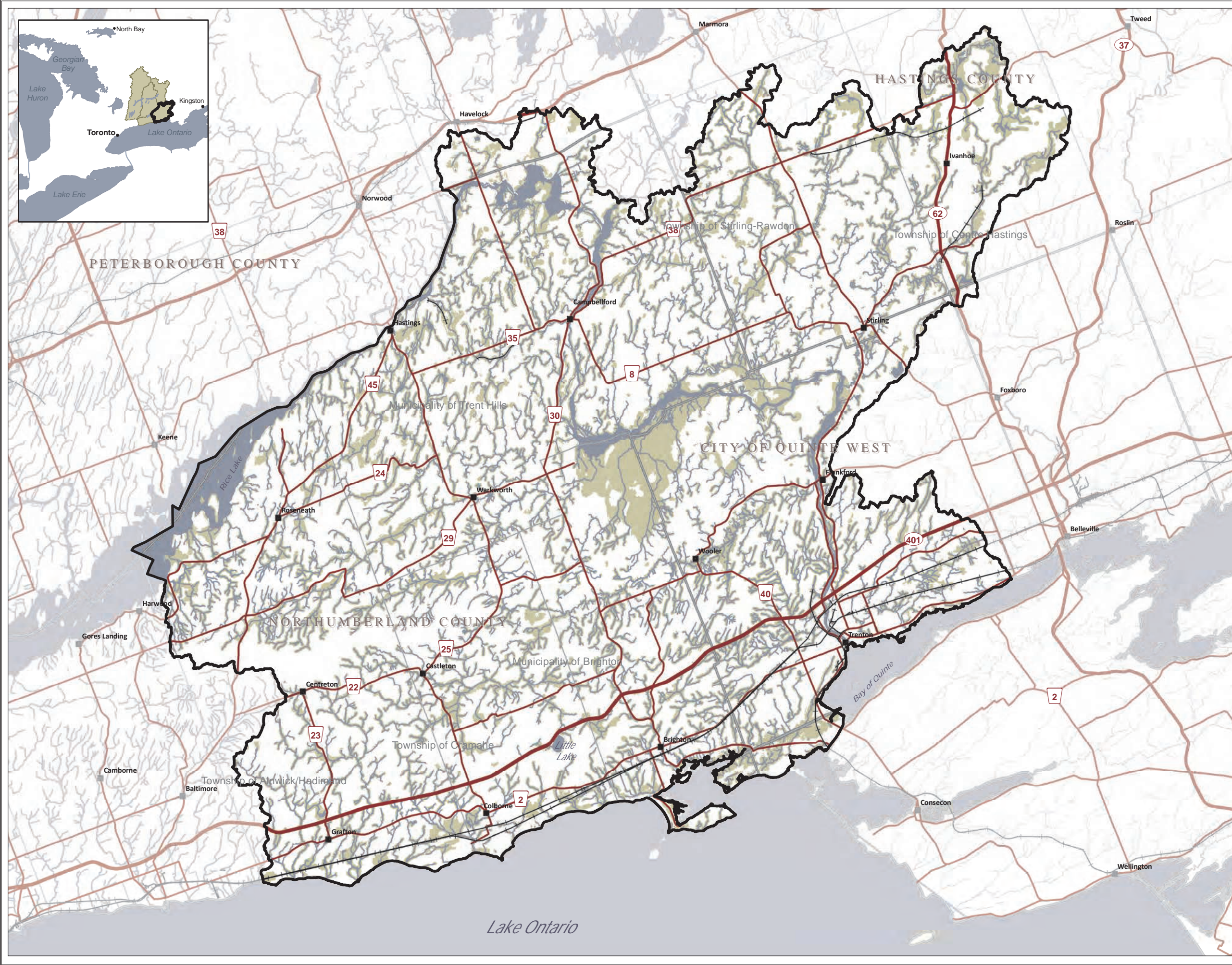


**Trent Conservation Coalition
Source Protection Region**

www.trentsourceprotection.on.ca

THIS MAP has been prepared for the purpose of meeting the provincial requirements under the Clean Water Act, 2006. If it is proposed to use it for another purpose, it would be advisable to first consult with the responsible Conservation Authority.

PRODUCED BY Lower Trent Conservation on behalf of the Trent Conservation Coalition Source Protection Committee, March 2010, with data supplied under licence by members of the Ontario Geospatial Data Exchange.



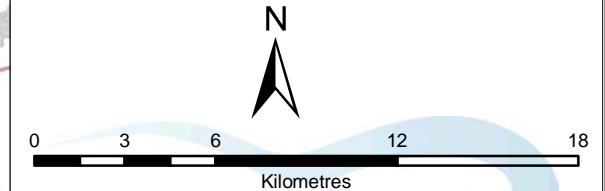


Lower Trent Source Protection Area

Aquatic Habitat by Stream Temperature

Legend

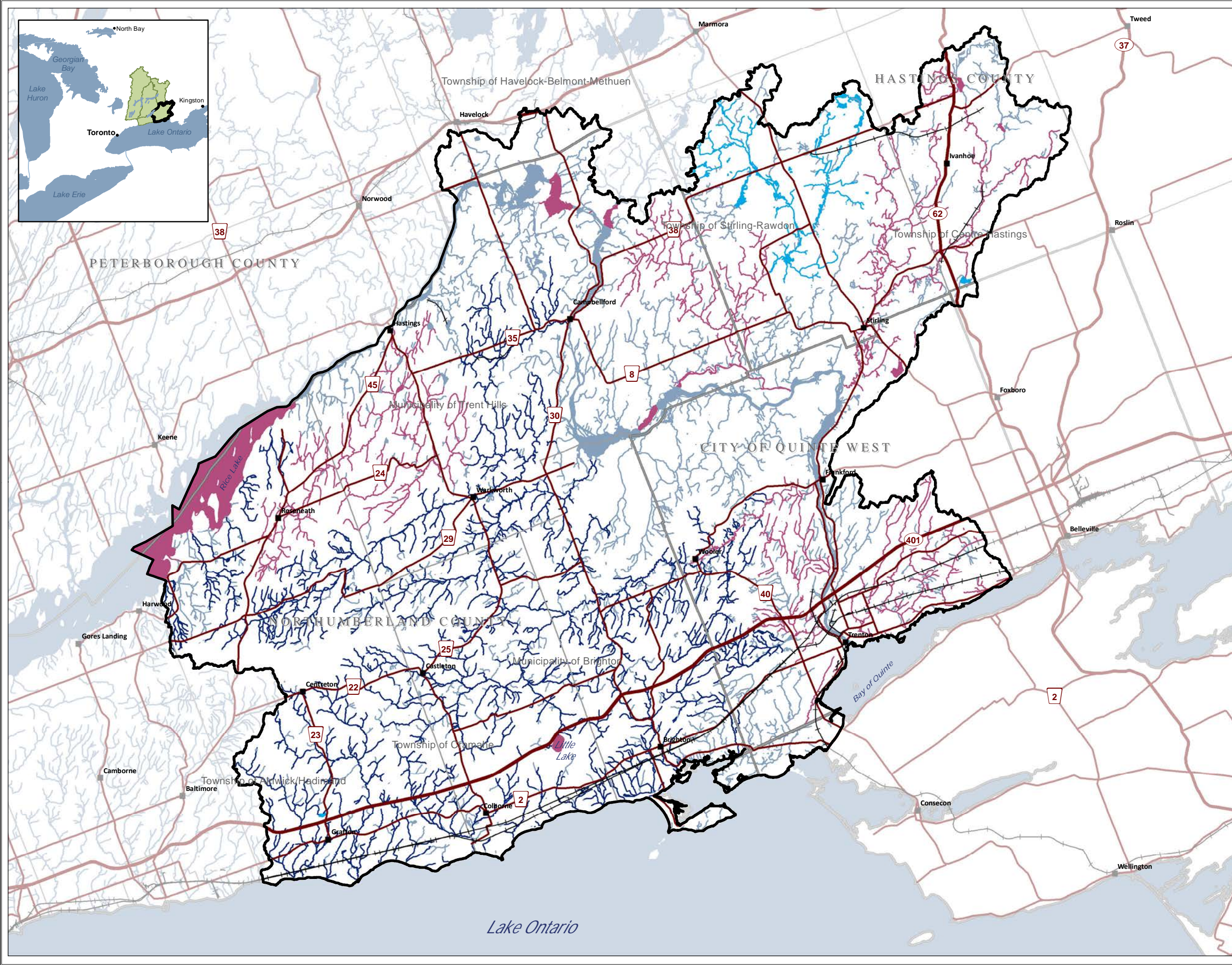
- Settlements
- +— Railway
- Highway
- Multi-lane Highway
- Lower Tier Municipality
- Upper and Single Tier Municipality
- Cold Water
- Cool Water
- Warm Water
- Unknown
- Source Protection Area



Trent Conservation Coalition Source Protection Region
www.trentsourceprotection.on.ca

THIS MAP has been prepared for the purpose of meeting the provincial requirements under the Clean Water Act, 2006. If it is proposed to use it for another purpose, it would be advisable to first consult with the responsible Conservation Authority.

PRODUCED BY Lower Trent Conservation on behalf of the Trent Conservation Coalition Source Protection Committee, March 2010, with data supplied under licence by members of the Ontario Geospatial Data Exchange.





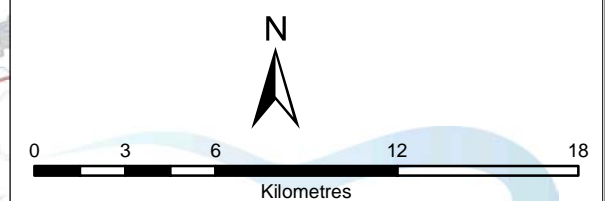
Lower Trent Source Protection Area Hilsenhoff Water Quality Index

Legend

- Settlements
- +— Railway
- Highway
- Multi-lane Highway
- Lower Tier Municipality
- Upper and Single Tier Municipality
- Watercourse
- Waterbody
- Source Protection Area

Hilsenhoff Scoring

- 0.00 - 3.75 (Excellent)
- 3.76 - 4.25 (Very Good)
- 4.26 - 5.00 (Good)
- 5.01 - 5.75 (Fair)
- 5.76 - 6.50 (Fairly Poor)
- 6.51 - 7.25 (Poor)
- 7.26 - 10.00 (Very Poor)



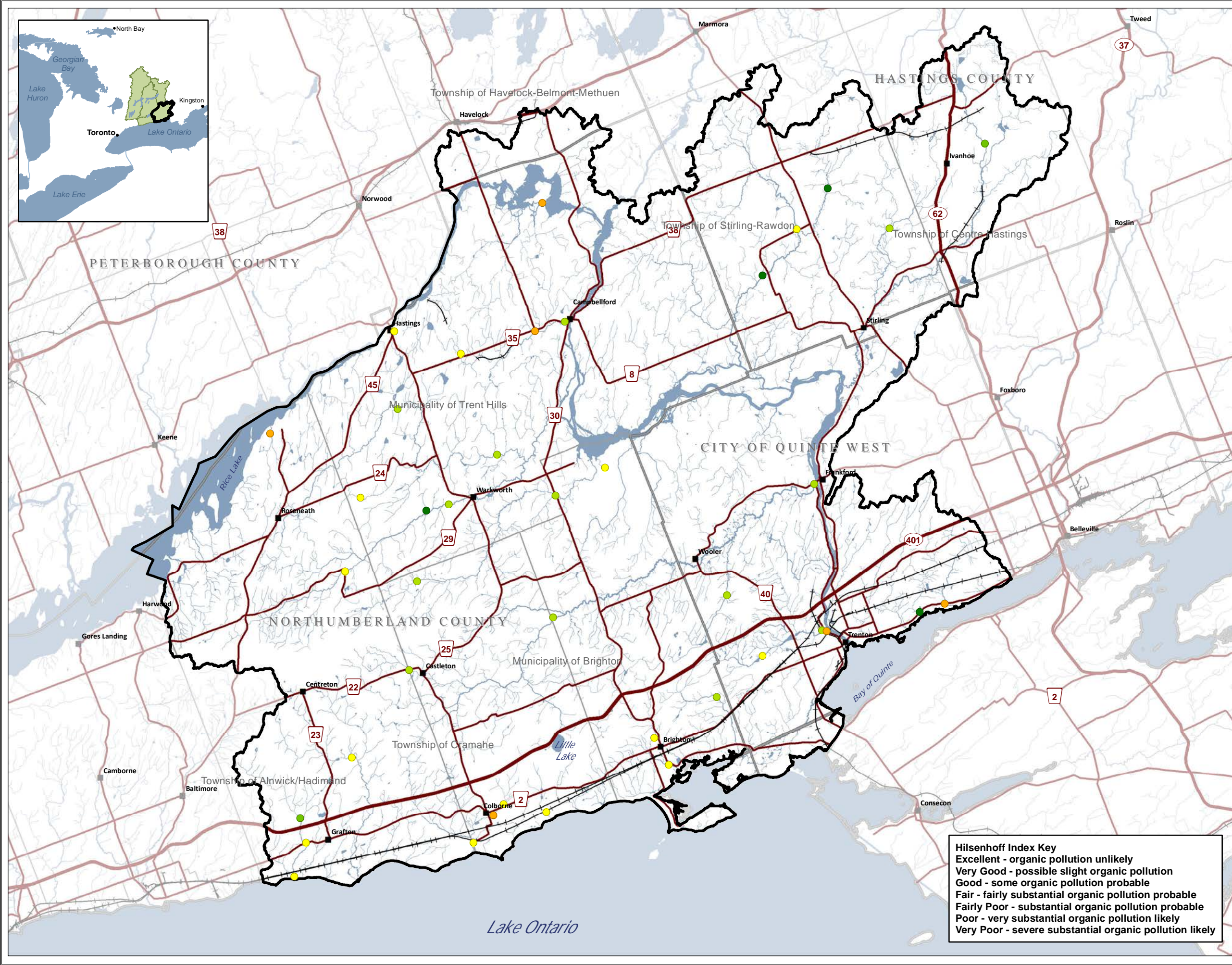
Trent Conservation Coalition Source Protection Region
www.trentsourceprotection.on.ca

THIS MAP has been prepared for the purpose of meeting the provincial requirements under the Clean Water Act, 2006. If it is proposed to use it for another purpose, it would be advisable to first consult with the responsible Conservation Authority.

PRODUCED BY Lower Trent Conservation on behalf of the Trent Conservation Coalition Source Protection Committee, March 2010, with data supplied under licence by members of the Ontario Geospatial Data Exchange.



Hilsenhoff Index Key
 Excellent - organic pollution unlikely
 Very Good - possible slight organic pollution
 Good - some organic pollution probable
 Fair - fairly substantial organic pollution probable
 Fairly Poor - substantial organic pollution probable
 Poor - very substantial organic pollution likely
 Very Poor - severe substantial organic pollution likely





Lower Trent Source Protection Area Simpson's Species Diversity Index

Legend

- Settlements
- Railway
- Highway
- Multi-lane Highway
- Watercourse
- Lower Tier Municipality
- Upper and Single Tier Municipality
- Waterbody
- Source Protection Area

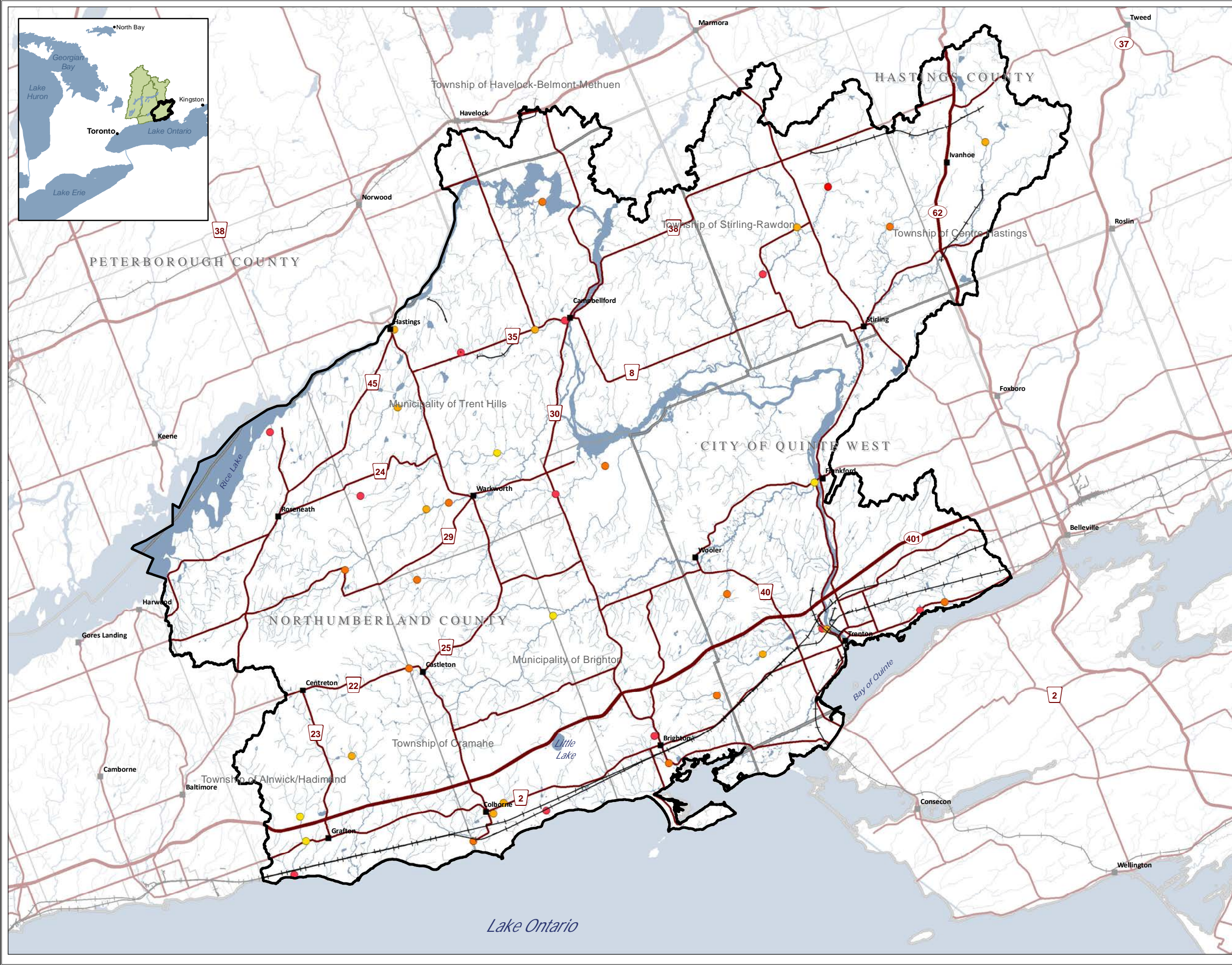
- Simpson Scoring**
- 0 - 0.1
 - 0.11 - 0.2
 - 0.21 - 0.3
 - 0.31 - 0.4
 - 0.41 - 0.5
 - 0.51 - 0.6
 - 0.61 - 0.7
 - 0.71 - 0.8
 - 0.81 - 0.9
 - 0.91 - 1.0
- Note: 1 = High Diversity
0 = Low Diversity



Trent Conservation Coalition Source Protection Region
www.trentsourceprotection.on.ca

THIS MAP has been prepared for the purpose of meeting the provincial requirements under the Clean Water Act, 2006. If it is proposed to use it for another purpose, it would be advisable to first consult with the responsible Conservation Authority.

PRODUCED BY Lower Trent Conservation on behalf of the Trent Conservation Coalition Source Protection Committee, March 2010, with data supplied under licence by members of the Ontario Geospatial Data Exchange.



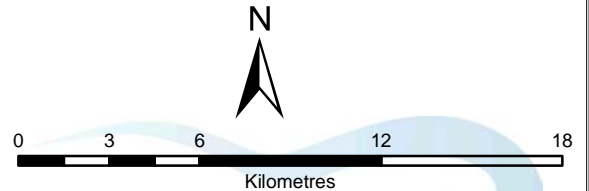


Lower Trent Source Protection Area

Surface Water Quality Monitoring Sites

Legend

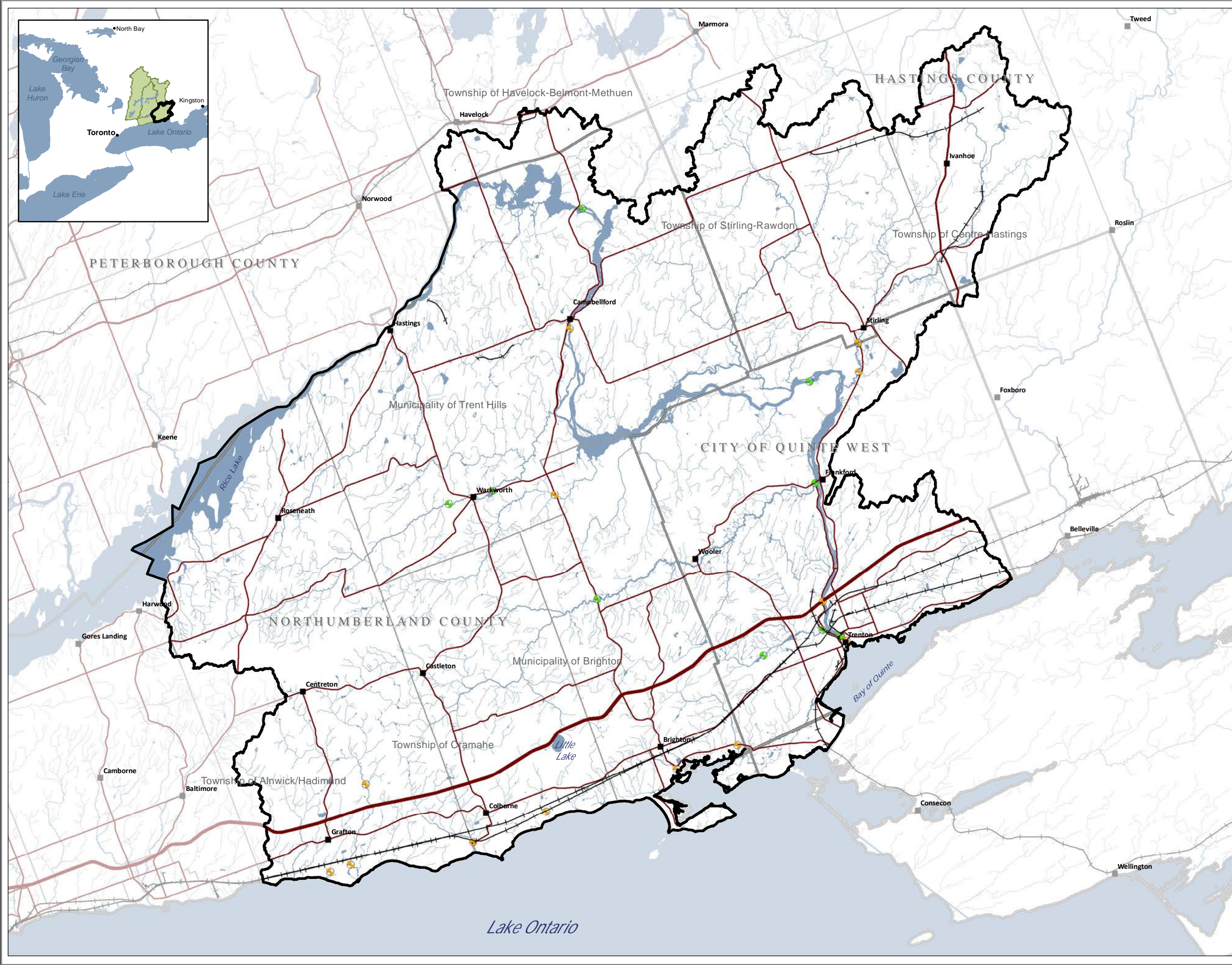
- Settlements
- Railway
- Highway
- Multi-lane Highway
- Watercourse
- Lower Tier Municipality
- Upper and Single Tier Municipality
- Waterbody
- ▭ Source Protection Area
- Active Surface Water Quality Sites
- Historic Surface Water Quality Sites



Trent Conservation Coalition Source Protection Region
www.trentsourceprotection.on.ca

THIS MAP has been prepared for the purpose of meeting the provincial requirements under the Clean Water Act, 2006. If it is proposed to use it for another purpose, it would be advisable to first consult with the responsible Conservation Authority.

PRODUCED BY Lower Trent Conservation on behalf of the Trent Conservation Coalition Source Protection Committee, March 2010, with data supplied under licence by members of the Ontario Geospatial Data Exchange.



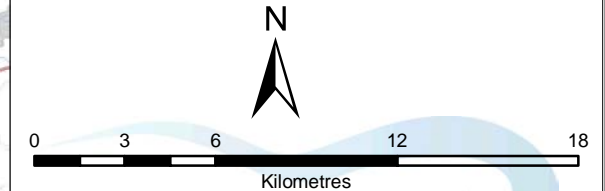


Lower Trent Source Protection Area

Groundwater Quality Monitoring Sites

Legend

- Settlements
- +— Railway
- Highway
- Multi-lane Highway
- Lower Tier Municipality
- Upper and Single Tier Municipality
- Watercourse
- Waterbody
- Source Protection Area
- Groundwater Quality Sites



Trent Conservation Coalition Source Protection Region
www.trentsourceprotection.on.ca

THIS MAP has been prepared for the purpose of meeting the provincial requirements under the Clean Water Act, 2006. If it is proposed to use it for another purpose, it would be advisable to first consult with the responsible Conservation Authority.

PRODUCED BY Lower Trent Conservation on behalf of the Trent Conservation Coalition Source Protection Committee, March 2010, with data supplied under licence by members of the Ontario Geospatial Data Exchange.

