

Approved

Trent Assessment Report - MAP BOOK

Approved October 1, 2014
Effective January 1, 2015
Updated August 20, 2019

Volume 3 of 3

Trent Source Protection Areas:
Crowe Valley Source Protection Area
Kawartha-Haliburton Source Protection Area
Lower Trent Source Protection Area
Otonabee-Peterborough Source Protection Area



Made possible through the support
of the Government of Ontario

TABLE OF CONTENTS

CHAPTER 1: Introduction

- Map 1-1: Trent Conservation Coalition Source Protection Region
- Map 1-2: Trent Source Protection Areas

CHAPTER 2: Watershed Characterization Maps

2.2 Kawartha-Haliburton Source Protection Area

- Map 2-1(KH): Watershed Boundaries
- Map 2-2(KH): Subwatershed Areas
- Map 2-3(KH): Physiographic Regions
- Map 2-4(KH): Areas of Settlement
- Map 2-5(KH): Municipal Boundaries
- Map 2-6(KH): Population
- Map 2-7(KH): Population Density
- Map 2-8(KH): First Nation Reserves
- Map 2-9(KH): Federal Lands
- Map 2-10(KH): Municipal Residential Drinking Water Systems
- Map 2-11(KH): Other Drinking Water Systems
- Map 2-12(KH): Natural Vegetative Cover
- Map 2-13(KH): Vegetated Riparian Area
- Map 2-14(KH): Aquatic Habitats by Stream Temperature
- Map 2-15(KH): Hilsenhoff Water Quality Index
- Map 2-16(KH): Simpson's Species Diversity Index
- Map 2-17(KH): Surface Water Quality Monitoring Sites
- Map 2-18(KH): Groundwater Quality Monitoring Sites

2.3 Otonabee-Peterborough Source Protection Area

- Map 2-1(OP): Watershed Boundaries
- Map 2-2(OP): Subwatershed Areas
- Map 2-3(OP): Physiographic Regions
- Map 2-4(OP): Areas of Settlement
- Map 2-5(OP): Municipal Boundaries
- Map 2-6(OP): Population
- Map 2-7(OP): Population Density
- Map 2-8(OP): First Nation Reserves
- Map 2-9(OP): Federal Lands
- Map 2-10(OP): Municipal Residential Drinking Water Systems
- Map 2-11(OP): Other Drinking Water Systems
- Map 2-12(OP): Natural Vegetative Cover
- Map 2-13(OP): Vegetated Riparian Area
- Map 2-14(OP): Aquatic Habitats by Stream Temperature
- Map 2-15(OP): Hilsenhoff Water Quality Index
- Map 2-16(OP): Simpson's Species Diversity Index
- Map 2-17(OP): Surface Water Quality Monitoring Sites
- Map 2-18(OP): Groundwater Quality Monitoring Sites

2.4 Crowe Valley Source Protection Area

- Map 2-1(CV): Watershed Boundaries
- Map 2-2(CV): Subwatershed Areas
- Map 2-3(CV): Physiographic Regions
- Map 2-4(CV): Areas of Settlement
- Map 2-5(CV): Municipal Boundaries
- Map 2-6(CV): Population
- Map 2-7(CV): Population Density
- Map 2-8(CV): Federal Lands
- Map 2-9(CV): Municipal Residential Drinking Water Systems
- Map 2-10(CV): Other Drinking Water Systems
- Map 2-11(CV): Natural Vegetative Cover
- Map 2-12(CV): Vegetated Riparian Area
- Map 2-13(CV): Aquatic Habitats by Stream Temperature
- Map 2-14(CV): Hilsenhoff Water Quality Index
- Map 2-15(CV): Simpson's Species Diversity Index
- Map 2-16(CV): Surface Water Quality Monitoring Sites
- Map 2-17(CV): Groundwater Quality Monitoring Sites

2.5 Lower Trent Source Protection Area

- Map 2-1(LT): Watershed Boundaries
- Map 2-2(LT): Subwatershed Areas
- Map 2-3(LT): Physiographic Regions
- Map 2-4(LT): Areas of Settlement
- Map 2-5(LT): Municipal Boundaries
- Map 2-6(LT): Population
- Map 2-7(LT): Population Density
- Map 2-8(LT): First Nation Reserves
- Map 2-9(LT): Federal Lands
- Map 2-10(LT): Municipal Residential Drinking Water Systems
- Map 2-11(LT): Other Drinking Water Systems
- Map 2-12(LT): Natural Vegetative Cover
- Map 2-13(LT): Vegetated Riparian Area
- Map 2-14(LT): Aquatic Habitats by Stream Temperature
- Map 2-15(LT): Hilsenhoff Water Quality Index
- Map 2-16(LT): Simpson's Species Diversity Index
- Map 2-17(LT): Surface Water Quality Monitoring Sites
- Map 2-18(LT): Groundwater Quality Monitoring Sites

CHAPTER 3:

Water Budget & Water Quantity Stress Assessment

3.2 Conceptual Water Budget

- Map 3-1: Conceptual Water Budget Subwatersheds
- Map 3-2: Climate Stations
- Map 3-3: Average Annual Precipitation Surface
- Map 3-4: Average Annual Temperature Surface
- Map 3-5: Zones of Uniform Meteorology (A)
- Map 3-6: Zones of Uniform Meteorology (B)
- Map 3-7: Average Annual Evapotranspiration
- Map 3-8: Bedrock Geology
- Map 3-9: Surficial Geology
- Map 3-10: Overburden Thickness
- Map 3-11: Surface Topography
- Map 3-12: Bedrock Topography
- Map 3-13: Physiographic Regions
- Map 3-14: Hydrologic Soil Groups
- Map 3-15: Land Cover
- Map 3-16: Waterbodies/Watercourses
- Map 3-17: Water Control Structures
- Map 3-18: Hydrometric Stations
- Map 3-19: Flow Distribution Map
- Map 3-20: Aquatic Habitat by Stream Temperature
- Map 3-21: Water Table Elevation
- Map 3-22: Potentiometric Surface
- Map 3-23: Groundwater-Surface Water Interactions
- Map 3-24: Provincial Groundwater Monitoring Network Wells
- Map 3-25: Agricultural Water Usage
- Map 3-26: Municipal Wells and Intakes
- Map 3-27: Drinking Water and Wastewater Treatment Plants
- Map 3-28: Registered Domestic Wells
- Map 3-29: Permitted Water Usage by Purpose of Permit
- Map 3-30: Permitted Water Usage by Max. Permitted Volume

3.3 Tier 1 Water Budget & Water Quantity Stress Assessment

- Map 3-31: Subwatersheds
- Map 3-32: Gaining/Losing Subwatersheds
- Map 3-33: Surface Water Stress Levels
- Map 3-34: Groundwater Stress Levels

3.4 Tier 2 Water Budget & Water Quantity Stress Assessment

- Map 3-35: Lindsay Intake – Defined Subwatershed
- Map 3-36: Discretization of Lindsay Subwatershed
- Map 3-37: Subwatershed containing Havelock wells
- Map 3-38: Subwatershed containing Colborne wells
- Map 3-39: Subwatershed containing Brighton wells
- Map 3-40: Surface Water Subwatershed Stress Level
- Map 3-41: Groundwater Subwatershed Stress Level

**CHAPTER 4:
Surface Water Systems: Water Quality Risk Assessment**

Name of Drinking Water System	Intake Protection Zones 1 & 2 Map Set	Intake Protection Zone 3 Map Set
Norland	Maps 4-1a,b,c	Maps 4-1d,e,f,g,h
Kinmount	Maps 4-2a,b,c	Maps 4-2d,e,f,g,h
Fenelon Falls	Maps 4-3a,b,c	Maps 4-3d,e,f,g,h
Lindsay	Maps 4-4a,b,c	Maps 4-4d,e,f,g,h
Southview Estates	Maps 4-5a,b,c	Maps 4-5d,e,f,g,h
Bobcaygeon	Maps 4-6a,b,c	Maps 4-6d,e,f,g,h
Lakefield	Maps 4-7a,b,c	Maps 4-7d,e,f,g,h
Peterborough	Maps 4-8a,b,c	Maps 4-8d,e,f,g,h
Hastings	Maps 4-9a,b,c	Maps 4-9d,e,f,g,h
Marmora	Maps 4-10a,b,c	Maps 4-10d,e,f,g,h
Campbellford	Maps 4-11a,b,c	Maps 4-11d,e,f,g,h
Warkworth	Maps 4-12a,b,c	Maps 4-12d,e,f,g,h
Frankford	Maps 4-13a,b,c	Maps 4-13d,e,f,g,h
Trenton	Maps 4-14a,b,c	Maps 4-14d,e,f,g,h
Bayside	Maps 4-15a,b,c	Maps 4-15d,e,f,g,h

**CHAPTER 5:
Groundwater Systems: Water Quality Risk Assessment**

Name of Drinking Water System	Wellhead Protection Areas A to D Map Set	Wellhead Protection Area E Map Set
Birch Point	Maps 5-1a,b,c	
Canadiana Shores	Maps 5-2a,b,c	Maps 5-2d,e
Janetville	Maps 5-3a,b,c	
King's Bay	Maps 5-4a,b,c	
Manorview	Maps 5-5a,b,c	Maps 5-5d,e
Mariposa Estates	Maps 5-6a,b,c	
Pinewood	Maps 5-7a,b,c	
Pleasant Point	Maps 5-8a,b,c	Maps 5-8d,e
Sonya	Maps 5-9a,b,c	
Victoria Glen	Maps 5-10a,b,c	
Victoria Place	Maps 5-11a,b,c	
Woodfield	Maps 5-12a,b,c	
Woods of Manilla	Maps 5-13a,b,c	
Blackstock	Maps 5-14a,b,c	
Greenbank	Maps 5-15a,b,c	
Port Perry	Maps 5-16a,b,c	
Alpine Village	Maps 5-17a,b,c	
Buckhorn Lake Estates	Maps 5-18a,b,c	Maps 5-18d,e
Cardiff	Maps 5-19a,b,c	Maps 5-19d,e
Dyno Estates	Maps 5-20a,b,c	
Lutterworth Pines	Maps 5-21a,b,c	
Minden	Maps 5-22a,b,c	
Norwood	Maps 5-23a,b,c	

Name of Drinking Water System	Wellhead Protection Areas A to D Map Set	Wellhead Protection Area E Map Set
Havelock	Maps 5-24a,b,c	Maps 5-24d,e
Crystal Springs	Maps 5-25a,b,c	Maps 5-25d,e
Keene Heights	Maps 5-26a,b,c	
Millbrook	Maps 5-27a,b,c	
Stirling	Maps 5-28a,b,c	Maps 5-28d,e Map 5-28f (issue contributing area)
Brighton	Maps 5-29a,b,c	
Colborne	Maps 5-30a,b,c	
Grafton	Maps 5-31a,b,c	
Fraserville	Maps 5-32a,b,c	Map 5-32d,e

CHAPTER 6: Landscape-Scale Groundwater Analyses

6.1 Groundwater Vulnerability & Highly Vulnerable Aquifers

- Map 6-1: Groundwater Vulnerability
- Map 6-2: Highly Vulnerable Aquifers

6.2 Significant Groundwater Recharge Areas

- Map 6-7: Significant Groundwater Recharge Areas

6.3 Water Quality Risk Assessment

Highly Vulnerable Aquifers

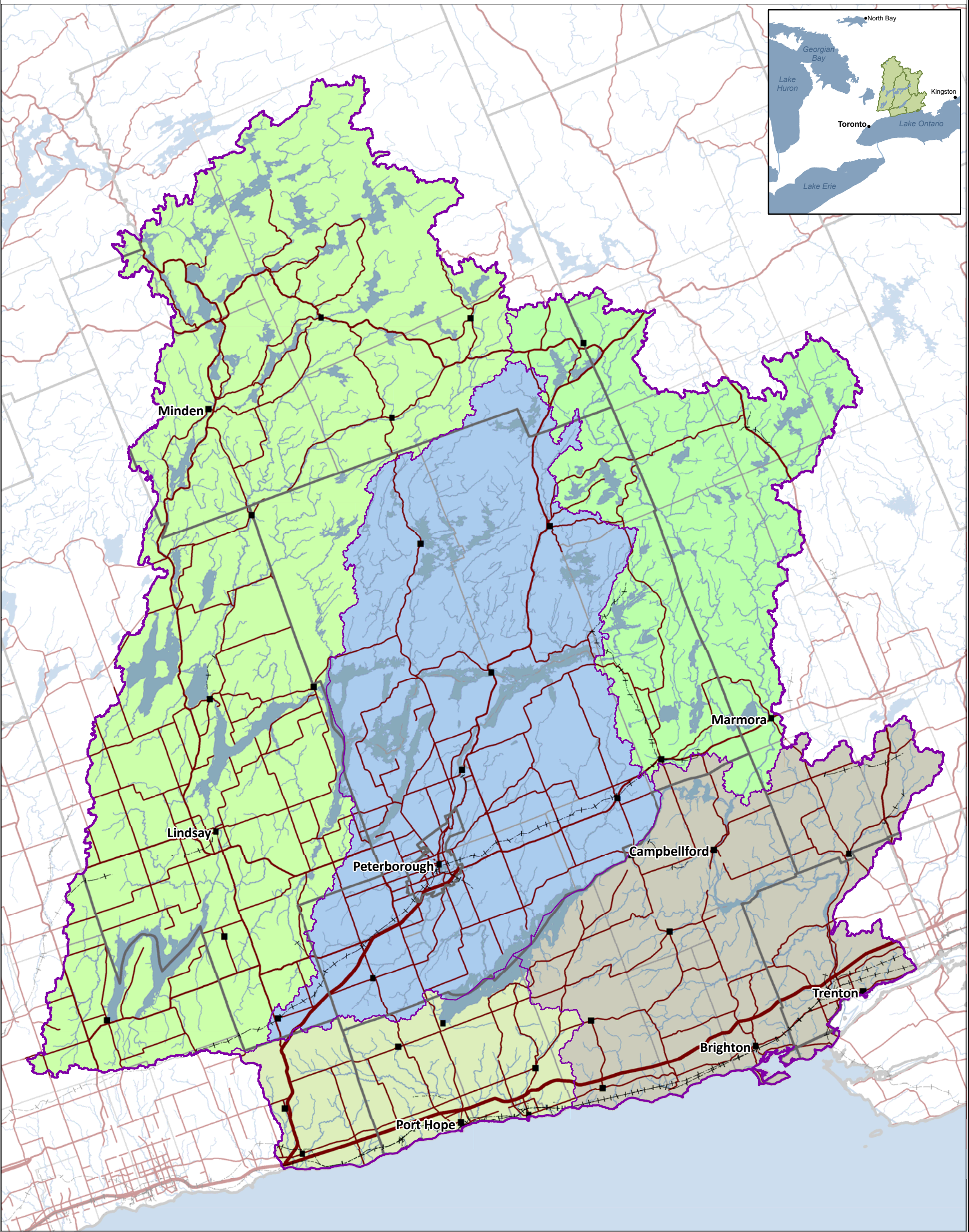
- Maps 6-3a,b,c,d: Kawartha-Haliburton SPA
- Maps 6-4a,b,c,d: Otonabee-Peterborough SPA
- Maps 6-5a,b,c,d: Crowe Valley SPA
- Maps 6-6a,b,c,d: Lower Trent SPA

Significant Groundwater Recharge Areas

- Maps 6-8a,b,c,d: Kawartha-Haliburton SPA
- Maps 6-9a,b,c,d: Otonabee-Peterborough SPA
- Maps 6-10a,b,c,d: Crowe Valley SPA
- Maps 6-11a,b,c,d: Lower Trent SPA

Tier 2 Significant Groundwater Recharge Areas

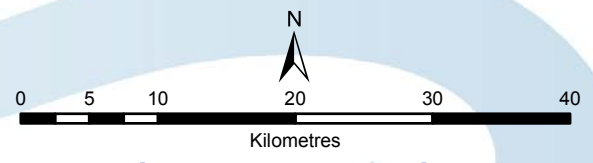
- Maps 6-12a,b,c,d: Crowe 4 Subwatershed
- Maps 6-13 a,b,c,d: Lake Ontario 1 & 3 Subwatersheds



This map has been prepared for the purpose of meeting the provincial requirements under the Clean Water Act, 2006. If it is proposed to use it for another purpose, it would be advisable to first consult with the responsible conservation authority.

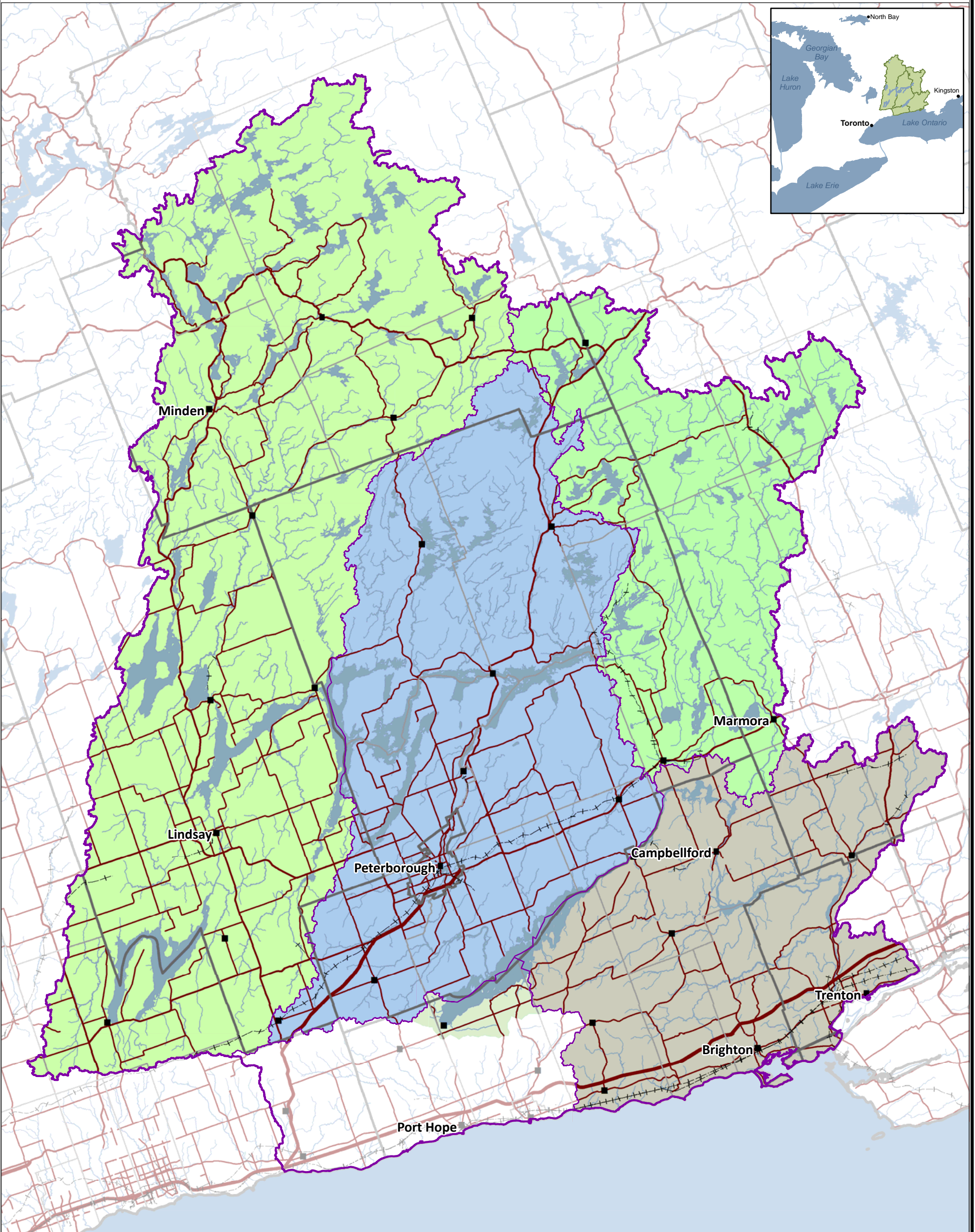
PRODUCED BY Lower Trent Conservation on behalf of the Trent Conservation Coalition Source Protection Committee, March 2011, with data supplied under licence by members of the Ontario Geospatial Data Exchange.

- Legend**
- Settlements
 - + Railways
 - Watercourse
 - Roads
 - Highways
 - Multi Lane Highways
 - Source Protection Region
 - Source Protection Areas
 - Upper and Single Tier Municipality
 - Lower Tier Municipality
 - Waterbody
 - Kawartha-Haliburton Source Protection Area
 - Otonabee-Peterborough Source Protection Area
 - Crowe Valley Source Protection Area
 - Ganaraska Region Source Protection Area
 - Lower Trent Source Protection Area



Trent Conservation Coalition Source Protection Region
www.trentsourceprotection.on.ca





This map has been prepared for the purpose of meeting the provincial requirements under the Clean Water Act, 2006. If it is proposed to use it for another purpose, it would be advisable to first consult with the responsible conservation authority.

PRODUCED BY Lower Trent Conservation on behalf of the Trent Conservation Coalition Source Protection Committee, March 2011, with data supplied under licence by members of the Ontario Geospatial Data Exchange.

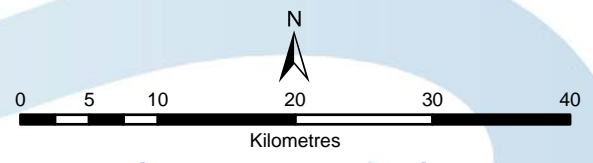
Made possible through the support of the Government of Ontario

Legend

- Settlements
- +-- Railways
- Watercourse
- Roads
- Highways
- Multi Lane Highways
- Source Protection Region
- Source Protection Areas
- Upper and Single Tier Municipality
- Lower Tier Municipality
- Waterbody

Trent Source Protection Areas

- Kawartha-Haliburton Source Protection Area
- Crowe Valley Source Protection Area
- Lower Trent Source Protection Area
- Otonabee-Peterborough Source Protection Area
- Portion of Ganaraska SPA within Trent River Watershed



Trent Conservation Coalition Source Protection Region
www.trentsourceprotection.on.ca