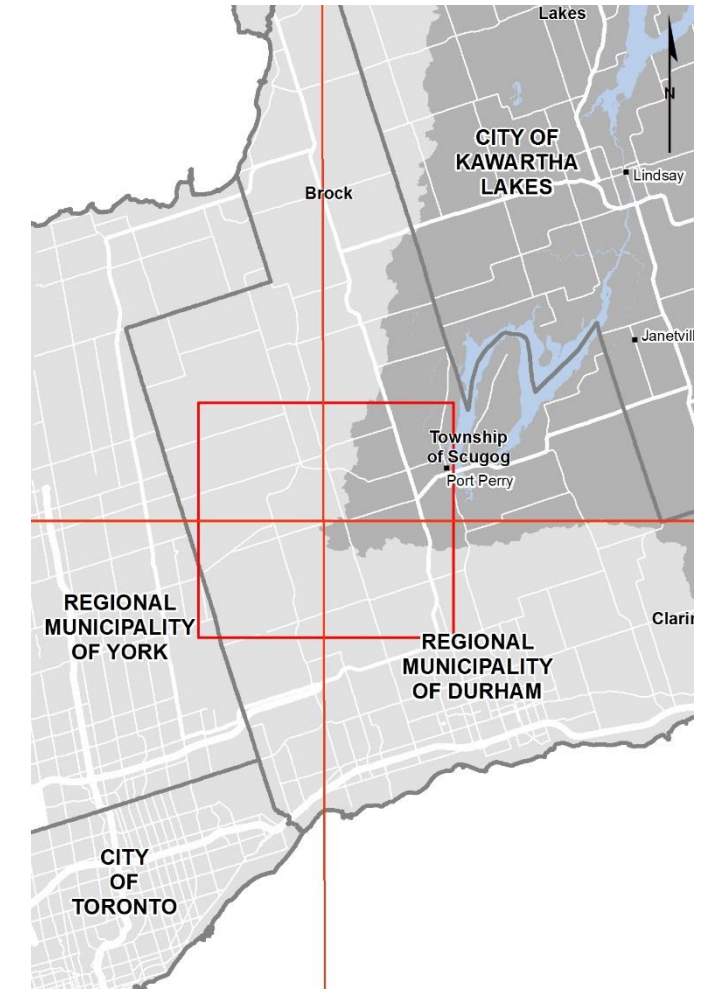
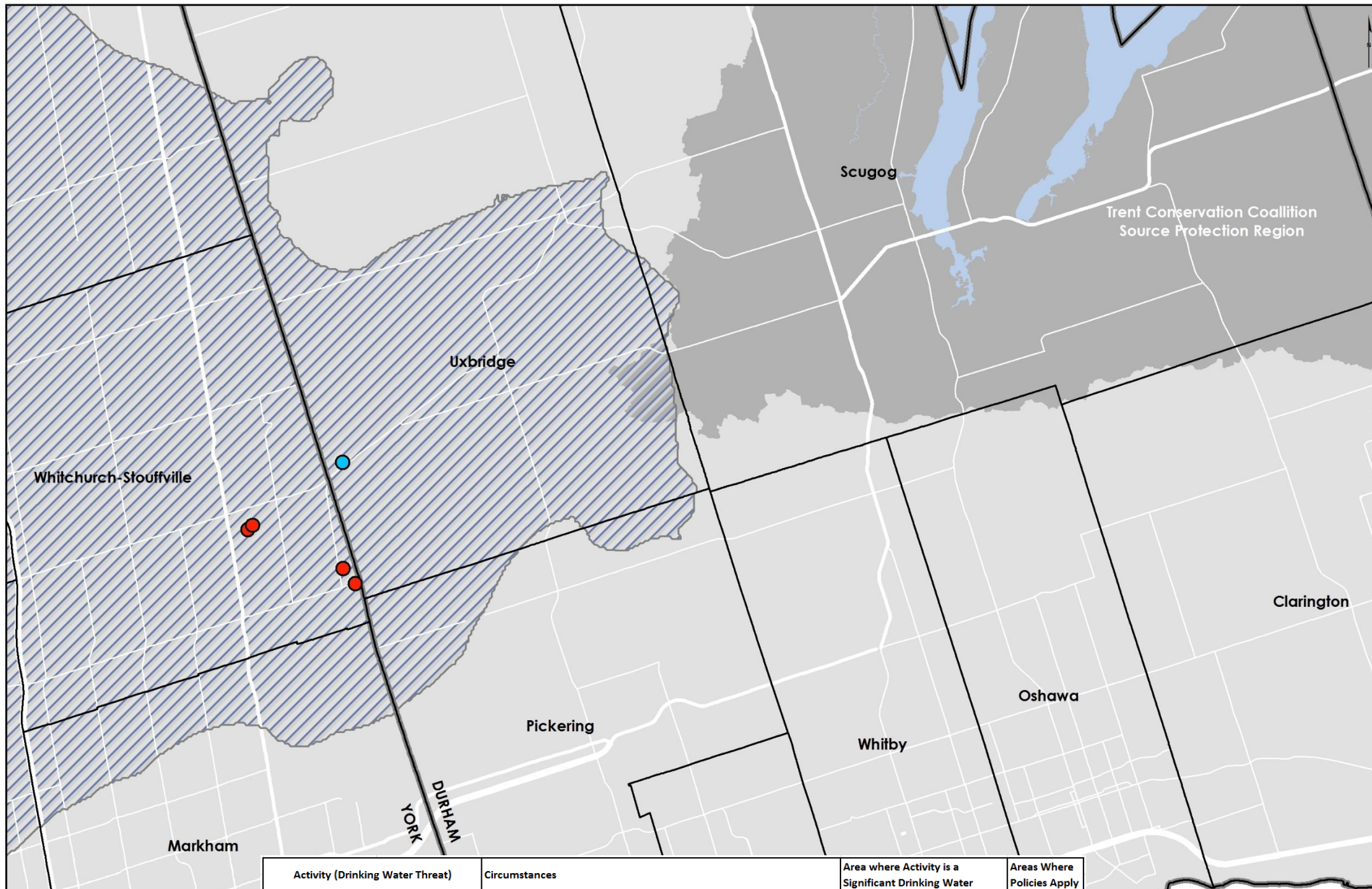


Water Quantity Demand Q1 & Recharge Q2

Kawartha-Haliburton Source Protection Area

Tier 3 Water Budget



Activity (Drinking Water Threat)	Circumstances	Area where Activity is a Significant Drinking Water	Areas Where Policies Apply
An activity that takes water from an aquifer or a surface water body without returning the water taken to the same aquifer or surface water body.	<ol style="list-style-type: none"> 1. An increase to an existing taking or a new taking. 2. The water is or would be taken from within a WHPA-Q1. 3. Section 34 of the <i>Ontario Water Resources Act</i> requires a permit to take water in respect of the increase or new taking. 4. Despite the local area from which the water is or would be taken having been assessed for the purposes of the latest assessment report to have a risk level of moderate in accordance with Part IX, the local area would be assessed to have a risk level of significant if the increase to the existing taking or the new taking were factored into the risk level assessment. 	The local area from which the water is or would be taken if the area relates to one or more wells and it was assessed to have a risk level of moderate in accordance with Part IX of Technical Rules (2009).	
An activity that reduces recharge to an aquifer.	<ol style="list-style-type: none"> 1. A modified activity or a new activity. 2. The activity is or would be wholly or partly located within a WHPA-Q2. 3. Despite the local area from which the water is or would be taken having been assessed for the purposes of the latest assessment report to have a risk level of moderate in accordance with Part IX, the local area would be assessed to have a risk level of significant if the modified activity were factored into the risk level assessment. 	The local area from which the water is or would be taken if the area relates to one or more wells and it was assessed to have a risk level of moderate in accordance with Part IX of Technical Rules (2009).	

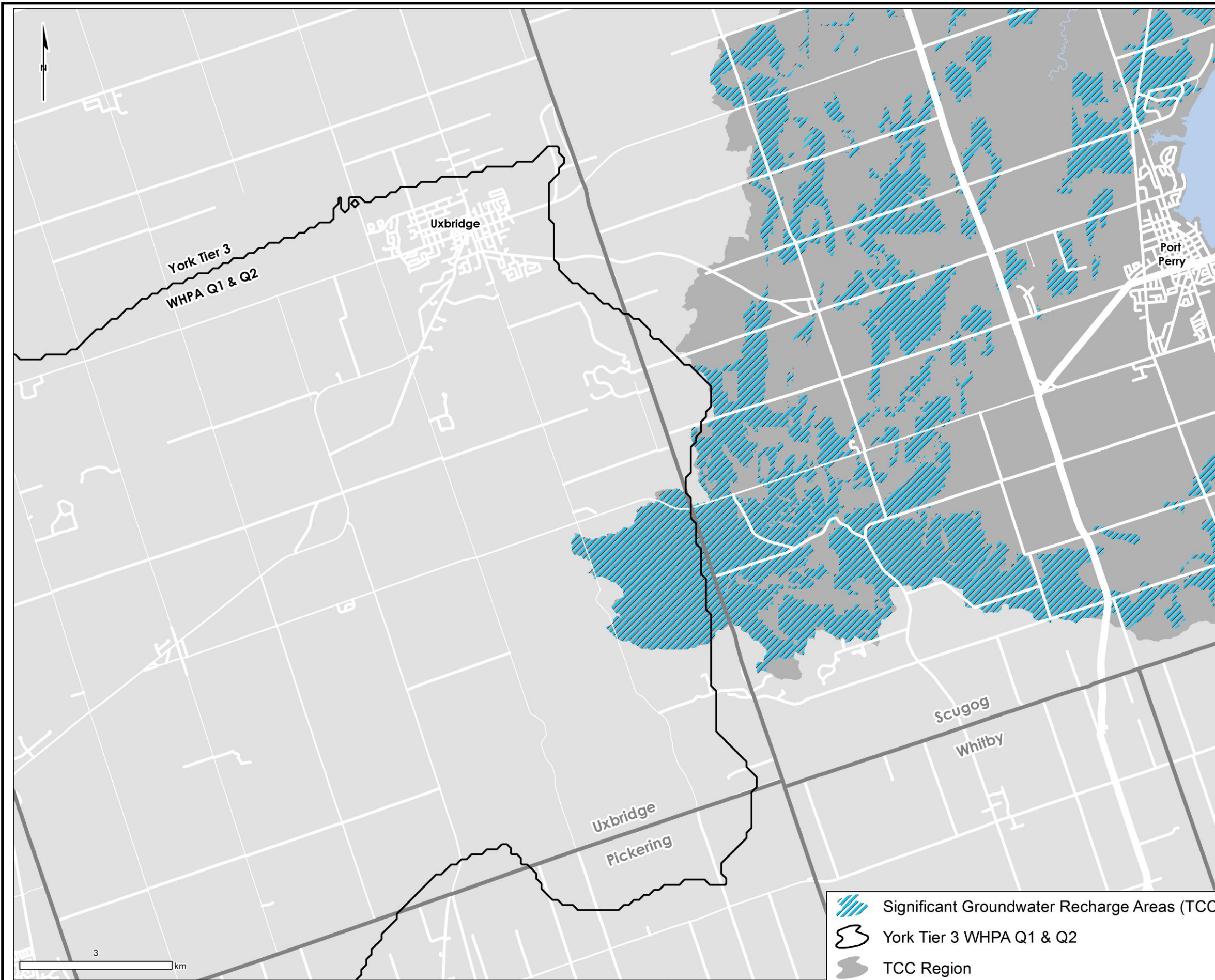
PRODUCED BY Lower Trent Conservation on behalf of the Trent Conservation Coalition Source Protection Committee, 2015.




Waterbodies and watercourses located within the extent of an intake protection zone or wellhead protection area are included in that zone.



Trent Conservation Coalition
Source Protection Region

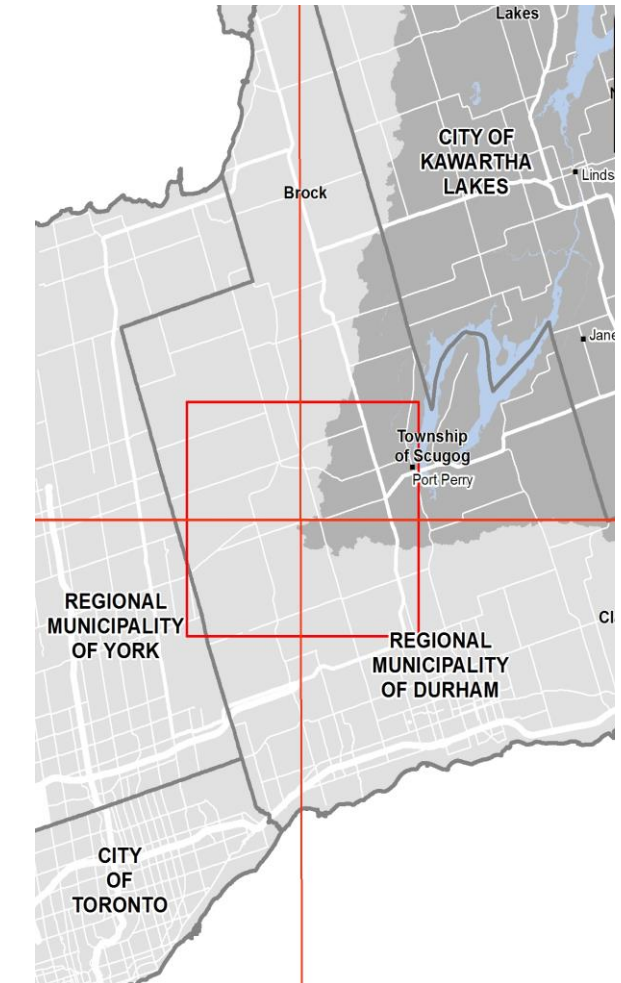
www.trentsourceprotection.on.ca



-  Significant Groundwater Recharge Areas (TCC)
-  York Tier 3 WHPA Q1 & Q2
-  TCC Region



Water Quantity: Policy Z-1 WHPA Q2 and SGRA - Kawartha-Haliburton Source Protection Area Tier 3 Water Budget



PRODUCED BY Lower Trent Conservation on behalf of the Trent Conservation Coalition Source Protection Committee, 2015.

Waterbodies and watercourses located within the extent of an intake protection zone or wellhead protection area are included in that zone.



**Trent Conservation Coalition
Source Protection Region**

www.trentsourceprotection.on.ca