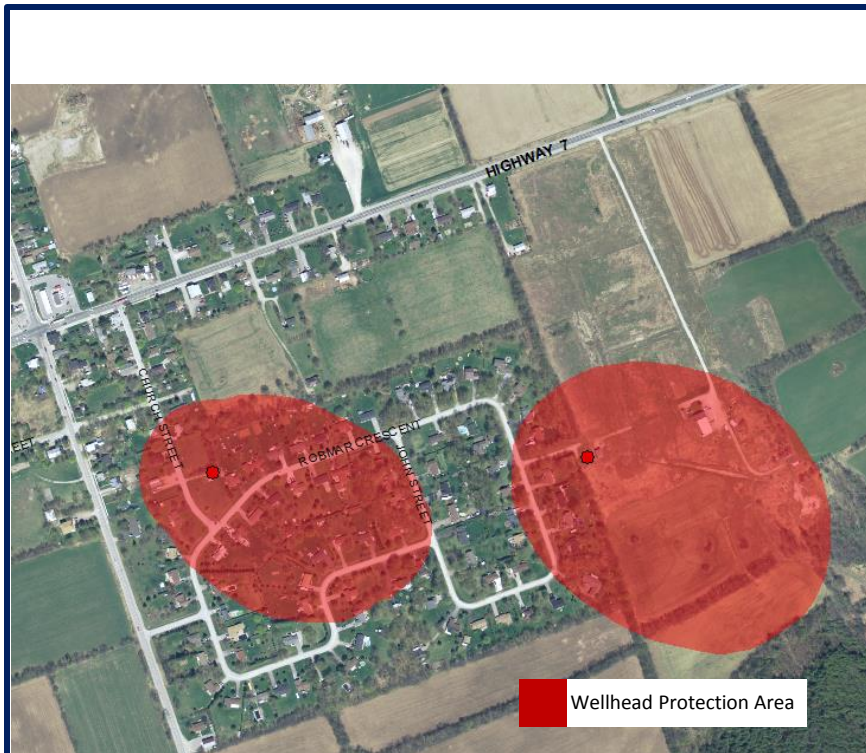


The Woods of Manilla Municipal Drinking Water System is 1 of 53 municipal residential drinking water systems in the Trent Conservation Coalition Source Protection Region, and 1 of 22 such systems in the Kawartha-Haliburton Source Protection Area.

On January 1, 2015, policies set out in the Trent Source Protection Plan came into effect to better protect the source water for the municipal drinking water system by reducing or eliminating *significant* threat(s) associated with certain land based activities. The Plan was developed under the *Clean Water Act* in response to the Walkerton Inquiry.

A drinking water threat is a land-based *activity* that can impact the quality of a municipal drinking water source (due to a spill or leak). *Significant* drinking water threat activities can only occur in Vulnerable Areas such as the Wellhead Protection Area for this municipal drinking water system (shown on right and on reverse). Plan policies are intended to reduce or minimize the significant threat posed by such activities.



Wellhead Protection Area

Types of Drinking Water Threats

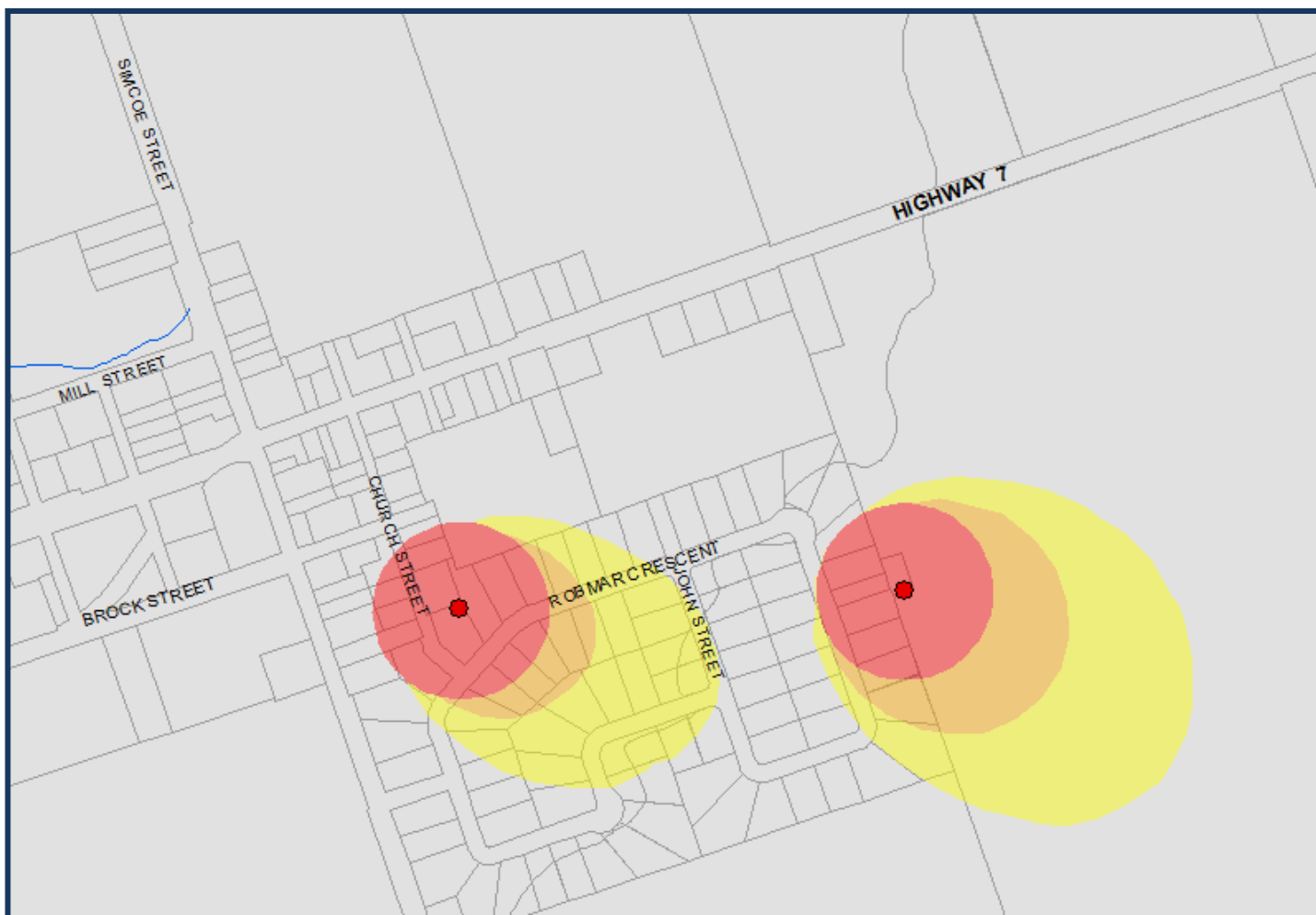


To learn more about these threats visit www.trentsourceprotection.on.ca

Water Source	Groundwater
Owned By	City of Kawartha Lakes
Operating Authority	Ontario Clean Water Agency
Serviced Population	200 (approximately)
Annual Pump Rate	53 cubic metres (average)
Well Depth	Well 1: 45.7 metres Well 2: 53.9 metres (main production well)
Aquifer Type	Confined overburden
Treatment System	Disinfection with sodium hypochlorite

Drinking water threats can only occur in the **Wellhead Protection Area shown below** and as illustrated on the Policy Applicability Map included in the Trent Source Protection Plan. The location, scale and nature of an activity determine if it poses a low, moderate or *significant* threat to the municipal drinking water source. Policies in the Trent Source Protection Plan only apply to *significant* drinking water threats.

- The area within a 100-metre radius of a wellhead.
- Contaminants may reach the municipal wellhead (●) in 2 years or less if spilled or leaked in this area.
- Contaminants may reach the municipal wellhead (●) in 5 years or less if spilled or leaked in this area.



Kawartha-Haliburton Source Protection Authority Lead
(705) 328-2271

Risk Management Official and Inspector
(705) 328-2271

The Trent Source Protection Plan is available at www.trentsourceprotection.on.ca