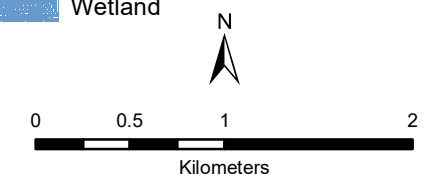


**Norland Municipal Surface Water System**  
**Kawartha - Haliburton Source Protection Area**

**Managed Land, Livestock Density & Total Impervious Surface Area**

**Legend**

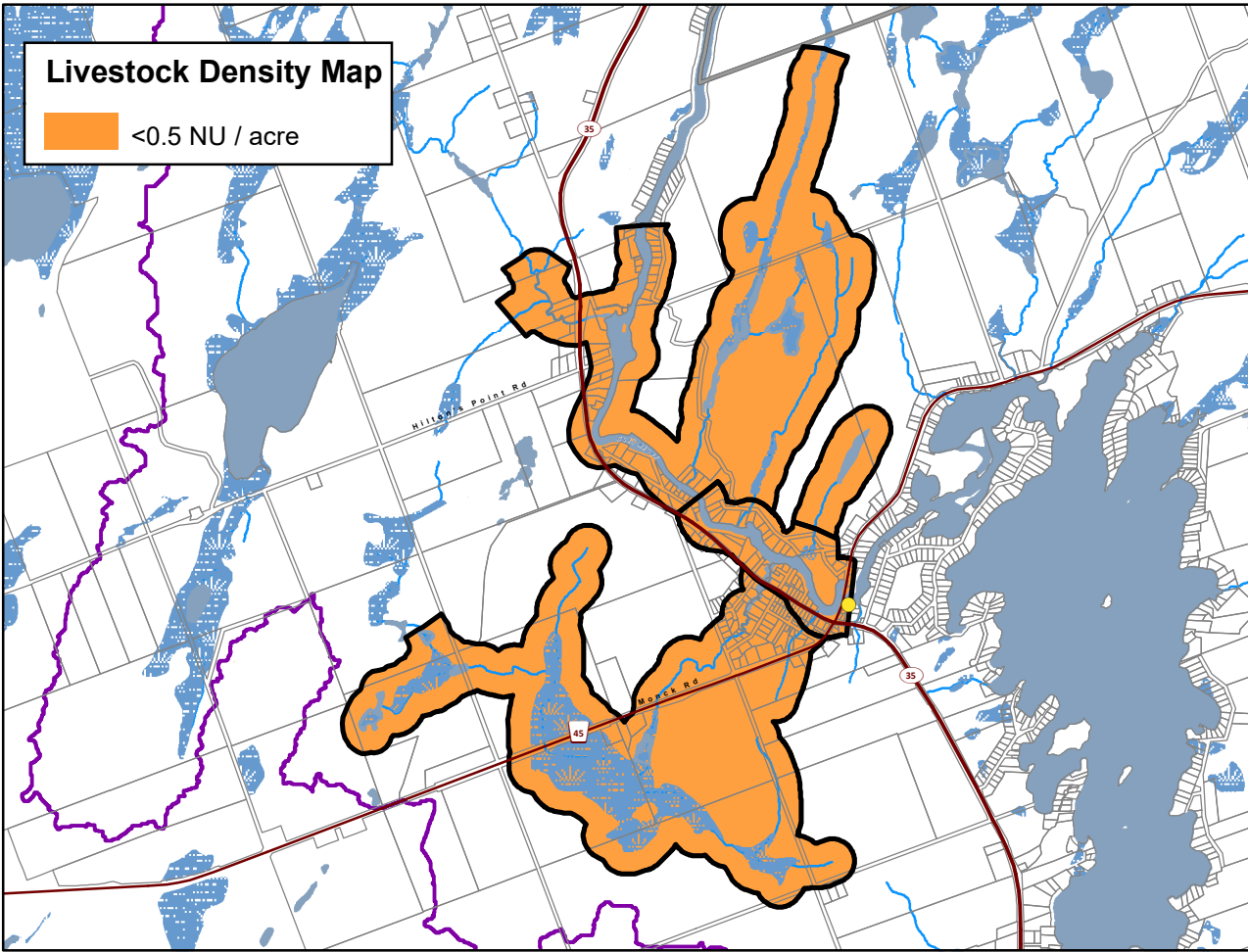
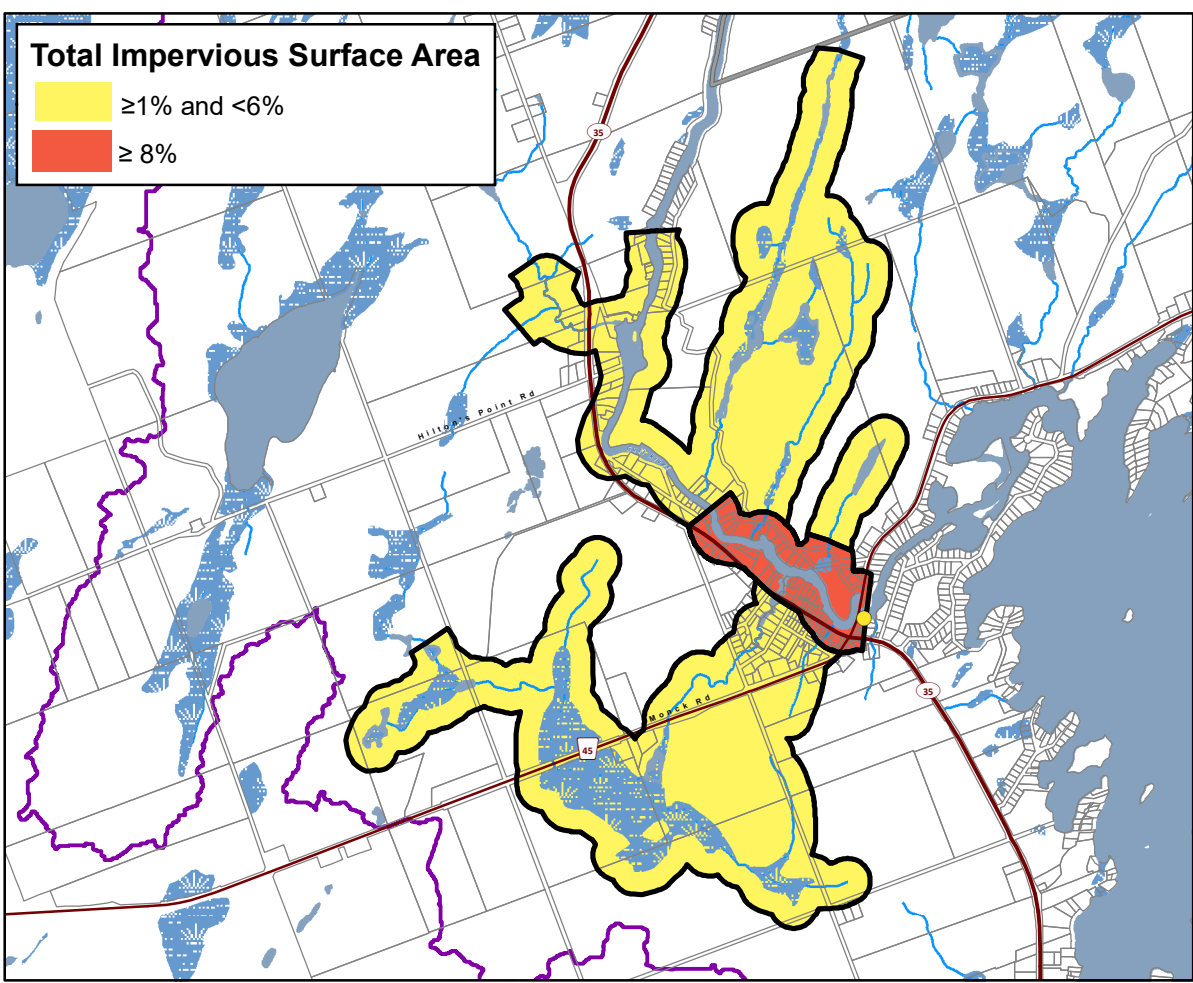
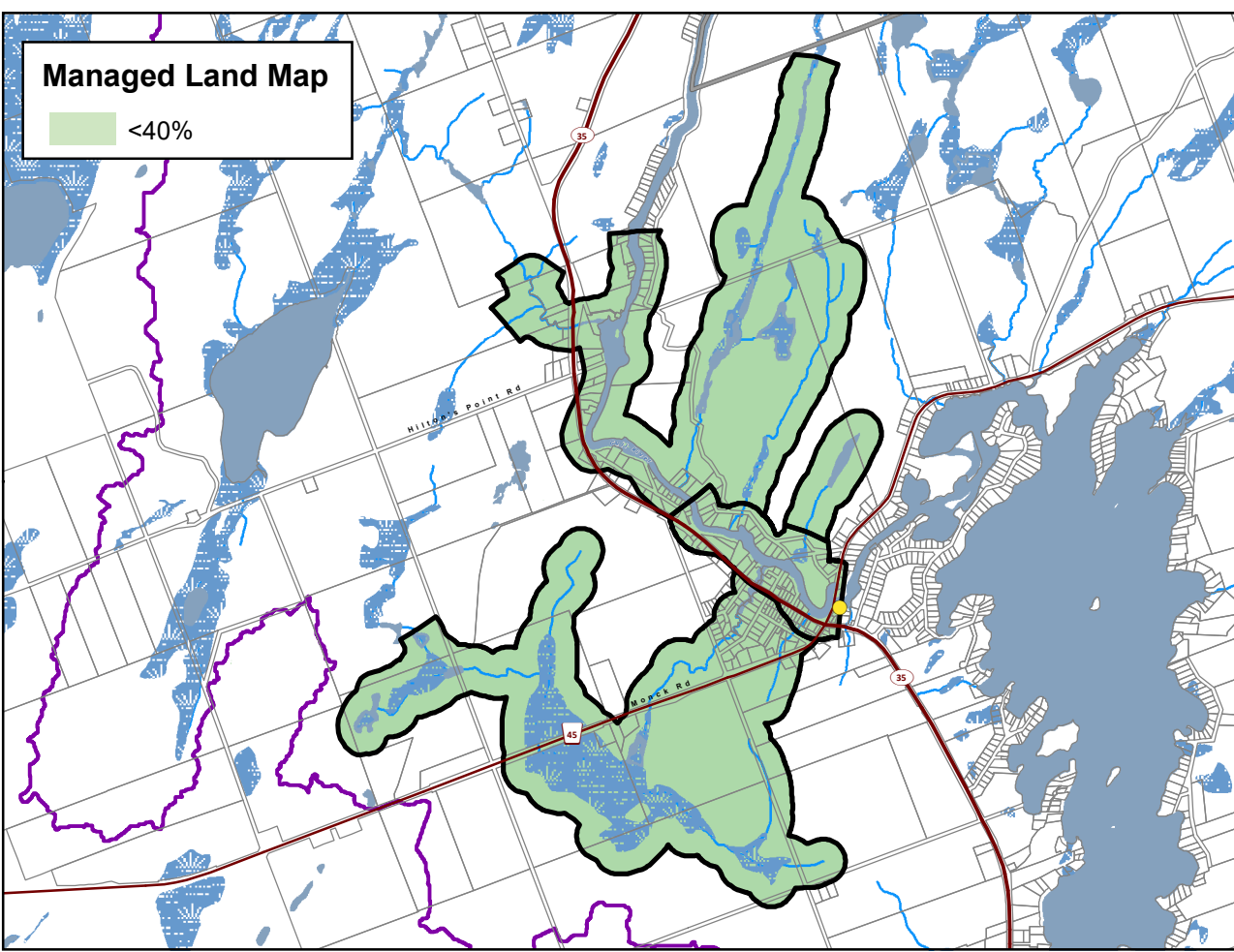
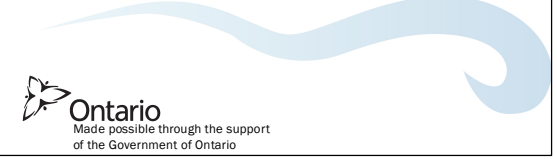
- Surface Water Intake
- Railway
- Watercourse
- Main Road
- Highway
- Multi Lane Highway
- Property Boundary
- Source Protection Region
- Source Protection Area
- Lower and Single Tier Municipality
- Upper Tier Municipality
- Intake Protection Zones
- Waterbody
- Wetland



**Trent Conservation Coalition Source Protection Region**  
[www.trentsourceprotection.on.ca](http://www.trentsourceprotection.on.ca)

This map has been prepared for the purpose of meeting the provincial requirements under the Clean Water Act, 2006. If it is proposed to use it for another purpose, it would be advisable to first consult with the responsible conservation authority.


PRODUCED BY Lower Trent Conservation on behalf of the Trent Conservation Coalition Source Protection Committee, March 2011, (Updated July 2016) with data supplied under licence by members of the Ontario Geospatial Data Exchange.

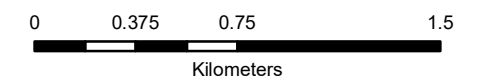


**Kinmount Municipal Surface Water System**  
**Kawartha-Haliburton Source Protection Area**

**Managed Land, Livestock Density & Total Impervious Surface Area**

**Legend**

-  Surface Water Intake
-  Railway
-  Watercourse
-  Main Road
-  Highway
-  Multi Lane Highway
-  Property Boundary
-  Source Protection Region
-  Source Protection Area
-  Lower and Single Tier Municipality
-  Upper Tier Municipality
-  Intake Protection Zones
-  Waterbody
-  Wetland

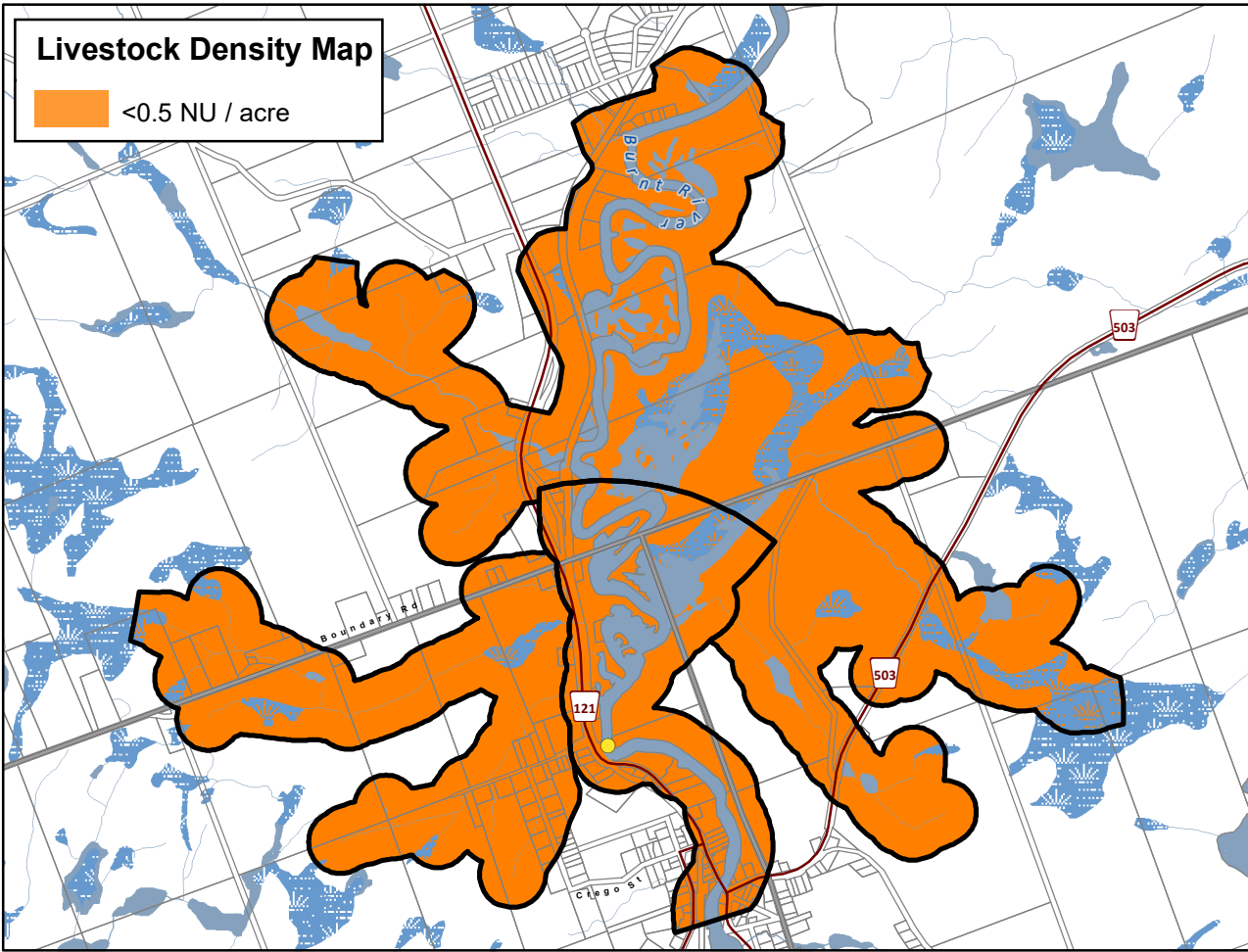
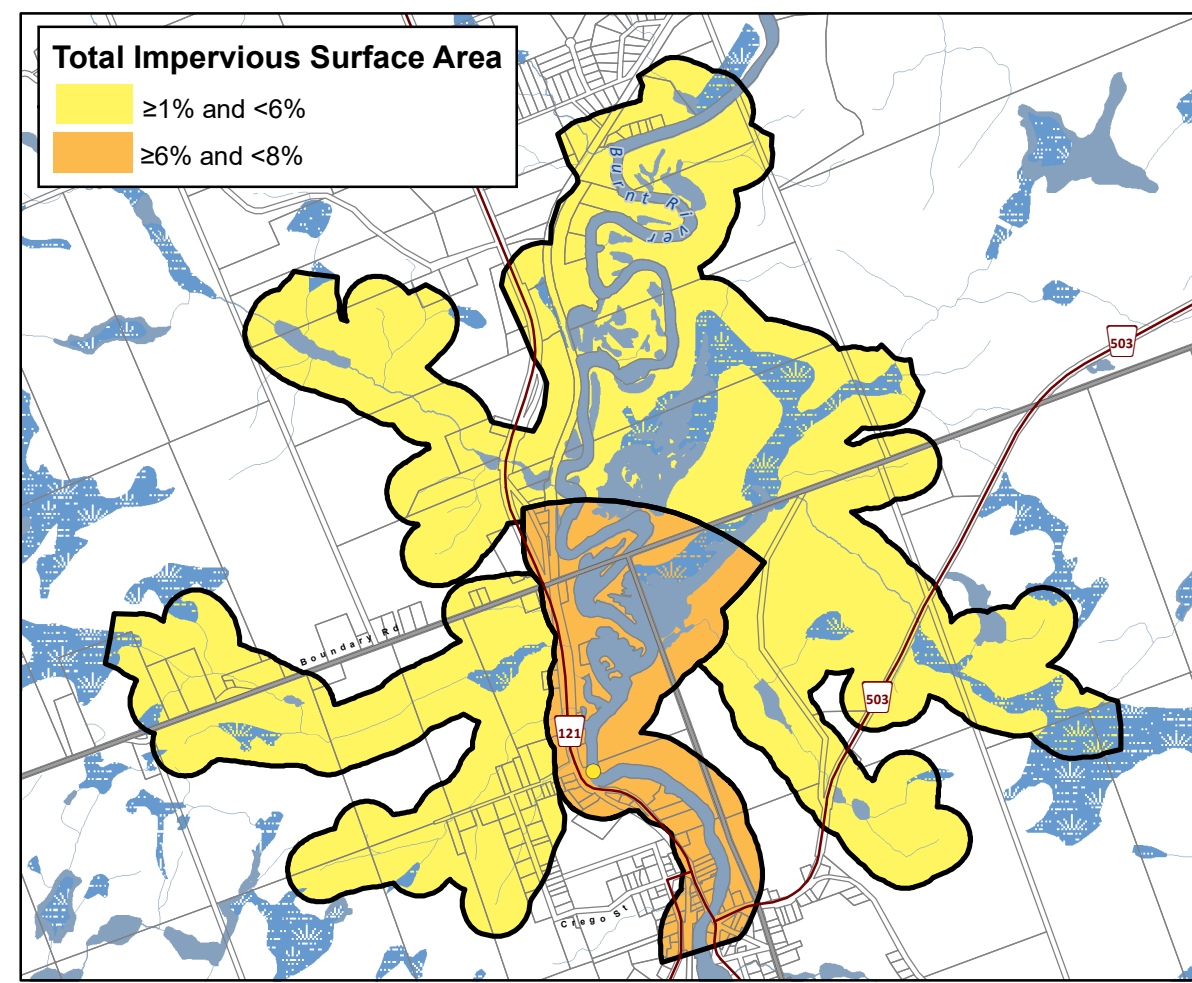
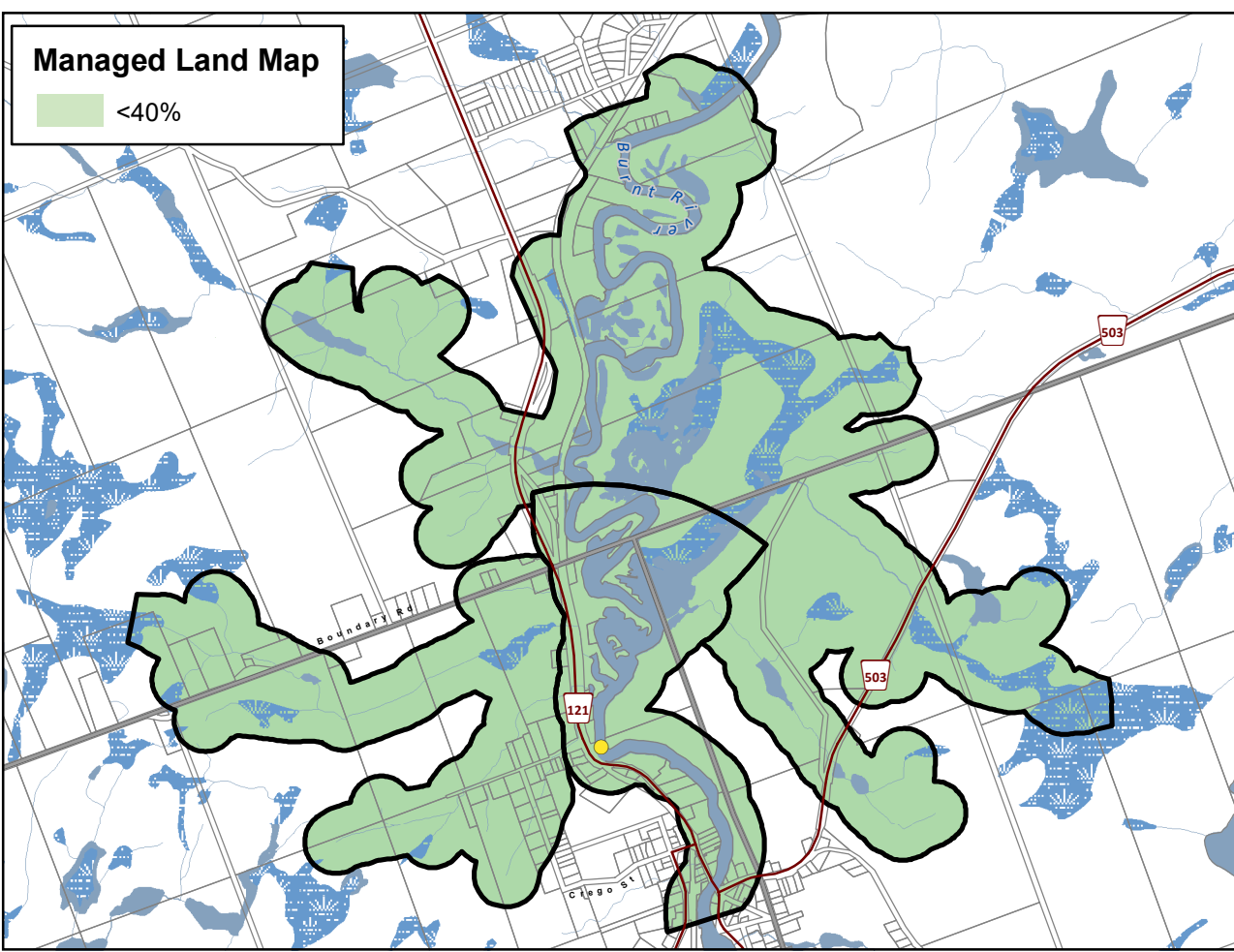


**Trent Conservation Coalition Source Protection Region**

[www.trentsourceprotection.on.ca](http://www.trentsourceprotection.on.ca)

This map has been prepared for the purpose of meeting the provincial requirements under the Clean Water Act, 2006. If it is proposed to use it for another purpose, it would be advisable to first consult with the responsible conservation authority.

PRODUCED BY Lower Trent Conservation on behalf of the Trent Conservation Coalition Source Protection Committee, March 2011  
(Updated November 2022), with data supplied under licence by members of the Ontario Geospatial Data Exchange.

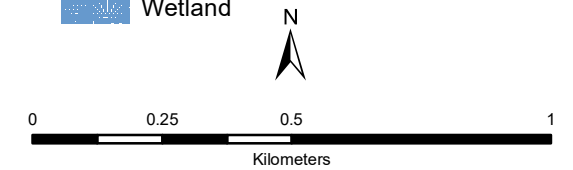


**Fenelon Falls  
Municipal Surface  
Water System**  
**Kawartha - Haliburton Source  
Protection Area**

**Managed Land, Livestock  
Density & Total  
Impervious Surface Area**

**Legend**

- Surface Water Intake
- Railway
- Watercourse
- Main Road
- Highway
- Multi Lane Highway
- Property Boundary
- Source Protection Region
- Source Protection Area
- Lower and Single Tier Municipality
- Upper Tier Municipality
- Intake Protection Zones
- Waterbody
- Wetland

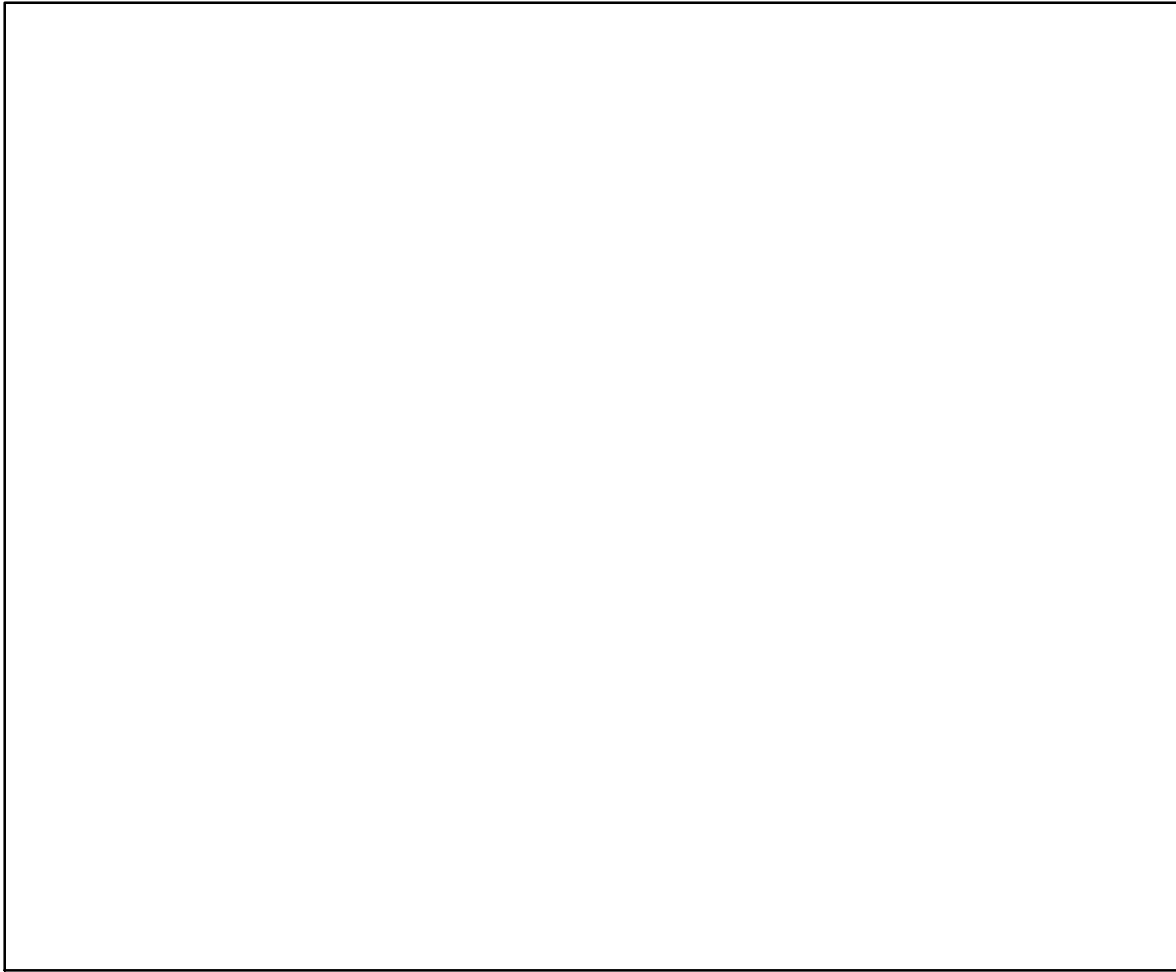
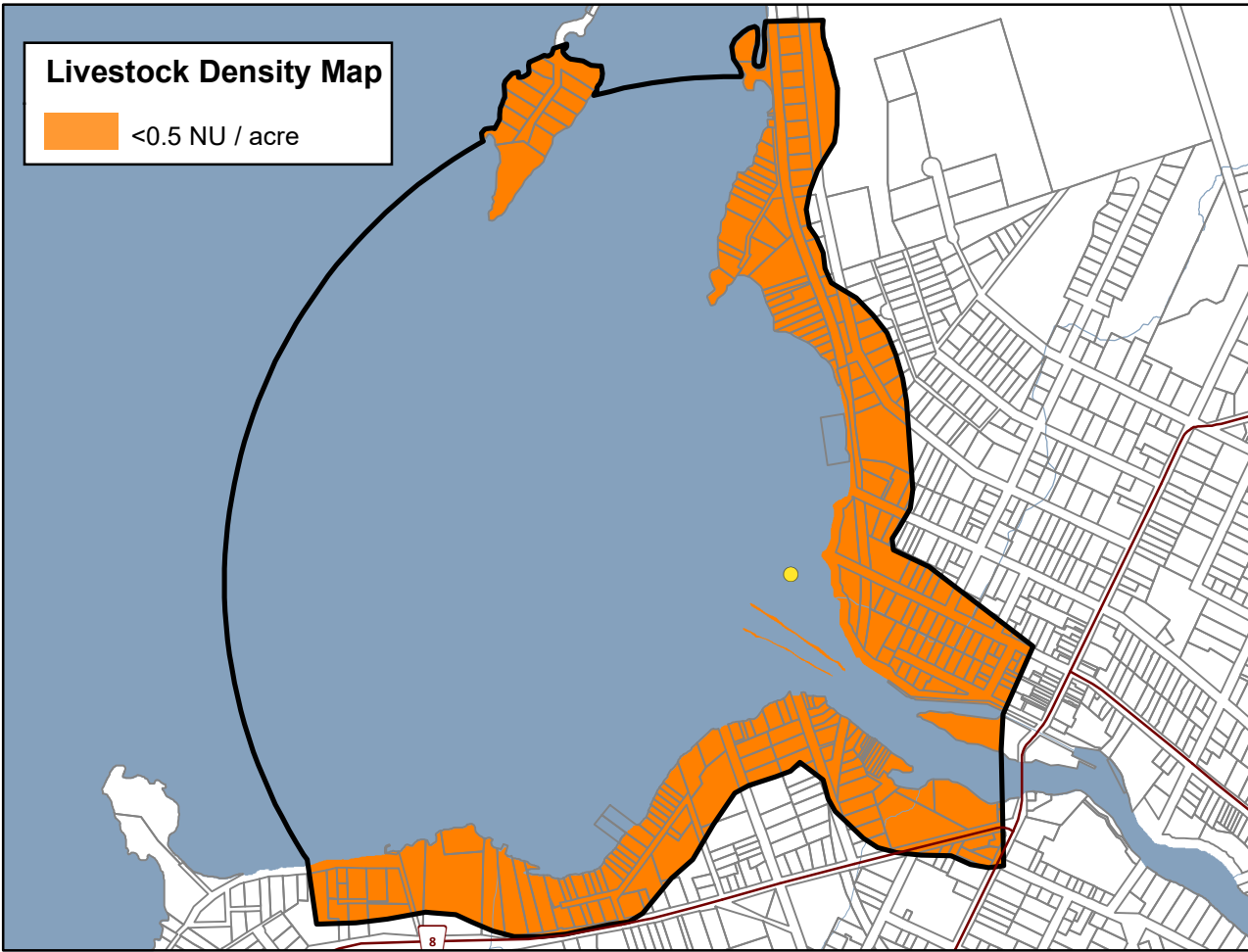
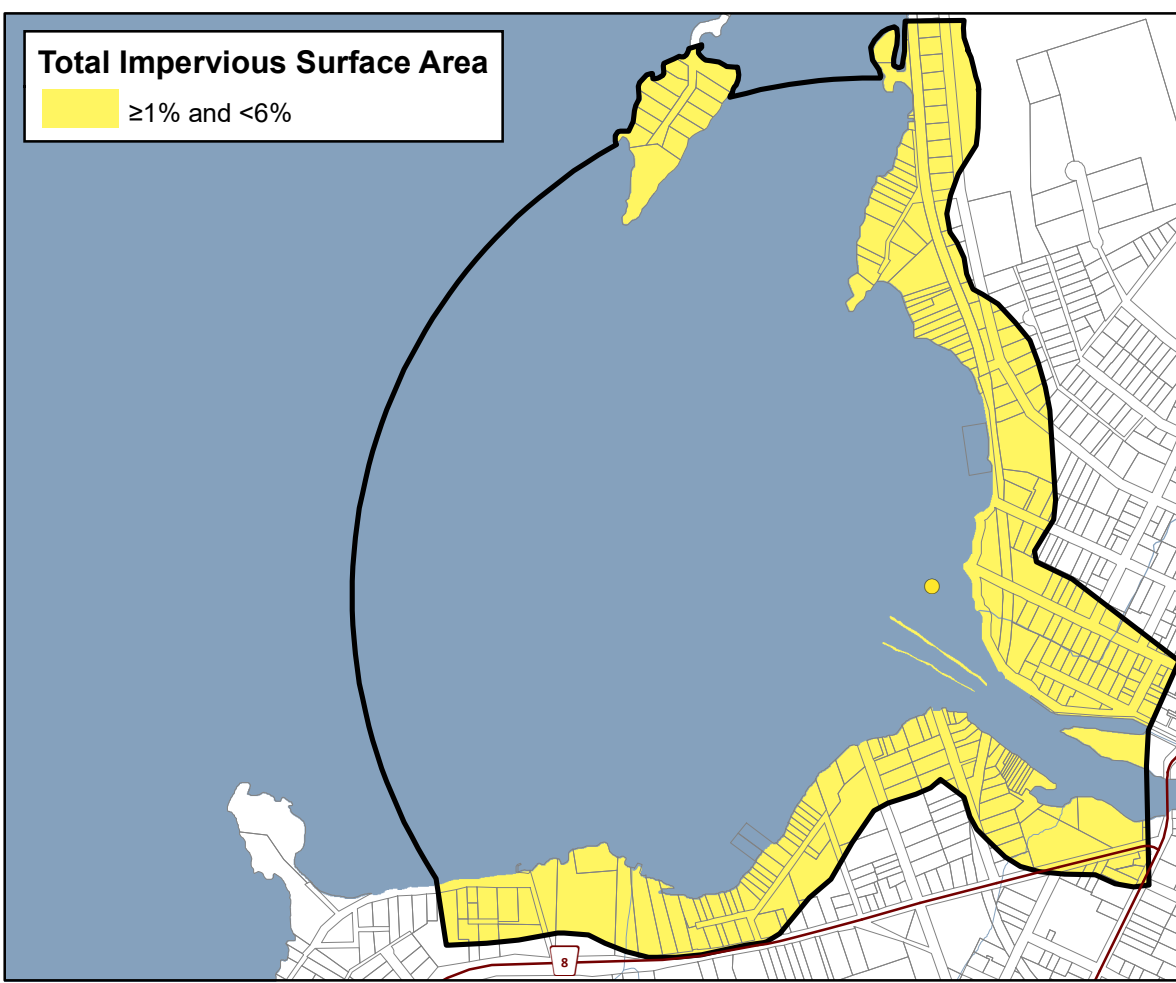
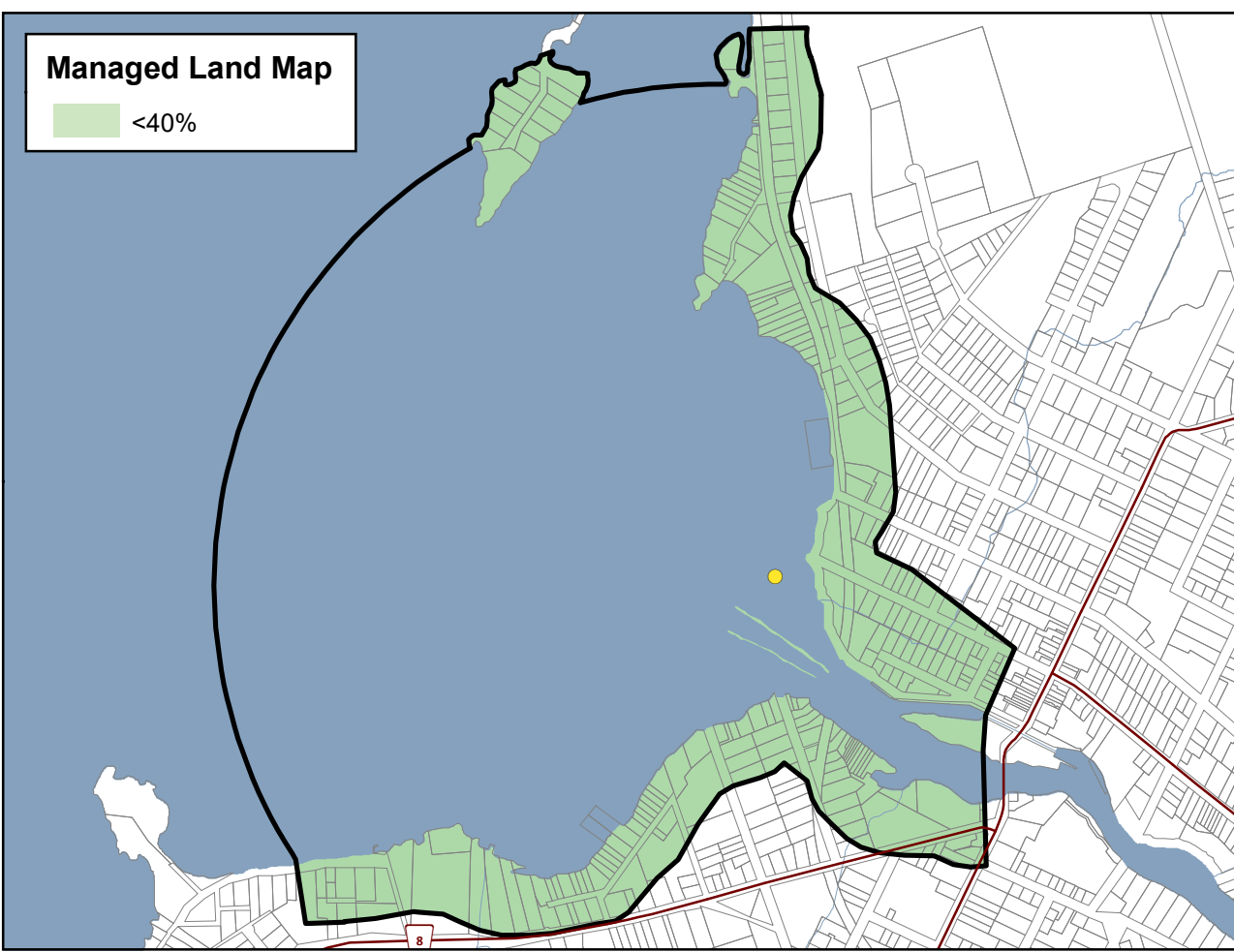


**Trent Conservation Coalition  
Source Protection Region**

[www.trentsourceprotection.on.ca](http://www.trentsourceprotection.on.ca)

This map has been prepared for the purpose of meeting the provincial requirements under the Clean Water Act, 2006. If it is proposed to use it for another purpose, it would be advisable to first consult with the responsible conservation authority.

PRODUCED BY Lower Trent Conservation on behalf of the Trent Conservation Coalition Source Protection Committee, March 2011 (Updated November 2022), with data supplied under licence by members of the Ontario Geospatial Data Exchange.

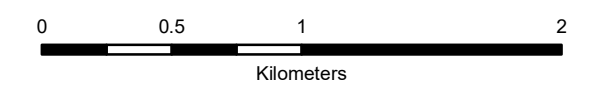


**Lindsay  
Municipal Surface  
Water System  
Kawartha - Haliburton Source  
Protection Area**

**Managed Land, Livestock  
Density & Total  
Impervious Surface Area**

**Legend**

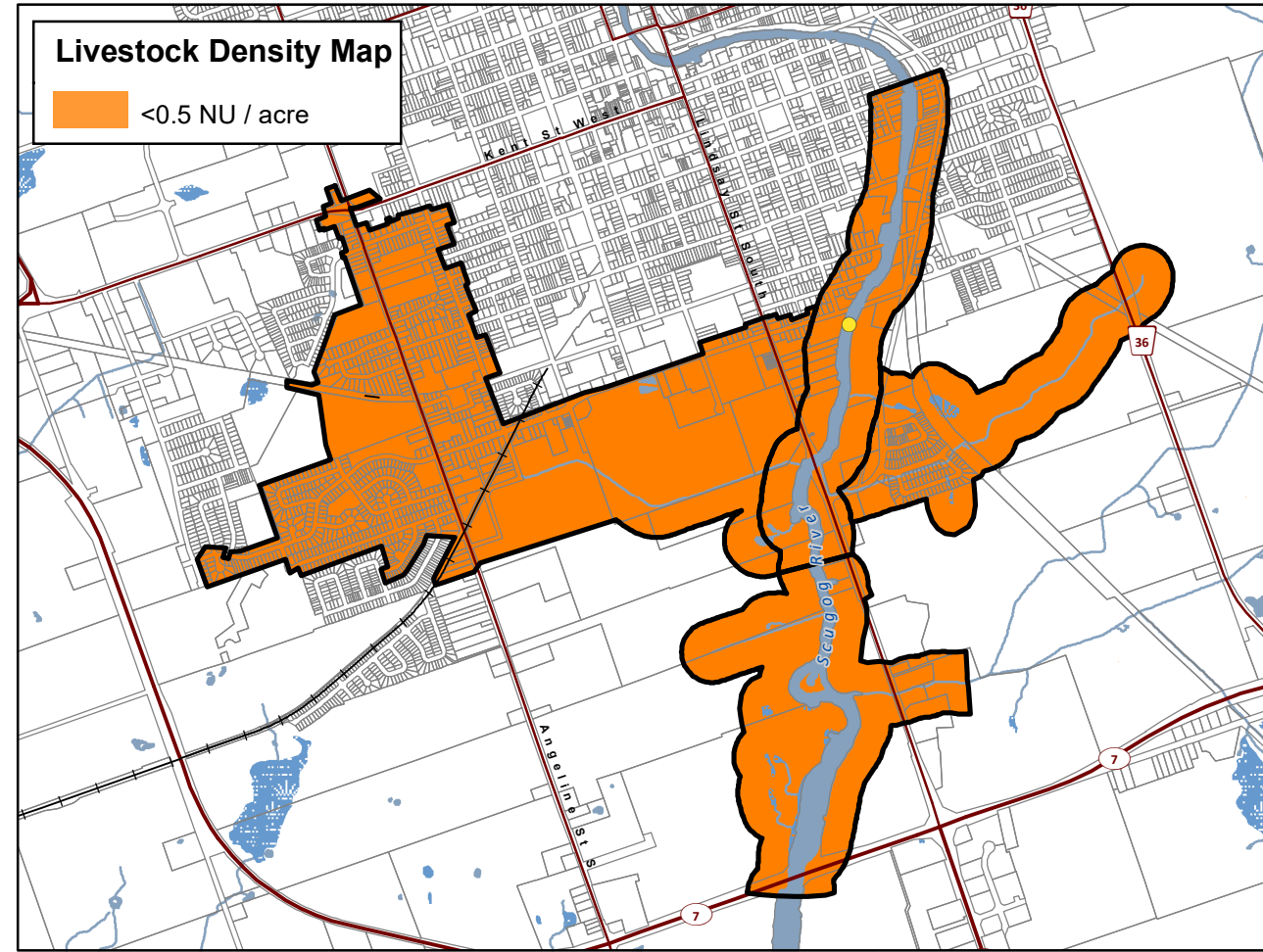
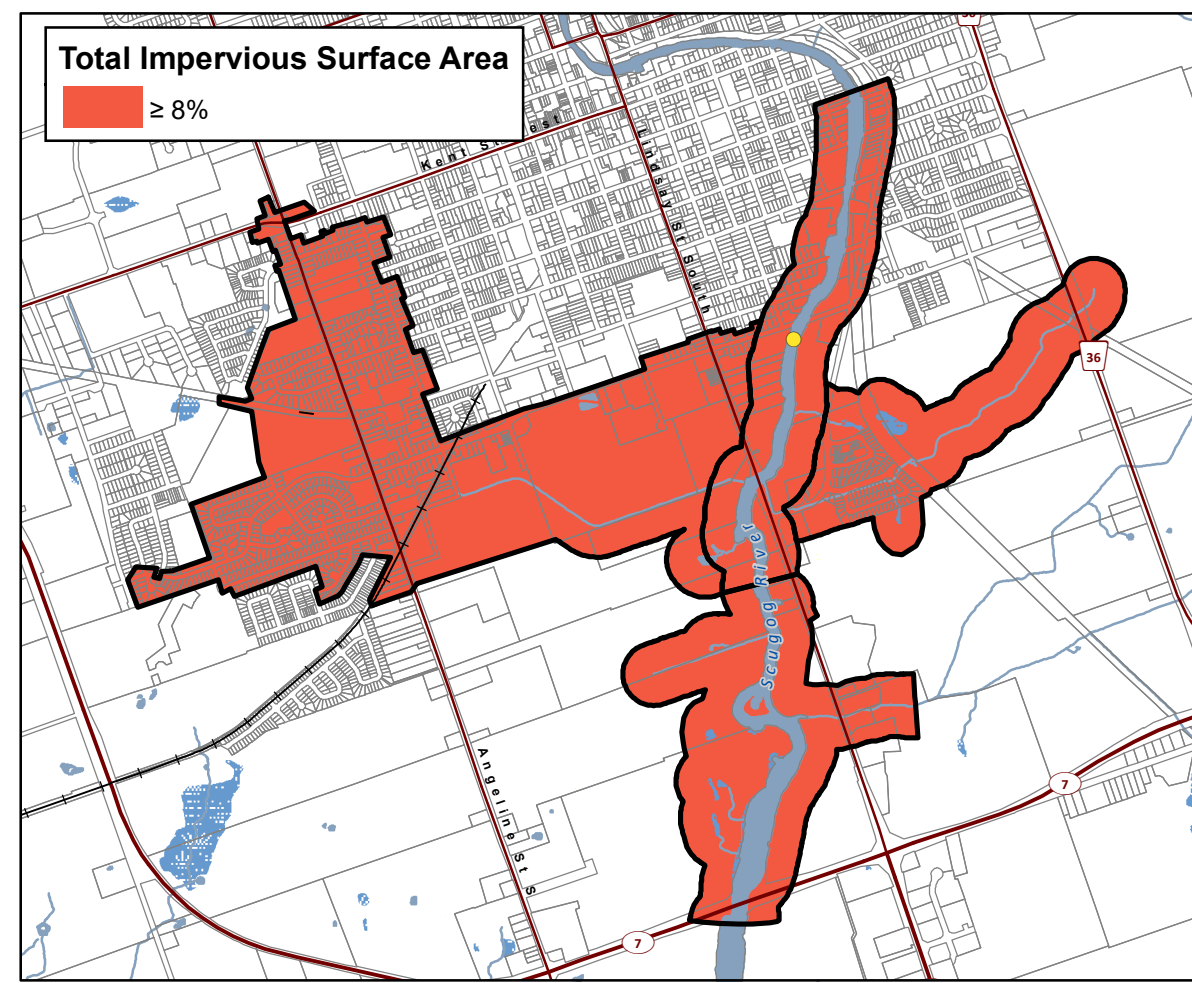
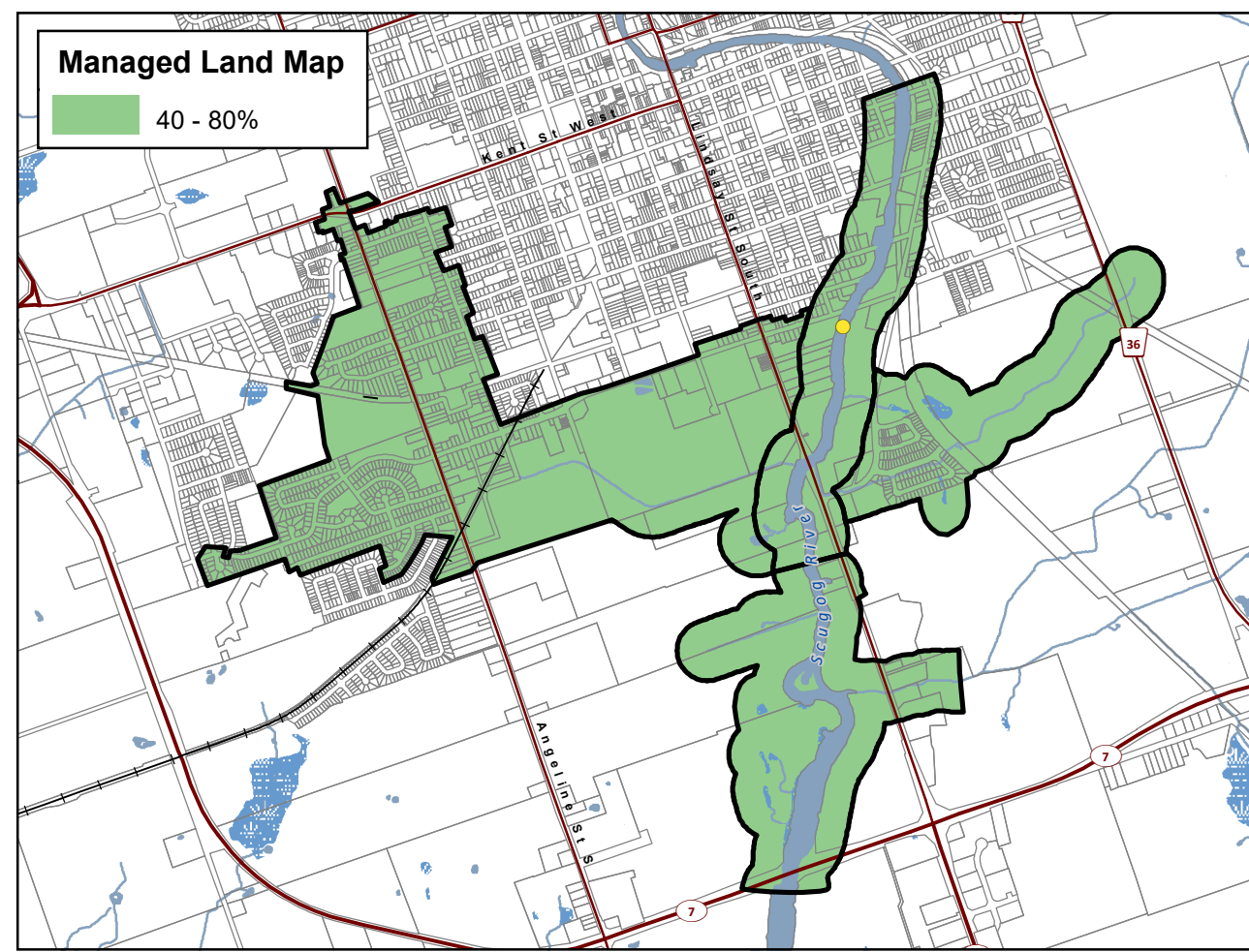
- Surface Water Intake
- Railway
- Watercourse
- Main Road
- Highway
- Multi Lane Highway
- Property Boundary
- Source Protection Region
- Source Protection Area
- Lower and Single Tier Municipality
- Upper Tier Municipality
- Intake Protection Zones
- Waterbody
- Wetland



**Trent Conservation Coalition  
Source Protection Region**  
[www.trentsourceprotection.on.ca](http://www.trentsourceprotection.on.ca)

This map has been prepared for the purpose of meeting the provincial requirements under the Clean Water Act, 2006. If it is proposed to use it for another purpose, it would be advisable to first consult with the responsible conservation authority.

PRODUCED BY Lower Trent Conservation on behalf of the Trent Conservation Coalition Source Protection Committee, March 2011 (Updated November 2022), with data supplied under licence by members of the Ontario Geospatial Data Exchange.



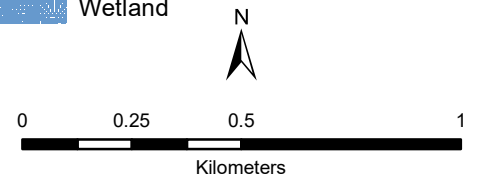
**Southview Estates  
 Municipal Surface  
 Water System**

**Kawartha - Haliburton Source  
 Protection Area**

**Managed Land, Livestock  
 Density & Total  
 Impervious Surface Area**

**Legend**

- Surface Water Intake
- Railway
- Watercourse
- Main Road
- Highway
- Multi Lane Highway
- Property Boundary
- Source Protection Region
- Source Protection Area
- Lower Tier Municipality
- Upper and Single Tier Municipality
- Intake Protection Zones
- Waterbody
- Wetland

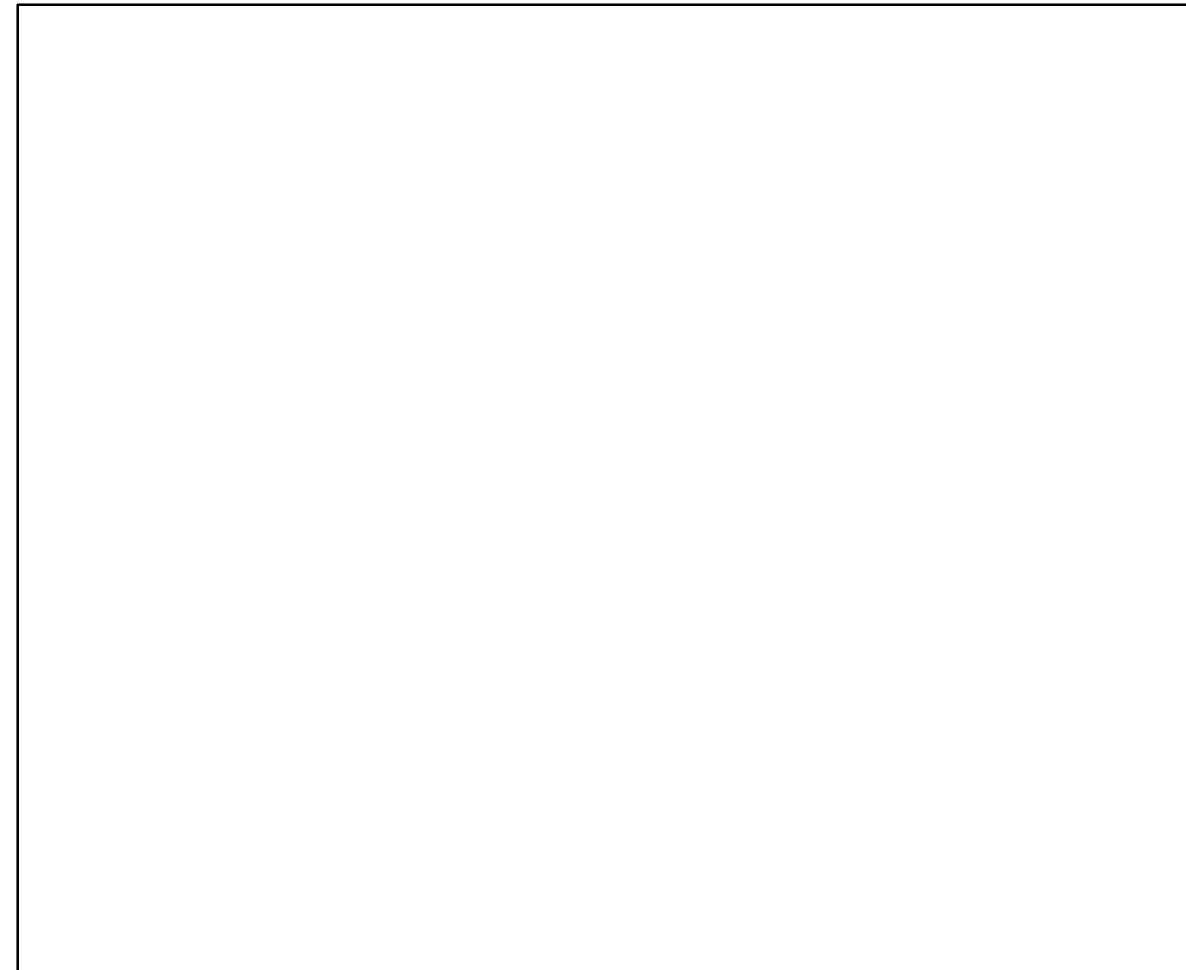
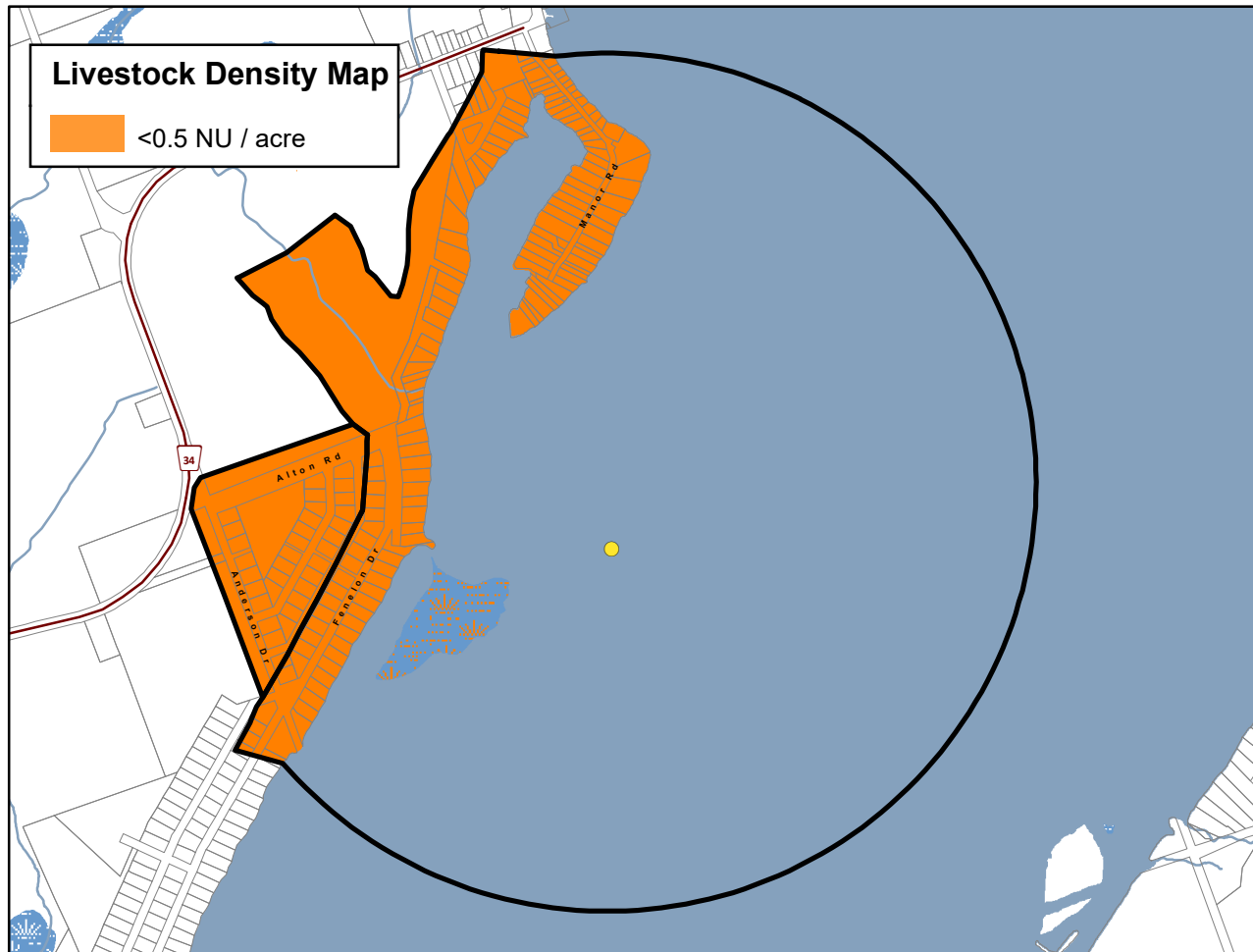
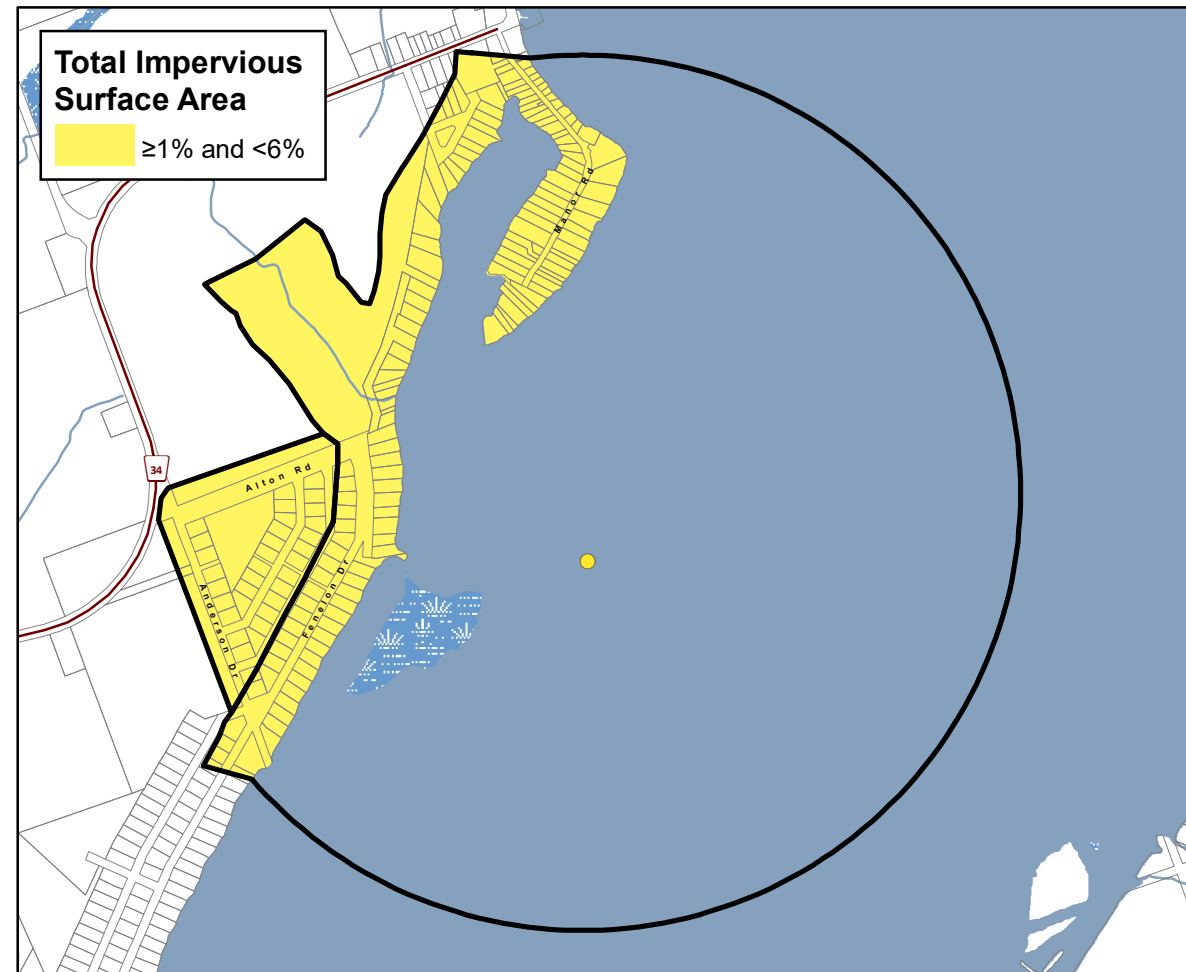
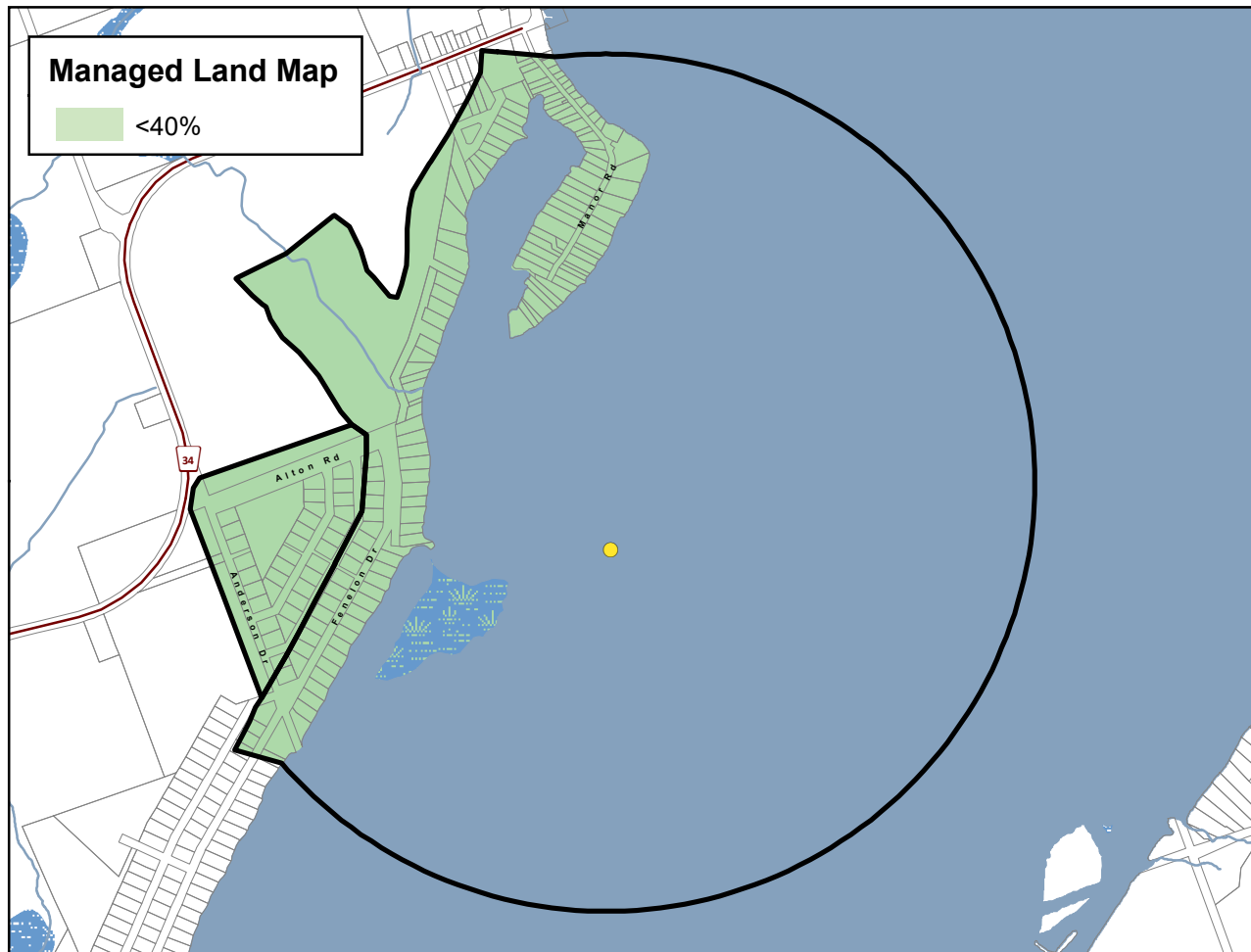


**Trent Conservation Coalition  
 Source Protection Region**

[www.trentsourceprotection.on.ca](http://www.trentsourceprotection.on.ca)

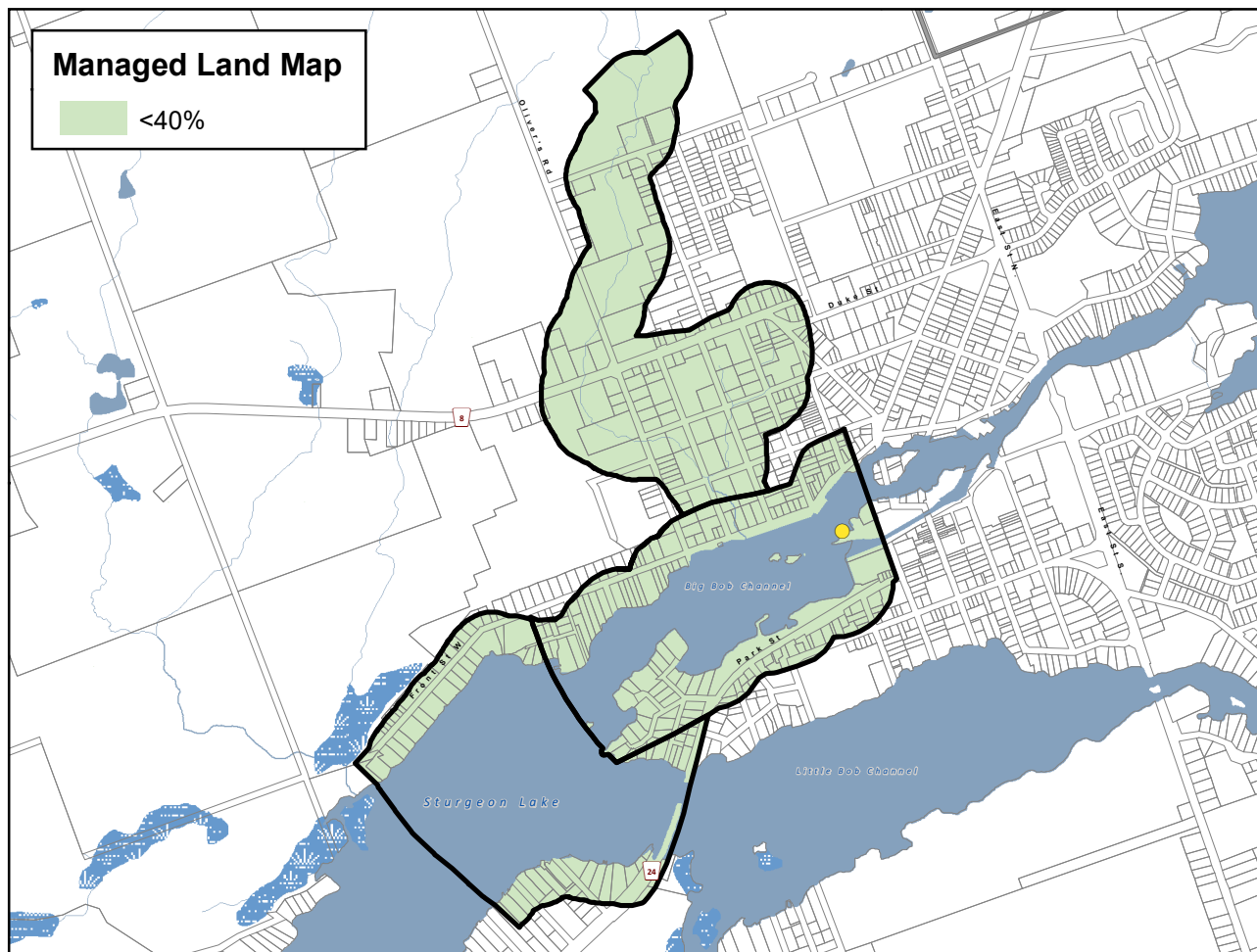
This map has been prepared for the purpose of meeting the provincial requirements under the Clean Water Act, 2006. If it is proposed to use it for another purpose, it would be advisable to first consult with the responsible conservation authority.

PRODUCED BY Lower Trent Conservation on behalf of the Trent Conservation Coalition Source Protection Committee, March 2011 (Updated November 2022), with data supplied under licence by members of the Ontario Geospatial Data Exchange.





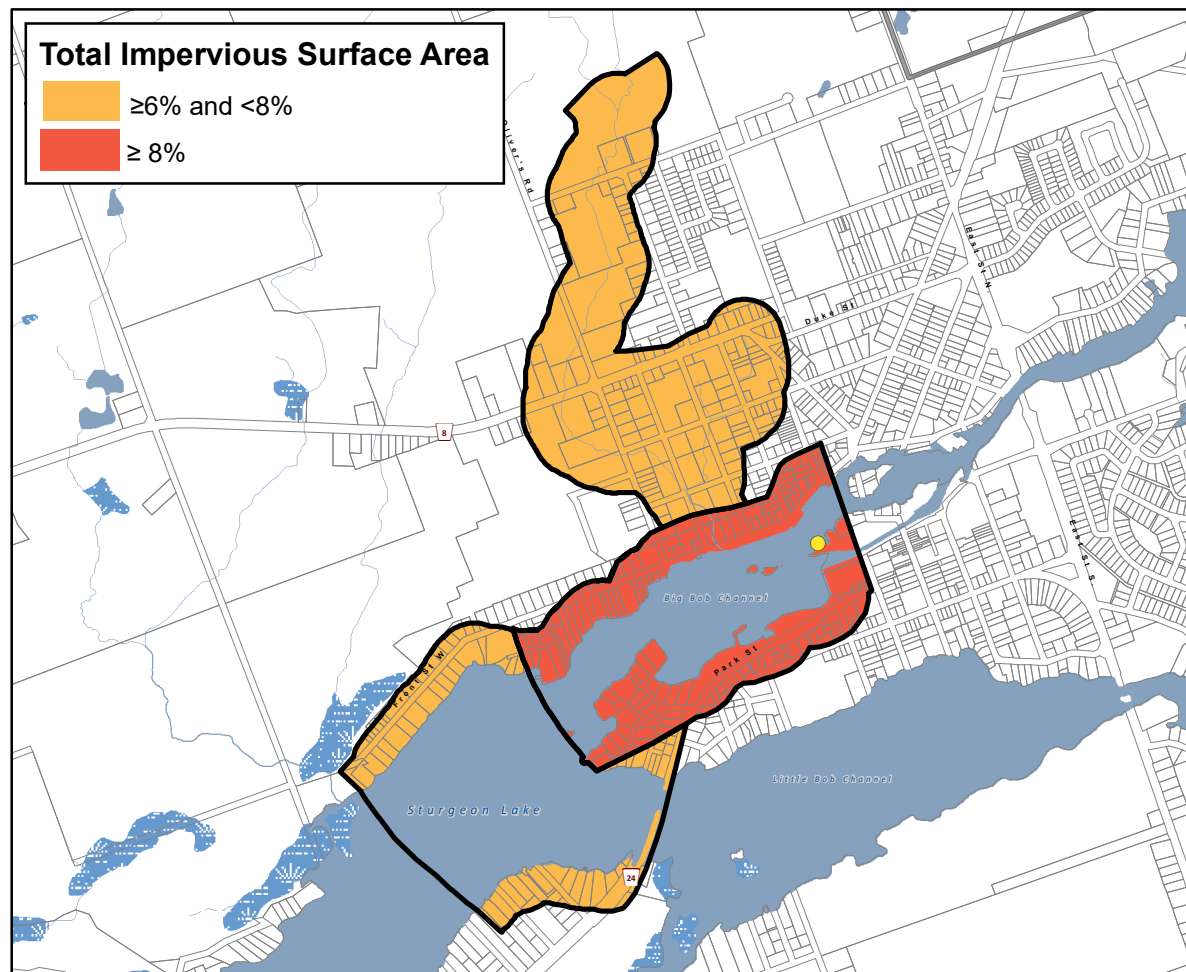
**Managed Land Map**

 <40%




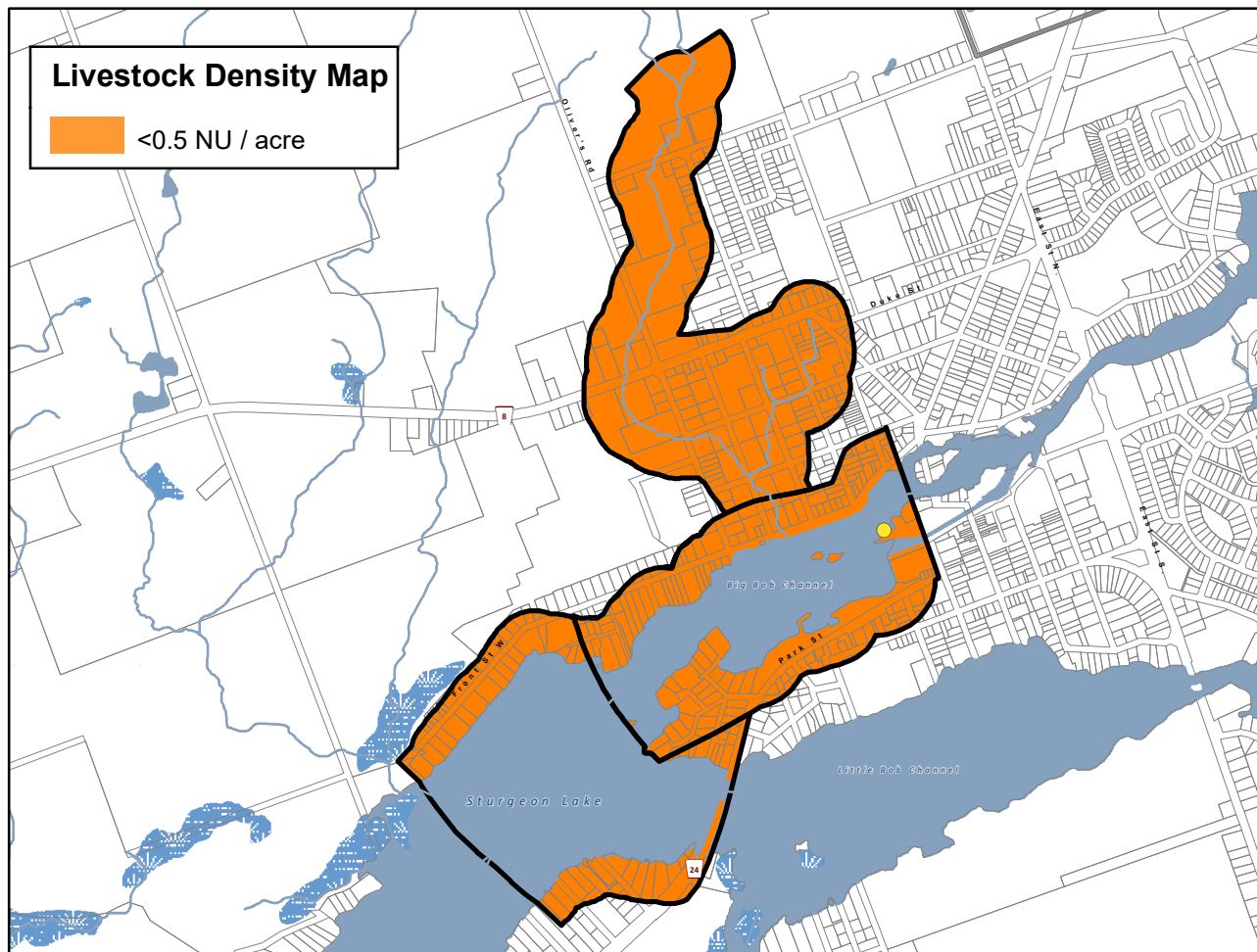
**Total Impervious Surface Area**

 ≥6% and <8%  
 ≥ 8%



**Livestock Density Map**


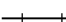











 <0.5 NU / acre

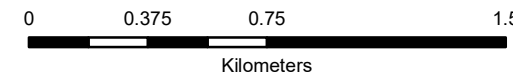


**Bobcaygeon Municipal Surface Water System  
Kawartha - Haliburton Source Protection Area**

**Managed Land, Livestock Density & Total Impervious Surface Area**

**Legend**

-  Surface Water Intake
-  Railway
-  Watercourse
-  Main Road
-  Highway
-  Multi Lane Highway
-  Property Boundary
-  Source Protection Region
-  Source Protection Area
-  Upper and Single Tier Municipality
-  Lower Tier Municipality
-  Intake Protection Zones
-  Waterbody
-  Wetland



**Trent Conservation Coalition Source Protection Region**

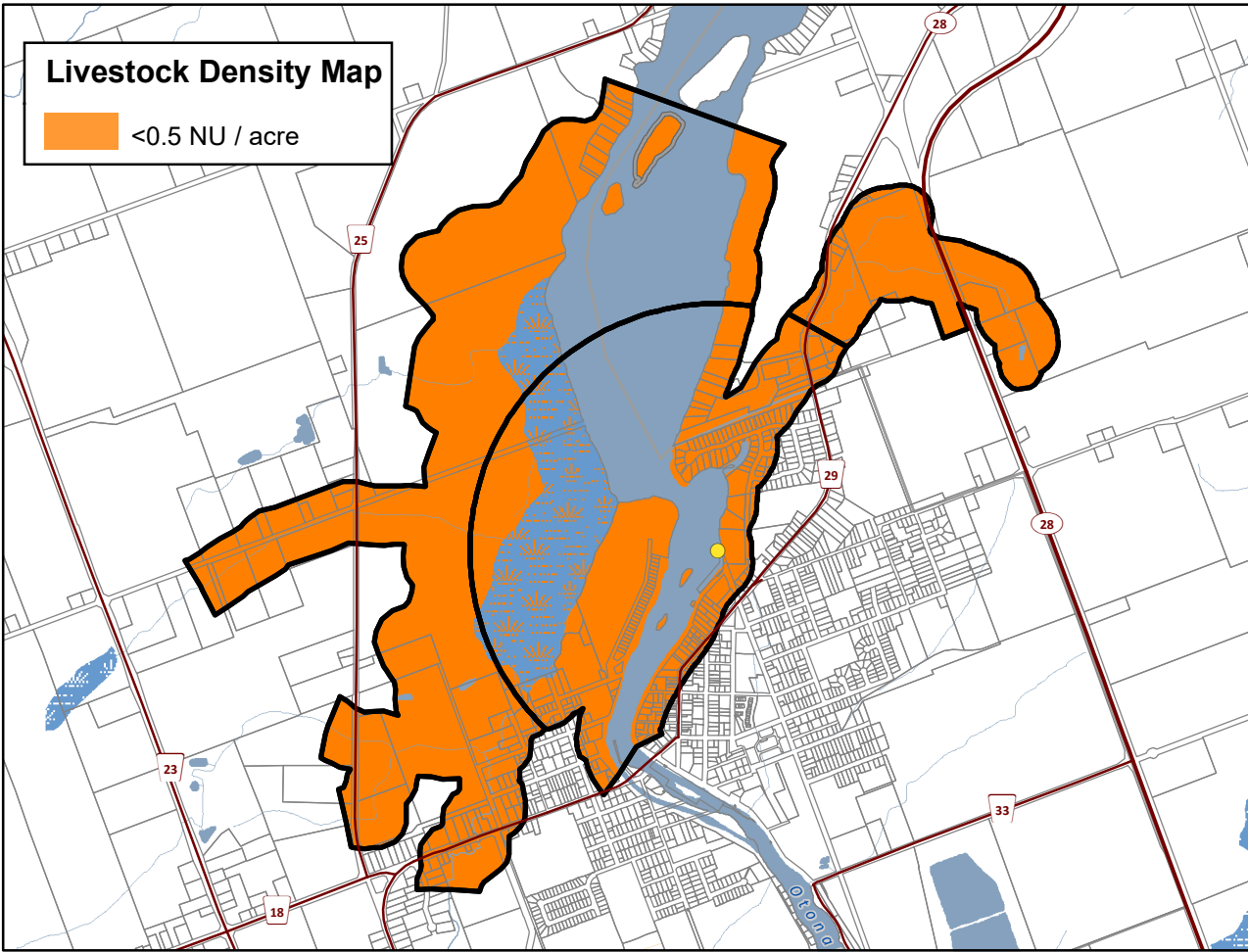
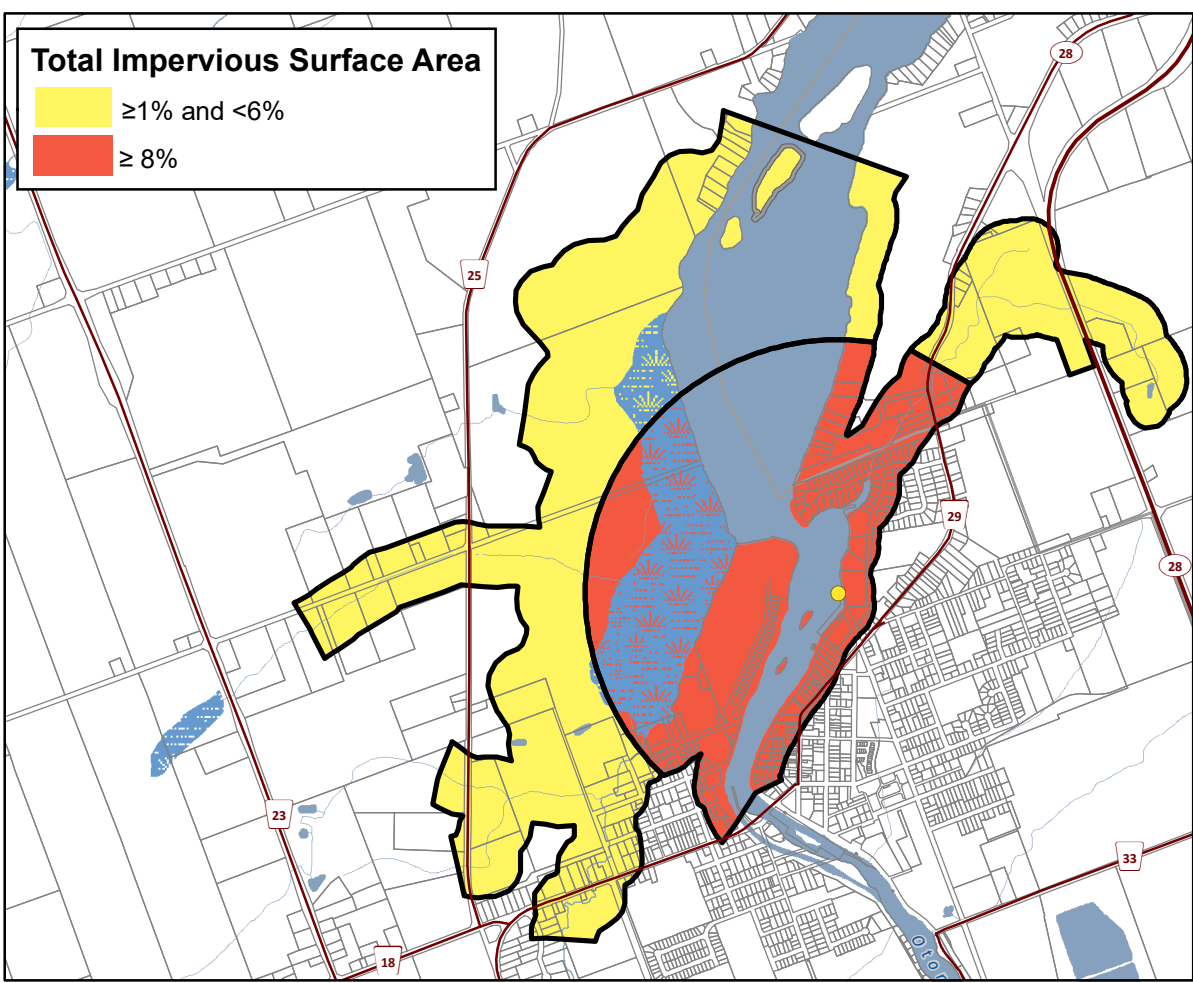
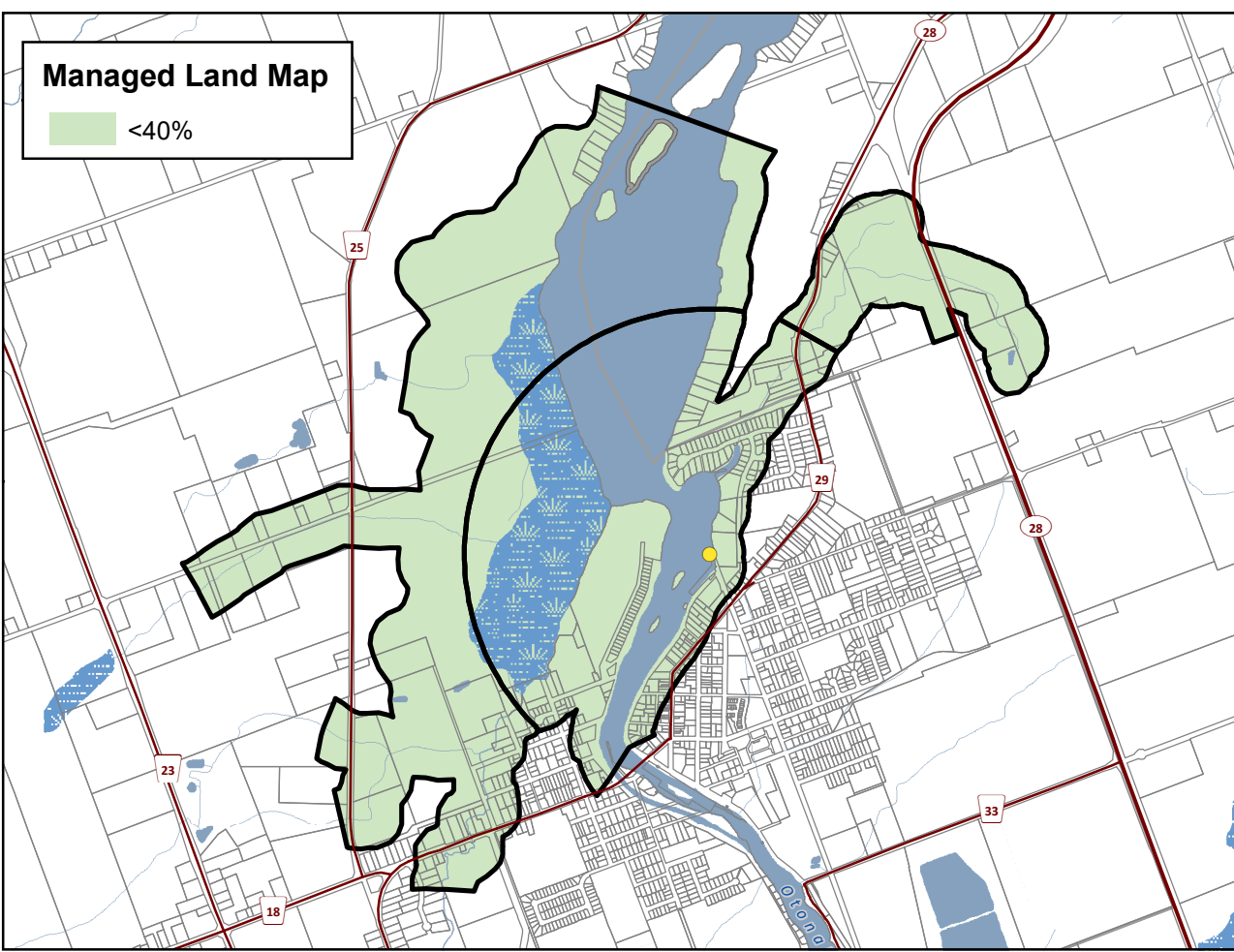
[www.trentsourceprotection.on.ca](http://www.trentsourceprotection.on.ca)

This map has been prepared for the purpose of meeting the provincial requirements under the Clean Water Act, 2006. If it is proposed to use it for another purpose, it would be advisable to first consult with the responsible conservation authority.

PRODUCED BY Lower Trent Conservation on behalf of the Trent Conservation Coalition Source Protection Committee, March 2011 (Updated November 2022), with data supplied under licence by members of the Ontario Geospatial Data Exchange.



**Lakefield  
Municipal Surface  
Water System  
Otonabee-Peterborough  
Source Protection Area**  
**Managed Land, Livestock  
Density & Total  
Impervious Surface Area**



**Legend**

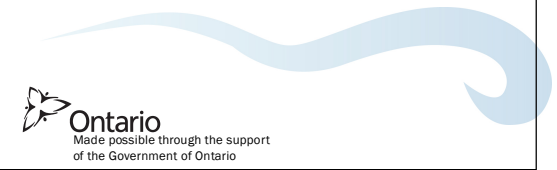
- Surface Water Intake
- Railway
- Watercourse
- Main Road
- Highway
- Multi Lane Highway
- Property Boundary
- Source Protection Region
- Source Protection Area
- Lower and Single Tier Municipality
- Upper Tier Municipality
- Waterbody
- Wetland

N  
0 0.5 1 2  
Kilometers

**Trent Conservation Coalition  
Source Protection Region**  
[www.trentsourceprotection.on.ca](http://www.trentsourceprotection.on.ca)

This map has been prepared for the purpose of meeting the provincial requirements under the Clean Water Act, 2006. If it is proposed to use it for another purpose, it would be advisable to first consult with the responsible conservation authority.

PRODUCED BY Lower Trent Conservation on behalf of the Trent Conservation Coalition Source Protection Committee, March 2011 (Updated November 2022), with data supplied under licence by members of the Ontario Geospatial Data Exchange.



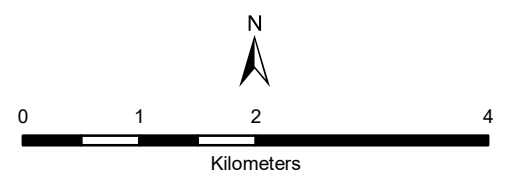
**Peterborough Municipal Surface Water System**

**Otonabee-Peterborough Source Protection Area**

**Managed Land, Livestock Density & Total Impervious Surface Area**

**Legend**

- Surface Water Intake
- Railway
- Watercourse
- Main Road
- Highway
- Multi Lane Highway
- Property Boundary
- Source Protection Region
- Source Protection Area
- Lower and Single Tier Municipality
- Upper Tier Municipality
- Intake Protection Zones
- Waterbody
- Wetland

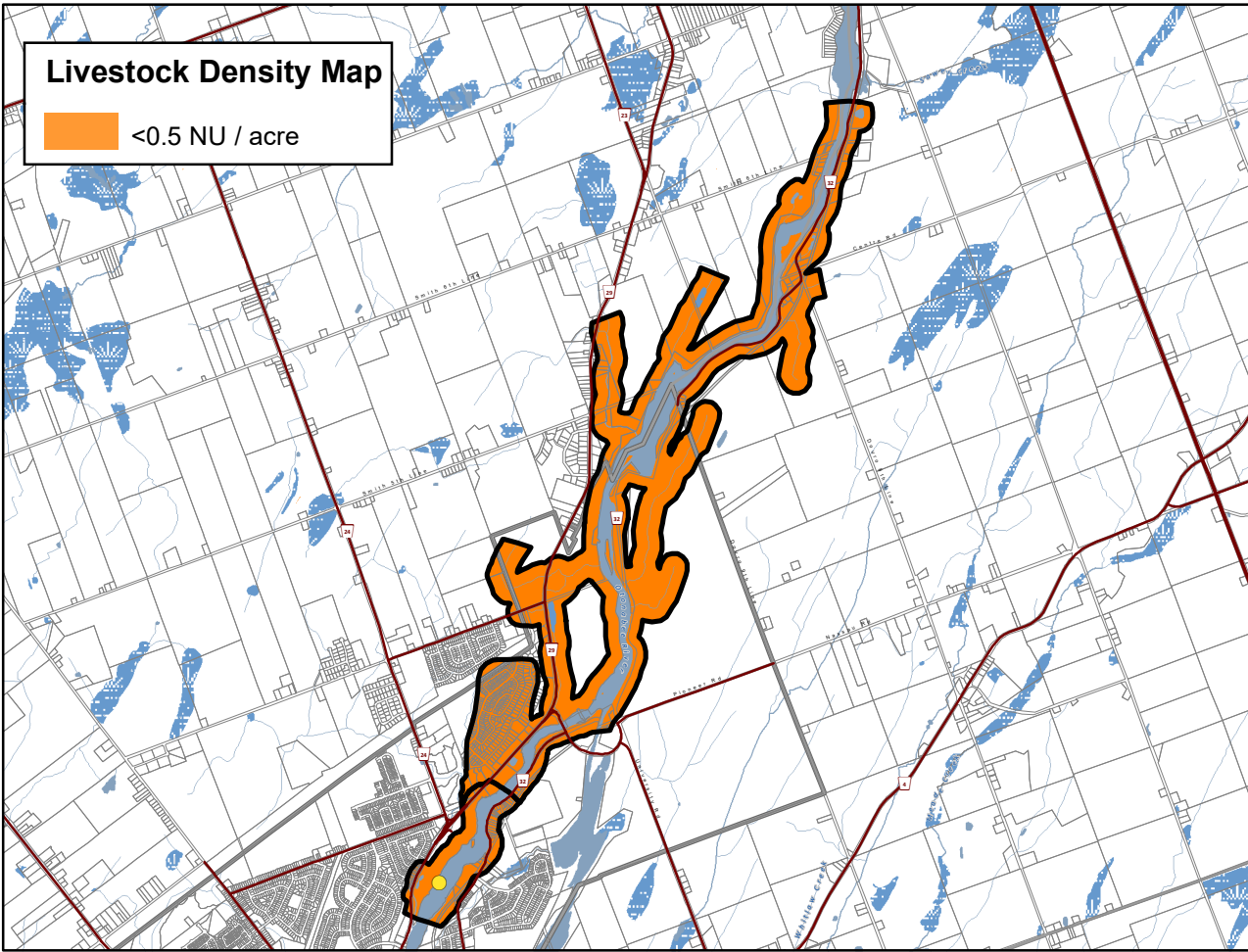
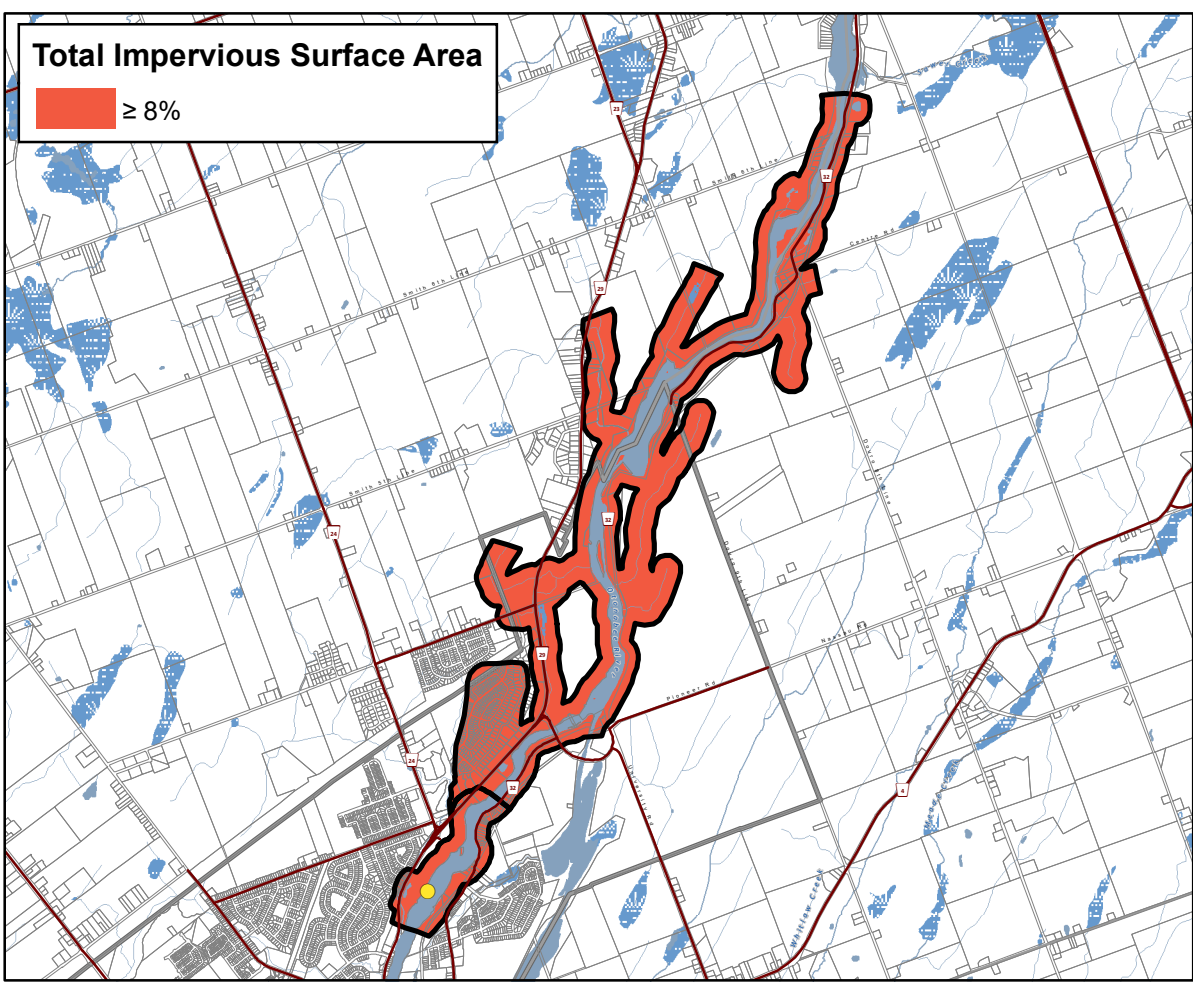
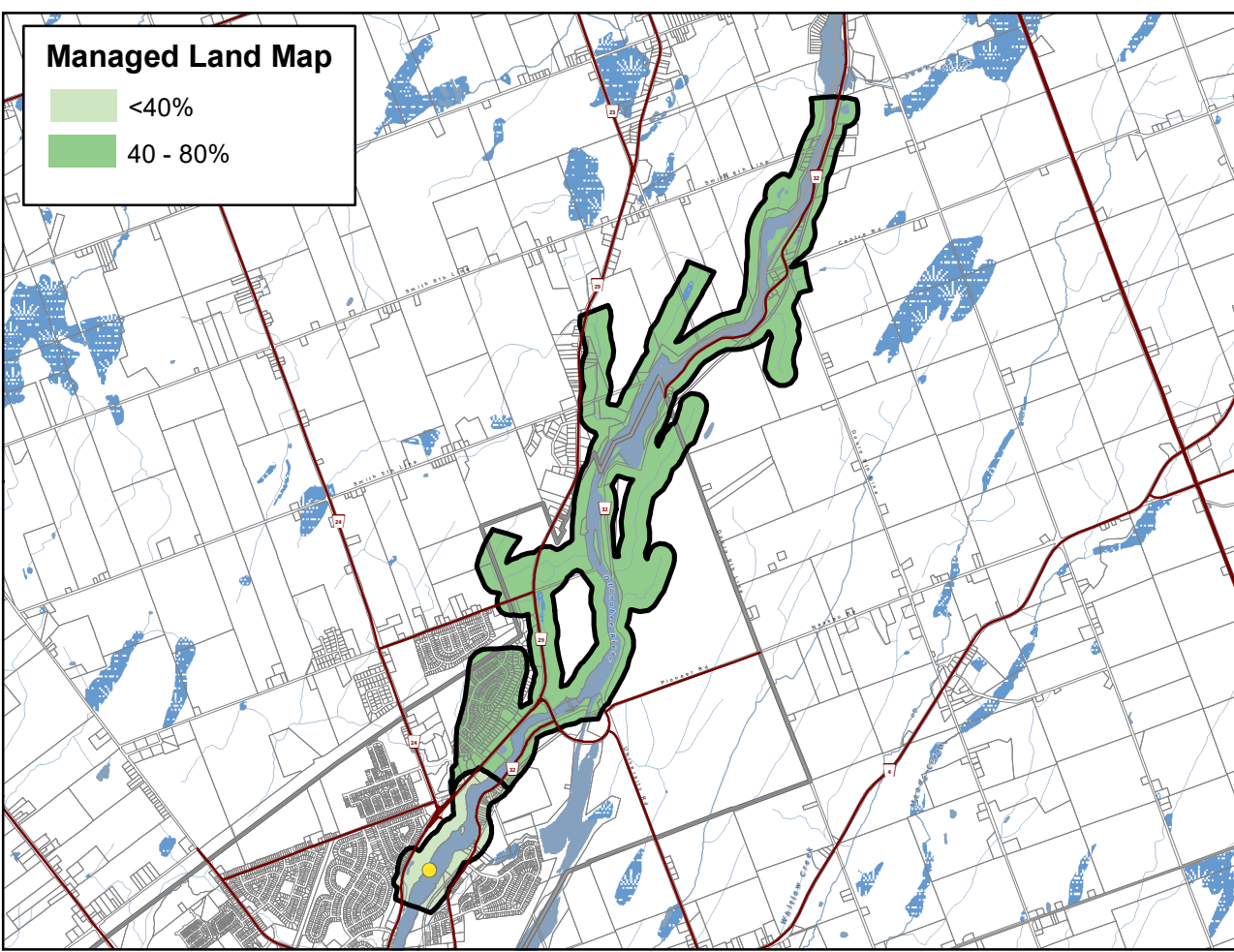


**Trent Conservation Coalition Source Protection Region**

[www.trentsourceprotection.on.ca](http://www.trentsourceprotection.on.ca)

This map has been prepared for the purpose of meeting the provincial requirements under the Clean Water Act, 2006. If it is proposed to use it for another purpose, it would be advisable to first consult with the responsible conservation authority.

PRODUCED BY Lower Trent Conservation on behalf of the Trent Conservation Coalition Source Protection Committee, March 2011 (Updated November 2022), with data supplied under licence by members of the Ontario Geospatial Data Exchange.



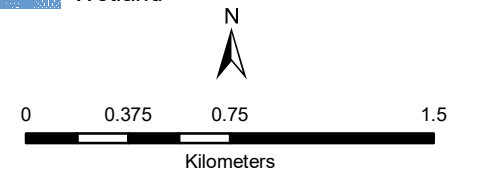


**Hastings Municipal Surface Water System**  
**Otonabee-Peterborough Source Protection Area**

**Managed Land, Livestock Density & Total Impervious Surface Area**

**Legend**

- Surface Water Intake
- Railway
- Watercourse
- Main Road
- Highway
- Multi Lane Highway
- Property Boundary
- Source Protection Region
- Source Protection Area
- Lower and Single Tier Municipality
- Upper Tier Municipality
- Intake Protection Zones
- Waterbody
- Wetland

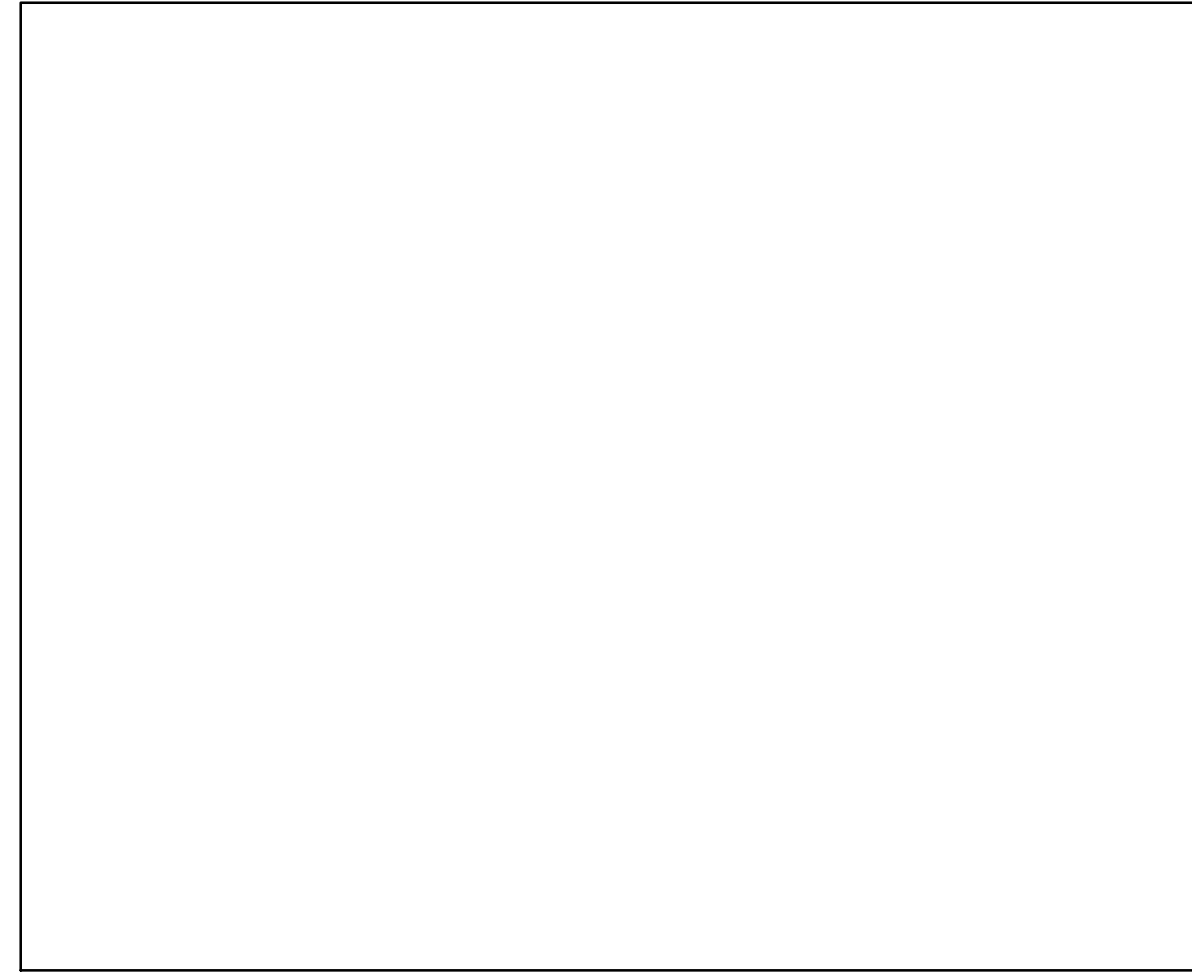
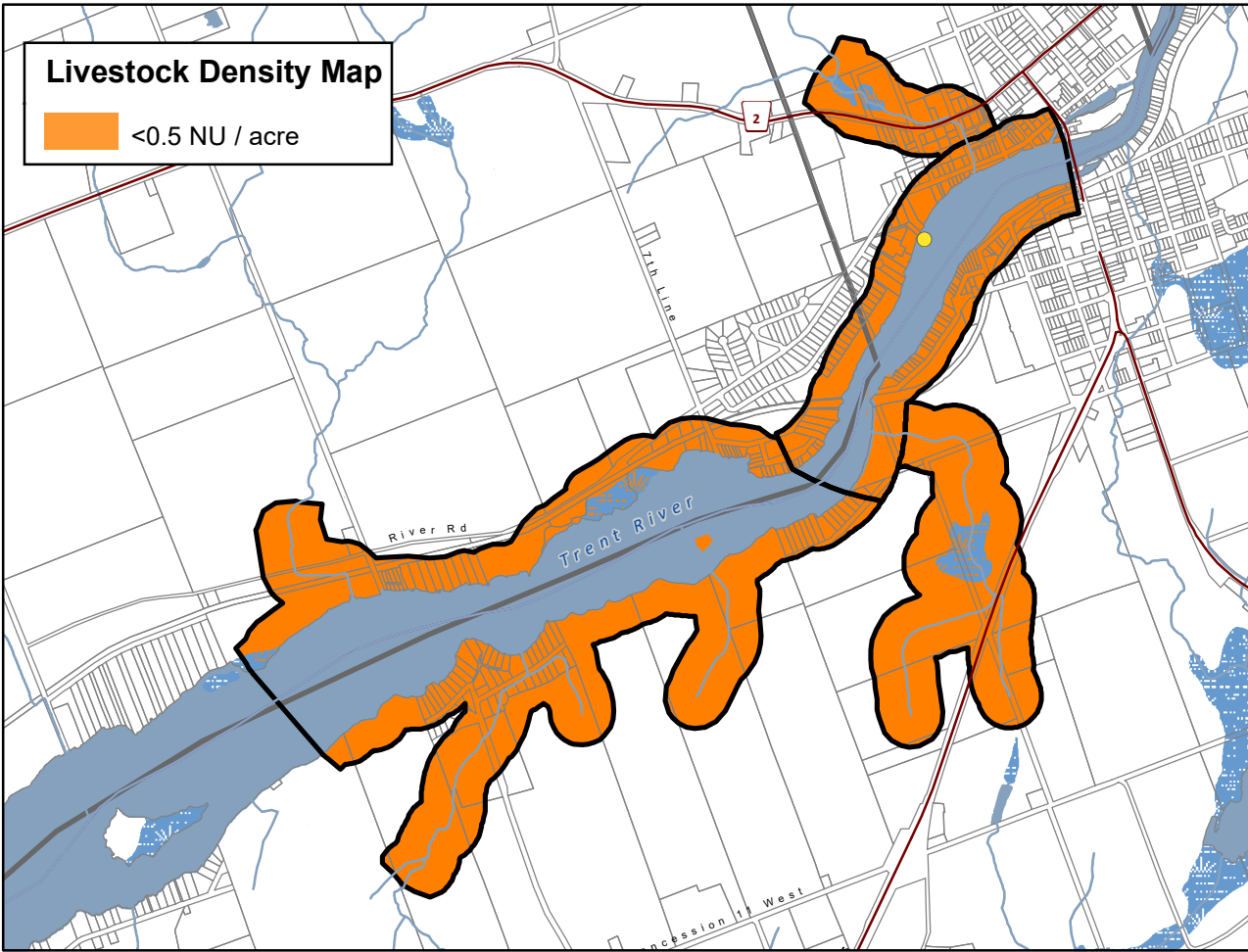
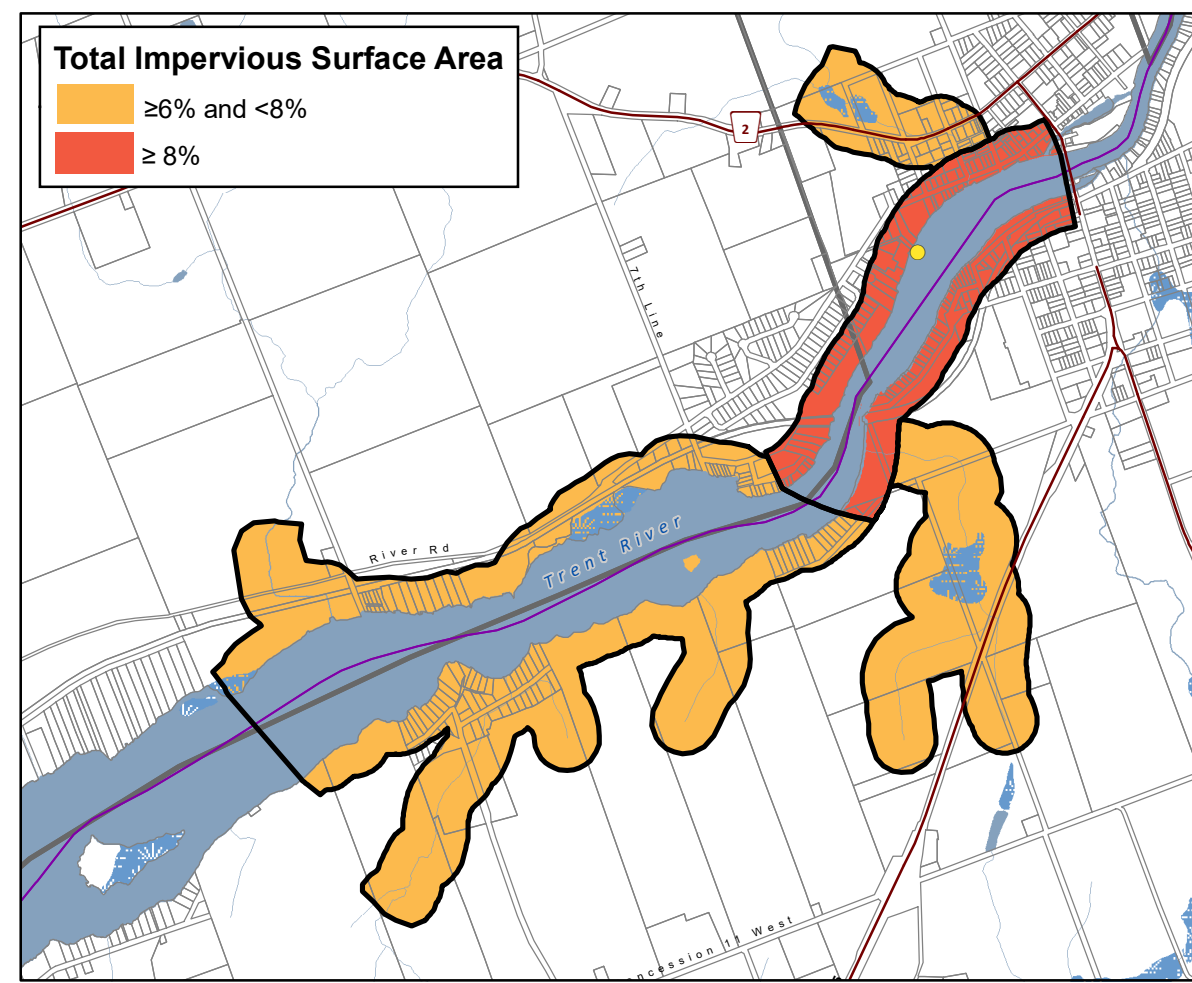
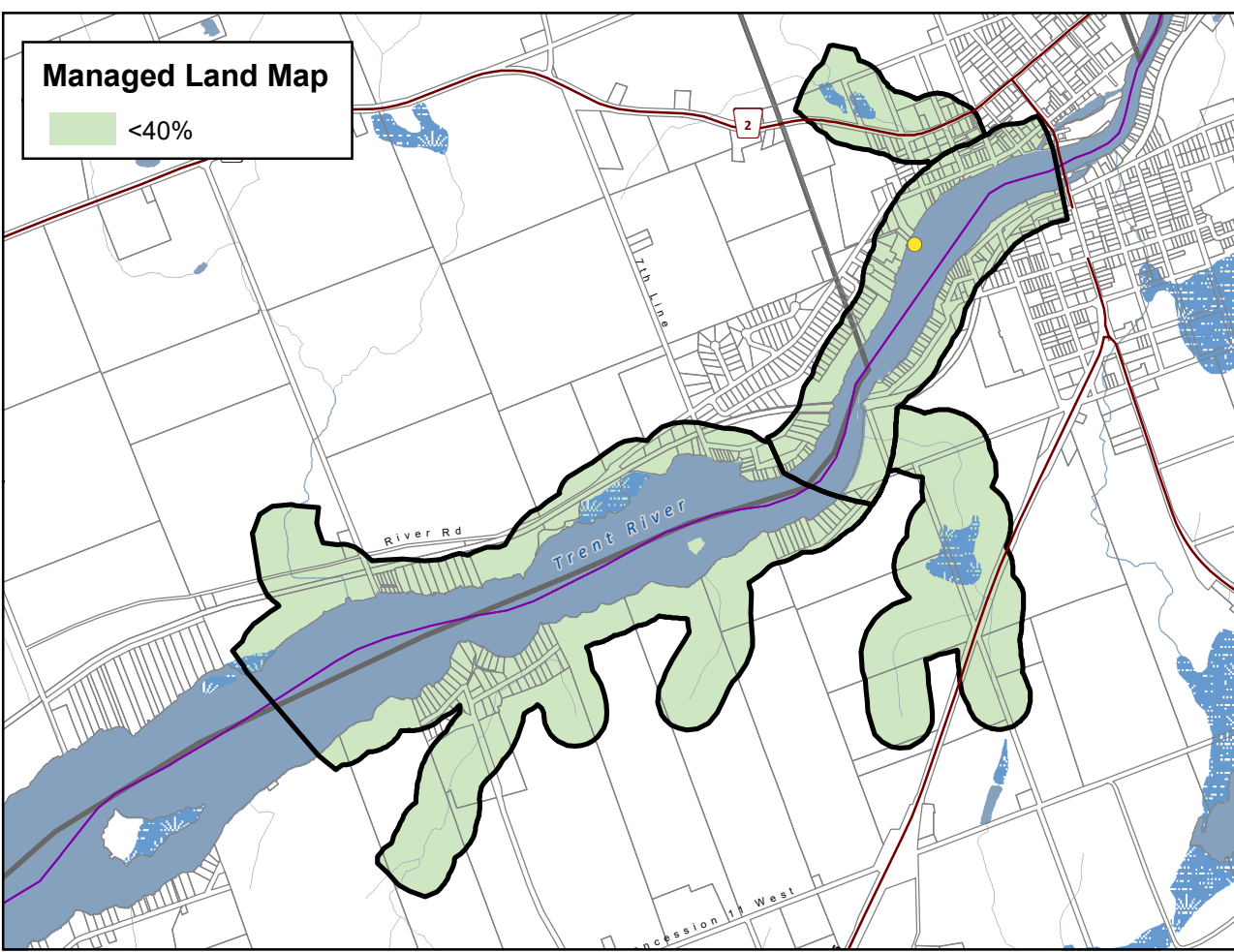


**Trent Conservation Coalition Source Protection Region**

[www.trentsourceprotection.on.ca](http://www.trentsourceprotection.on.ca)

This map has been prepared for the purpose of meeting the provincial requirements under the Clean Water Act, 2006. If it is proposed to use it for another purpose, it would be advisable to first consult with the responsible conservation authority.

PRODUCED BY Lower Trent Conservation on behalf of the Trent Conservation Coalition Source Protection Committee, March 2011 (Updated November 2022), with data supplied under licence by members of the Ontario Geospatial Data Exchange.

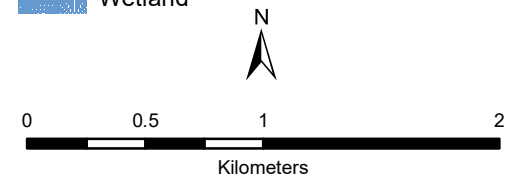


**Marmora Municipal Surface Water System  
Crowe Valley Source Protection Area**

**Managed Land, Livestock Density & Total Impervious Surface Area**

**Legend**

- Surface Water Intake
- Railway
- Watercourse
- Main Road
- Highway
- Multi Lane Highway
- Property Boundary
- Source Protection Region
- Source Protection Area
- Lower Tier Municipality
- Upper and Single Tier Municipality
- Intake Protection Zones
- Waterbody
- Wetland

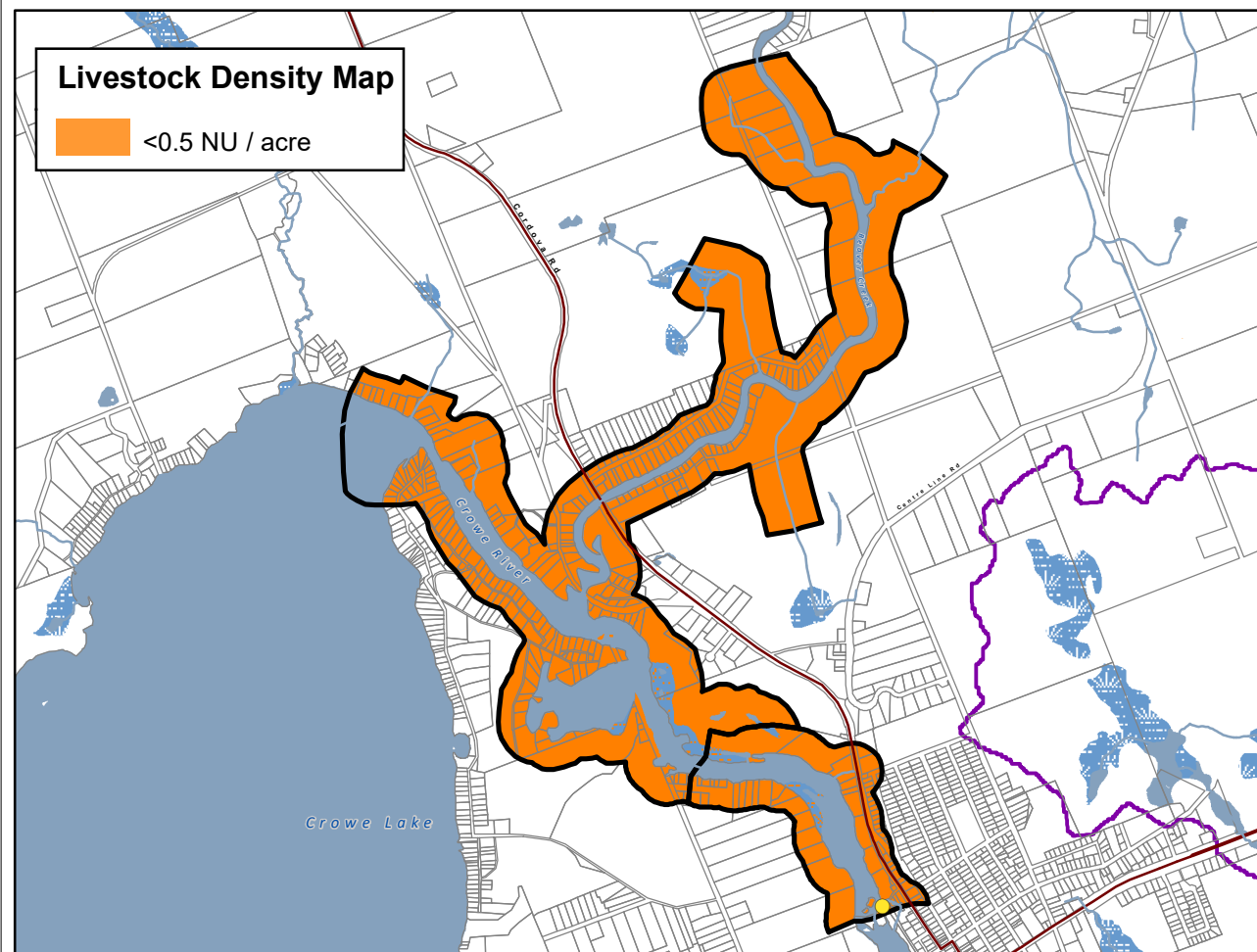
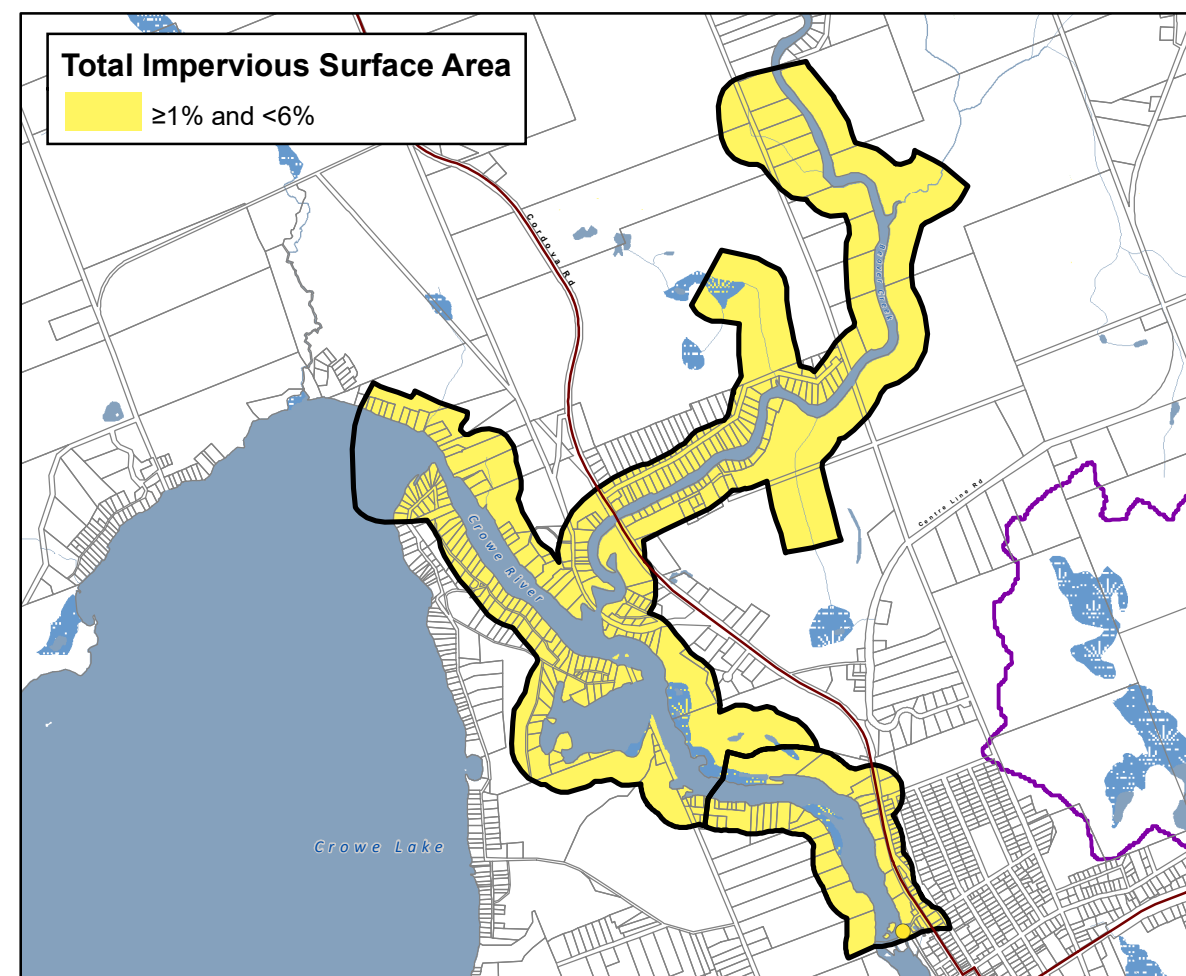
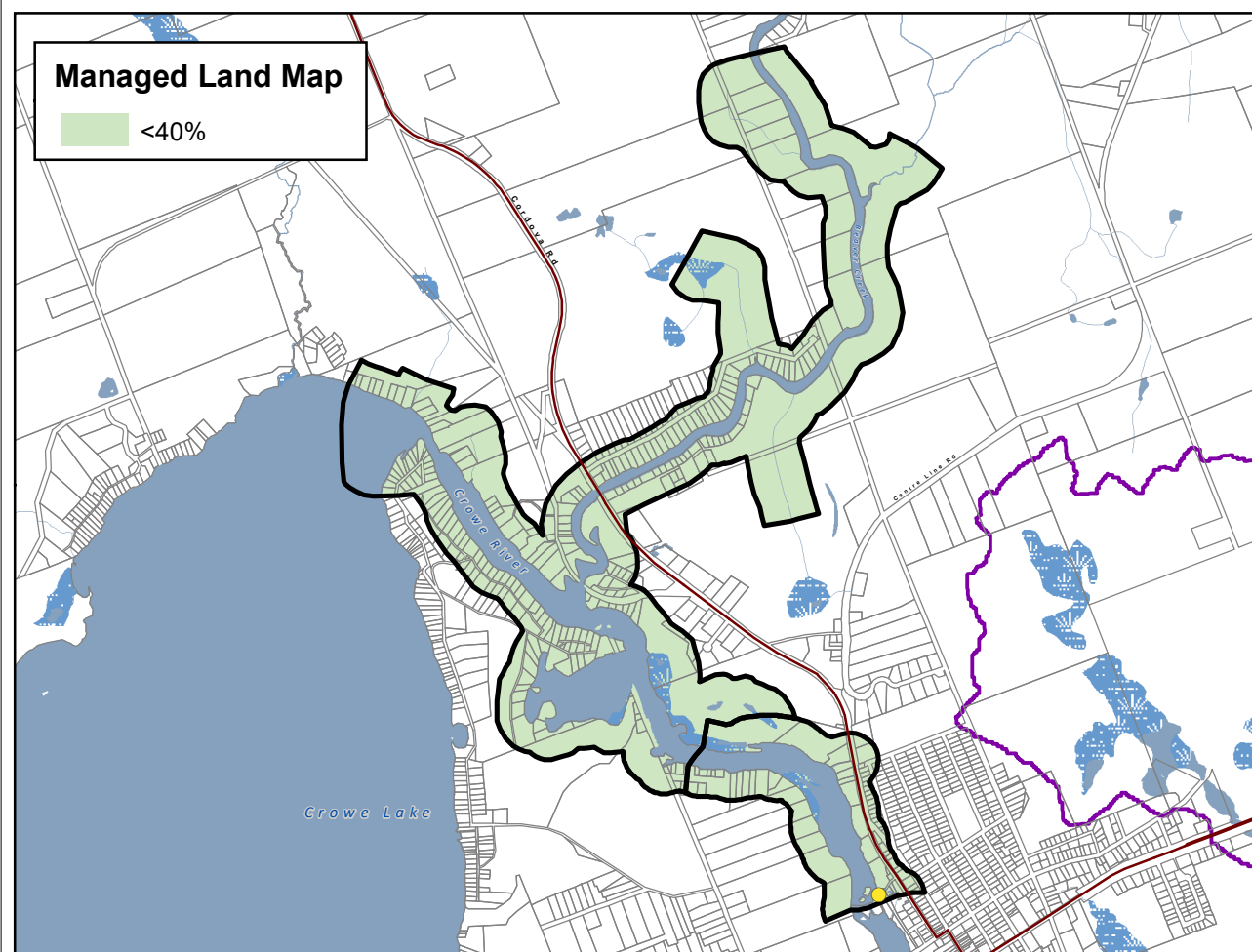


**Trent Conservation Coalition  
Source Protection Region**

[www.trentsourceprotection.on.ca](http://www.trentsourceprotection.on.ca)

This map has been prepared for the purpose of meeting the provincial requirements under the Clean Water Act, 2006. If it is proposed to use it for another purpose, it would be advisable to first consult with the responsible conservation authority.

PRODUCED BY Lower Trent Conservation on behalf of the Trent Conservation Coalition Source Protection Committee, March 2011 (Updated November 2022), with data supplied under licence by members of the Ontario Geospatial Data Exchange.



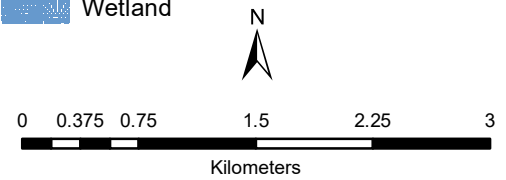
**Campbellford Municipal Surface Water System**

**Lower Trent Source Protection Area**

**Managed Land, Livestock Density & Total Impervious Surface Area**

**Legend**

- Surface Water Intake
- Railway
- Watercourse
- Main Road
- Highway
- Multi Lane Highway
- Property Boundary
- Source Protection Region
- Source Protection Area
- Upper and Single Tier Municipality
- Lower Tier Municipality
- Intake Protection Zones
- Waterbody
- Wetland

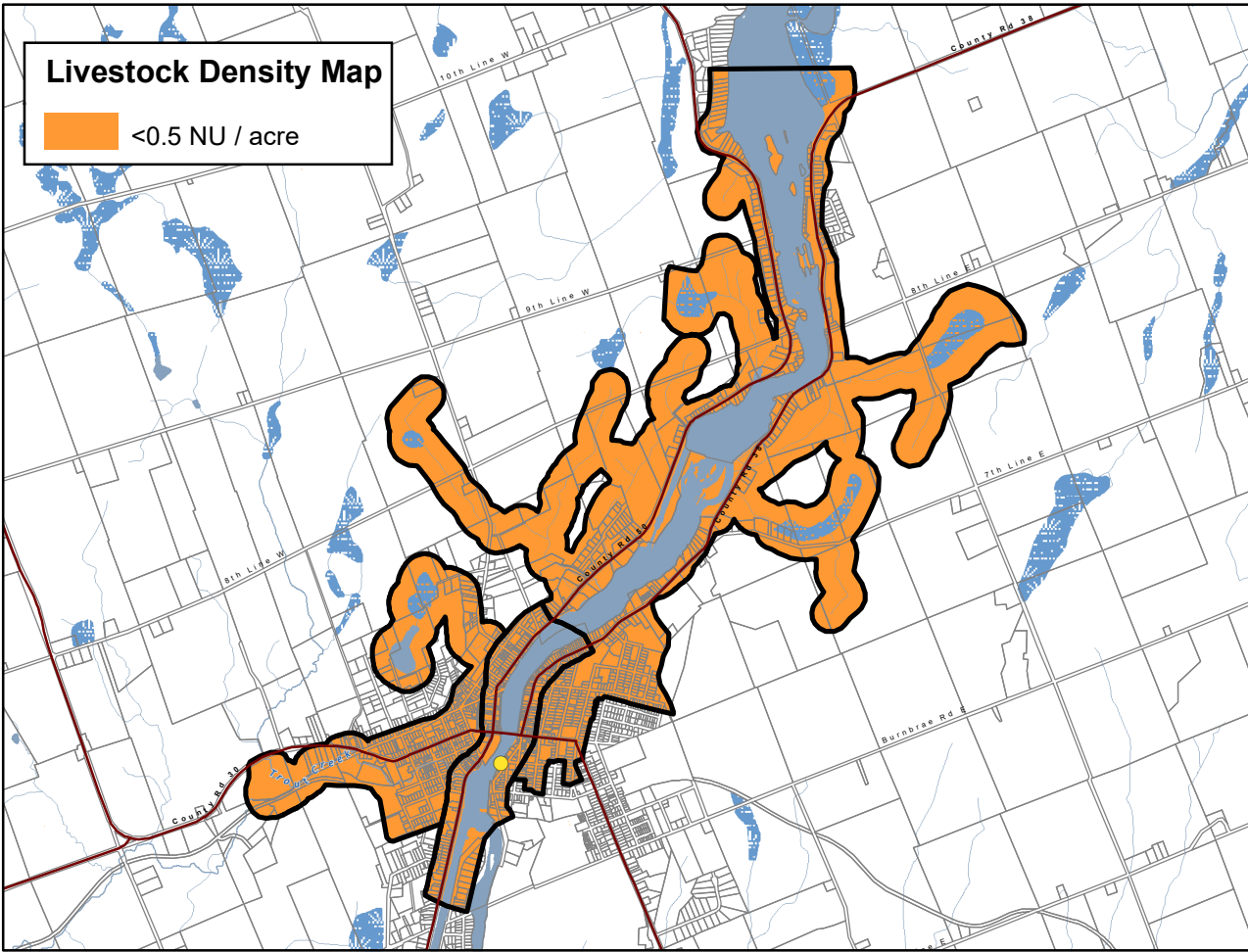
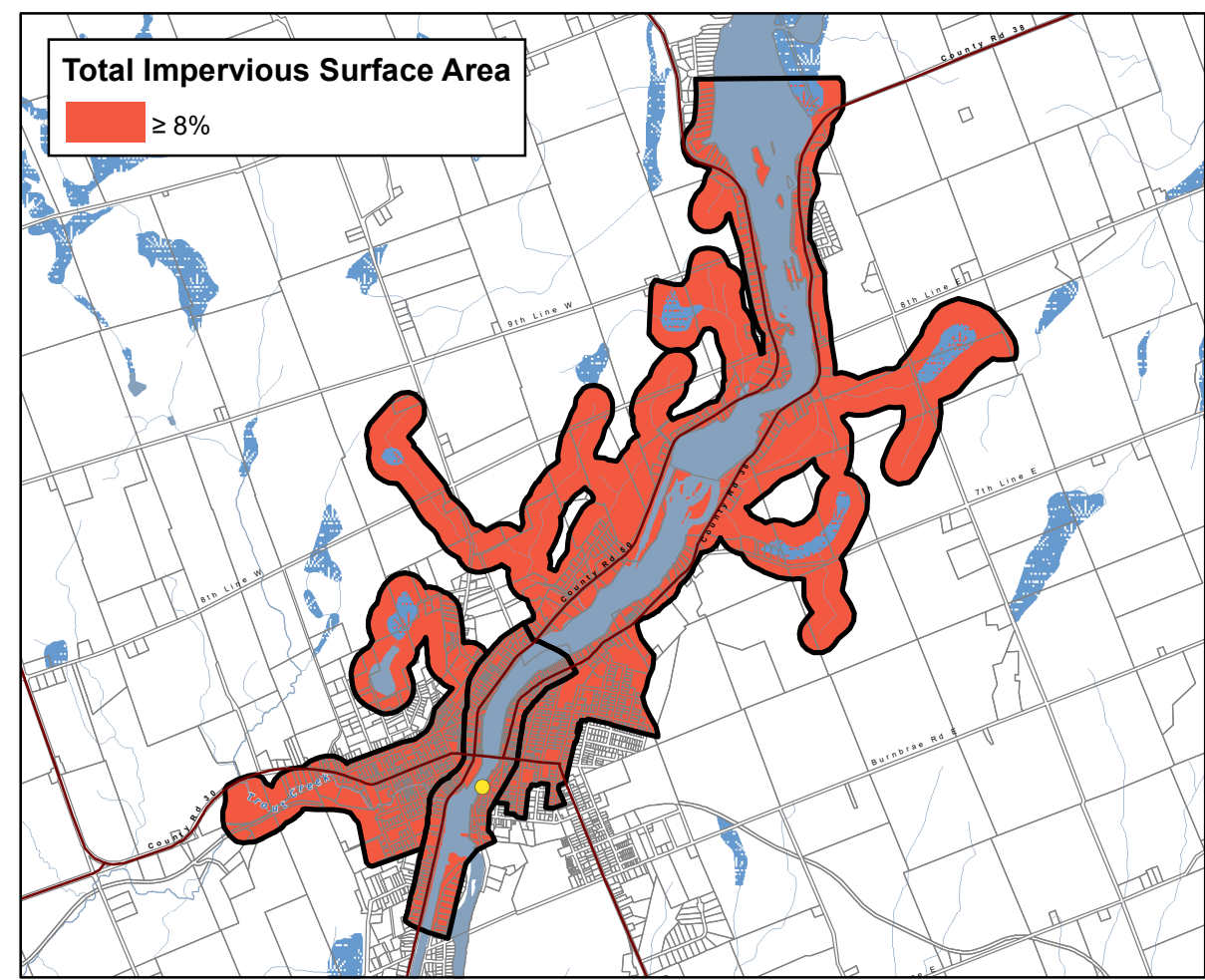
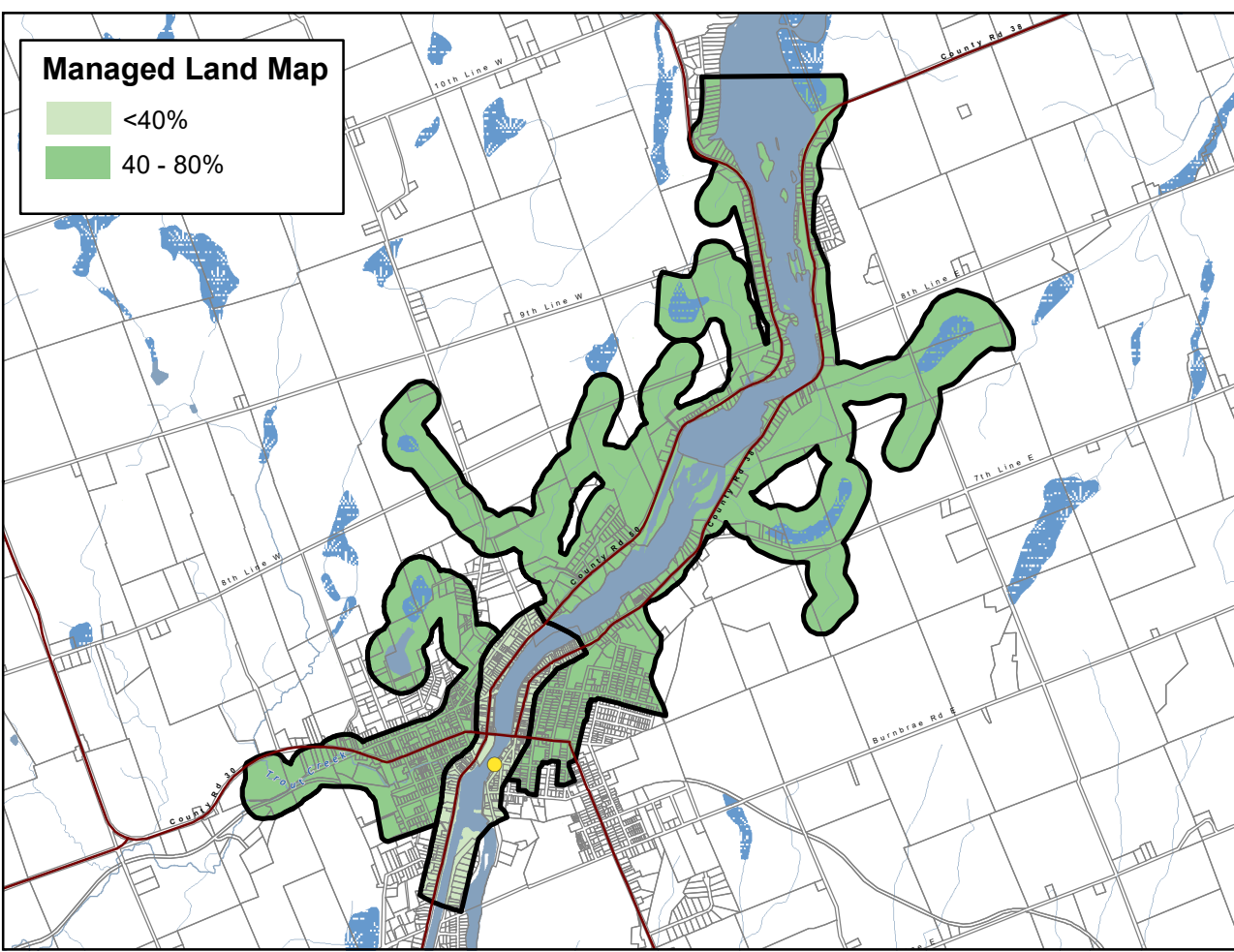


**Trent Conservation Coalition Source Protection Region**

[www.trentsourceprotection.on.ca](http://www.trentsourceprotection.on.ca)

This map has been prepared for the purpose of meeting the provincial requirements under the Clean Water Act, 2006. If it is proposed to use it for another purpose, it would be advisable to first consult with the responsible conservation authority.

PRODUCED BY Lower Trent Conservation on behalf of the Trent Conservation Coalition Source Protection Committee, March 2011. (Updated November 2022), with data supplied under licence by members of the Ontario Geospatial Data Exchange.

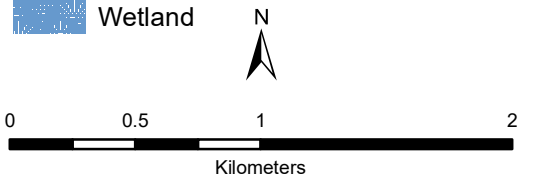


**Warkworth Municipal Surface Water System  
Lower Trent Source Protection Area**

**Managed Land, Livestock Density & Total Impervious Surface Area**

**Legend**

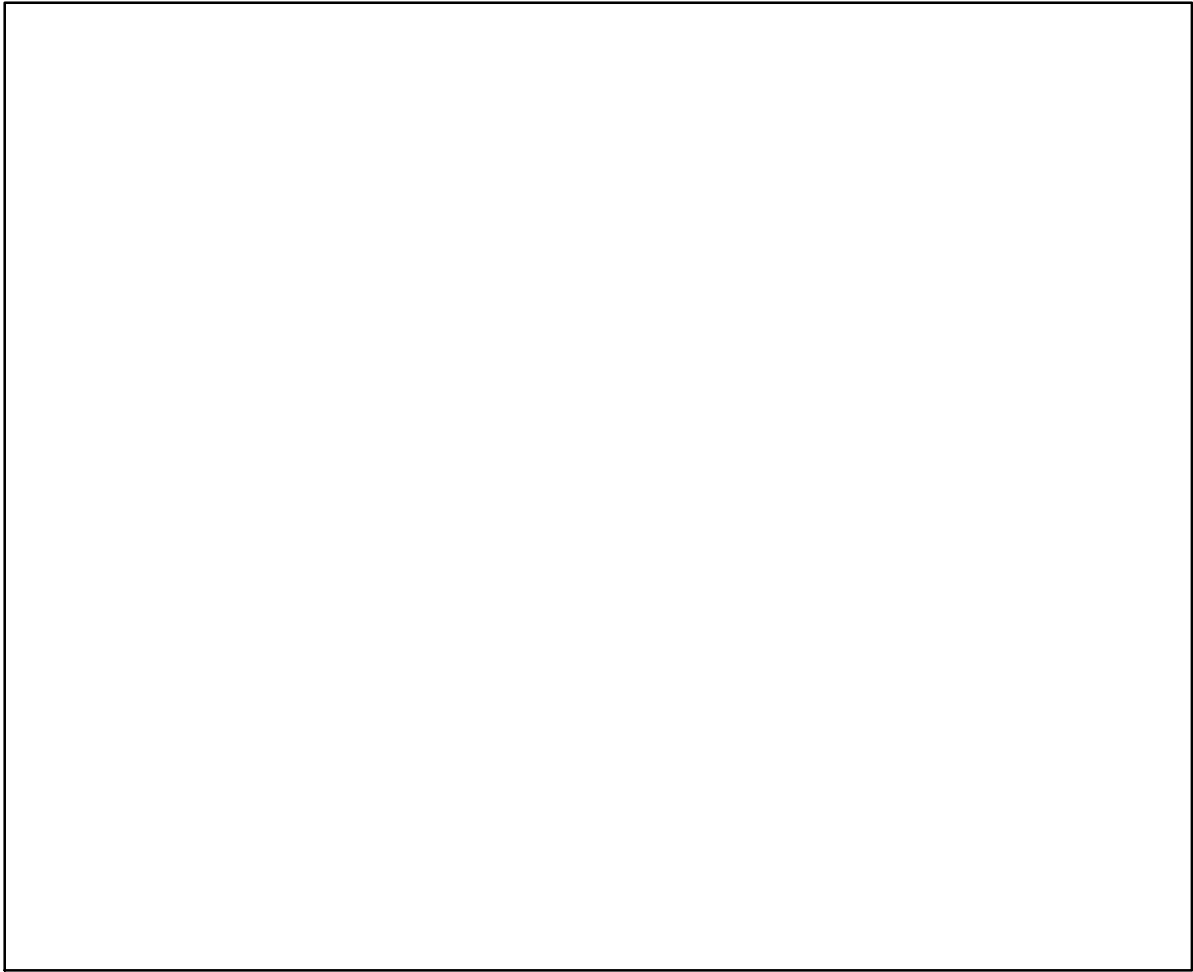
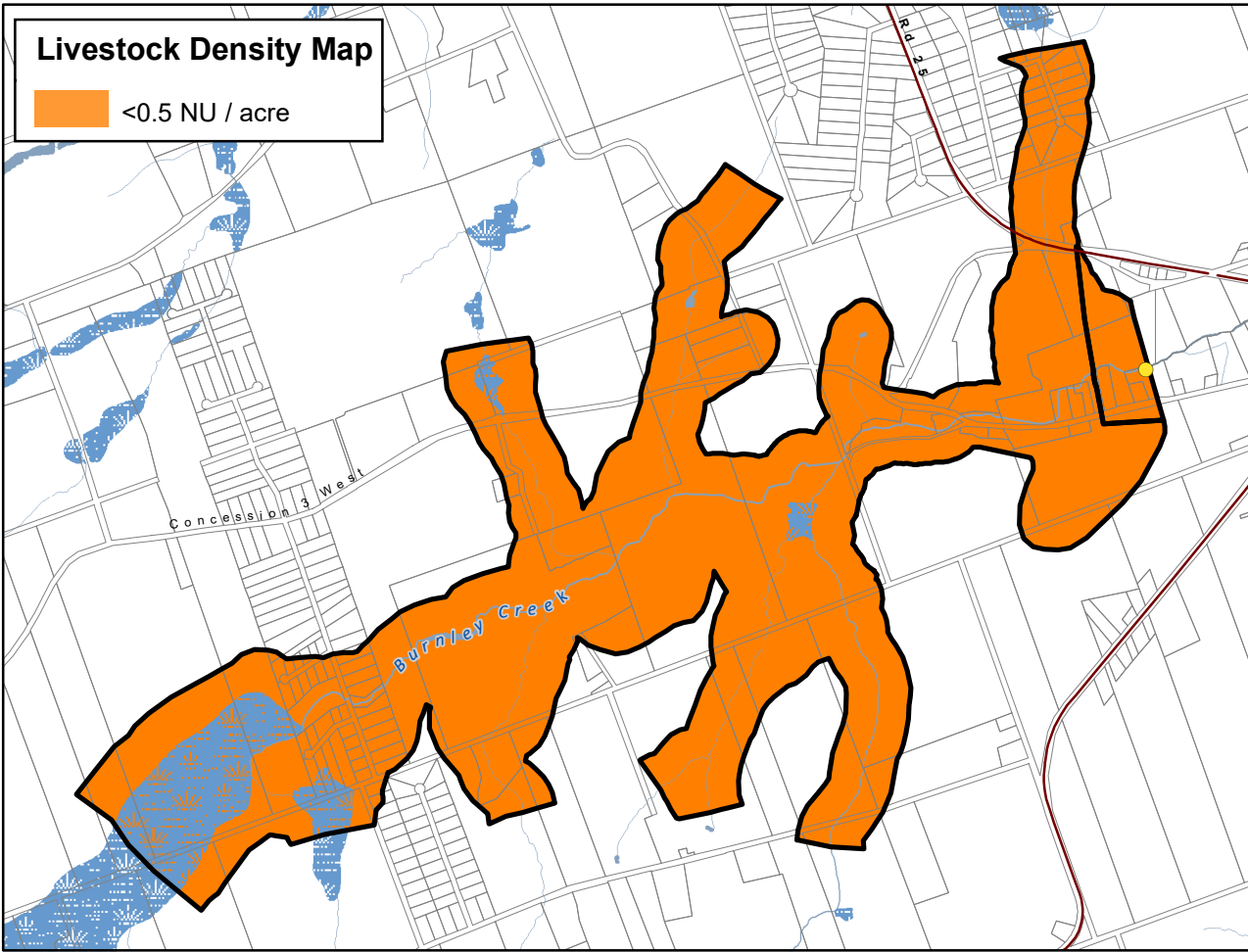
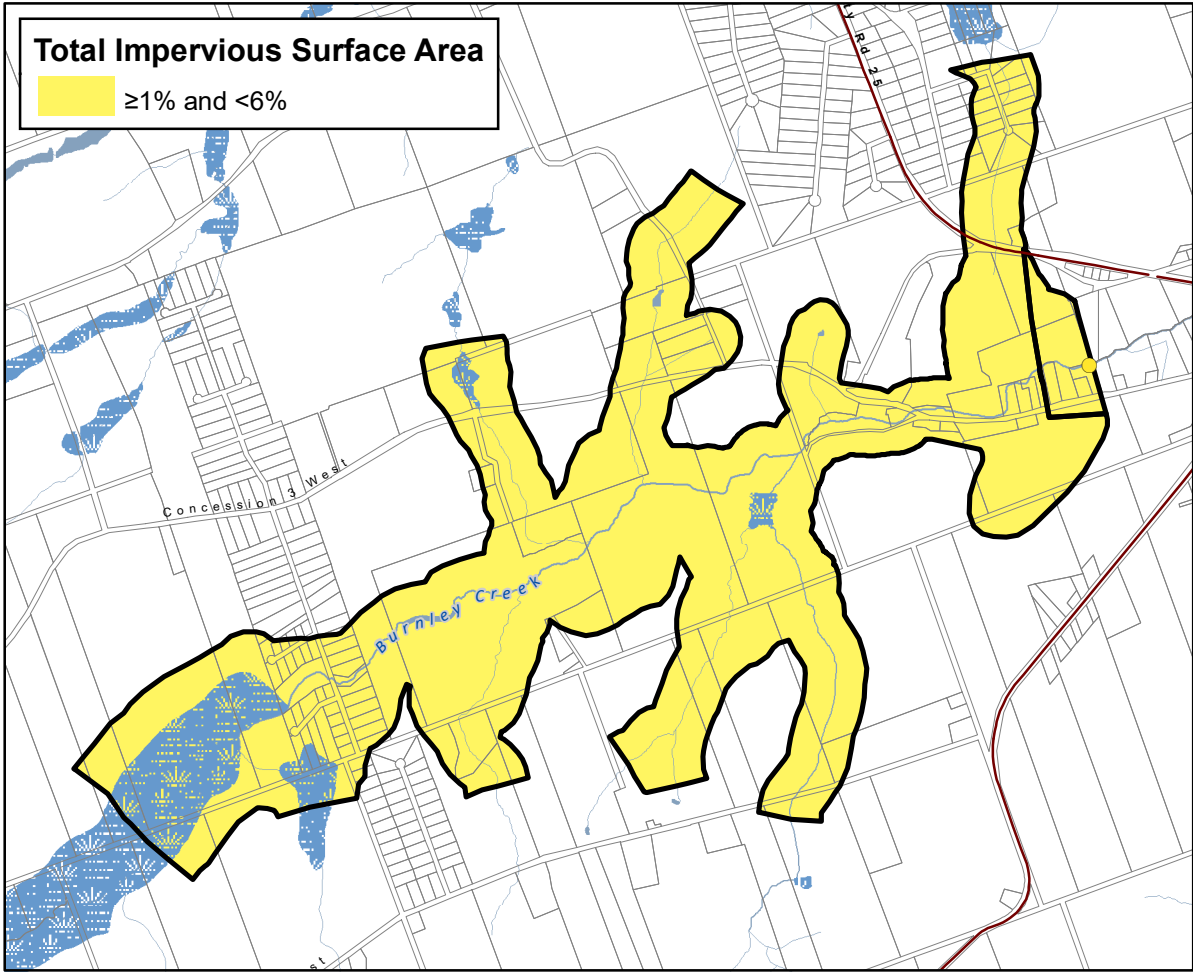
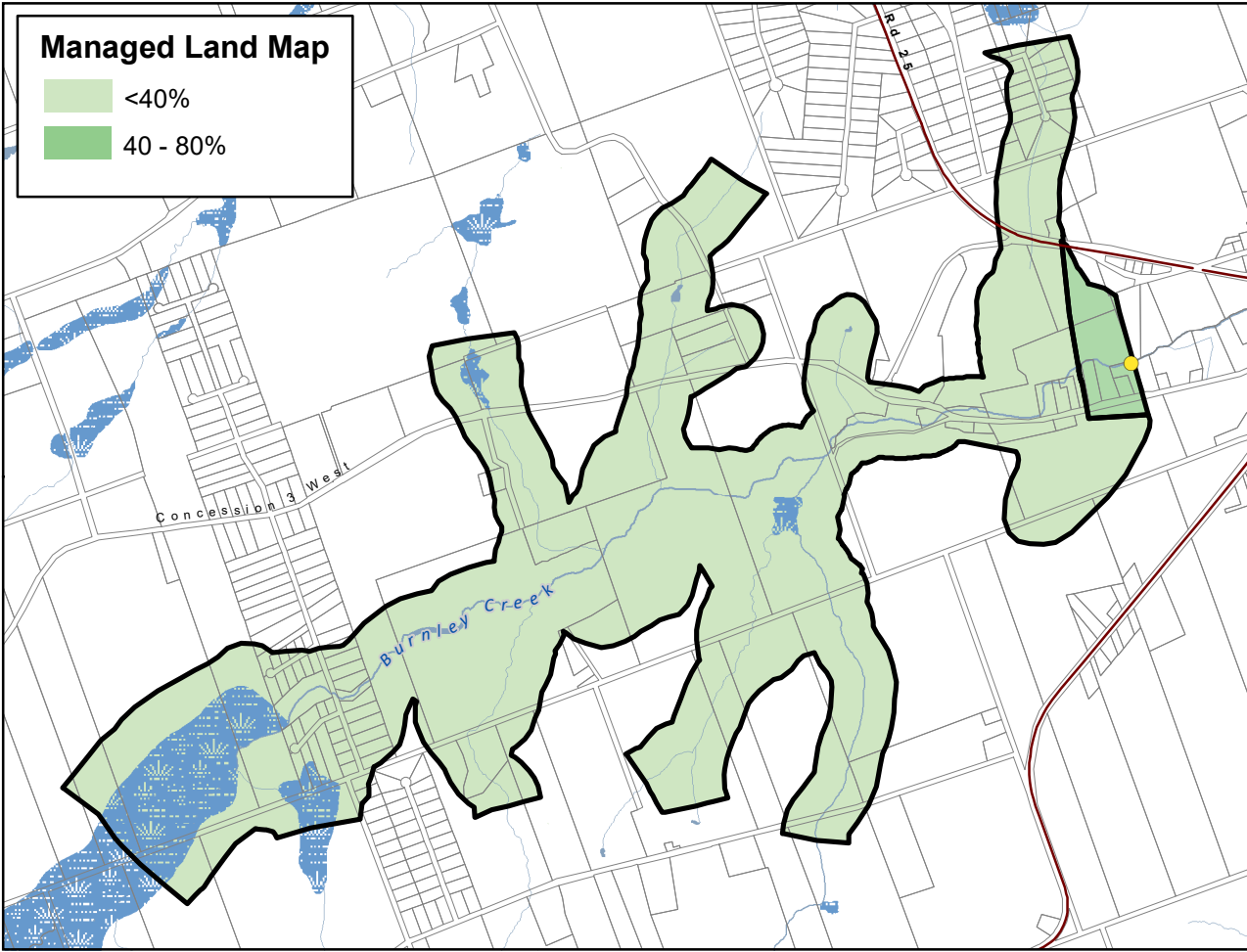
- Surface Water Intake
- Railway
- Watercourse
- Main Road
- Highway
- Multi Lane Highway
- Property Boundary
- Source Protection Region
- Source Protection Area
- Upper and Single Tier Municipality
- Lower Tier Municipality
- Waterbody
- Wetland

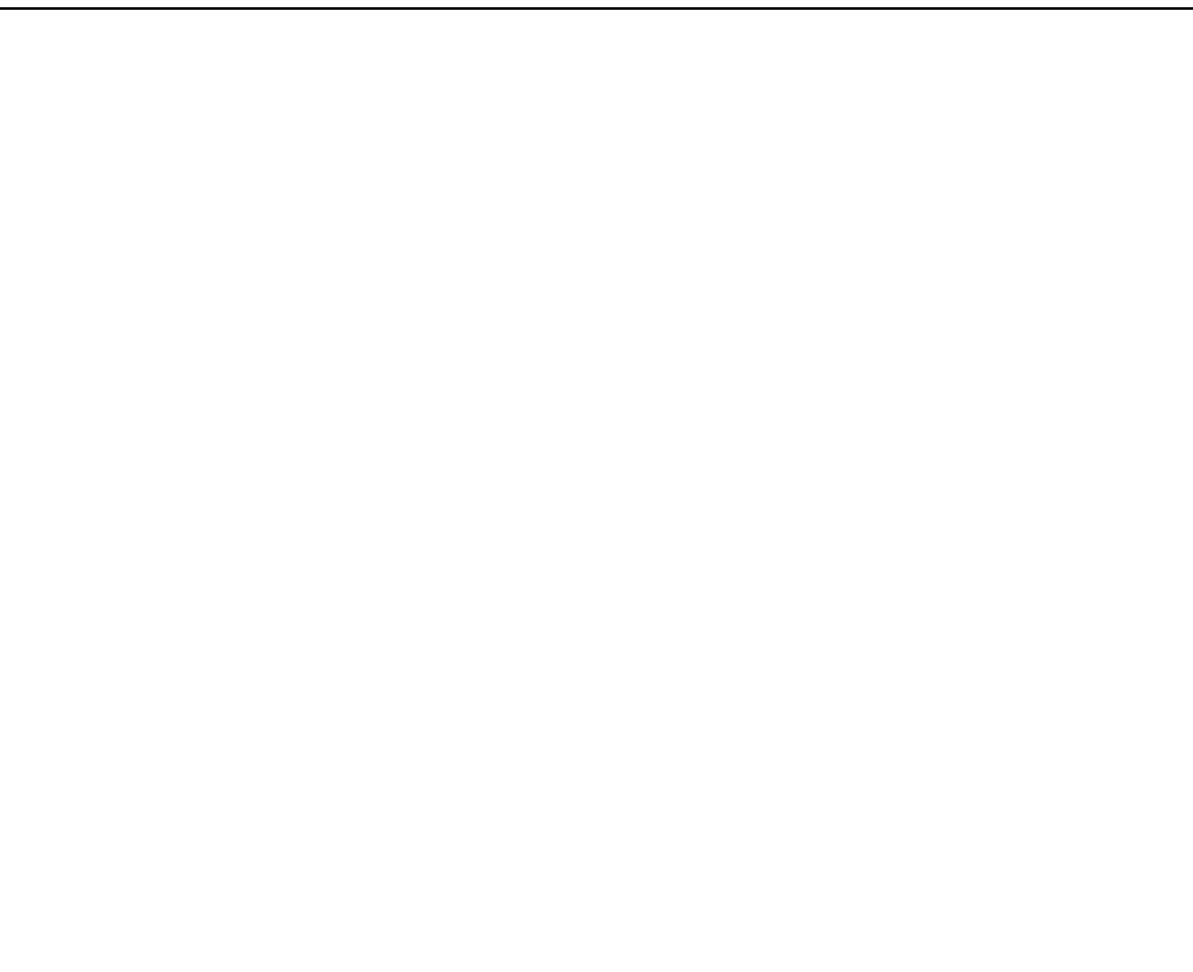
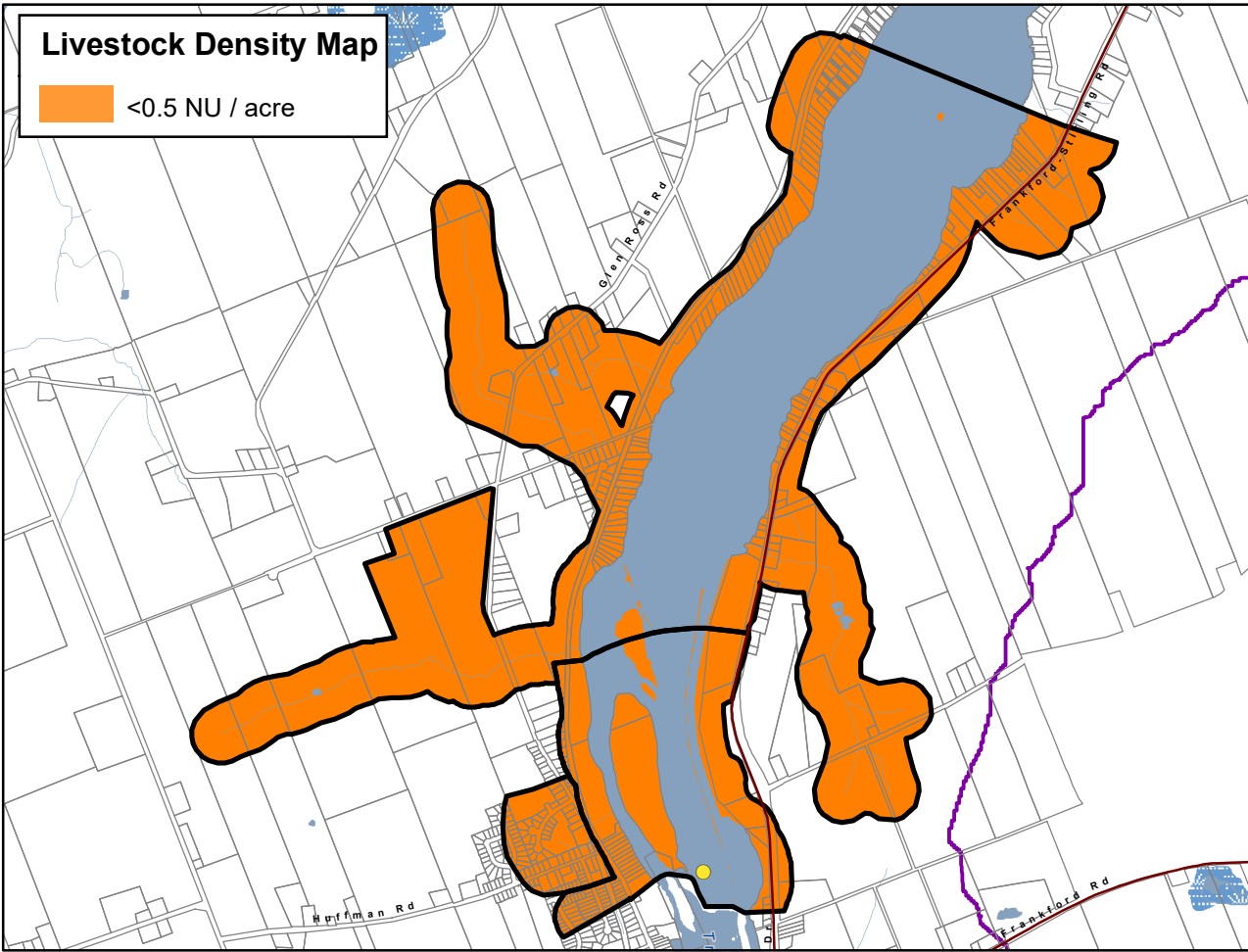
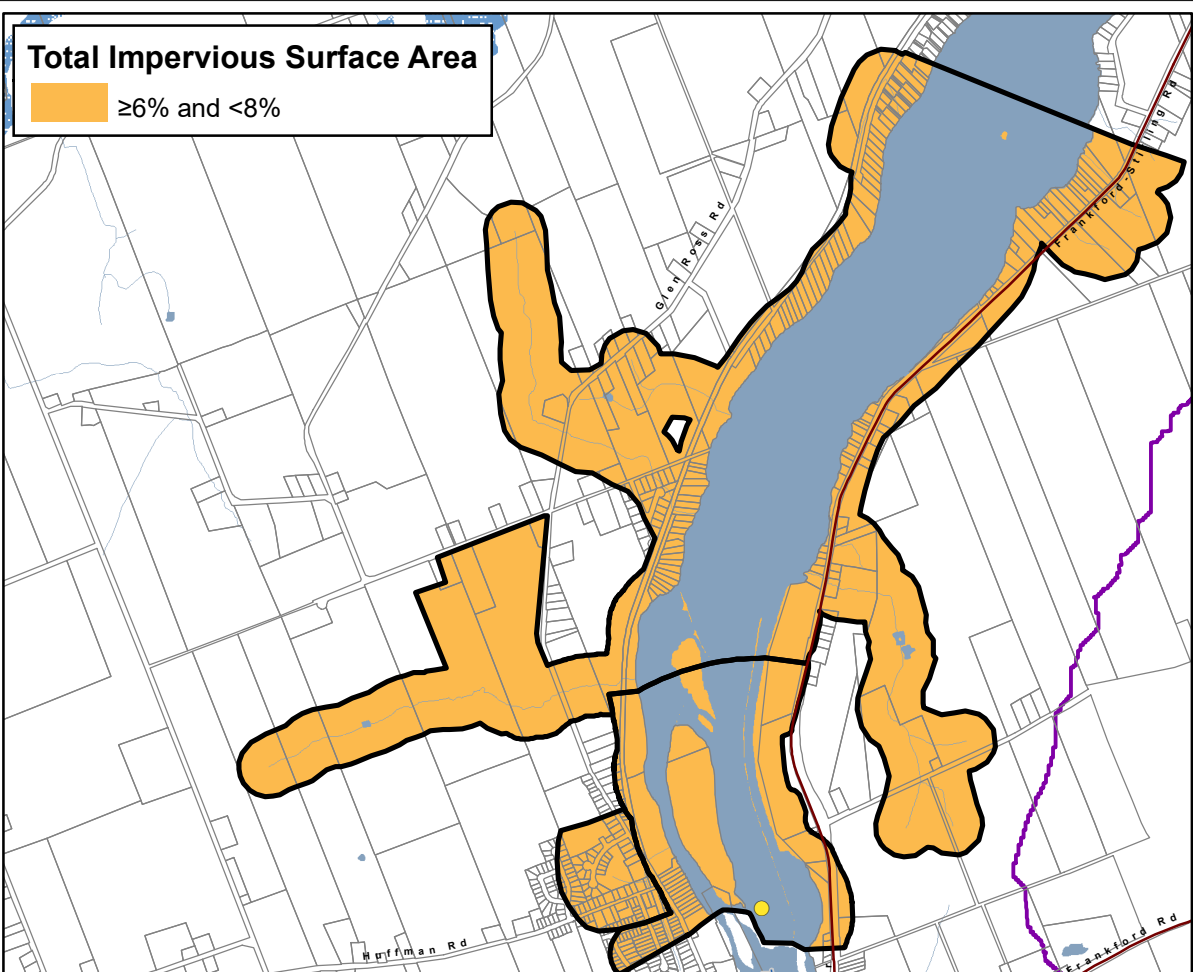
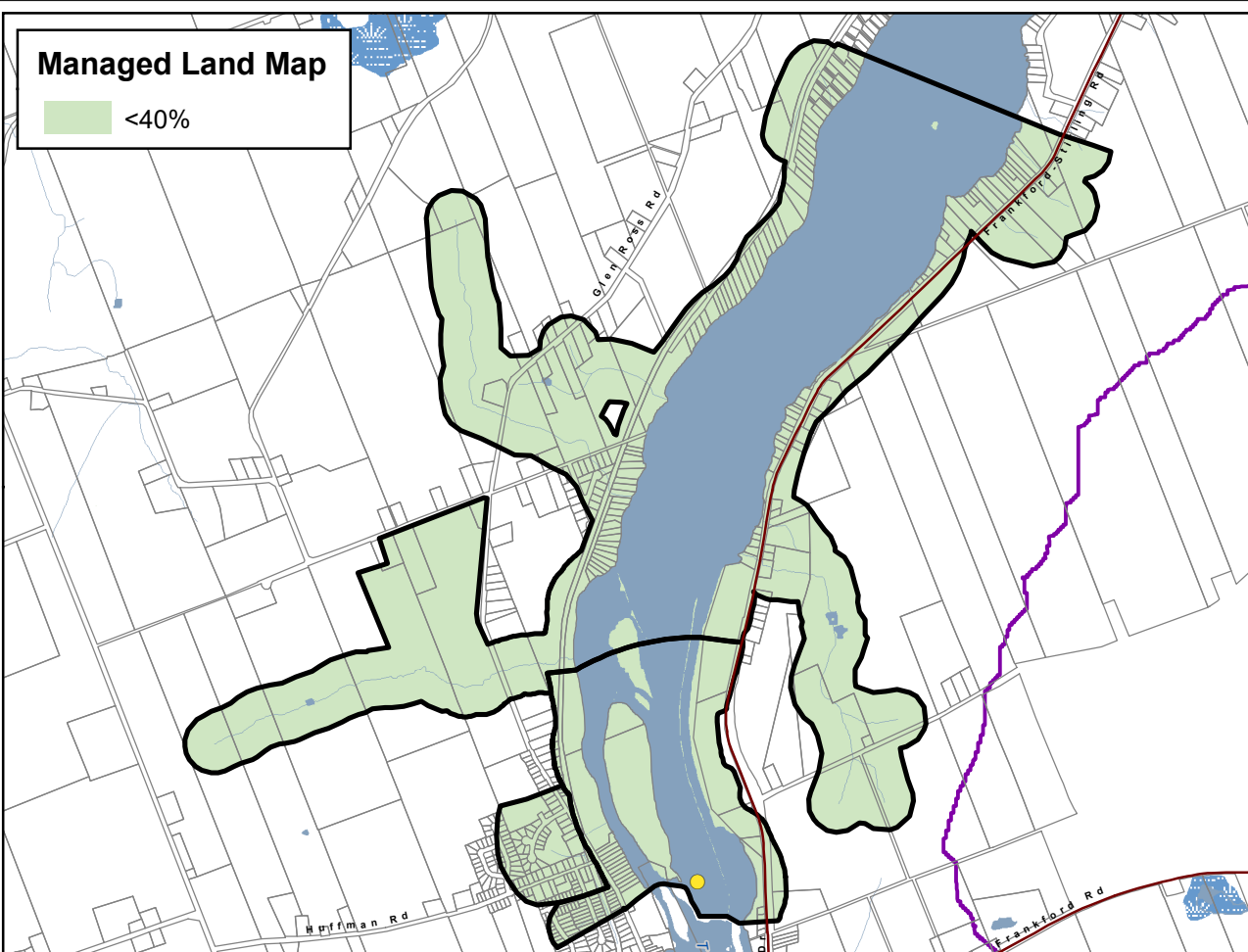


**Trent Conservation Coalition  
Source Protection Region**  
[www.trentsourceprotection.on.ca](http://www.trentsourceprotection.on.ca)

This map has been prepared for the purpose of meeting the provincial requirements under the Clean Water Act, 2006. If it is proposed to use it for another purpose, it would be advisable to first consult with the responsible conservation authority.

PRODUCED BY Lower Trent Conservation on behalf of the Trent Conservation Coalition Source Protection Committee, March 2011 (Updated November 2022), with data supplied under licence by members of the Ontario Geospatial Data Exchange.

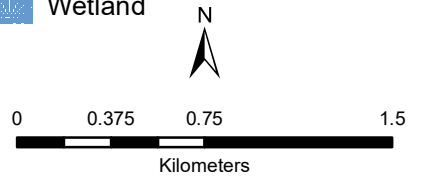




**Frankford Municipal Surface Water System**  
**Lower Trent Source Protection Area**

**Managed Land, Livestock Density & Total Impervious Surface Area**

- Legend**
- Surface Water Intake
  - Railway
  - Watercourse
  - Main Road
  - Highway
  - Multi Lane Highway
  - Property Boundary
  - Source Protection Region
  - Source Protection Area
  - Upper and Single Tier Municipality
  - Lower Tier Municipality
  - Waterbody
  - Wetland



**Trent Conservation Coalition Source Protection Region**  
[www.trentsourceprotection.on.ca](http://www.trentsourceprotection.on.ca)

This map has been prepared for the purpose of meeting the provincial requirements under the Clean Water Act, 2006. If it is proposed to use it for another purpose, it would be advisable to first consult with the responsible conservation authority.

PRODUCED BY Lower Trent Conservation on behalf of the Trent Conservation Coalition Source Protection Committee, March 2011 (Updated November 2022), with data supplied under licence by members of the Ontario Geospatial Data Exchange.

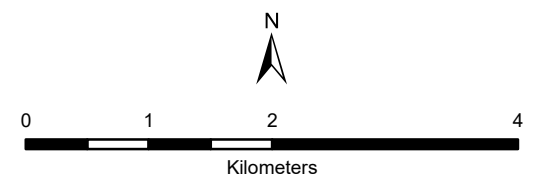


**Trent  
Municipal Surface  
Well System  
Lower Trent Source  
Protection Area**

**Managed Land, Livestock  
Density & Total  
Impervious Surface Area**

**Legend**

- Surface Water Intake
- Railway
- Watercourse
- Main Road
- Highway
- Multi Lane Highway
- Property Boundary
- Source Protection Region
- Source Protection Area
- Upper and Single Tier Municipality
- Lower Tier Municipality
- Waterbody
- Wetland

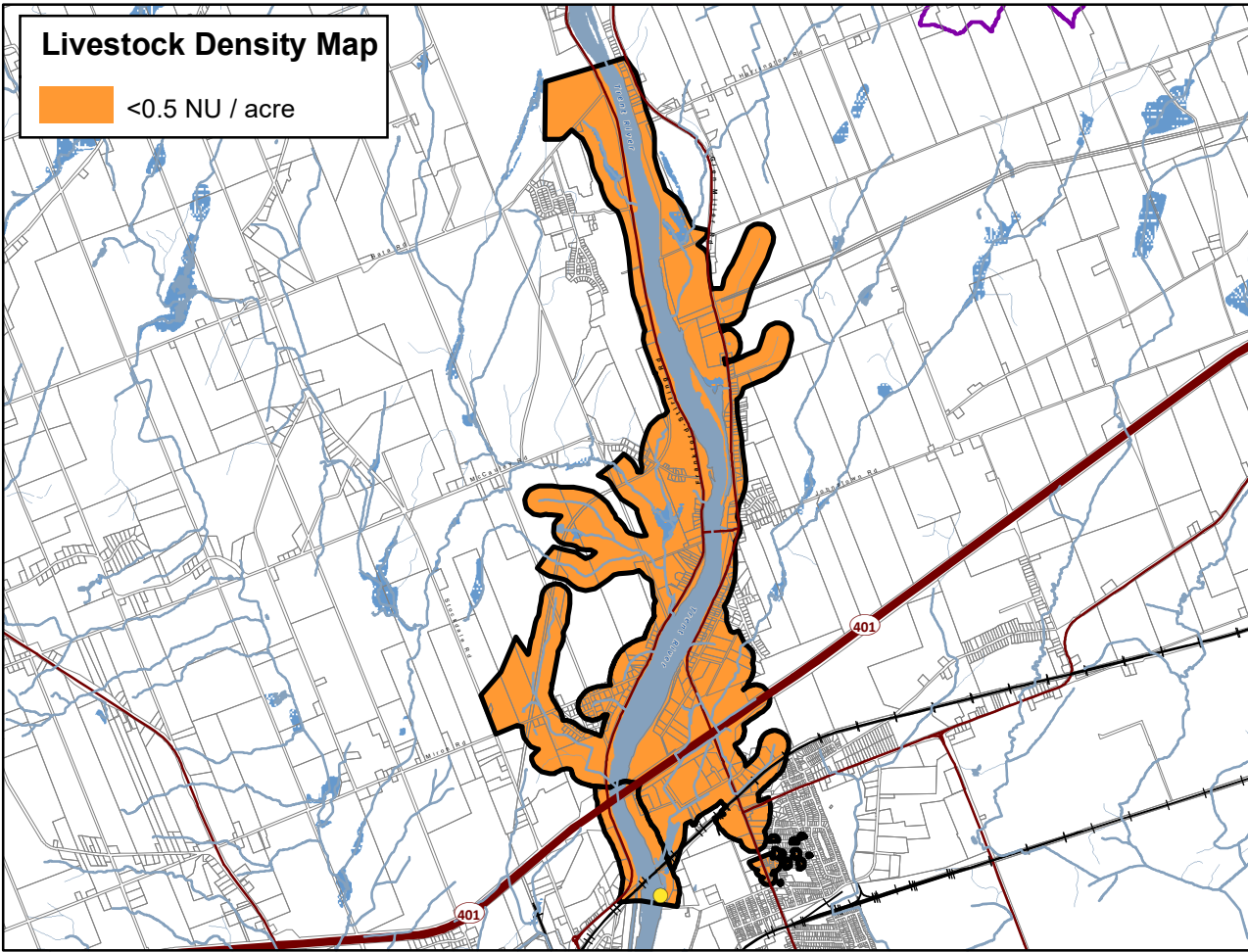
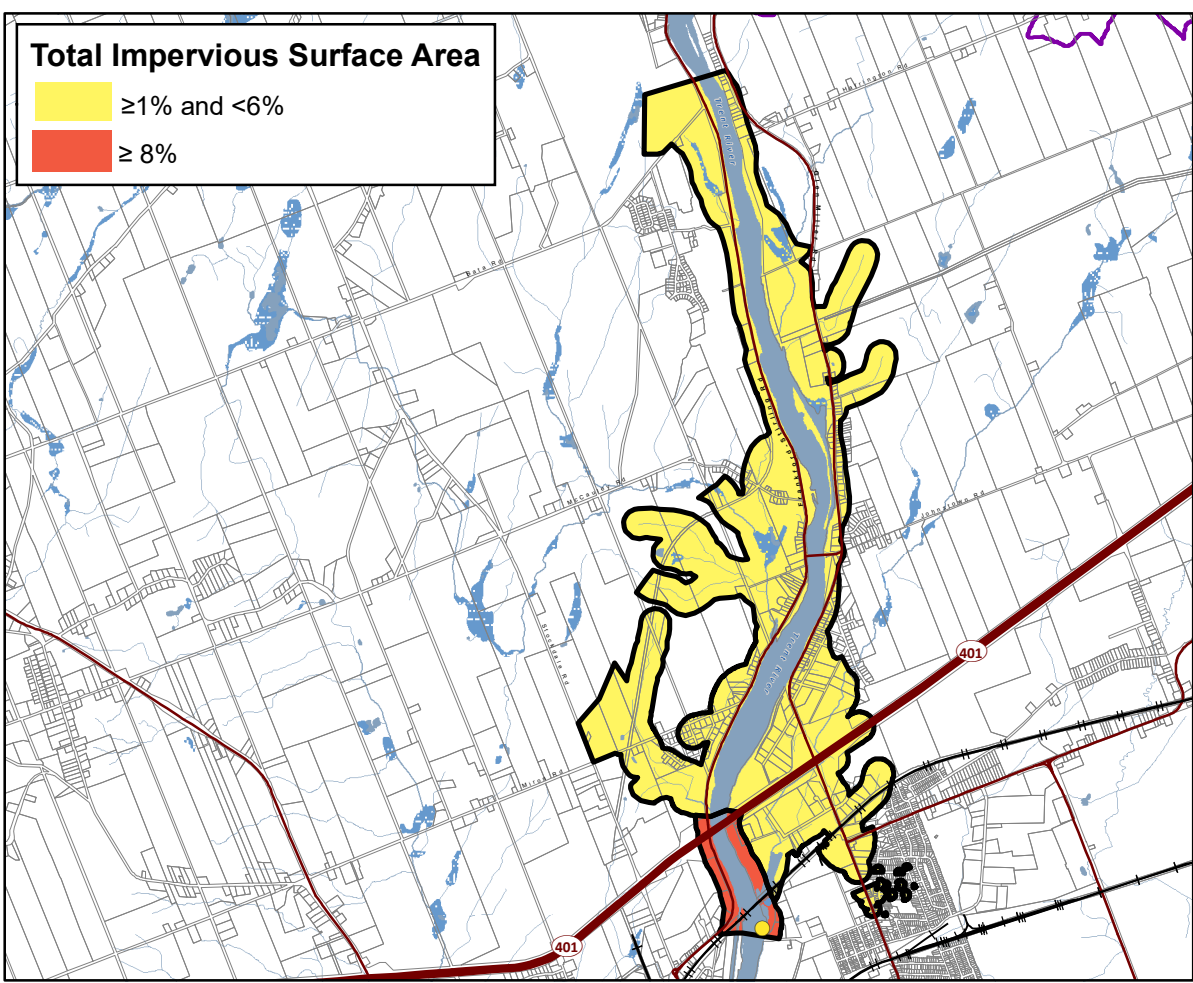
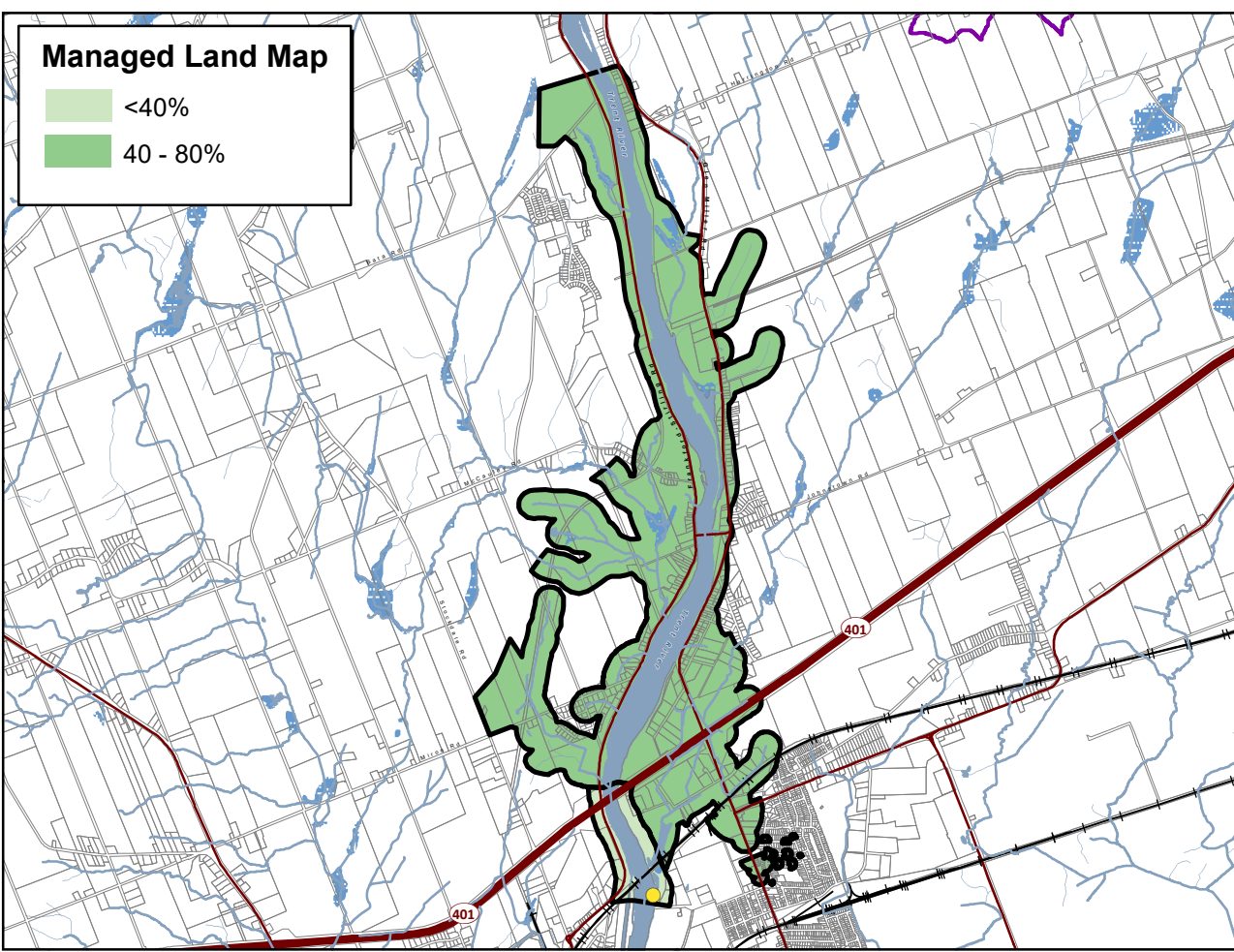


**Trent Conservation Coalition  
Source Protection Region**

[www.trentsourceprotection.on.ca](http://www.trentsourceprotection.on.ca)

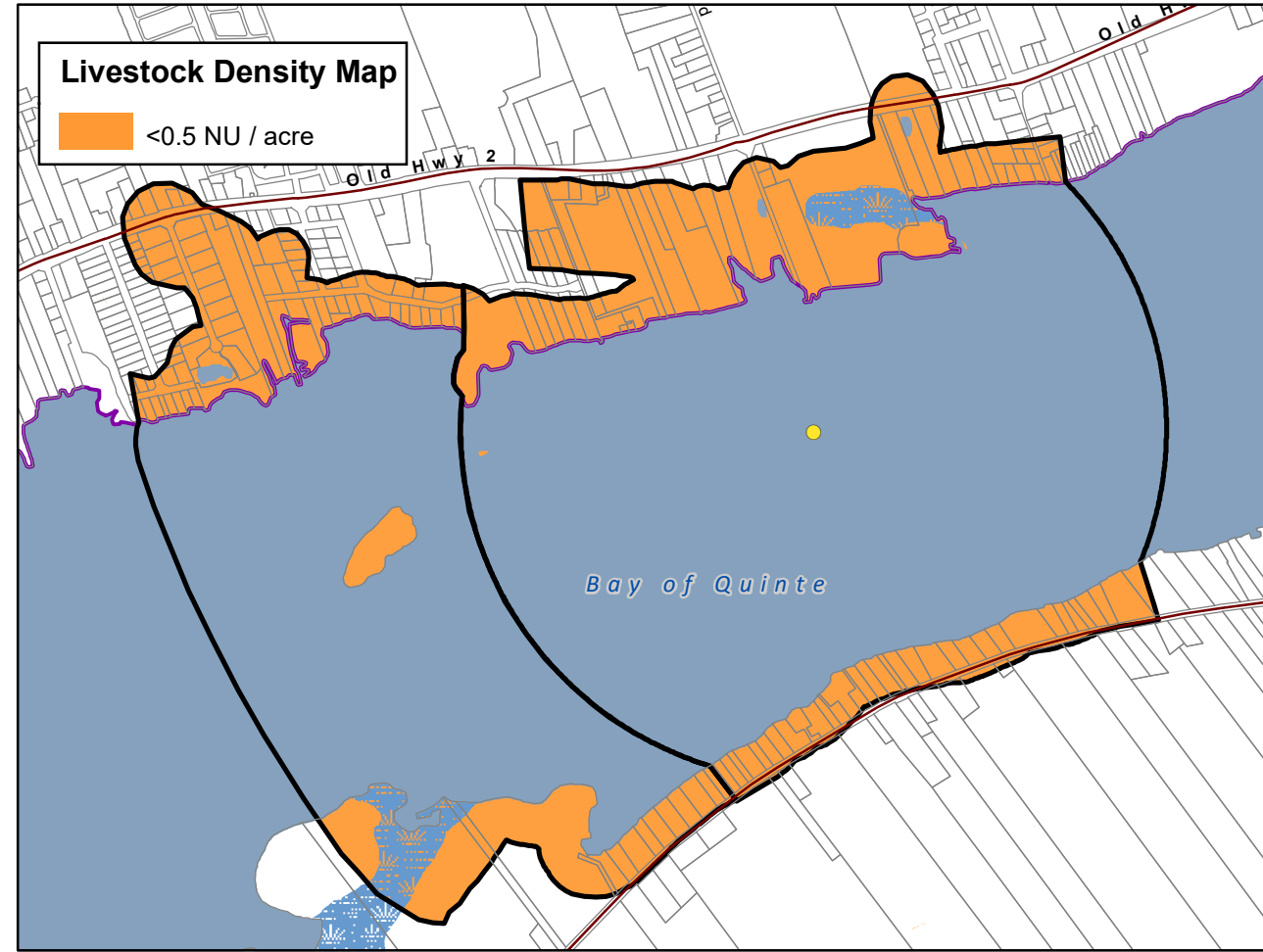
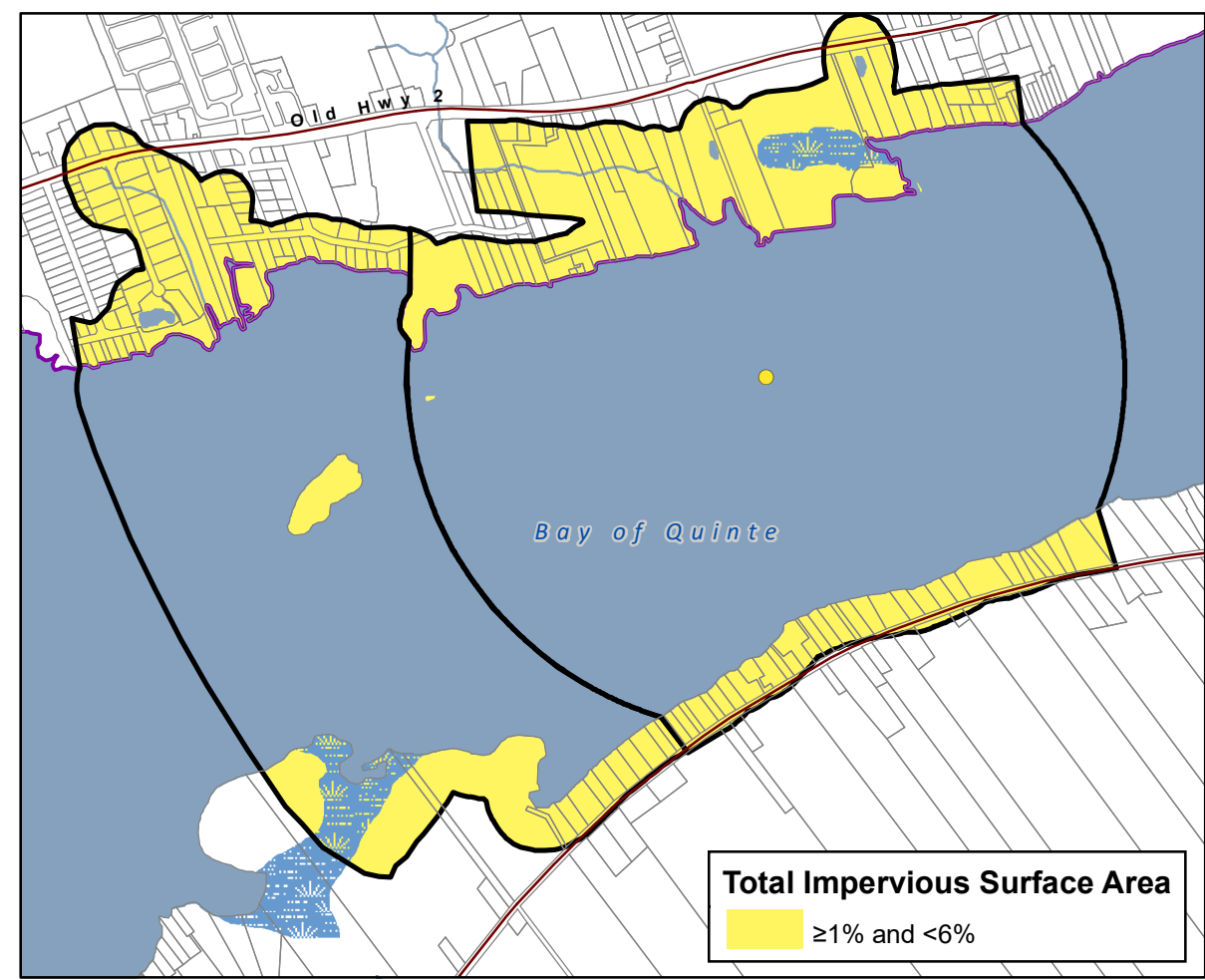
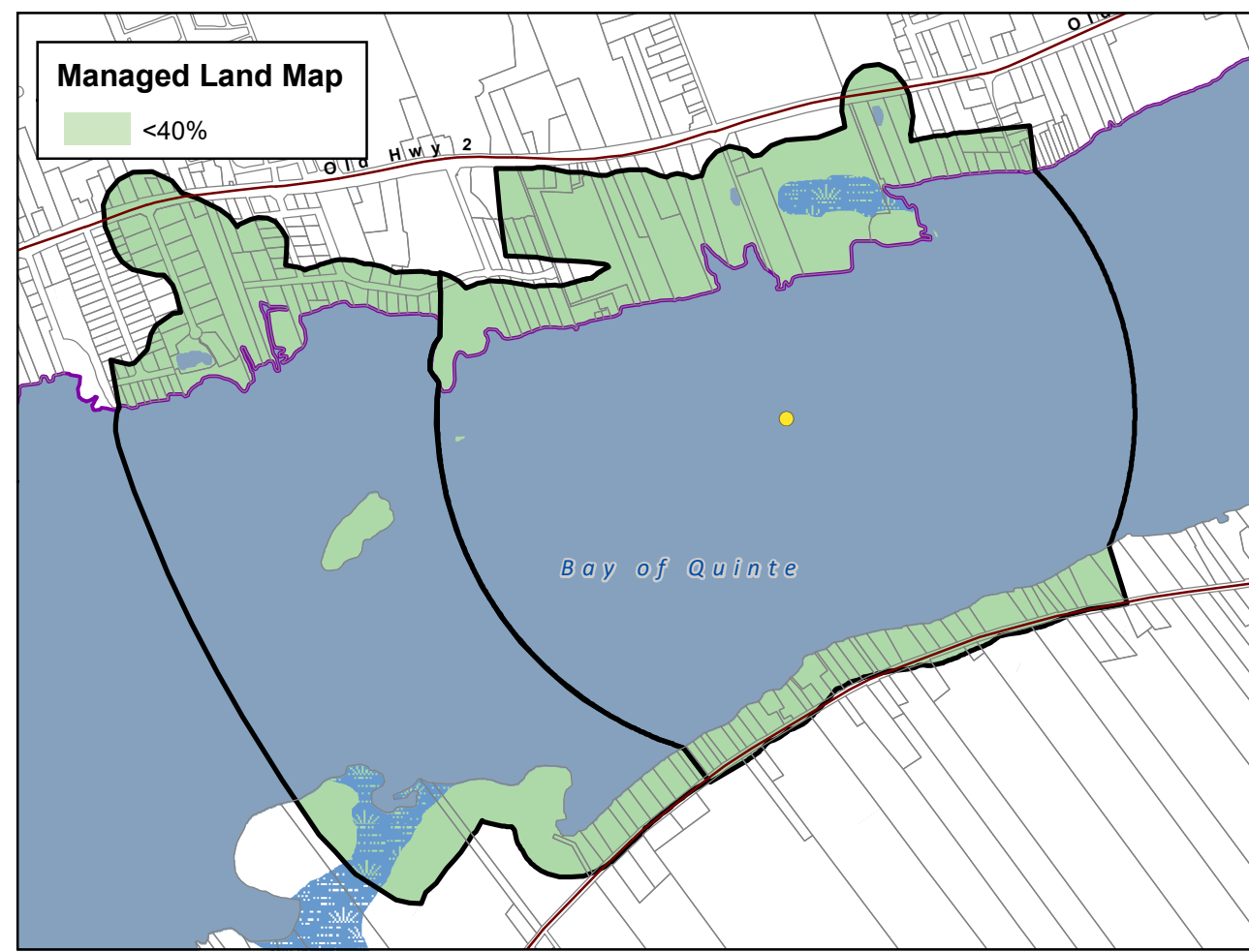
This map has been prepared for the purpose of meeting the provincial requirements under the Clean Water Act, 2006. If it is proposed to use it for another purpose, it would be advisable to first consult with the responsible conservation authority.

PRODUCED BY Lower Trent Conservation on behalf of the Trent Conservation Coalition Source Protection Committee, March 2011  
(Updated November 2022), with data supplied under licence by members of the Ontario Geospatial Data Exchange.



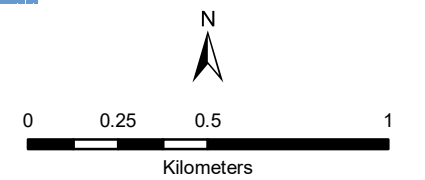
**Bayside Municipal Surface Water System  
Lower Trent Source Protection Area**

**Managed Land, Livestock Density & Total Impervious Surface Area**



**Legend**

- Surface Water Intake
- +— Railway
- Watercourse
- Main Road
- Highway
- Multi Lane Highway
- Property Boundary
- Source Protection Region
- Source Protection Area
- Upper and Single Tier Municipality
- Lower Tier Municipality
- Intake Protection Zones
- Waterbody
- Wetland



**Trent Conservation Coalition  
Source Protection Region**  
[www.trentsourceprotection.on.ca](http://www.trentsourceprotection.on.ca)

This map has been prepared for the purpose of meeting the provincial requirements under the Clean Water Act, 2006. If it is proposed to use it for another purpose, it would be advisable to first consult with the responsible conservation authority.

PRODUCED BY Lower Trent Conservation on behalf of the Trent Conservation Coalition Source Protection Committee, March 2011 (Updated November 2022), with data supplied under licence by members of the Ontario Geospatial Data Exchange.

