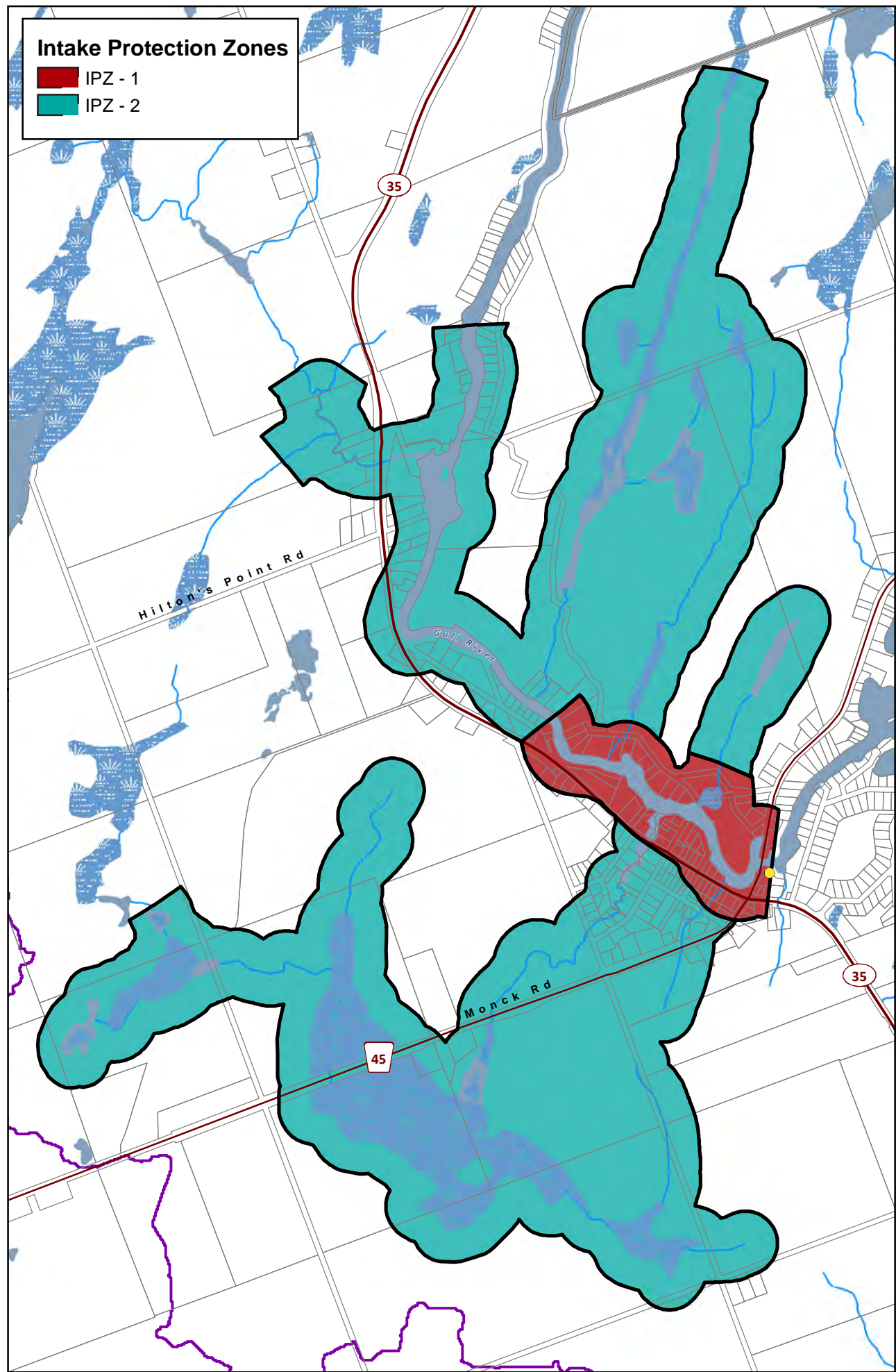
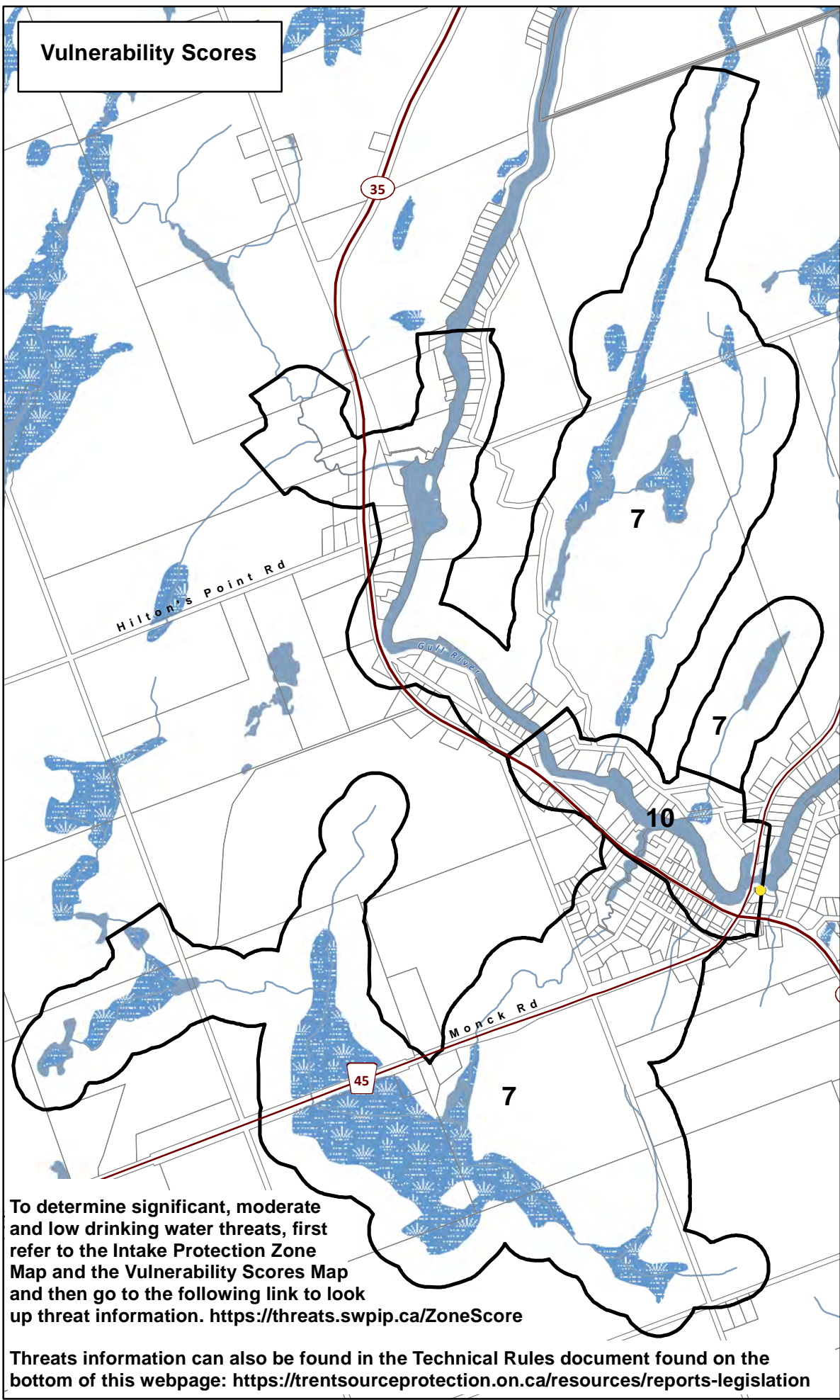


**Intake Protection Zones**

- IPZ - 1
- IPZ - 2



**Vulnerability Scores**



To determine significant, moderate and low drinking water threats, first refer to the Intake Protection Zone Map and the Vulnerability Scores Map and then go to the following link to look up threat information. <https://threats.swpip.ca/ZoneScore>

Threats information can also be found in the Technical Rules document found on the bottom of this webpage: <https://trentsourceprotection.on.ca/resources/reports-legislation>

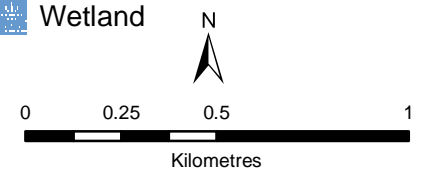


# Norland Municipal Surface Water System

## Kawartha - Haliburton Source Protection Area

### Intake Protection Zones & Vulnerability Scores (IPZ 1 & 2)

- Surface Water Intake
- Railway
- Watercourse
- Main Road
- Highway
- Multi Lane Highway
- Property Boundary
- Source Protection Region
- Source Protection Area
- Lower and Single Tier Municipality
- Upper Tier Municipality
- Intake Protection Zones
- Waterbody
- Wetland



## Trent Conservation Coalition Source Protection Region

[www.trentsourceprotection.on.ca](http://www.trentsourceprotection.on.ca)

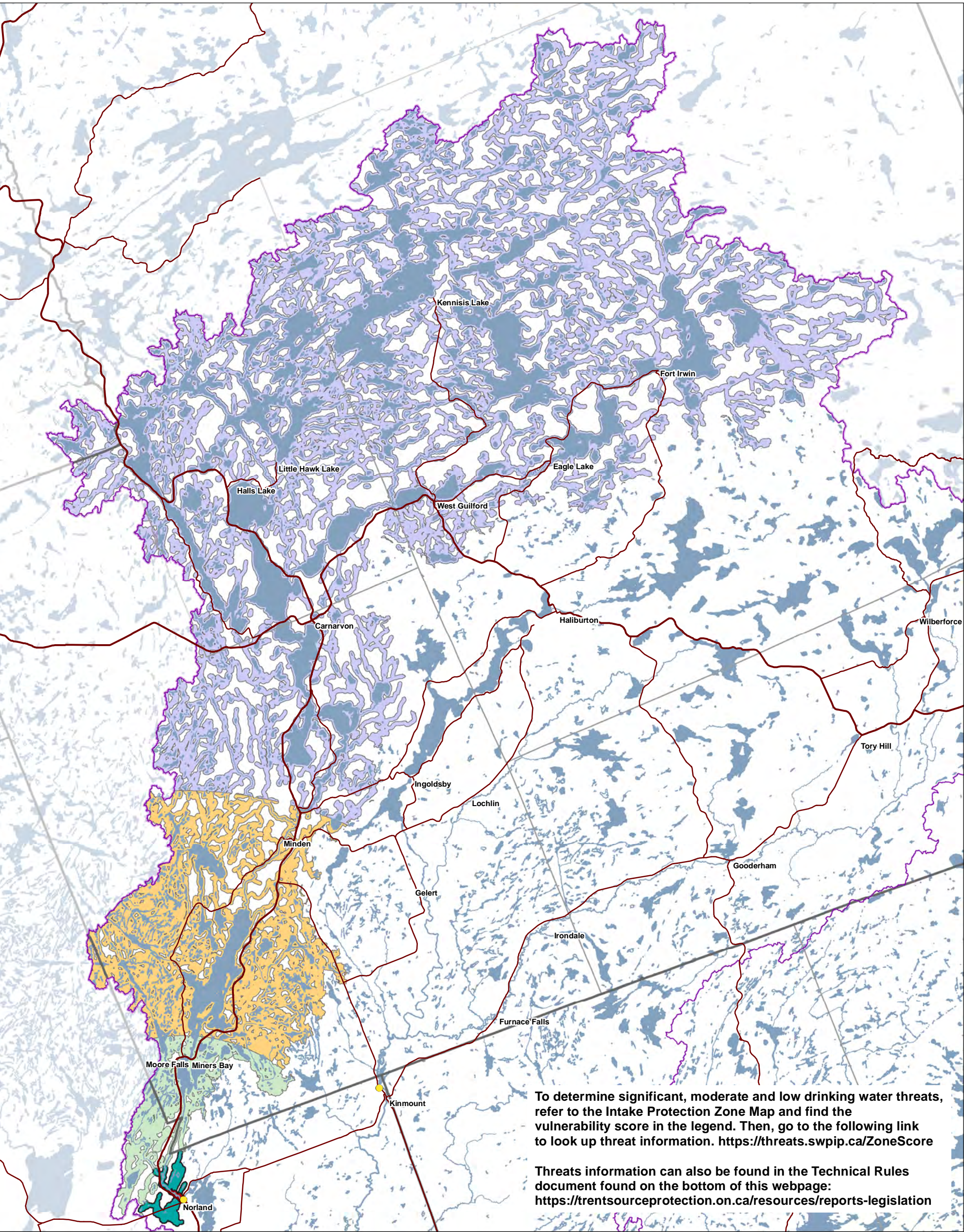
This map has been prepared for the purpose of meeting the provincial requirements under the Clean Water Act, 2006. If it is proposed to use it for another purpose, it would be advisable to first consult with the responsible conservation authority.

PRODUCED BY Lower Trent Conservation on behalf of the Trent Conservation Coalition Source Protection Committee, March 2011. (Updated January 2025), with data supplied under licence by members of the Ontario Geospatial Data Exchange.

Waterbodies and watercourses located within the extent of an intake protection zone are included in that zone.







This map has been prepared for the purpose of meeting the provincial requirements under the Clean Water Act, 2006. If it is proposed to use it for another purpose, it would be advisable to first consult with the responsible conservation authority.

PRODUCED BY Lower Trent Conservation on behalf of the Trent Conservation Coalition Source Protection Committee, March 2011, (Updated Jan 2025) with data supplied under licence by members of the Ontario Geospatial Data Exchange.

Waterbodies and watercourses located within the extent of an intake protection zone are included in that zone.

Ontario  
Made possible through the support of the Government of Ontario

- Legend

● Surface Water Intake

— Railway

— Watercourse

— Main Road

— Highway

— Multi Lane Highway

— Source Protection Region

— Source Protection Areas

— Upper Tier Municipality

— Lower and Single Tier Municipality

— Waterbody

Intake Protection Zones

■ IPZ-1

■ IPZ-2

■ IPZ-3a (Vulnerability Score = 6)

■ IPZ-3b (Vulnerability Score = 3)

■ IPZ-3c (Vulnerability Score = 2)
- 
- Trent Conservation Coalition

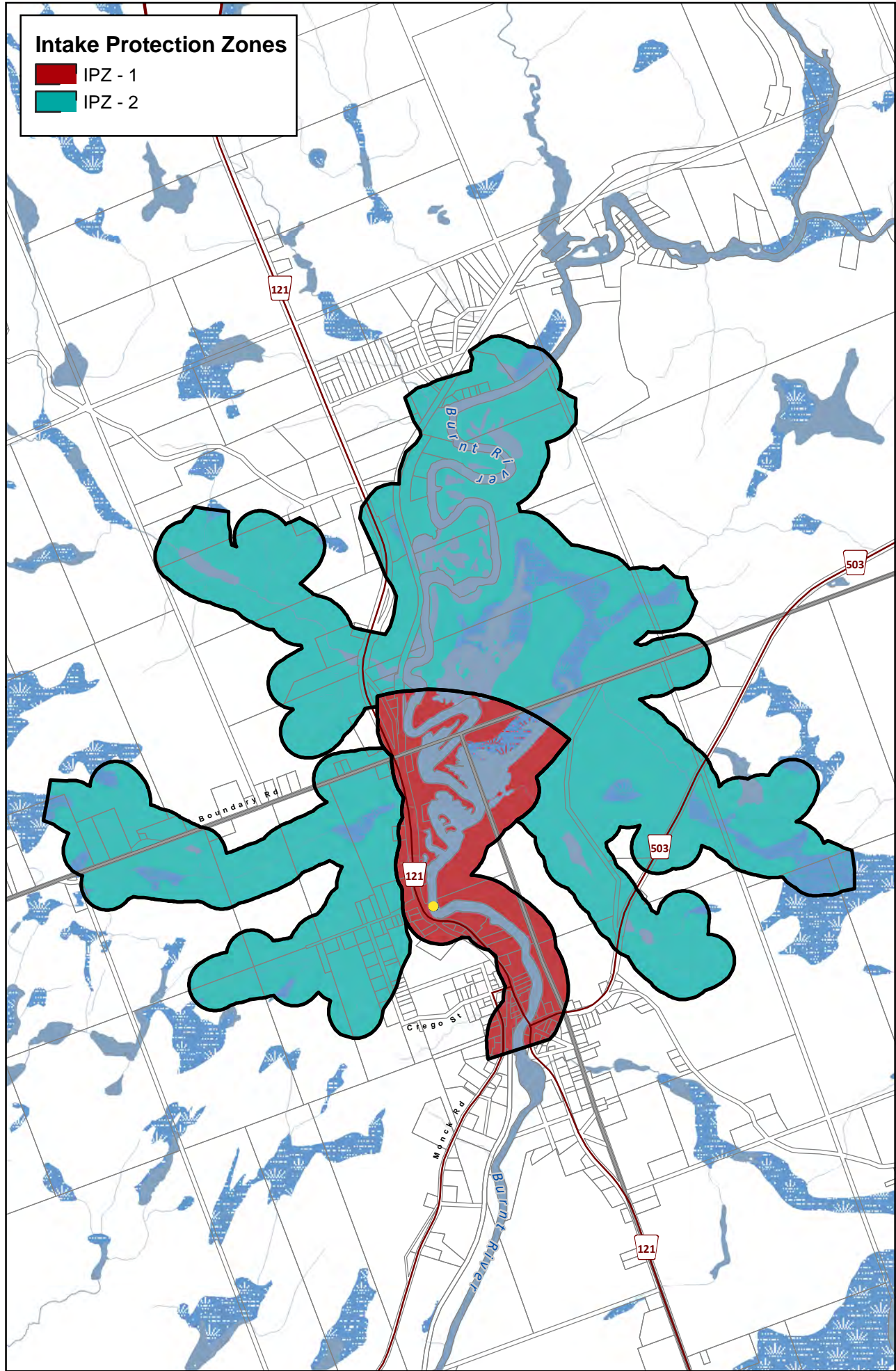
Source Protection Region

[www.trentsourceprotection.on.ca](http://www.trentsourceprotection.on.ca)
- Trent Assessment Report Map 4-1d

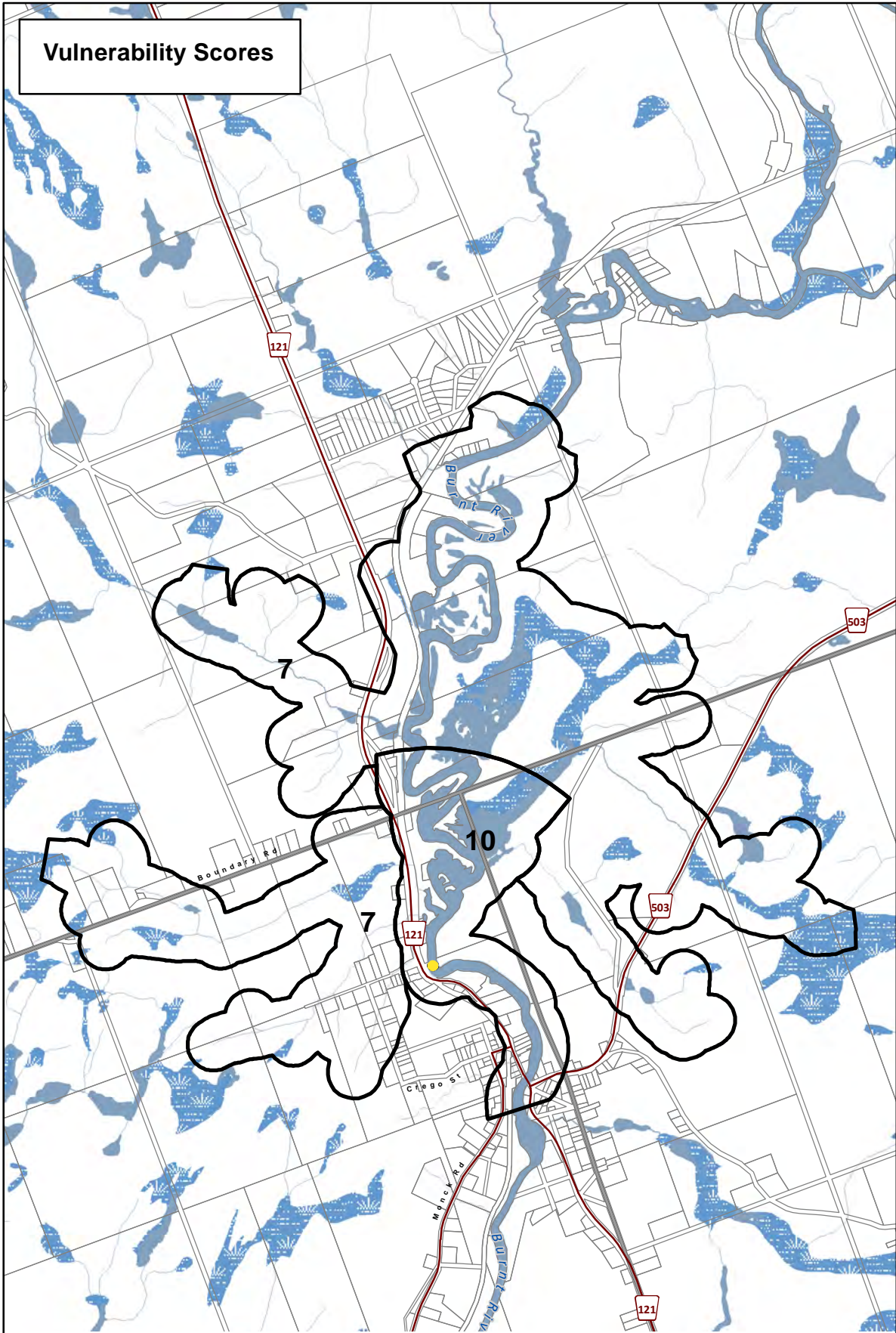


**Intake Protection Zones**

- IPZ - 1
- IPZ - 2



**Vulnerability Scores**



To determine significant, moderate and low drinking water threats, first refer to the Intake Protection Zone Map and the Vulnerability Scores Map and then go to the following link to look up threat information. <https://threats.swpip.ca/ZoneScore>

Threats information can also be found in the Technical Rules document found on the bottom of this webpage: <https://trentsourceprotection.on.ca/resources/reports-legislation>



# Kinmount Municipal Surface Water System

## Kawartha - Haliburton Source Protection Area

### Intake Protection Zones & Vulnerability Scores (IPZ 1 & 2)

**Legend**

- Surface Water Intake
- Railway
- Watercourse
- Main Road
- Highway
- Multi Lane Highway
- Property Boundary
- Source Protection Region
- Source Protection Area
- Lower and Single Tier Municipality
- Upper Tier Municipality
- Waterbody
- Wetland

0 0.375 0.75 1.5  
Kilometres

**Trent Conservation Coalition Source Protection Region**

[www.trentsourceprotection.on.ca](http://www.trentsourceprotection.on.ca)

This map has been prepared for the purpose of meeting the provincial requirements under the Clean Water Act, 2006. If it is proposed to use it for another purpose, it would be advisable to first consult with the responsible conservation authority.

PRODUCED BY Lower Trent Conservation on behalf of the Trent Conservation Coalition Source Protection Committee, March 2011.  
(Updated Jan 2025), with data supplied under licence by members of the Ontario Geospatial Data Exchange.

Waterbodies and watercourses located within the extent of an intake protection zone are included in that zone.

Ontario  
Made possible through the support of the Government of Ontario





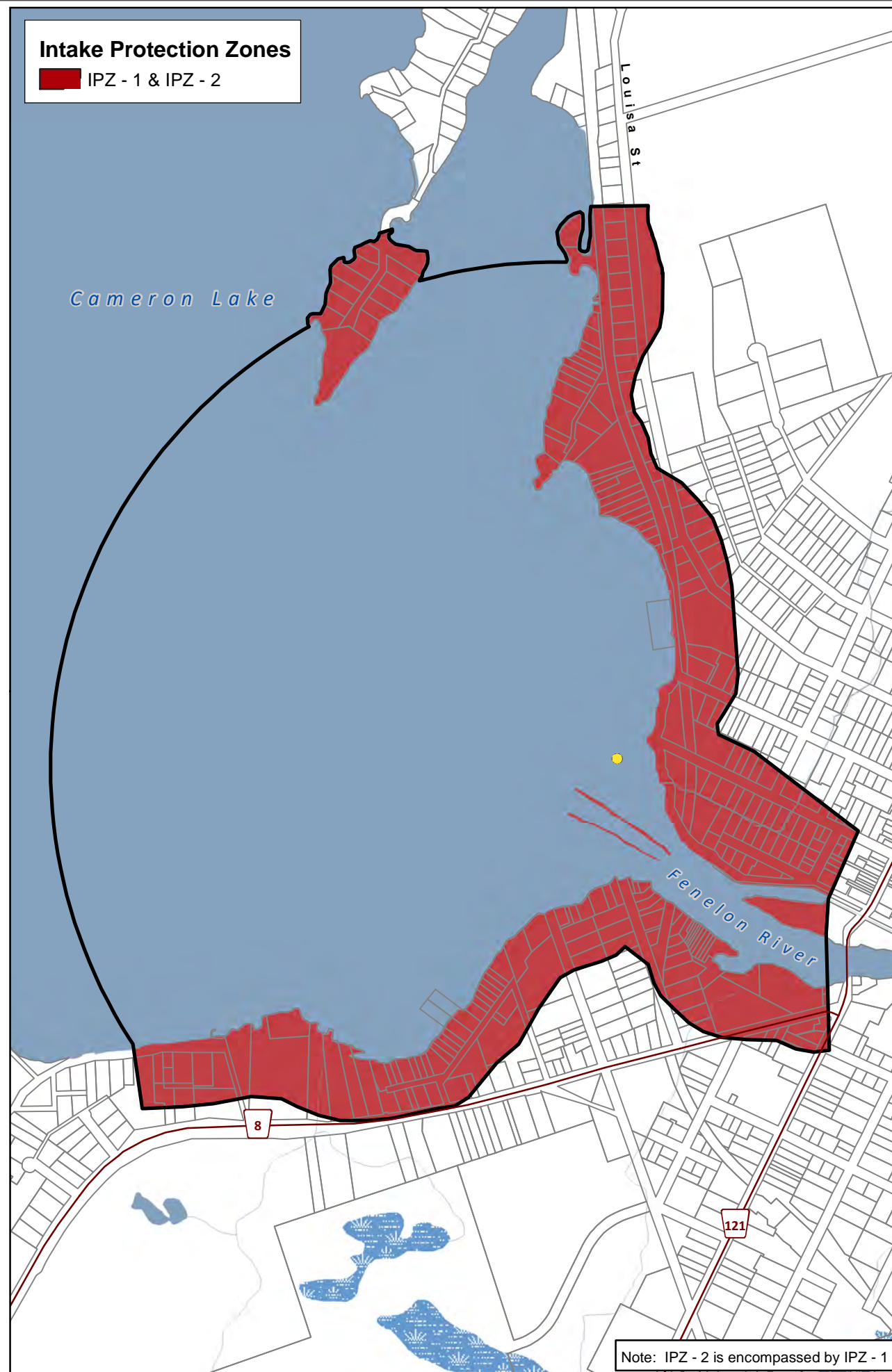
To determine significant, moderate and low drinking water threats, refer to the Intake Protection Zone Map and find the vulnerability score in the legend. Then, go to the following link to look up threat information. <https://threats.swpip.ca/ZoneScore>

Threats information can also be found in the Technical Rules document found on the bottom of this webpage: <https://trentsourceprotection.on.ca/resources/reports-legislation>



### Intake Protection Zones

IPZ - 1 & IPZ - 2



### Vulnerability Score



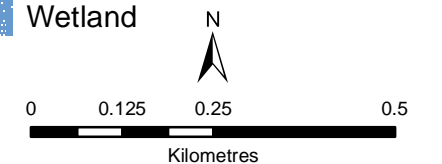
## Fenelon Falls Municipal Surface Water System

### Kawartha - Haliburton Source Protection Area

### Intake Protection Zones & Vulnerability Scores (IPZ 1 & 2)

#### Legend

- Surface Water Intake
- +— Railway
- Watercourse
- Main Road
- Highway
- Multi Lane Highway
- Property Boundary
- Source Protection Region
- Source Protection Area
- Lower and Single Tier Municipality
- Upper Tier Municipality
- Waterbody
- Wetland



### Trent Conservation Coalition Source Protection Region

[www.trentsourceprotection.on.ca](http://www.trentsourceprotection.on.ca)

This map has been prepared for the purpose of meeting the provincial requirements under the Clean Water Act, 2006. If it is proposed to use it for another purpose, it would be advisable to first consult with the responsible conservation authority.

PRODUCED BY Lower Trent Conservation on behalf of the Trent Conservation Coalition Source Protection Committee, March 2011.  
(Updated Jan 2025), with data supplied under licence by members of the Ontario Geospatial Data Exchange.

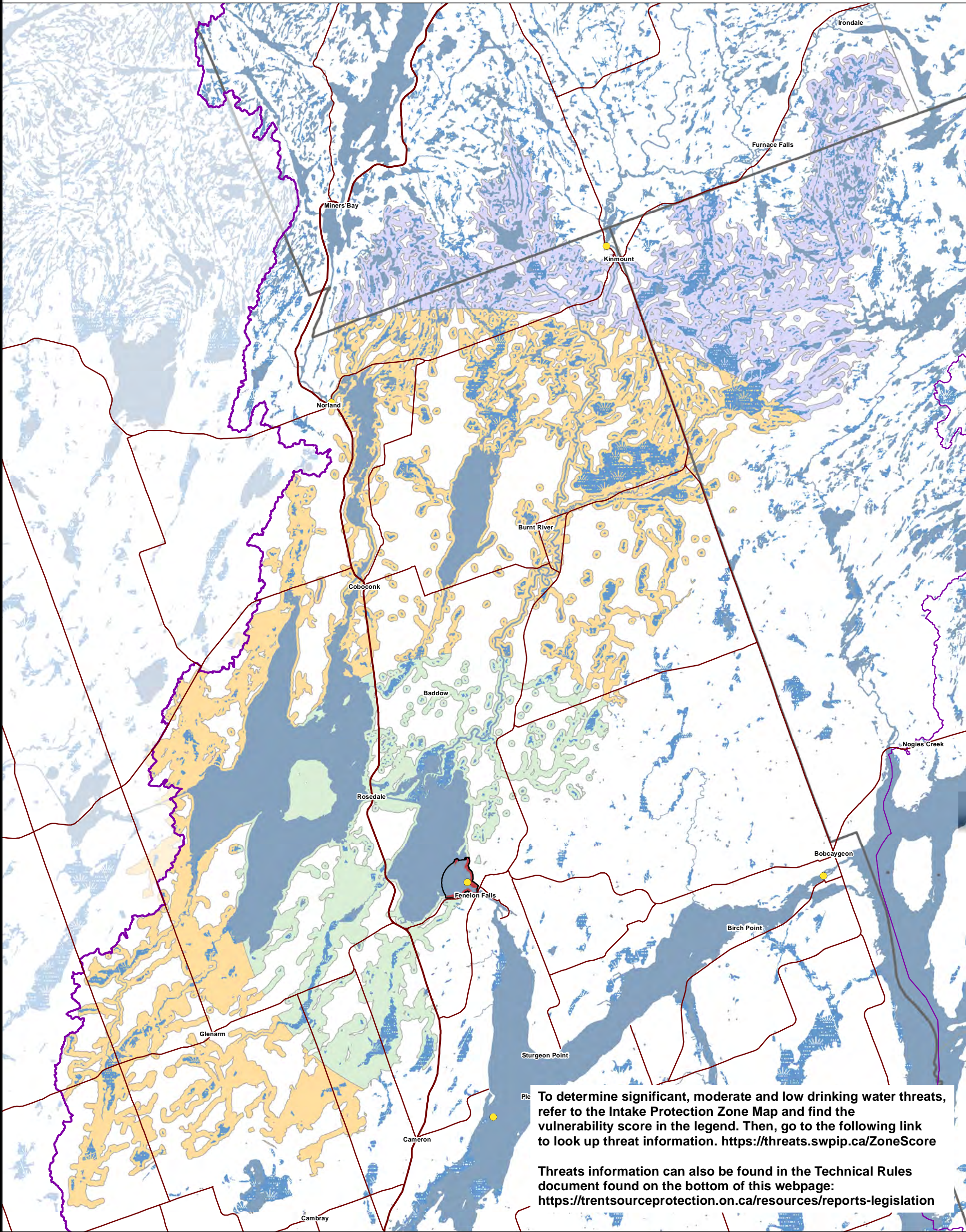
Waterbodies and watercourses located within the extent of an intake protection zone are included in that zone.



To determine significant, moderate and low drinking water threats, first refer to the Intake Protection Zone Map and the Vulnerability Scores Map and then go to the following link to look up threat information. <https://threats.swpip.ca/ZoneScore>

Threats information can also be found in the Technical Rules document found on the bottom of this webpage: <https://trentsourceprotection.on.ca/resources/reports-legislation>

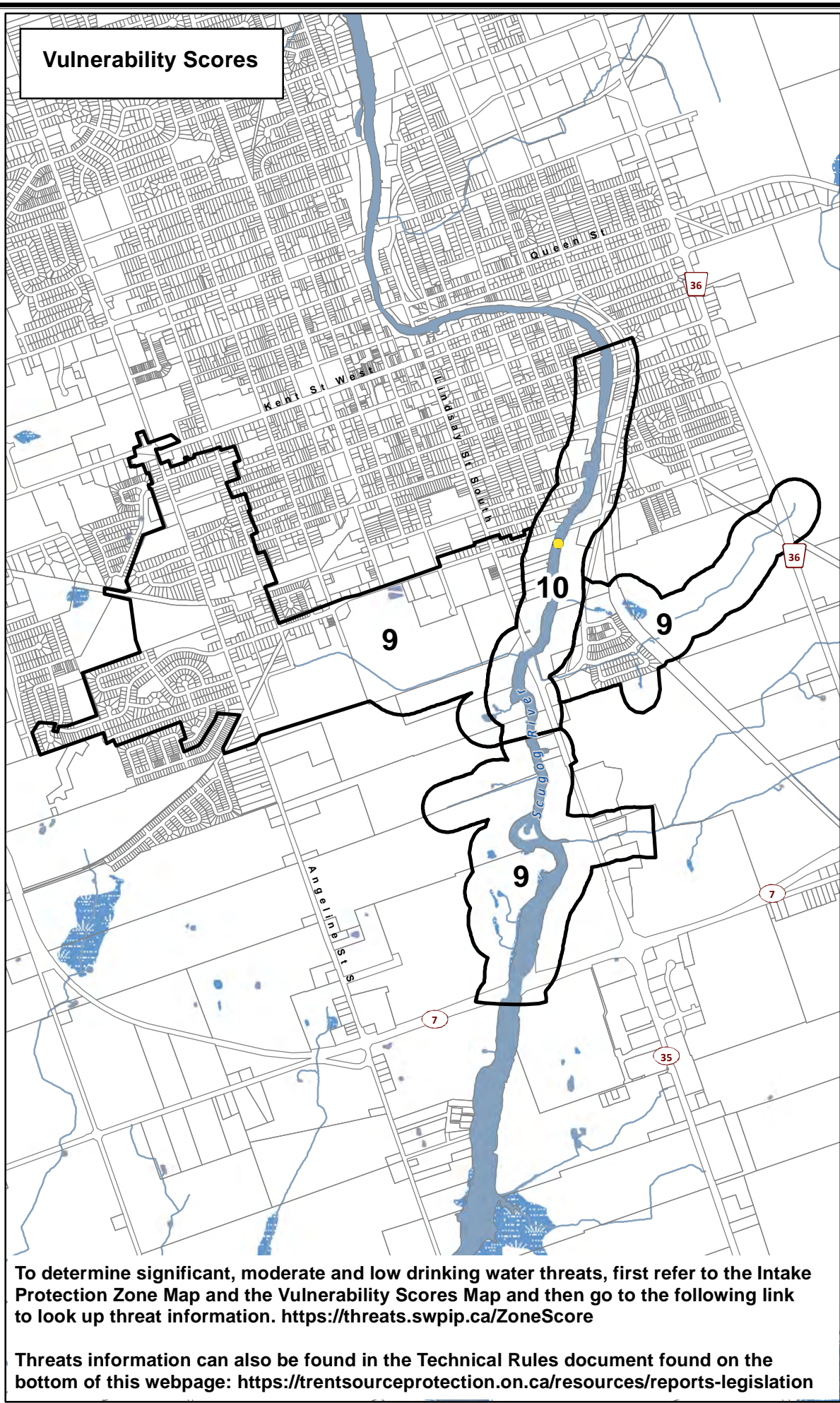
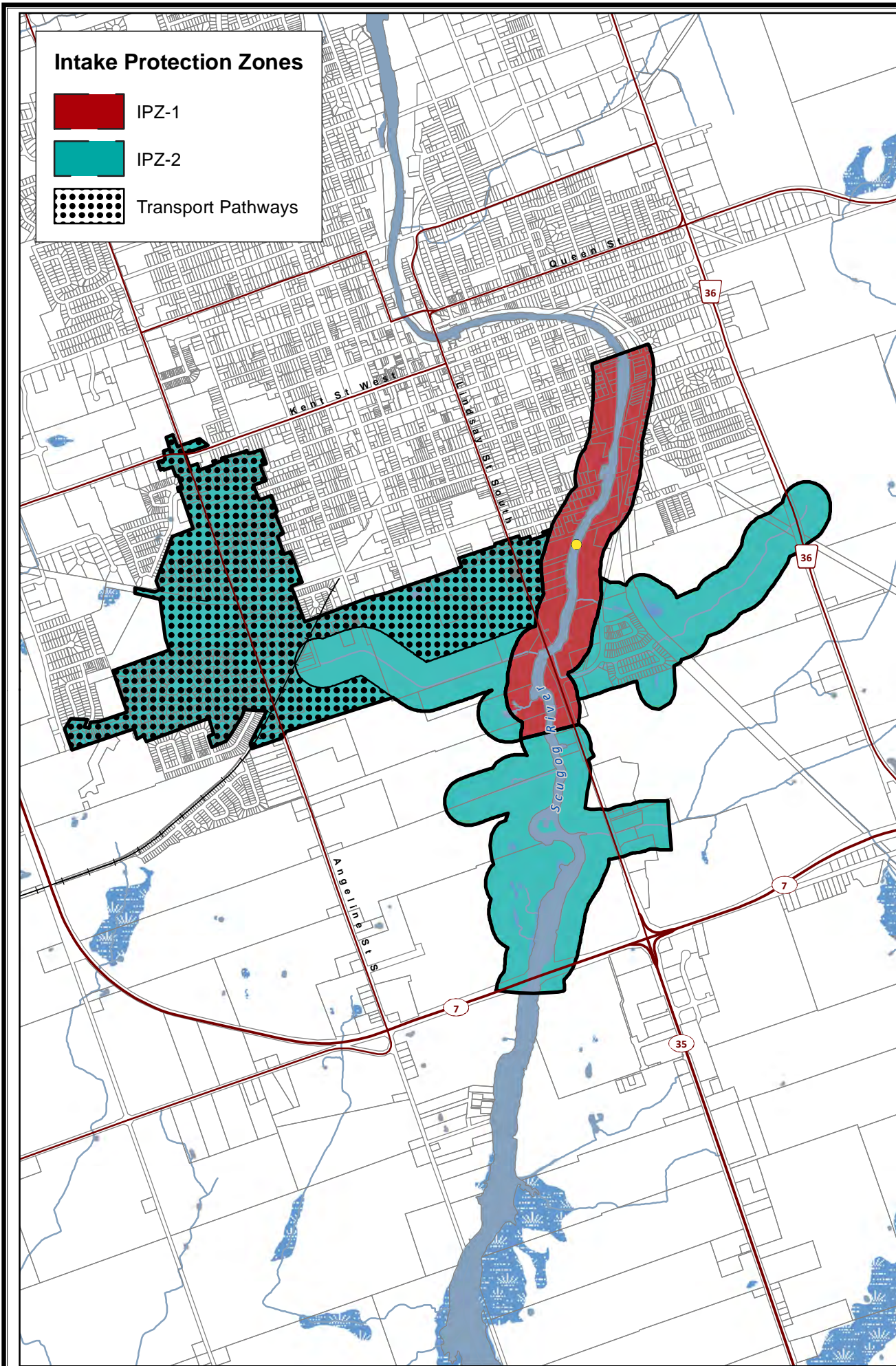




To determine significant, moderate and low drinking water threats, refer to the Intake Protection Zone Map and find the vulnerability score in the legend. Then, go to the following link to look up threat information. <https://threats.swpip.ca/ZoneScore>

Threats information can also be found in the Technical Rules document found on the bottom of this webpage: <https://trentsourceprotection.on.ca/resources/reports-legislation>





**DRINKING WATER**  
**SOURCE PROTECTION**  
ACT FOR CLEAN WATER

**Lindsay  
Municipal Surface  
Water System**

**Kawartha - Haliburton  
Source Protection Area**

**Intake Protection Zones &  
Vulnerability Scores  
(IPZ 1 & 2)**

**Legend**

- Surface Water Intake
- Railway
- Watercourse
- Main Road
- Highway
- Multi Lane Highway
- Property Boundary
- Source Protection Region
- Source Protection Area
- Lower and Single Tier Municipality
- Upper Tier Municipality
- Waterbody
- Wetland

0 0.5 1 2  
Kilometres

**Trent Conservation Coalition  
Source Protection Region**

[www.trentsourceprotection.on.ca](http://www.trentsourceprotection.on.ca)

This map has been prepared for the purpose of meeting the provincial requirements under the Clean Water Act, 2006. If it is proposed to use it for another purpose, it would be advisable to first consult with the responsible conservation authority.

PRODUCED BY Lower Trent Conservation on behalf of the Trent Conservation Coalition Source Protection Committee, March 2011  
(Updated Jan 2025), with data supplied under licence by members of the Ontario Geospatial Data Exchange.

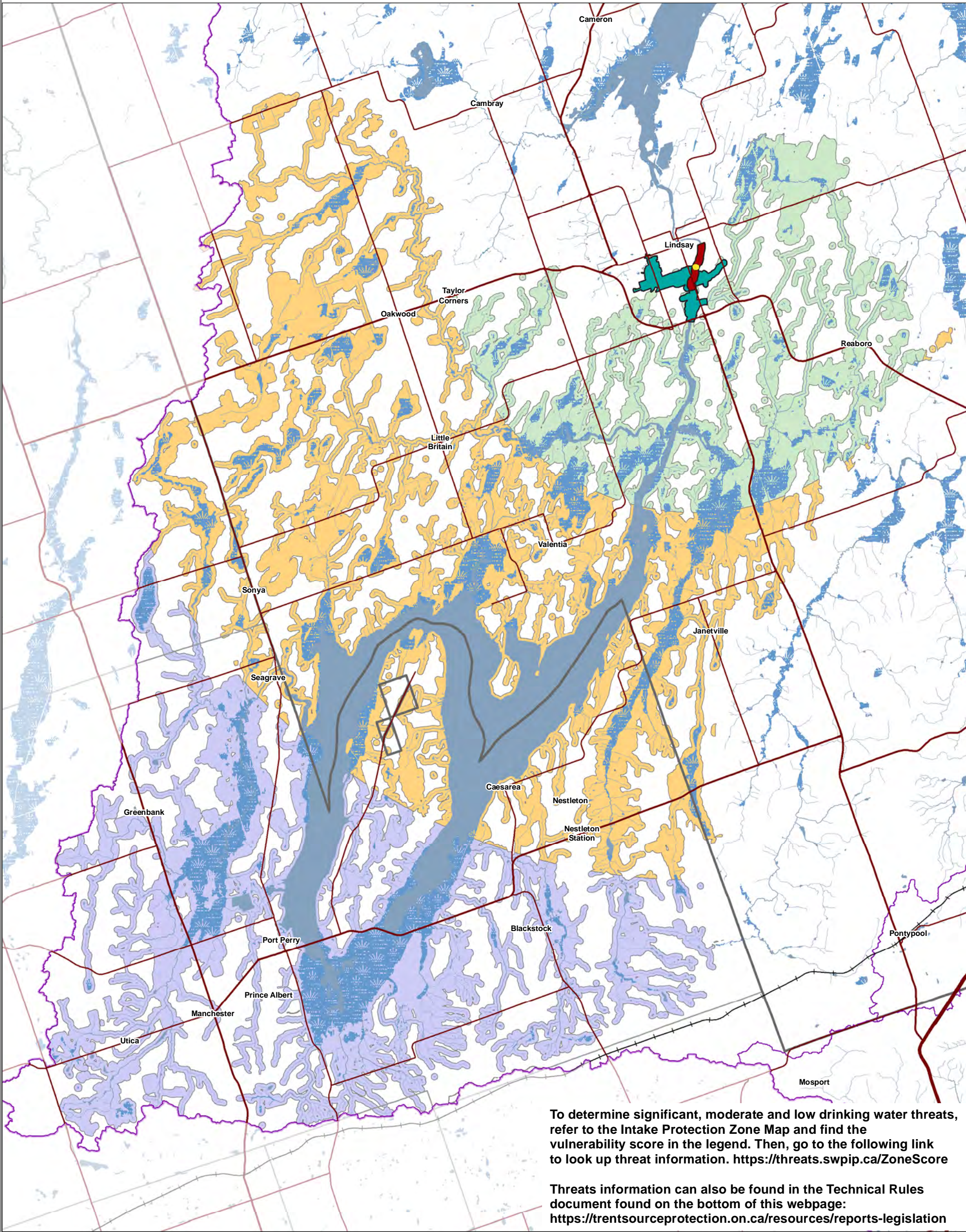
Waterbodies and watercourses located within the extent of an intake protection zone are included in that zone.

**Ontario**  
Made possible through the support  
of the Government of Ontario

To determine significant, moderate and low drinking water threats, first refer to the Intake Protection Zone Map and the Vulnerability Scores Map and then go to the following link to look up threat information. <https://threats.swpip.ca/ZoneScore>

Threats information can also be found in the Technical Rules document found on the bottom of this webpage: <https://trentsourceprotection.on.ca/resources/reports-legislation>





This map has been prepared for the purpose of meeting the provincial requirements under the Clean Water Act, 2006. If it is proposed to use it for another purpose, it would be advisable to first consult with the responsible conservation authority.

PRODUCED BY Lower Trent Conservation on behalf of the Trent Conservation Coalition Source Protection Committee, March 2011 (Updated Jan 2025), with data supplied under licence by members of the Ontario Geospatial Data Exchange.

Waterbodies and watercourses located within the extent of an intake protection zone are included in that zone.

Ontario  
Made possible through the support of the Government of Ontario

● Surface Water Intake

— Railway

— Watercourse

— Main Road

— Highway

— Multi Lane Highway

— Source Protection Region

— Source Protection Areas

— Upper Tier Municipality

— Lower and Single Tier Municipality

— Waterbody

— Wetland

Intake Protection Zones

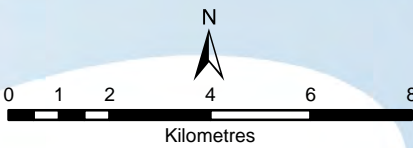
■ IPZ-1

■ IPZ-2

■ IPZ-3a (Vulnerability Score = 6)

■ IPZ-3b (Vulnerability Score = 2)

■ IPZ-3c (Vulnerability Score = 2)

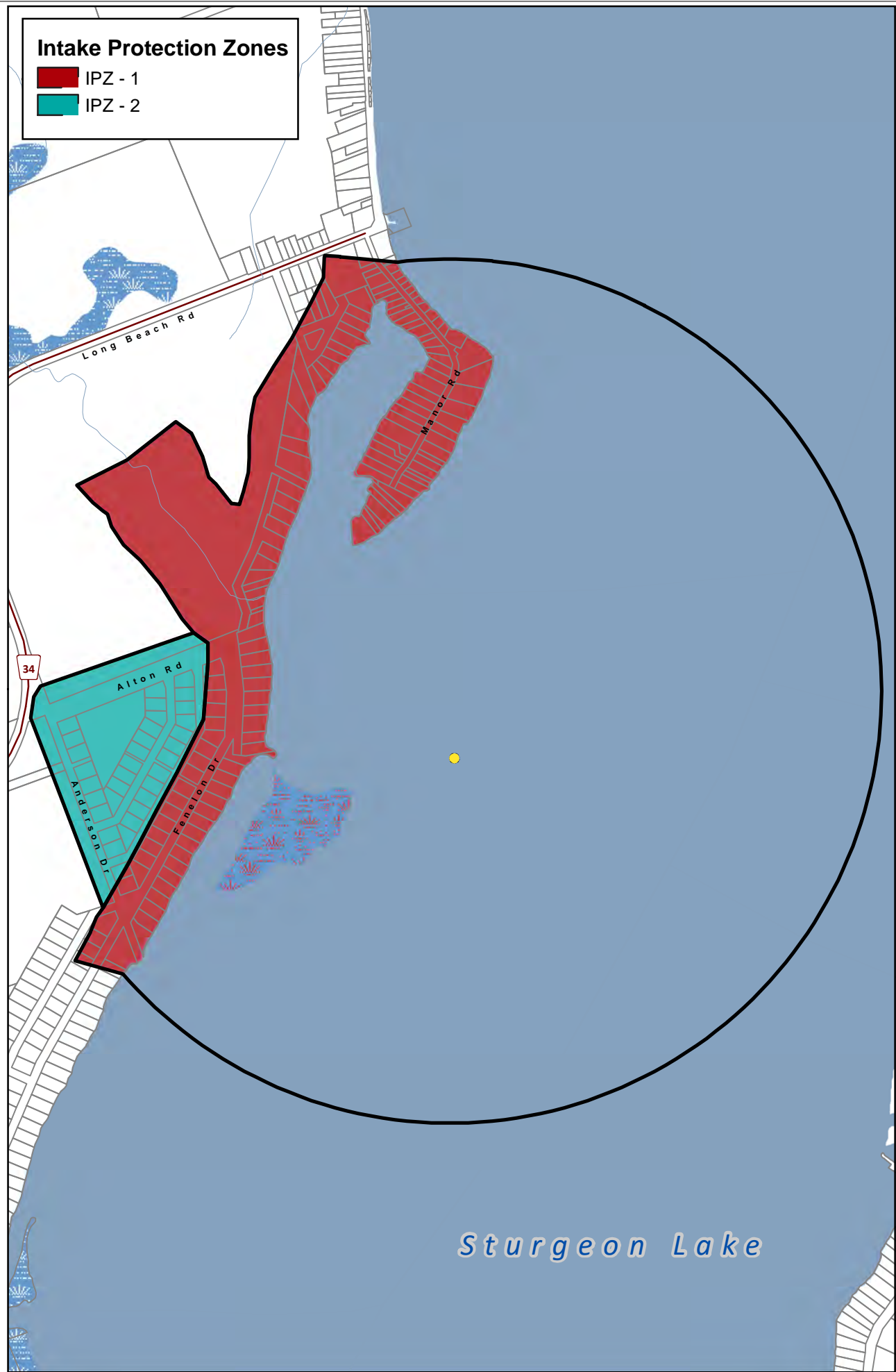




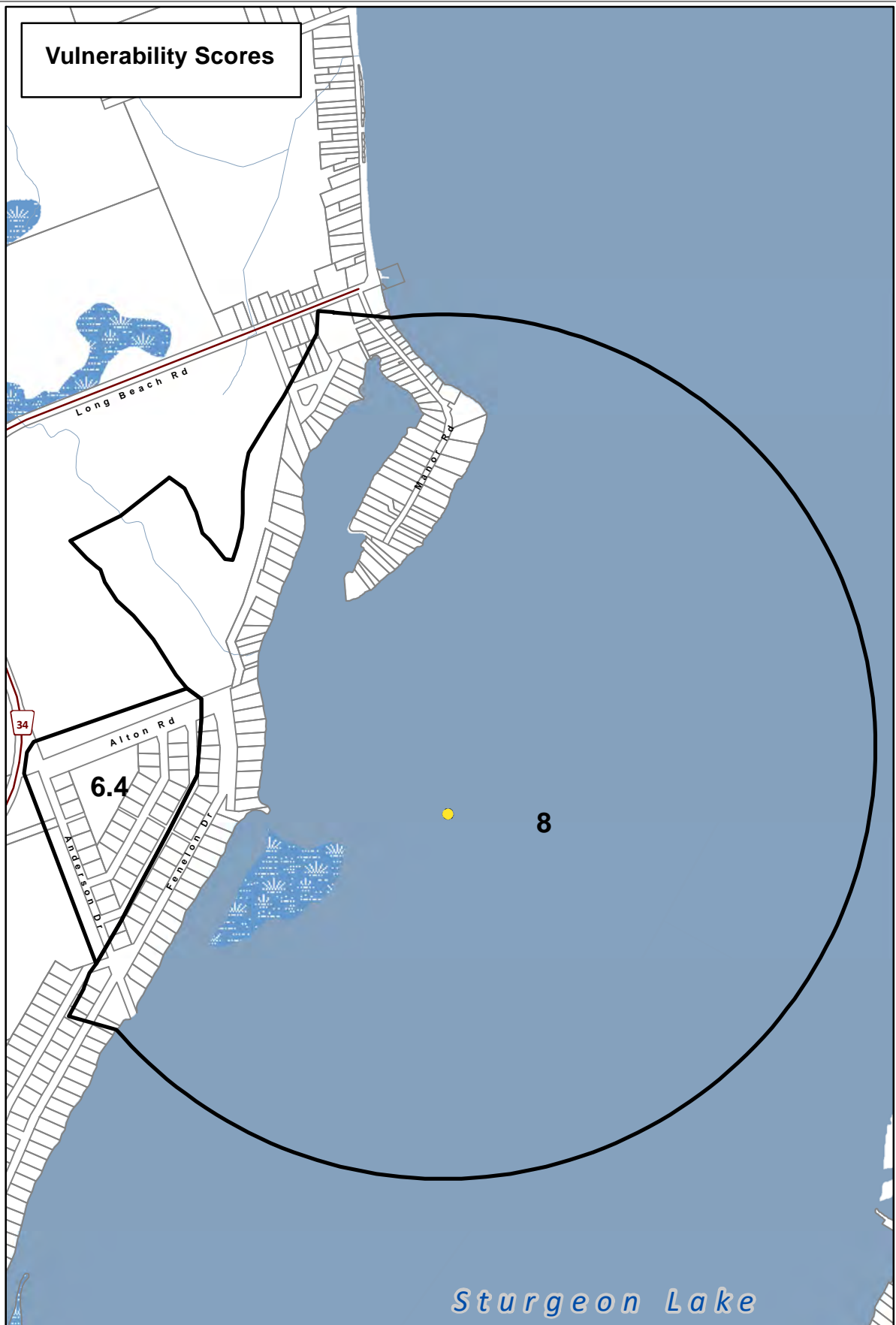
**Intake Protection Zones**

IPZ - 1

IPZ - 2



**Vulnerability Scores**



To determine significant, moderate and low drinking water threats, first refer to the Intake Protection Zone Map and the Vulnerability Scores Map and then go to the following link to look up threat information. <https://threats.swpip.ca/ZoneScore>

Threats information can also be found in the Technical Rules document found on the bottom of this webpage: <https://trentsourceprotection.on.ca/resources/reports-legislation>

**Southview Estates  
Municipal Surface  
Water System**

**Kawartha - Haliburton  
Source Protection Area**

**Intake Protection Zones &  
Vulnerability Scores  
(IPZ 1 & 2)**

**Legend**

- Surface Water Intake
- Railway
- Watercourse
- Main Road
- Highway
- Multi Lane Highway
- Property Boundary
- Source Protection Region
- Source Protection Area
- Lower and Single Tier Municipality
- Upper Tier Municipality
- Waterbody
- Wetland

0 187.5 375 750  
Meters

**Trent Conservation Coalition  
Source Protection Region**

[www.trentsourceprotection.on.ca](http://www.trentsourceprotection.on.ca)

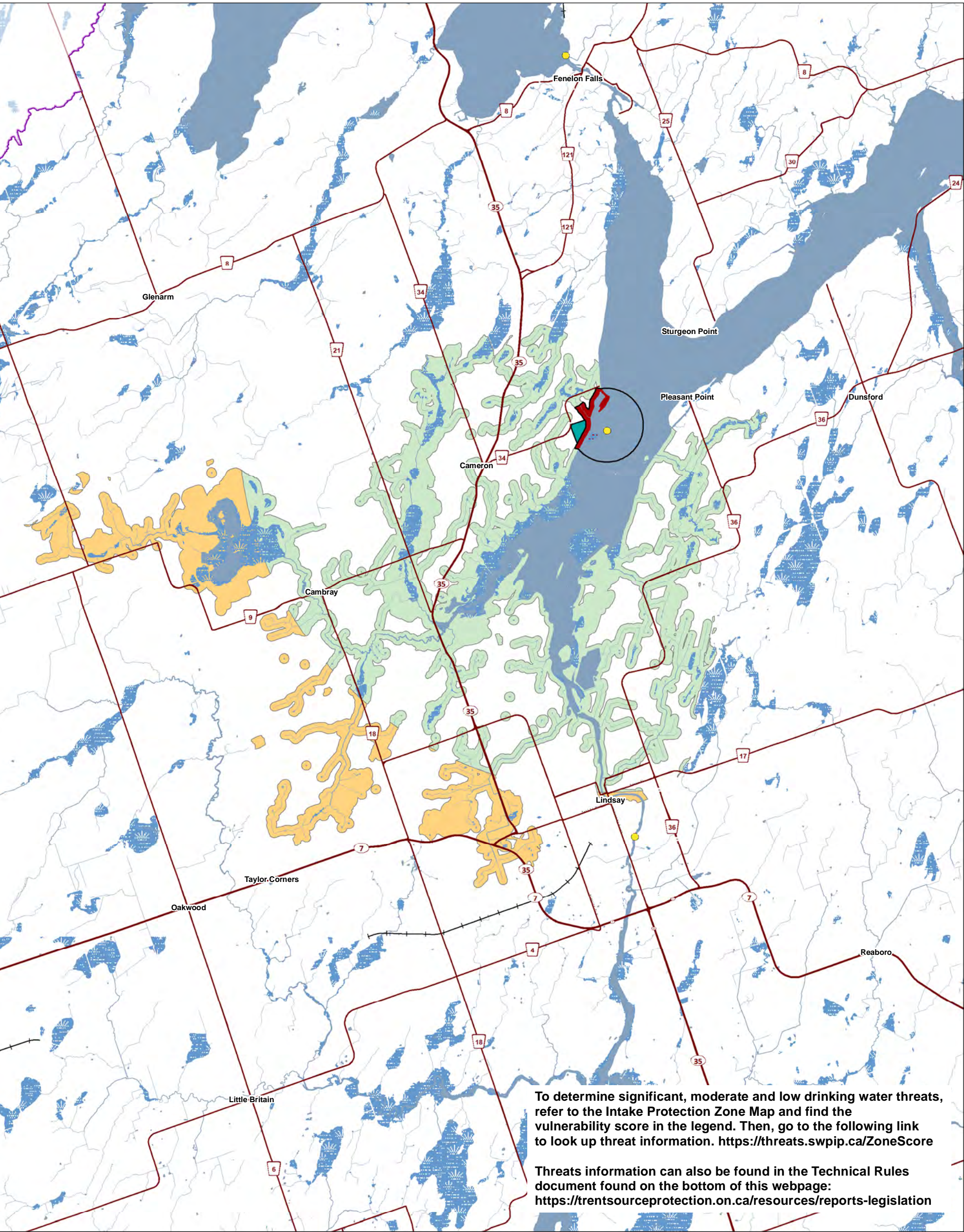
This map has been prepared for the purpose of meeting the provincial requirements under the Clean Water Act, 2006. If it is proposed to use it for another purpose, it would be advisable to first consult with the responsible conservation authority.

PRODUCED BY Lower Trent Conservation on behalf of the Trent Conservation Coalition Source Protection Committee, March 2011.  
(Updated Jan2025), with data supplied under licence by members of the Ontario Geospatial Data Exchange.

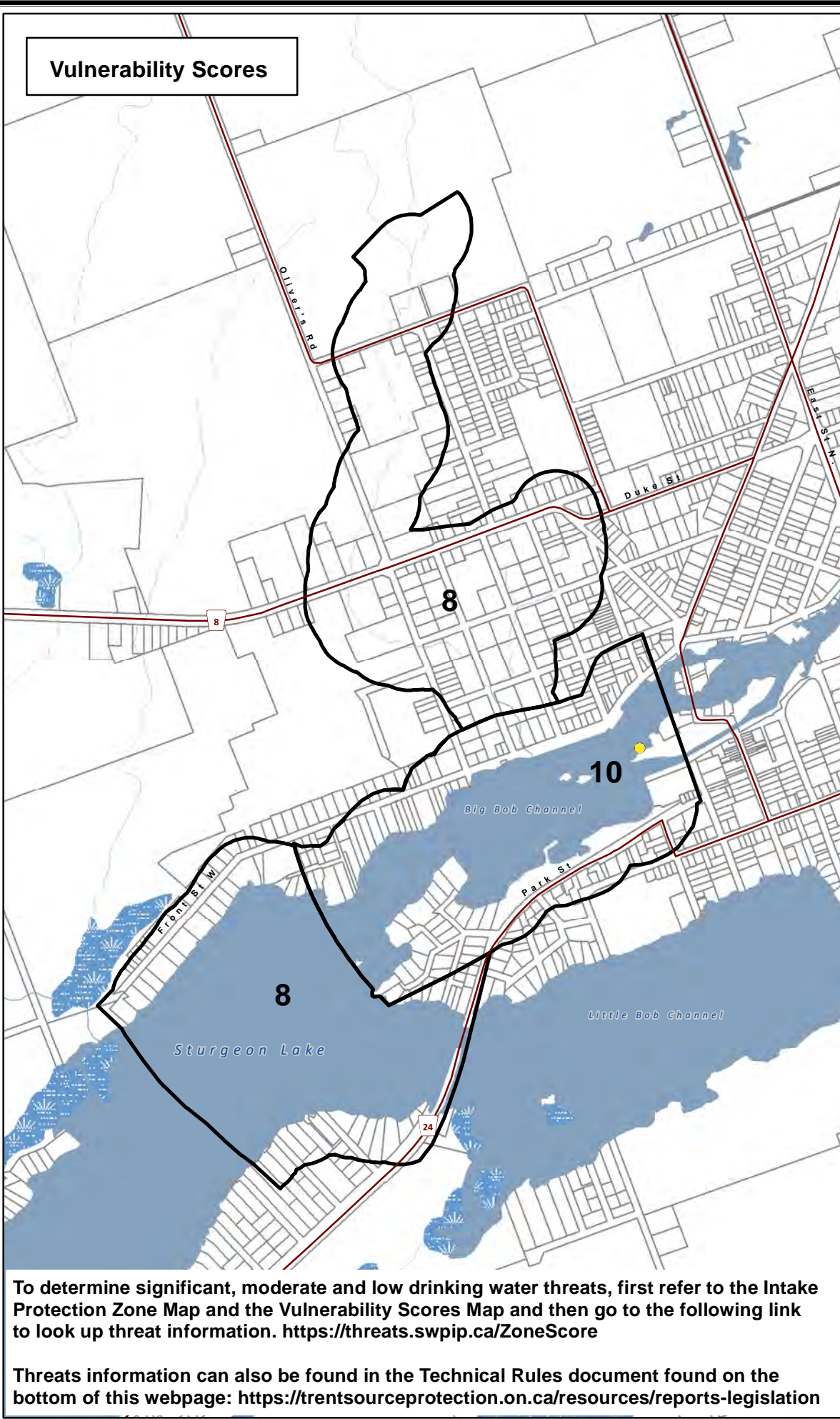
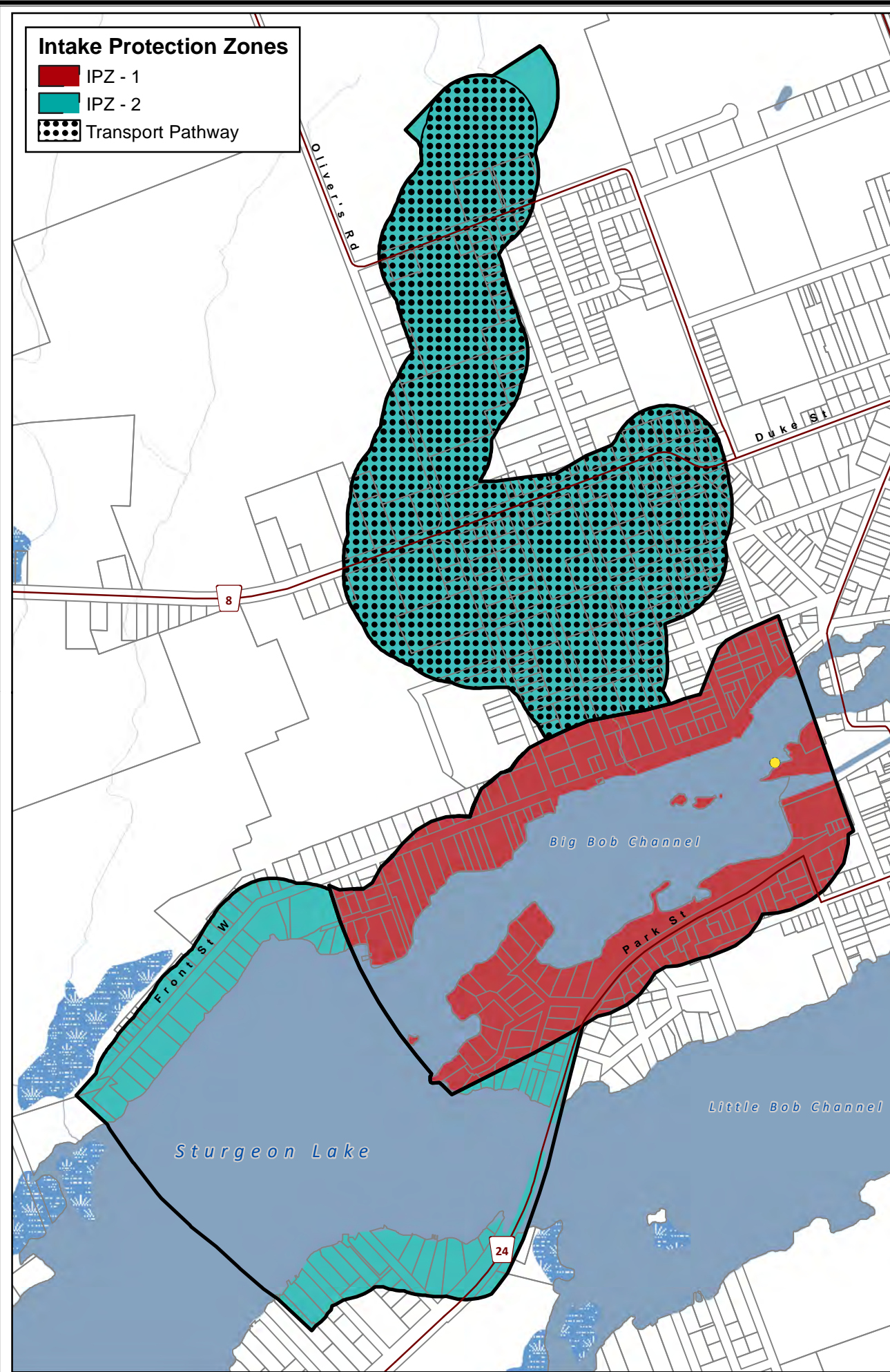
Waterbodies and watercourses located within the extent of an intake protection zone are included in that zone.

Ontario  
Made possible through the support of the Government of Ontario









## Bobcaygeon Municipal Surface Water System

### Kawartha - Haliburton Source Protection Area

#### Intake Protection Zones & Vulnerability Scores (IPZ 1 & 2)

#### Legend

- Surface Water Intake
- Railway
- Watercourse
- Main Road
- Highway
- Multi Lane Highway
- Property Boundary
- Source Protection Region
- Source Protection Area
- Upper Tier Municipality
- Lower and Single Tier Municipality
- Waterbody
- Wetland

0 125 250 500

Meters

Scale referenced to the map on the left

**Trent Conservation Coalition Source Protection Region**

[www.trentsourceprotection.on.ca](http://www.trentsourceprotection.on.ca)

This map has been prepared for the purpose of meeting the provincial requirements under the Clean Water Act, 2006. If it is proposed to use it for another purpose, it would be advisable to first consult with the responsible conservation authority.

PRODUCED BY Lower Trent Conservation on behalf of the Trent Conservation Coalition Source Protection Committee, March 2011 (Updated Jan 2025), with data supplied under licence by members of the Ontario Geospatial Data Exchange.

Waterbodies and watercourses located within the extent of an intake protection zone are included in that zone.

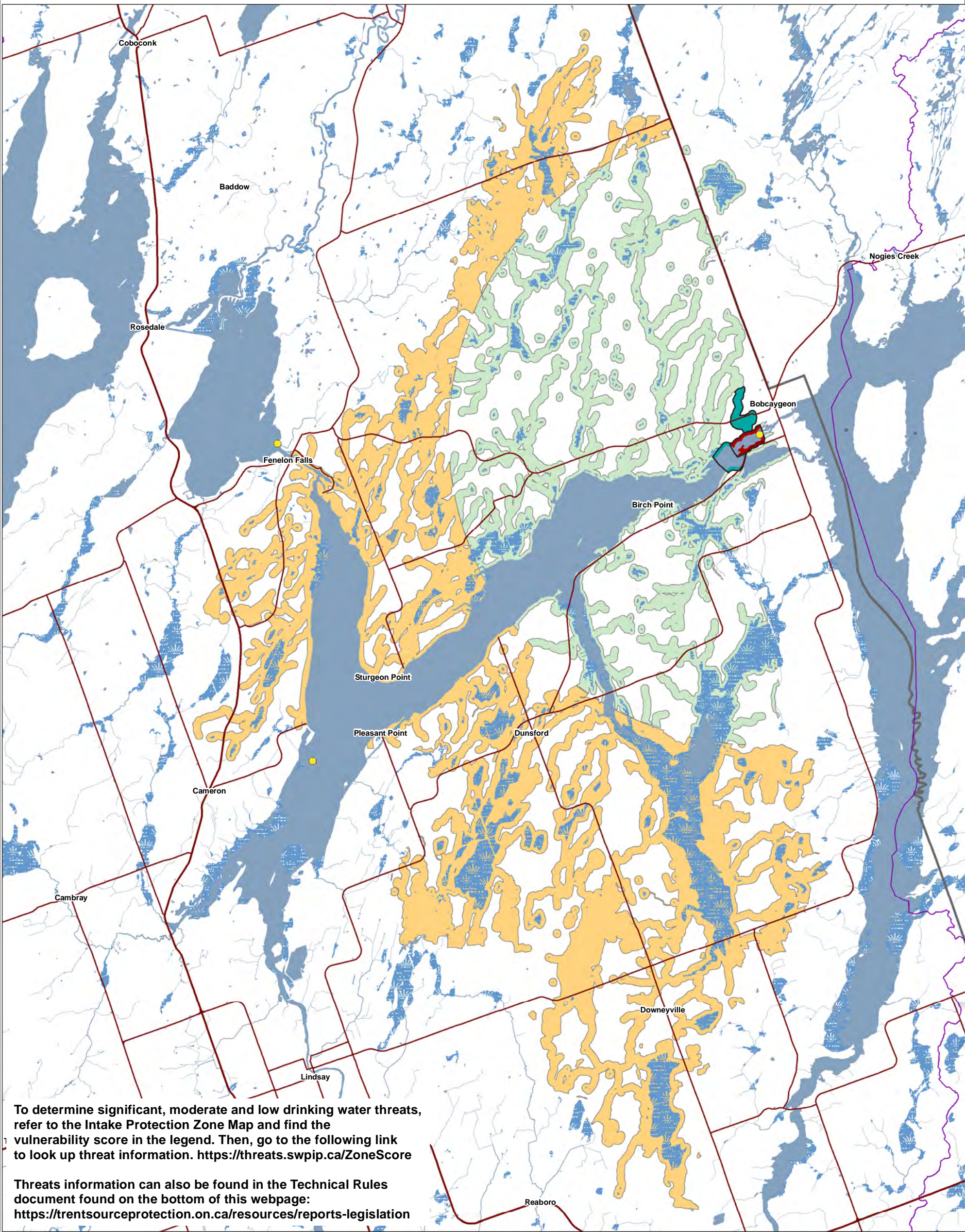
Ontario

Made possible through the support of the Government of Ontario

To determine significant, moderate and low drinking water threats, first refer to the Intake Protection Zone Map and the Vulnerability Scores Map and then go to the following link to look up threat information. <https://threats.swpip.ca/ZoneScore>

Threats information can also be found in the Technical Rules document found on the bottom of this webpage: <https://trentsourceprotection.on.ca/resources/reports-legislation>





To determine significant, moderate and low drinking water threats, refer to the Intake Protection Zone Map and find the vulnerability score in the legend. Then, go to the following link to look up threat information. <https://threats.swpip.ca/ZoneScore>

Threats information can also be found in the Technical Rules document found on the bottom of this webpage: <https://trentsourceprotection.on.ca/resources/reports-legislation>

This map has been prepared for the purpose of meeting the provincial requirements under the Clean Water Act, 2006. If it is proposed to use it for another purpose, it would be advisable to first consult with the responsible conservation authority.

PRODUCED BY Lower Trent Conservation on behalf of the Trent Conservation Coalition Source Protection Committee, March 2011.  
(Updated Jan 2025), with data supplied under licence by members of the Ontario Geospatial Data Exchange.

Waterbodies and watercourses located within the extent of an intake protection zone are included in that zone.

Ontario  
Made possible through the support of the Government of Ontario

Legend

Railway

Main Road

Highway

Multi Lane Highway

Watercourse

Source Protection Region

Source Protection Areas

Upper Tier Municipality

Lower and Single Tier Municipality

Waterbody

Wetland

Intake Protection Zones

IPZ - 1

IPZ - 2

IPZ - 3 a (Vulnerability Score = 5)

IPZ - 3 b (Vulnerability Score = 3)

0

1

2

4

6

8

Kilometres

N

Trent Conservation Coalition

Source Protection Region

[www.trentsourceprotection.on.ca](http://www.trentsourceprotection.on.ca)