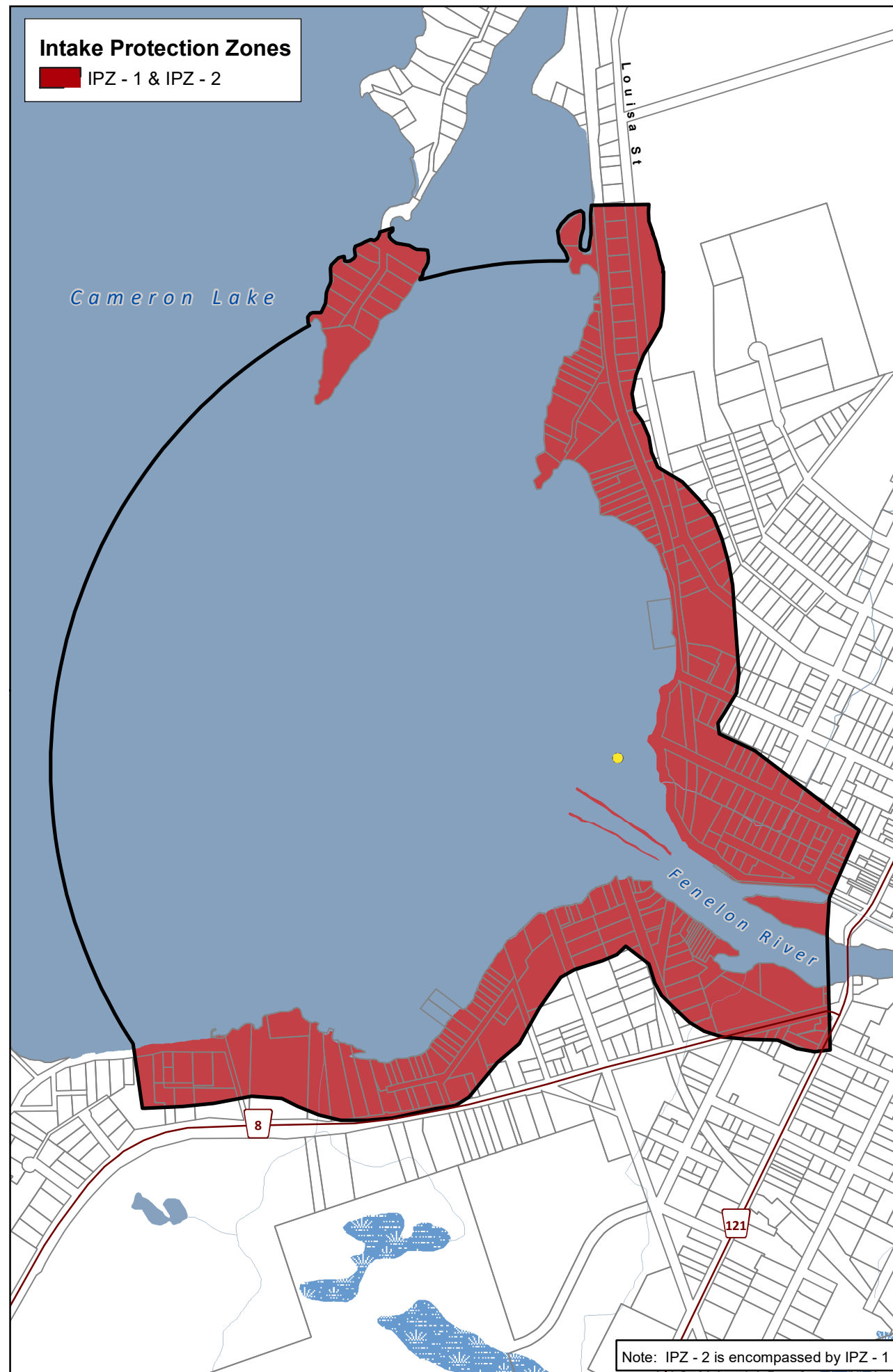
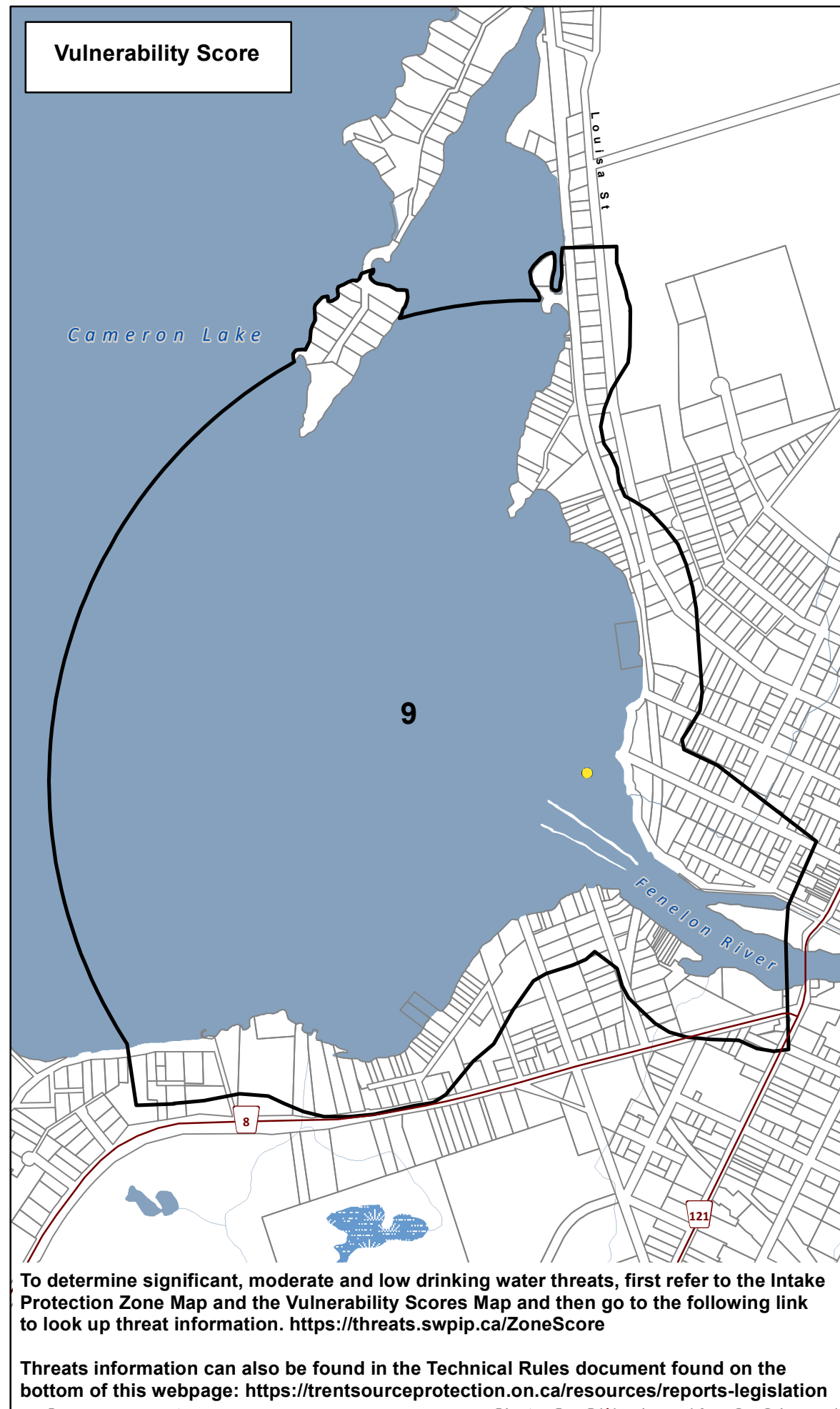


Intake Protection Zones

IPZ - 1 & IPZ - 2



Vulnerability Score



To determine significant, moderate and low drinking water threats, first refer to the Intake Protection Zone Map and the Vulnerability Scores Map and then go to the following link to look up threat information. <https://threats.swpip.ca/ZoneScore>

Threats information can also be found in the Technical Rules document found on the bottom of this webpage: <https://trentsourceprotection.on.ca/resources/reports-legislation>



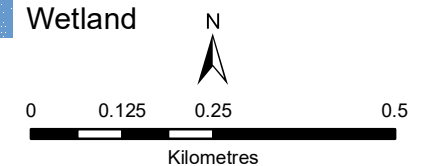
Fenelon Falls Municipal Surface Water System

Kawartha - Haliburton Source Protection Area

Intake Protection Zones & Vulnerability Scores (IPZ 1 & 2)

Legend

- Surface Water Intake
- Railway
- Watercourse
- Main Road
- Highway
- Multi Lane Highway
- Property Boundary
- Source Protection Region
- Source Protection Area
- Lower and Single Tier Municipality
- Upper Tier Municipality
- Waterbody
- Wetland



Trent Conservation Coalition Source Protection Region

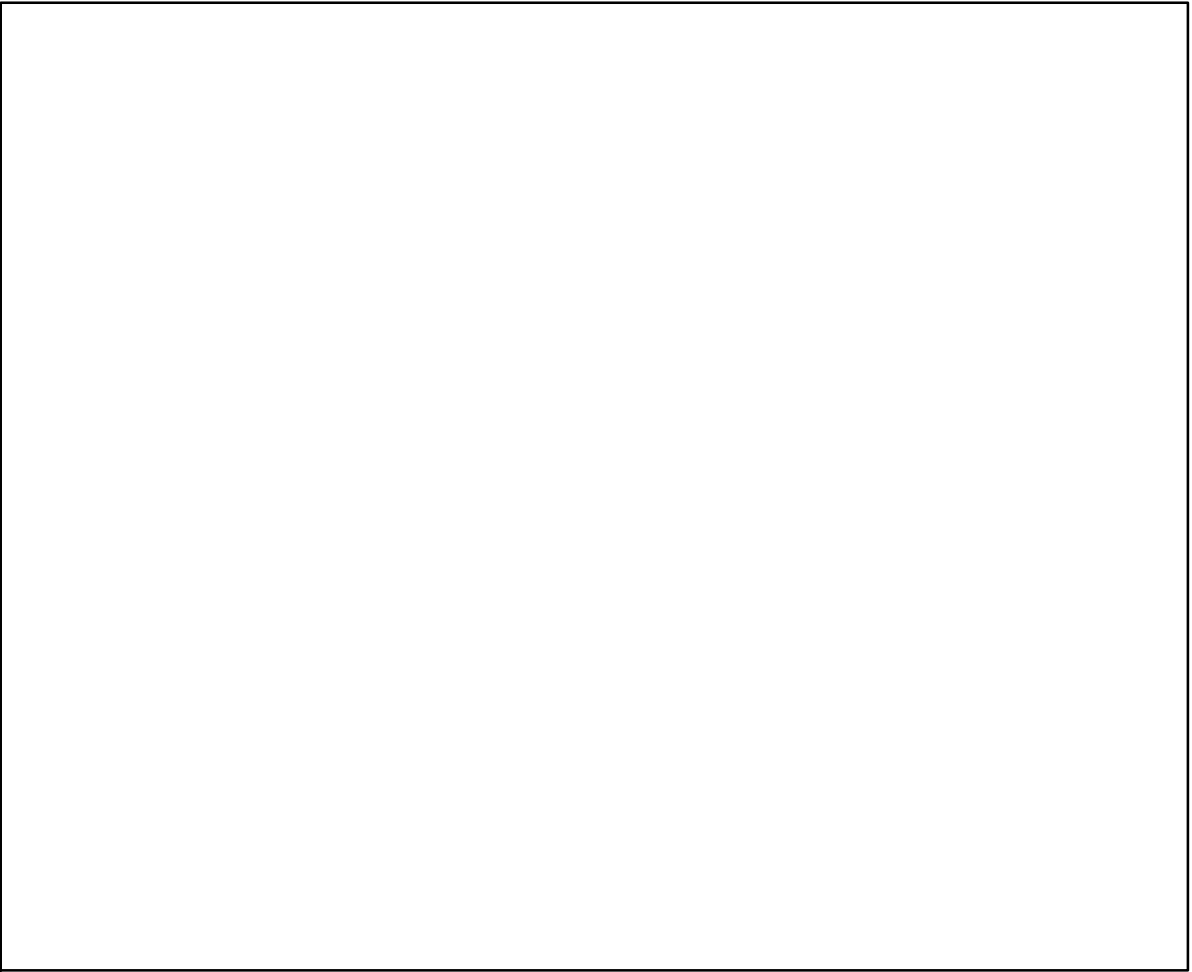
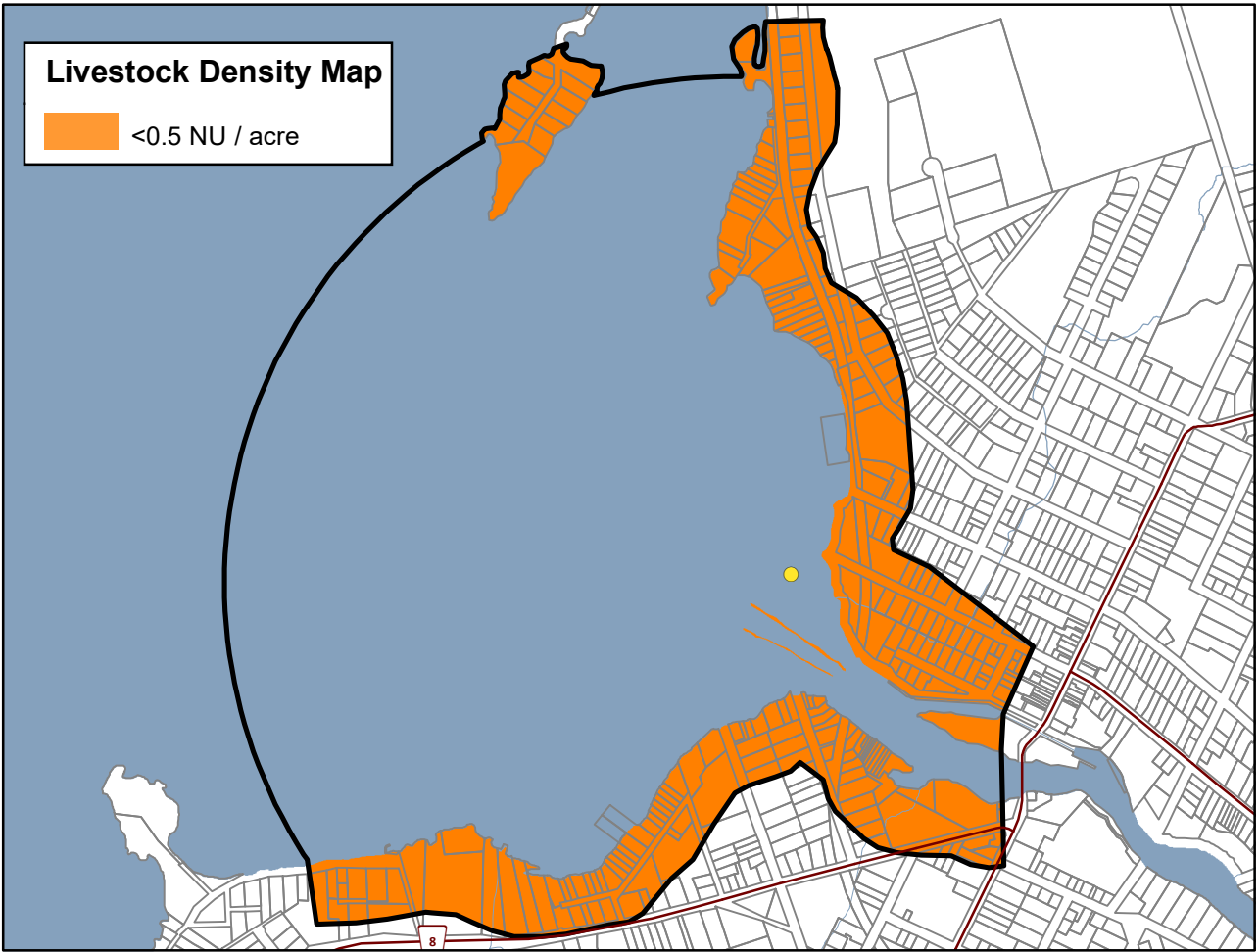
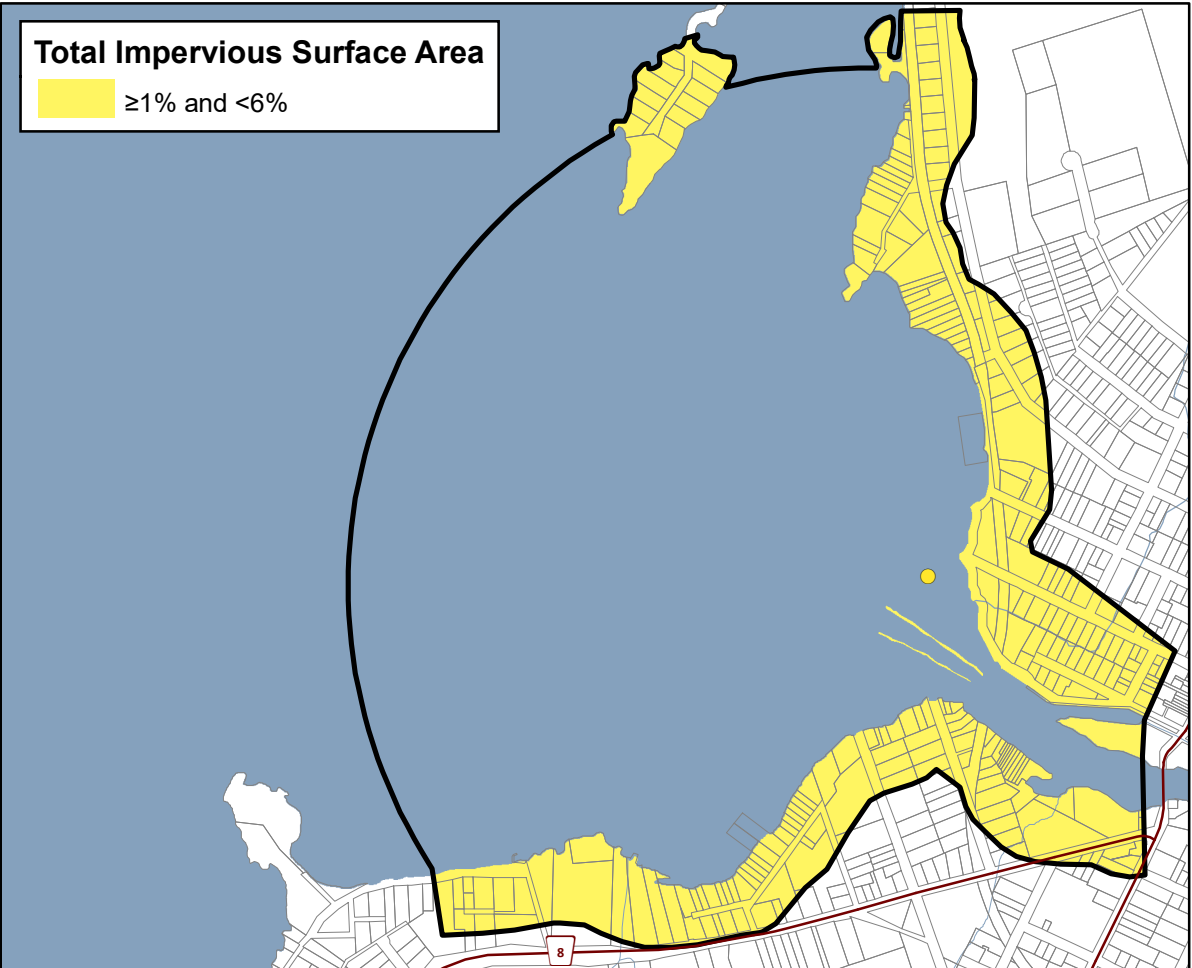
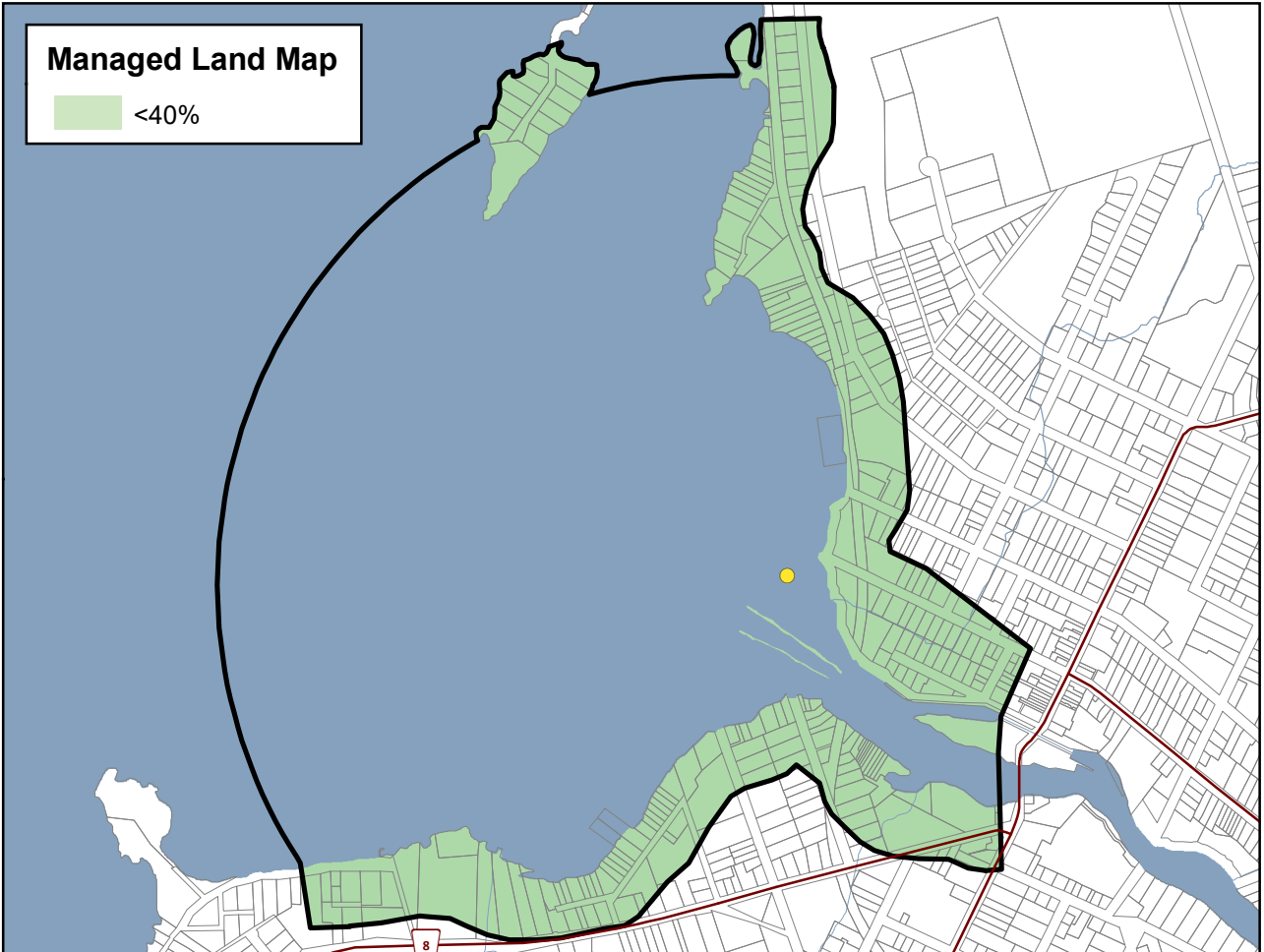
www.trentsourceprotection.on.ca

This map has been prepared for the purpose of meeting the provincial requirements under the Clean Water Act, 2006. If it is proposed to use it for another purpose, it would be advisable to first consult with the responsible conservation authority.

PRODUCED BY Lower Trent Conservation on behalf of the Trent Conservation Coalition Source Protection Committee, March 2011.
(Updated Jan 2025), with data supplied under licence by members of the Ontario Geospatial Data Exchange.

Waterbodies and watercourses located within the extent of an intake protection zone are included in that zone.



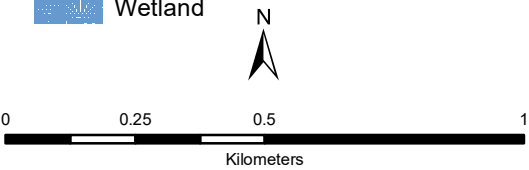


**Fenelon Falls
Municipal Surface
Water System**
**Kawartha - Haliburton Source
Protection Area**

**Managed Land, Livestock
Density & Total
Impervious Surface Area**

Legend

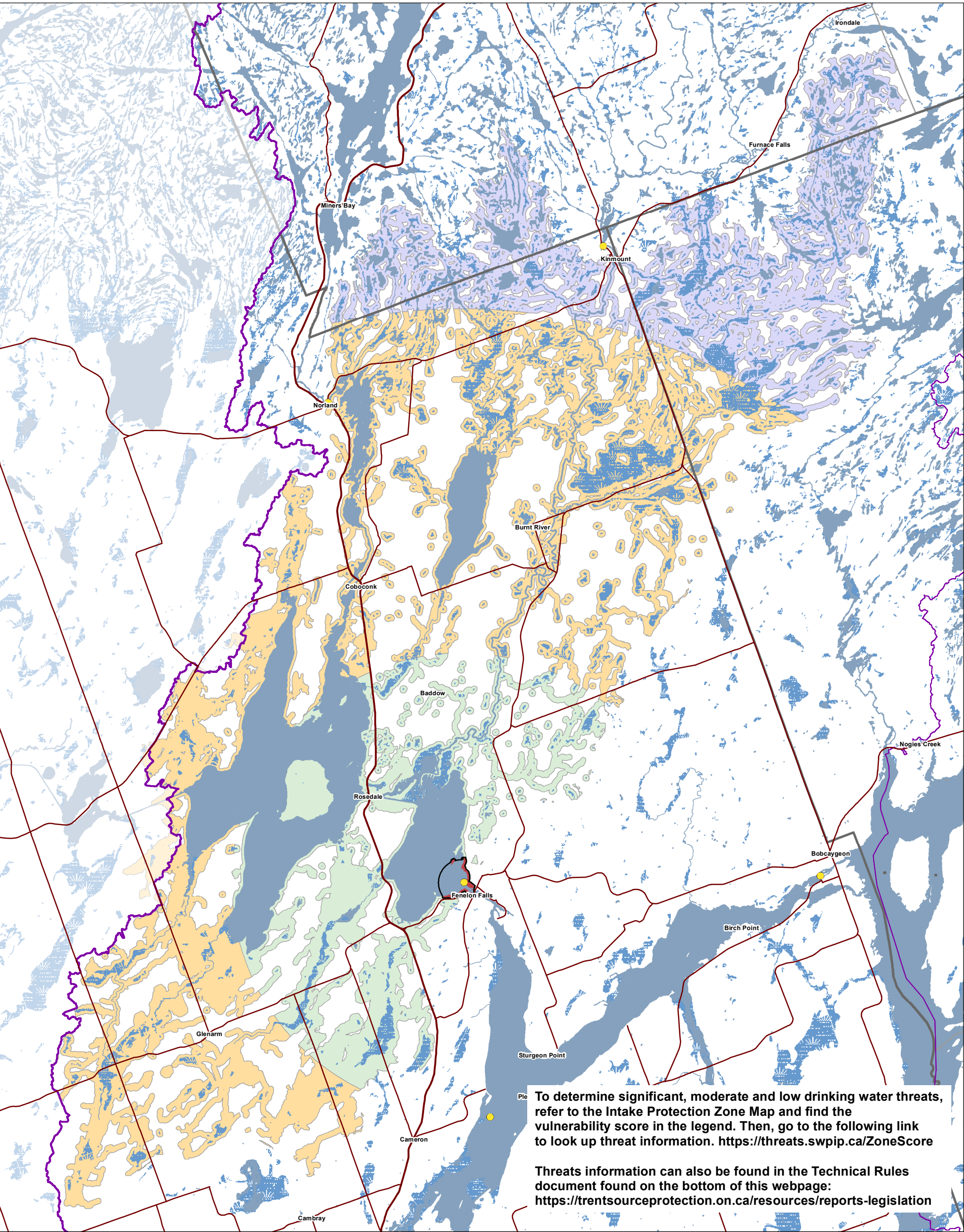
- Surface Water Intake
- +— Railway
- Watercourse
- Main Road
- Highway
- Multi Lane Highway
- Property Boundary
- Source Protection Region
- Source Protection Area
- Lower and Single Tier Municipality
- Upper Tier Municipality
- Intake Protection Zones
- Waterbody
- Wetland



**Trent Conservation Coalition
Source Protection Region**
www.trentsourceprotection.on.ca

This map has been prepared for the purpose of meeting the provincial requirements under the Clean Water Act, 2006. If it is proposed to use it for another purpose, it would be advisable to first consult with the responsible conservation authority.

PRODUCED BY Lower Trent Conservation on behalf of the Trent Conservation Coalition Source Protection Committee, March 2011
(Updated November 2022), with data supplied under licence by members of the Ontario Geospatial Data Exchange.



To determine significant, moderate and low drinking water threats, refer to the Intake Protection Zone Map and find the vulnerability score in the legend. Then, go to the following link to look up threat information. <https://threats.swpip.ca/ZoneScore>

Threats information can also be found in the Technical Rules document found on the bottom of this webpage: <https://trentsourceprotection.on.ca/resources/reports-legislation>

This map has been prepared for the purpose of meeting the provincial requirements under the Clean Water Act, 2006. If it is proposed to use it for another purpose, it would be advisable to first consult with the responsible conservation authority.

PRODUCED BY Lower Trent Conservation on behalf of the Trent Conservation Coalition Source Protection Committee, March 2011.
(Updated Jan 2025), with data supplied under licence by members of the Ontario Geospatial Data Exchange.

Waterbodies and watercourses located within the extent of an intake protection zone are included in that zone.

Ontario
Made possible through the support of the Government of Ontario

Legend

Surface Water Intake

Railway

Watercourse

Main Road

Highway

Multi Lane Highway

Source Protection Region

Source Protection Areas

Upper Tier Municipality

Lower and Single Tier Municipality

Intake Protection Zones

Wetland

Waterbody

Intake Protection Zones

IPZ - 1 & IPZ - 2

IPZ - 3 a (Vulnerability Score = 4.5)

IPZ - 3 b (Vulnerability Score = 2.7)

IPZ - 3 c (Vulnerability Score = 1.8)

