

To determine significant, moderate and low drinking water threats, first refer to the Intake Protection Zone Map and the Vulnerability Scores Map and then go to the following link to look up threat information. <https://threats.swpip.ca/ZoneScore>

Threats information can also be found in the Technical Rules document found on the bottom of this webpage: <https://trentsourceprotection.on.ca/resources/reports-legislation>

Bobcaygeon Municipal Surface Water System

Kawartha - Haliburton Source Protection Area

Intake Protection Zones & Vulnerability Scores (IPZ 1 & 2)

Legend

- Surface Water Intake
- +— Railway
- Watercourse
- Main Road
- Highway
- Multi Lane Highway
- Property Boundary
- Source Protection Region
- Source Protection Area
- Upper Tier Municipality
- Lower and Single Tier Municipality
- Waterbody
- Wetland

0 125 250 500

Meters

Scale referenced to the map on the left

Trent Conservation Coalition Source Protection Region

www.trentsourceprotection.on.ca

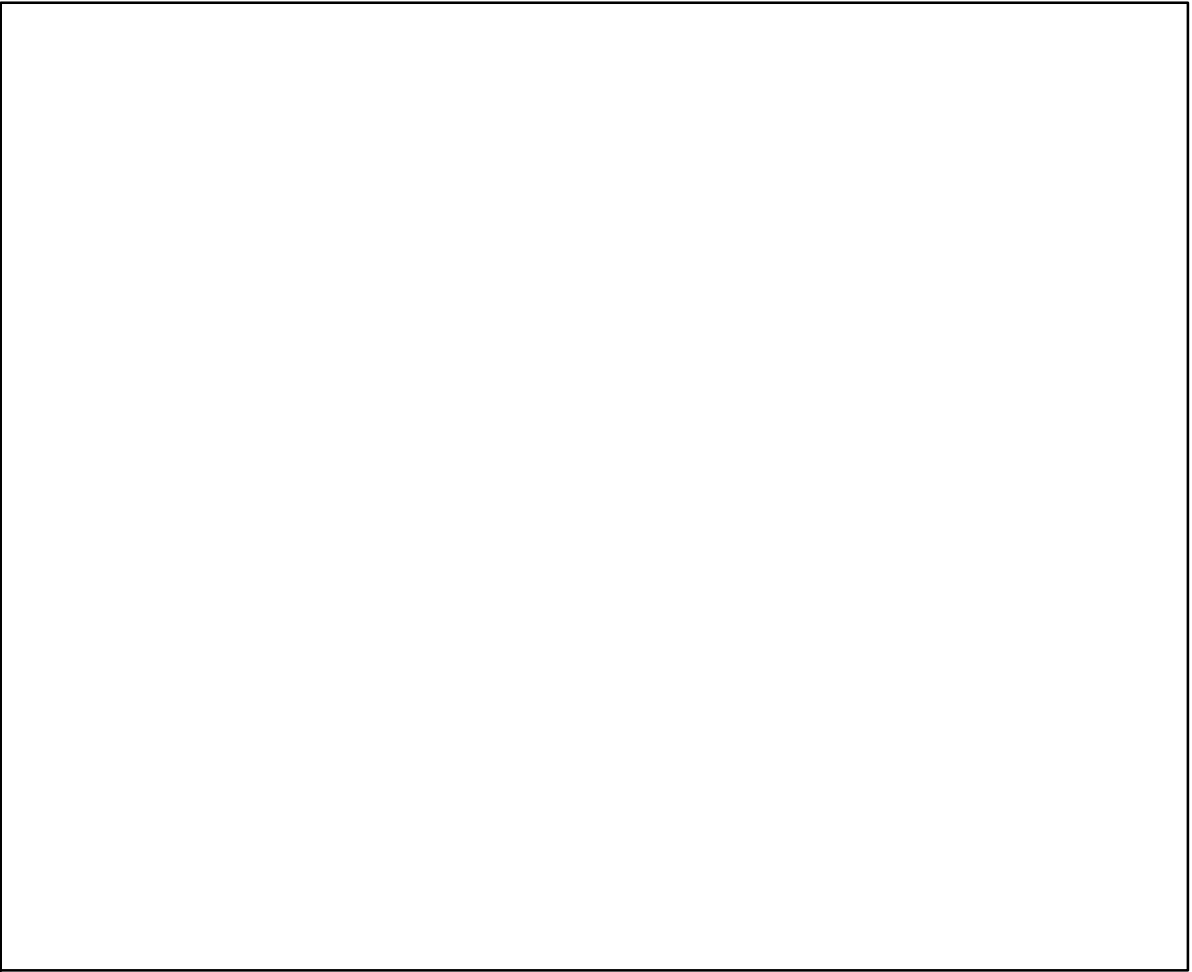
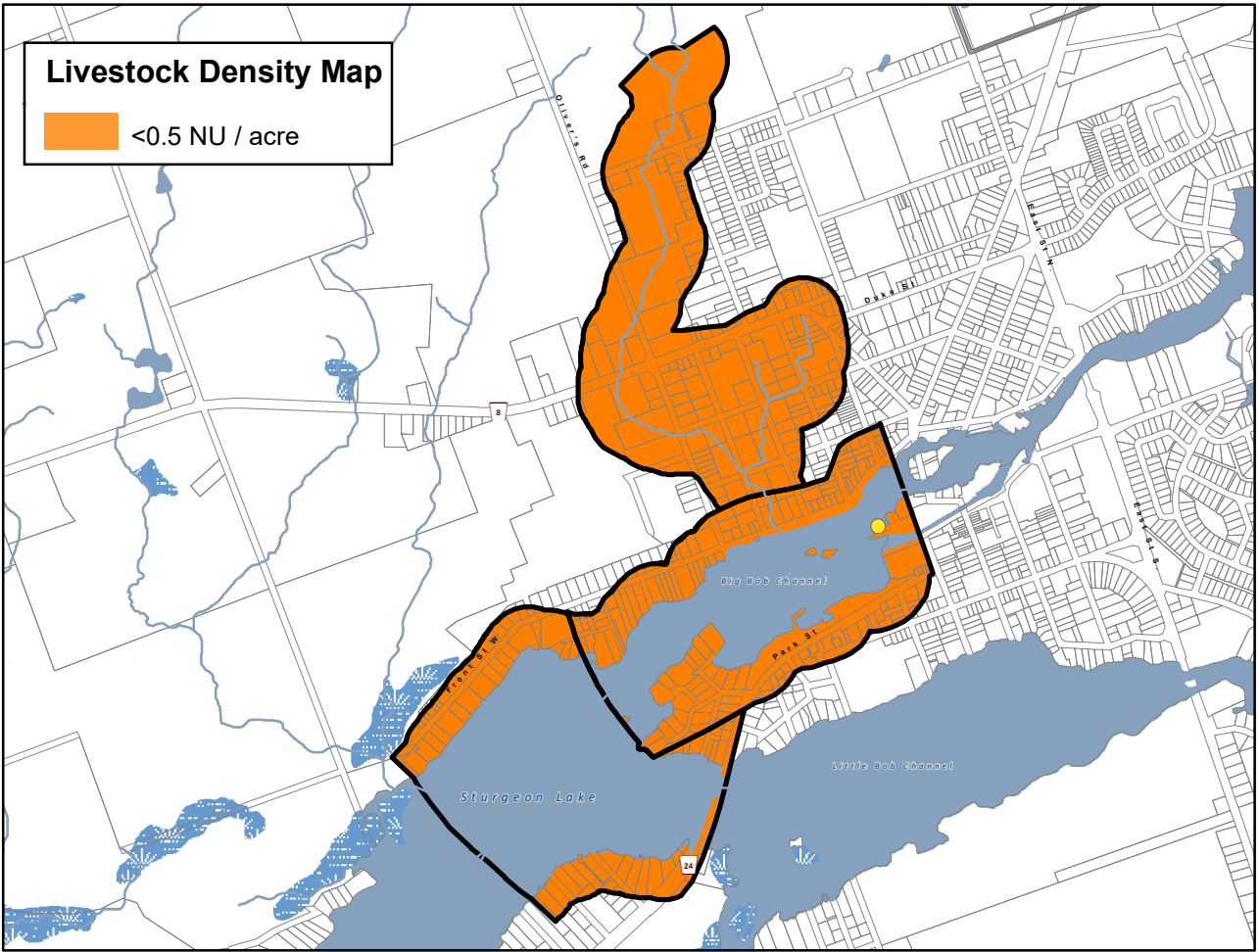
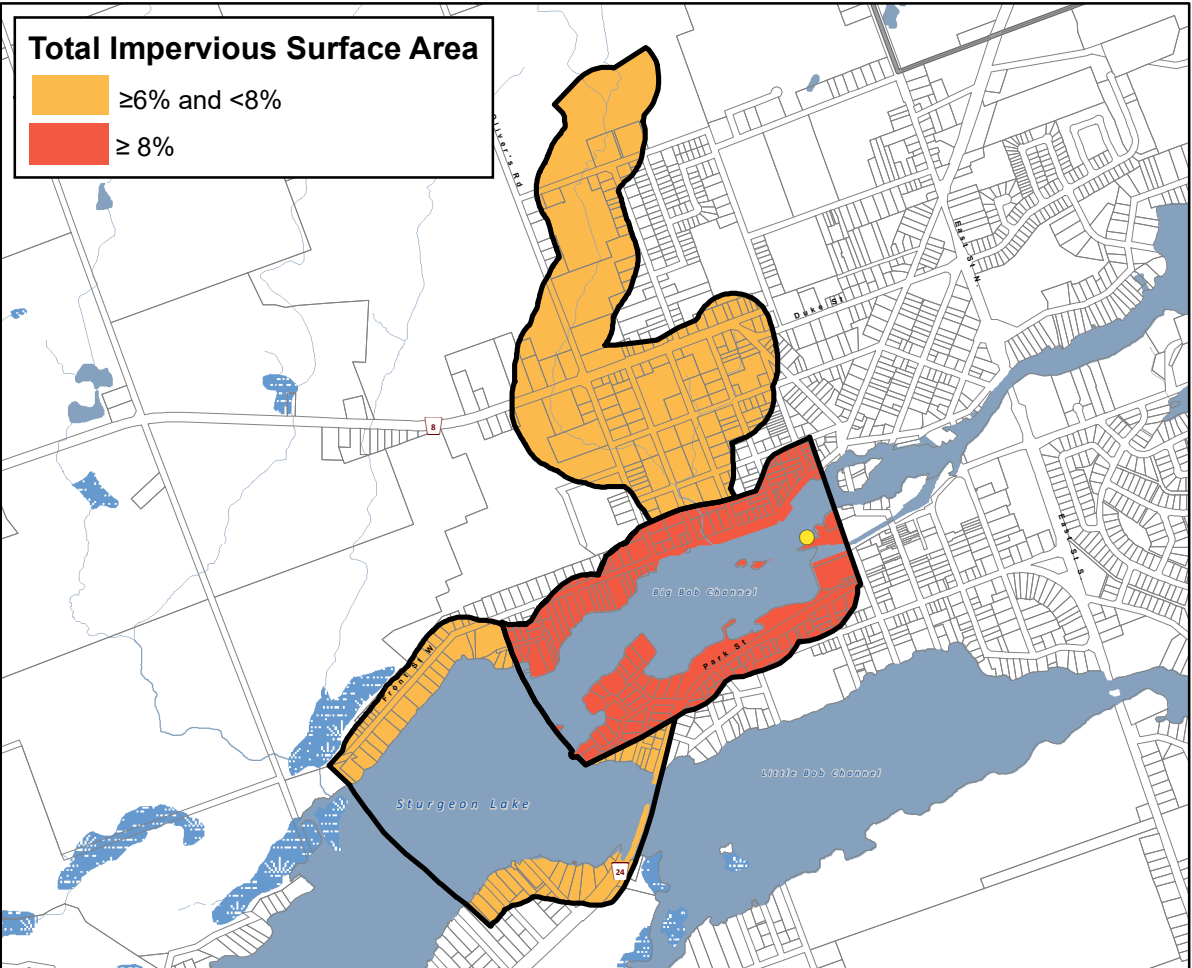
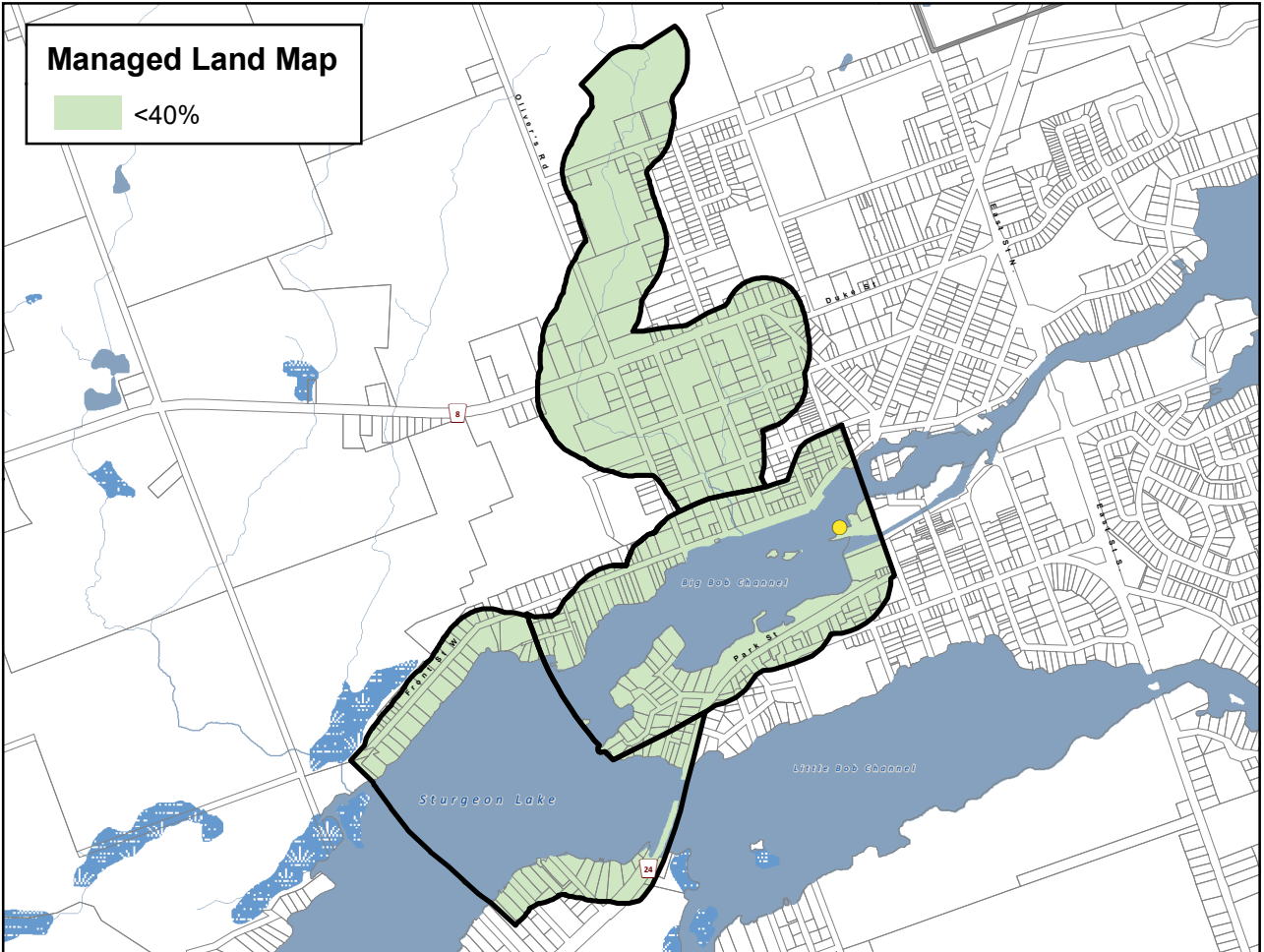
This map has been prepared for the purpose of meeting the provincial requirements under the Clean Water Act, 2006. If it is proposed to use it for another purpose, it would be advisable to first consult with the responsible conservation authority.

PRODUCED BY Lower Trent Conservation on behalf of the Trent Conservation Coalition Source Protection Committee, March 2011 (Updated Jan 2025), with data supplied under licence by members of the Ontario Geospatial Data Exchange.

Waterbodies and watercourses located within the extent of an intake protection zone are included in that zone.

Ontario

Made possible through the support of the Government of Ontario

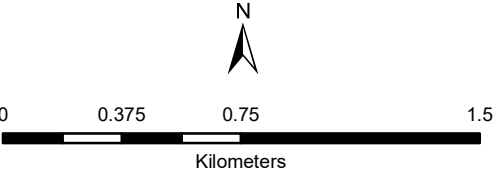


Bobcaygeon Municipal
Surface Water System
Kawartha - Haliburton Source
Protection Area

Managed Land, Livestock
Density & Total
Impervious Surface Area

Legend

- Surface Water Intake
- +— Railway
- Watercourse
- Main Road
- Highway
- Multi Lane Highway
- Property Boundary
- Source Protection Region
- Source Protection Area
- Upper and Single Tier Municipality
- Lower Tier Municipality
- Intake Protection Zones
- Waterbody
- Wetland



Trent Conservation Coalition
Source Protection Region
www.trentsourceprotection.on.ca

This map has been prepared for the purpose of meeting the provincial requirements under the Clean Water Act, 2006. If it is proposed to use it for another purpose, it would be advisable to first consult with the responsible conservation authority.

PRODUCED BY Lower Trent Conservation on behalf of the Trent Conservation Coalition Source Protection Committee, March 2011
(Updated November 2022), with data supplied under licence by members of the Ontario Geospatial Data Exchange.

