

To determine significant, moderate and low drinking water threats, first refer to the Wellhead Protection Areas Map and the Vulnerability Scores Map and then go to the following link to look up threat information. <https://threats.swpip.ca/ZoneScore>

Threats information can also be found in the Technical Rules document found on the bottom of this webpage: <https://trentsourceprotection.on.ca/resources/reports-legislation>

DRINKING WATER
SOURCE PROTECTION
ACT FOR CLEAN WATER

Stirling
Municipal Well System
Lower Trent
Source Protection Area
Wellhead Protection Areas
& Vulnerability

Legend

- Wells
- Railway
- Main Road
- Highway
- Multi Lane Highway
- Source Protection Areas
- Source Protection Region
- Property Boundary
- Lower and Single Tier Municipality
- Upper Tier Municipality
- Waterbody
- Wetland
- Watercourse

0 0.5 1 2
Kilometres

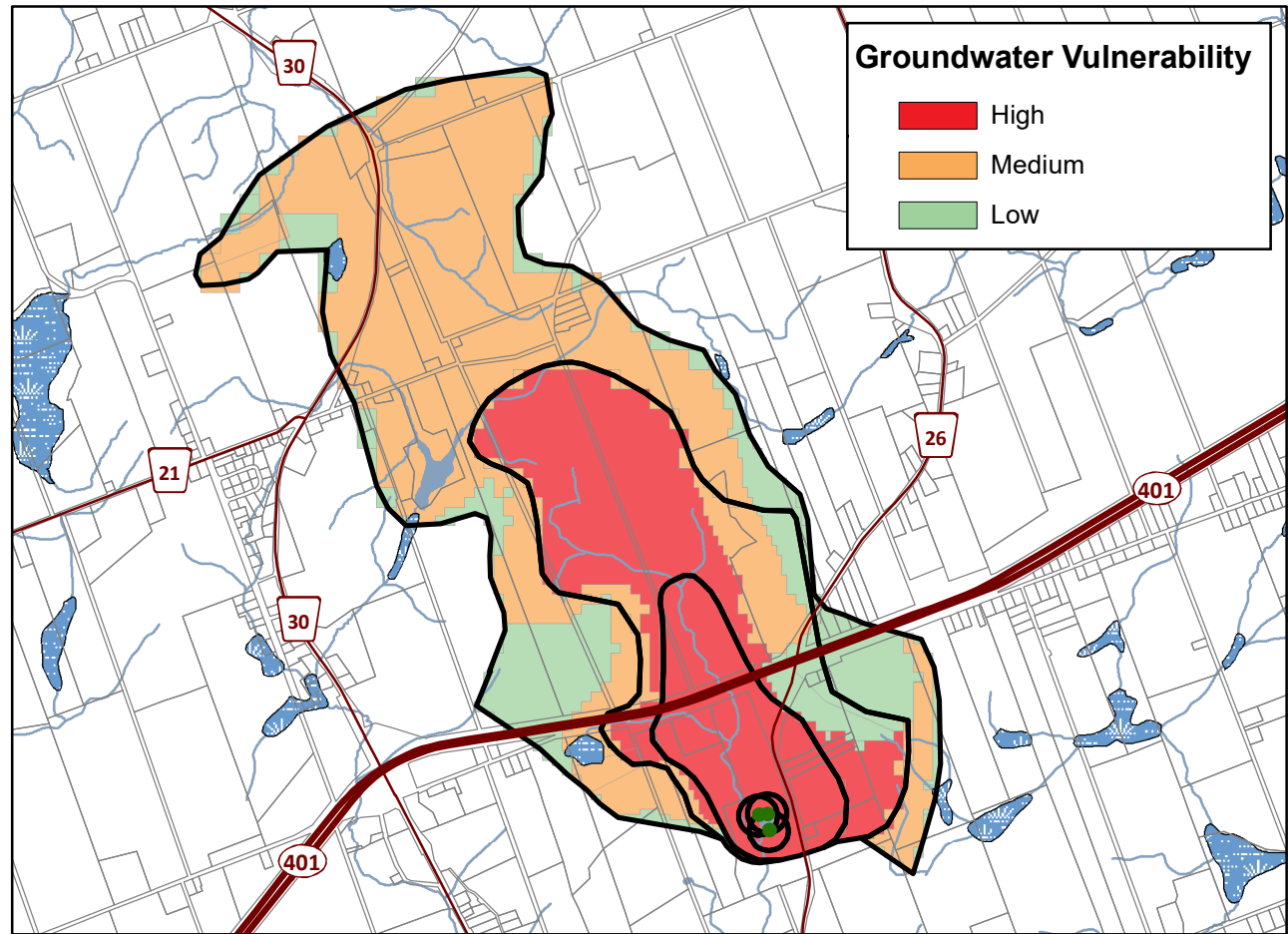
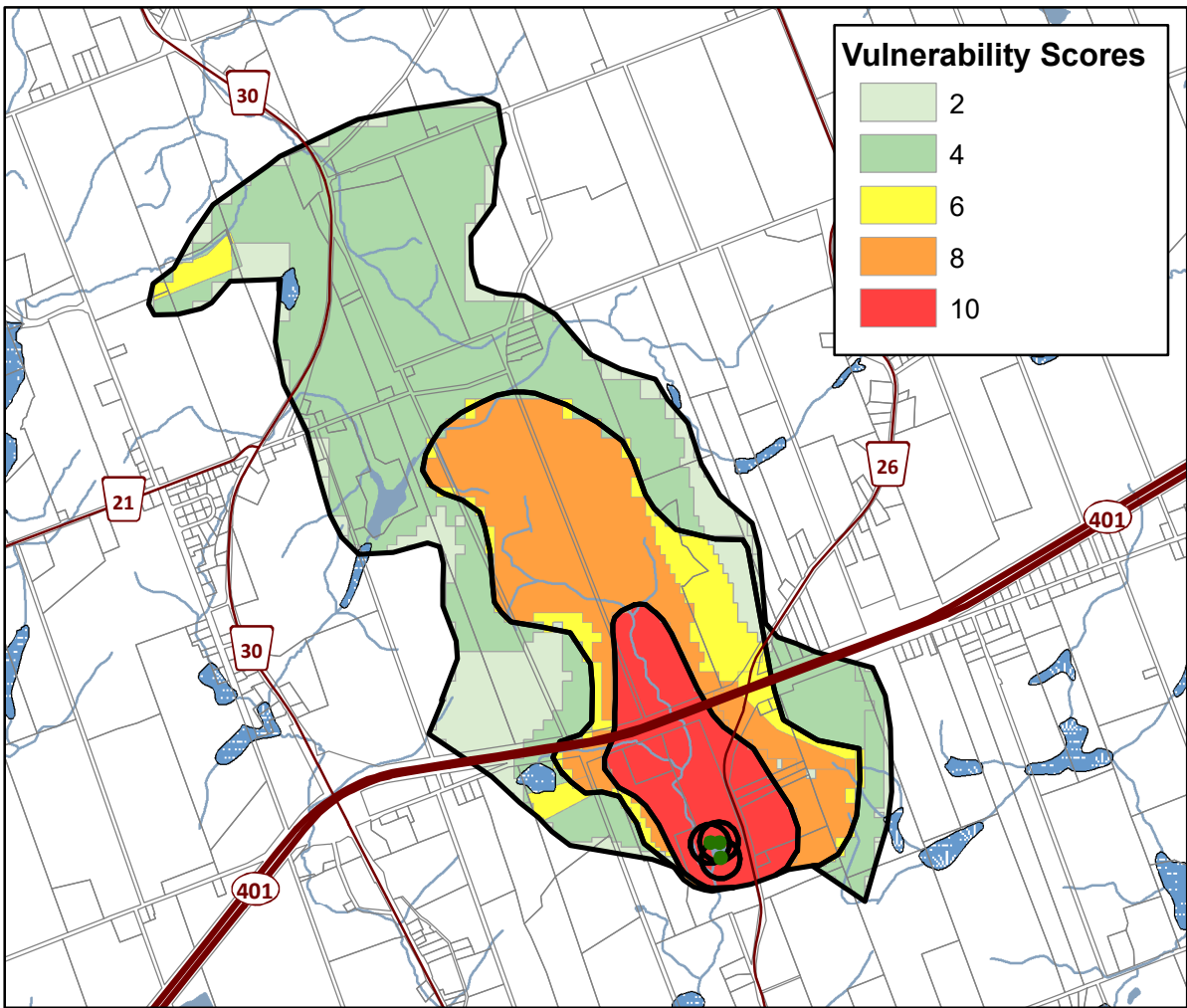
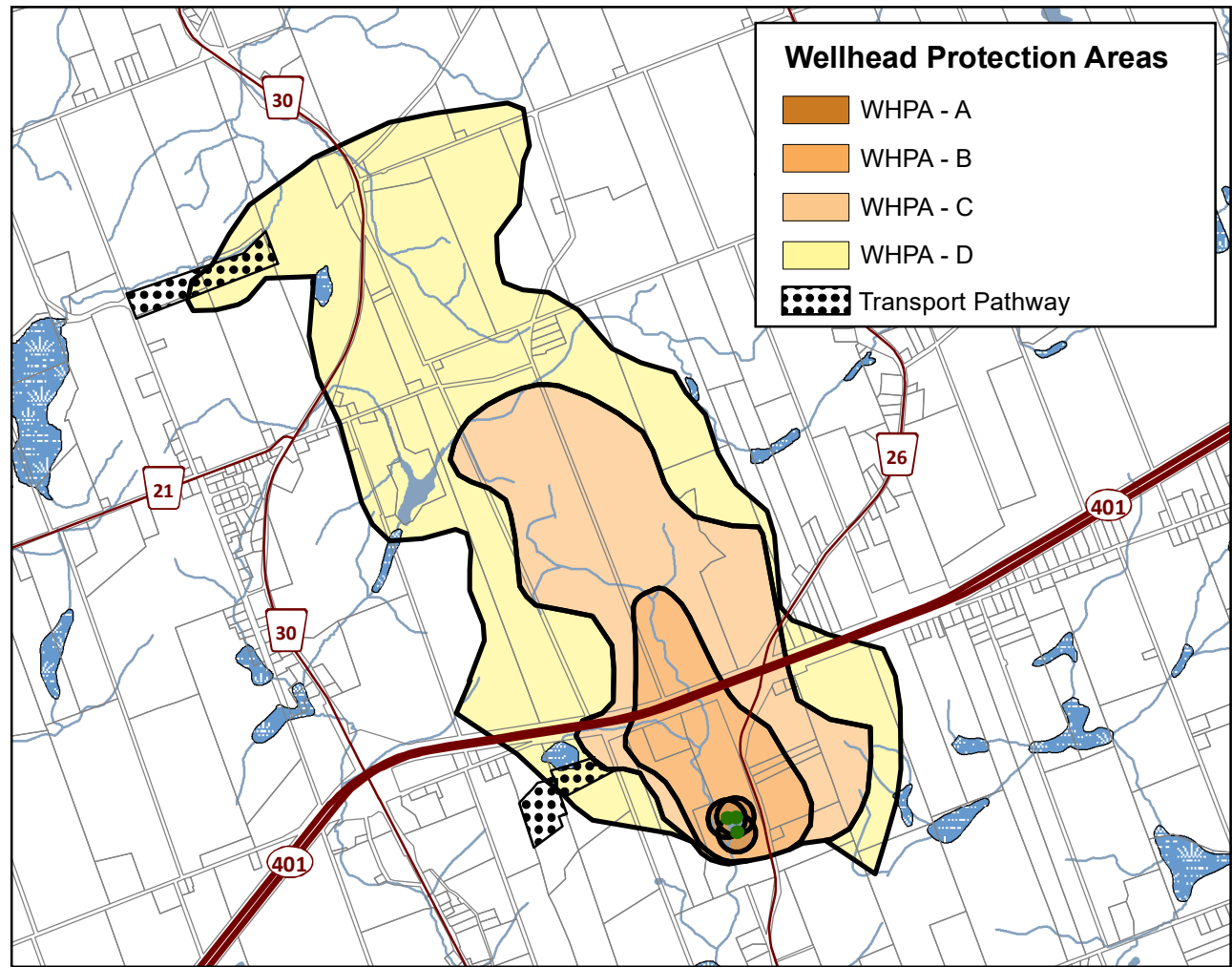
Trent Conservation Coalition
Source Protection Region
www.trentsourceprotection.on.ca

This map has been prepared for the purpose of meeting the provincial requirements under the Clean Water Act, 2006. If it is proposed to use it for another purpose, it would be advisable to first consult with the responsible conservation authority.

PRODUCED BY Lower Trent Conservation on behalf of the Trent Conservation Coalition Source Protection Committee, March 2011.
(Updated Oct 2024), with data supplied under licence by members of the Ontario Geospatial Data Exchange.

NOTE: Waterbodies and watercourses located within the extent of a wellhead protection area are included in that area.

Ontario
Made possible through the support
of the Government of Ontario



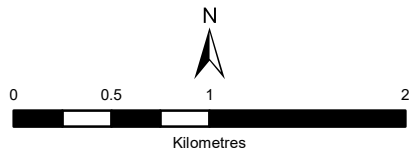
To determine significant, moderate and low drinking water threats, first refer to the Wellhead Protection Areas Map and the Vulnerability Scores Map and then go to the following link to look up threat information. <https://threats.swpip.ca/ZoneScore>

Threats information can also be found in the Technical Rules document found on the bottom of this webpage: <https://trentsourceprotection.on.ca/resources/reports-legislation>

Brighton Municipal Well System Lower Trent Source Protection Area Wellhead Protection Areas & Vulnerability

Legend

- Municipal Wells
- Railway
- Watercourse
- Main Road
- Highway
- Multi Lane Highway
- Source Protection Region
- Source Protection Areas
- Upper Tier Municipality
- Lower and Single Tier Municipality
- Property Boundary
- Wellhead Protection Areas
- Waterbody
- Wetland

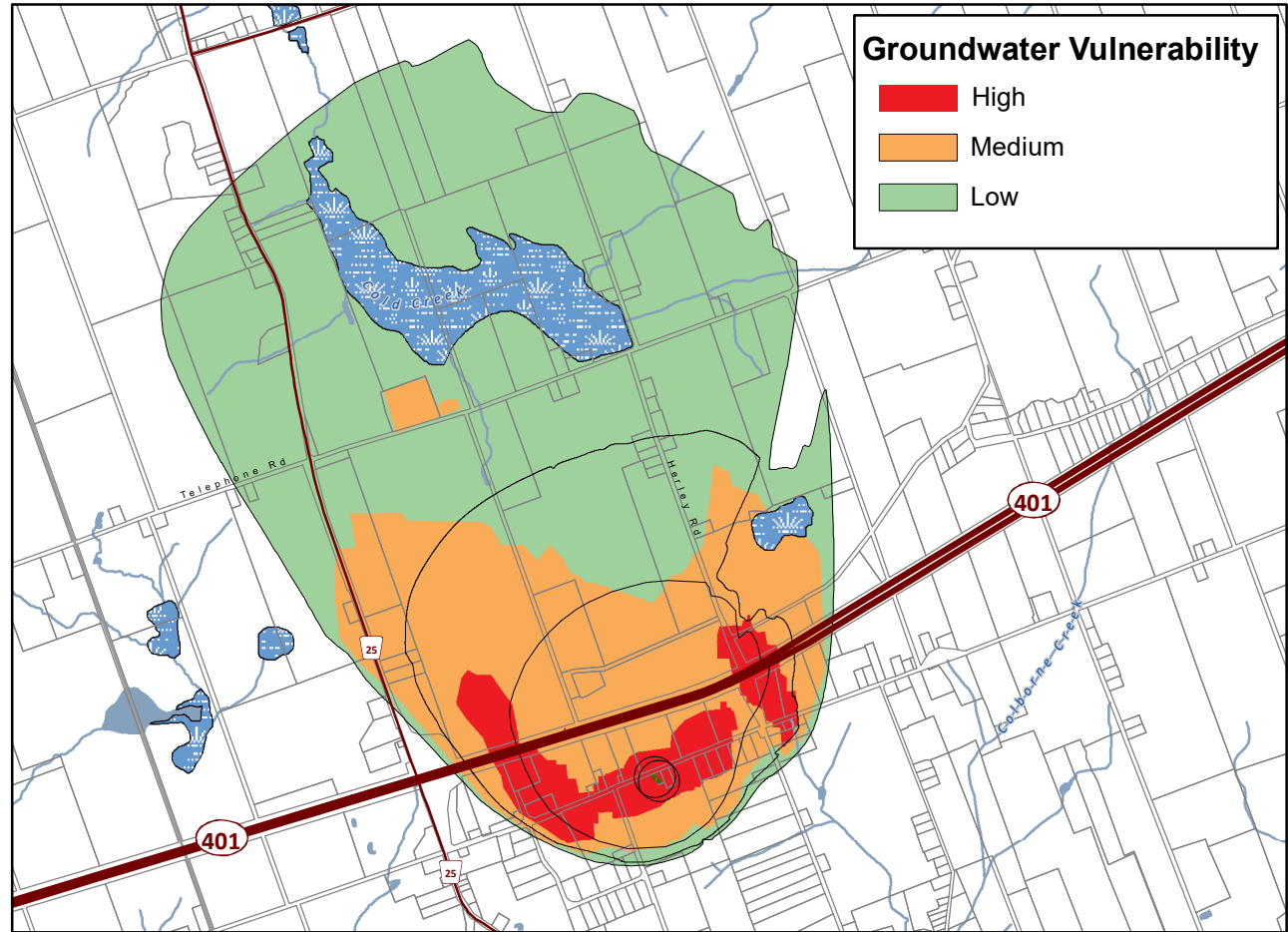
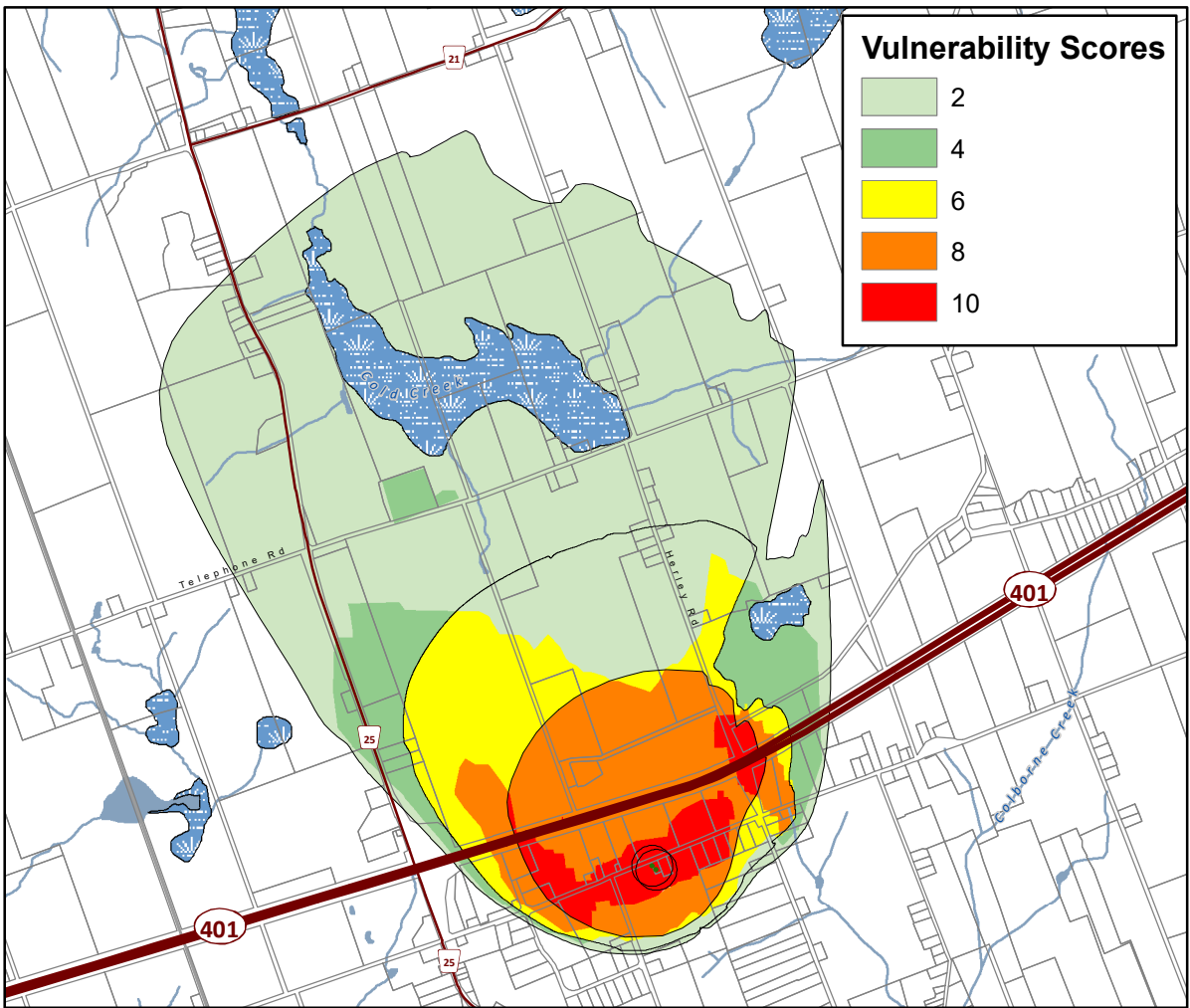
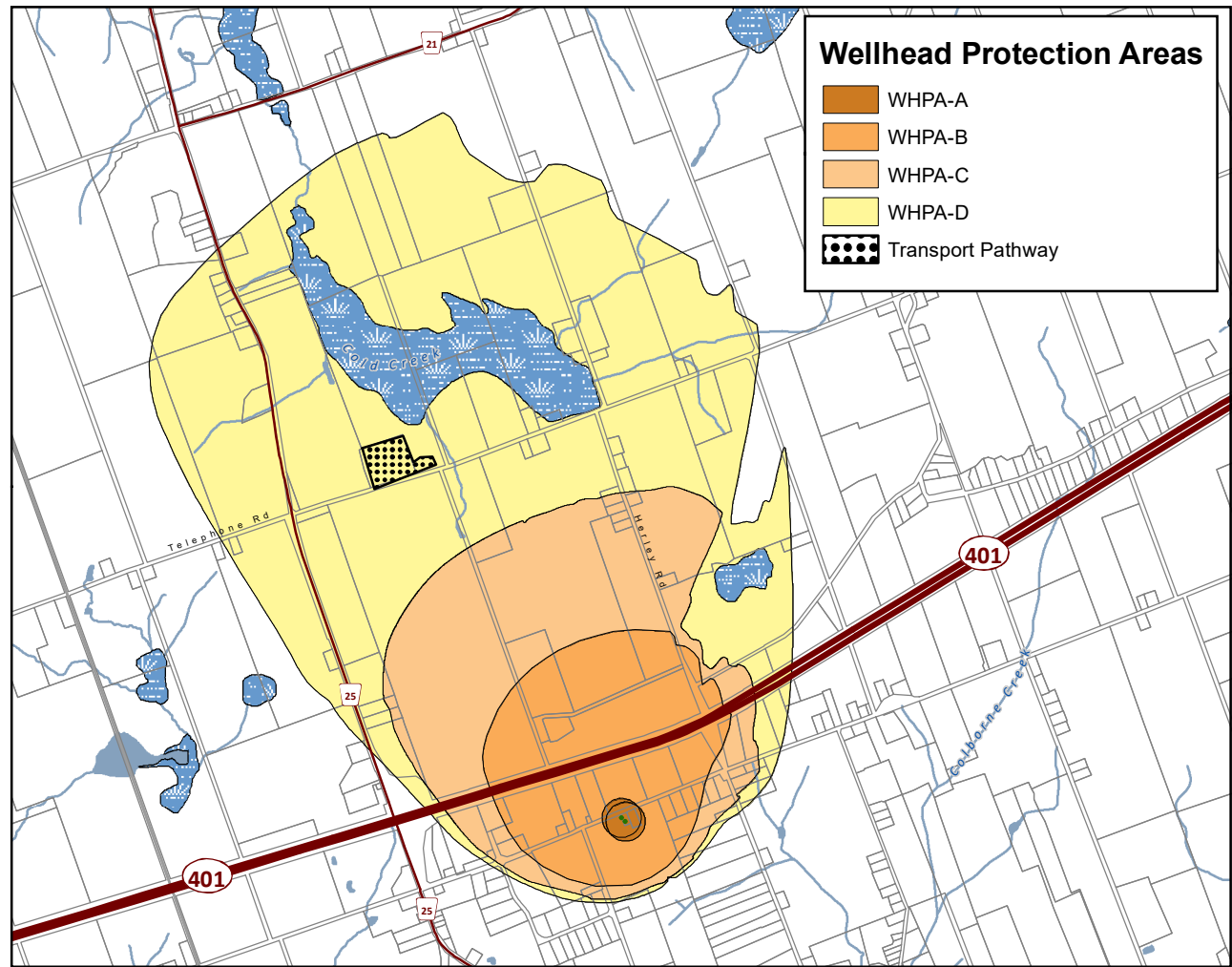


**Trent Conservation Coalition
Source Protection Region**
www.trentsourceprotection.on.ca

This map has been prepared for the purpose of meeting the provincial requirements under the Clean Water Act, 2006. If it is proposed to use it for another purpose, it would be advisable to first consult with the responsible conservation authority.

PRODUCED BY Lower Trent Conservation on behalf of the Trent Conservation Coalition Source Protection Committee, March 2011.
(Updated Oct 2024), with data supplied under licence by members of the Ontario Geospatial Data Exchange.

NOTE: Waterbodies and watercourses located within the extent of a wellhead protection area are included in that area.



To determine significant, moderate and low drinking water threats, first refer to the Wellhead Protection Areas Map and the Vulnerability Scores Map and then go to the following link to look up threat information. <https://threats.swpip.ca/ZoneScore>

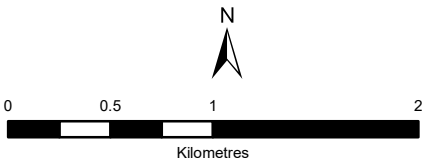
Threats information can also be found in the Technical Rules document found on the bottom of this webpage: <https://trentsourceprotection.on.ca/resources/reports-legislation>

Colborne Municipal Well System Lower Trent Source Protection Area

Wellhead Protection Areas & Vulnerability

Legend

- Municipal Wells
- Railway
- Watercourse
- Main Road
- Highway
- Multi Lane Highway
- Property Boundary
- Source Protection Region
- Source Protection Area
- Lower and Single Tier Municipality
- Upper Tier Municipality
- Wellhead Protection Areas
- Waterbody
- Wetland

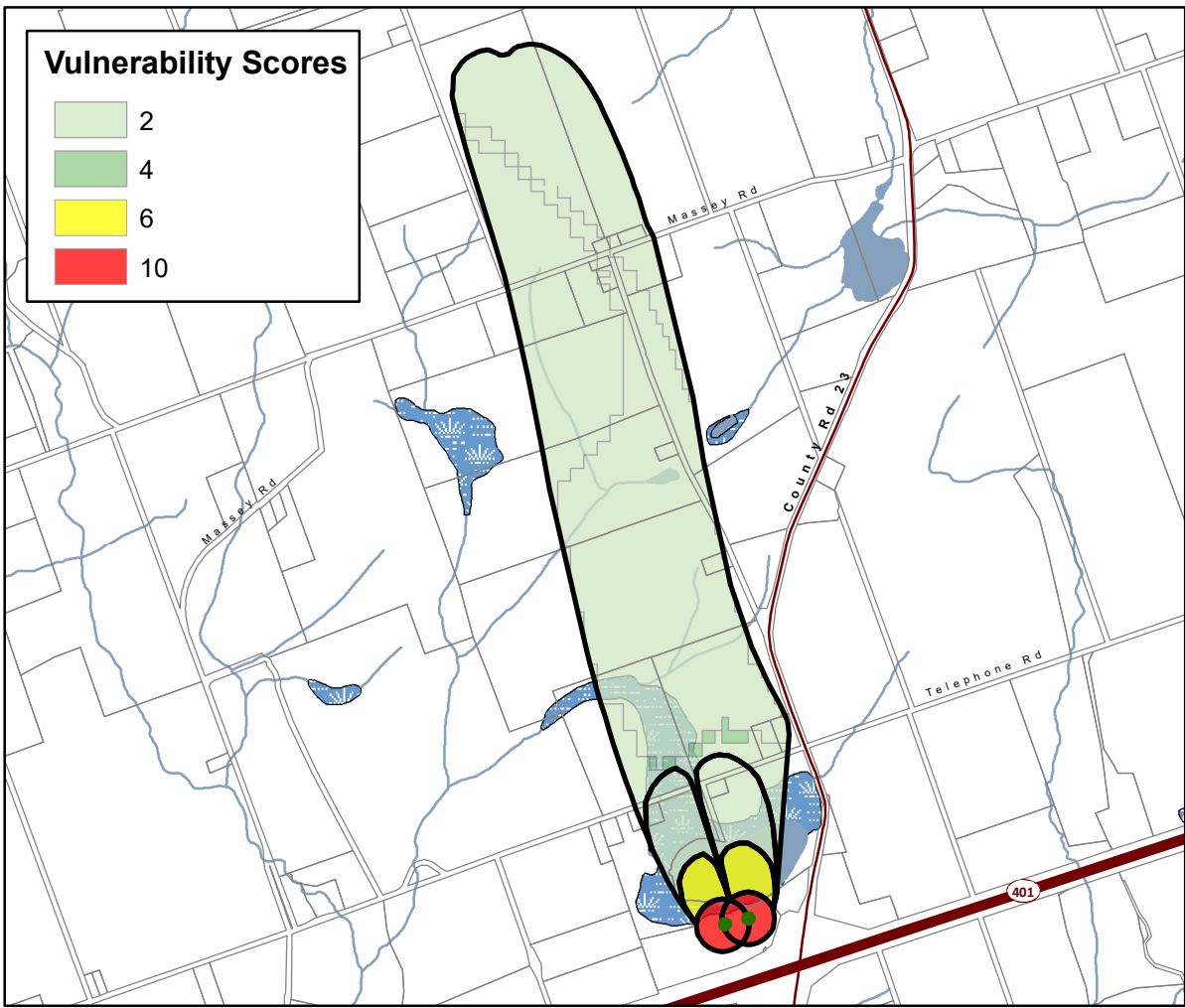
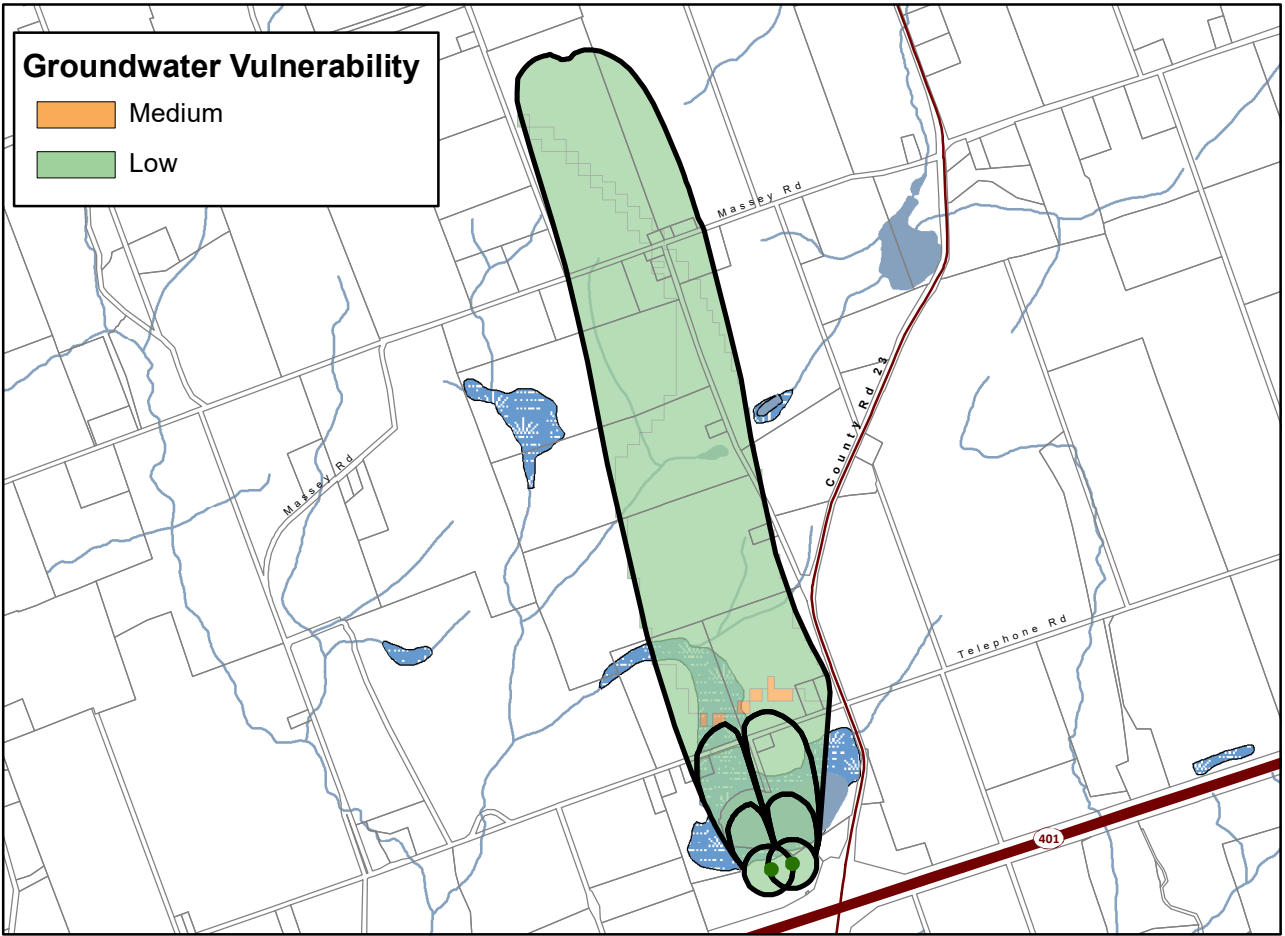
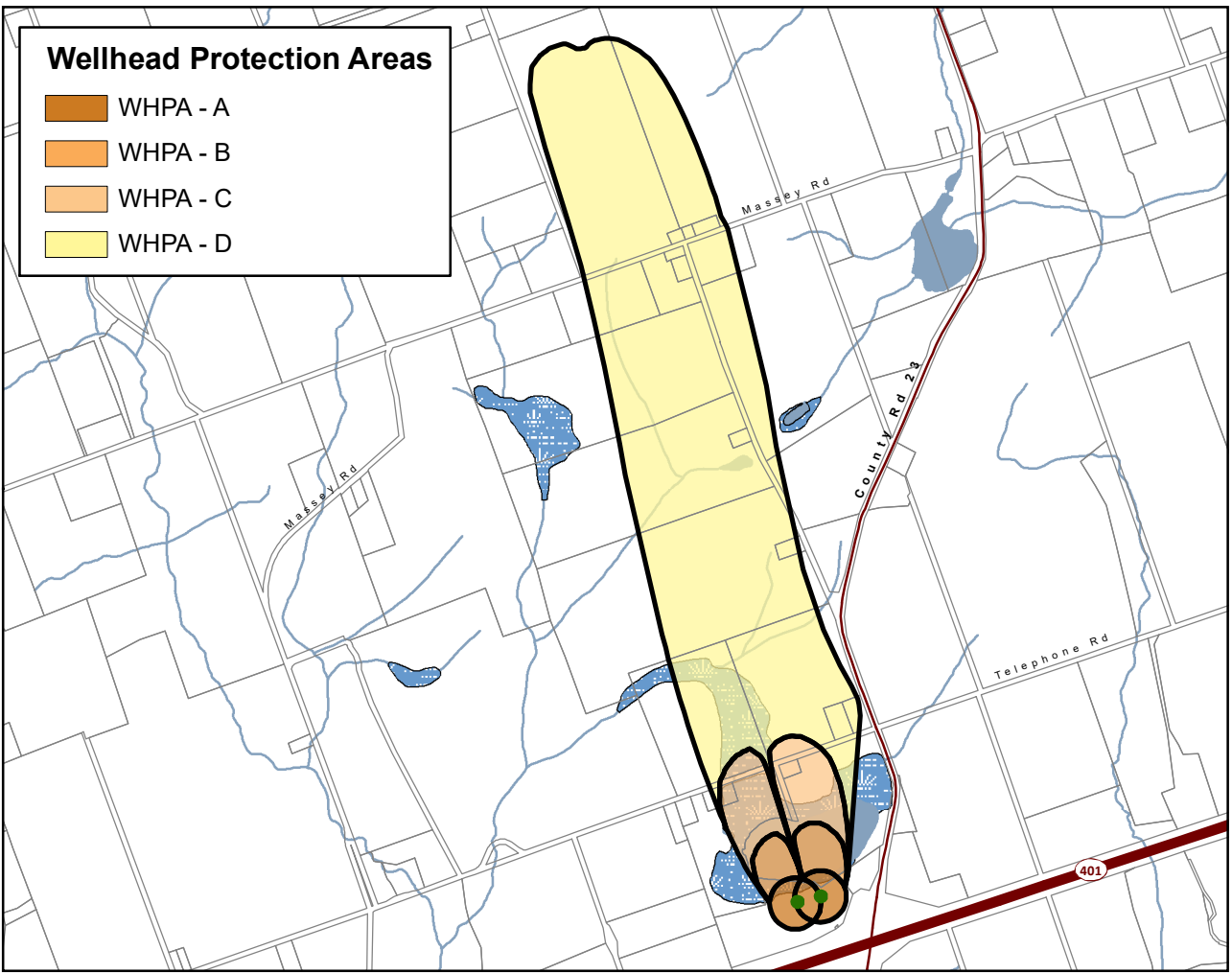


**Trent Conservation Coalition
Source Protection Region**
www.trentsourceprotection.on.ca

This map has been prepared for the purpose of meeting the provincial requirements under the Clean Water Act, 2006. If it is proposed to use it for another purpose, it would be advisable to first consult with the responsible conservation authority.

PRODUCED BY Lower Trent Conservation on behalf of the Trent Conservation Coalition Source Protection Committee, March 2011.
(Updated Oct 2024), with data supplied under licence by members of the Ontario Geospatial Data Exchange.

NOTE: Waterbodies and watercourses located within the extent of a wellhead protection area are included in that area.

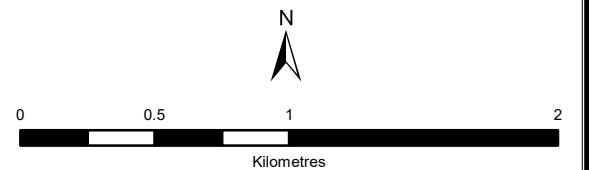


To determine significant, moderate and low drinking water threats, first refer to the Wellhead Protection Areas Map and the Vulnerability Scores Map and then go to the following link to look up threat information. <https://threats.swpip.ca/ZoneScore>

Threats information can also be found in the Technical Rules document found on the bottom of this webpage: <https://trentsourceprotection.on.ca/resources/reports-legislation>

Grafton Municipal Well System Lower Trent Source Protection Area Wellhead Protection Areas & Vulnerability

- Legend**
- Municipal Wells
 - +— Railway
 - Watercourse
 - Main Road
 - Highway
 - Multi Lane Highway
 - Property Boundary
 - Source Protection Region
 - Source Protection Area
 - Upper and Single Tier Municipality
 - Lower Tier Municipality
 - Wellhead Protection Areas
 - Waterbody
 - Wetland



**Trent Conservation Coalition
Source Protection Region**
www.trentsourceprotection.on.ca

This map has been prepared for the purpose of meeting the provincial requirements under the Clean Water Act, 2006. If it is proposed to use it for another purpose, it would be advisable to first consult with the responsible conservation authority.

PRODUCED BY Lower Trent Conservation on behalf of the Trent Conservation Coalition Source Protection Committee, March 2011.
(Updated Oct 2024), with data supplied under licence by members of the Ontario Geospatial Data Exchange.

NOTE: Waterbodies and watercourses located within the extent of a wellhead protection area are included in that area.

Ontario
Made possible through the support of the Government of Ontario