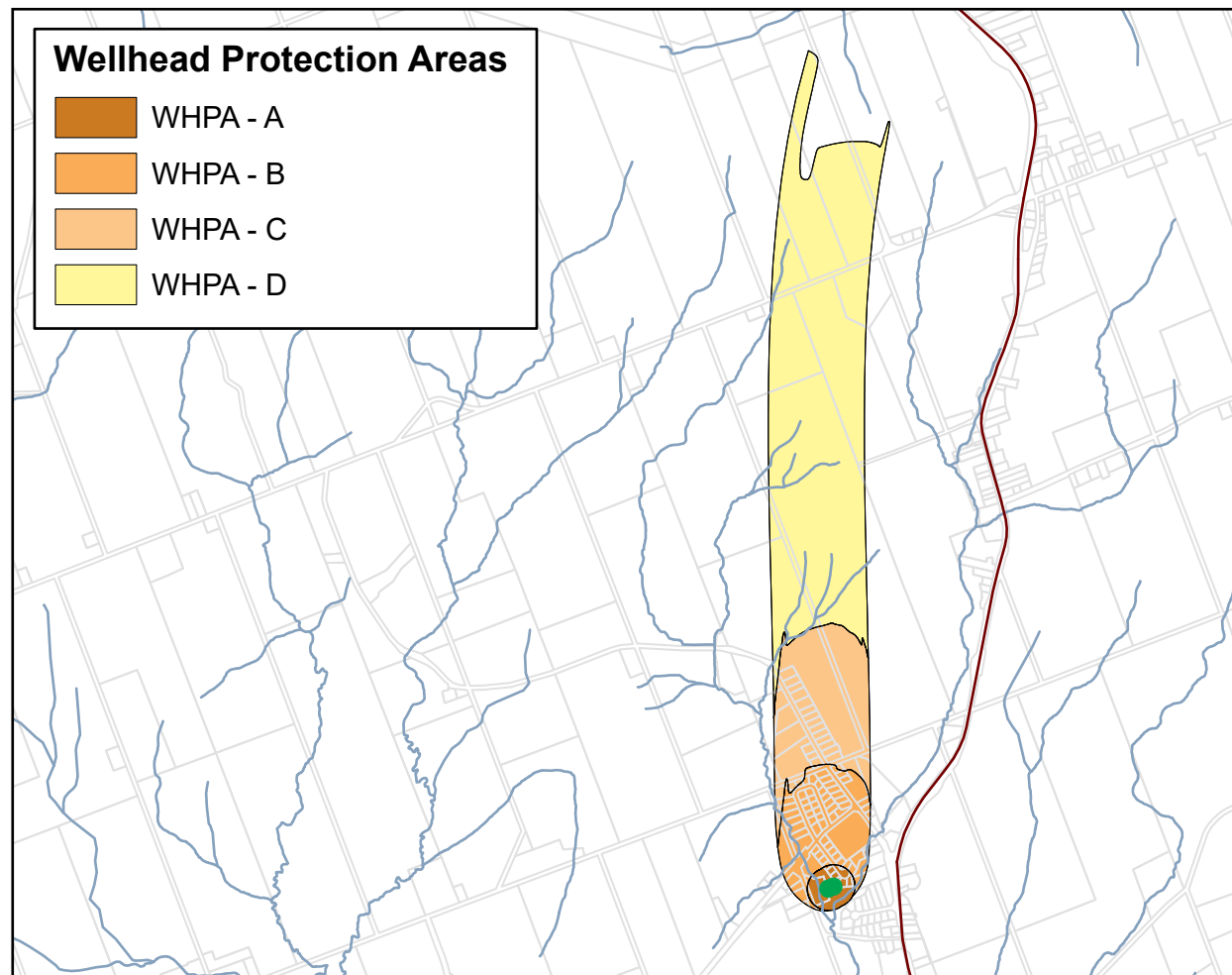


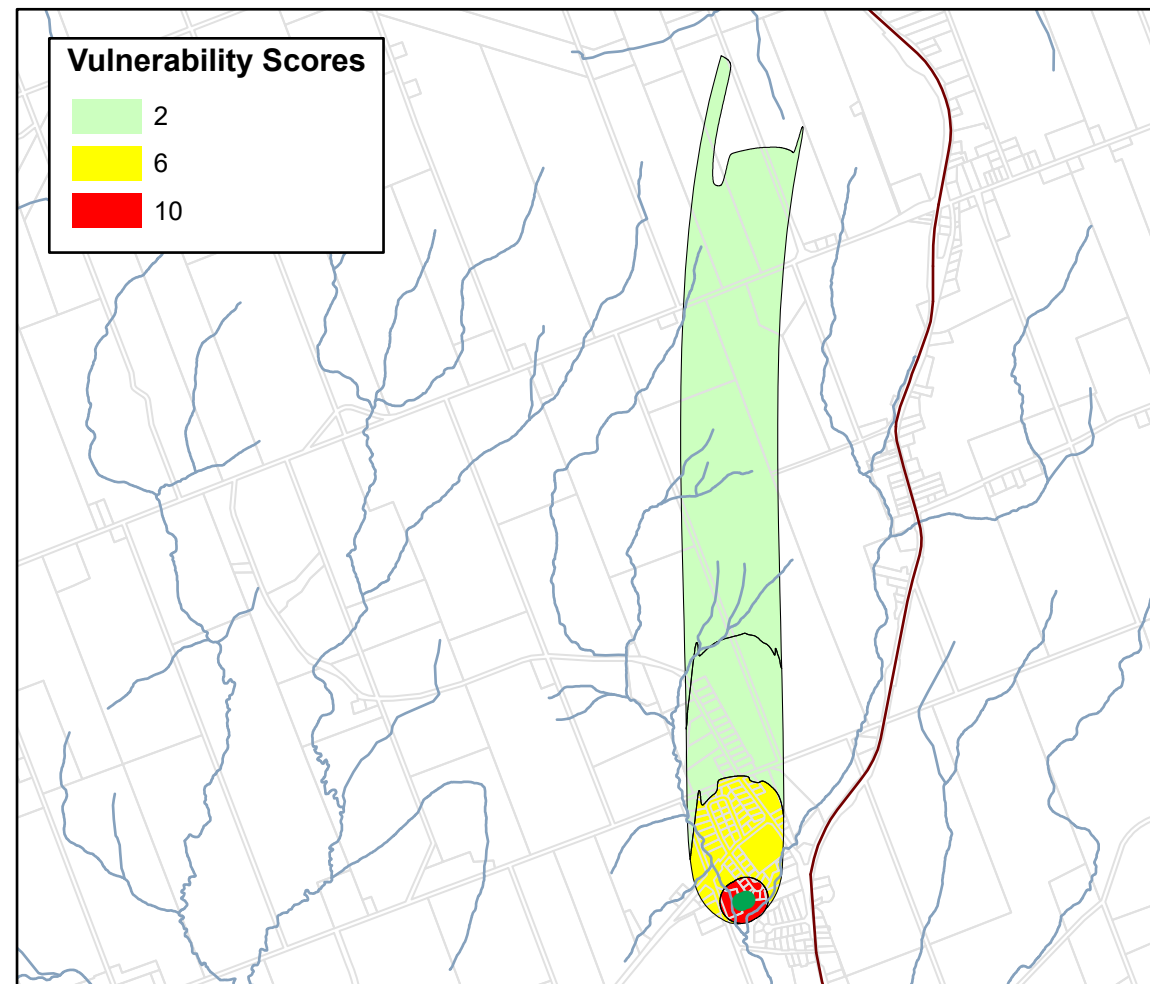
Wellhead Protection Areas

- WHPA - A
- WHPA - B
- WHPA - C
- WHPA - D



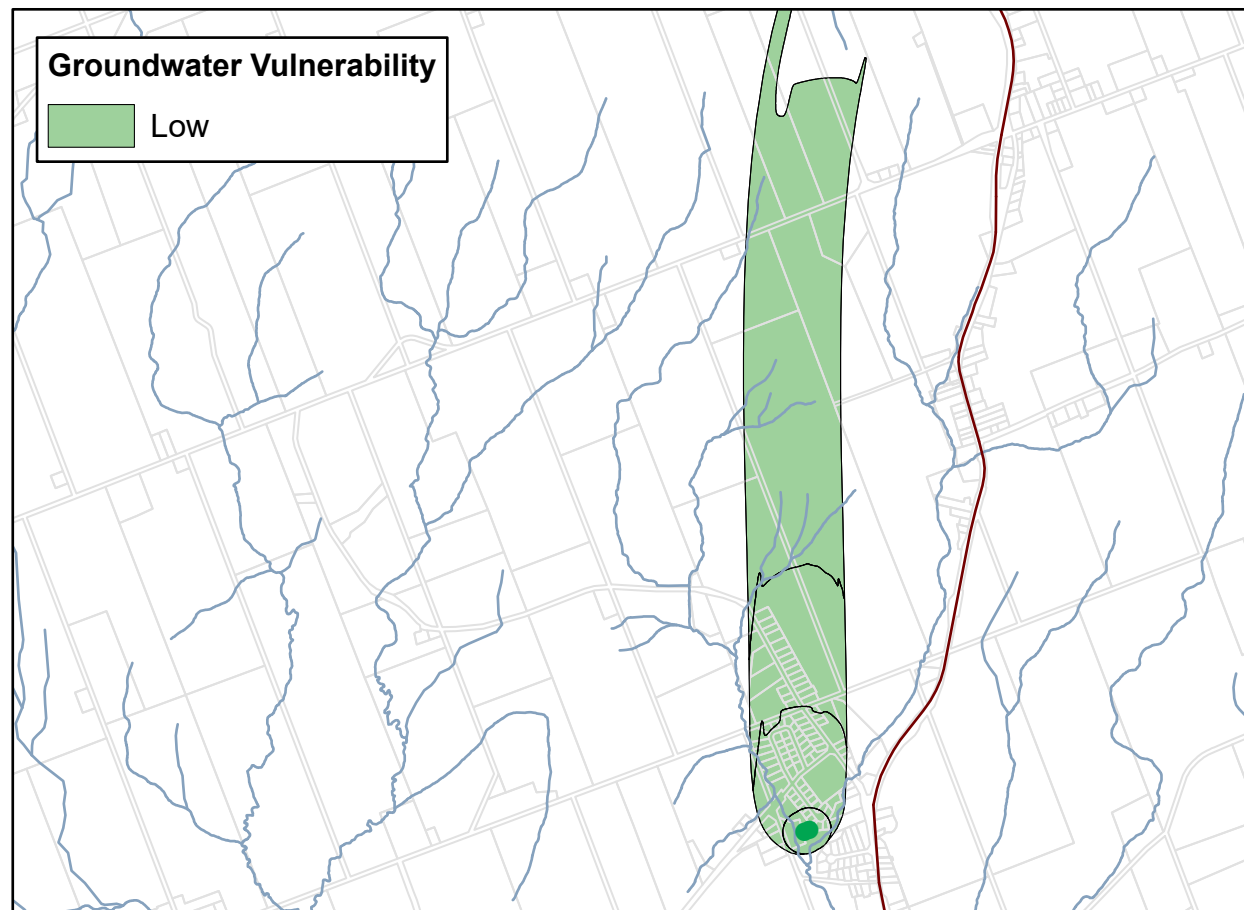
Vulnerability Scores

- 2
- 6
- 10



Groundwater Vulnerability

- Low



To determine significant, moderate and low drinking water threats, first refer to the Wellhead Protection Areas Map and the Vulnerability Scores Map and then go to the following link to look up threat information. <https://threats.swpip.ca/ZoneScore>

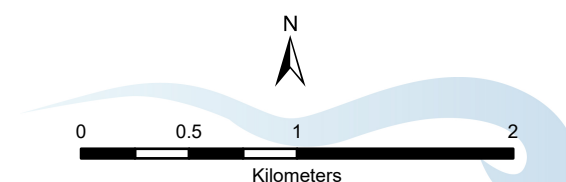
Threats information can also be found in the Technical Rules document found on the bottom of this webpage: <https://trentsourceprotection.on.ca/resources/reports-legislation>



Camborne Well Supply Ganaraska Region Source Protection Area Wellhead Protection Areas & Vulnerability Scores

Legend

- Municipal Well
- Road
- Highway
- Multi-Lane Highway
- Railway
- Watercourse
- Waterbody
- Property boundary
- Source Protection Area Boundary
- Upper and Single Tier Municipality
- Lower Tier Municipality



**Trent Conservation Coalition
Source Protection Region**

www.trentsourceprotection.on.ca

This map has been prepared for the purposes of meeting the Provincial requirements under the Clean Water Act, 2006. If it is proposed to use it for another purpose, it would be advisable to first consult with the responsible Conservation Authority.

PRODUCED BY Ganaraska Region Conservation Authority on behalf of the Trent Conservation Coalition Source Protection Committee, April 2025, with data supplied under licence by members of the Ontario Geospatial Data Exchange.

