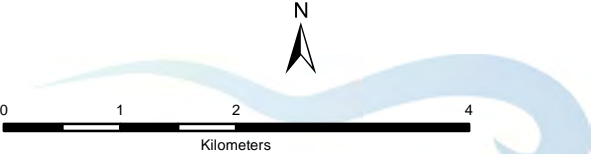


Cobourg Surface Water Supply Ganaraska Region Source Protection Area

Intake Protection Zones & Vulnerability Scores

- Legend**
- Surface Water Intake
 - Road
 - Highway
 - Multi-Lane Highway
 - Railway
 - Watercourse
 - Waterbody
 - IPZ 1 and 2
 - Source Protection Area
 - Property Boundary
 - Upper and Single Tier Municipality
 - Lower Tier Municipality



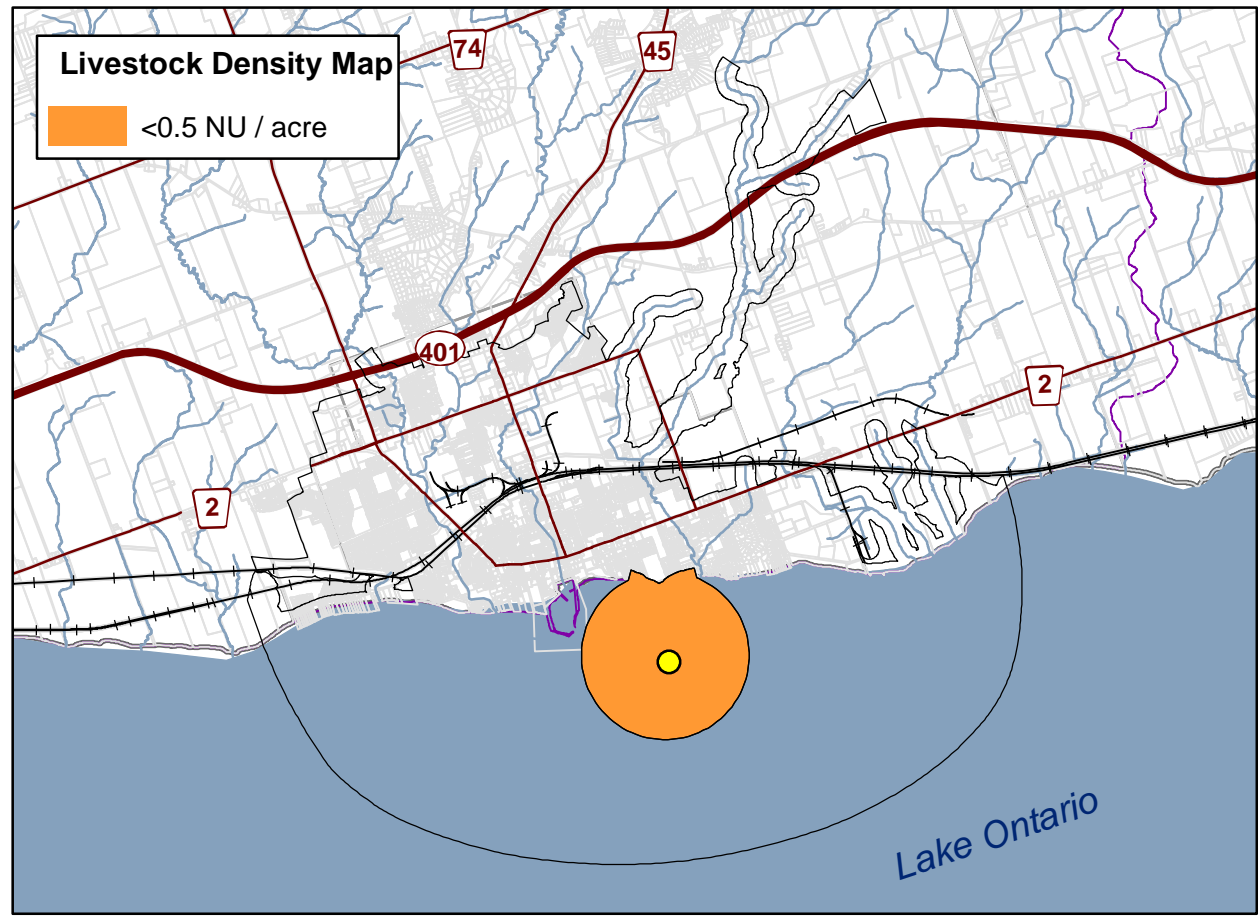
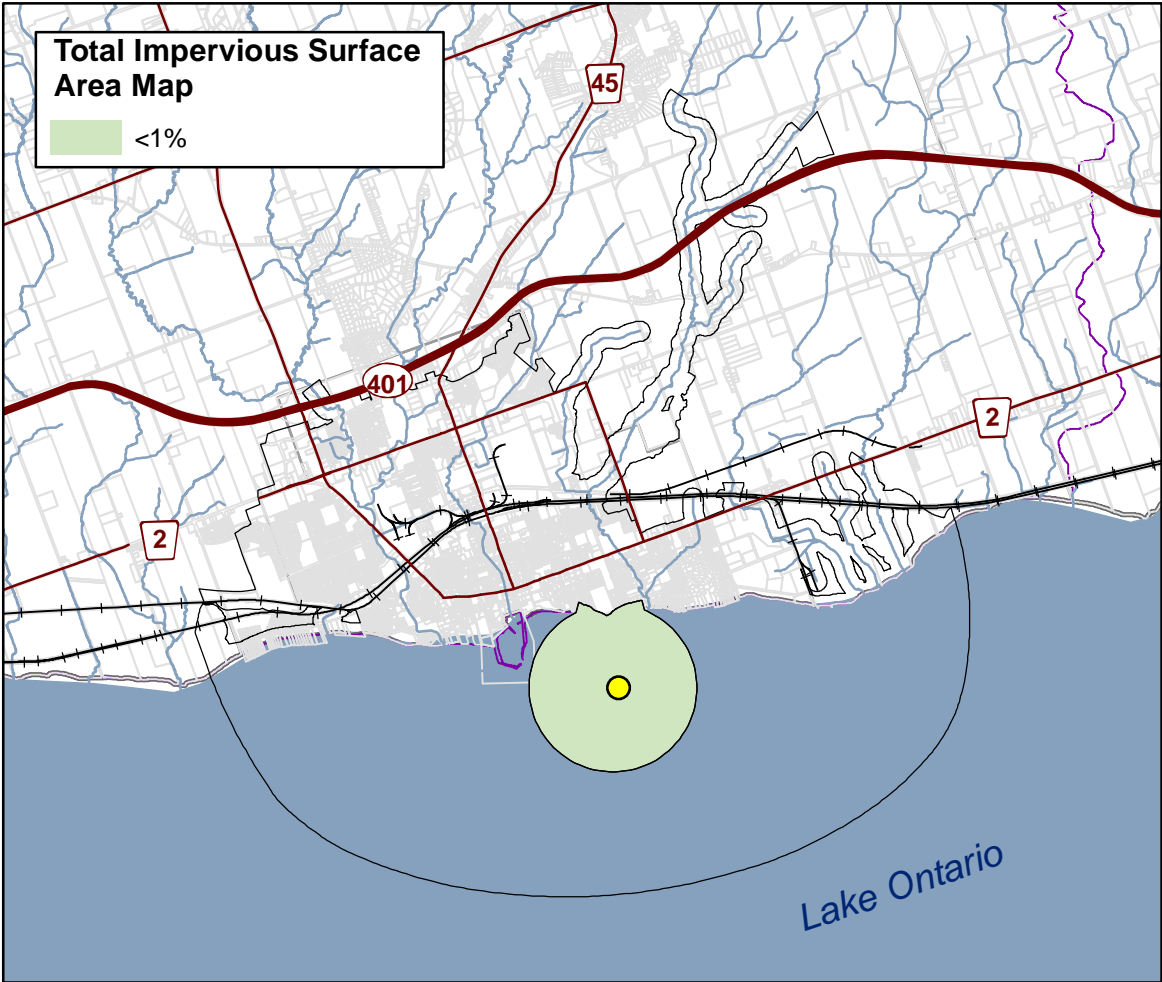
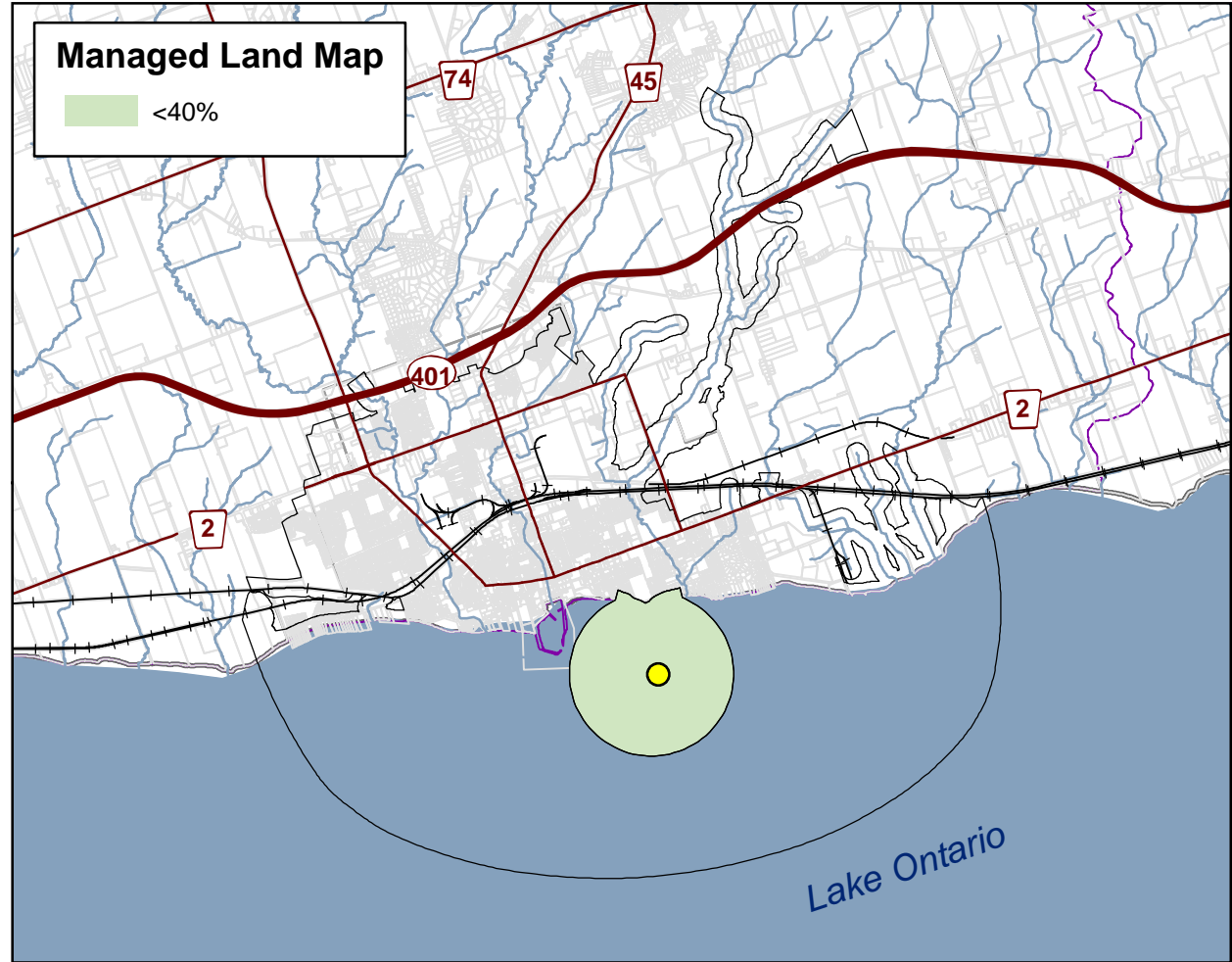
Trent Conservation Coalition Source Protection Region

www.trentsourceprotection.on.ca

This map has been prepared for the purposes of meeting the Provincial requirements under the Clean Water Act, 2006. If it is proposed to use it for another purpose, it would be advisable to first consult with the responsible Conservation Authority.

PRODUCED BY Ganaraska Region Conservation Authority on behalf of the Trent Conservation Coalition Source Protection Committee, August 2010, with data supplied under licence by members of the Ontario Geospatial Data Exchange.



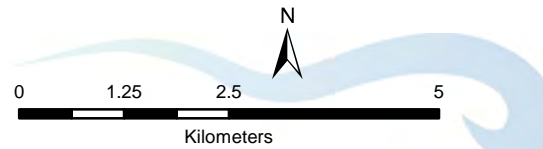


Cobourg Surface Water Supply Ganaraska Region Source Protection Area

Managed Land, Livestock Density & Total Impervious Surface Area

Legend

- Surface Water Intake
- Road
- Highway
- Multi-Lane Highway
- +— Railway
- IPZ 1 and 2
- Watercourse
- Waterbody
- Source Protection Area Boundary
- Property boundary
- Upper and Single Tier Municipality
- Lower Tier Municipality

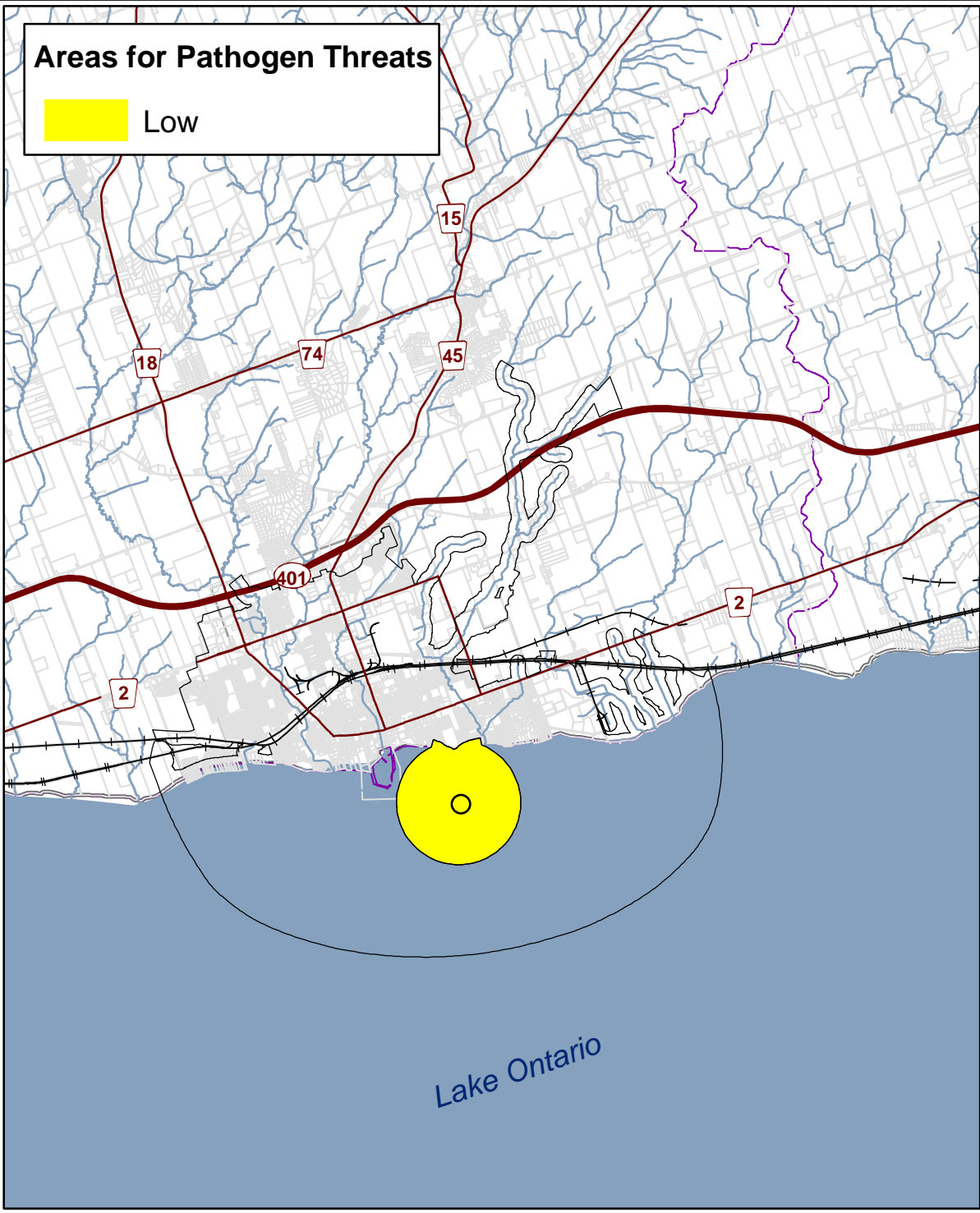
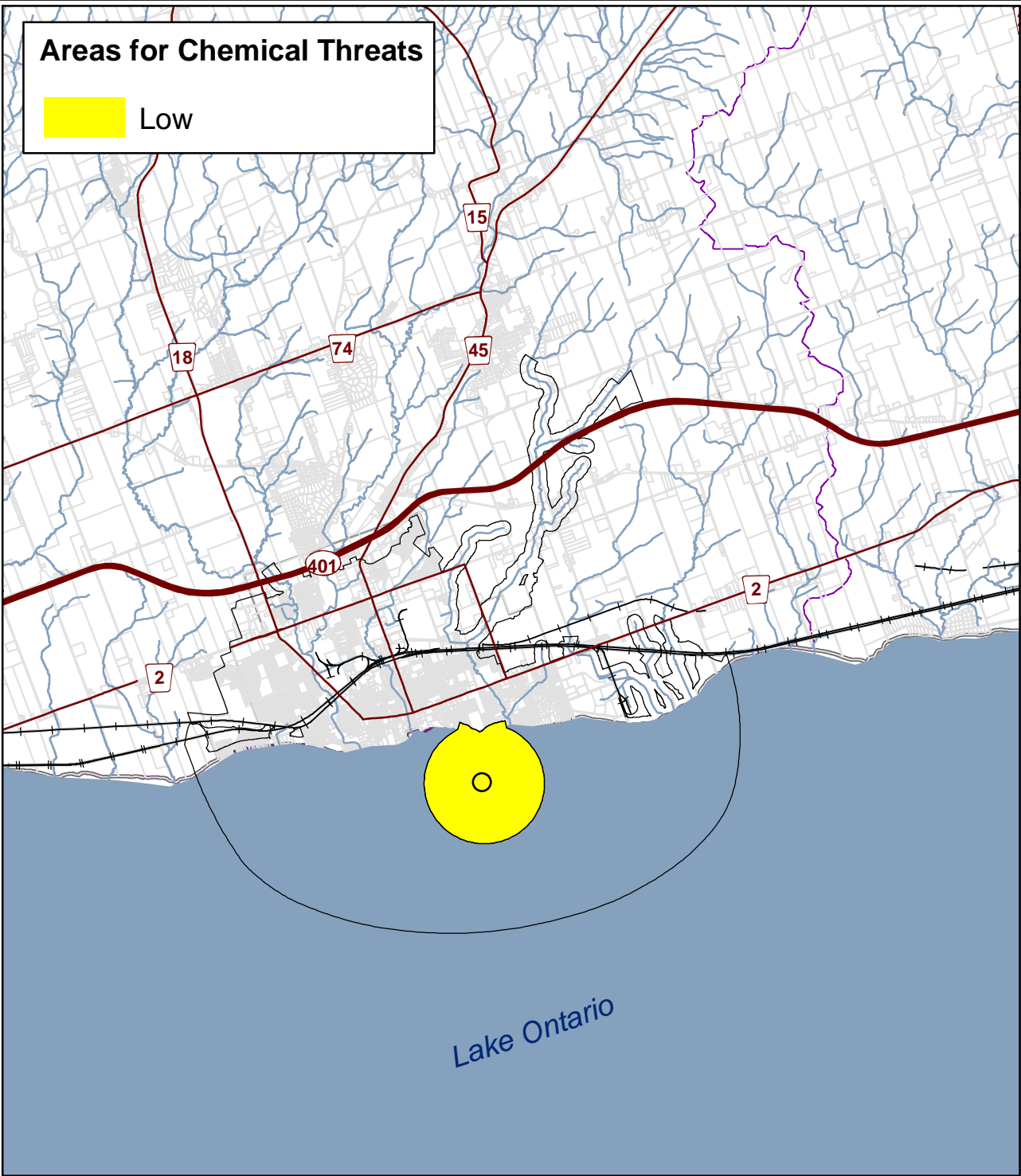


**Trent Conservation Coalition
Source Protection Region**

www.trentsourceprotection.on.ca

This map has been prepared for the purposes of meeting the Provincial requirements under the Clean Water Act, 2006. If it is proposed to use it for another purpose, it would be advisable to first consult with the responsible Conservation Authority.

PRODUCED BY Ganaraska Region Conservation Authority on behalf of the Trent Conservation Coalition Source Protection Committee, March 2011, with data supplied under licence by members of the Ontario Geospatial Data Exchange.

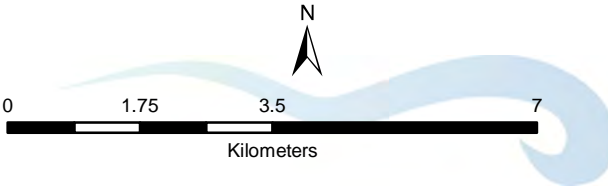


**Cobourg
Surface Water Supply
Ganaraska Region Source
Protection Area**

**Areas of Significant, Moderate
& Low Drinking Water Threats
(Chemical & Pathogen Threats)**

Legend

- Surface Water Intake
- Road
- Highway
- Multi-Lane Highway
- Railway
- IPZ 1 and 2
- Waterbody
- Watercourse
- Property Boundary
- Source Protection Area Boundary
- Upper and Single Tier Municipality
- Lower Tier Municipality



CHEMICAL THREATS			
Area	Provincial Table of Circumstances		
	Significant	Moderate	Low
	-	-	Table 74 (CIP2W ESL) Local Threat - Table 4.4-2

PATHOGEN THREATS			
Area	Provincial Table of Circumstances		
	Significant	Moderate	Low
	-	-	Table 69 (PIP 251)

These tables indicate where chemical and pathogen threats are (or would be for future activities) significant, moderate, or low in the Intake Protection Zone. The table numbers and codes refer to the Provincial Table of Circumstances that list the circumstances under which these threats can be significant, moderate, or low. The Provincial Table of Circumstances can be accessed from: <http://www.ene.gov.on.ca/en/water/cleanwater/provincialtables.php>

**Trent Conservation Coalition
Source Protection Region**

www.trentsourceprotection.on.ca

This map has been prepared for the purposes of meeting the Provincial requirements under the Clean Water Act, 2006. If it is proposed to use it for another purpose, it would be advisable to first consult with the responsible Conservation Authority.

PRODUCED BY Ganaraska Region Conservation Authority on behalf of the Trent Conservation Coalition Source Protection Committee, Oct 2013, with data supplied under licence by members of the Ontario Geospatial Data Exchange.

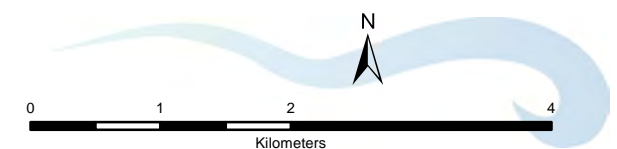
Cobourg Surface Water Supply Ganaraska Region Source Protection Area Intake Protection Zones

Legend

- Surface Water Intake
- Oil Pipeline
- Road
- Highway
- Multi-Lane Highway
- +— Railway
- - - - Contaminant Collector

IPZ

- IPZ 1
- IPZ 2
- Source Protection Area
- Waterbody
- Watercourse
- Property Boundary
- Upper and Single Tier Municipality
- Lower Tier Municipality



**Trent Conservation Coalition
Source Protection Region**

www.trentsourceprotection.on.ca

This map has been prepared for the purposes of meeting the Provincial requirements under the Clean Water Act, 2006. If it is proposed to use it for another purpose, it would be advisable to first consult with the responsible Conservation Authority.

PRODUCED BY Ganaraska Region Conservation Authority on behalf of the Trent Conservation Coalition Source Protection Committee, Oct 2013, with data supplied under licence by members of the Ontario Geospatial Data Exchange.

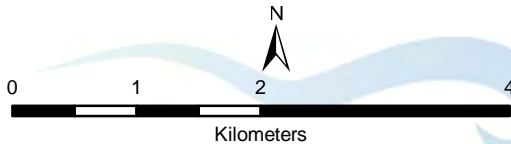
Lake Ontario

Cobourg
Surface Water Supply
Ganaraska Region Source
Protection Area

Location of Significant
Drinking Water Threats

Legend

- Modelled Threats
- Surface Water Intake
- Contaminant Collector
- Oil Pipeline
- Road
- Highway
- Multi-Lane Highway
- Railway
- IPZ 3
- IPZ1
- IPZ2
- Source Protection Area Boundary
- Waterbody
- Watercourse
- Property Boundary
- Upper and Single Tier Municipality
- Lower Tier Municipality

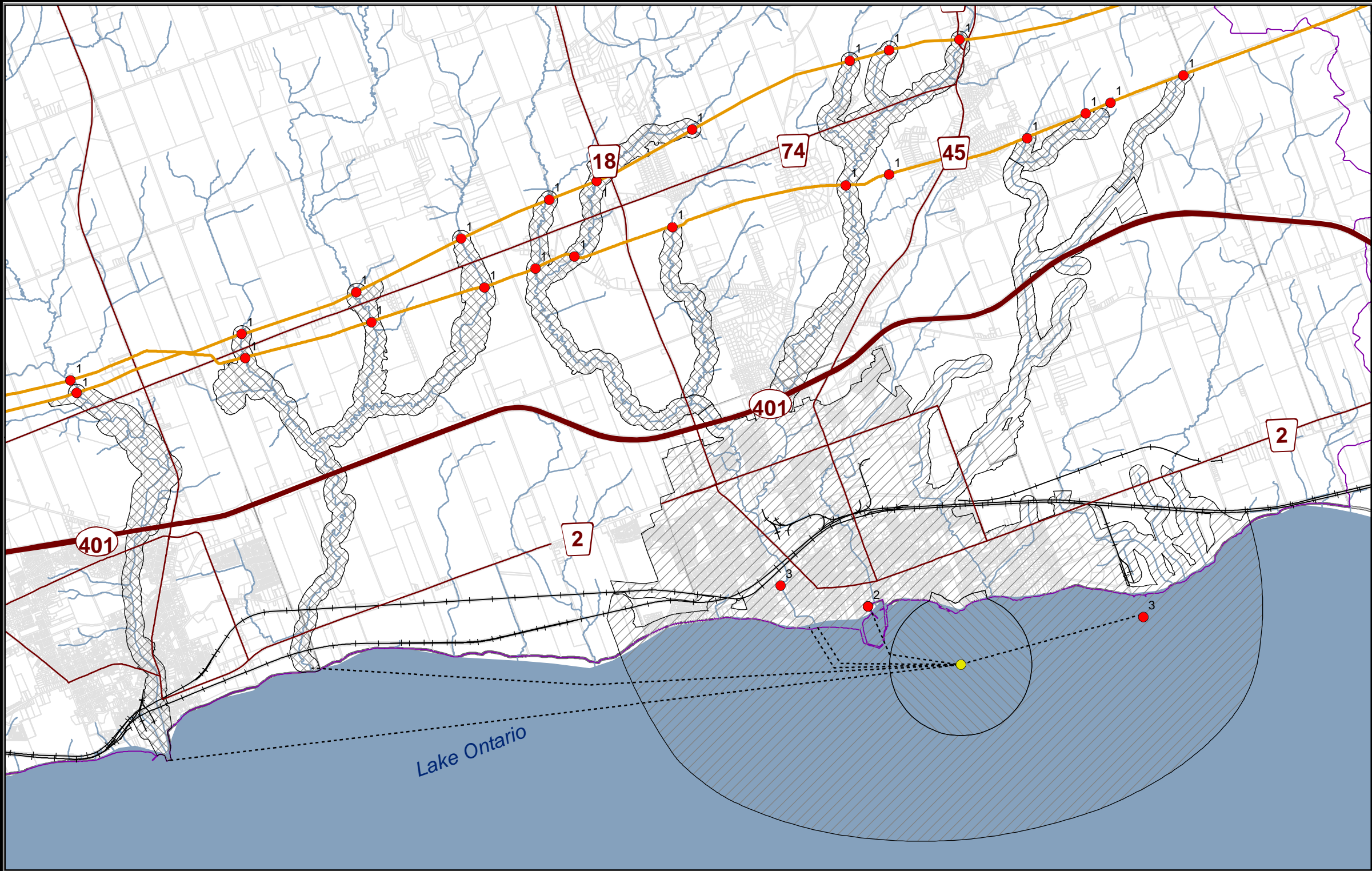


Trent Conservation Coalition
Source Protection Region

www.trentsourceprotection.on.ca

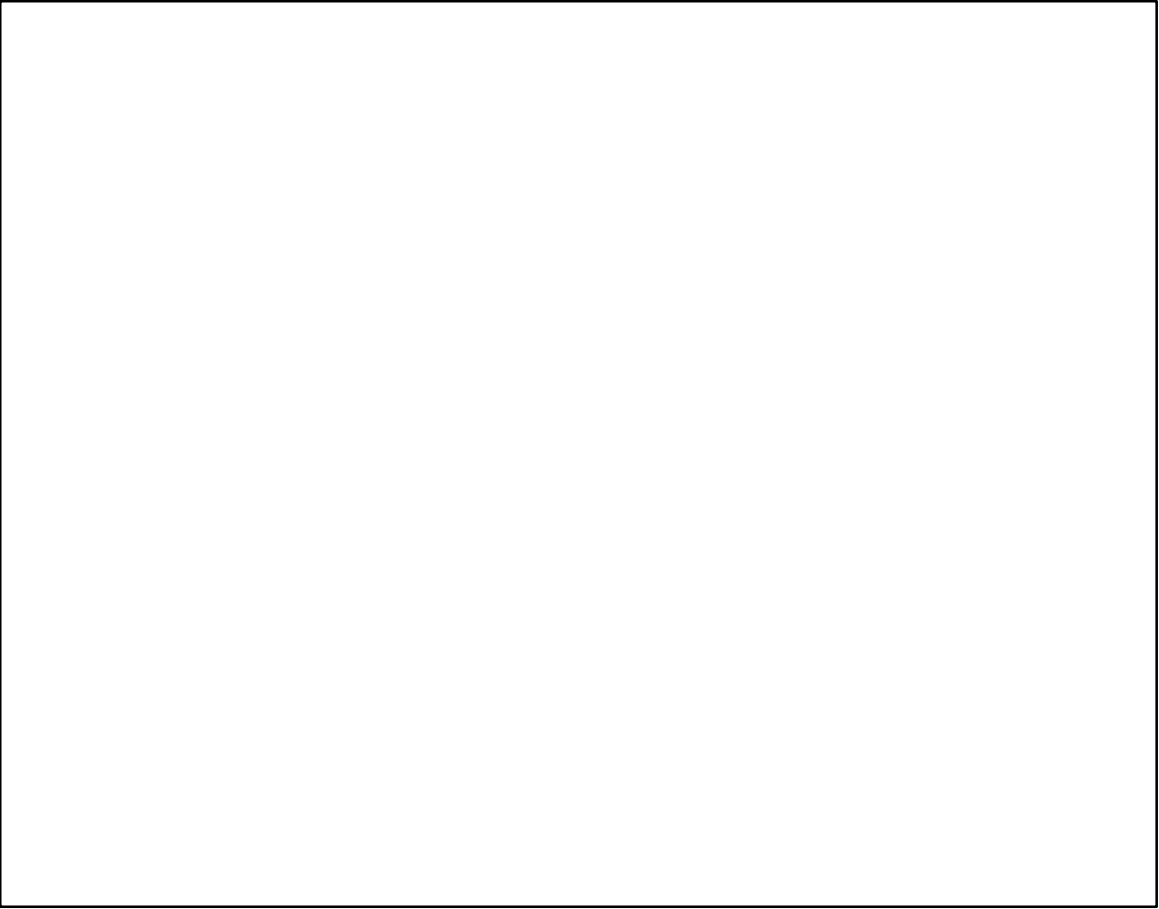
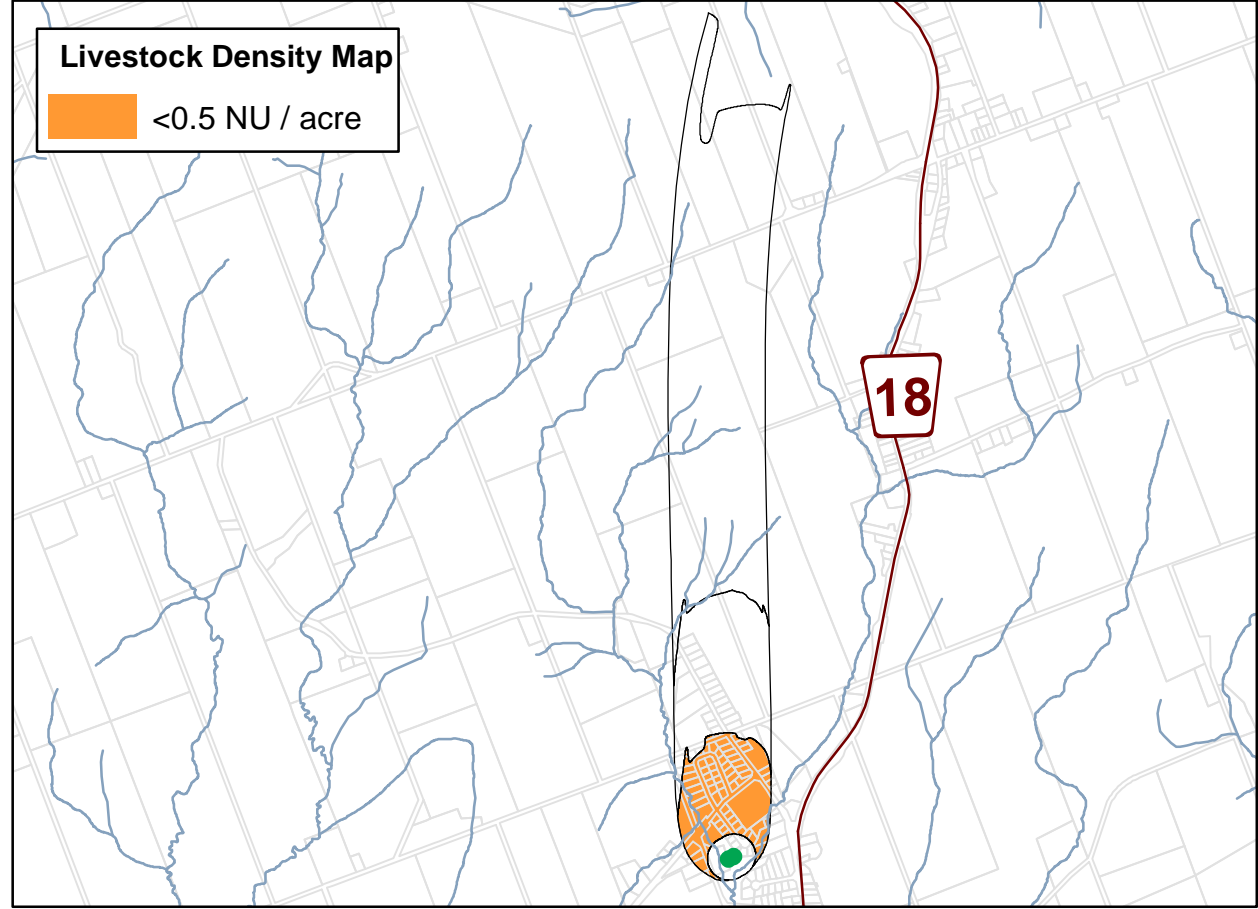
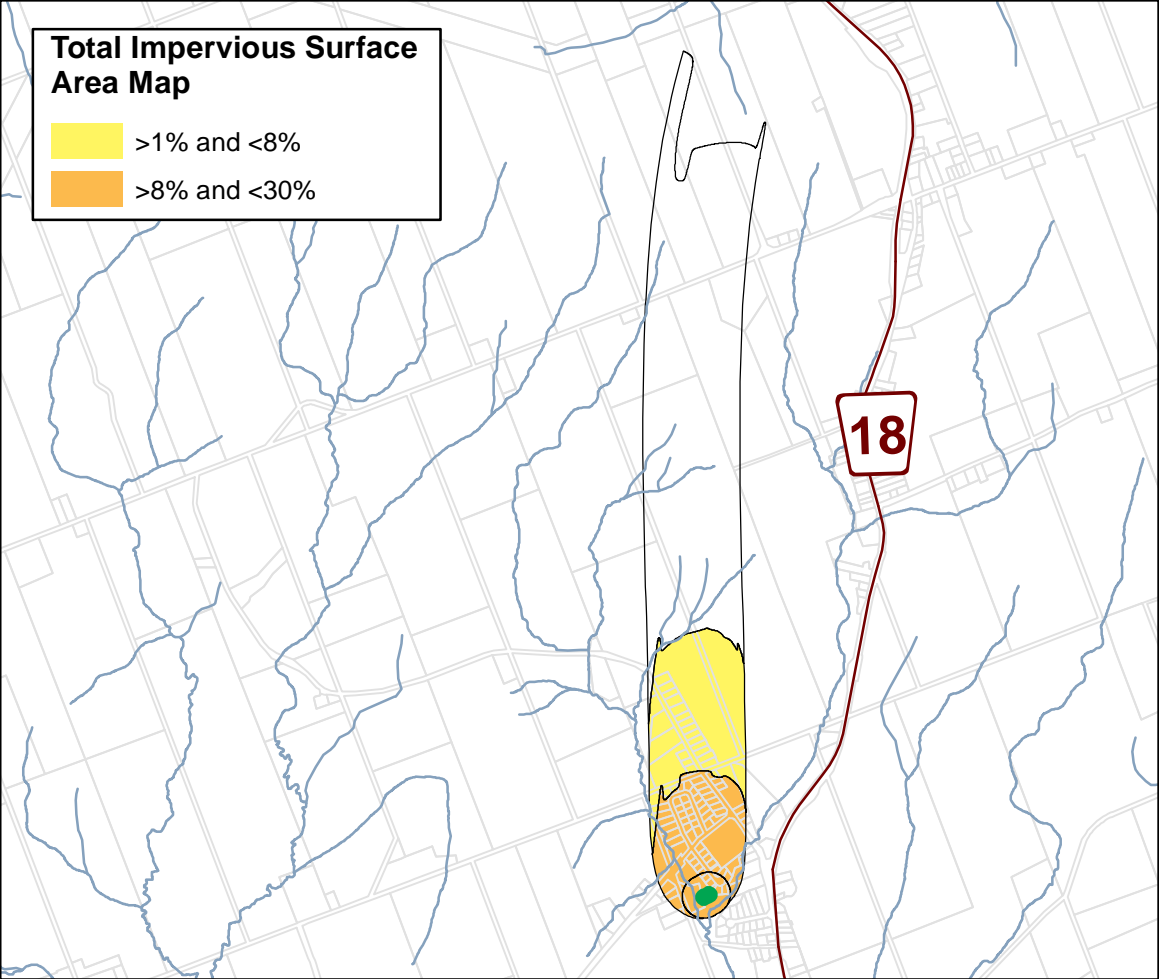
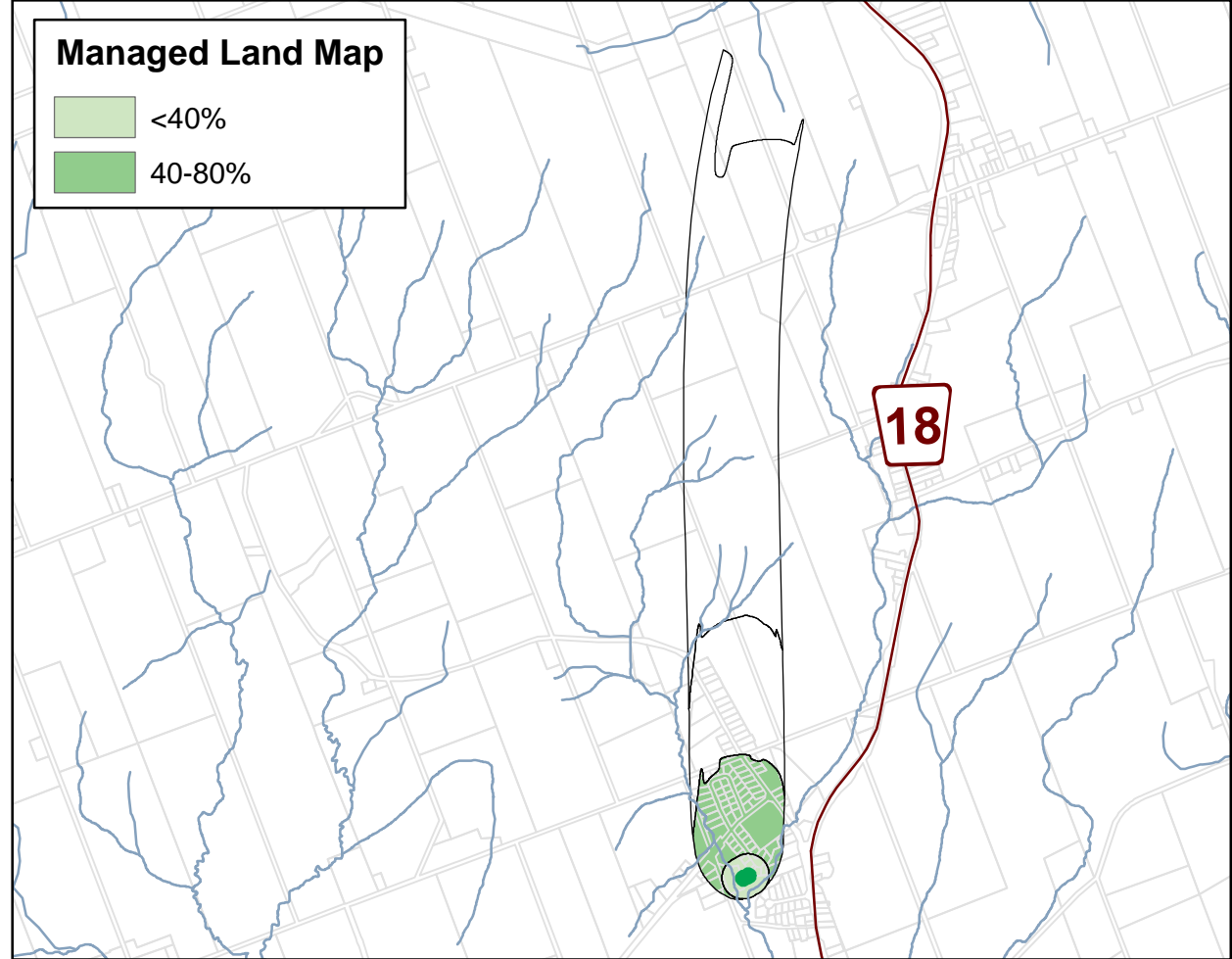
This map has been prepared for the purposes of meeting the Provincial requirements under the Clean Water Act, 2006. If it is proposed to use it for another purpose, it would be advisable to first consult with the responsible Conservation Authority.

PRODUCED BY Ganaraska Region Conservation Authority on behalf of the Trent Conservation Coalition Source Protection Committee, Aug 2014, with data supplied under licence by members of the Ontario Geospatial Data Exchange.



THREATS RELATED TO DRINKING WATER INTAKE PROTECTION ZONE 3	
Significant Threat Location	Description of Local Significant Threat
1	1. The conveyance of oil by way of a pipeline that would be designated as transmitting or distributing "liquid hydrocarbon s", including "crude oil", "condensate", or liquid petroleum products" and not including "natural gas liquids" or "liquefied petroleum gas" within the meaning of the Ontario Regulation 210/01 under the <i>Technical Standards and Safety Act</i> or is subject to the National Energy Board Act. 2. The rupture of a pipeline in an area where the pipeline crosses a body of open water and may result in the presence of BTEX in surface water."
This table identifies the significant drinking water threats within the Intake Protection Zone 3 of the Cobourg Surface Water Supply	

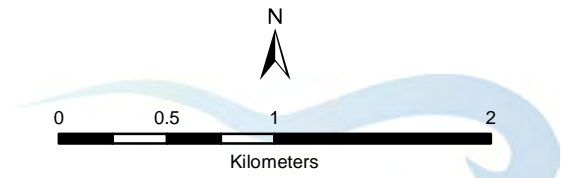
Significant Threat Location	Description of Modelled Threat
2	1. The below grade handling of liquid fuel in relation to its storage at a facility as defined in section 1 of O. Reg. 213/01 (Fuel Oil) made under the <i>Technical Standards and Safety Act, 2000</i> or a facility as defined in section 1 of O. Reg. 217/01 (Liquid Fuels) made under the <i>Technical Standards and Safety Act, 2000</i> , but not including a bulk plant. 2. The quantity of liquid fuel stored is more than 2,500 litres. 3. A spill of the fuel may result in the presence of BTEX in groundwater or surface water.
3	1. The system is a wastewater treatment facility that discharges to surface water through a means other than a designed bypass. 2. A discharge may result in the presence of one or more pathogens in groundwater or surface water.



**Camborne
Well Supply**
**Ganaraska Region Source
Protection Area**
**Managed Land, Livestock
Density & Total Impervious
Surface Area**

Legend

- Municipal Well
- Road
- Highway
- Multi-Lane Highway
- Railway
- Watercourse
- Property boundary
- WHPA
- Source Protection Area Boundary
- Waterbody
- Upper and Single Tier Municipality
- Lower Tier Municipality



**Trent Conservation Coalition
Source Protection Region**
www.trentsourceprotection.on.ca

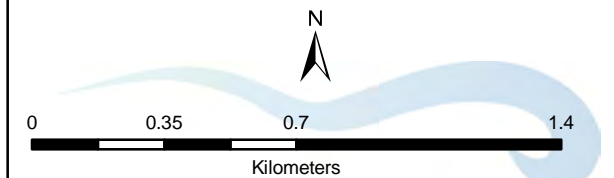
This map has been prepared for the purposes of meeting the Provincial requirements under the Clean Water Act, 2006. If it is proposed to use it for another purpose, it would be advisable to first consult with the responsible Conservation Authority.

PRODUCED BY Ganaraska Region Conservation Authority on behalf of the Trent Conservation Coalition Source Protection Committee, March 2011, with data supplied under licence by members of the Ontario Geospatial Data Exchange.

Orono Well Supply Ganaraska Region Source Protection Area Managed Land, Livestock Density & Total Impervious Surface Area

Legend

- Municipal Well
- Road
- Highway
- Multi-Lane Highway
- +— Railway
- Watercourse
- Property boundary
- Source Protection Area Boundary
- Waterbody
- Upper and Single Tier Municipality
- Lower Tier Municipality



**Trent Conservation Coalition
Source Protection Region**

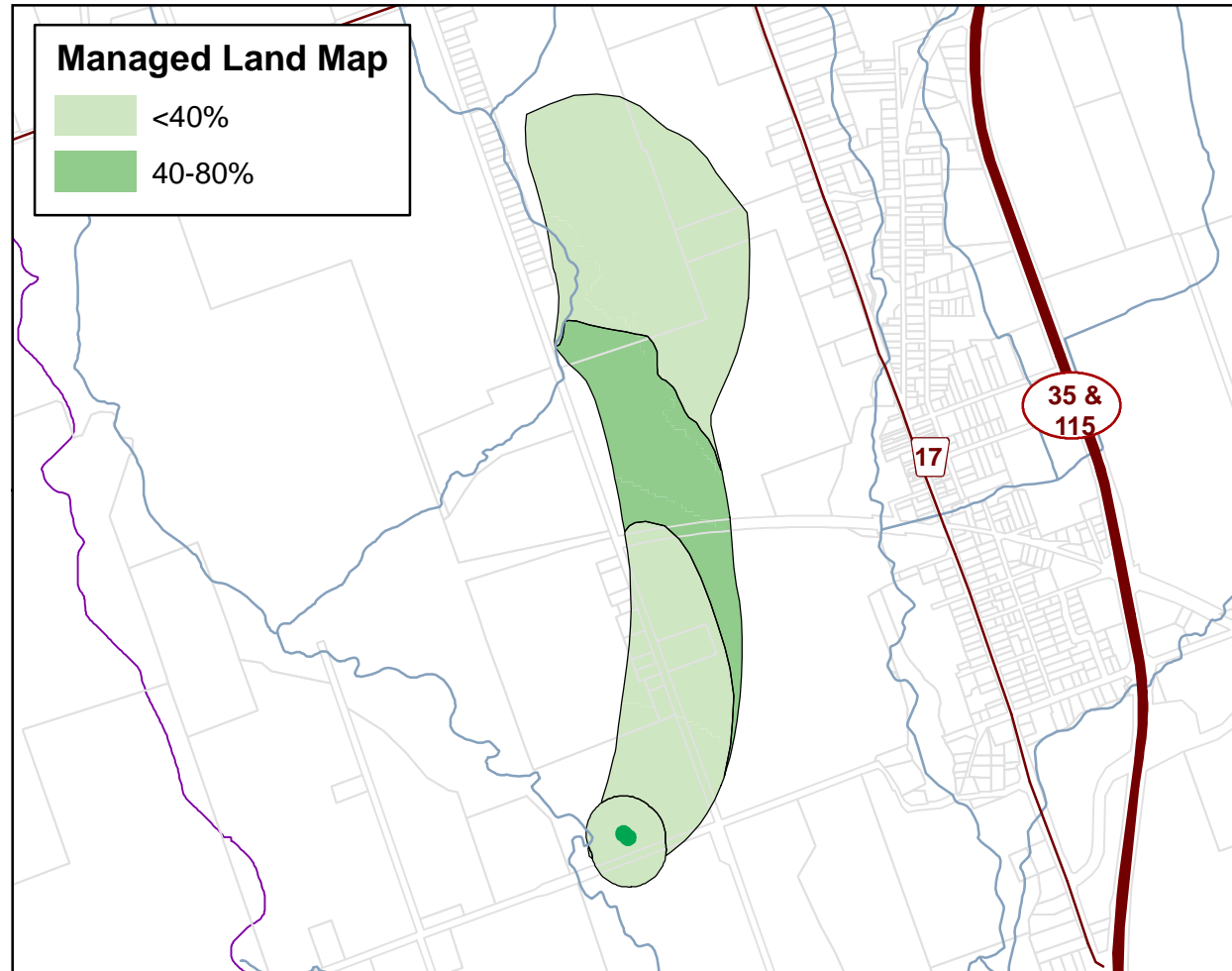
www.trentsourceprotection.on.ca

This map has been prepared for the purposes of meeting the Provincial requirements under the Clean Water Act, 2006. If it is proposed to use it for another purpose, it would be advisable to first consult with the responsible Conservation Authority.

PRODUCED BY Ganaraska Region Conservation Authority on behalf of the Trent Conservation Coalition Source Protection Committee, March 2011, with data supplied under licence by members of the Ontario Geospatial Data Exchange.

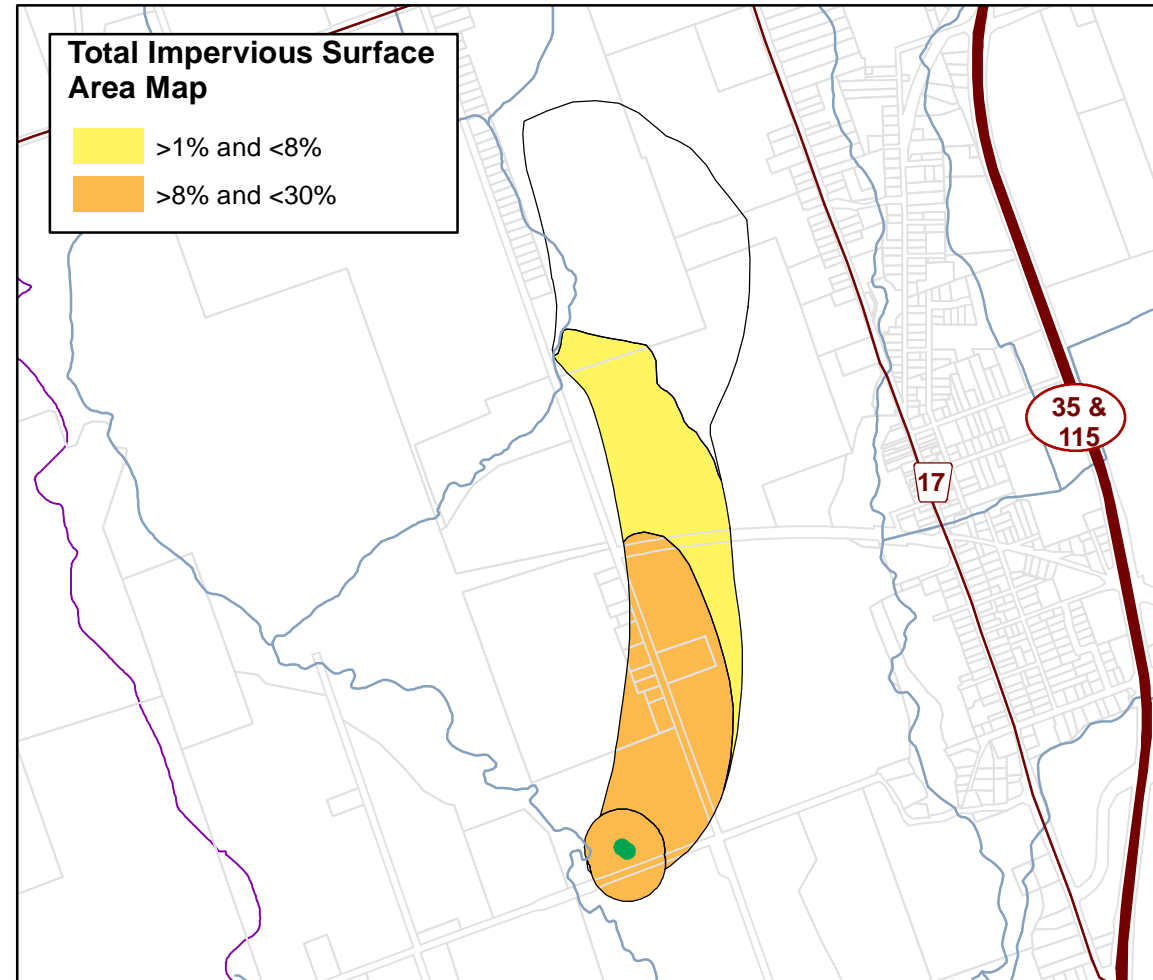
Managed Land Map

- <40%
- 40-80%



Total Impervious Surface Area Map

- >1% and <8%
- >8% and <30%



Livestock Density Map

- <0.5 NU / acre

