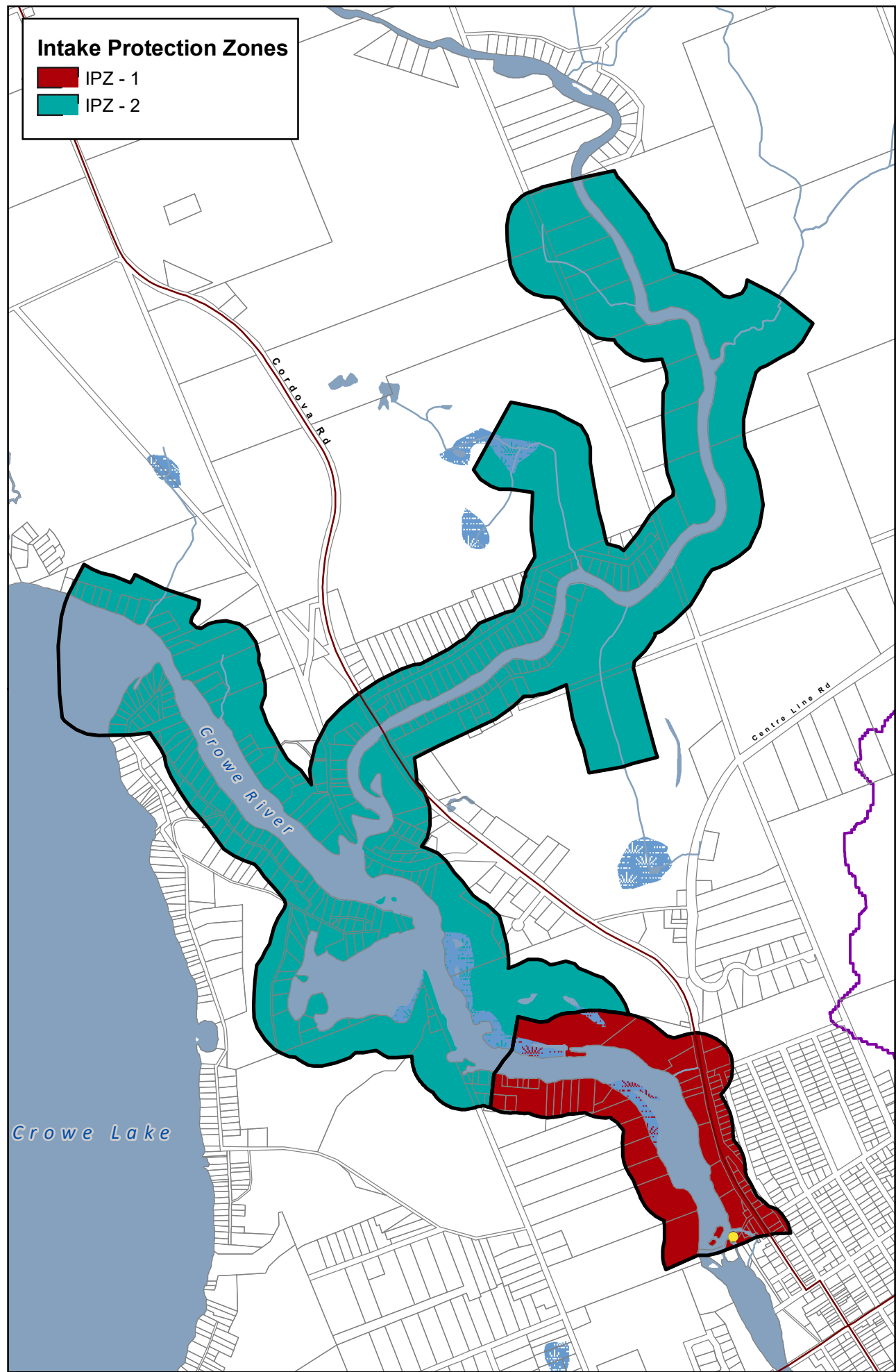
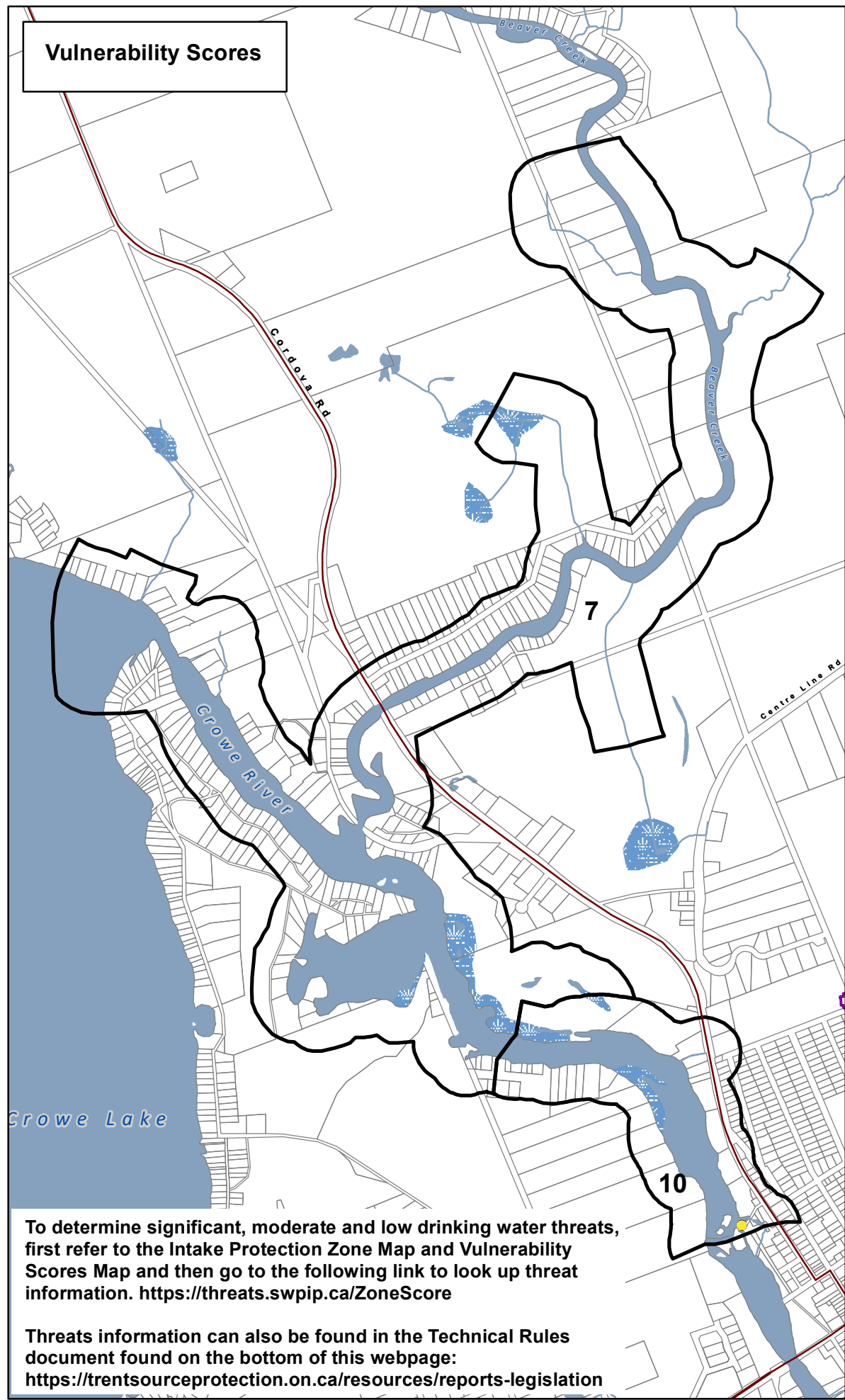


Intake Protection Zones

- IPZ - 1
- IPZ - 2



Vulnerability Scores



To determine significant, moderate and low drinking water threats, first refer to the Intake Protection Zone Map and Vulnerability Scores Map and then go to the following link to look up threat information. <https://threats.swpip.ca/ZoneScore>

Threats information can also be found in the Technical Rules document found on the bottom of this webpage: <https://trentsourceprotection.on.ca/resources/reports-legislation>

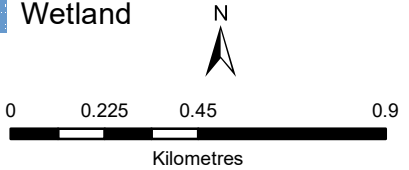


Marmora Municipal Surface Water System

Crowe Valley Source Protection Area

Intake Protection Zones & Vulnerability Scores (IPZ 1 & 2)

- Legend**
- Surface Water Intake
 - Railway
 - Watercourse
 - Main Road
 - Highway
 - Multi Lane Highway
 - Property Boundary
 - Source Protection Region
 - Source Protection Area
 - Upper Tier Municipality
 - Lower and Single Tier Municipality
 - Waterbody
 - Wetland



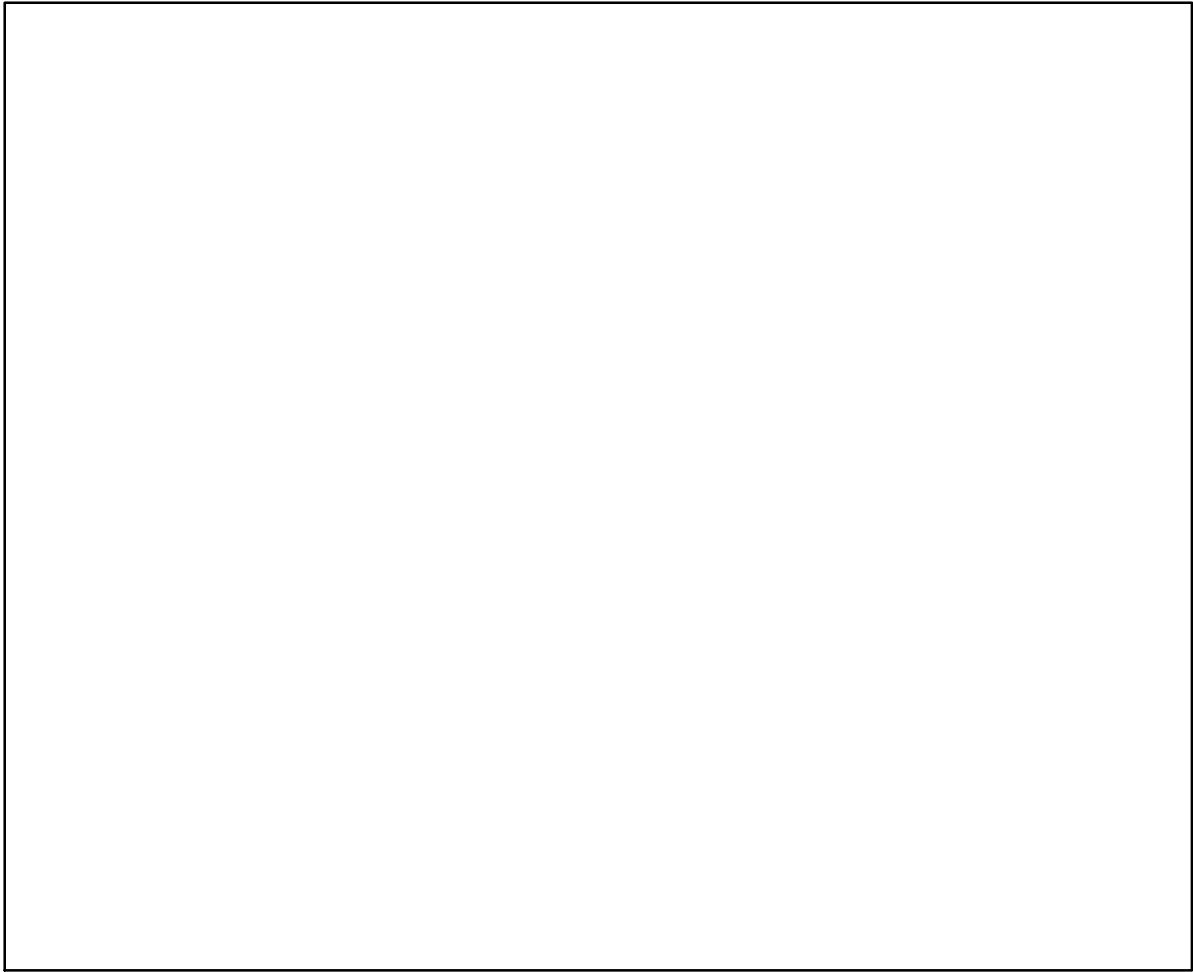
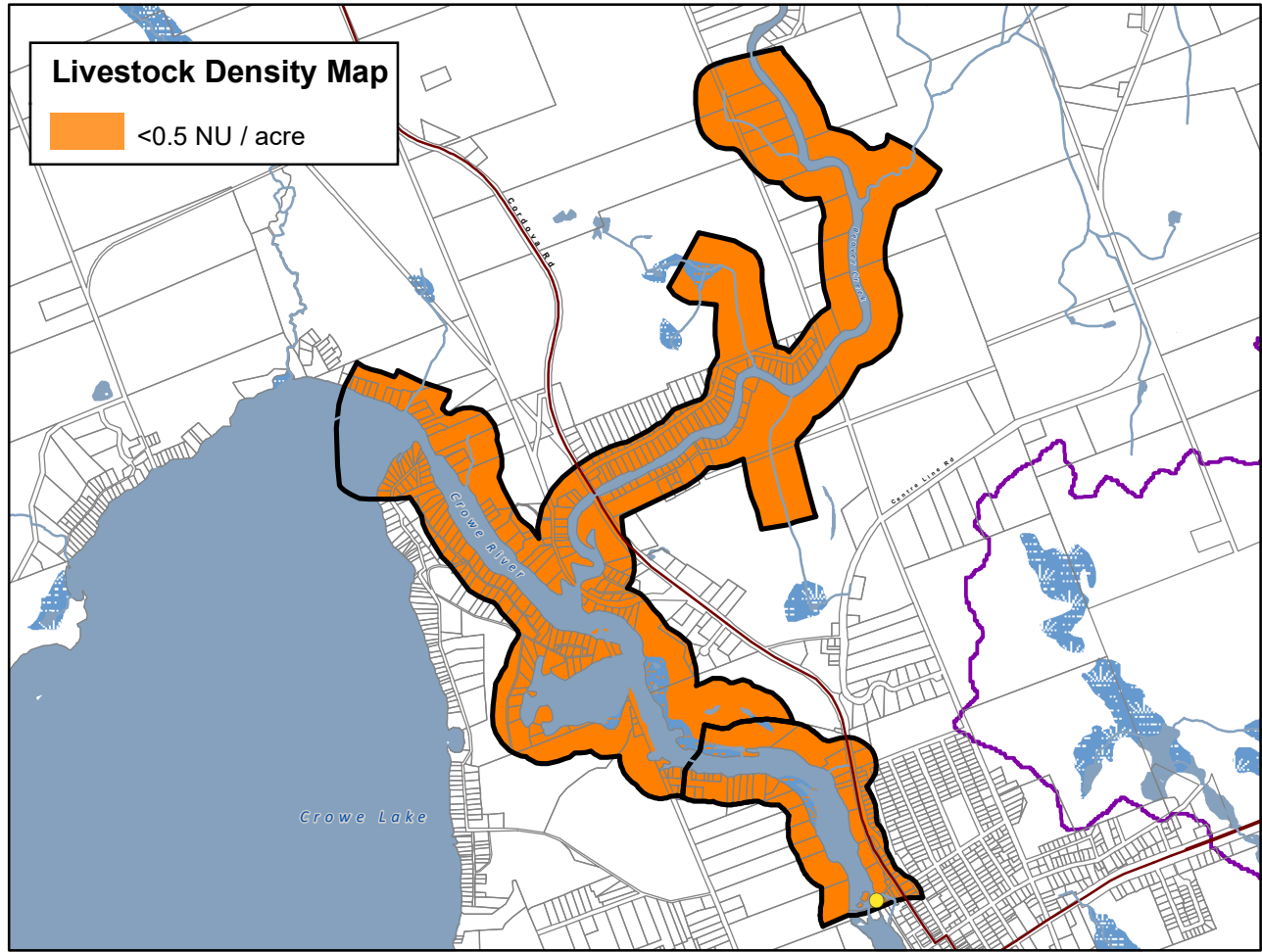
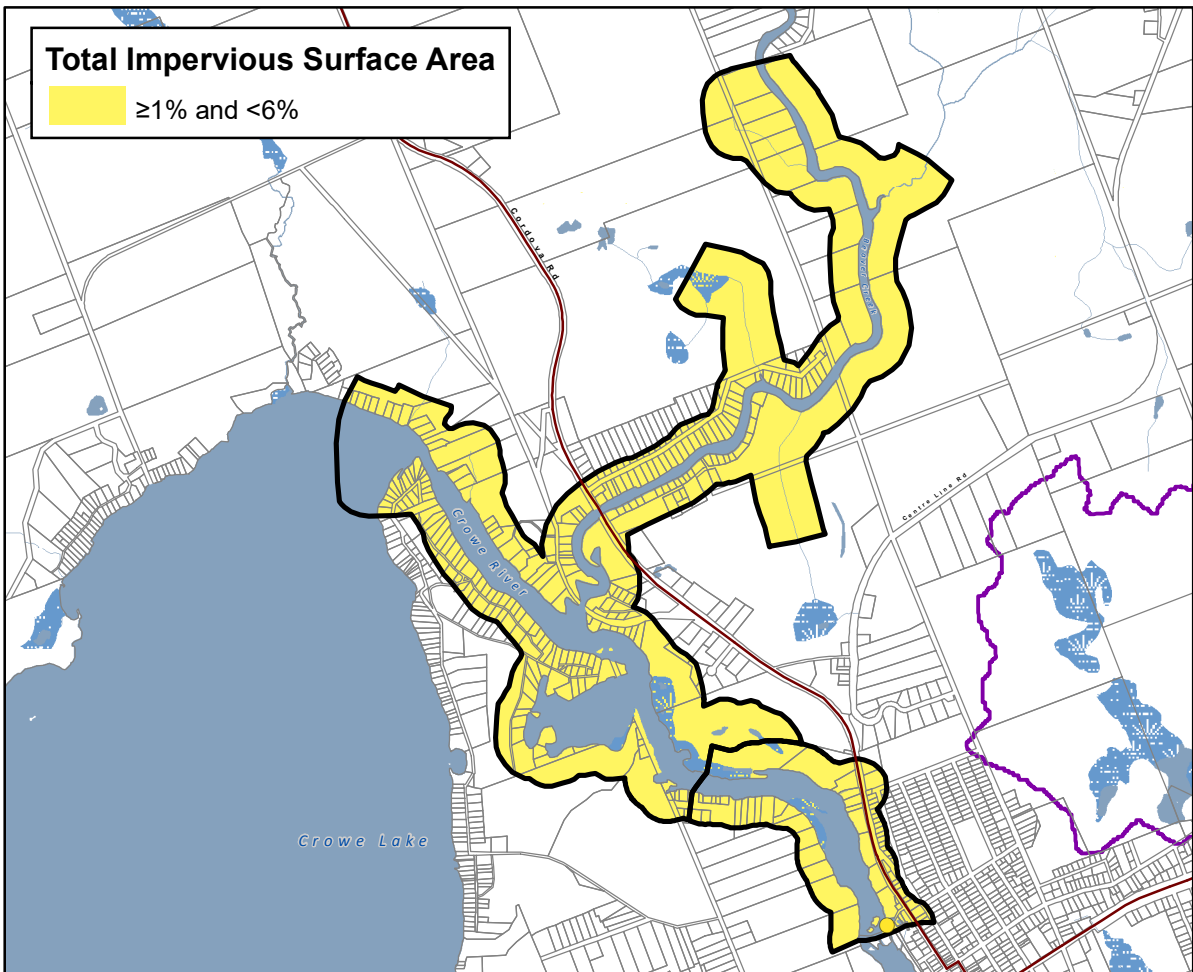
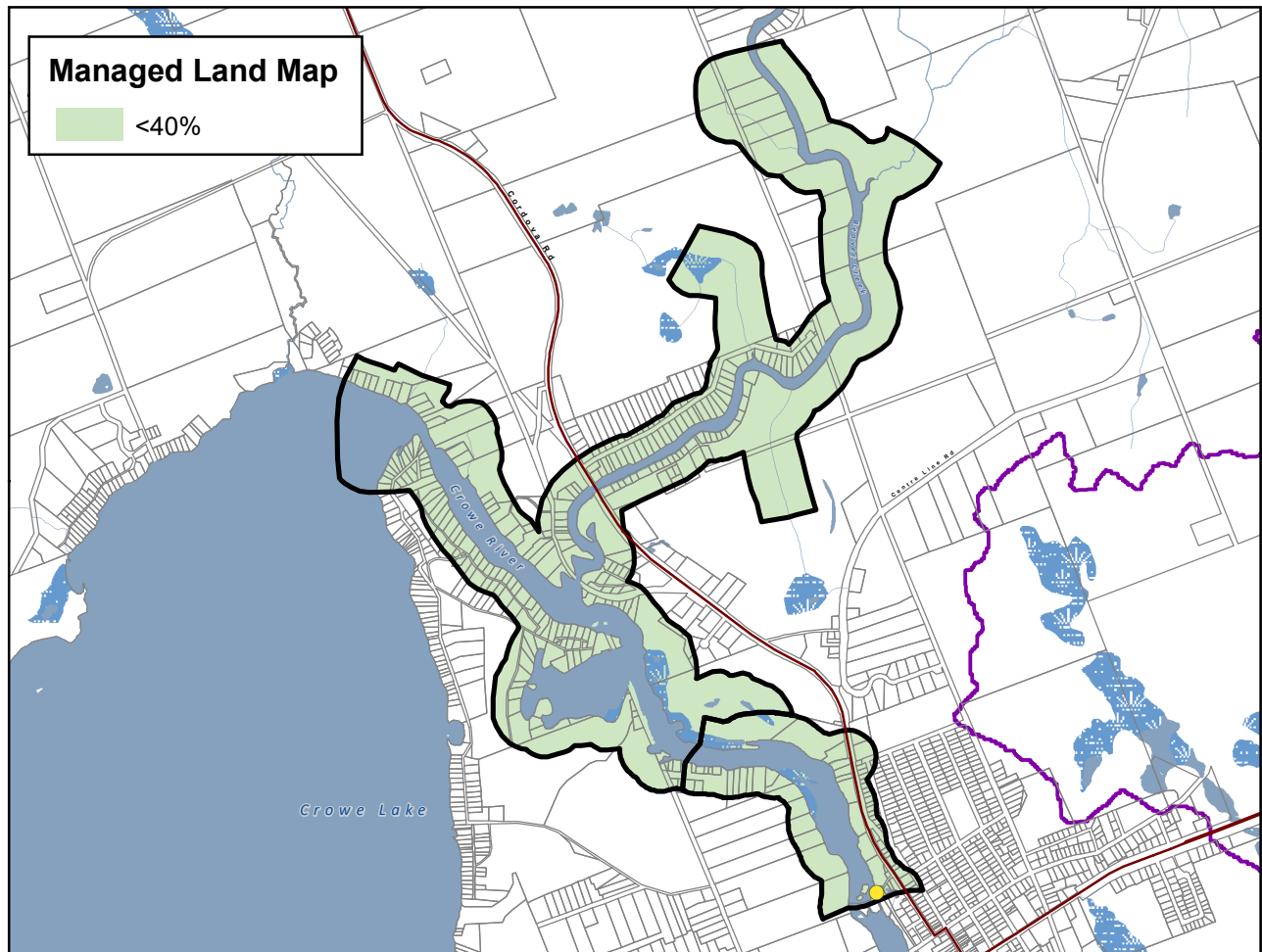
Trent Conservation Coalition Source Protection Region
www.trentsourceprotection.on.ca

This map has been prepared for the purpose of meeting the provincial requirements under the Clean Water Act, 2006. If it is proposed to use it for another purpose, it would be advisable to first consult with the responsible conservation authority.

PRODUCED BY Lower Trent Conservation on behalf of the Trent Conservation Coalition Source Protection Committee, March 2011.
 (Updated Jan 2025), with data supplied under licence by members of the Ontario Geospatial Data Exchange.

Waterbodies and watercourses located within the extent of an intake protection zone are included in that zone.

Ontario
 Made possible through the support of the Government of Ontario

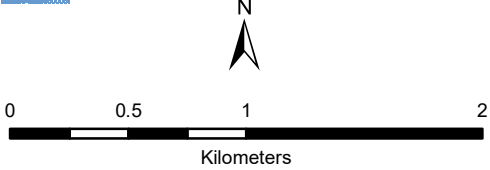


**Marmora
Municipal Surface
Water System
Crowe Valley Source
Protection Area**

**Managed Land, Livestock
Density & Total
Impervious Surface Area**

Legend

- Surface Water Intake
- +— Railway
- Watercourse
- Main Road
- Highway
- Multi Lane Highway
- Property Boundary
- Source Protection Region
- Source Protection Area
- Lower Tier Municipality
- Upper and Single Tier Municipality
- Intake Protection Zones
- Waterbody
- Wetland

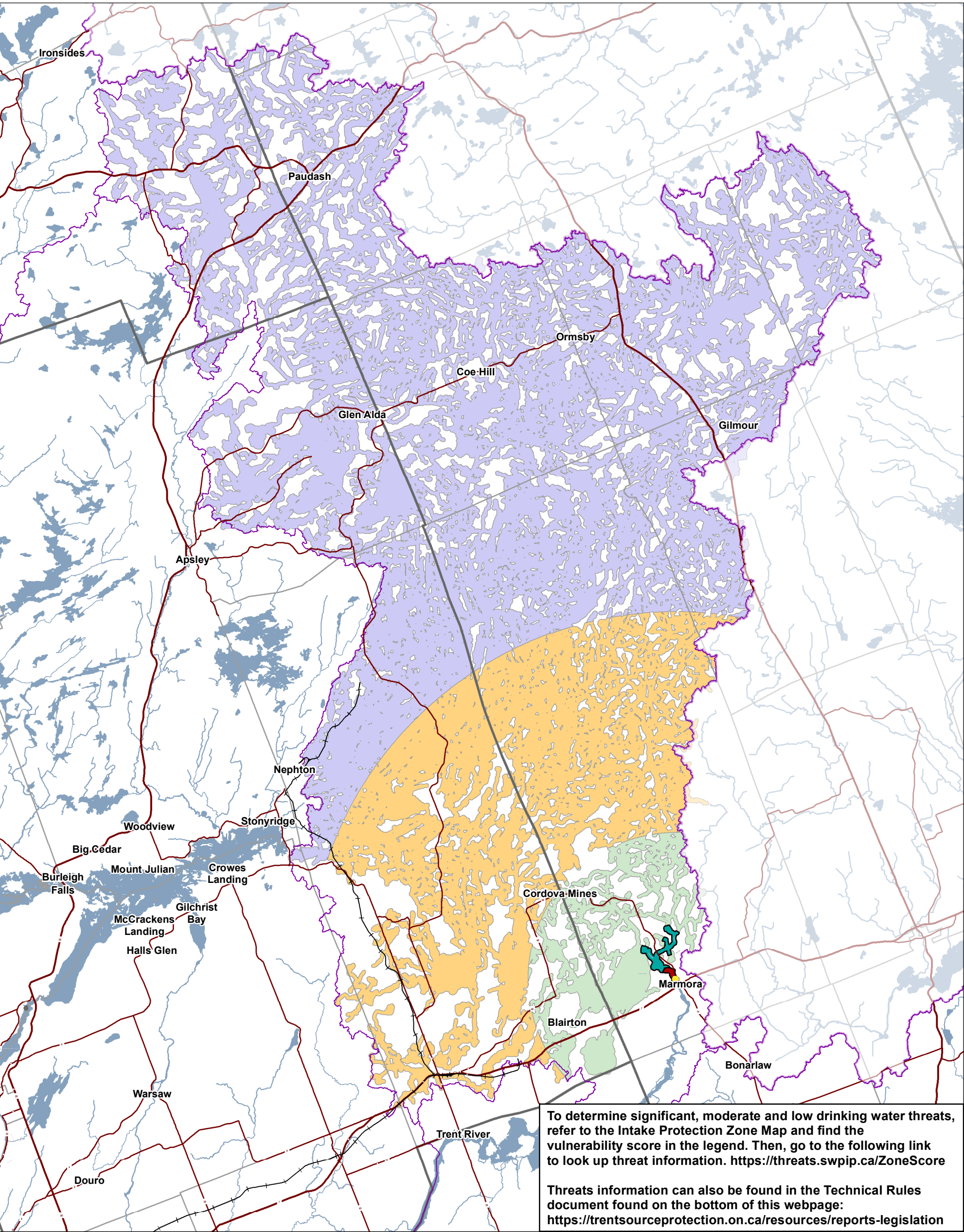


**Trent Conservation Coalition
Source Protection Region**

www.trentsourceprotection.on.ca

This map has been prepared for the purpose of meeting the provincial requirements under the Clean Water Act, 2006. If it is proposed to use it for another purpose, it would be advisable to first consult with the responsible conservation authority.

PRODUCED BY Lower Trent Conservation on behalf of the Trent Conservation Coalition Source Protection Committee, March 2011 (Updated November 2022), with data supplied under licence by members of the Ontario Geospatial Data Exchange.



This map has been prepared for the purpose of meeting the provincial requirements under the Clean Water Act, 2006. If it is proposed to use it for another purpose, it would be advisable to first consult with the responsible conservation authority.

PRODUCED BY Lower Trent Conservation on behalf of the Trent Conservation Coalition Source Protection Committee, March 2011 (Updated July 2016), with data supplied under licence by members of the Ontario Geospatial Data Exchange.

Waterbodies and watercourses located within the extent of an intake protection zone are included in that zone.

Ontario
Made possible through the support of the Government of Ontario

- Legend

●

 Surface Water Intake

—

 Railway

—

 Watercourse

—

 Main Road

—

 Highway

—

 Multi Lane Highway

—

 Source Protection Region

—

 Source Protection Areas

—

 Upper and Single Tier Municipality

—

 Lower Tier Municipality

—

 Waterbody
- Intake Protection Zones

■

 IPZ-1

■

 IPZ-2

■

 IPZ-3a (Vulnerability Score = 5)

■

 IPZ-3b (Vulnerability Score = 4)

■

 IPZ-3c (Vulnerability Score = 3)

