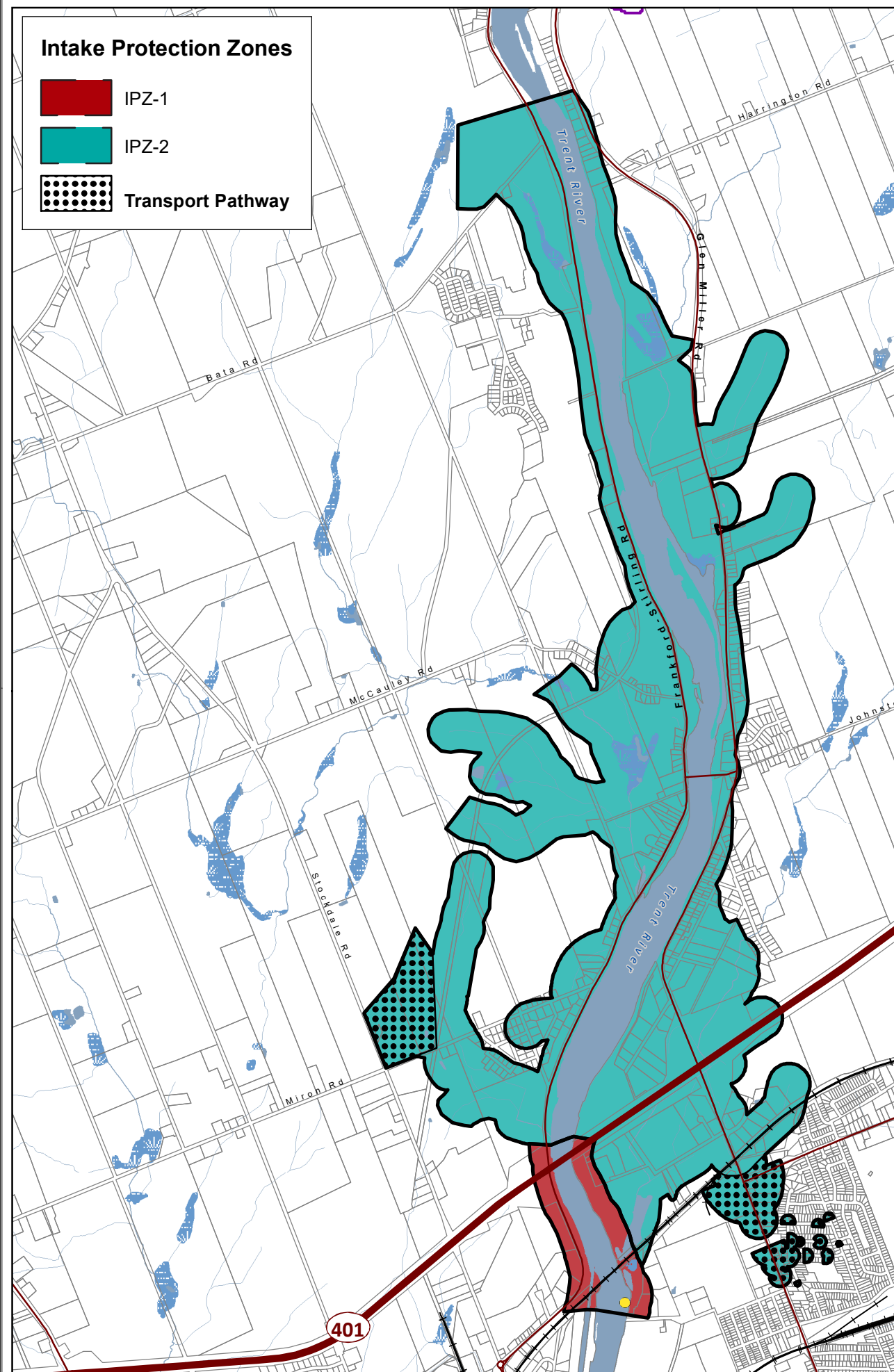
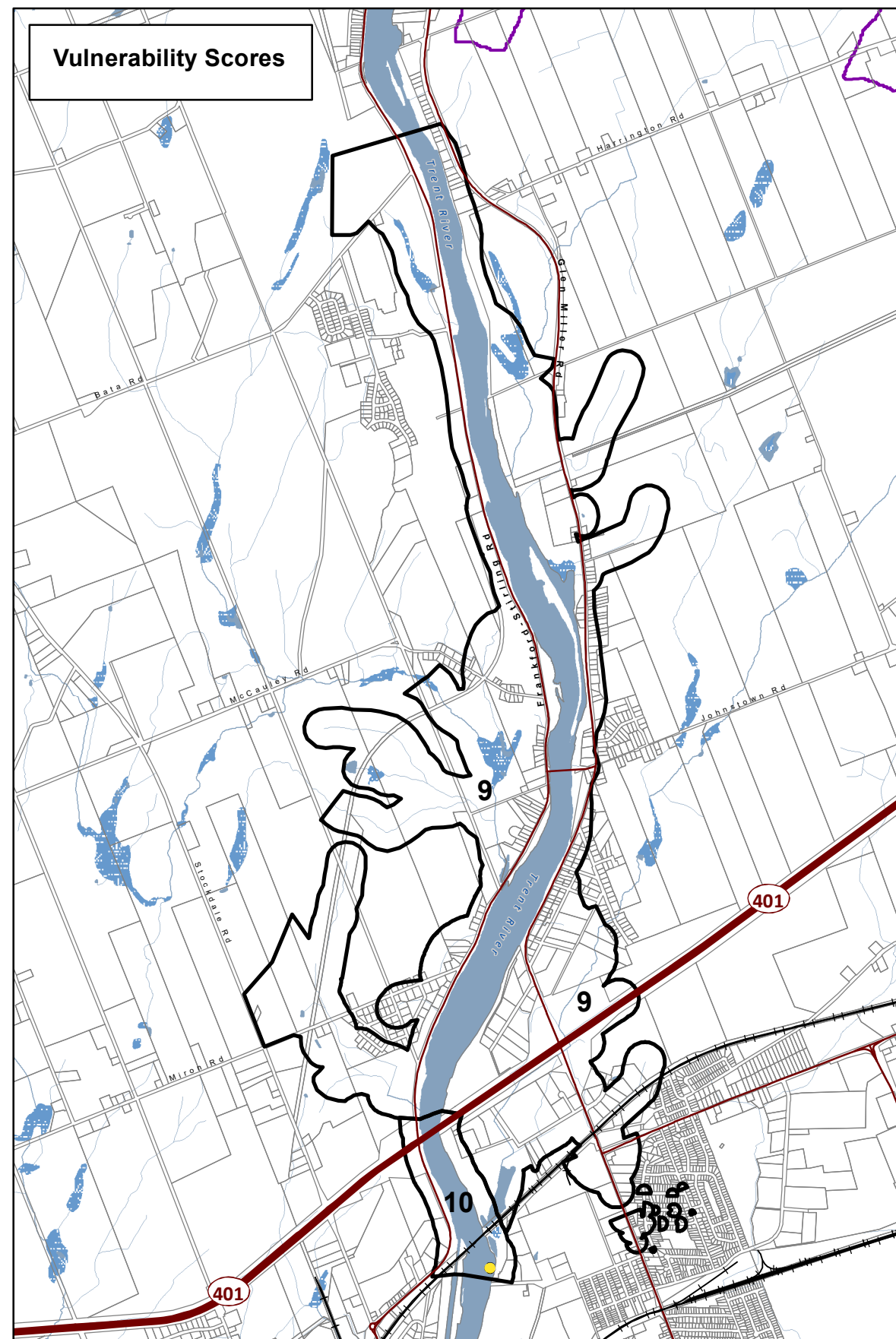


Intake Protection Zones

- IPZ-1
- IPZ-2
- Transport Pathway



Vulnerability Scores



To determine significant, moderate and low drinking water threats, first refer to the Intake Protection Zone Map and the Vulnerability Scores Map and then go to the following link to look up threat information. <https://threats.swpip.ca/ZoneScore>

Threats information can also be found in the Technical Rules document found on the bottom of this webpage: <https://trentsourceprotection.on.ca/resources/reports-legislation>

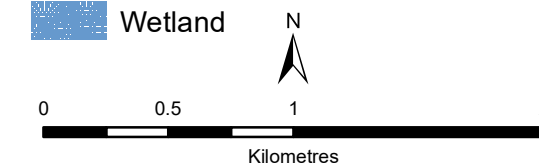
Trenton Municipal Surface Water System

Lower Trent Source Protection Area

Intake Protection Zones & Vulnerability Scores (IPZ 1 & 2)

Legend

- Surface Water Intake
- ++ Railway
- Watercourse
- Main Road
- Highway
- Multi Lane Highway
- Property Boundary
- Source Protection Region
- Source Protection Area
- Upper and Single Tier Municipality
- Lower Tier Municipality
- Waterbody
- Wetland



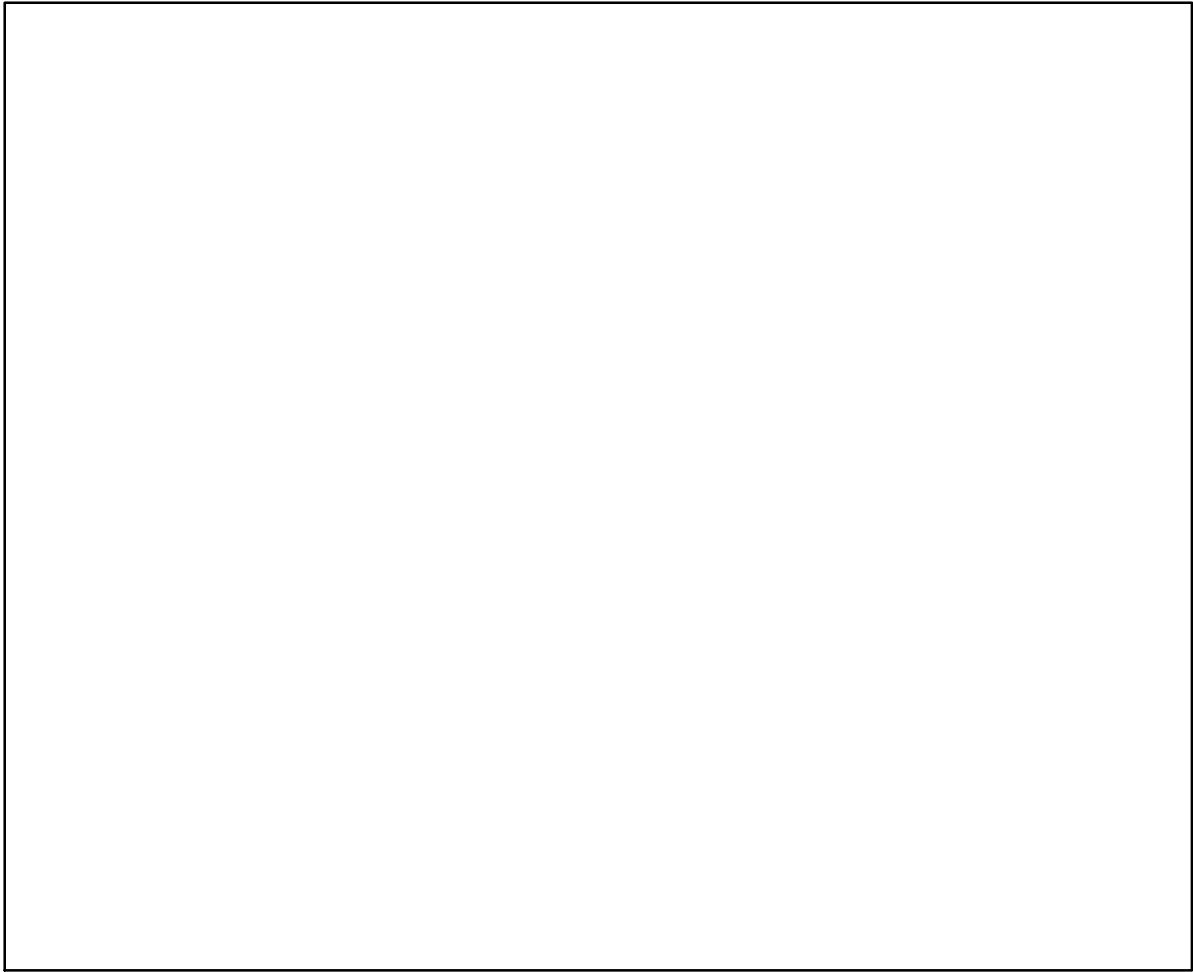
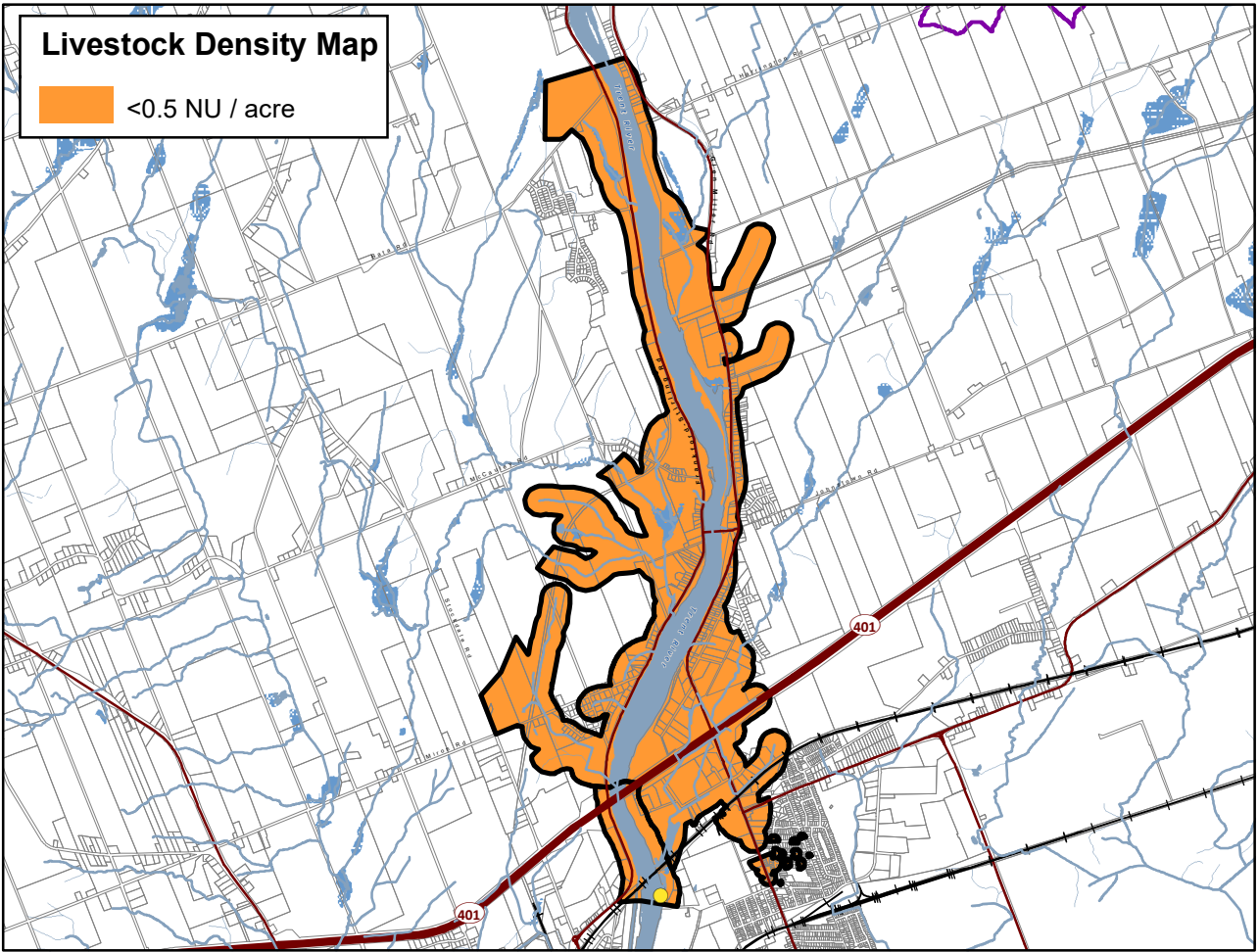
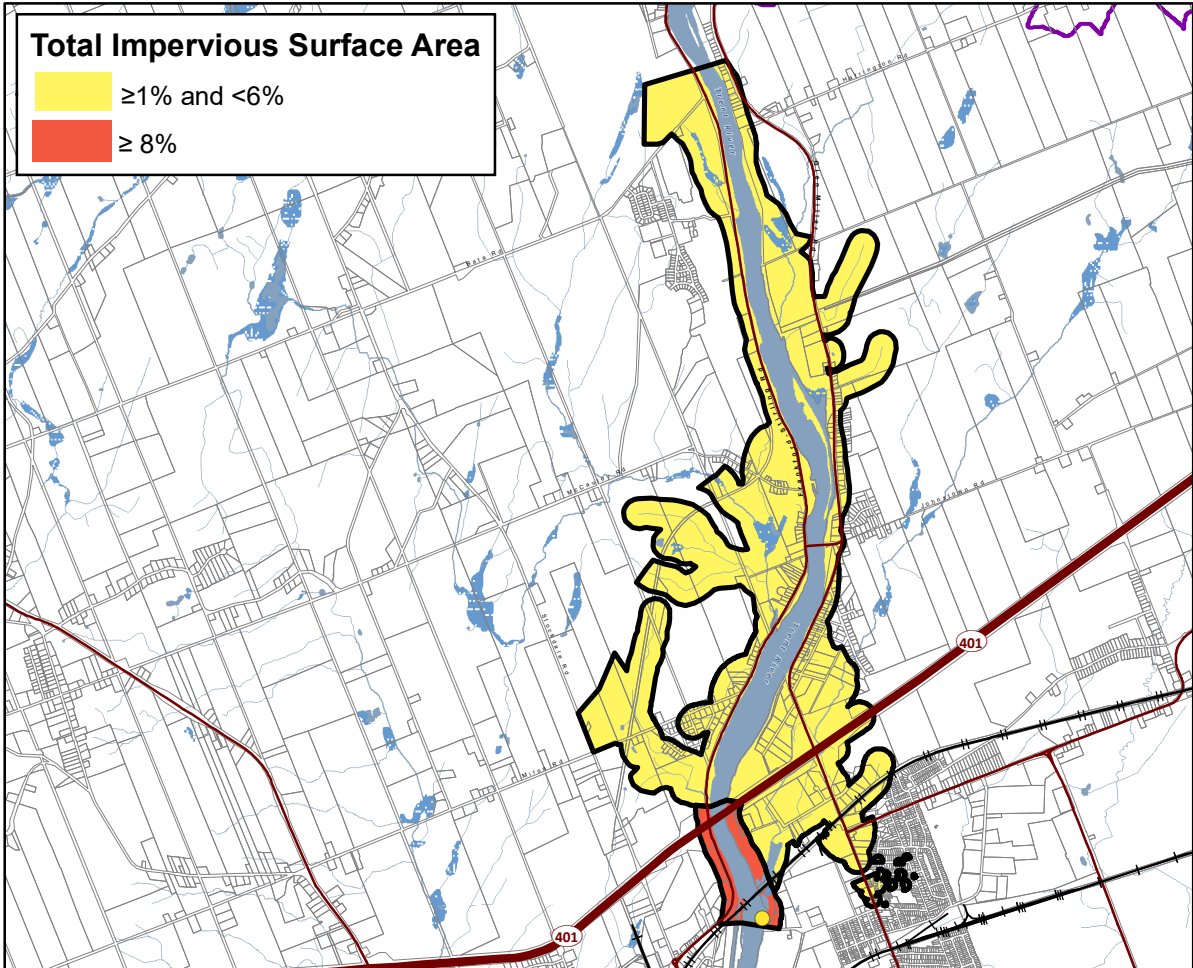
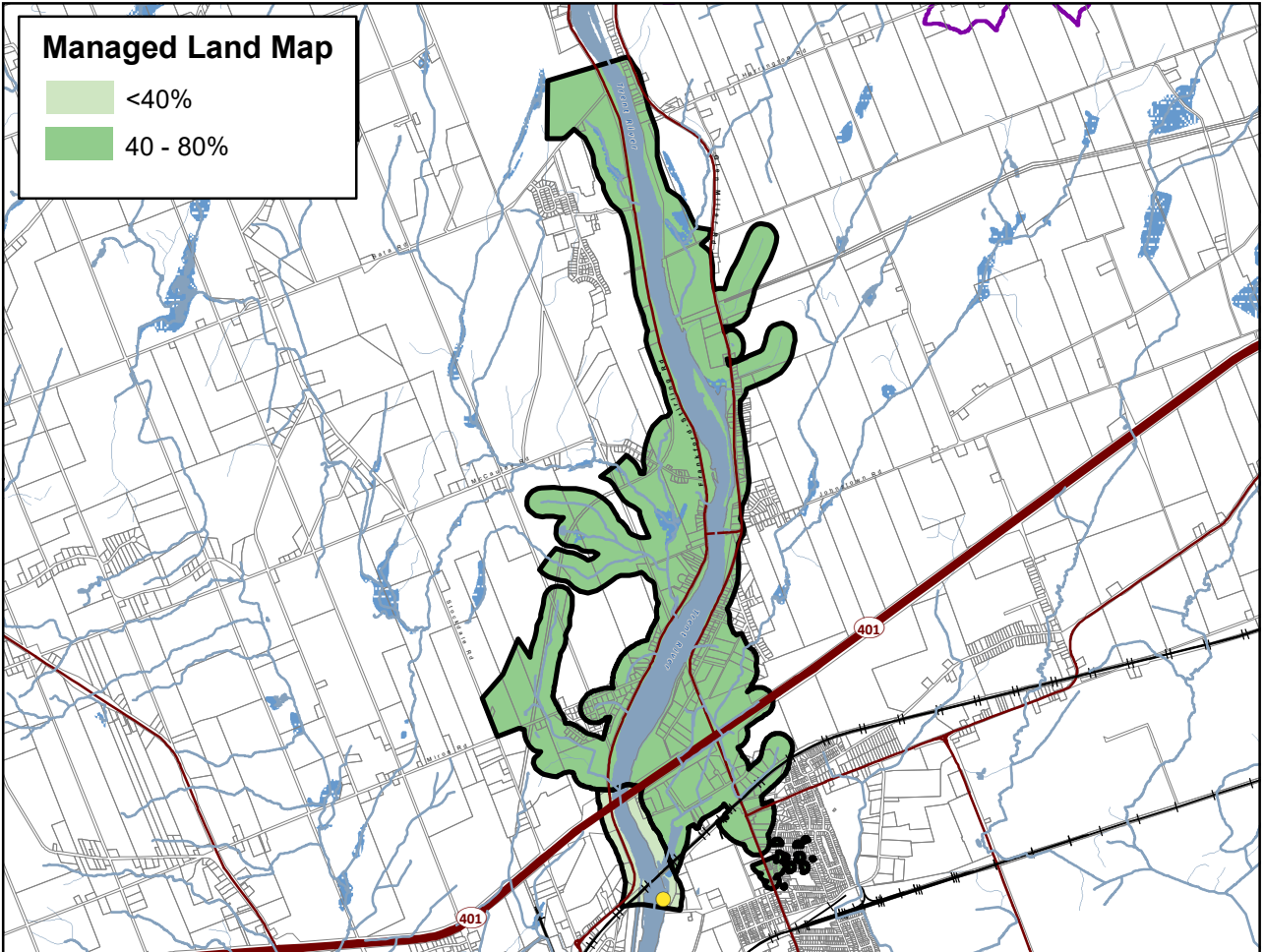
Trent Conservation Coalition Source Protection Region

www.trentsourceprotection.on.ca

This map has been prepared for the purpose of meeting the provincial requirements under the Clean Water Act, 2006. If it is proposed to use it for another purpose, it would be advisable to first consult with the responsible conservation authority.

PRODUCED BY Lower Trent Conservation on behalf of the Trent Conservation Coalition Source Protection Committee, March 2011.
(Updated Jan. 2025), with data supplied under licence by members of the Ontario Geospatial Data Exchange.

Waterbodies and watercourses located within the extent of an intake protection zone are included in that zone.



DRINKING WATER
SOURCE PROTECTION
ACT FOR CLEAN WATER

Trenton
Municipal Surface
Well System
Lower Trent Source
Protection Area

Managed Land, Livestock
Density & Total
Impervious Surface Area

Legend

- Surface Water Intake
- +— Railway
- Watercourse
- Main Road
- Highway
- Multi Lane Highway
- Property Boundary
- Source Protection Region
- Source Protection Area
- Upper and Single Tier Municipality
- Lower Tier Municipality
- Waterbody
- Wetland

N

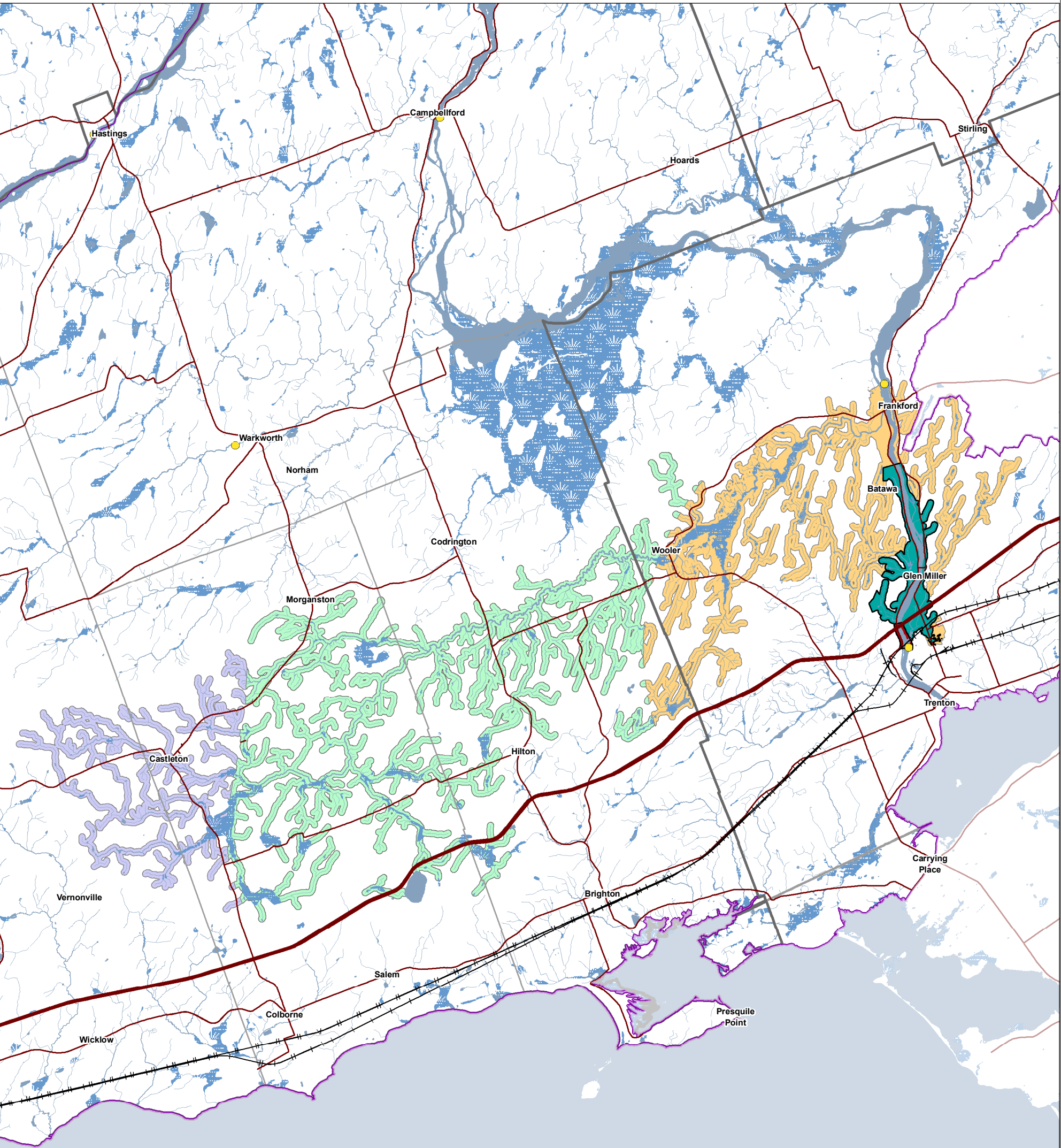
0 1 2 4
Kilometers

Trent Conservation Coalition
Source Protection Region
www.trentsourceprotection.on.ca

This map has been prepared for the purpose of meeting the provincial requirements under the Clean Water Act, 2006. If it is proposed to use it for another purpose, it would be advisable to first consult with the responsible conservation authority.

PRODUCED BY Lower Trent Conservation on behalf of the Trent Conservation Coalition Source Protection Committee, March 2011.
(Updated November 2022), with data supplied under licence by members of the Ontario Geospatial Data Exchange.

Ontario
Made possible through the support
of the Government of Ontario




To determine significant, moderate and low drinking water threats, refer to the Intake Protection Zone Map and find the vulnerability score in the legend. Then, go to the following link to look up threat information. <https://threats.swpip.ca/ZoneScore>

Threats information can also be found in the Technical Rules document found on the bottom of this webpage: <https://trentsourceprotection.on.ca/resources/reports-legislation>

This map has been prepared for the purpose of meeting the provincial requirements under the Clean Water Act, 2006. If it is proposed to use it for another purpose, it would be advisable to first consult with the responsible conservation authority.

PRODUCED BY Lower Trent Conservation on behalf of the Trent Conservation Coalition Source Protection Committee, March 2011
(Updated Jan. 2025), with data supplied under licence by members of the Ontario Geospatial Data Exchange.

 Ontario
Made possible through the support of the Government of Ontario

● Surface Water Intake

— Railway

— Watercourse

— Main Road

— Highway

— Multi Lane Highway

— Source Protection Region

— Source Protection Areas

— Upper and Single Tier Municipality

— Lower Tier Municipality

— Waterbody

— Wetland

Intake Protection Zones

■ IPZ-1

■ IPZ-2

■ IPZ-3a (Vulnerability Score = 6)

■ IPZ-3b (Vulnerability Score = 3)

■ IPZ-3c (Vulnerability Score = 2)

