

To determine significant, moderate and low drinking water threats, first refer to the Wellhead Protection Areas Map and the Vulnerability Scores Map and then go to the following link to look up threat information. <https://threats.swpip.ca/ZoneScore>

Threats information can also be found in the Technical Rules document found on the bottom of this webpage: <https://trentsourceprotection.on.ca/resources/reports-legislation>

**DRINKING WATER**  
**SOURCE PROTECTION**  
ACT FOR CLEAN WATER

**Stirling**  
**Municipal Well System**  
**Lower Trent**  
**Source Protection Area**  
**Wellhead Protection Areas**  
**& Vulnerability**

**Legend**

- Wells
- Railway
- Main Road
- Highway
- Multi Lane Highway
- Source Protection Areas
- Source Protection Region
- Property Boundary
- Lower and Single Tier Municipality
- Upper Tier Municipality
- Waterbody
- Wetland
- Watercourse

0 0.5 1 2  
Kilometres

**Trent Conservation Coalition**  
**Source Protection Region**  
[www.trentsourceprotection.on.ca](http://www.trentsourceprotection.on.ca)

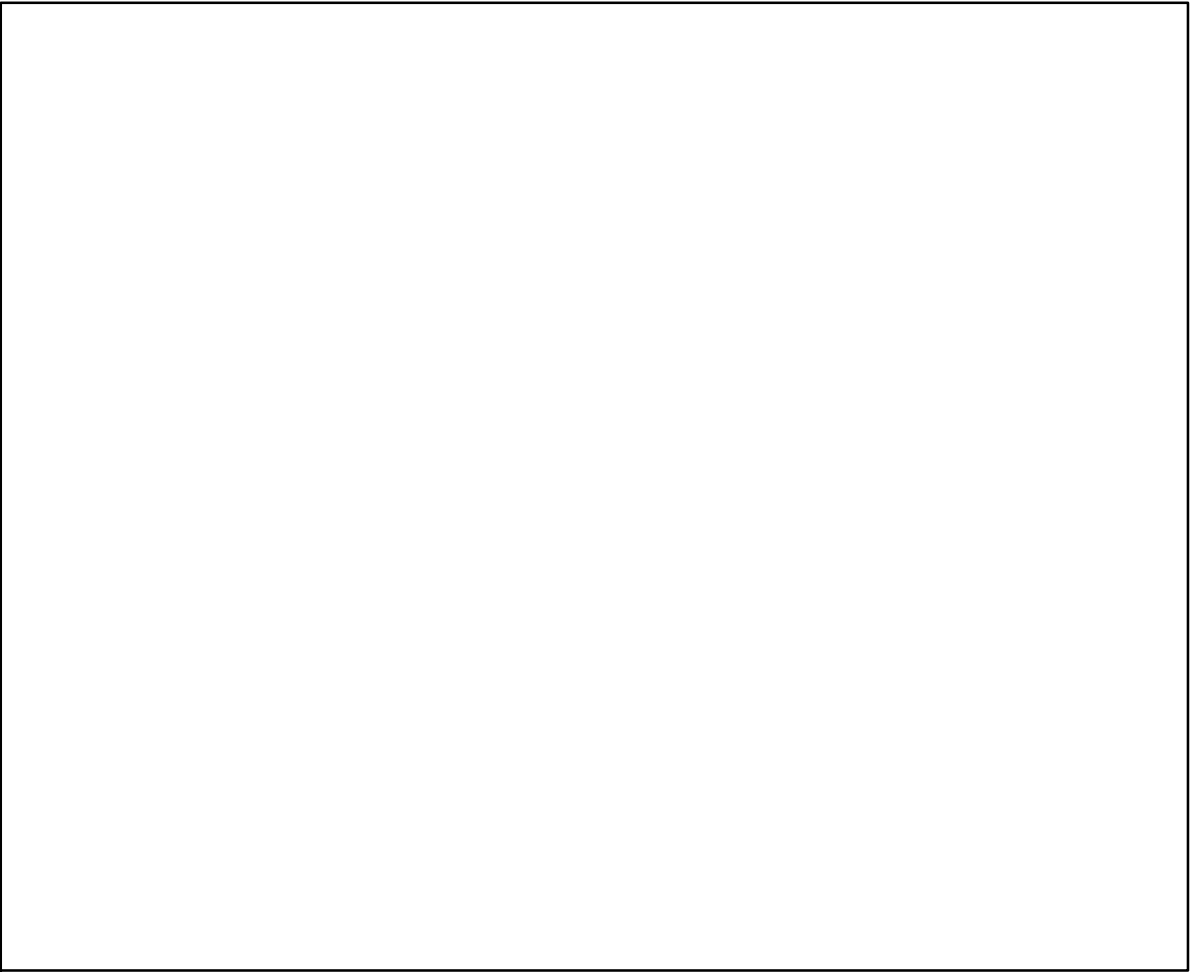
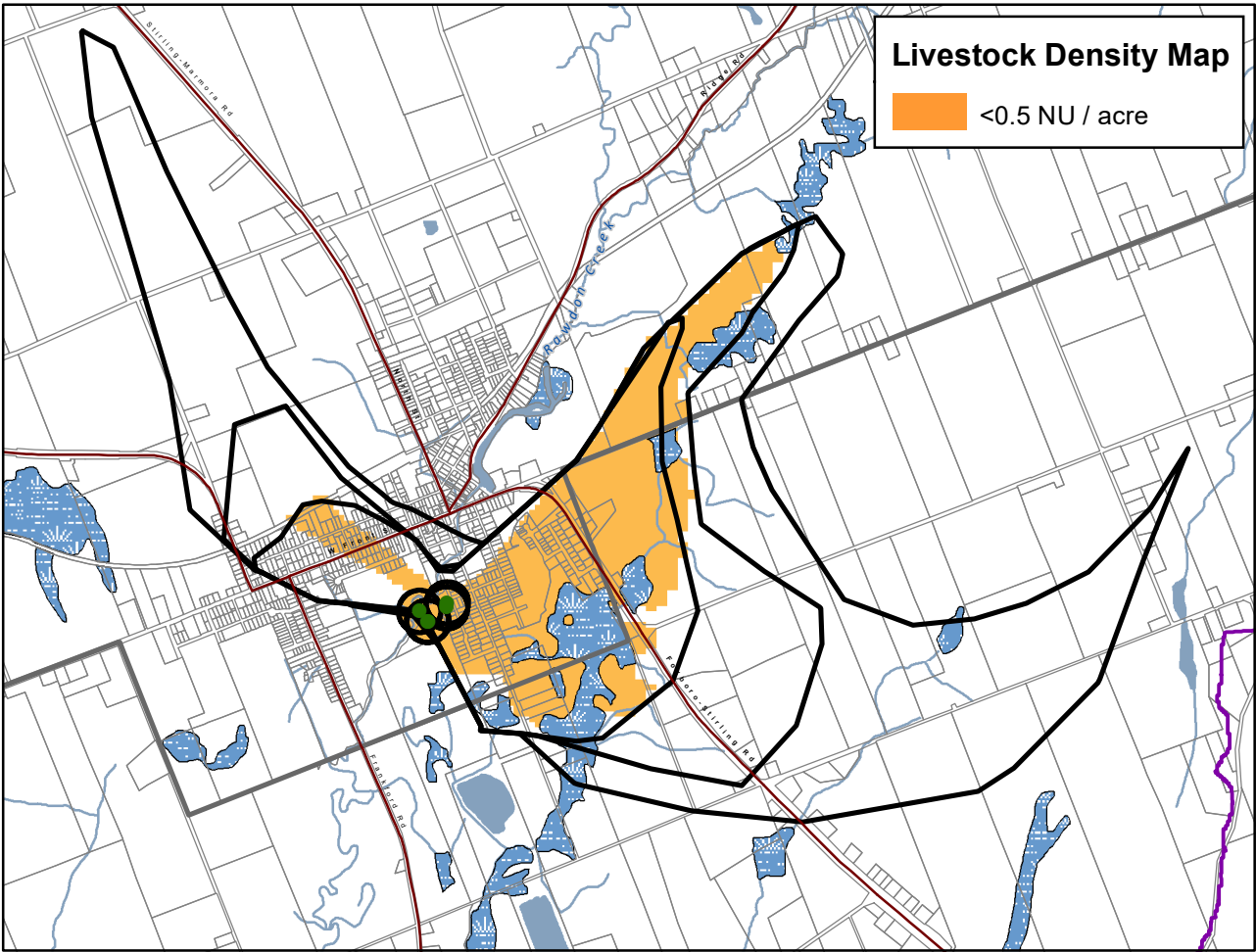
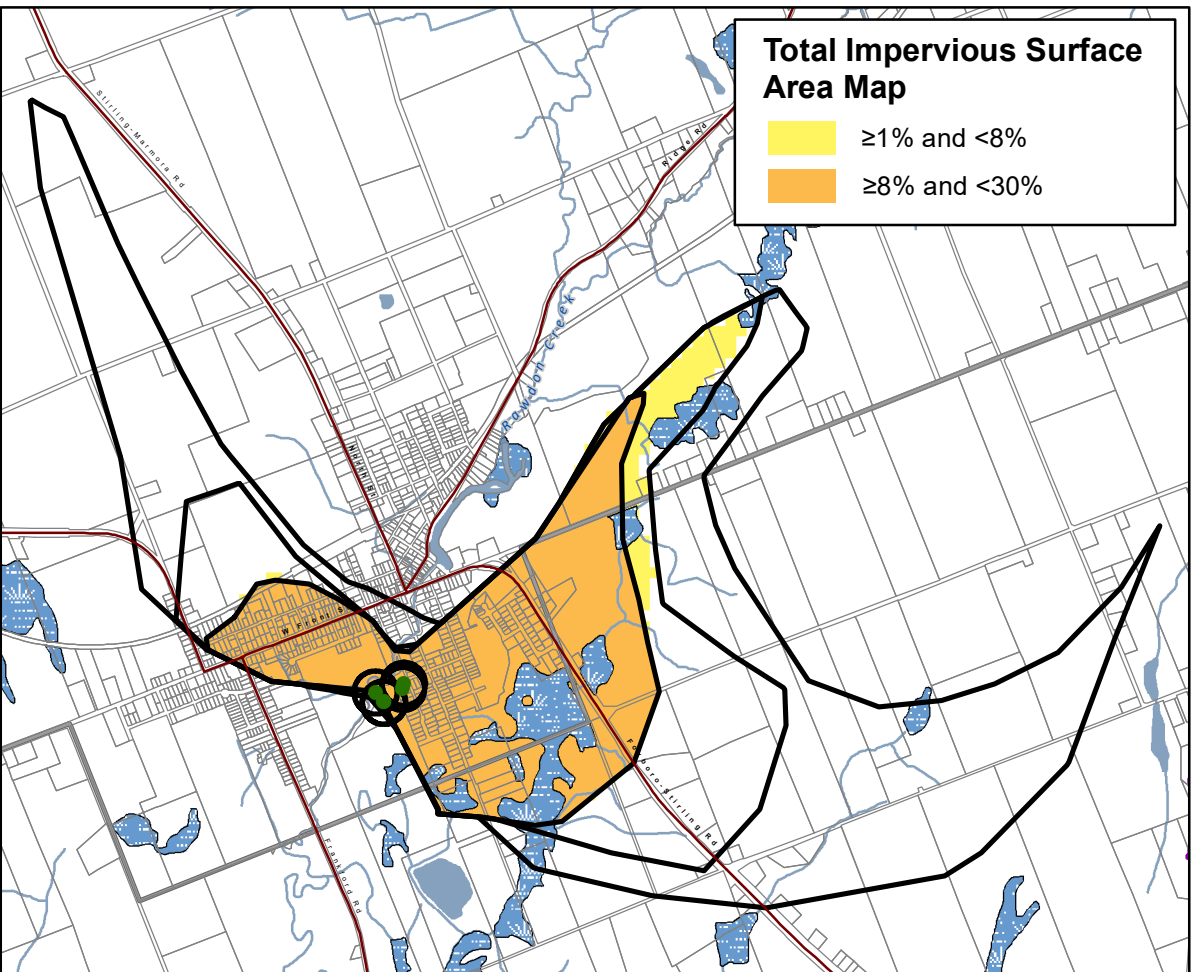
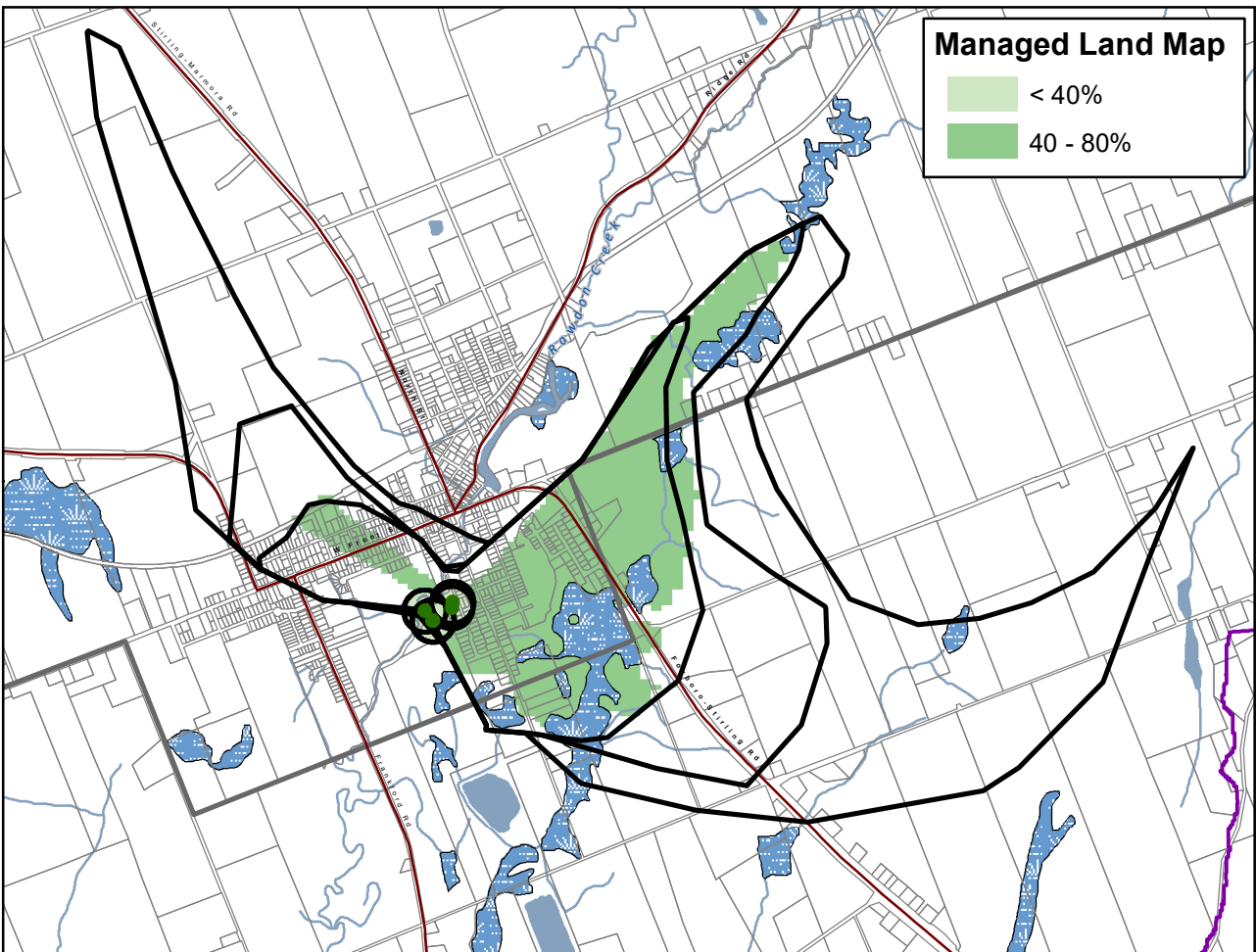
This map has been prepared for the purpose of meeting the provincial requirements under the Clean Water Act, 2006. If it is proposed to use it for another purpose, it would be advisable to first consult with the responsible conservation authority.

PRODUCED BY Lower Trent Conservation on behalf of the Trent Conservation Coalition Source Protection Committee, March 2011.  
(Updated Oct 2024), with data supplied under licence by members of the Ontario Geospatial Data Exchange.

NOTE: Waterbodies and watercourses located within the extent of a wellhead protection area are included in that area.

**Ontario**  
Made possible through the support  
of the Government of Ontario





## Stirling Municipal Well System

### Lower Trent Source Protection Area

#### Managed Land, Livestock Density & Total Impervious Surface Area

**Legend**

- Municipal Wells
- Railway
- Watercourse
- Main Road
- Highway
- Multi Lane Highway
- Property Boundary
- Source Protection Region
- Source Protection Area
- Lower and Single Tier Municipality
- Upper Tier Municipality
- Waterbody
- Wetland

0 0.5 1 2  
Kilometers

**Trent Conservation Coalition Source Protection Region**

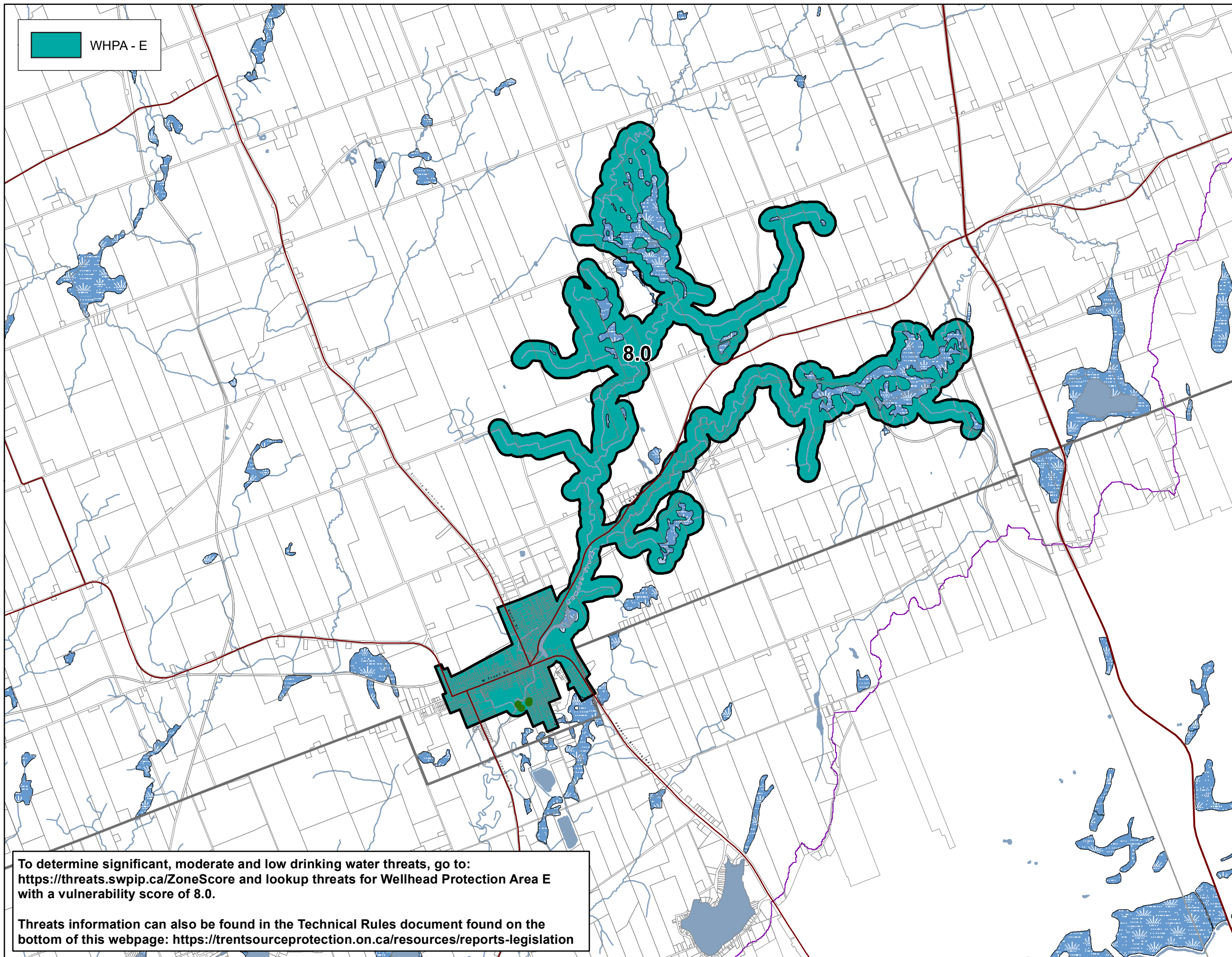
[www.trentsourceprotection.on.ca](http://www.trentsourceprotection.on.ca)

This map has been prepared for the purpose of meeting the provincial requirements under the Clean Water Act, 2006. If it is proposed to use it for another purpose, it would be advisable to first consult with the responsible conservation authority.

PRODUCED BY Lower Trent Conservation on behalf of the Trent Conservation Coalition Source Protection Committee, March 2011 (Updated November 2022), with data supplied under licence by members of the Ontario Geospatial Data Exchange.

Ontario  
Made possible through the support of the Government of Ontario



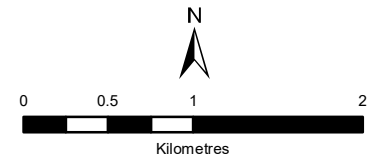


## Stirling Municipal Well System Lower Trent Source Protection Area

### Wellhead Protection Area E: Vulnerability & Areas For Threats

#### Legend

- Municipal Wells
- +— Railway
- Watercourse
- Main Road
- Highway
- Multi Lane Highway
- Property Boundary
- Source Protection Region
- Source Protection Areas
- Lower and Single Tier Municipality
- Upper Tier Municipality
- Wellhead Protection Areas
- Waterbody
- Wetland



**Trent Conservation Coalition  
Source Protection Region**  
[www.trentsourceprotection.on.ca](http://www.trentsourceprotection.on.ca)

To determine significant, moderate and low drinking water threats, go to:  
<https://threats.swpip.ca/ZoneScore> and lookup threats for Wellhead Protection Area E  
with a vulnerability score of 8.0.

Threats information can also be found in the Technical Rules document found on the  
bottom of this webpage: <https://trentsourceprotection.on.ca/resources/reports-legislation>

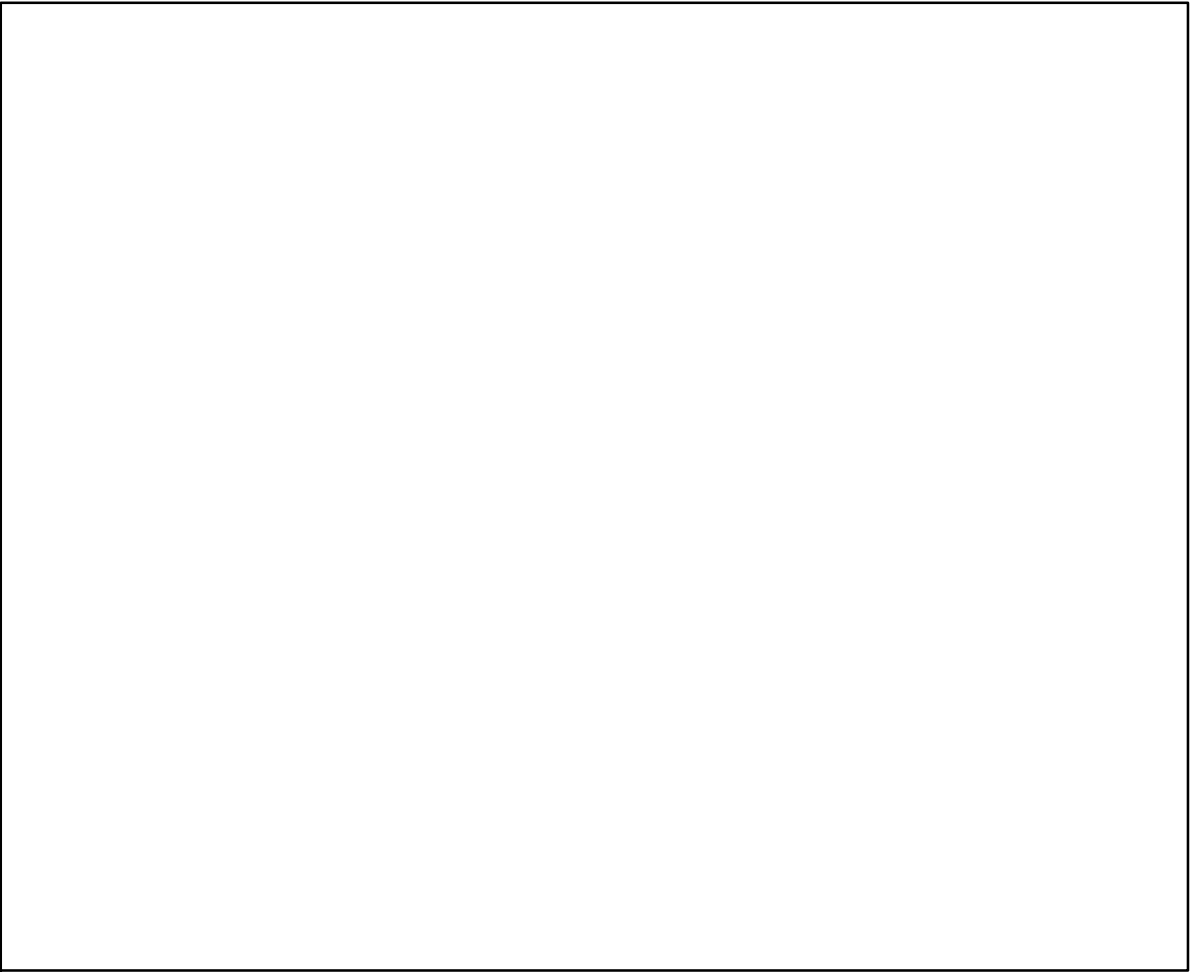
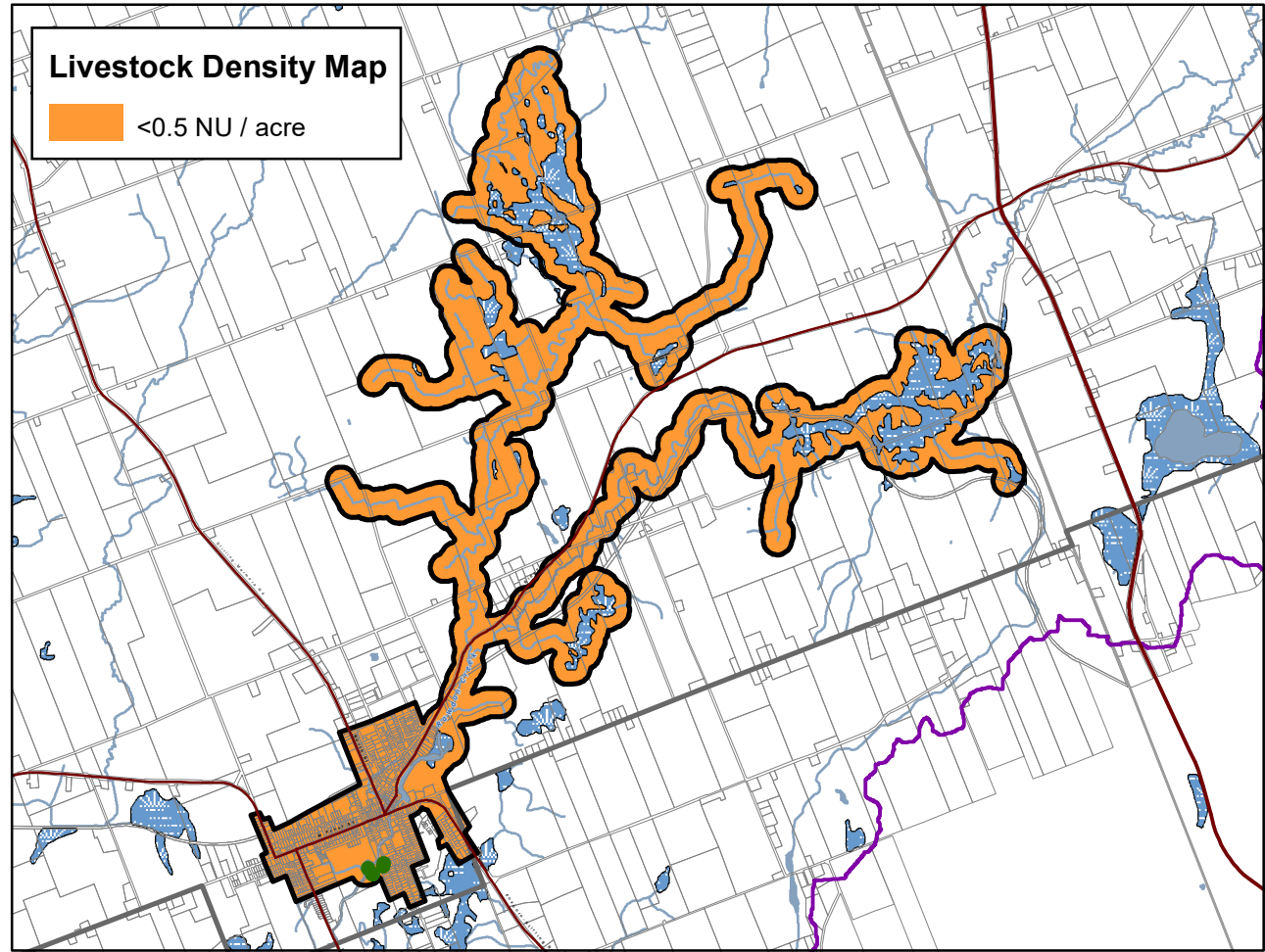
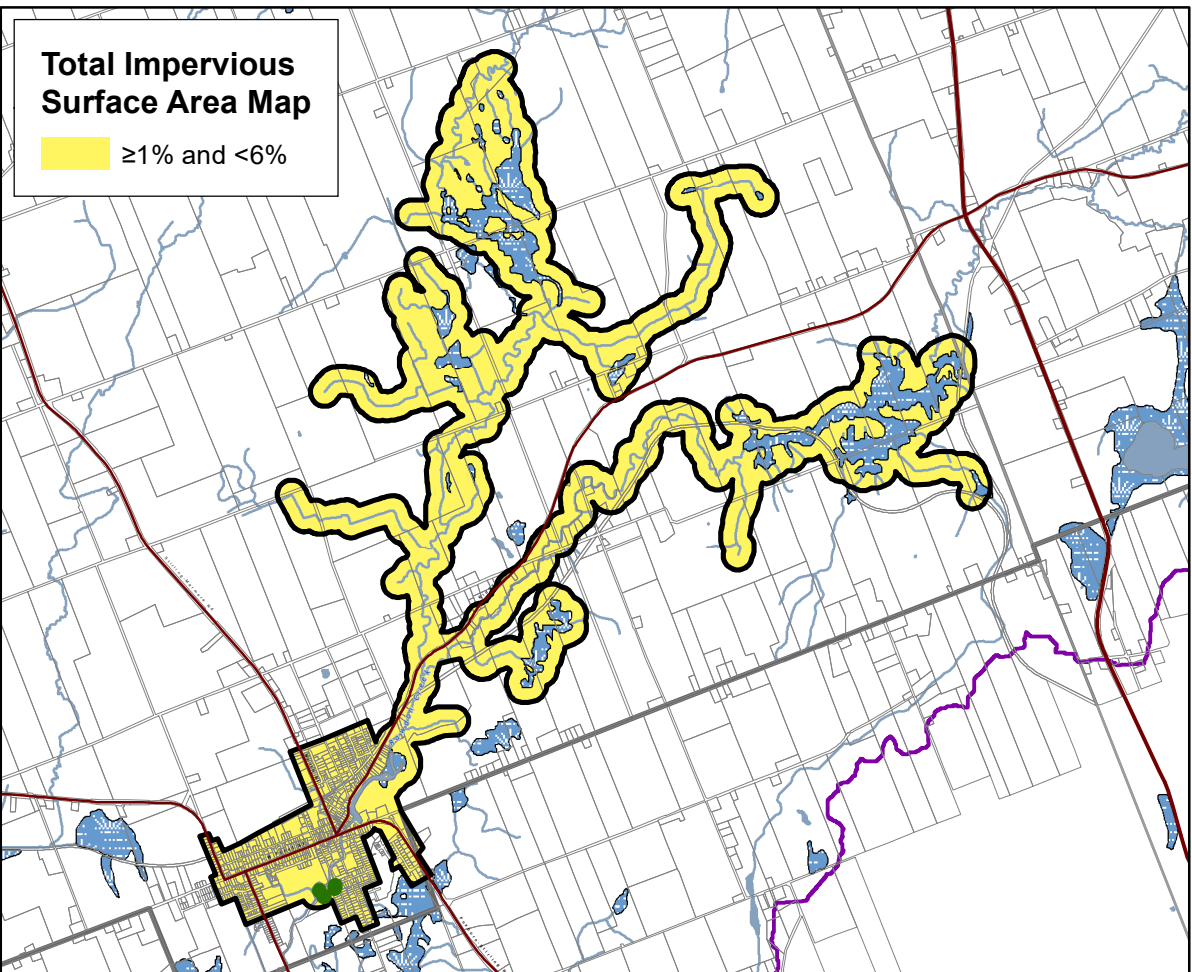
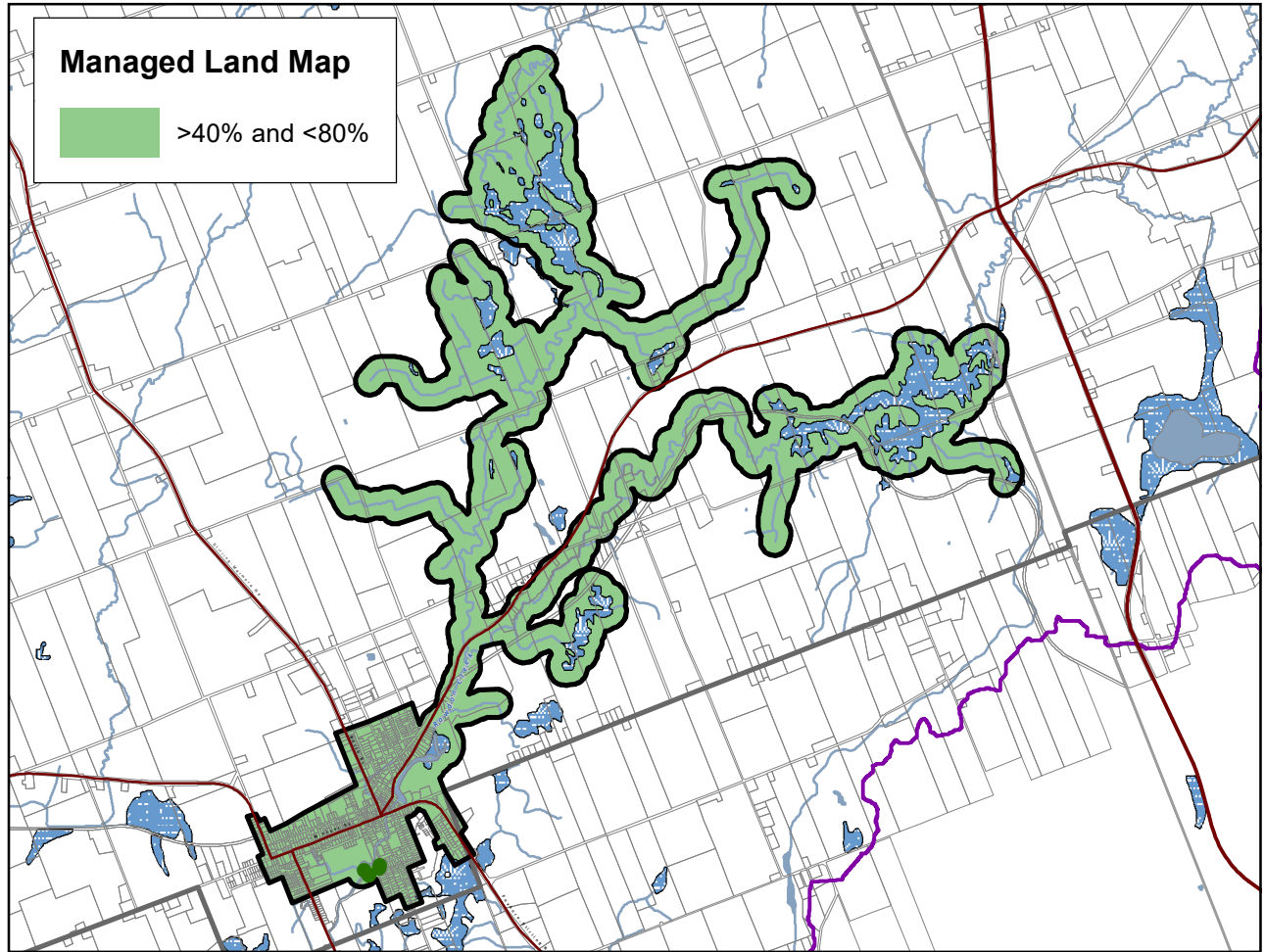
This map has been prepared for the purpose of meeting the provincial requirements under the Clean Water Act, 2006. If it is proposed to use it for another purpose, it would be advisable to first consult with the responsible conservation authority.

PRODUCED BY Lower Trent Conservation on behalf of the Trent Conservation Coalition Source Protection Committee, March 2011  
(Updated Jan 2025), with data supplied under licence by members of the Ontario Geospatial Data Exchange.

NOTE: Waterbodies and watercourses located within the extent of a wellhead protection area are included in that area.

Ontario  
Made possible through the support of the Government of Ontario





**DRINKING WATER**  
**SOURCE PROTECTION**  
ACT FOR CLEAN WATER

**Stirling**  
**Municipal Well System**  
**Lower Trent Source Protection Area**

**Managed Land, Livestock Density & Total Impervious Surface Area - WHPA-E**

**Legend**

- Municipal Wells
- Railway
- Watercourse
- Main Road
- Highway
- Multi Lane Highway
- Property Boundary
- Source Protection Region
- Source Protection Area
- Lower and Single Tier Municipality
- Upper Tier Municipality
- Wellhead Protection Areas
- Waterbody
- Wetland

0 1 2 4  
Kilometers

**Trent Conservation Coalition**  
**Source Protection Region**  
[www.trentsourceprotection.on.ca](http://www.trentsourceprotection.on.ca)

This map has been prepared for the purpose of meeting the provincial requirements under the Clean Water Act, 2006. If it is proposed to use it for another purpose, it would be advisable to first consult with the responsible conservation authority.

PRODUCED BY Lower Trent Conservation on behalf of the Trent Conservation Coalition Source Protection Committee, March 2011  
(Updated November 2022), with data supplied under licence by members of the Ontario Geospatial Data Exchange.

Ontario  
Made possible through the support of the Government of Ontario